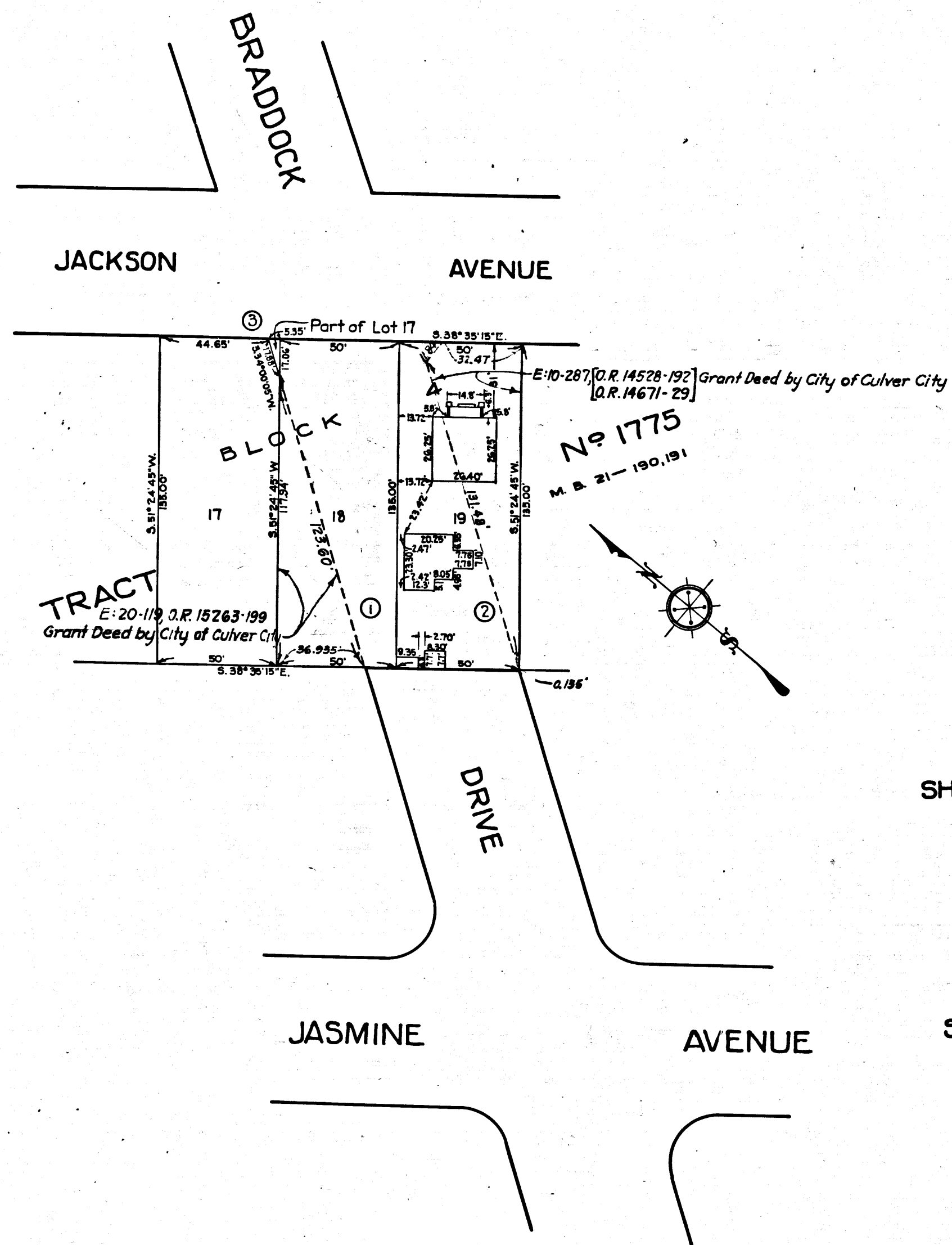


Sht. 23
A-329



Sht. 23
 Superior Court Case No. 301135
 Suit for Condemnation ~
 Filed April 17, 1930
 City of Culver City, Plaintiff.
 Vs
 Isabel Wood, et. al. Def.
 Interlocutory judgment as
 per map, rendered Dec. 12, 1930.
 Judg. Bk. 767-283.
 Final Judgment in favor of Pltff,
 as per map, rendered Jan. 8, 1932
 D: 21-152 O.R. 11257-382

EXHIBIT "C"
 MAP No B-1
 MAP
 SHOWING LAND TO BE CONDEMNED FOR THE
 OPENING AND EXTENSION OF
 BRADDOCK DRIVE.
 IN THE CITY OF CULVER CITY, CALIF.
 AS CONTEMPLATED UNDER ORDINANCE OF
 INTENTION No
 JANUARY 1930
 SCALE 1 Inch = 40 Feet
 H.O. HANFORD
 CITY ENGINEER

Portion tinted red indicates land to be condemned.
 Red numbers in circles denote parcel numbers.

I hereby certify that the diagram hereon was approved by the City Council of the City of Culver City at a meeting thereof held Jan. 6, 1930
 Paul W. Jewett
 City Clerk.

C.F. 1819 -