

Sht. 62
 Superior Court Case No. 305193
 Suit for Condemnation
 Filed July 1st 1930
 County of Los Angeles, Pltff.
 Vs
 H.W. Bricker et al., Defendants.
 Proceedings abandoned Oct. 26, 1932.
 For Deeds See C.S.B-863

Sht-62

PART II
 ACQUISITION AND IMPROVEMENT DISTRICT NO 171
 OF THE COUNTY OF LOS ANGELES

FOR
 THE WIDENING OF
SPRUCE STREET
 SAN FERNANDO ROAD AND NEWHALL AVENUE

MAP SHOWING PROPERTY TO BE ACQUIRED, IN ACCORDANCE
 WITH THE PROVISIONS OF THE ACQUISITION AND
 IMPROVEMENT ACT OF 1925, APPROVED MAY 23, 1925,
 COMMONLY KNOWN AS THE "MATTOON ACT."

SCALE: 1"=50' FEBRUARY, 1930.

J. E. ROCKHOLD - COUNTY SURVEYOR
 SUBMITTED: APPROVED:

Alfred Jones
 ALFRED JONES,
 CHIEF DEPUTY.

J. E. Rockhold
 J. E. ROCKHOLD,
 COUNTY SURVEYOR.

APPROVED AS TO FORM:
 EVERETT W MATTOON, COUNTY COUNSEL.

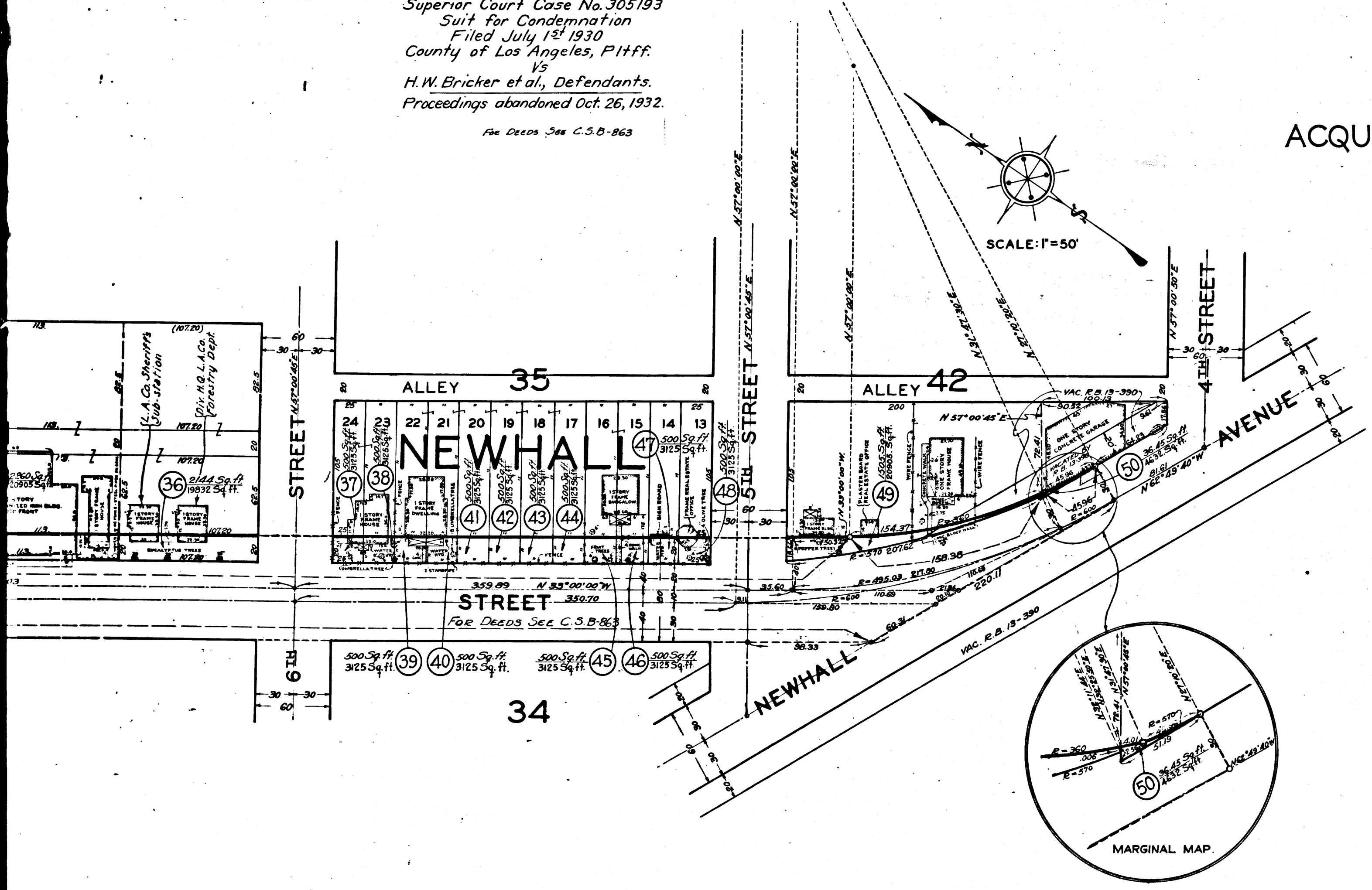
BY: *W. Woodworth Kennedy*
 DEPUTY COUNTY COUNSEL.

LEGEND
 PORTION COLORED RED SHOWS LOCATION, GENERAL ROUTE AND TER-
 MINI OF LAND IN WHICH AN EASEMENT FOR PUBLIC HIGHWAY PURPOSES
 IS SOUGHT TO BE ACQUIRED.
 NUMBERS IN CIRCLES INDICATE PARCELS SOUGHT TO BE CONDEMNED.

FIGURES SHOWN IN PARENTHESES () ARE EITHER RECORD DISTANCES
 OR CALCULATED FROM RECORD DISTANCES.
 FIGURES SHOWN THUS:

0.0005 SQ. FT. - INDICATE AREA TO BE ACQUIRED.
 00,000 SQ. FT. - INDICATE AREA OF HOLDING, IN-
 CLUDING AREA TO BE ACQUIRED.

Per Spruce St. and Newhall Ave. changed to San Fernando Road-D:49-115



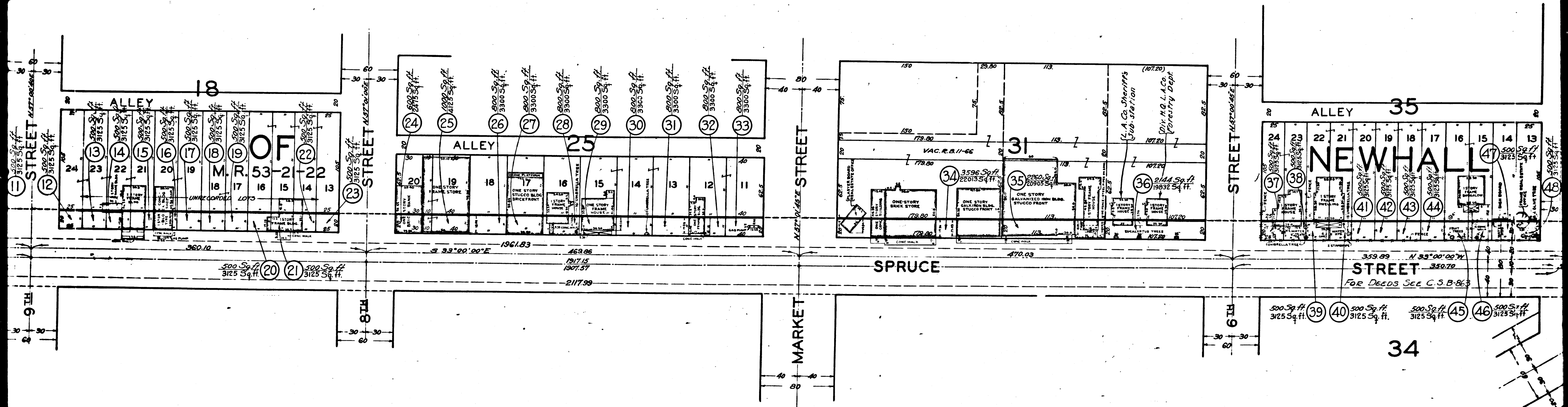
C.F. 1820-

Negative of this map filed in Blue
 Print Dept. as Negative No. 123

Sheet No. 1 of 1 Sheet	
A. & I. DISTRICT NO. 171	
DRAWN BY GREEN	NOV. 1928
TRACED BY GREEN-HYDE	11/28-2/29
CHECKED BY FINLEY-LOCKE	FEB. 1929

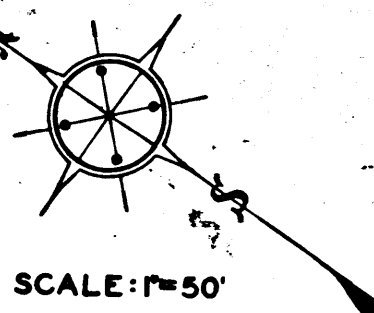
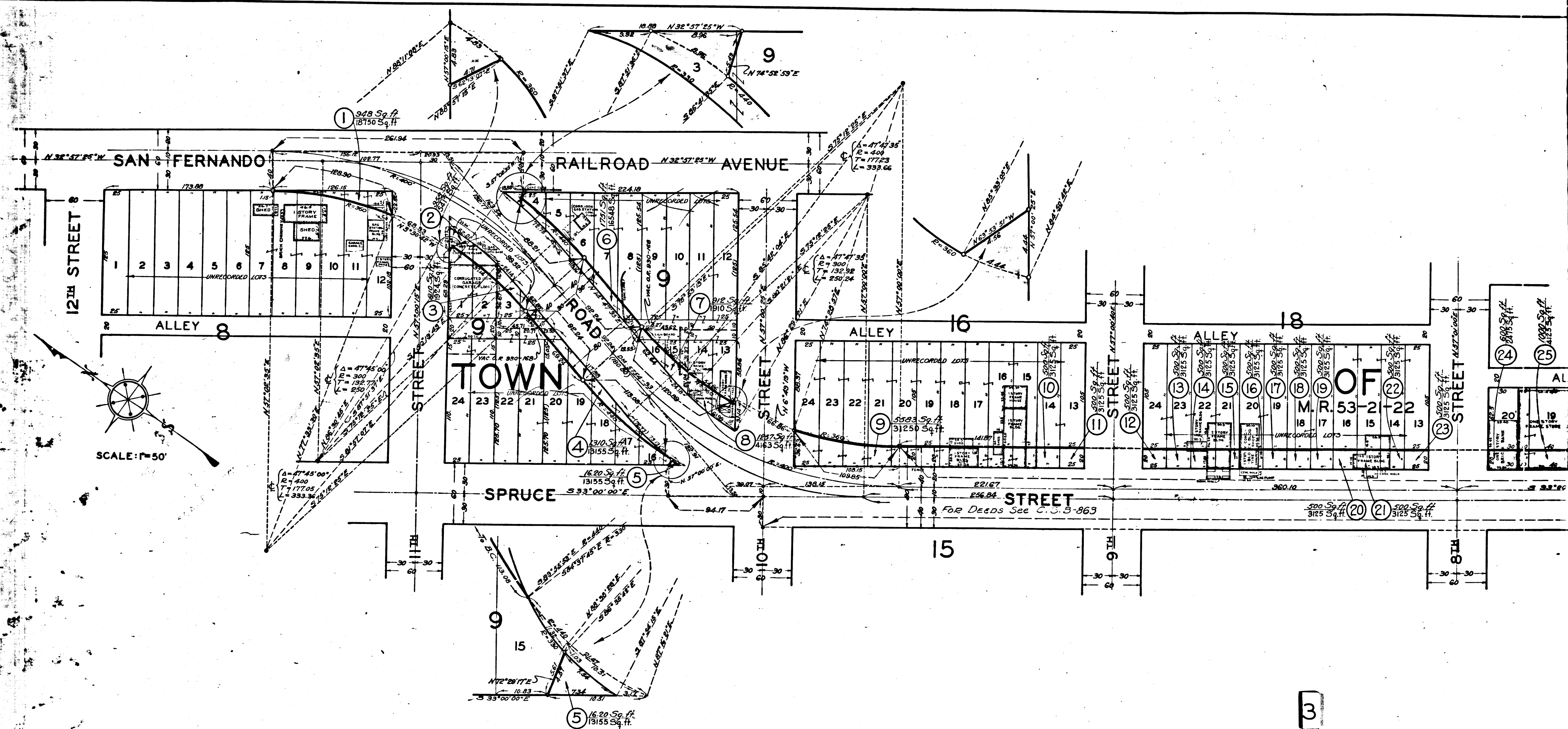
Sht. 62
 Superior Court Case No. 305193
 Suit for Condemnation
 Filed July 1st 1930
 County of Los Angeles, Pltff.
 Vs
 H. W. Bricker et al., Defendants.
 Proceedings abandoned Oct. 26, 1932.

For Deeds See C.S.B-863



2

C.F. 1820-



SCALE: 1"=50'

3

C.F. 1820-