

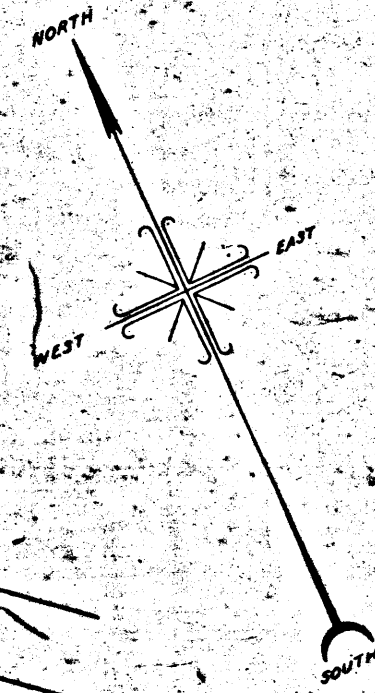
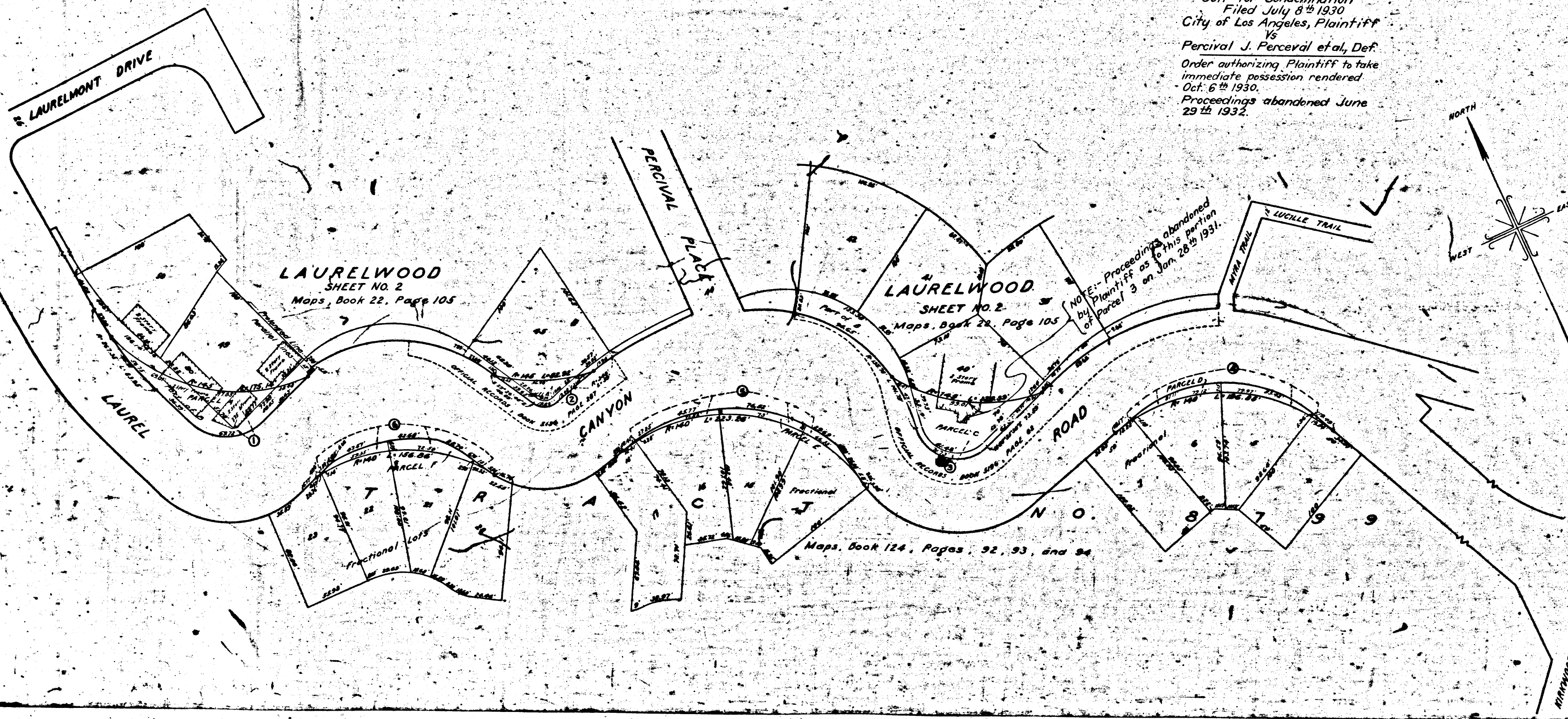
2182-A

A-2812

Superior Court Case No. 305426
 Suit for Condemnation
 Filed July 8th 1930
 City of Los Angeles, Plaintiff
 Vs
 Percival J. Perceval et al, Def.
 Order authorizing Plaintiff to take
 immediate possession rendered
 Oct. 6th 1930.
 Proceedings abandoned June
 29th 1932.

O & W- LAUREL CANYON ROAD- LOOKOUT MT. ROAD TO KIRKWOOD DRIVE
 FILE NO. 878-123
 CHARGE NO. 83633

Sheet 22
 A 520



MAP
 SHOWING THE LAND TO BE CONDEMNED
 FOR THE
 WIDENING AND LAYING OUT
 OF PORTIONS OF
LAUREL CANYON ROAD
 BETWEEN
LAURELMONT DRIVE
 AND
KIRKWOOD DRIVE
 IN THE CITY OF LOS ANGELES, CALIF.
 IN ACCORDANCE WITH ORDINANCE NO. 85534
 J.J. JESSUP-CITY ENGINEER JANUARY 1930
 SCALE 1" = 40'
 -Sht 22

Laurel Canyon Rd. chg. to Laurel Canyon Blvd.-Ord.

NOTES:
 Land to be condemned shown colored red
 Dotted lines and dimensions show property holdings in those
 cases where they differ from recorded subdivisions
 Figures in circles indicate parcel numbers as set forth
 in paragraph VIII of the complaint.

