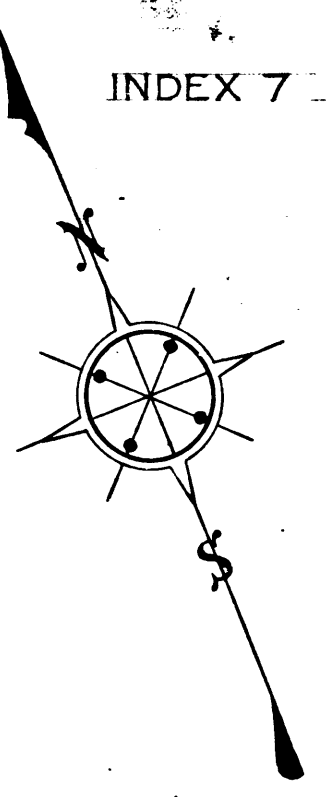


Superior Court Case No. 306911
 Suit for Condemnation
 Filed Aug. 5th 1930
 County of Los Angeles, Pltff.
 Vs
 American Trust Co. et al., Def.
 Proceedings abandoned March
 21st 1932 and various judgments
 of dismissal rendered.



PART II
ACQUISITION & IMPROVEMENT DISTRICT NO. 5
OF THE COUNTY OF LOS ANGELES
 FOR
THE OPENING, WIDENING, EXTENDING
IMPROVEMENT OF AND WORK UPON
WASHINGTON BOULEVARD

MAP SHOWING PROPERTY TO BE ACQUIRED, IN ACCORDANCE WITH THE PROVISIONS OF THE ACQUISITION AND IMPROVEMENT ACT OF 1925, APPROVED MAY 23, 1925, COMMONLY KNOWN AS THE MATTOON ACT.

SCALE IN FEET
J. E. ROCKHOLD - COUNTY SURVEYOR

SUBMITTED: *J. E. Rockhold*
 J. E. ROCKHOLD, COUNTY SURVEYOR.
 APPROVED: *G. W. Jones*
 G. W. JONES, COUNTY ROAD COMMISSIONER.

APPROVED AS TO FORM:
EVERETT W. MATTOON, COUNTY COUNSEL

BY: *W. B. Nelson*
 DEPUTY COUNTY COUNSEL.

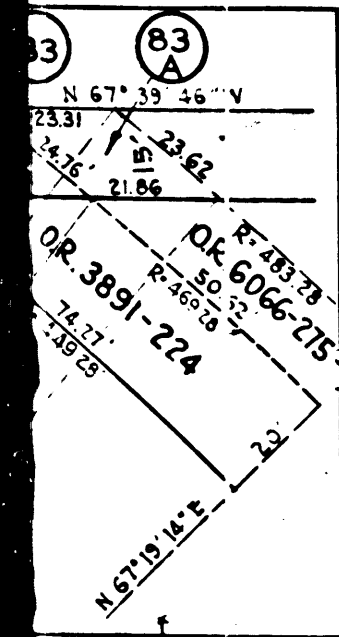
LEGEND
 PORTION COLORED RED SHOWS LOCATION, GENERAL ROUTE AND TERMINI OF LAND IN WHICH AN EASEMENT FOR PUBLIC HIGHWAY PURPOSES IS SOUGHT TO BE ACQUIRED. PORTIONS COLORED YELLOW SHOW LOCATIONS IN WHICH EASEMENTS ARE SOUGHT TO BE ACQUIRED FOR EXTENSION OF SLOPES.
 NUMBERS IN CIRCLES INDICATE PARCELS SOUGHT TO BE CONDEMNED. FIGURES SHOWN IN PARENTHESES () ARE EITHER RECORD DISTANCES OR CALCULATED FROM RECORD DISTANCES.

FIGURES SHOWN THUS:-
 0,000 SQ. FT. - INDICATE AREA TO BE ACQUIRED.
 00,000 SQ. FT. - INDICATE AREA OF HOLDING INCLUDING AREA TO BE ACQUIRED.

C.F. 1830 -

Negative of this map filed in Blue Print Dept. as Negative No. 165 (3 sheets)

A. & I. DIST.	
Drawn by	W. B. Nelson
Traced by	W. B. Nelson
Checked by	W. B. Nelson



TRACT NO. 8626

M.B. 121, 96-100

LOT 20

LOT 21

LOT 24

LOT 24

N 22° 19' 39" E 1932.96'

S 83° 51' 31" E 4163.51'

S 83° 51' 31" E 524.61'

IDENTICAL

S 83° 51' 31" E 524.61'

N 68° 43' 26" E 428.03'

N 67° 39' 46" W 1290.0'

SCALE IN FEET

0 100 200

N 22° 19' 39" E 569.90'

79

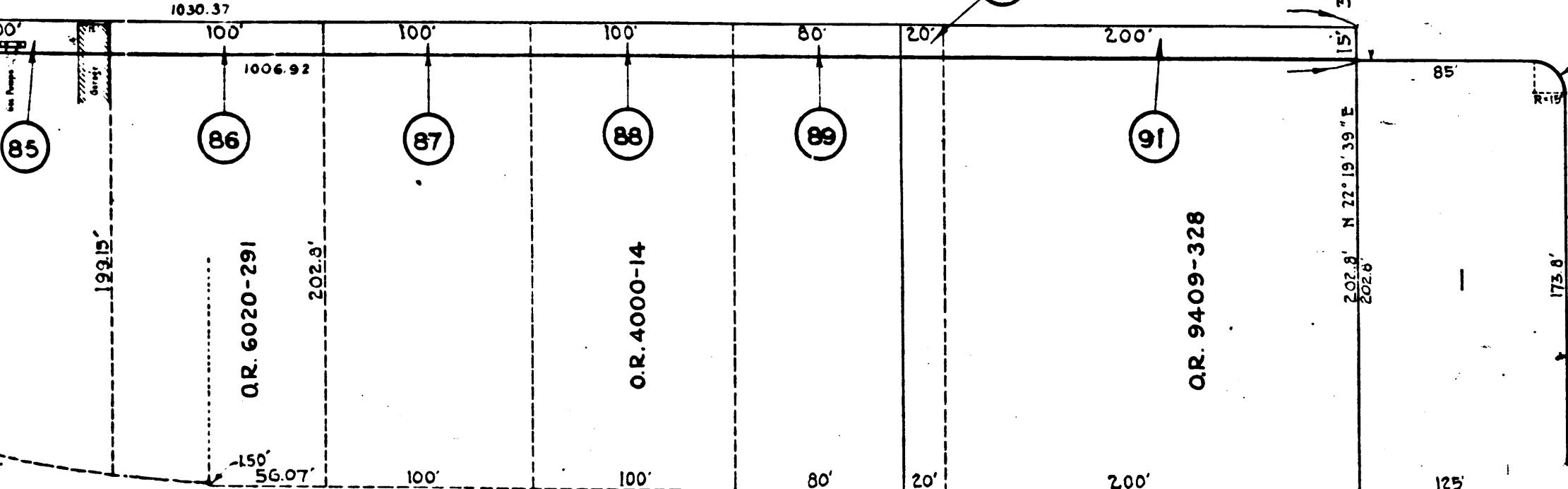
80

1255.57'
1290.00'

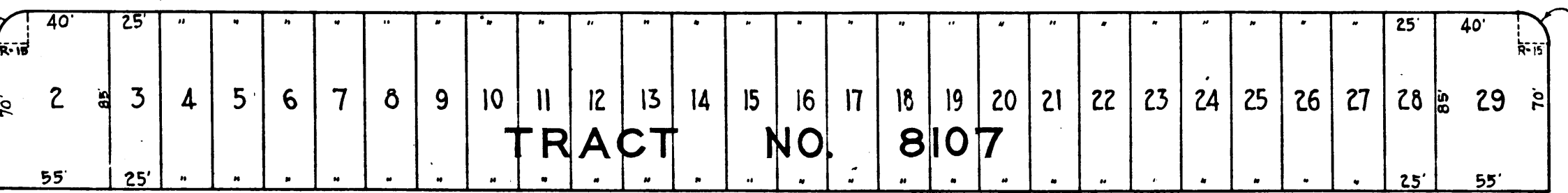
Wire mesh Fence 6' high 2" Iron Posts set in concrete 10' apart

BLVD.

N 67° 39' 46" W



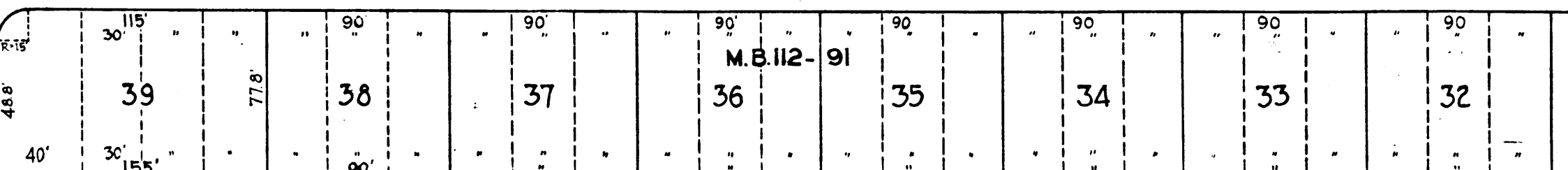
MULFORD ST.



TRACT NO. 8107

PACIFIC WAY.

COBB ST.



RANCHO LAGUNA

C.F. 880
SCC # B25296
EXHIBIT A

77

1006.92
27.91
1034.83
220
782.83

1006.92
27.91
778.01
220
750.71

174
174
348

217.6
217.6
435.2

2

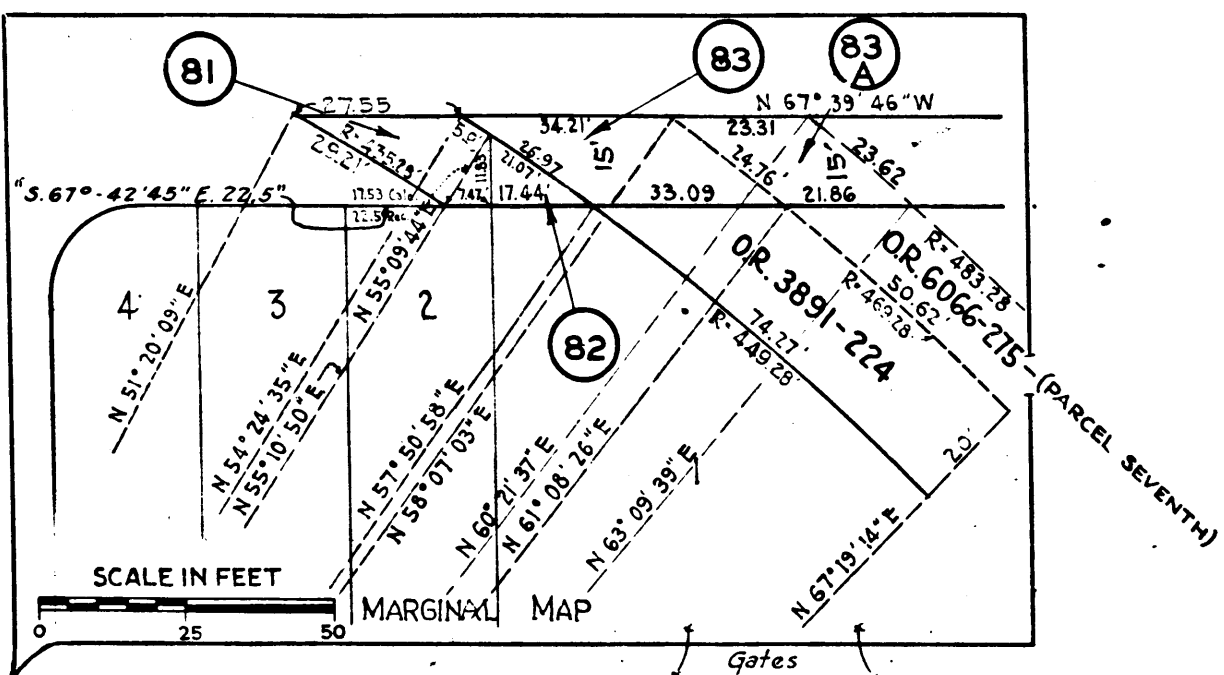
C.F. 1830-

TRACT NO

M.13.121, 9

LOT 20

LOT 21



SCALE IN FEET
0 25 50

MARGIN XL
MAP

Gates

S 83° 51' 51\" E 4163.51'

79

N 22° 19' 39\" E 2532.94'

524

S 67° 39' 46\" E

22	21	20	19	18	17	16	15	14	13	12	11	10	9	8	7	6	5
10																	

ELM ST. WAY

WAY

67	68	69	70	71	72	73	74

O.R. 44-78-386

85

86

87

88

89

91

O.R. 6020-291

O.R. 4000-14

O.R. 9409-328

RANCHO LAGU

C.F. 880
SCC # B25296
EXHIBIT A

78

217.8'

600'

1004.46'

505.13'

217.8'

122-117
27.85
10-2-72

1200-92
24-91
10-2-72

3

C.F. 1830-

2/24/74
2/24/74

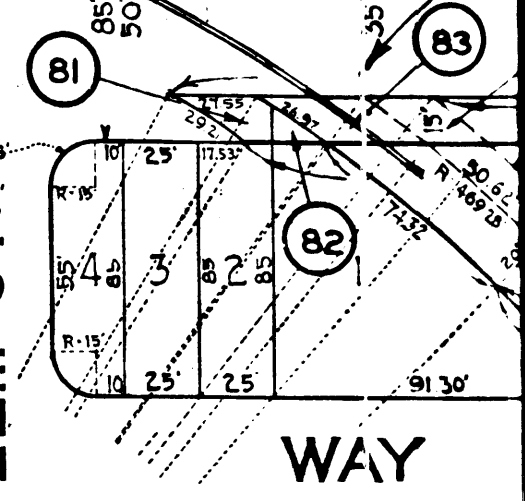
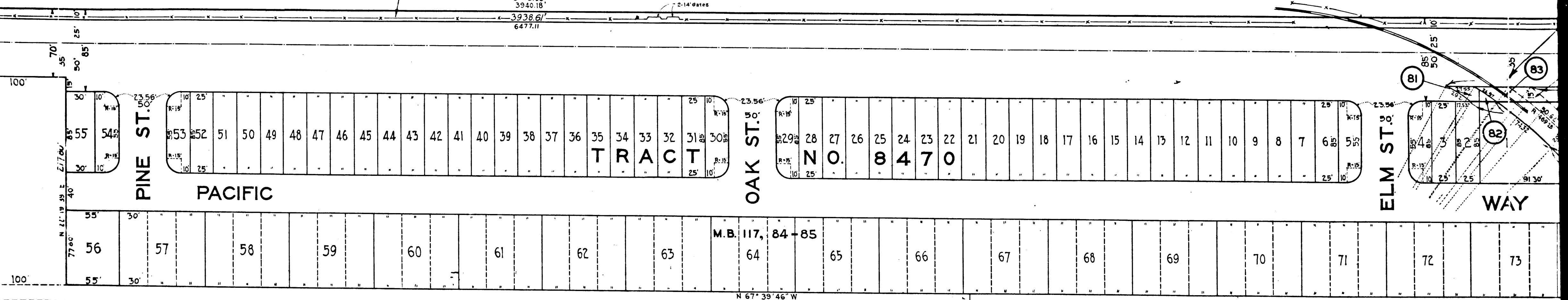
O. 8626

21, 96-100
20

78

6478.53
3940.18
3938.67
6477.11

2-14' Gates



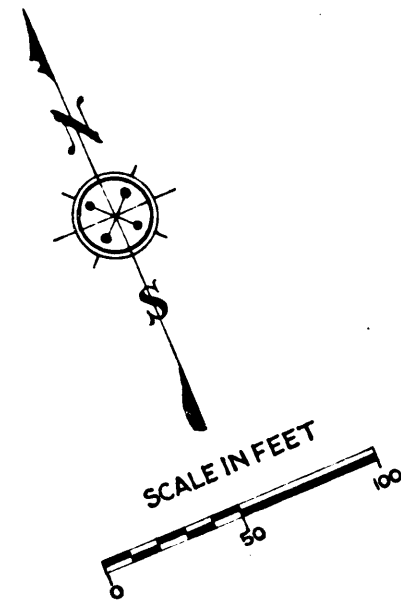
LAGUNA

880
B-25296
T'A

79

4

C.F. 1830-



TRACT NO. 8626

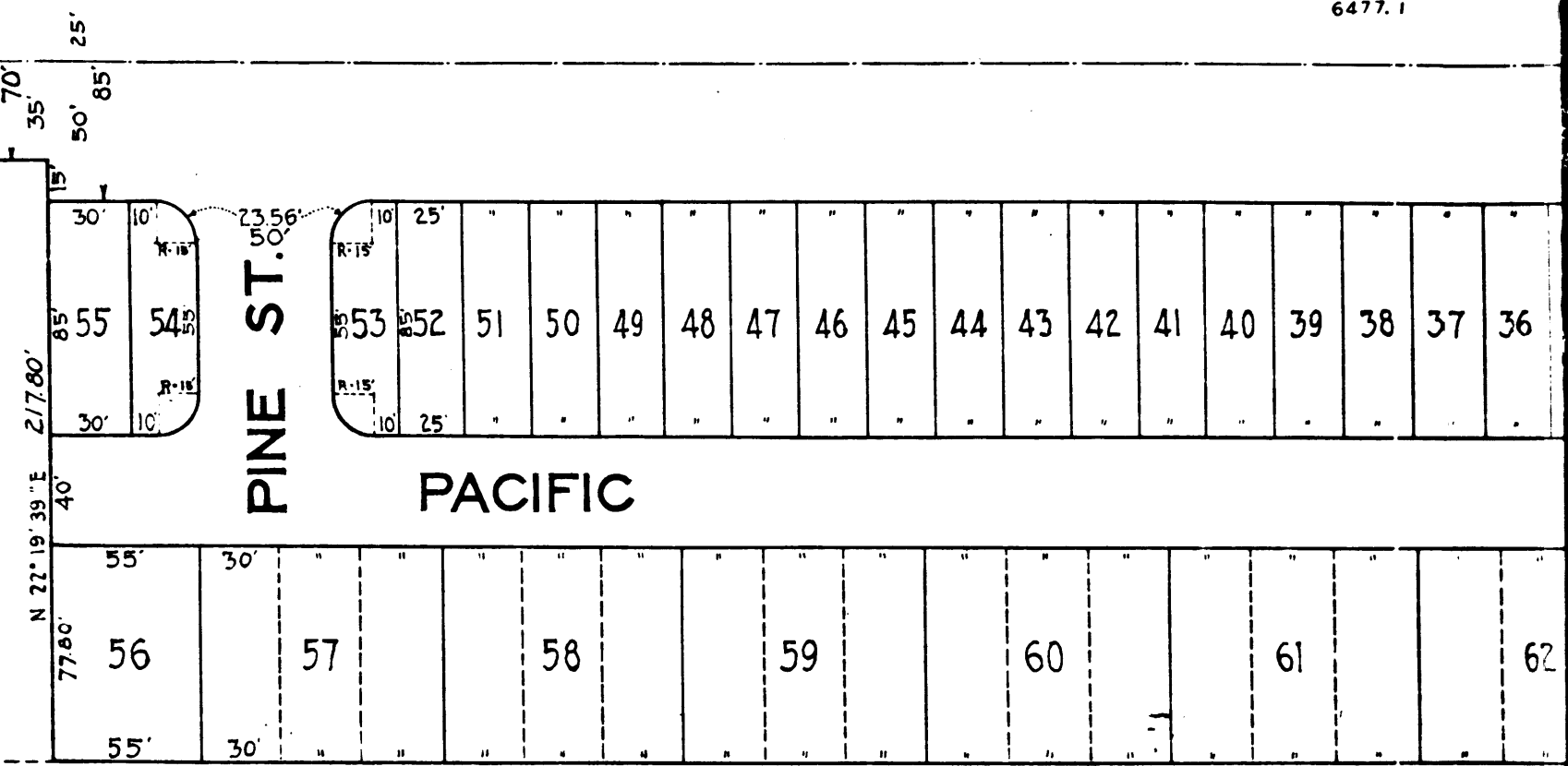
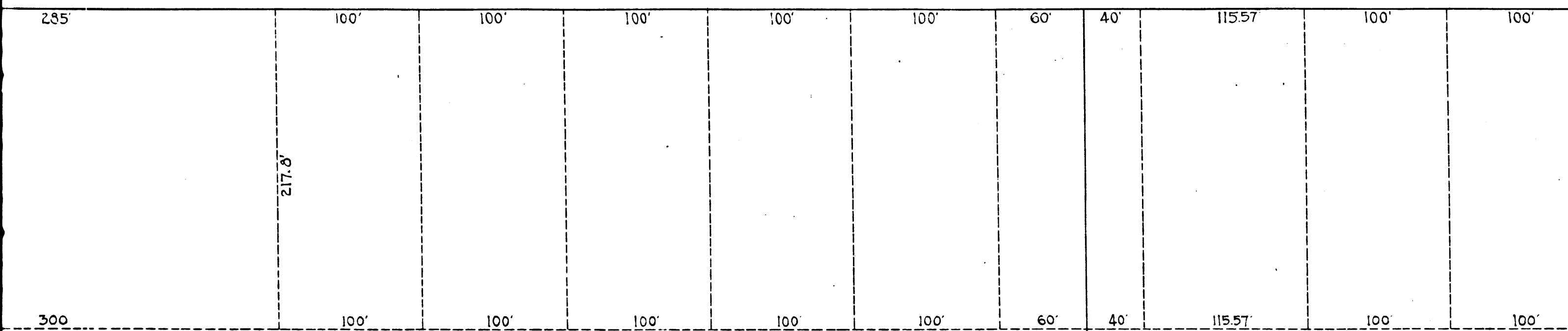
M.B. 121, 96-100
LOT 20

78

6478.53
3940.18
6477.1

Iron Posts set in concrete 10' apart

STON N 67° 39' 46" W



RANCHO LAGUNA

C.F. 880
S.C.C. N° B-25296
EXHIBIT "A"

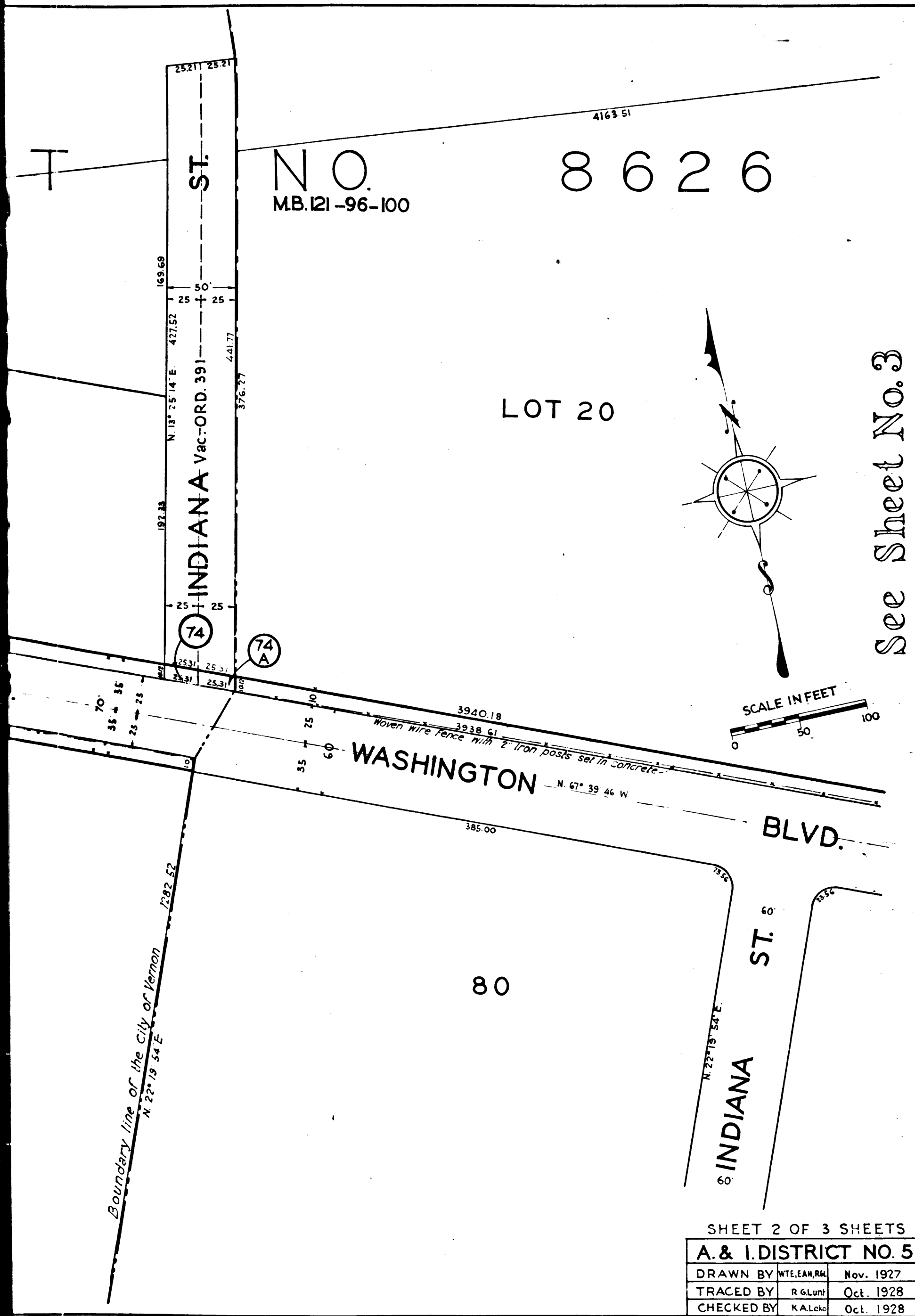
80

79

845'

5

C.F. 1830-



N.O. 8626
 MB. 121-96-100

LOT 20

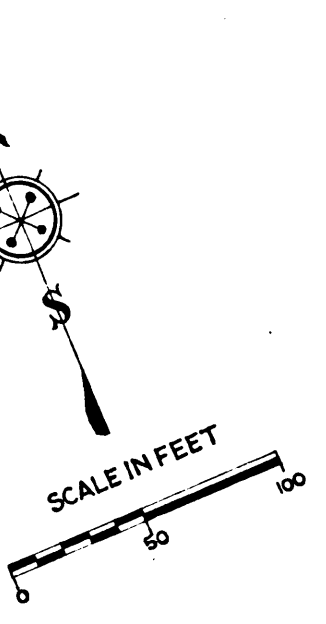
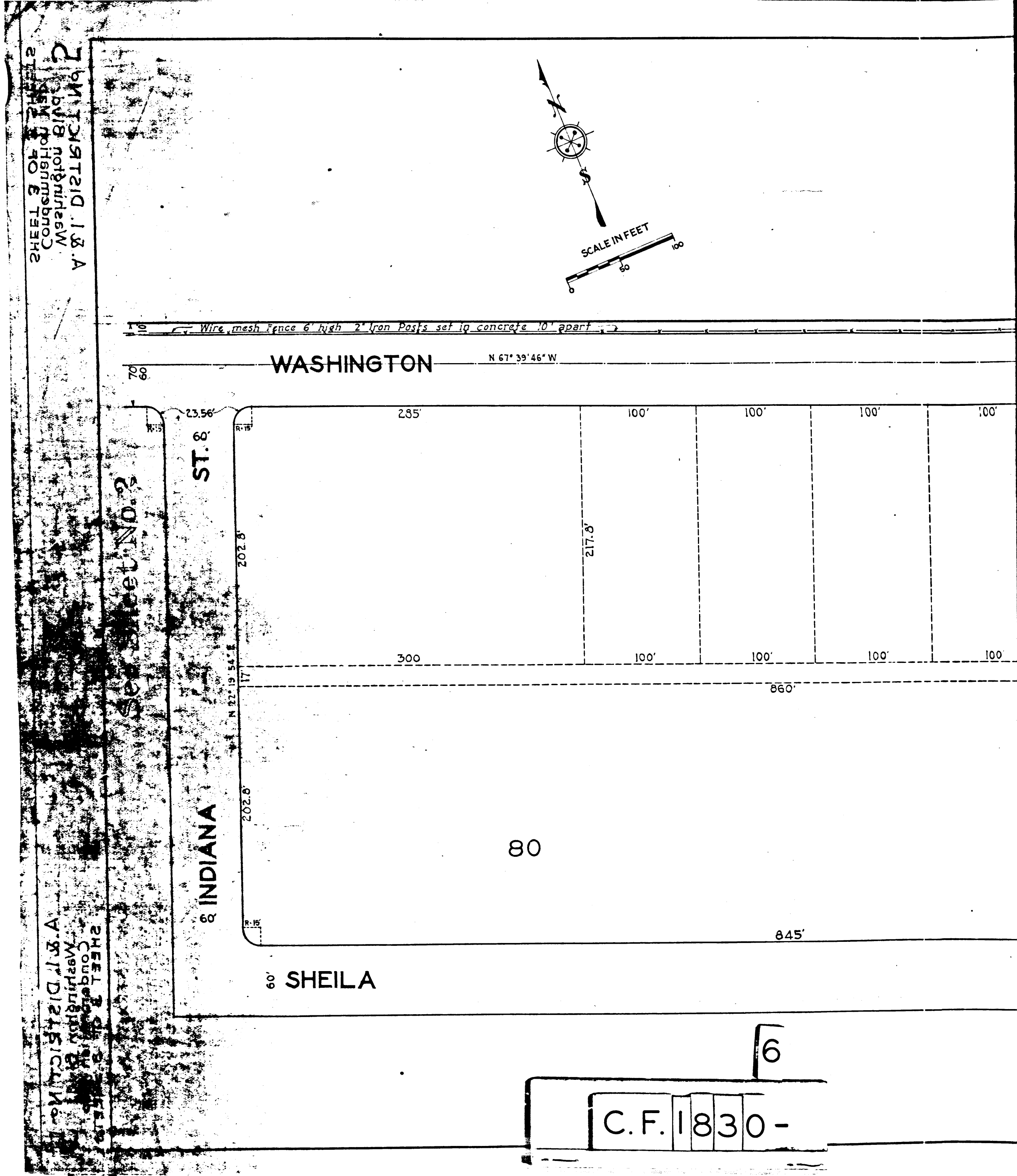
See Sheet No. 3

SHEET 2 OF 3 SHEETS
 A. & I. DISTRICT NO. 5

DRAWN BY	WTE, EAM, RM	Nov. 1927
TRACED BY	R & Lunt	Oct. 1928
CHECKED BY	KAL, Lck	Oct. 1928

SHEET 5 OF 3 SHEETS
 CONGRESSIONAL BLVD
 WASHINGTON BLVD
 A. & I. DISTRICT NO. 2

SHEET 5 OF 3 SHEETS
 CONGRESSIONAL BLVD
 WASHINGTON BLVD
 A. & I. DISTRICT NO. 2



C.F. 1830-6

SHEET 5 OF 3 SHEETS
 CONGRESSIONAL BLVD
 WASHINGTON BLVD
 A. & I. DISTRICT NO. 2

SHEET 5 OF 3 SHEETS
 CONGRESSIONAL BLVD
 WASHINGTON BLVD
 A. & I. DISTRICT NO. 2

LOT 16

TRACT

ST. NO. 8626
M.B. 121-96-100

4163.51

LOT 17

N 83° 51' 16" E
81.65

N 67° 39' 46" W
477.42

81½

LOT 20

73

6478.53
1161.88
1197.89
6477.11

77

1220.00
1278.58

2521 2521

169.69

25 25

25 25

N 13° 25' 14" E 427.52

192.88

INDIANA Vac-ORD. 991

25 25

25 25

25 25

25 25

25 25

25 25

25 25

25 25

25 25

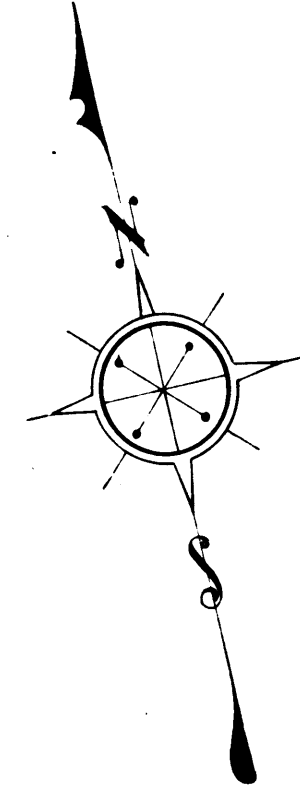
25 25

25 25

25 25

25 25

25 25



SCALE IN FEET
0 50 100

See Sheet No. 3

BLVD.

WASHINGTON BLVD.

INDIANA ST.

INDIANA ST.

81

80

Boundary line of the City of Vernon
N 22° 19' 54" E 1282.52

7

C.F. 1830-

SHEET 2 OF 3 SHEETS	
A. & I. DISTRICT NO. 5	
DRAWN BY WTE:EAR:RM	Nov. 1927
TRACED BY RGL:um	Oct. 1928
CHECKED BY KAL:chc	Oct. 1928

SHEET 2 OF 3 SHEETS
A. & I. DISTRICT NO. 5
Washington Blvd
City of Vernon

SHEET 5 OF 3 SHEETS
A. & I. DISTRICT NO. 5
Washington Blvd
City of Vernon

LOT 16

LOT 17

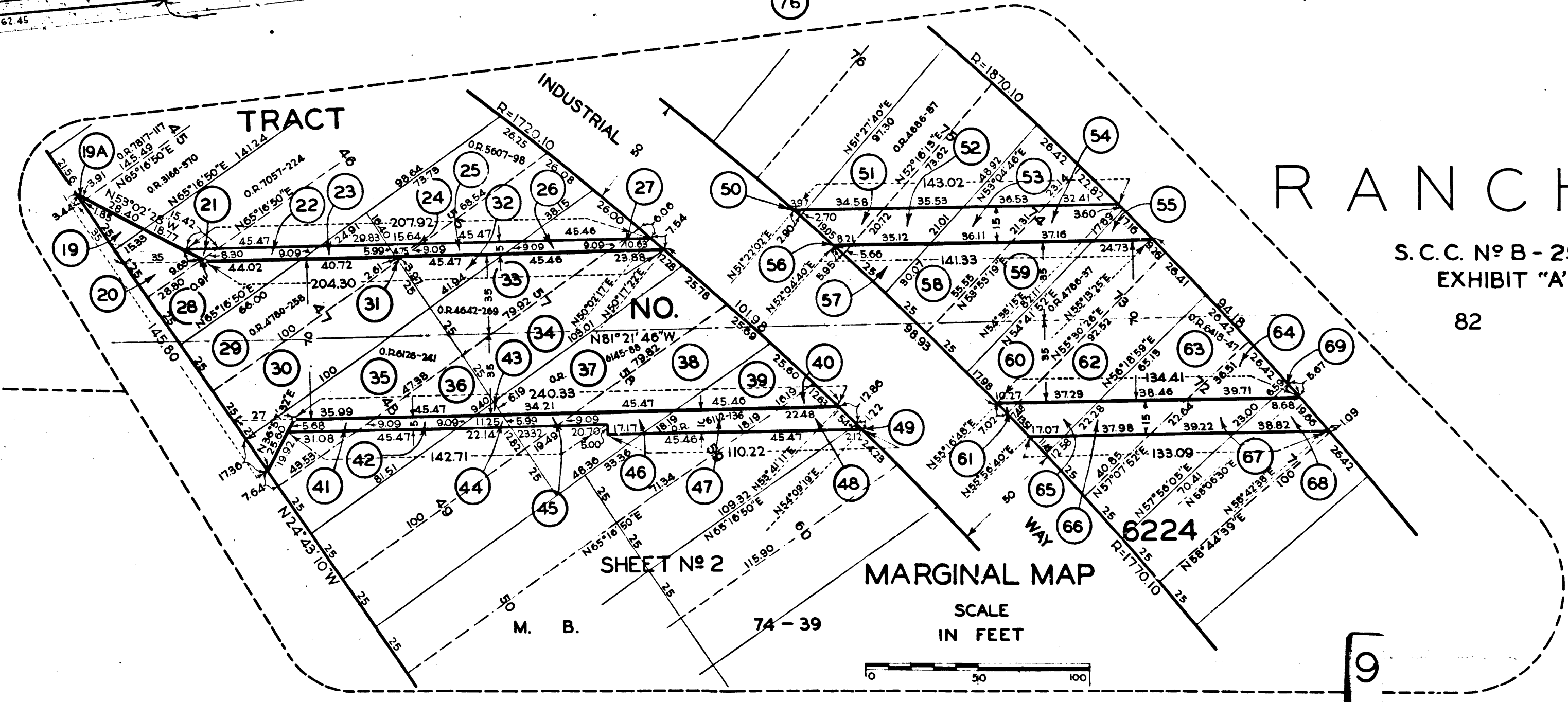
(FORMERLY HOLABIRD AVE.)

WASHINGTON

RANCHO

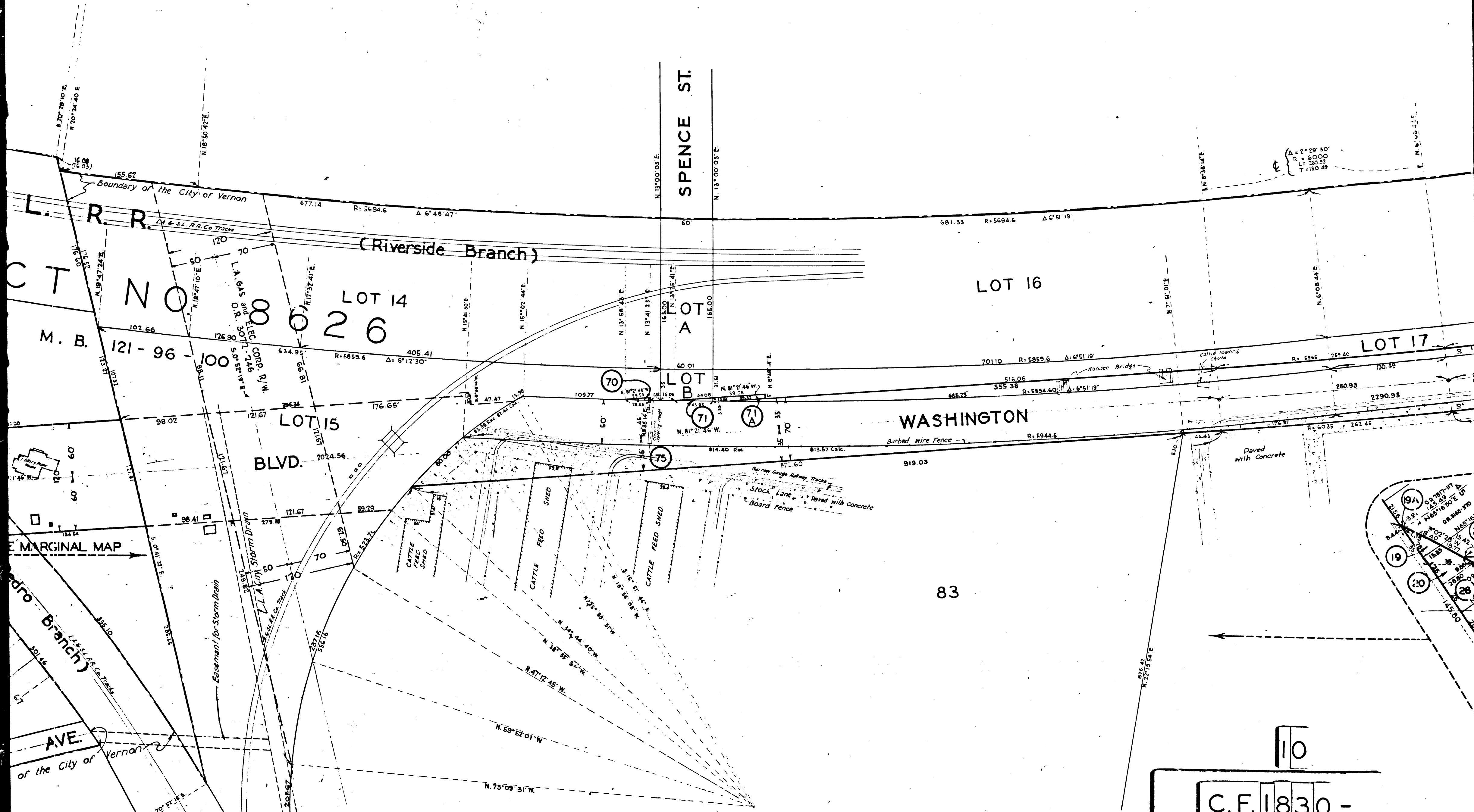
S.C.C. No B - 25296
EXHIBIT "A"

82



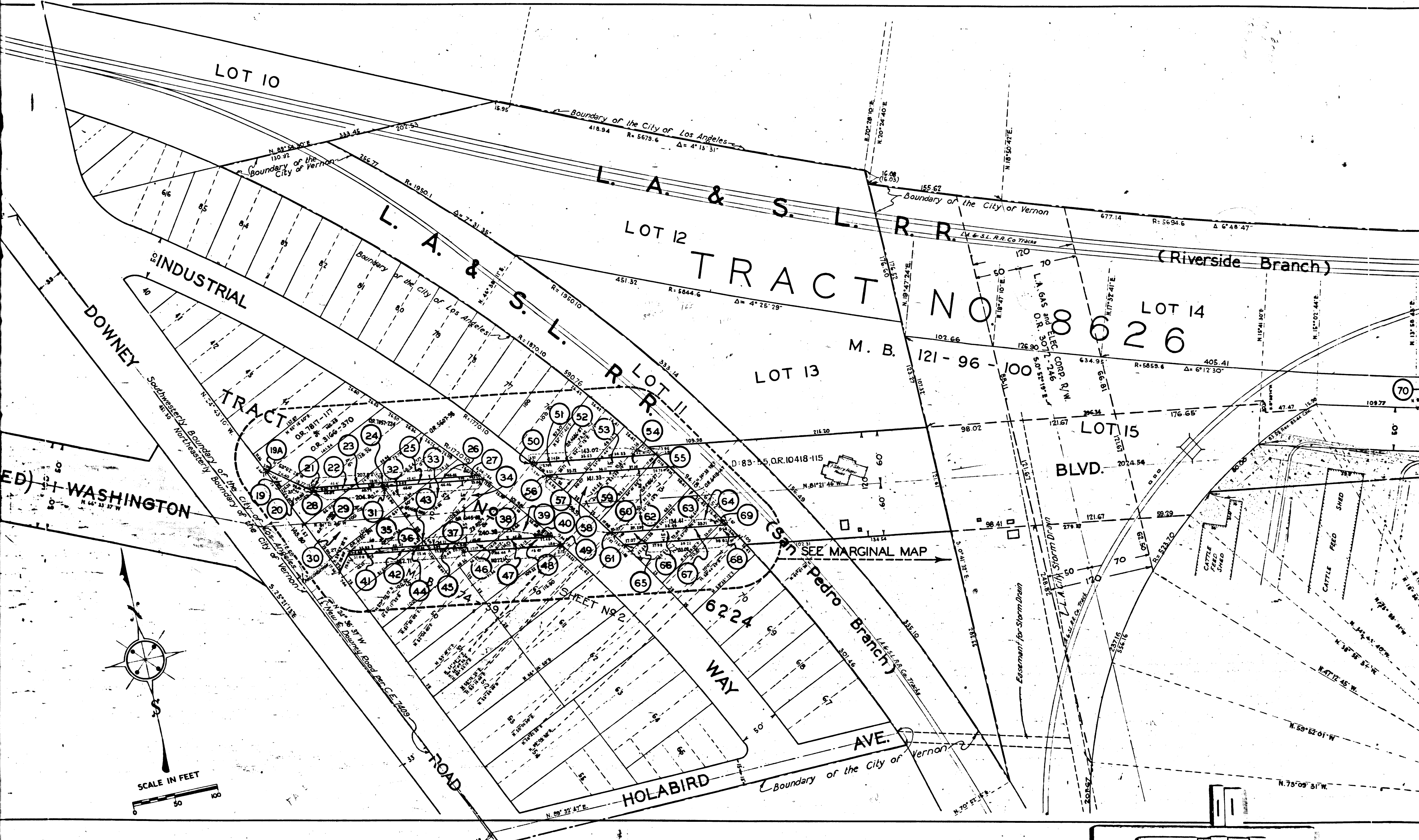
83

C.F. 1830 -



$\Delta = 2^\circ 29' 30"$
 $R = 6000$
 $L = 260.53$
 $T = 130.48$

10
C.F. 1830 -



WASHINGTON

LOT 10

L.A. & S.L.R.R.

TRACT NO

LOT 14
8026

LOT 13
M.B. 121-96-100

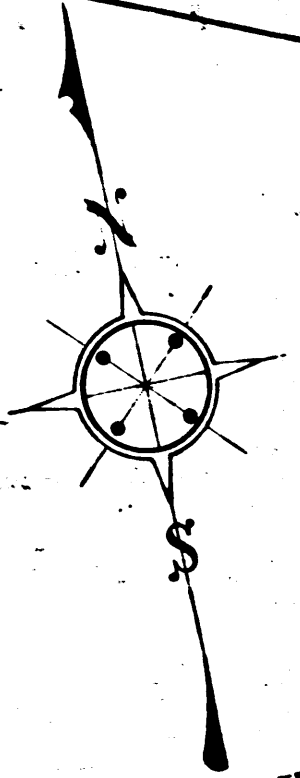
LOT 15
BLVD.

INDUSTRIAL TRACT

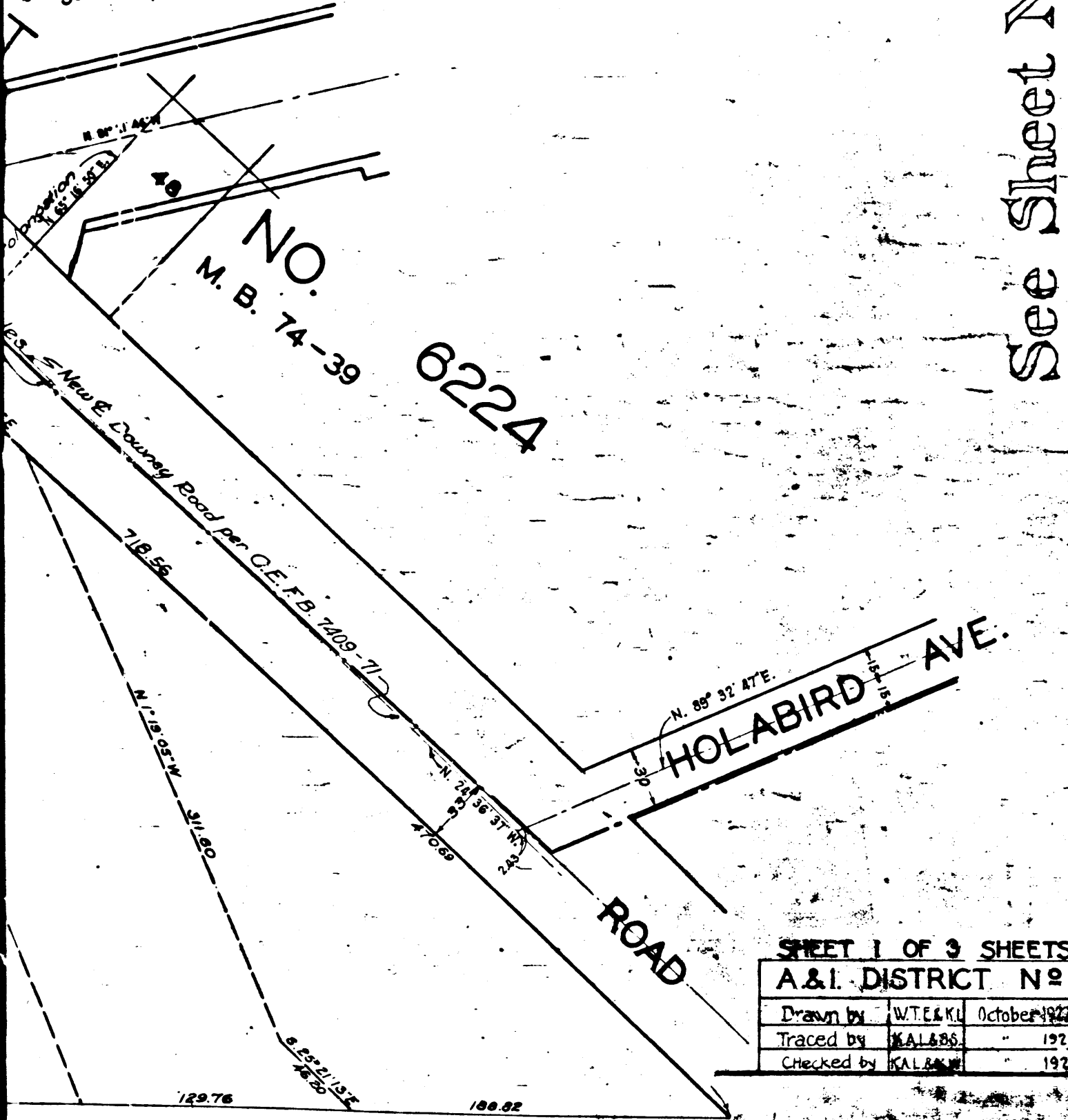
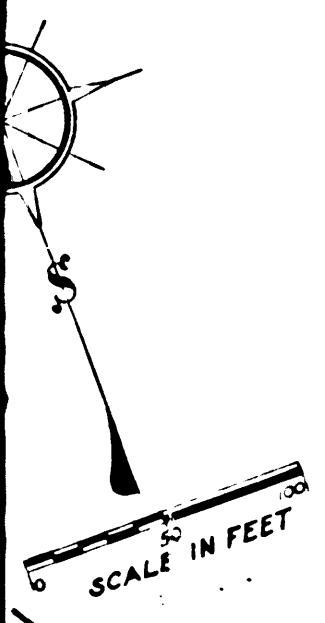
19A, 19, 20, 21, 22, 23, 24, 25, 26, 27, 28, 29, 30, 31, 32, 33, 34, 35, 36, 37, 38, 39, 40, 41, 42, 43, 44, 45, 46, 47, 48, 49, 50, 51, 52, 53, 54, 55, 56, 57, 58, 59, 60, 61, 62, 63, 64, 65, 66, 67, 68, 69

HOLABIRD WAY

AVE.



C.F. 1830 -



NO. M. B. 74-39 6224

See Sheet No. 2

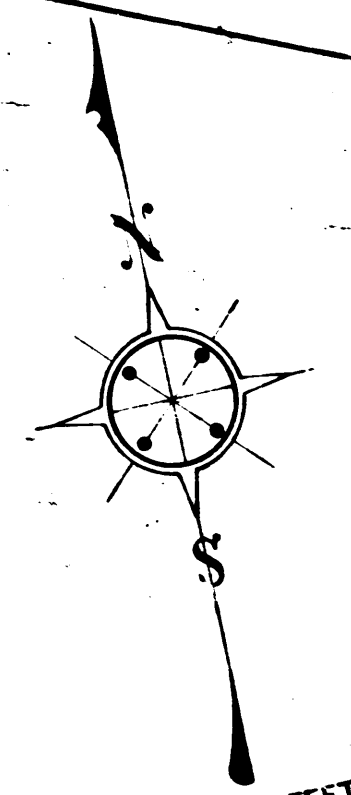
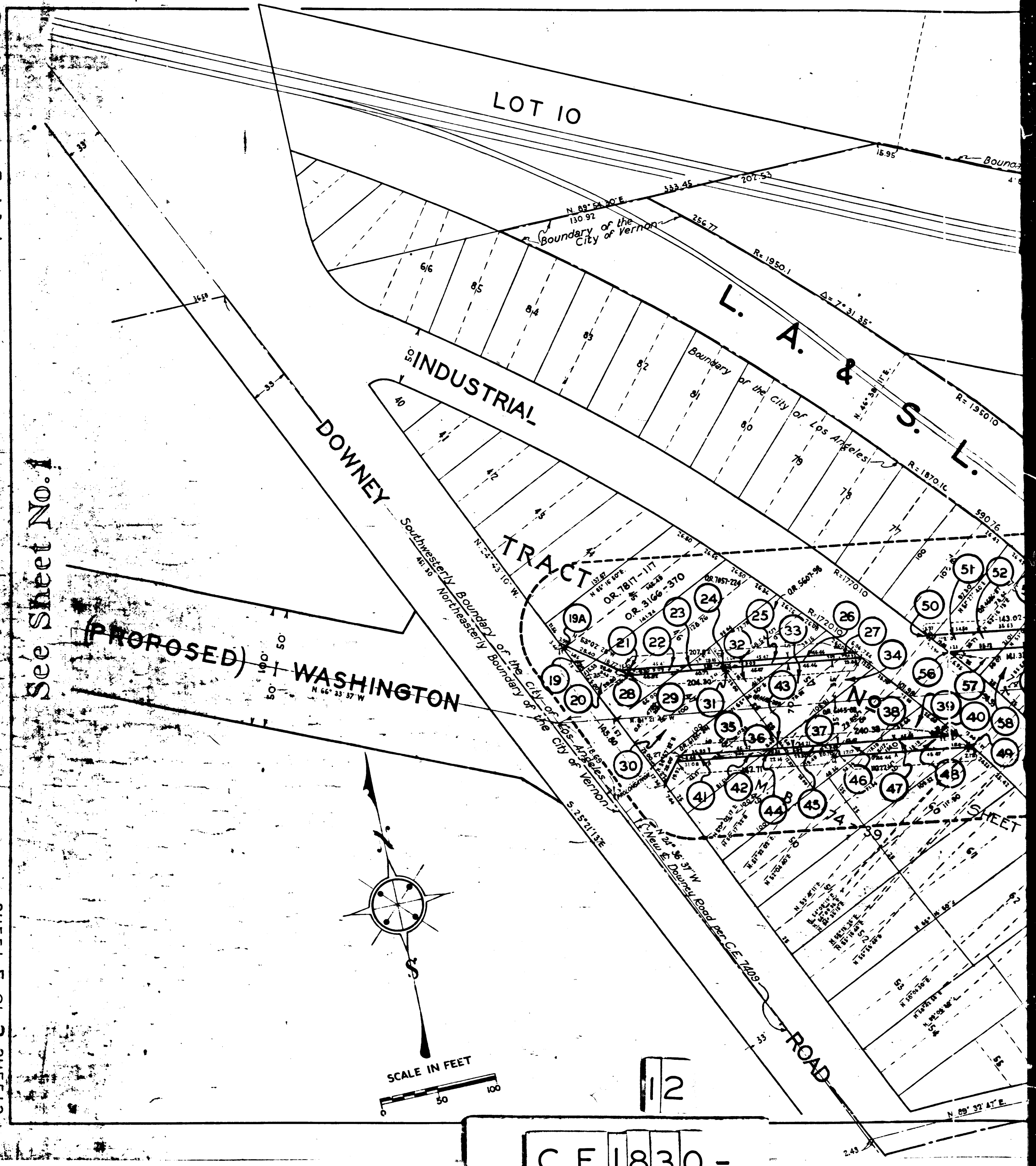
SHEET 1 OF 3 SHEETS		
A & I. DISTRICT No 5		
Drawn by	W.T.E. & K.U.	October 1923
Traced by	K.A.L. & S.S.	1928
Checked by	K.A.L. & S.S.	1928

SHEET 1 OF 3 SHEETS
A & I. DISTRICT No 5
Condensation Map
Washington Blvd
A & I. DISTRICT No 5

SHEET 5 OF 3 SHEETS
A & I. DISTRICT No 2
Condensation Map
Washington Blvd
A & I. DISTRICT No 2

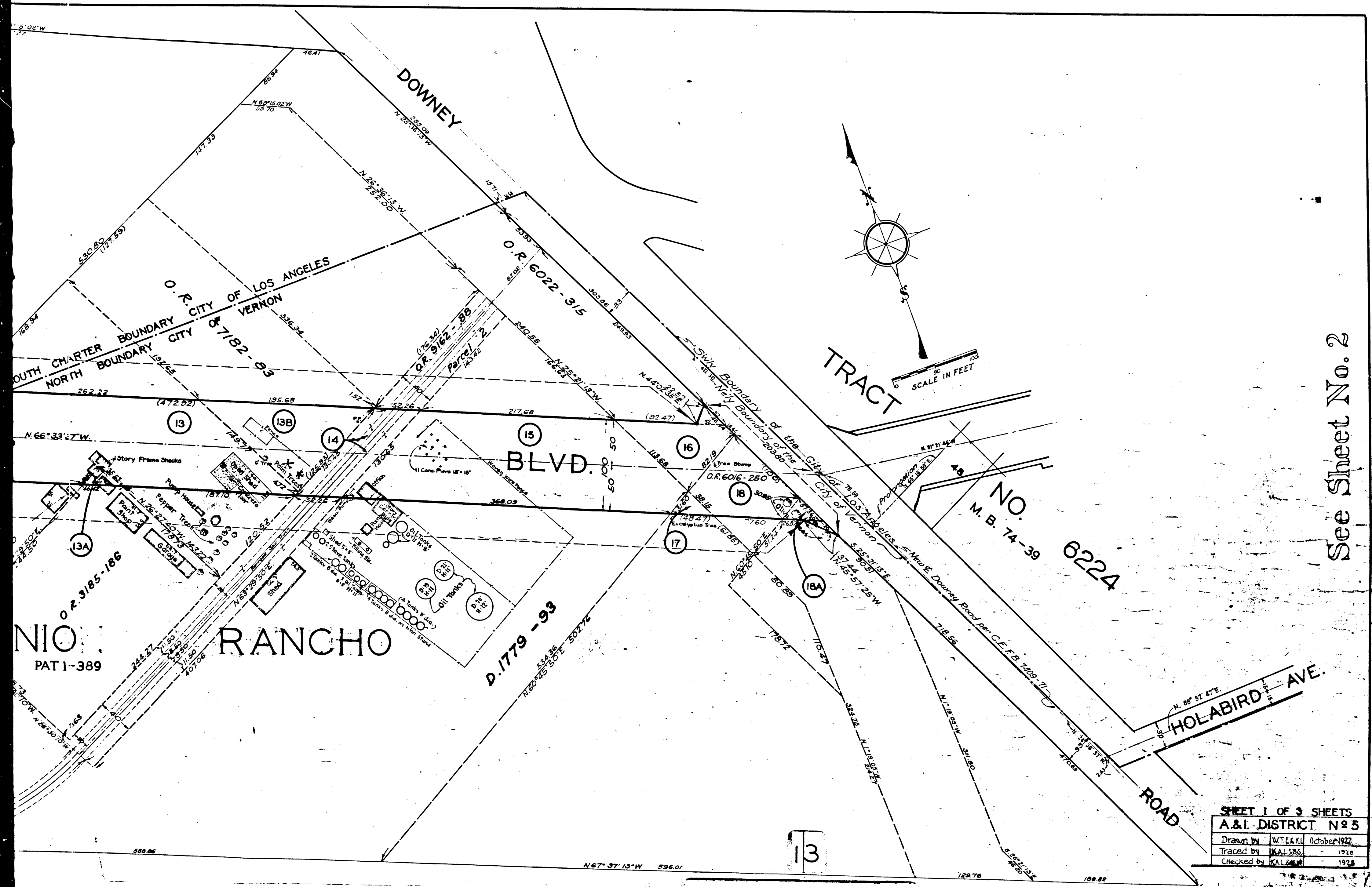
See Sheet No. 1

SHEET 5 OF 3 SHEETS
A & I. DISTRICT No 2
Condensation Map
Washington Blvd
A & I. DISTRICT No 2



C.F. 1830 -

12



See Sheet No. 2

SHEET 1 OF 3 SHEETS
A & I DISTRICT NO 3

Drawn by	W.T.E. & K.L.	October 1922
Traced by	K.A.L. S.B.S.	1922
Checked by	K.A.L. S.B.S.	1922

C.F. 1830 -

2 11 DISTRICT 18 A
A & I DISTRICT NO 3
CONCESSIONARY MAP
APPROVED BY THE
COMMISSIONERS OF THE
LAND OFFICE
JANUARY 1923

SHEET 1 OF 3 SHEETS
A & I DISTRICT NO 3
CONCESSIONARY MAP
APPROVED BY THE
COMMISSIONERS OF THE
LAND OFFICE
JANUARY 1923

THE SUBDIVISION OF THE MARTINEZ TRACT

M.R. 55 - 24.
LOT 2

LOT 1

LOT 3

SHINGTON

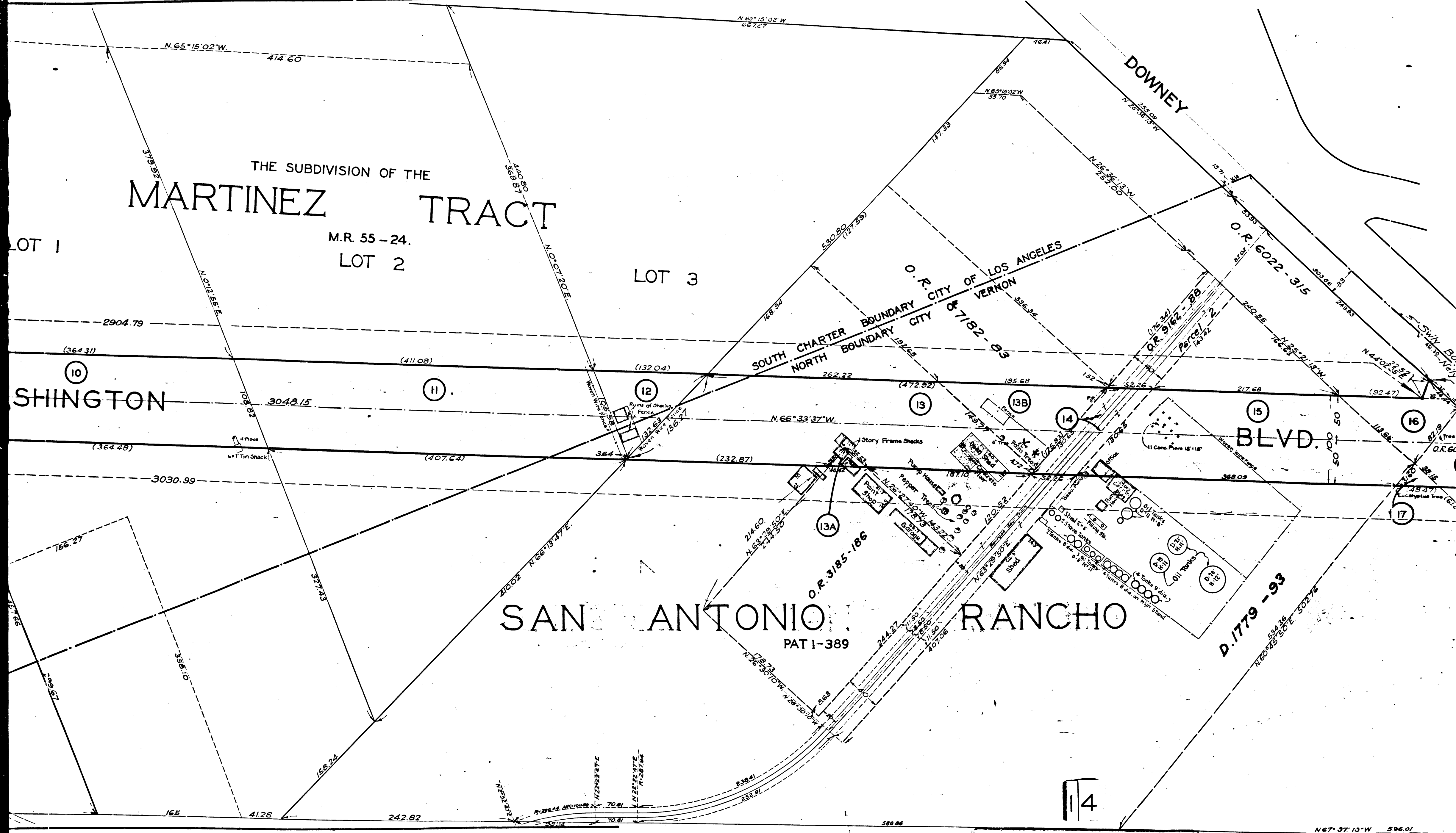
BLVD.

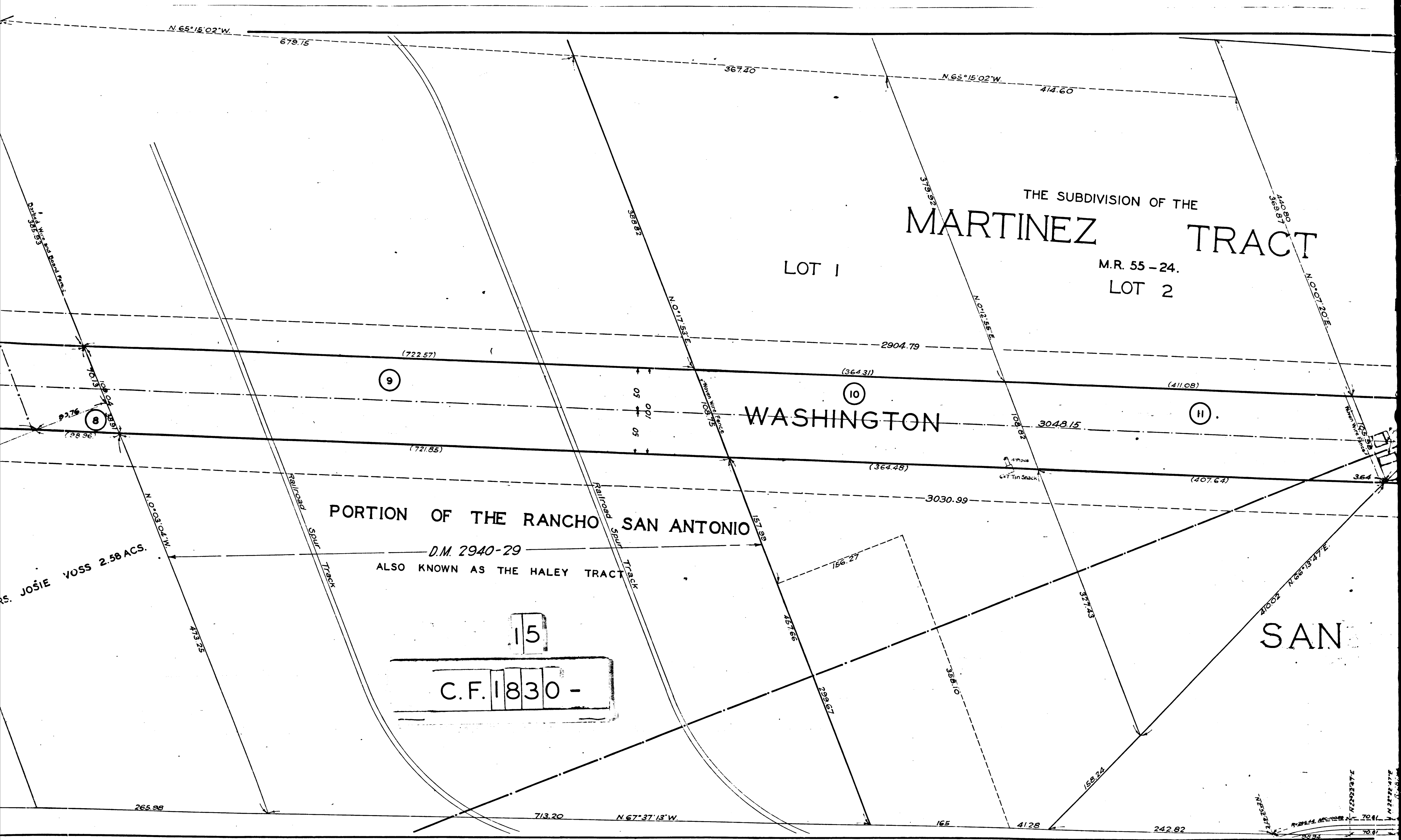
SAN ANTONIO RANCHO

PAT 1-389

D.1779 - 93

C.F. 1830 -





THE SUBDIVISION OF THE
MARTINEZ TRACT

LOT 1

M.R. 55 - 24.
LOT 2

WASHINGTON

PORTION OF THE RANCHO SAN ANTONIO

D.M. 2940-29
ALSO KNOWN AS THE HALEY TRACT

15
C.F. 1830 -

AS. JOSIE VOSS 2.58 ACS.

N. 65° 15' 02" W.

679.15

367.40

N. 65° 15' 02" W.

414.60

410.80
369.87

N. 0° 01' 20" E.

(722.57)

2904.79

(364.31)

(411.08)

3048.15

(407.64)

(721.85)

(364.48)

3030.99

(407.64)

364

Railroad Spurt Track

Railroad Spurt Track

265.98

713.20

N. 67° 37' 13" W.

165

4128

242.82

N. 66° 13' 47" E.

N. 66° 13' 47" E.

N. 66° 13' 47" E.

70.81

70.81

TRACT No 8626

M B 121, 96-100

LOT 8

LOT 9

YORBA DE VEJAR 6.10 ACS.

5.43 ACS.

DUNNE DE LUGO

DOLORES

MARTINEZ 9.3 ACS.

DE (5)

YORBA (6)

YORBA

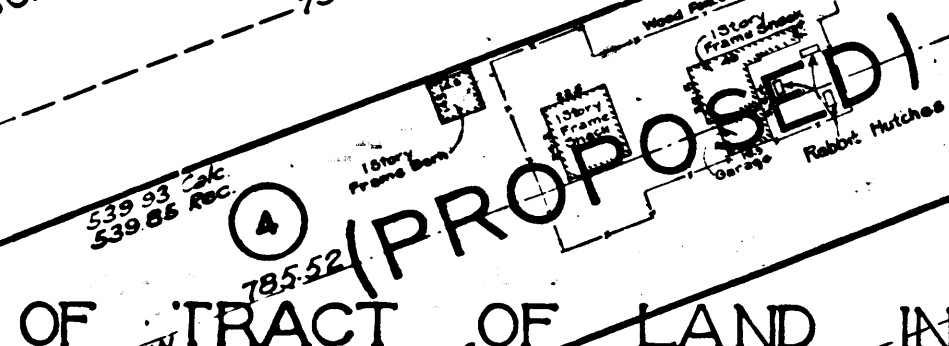
EUSTORGIO

AMELLI

(7)

(9)

(8)



OF TRACT OF LAND IN THE RANCHO SAN ANTONIO

S. C. C. 18306 (C.F. 262)

PORTION OF THE R

D.M. 2940-29

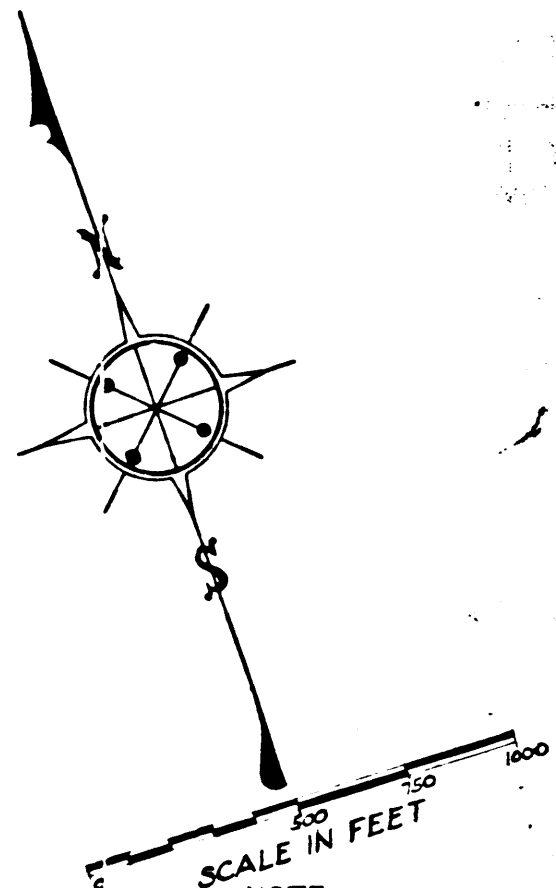
ALSO KNOWN AS THE HA

MRS. JOSIE VOSS 2.58 ACS.

E DATA
Δ=23°08'12"
R=440
T=90.13
L=17780

16
C.F. 1830 -

265.98



SCALE IN FEET
NOTE
Numbers in circles indicate parcel numbers

INDEX TO CONDEMNATION MAPS

A. & I. DISTRICT NO. 5

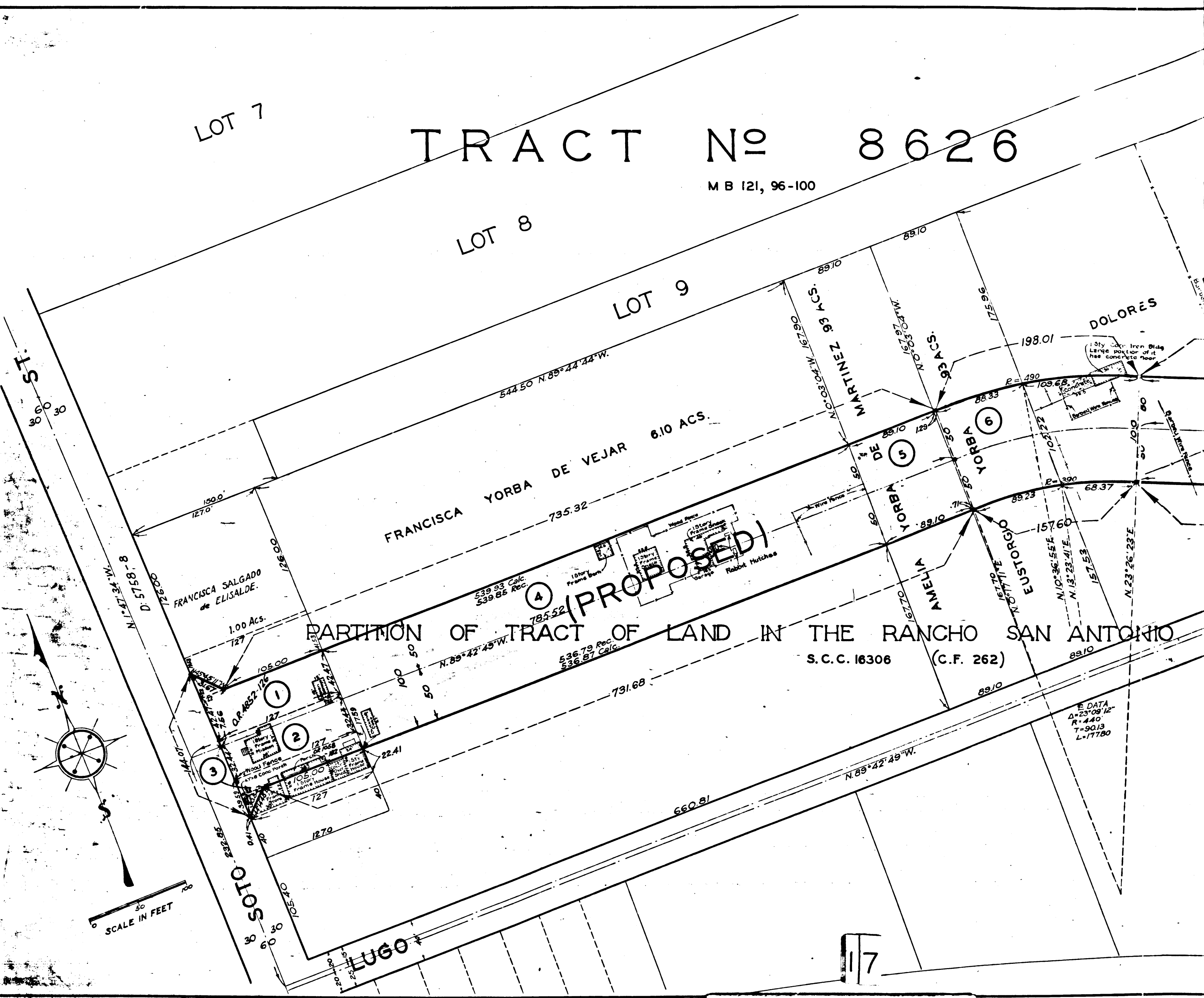
Drawn By	Parker	Oct 1928
Traced By	Parker	Oct 1928
Checked by	Lunt	Oct 1928

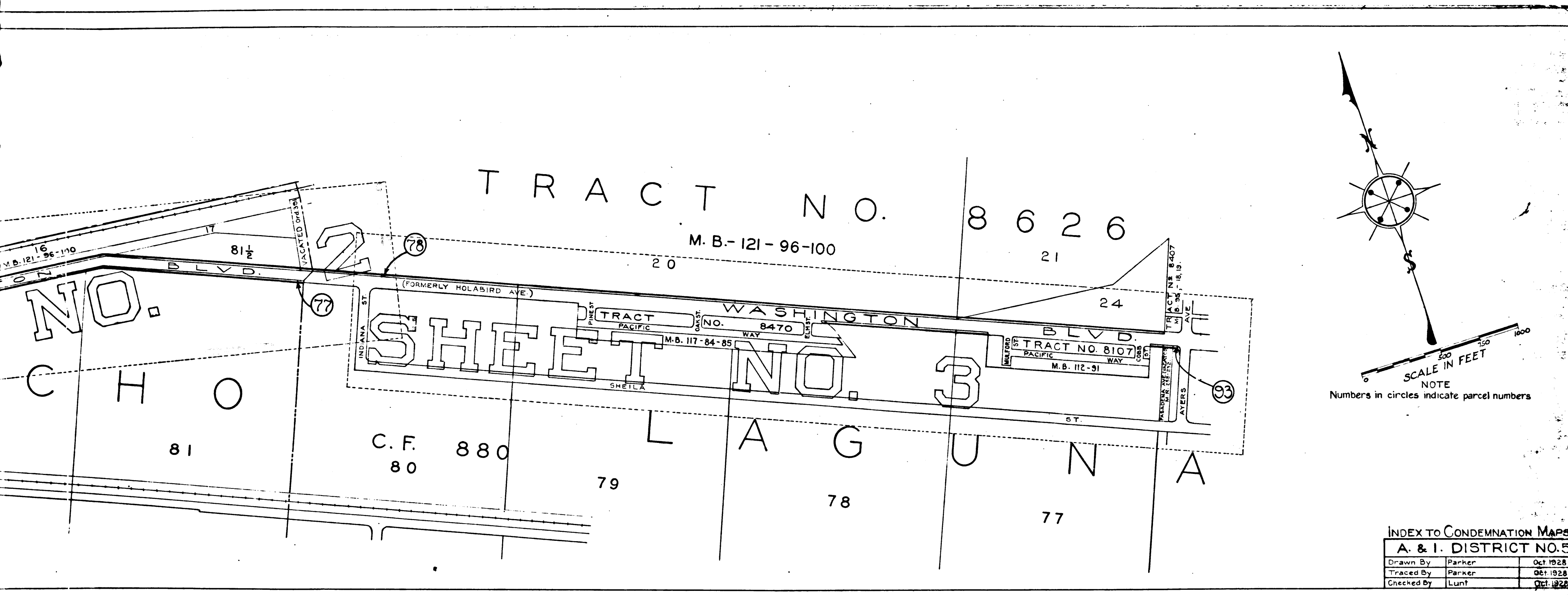
INDEX TO CONDEMNATION MAPS
MARTINEZ BLVD. DISTRICT NO. 2

INDEX TO CONDEMNATION MAPS
MARTINEZ BLVD. DISTRICT NO. 2

Sheet 1 of 2
Condemnation Map
A. & I. DISTRICT NO. 2

2 of 2
Condemnation Map
A. & I. DISTRICT NO. 2





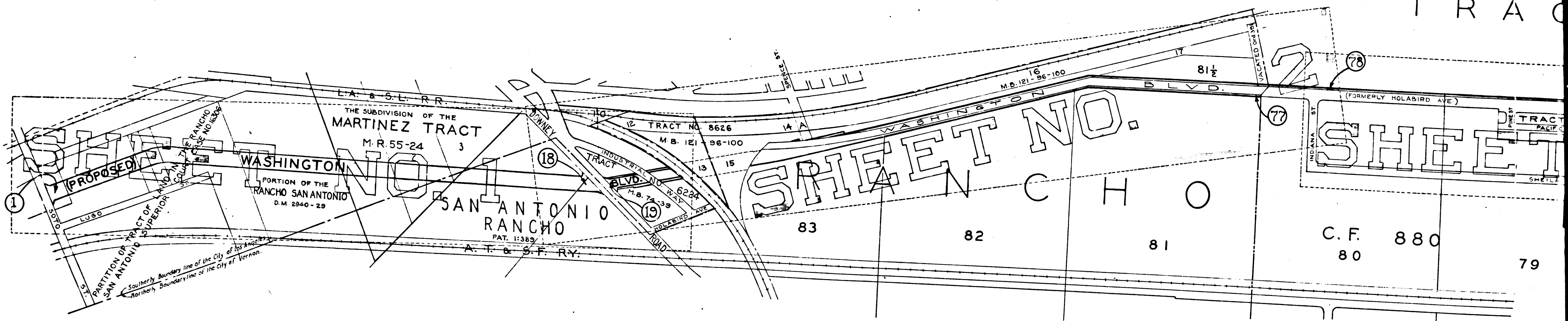
INDEX TO CONDEMNATION MAPS
 A. & I. DISTRICT NO. 5
 PLANNING DIVISION
 OCT. 1928

INDEX TO CONDEMNATION MAPS
 A. & I. DISTRICT NO. 5

Drawn By	Parker	Oct 1928
Traced By	Parker	Oct 1928
Checked By	Lunt	Oct 1928

18

C.F. 1830 -



TRAC

SHEET

C.F. 880
80

19

C.F. 1830 -