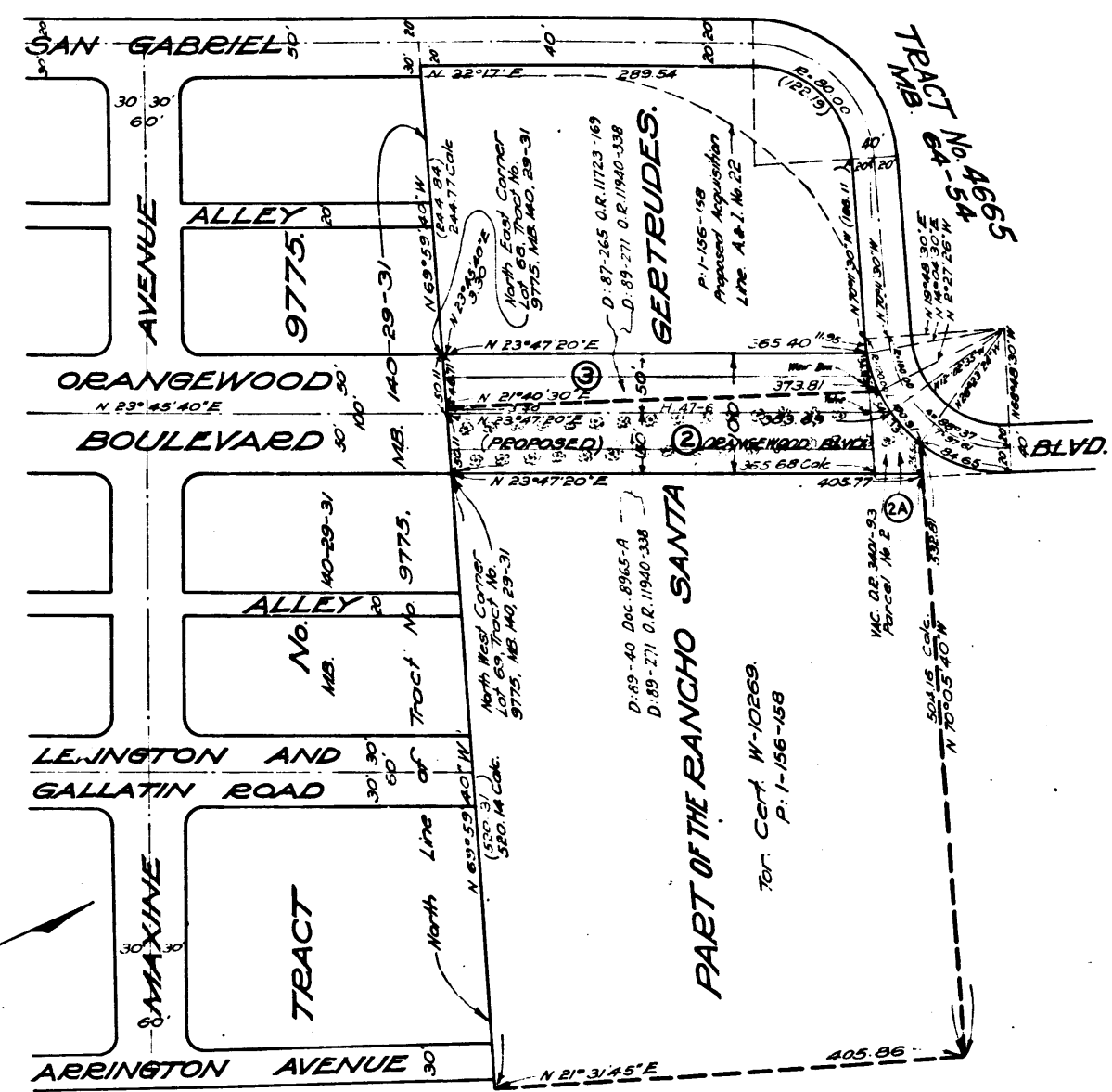
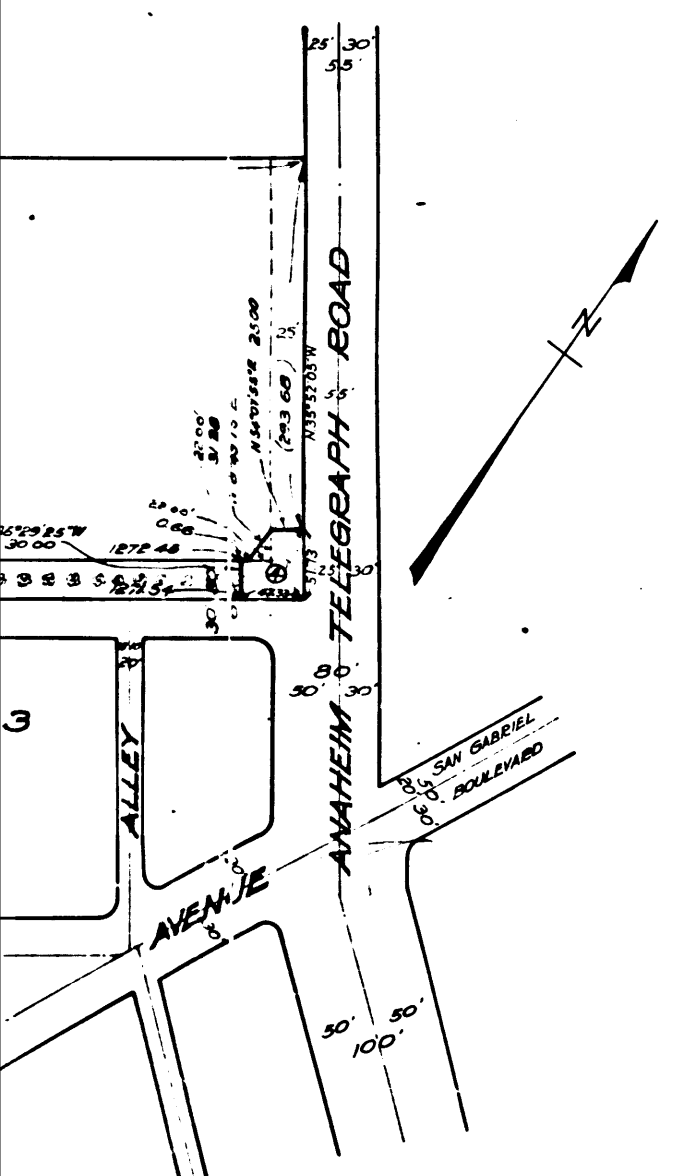
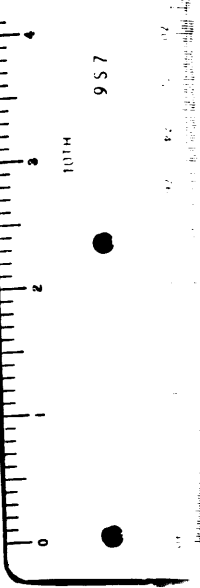
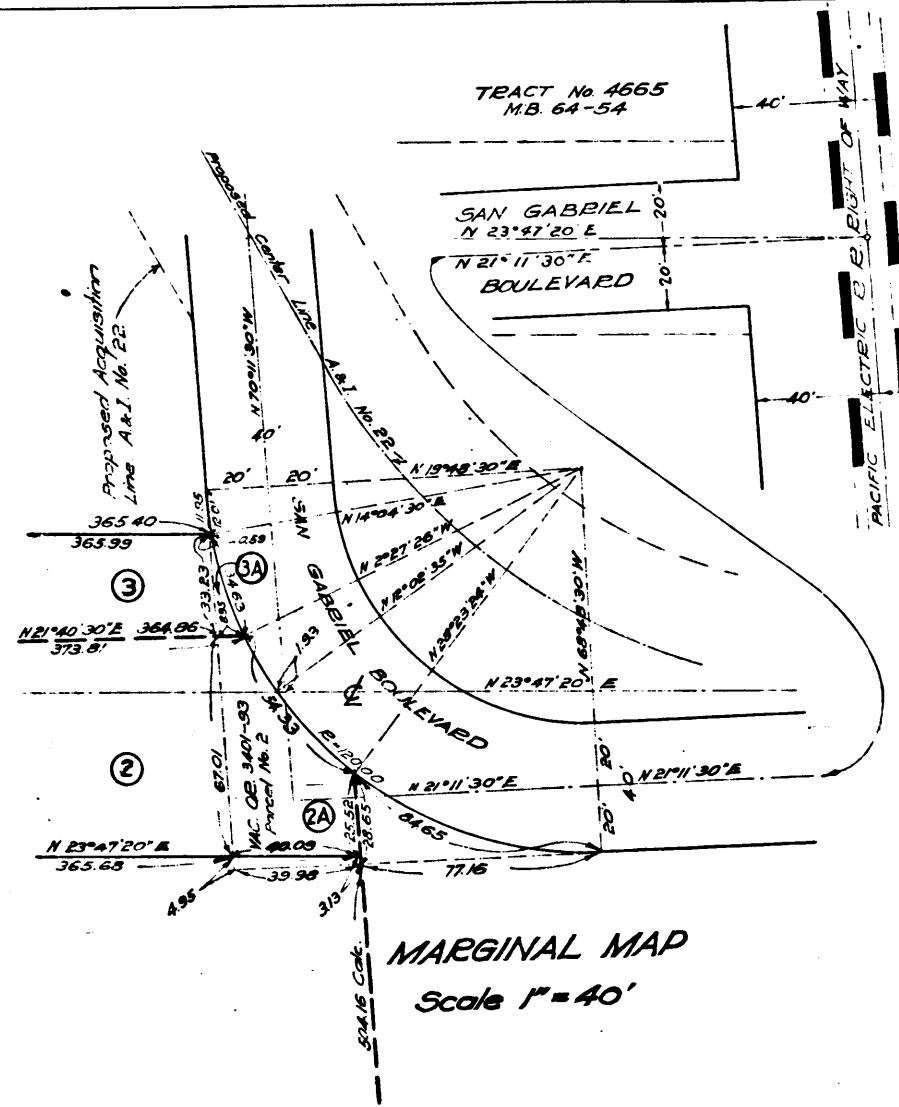


567.3



SCALE: 1"=100'



MARGINAL MAP
Scale 1"=40'

Sht. 36
Superior Court Case No. 307372
Suit for Condemnation
Filed Aug. 13th 1930
County of Los Angeles, Pltff.
Vs
George F. Getty et al, Def.
Case dismissed Nov. 26th 1930.

EXHIBIT "A"
ACQUISITION AND IMPROVEMENT DISTRICT No. 228
OF THE COUNTY OF LOS ANGELES
FOR
THE OPENING, EXTENDING, IMPROVEMENT
OF AND WORK UPON
ORANGEWOOD BOULEVARD
AND
THE WIDENING, IMPROVEMENT
OF AND WORK UPON
STOAKES AVENUE.
AND THE IMPROVEMENT OF AND WORK UPON
SAN GABRIEL BL'VD. ET AL.

MAP SHOWING PROPERTY TO BE ACQUIRED IN ACCORDANCE WITH THE
PROVISIONS OF THE "ACQUISITION AND IMPROVEMENT ACT OF 1925"
APPROVED MAY 23, 1925.

SCALE: 1"=100'

MAY, 1930.

PREPARED BY:
Aldrich & Meyer

APPROVED: *J.E. Rockhold*
J.E. ROCKHOLD,
COUNTY SURVEYOR.

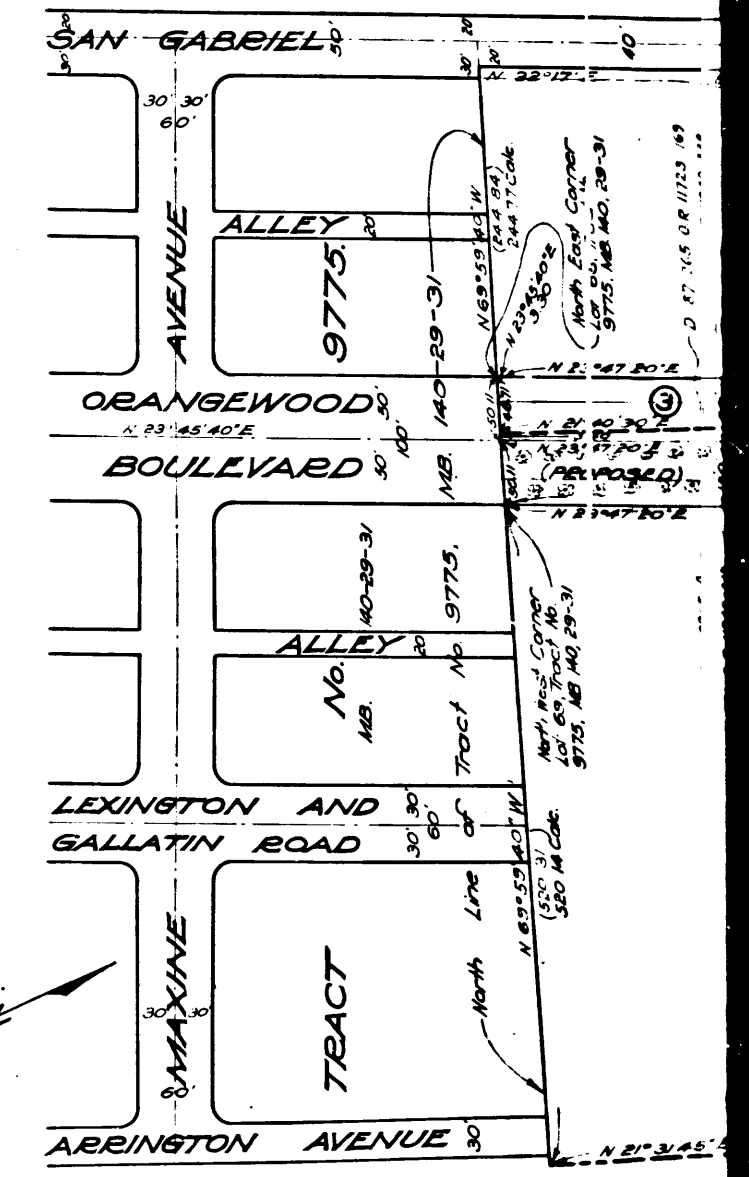
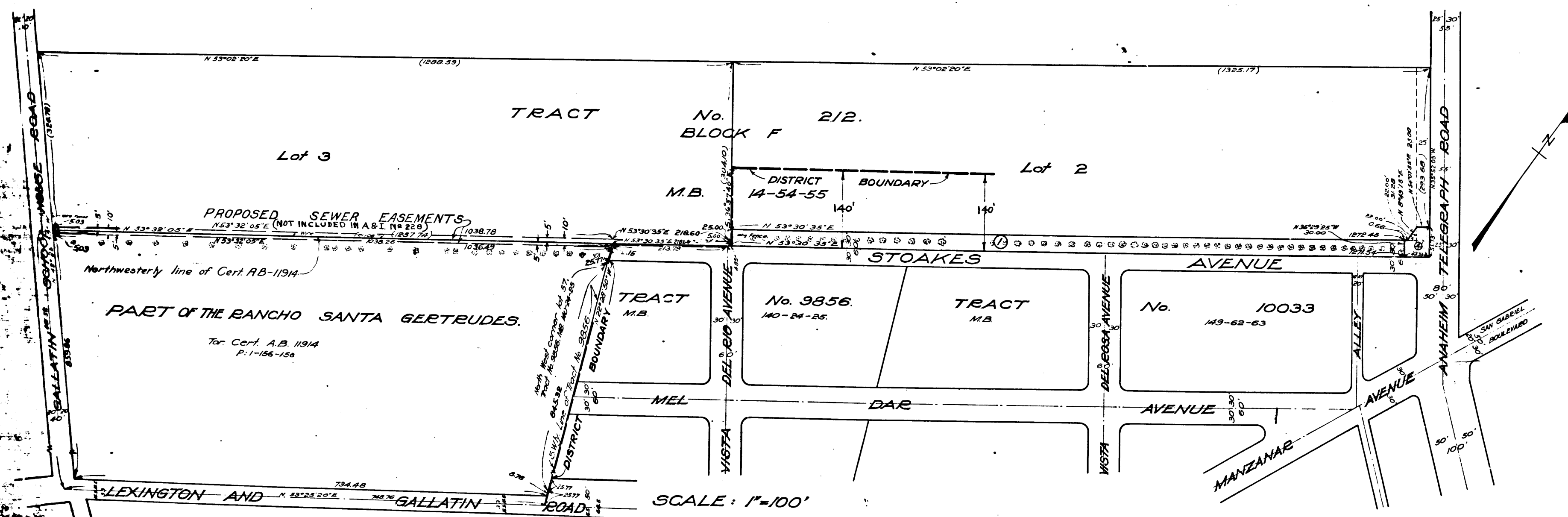
APPROVED AS TO FORM:
EVERETT W. MATTOON, COUNTY COUNSEL.
BY: *W. Woodworth Kennedy*,
DEPUTY COUNTY COUNSEL.

LEGEND
LAND SOUGHT TO BE ACQUIRED SHOWN IN RED.
NUMBERS IN CIRCLES INDICATE PARCELS SOUGHT TO BE CONDEMNED.
PORTION CALLED RED SHOWS LOCATION, GENERAL ROUTE AND TERMINI OF PUBLIC ROAD TO BE CONDEMNED.
FIGURES SHOWN IN PARENTHESES () ARE EITHER RECORDED DISTANCES OR CALCULATED FROM RECORDED DISTANCES.

C.F. 1831 -

937

937



2

C.F. 1831 -