

Sht-6  
Sht-35  
Sht-32

SHT 32-6-

Superior Court Case No. 310386.  
Suit For Condemnation  
Filed Oct. 16<sup>th</sup> 1930  
County of Los Angeles, Plt'ff.  
Vs  
Raymond L. Alvarado et al, Def.  
Proceedings abandoned July 20<sup>th</sup>  
1931. See case for various judg-  
ments of dismissal.

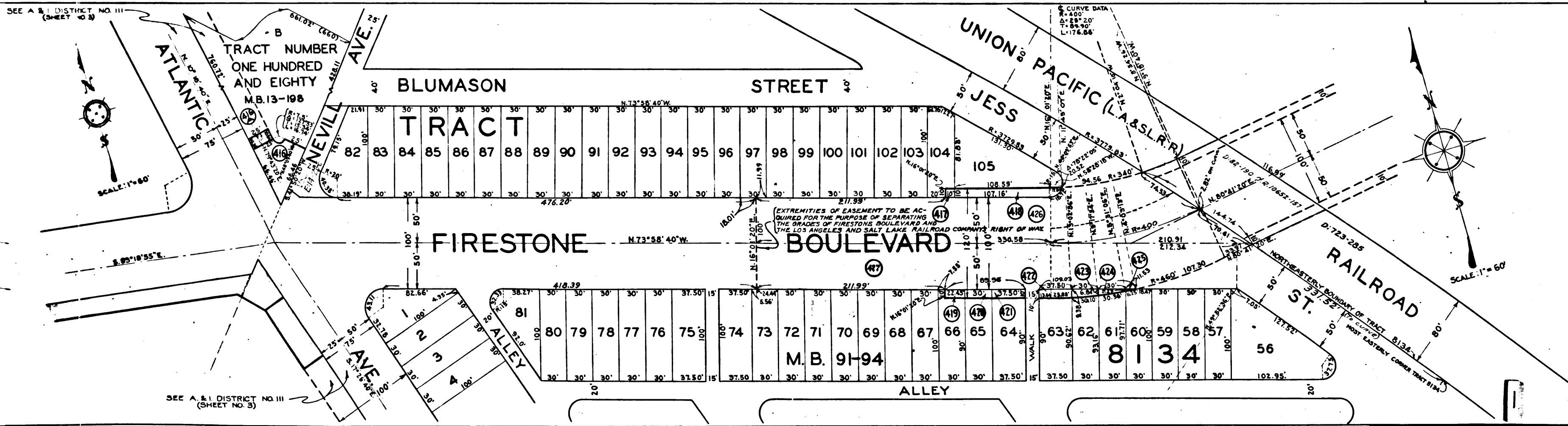


EXHIBIT "A"  
ACQUISITION AND IMPROVEMENT DISTRICT NO. 13  
OF THE COUNTY OF LOS ANGELES  
FOR  
THE OPENING, WIDENING, EXTENDING, IMPROVEMENT OF, AND WORK UPON  
**FIRESTONE BOULEVARD,**  
THE WIDENING, IMPROVEMENT OF, AND WORK UPON  
ATLANTIC AVENUE,  
AND FOR  
THE IMPROVEMENT OF, AND WORK UPON  
MANCHESTER AVENUE, ET AL.  
MAP SHOWING PROPERTY TO BE ACQUIRED, IN ACCORDANCE WITH THE  
PROVISIONS OF THE ACQUISITION AND IMPROVEMENT ACT OF 1925.  
APPROVED MAY 23, 1925. COMMONLY KNOWN AS THE "MATTOON ACT."  
SCALES AS SHOWN: OCTOBER, 1930.  
J. E. ROCKHOLD — COUNTY SURVEYOR

LEGEND  
PORTION COLORED RED SHOWS LOCATION, GENERAL ROUTE  
AND TERMINI OF LAND IN WHICH AN EASEMENT FOR  
PUBLIC HIGHWAY PURPOSES IS SOUGHT TO BE ACQUIRED.  
PORTION COLORED YELLOW SHOWS LOCATIONS OF  
LAND IN WHICH AN EASEMENT IS SOUGHT TO BE ACQUIRED  
OTHER THAN FOR PUBLIC HIGHWAY PURPOSES.  
NUMBERS IN CIRCLES INDICATE PARCELS SOUGHT TO BE CONDEMNED.  
THE PARCELS ARE DESCRIBED IN PARAGRAPH VII OF THE COMPLAINT.

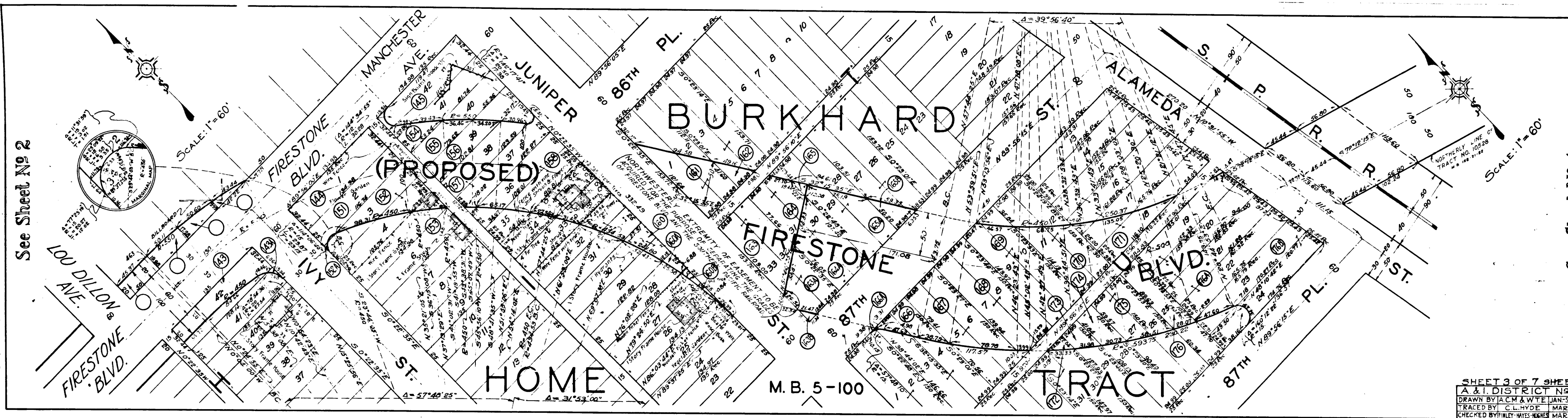
SHEET 7 OF 7 SHEETS  
ART. DISTRICT NO. 13  
DRAWN BY: A. C. MILLER, JAN. 9, 1927  
TRACED BY: A. C. MILLER, JAN. 9, 1927  
CHECKED BY: G. W. MOORE, FEB. 9, 1927

Negatives of Sheets 3, 4, 5, 6 & 7 of this map  
filed in Blue Print Dept. as Neg. No. 169

C.F. 1835-



SHEET 1 OF 7 SHEETS  
 CONDEMNATION MAP  
 FIRESTONE BLVD  
 V & I DISTRICT NO 13



See Sheet No 2

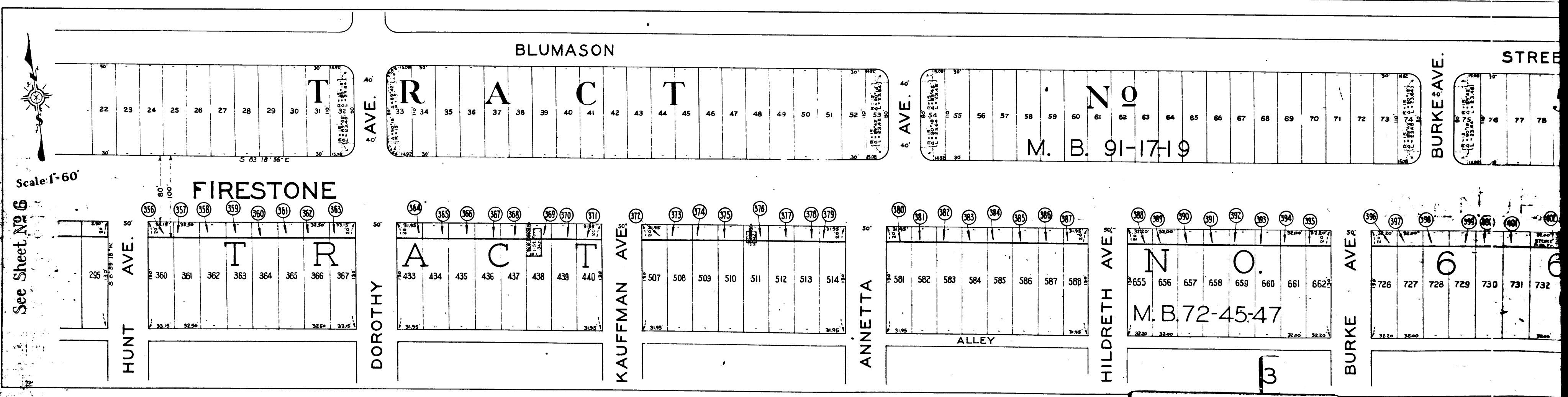
SHEET 3 OF 7 SHEETS  
 A & I DISTRICT NO 13  
 CONDEMNATION MAP  
 FIRESTONE BLVD  
 V & I DISTRICT NO 13

See Sheet No 4

SHEET 3 OF 7 SHEETS  
 A & I DISTRICT NO 13  
 DRAWN BY T. C. M. & W. T. J. MAR 1929  
 CHECKED BY W. L. W. MAR 1929

SHEET 6 OF 7 SHEETS  
 A & I DISTRICT NO 13  
 CONDEMNATION MAP  
 FIRESTONE BLVD  
 V & I DISTRICT NO 13

SHEET 1 OF 7 SHEETS  
 CONDEMNATION MAP  
 FIRESTONE BLVD  
 V & I DISTRICT NO 13

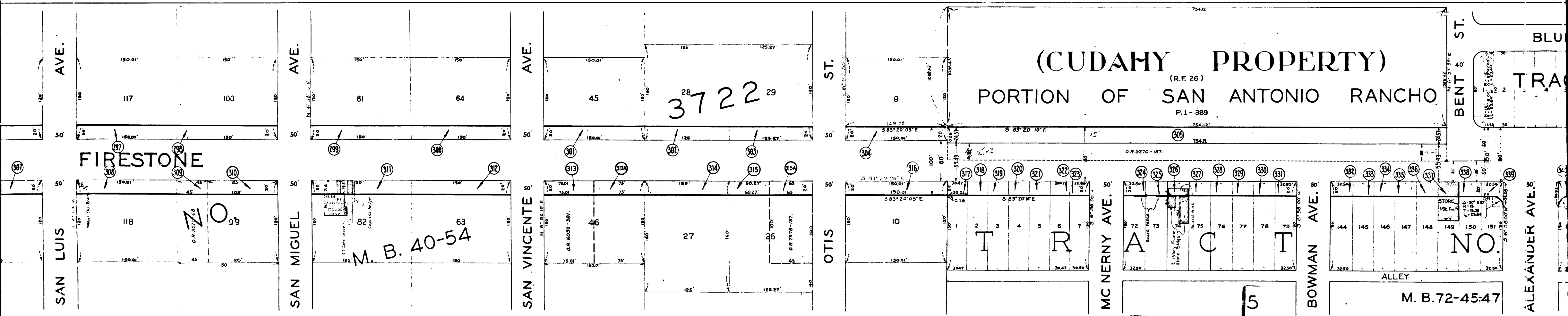
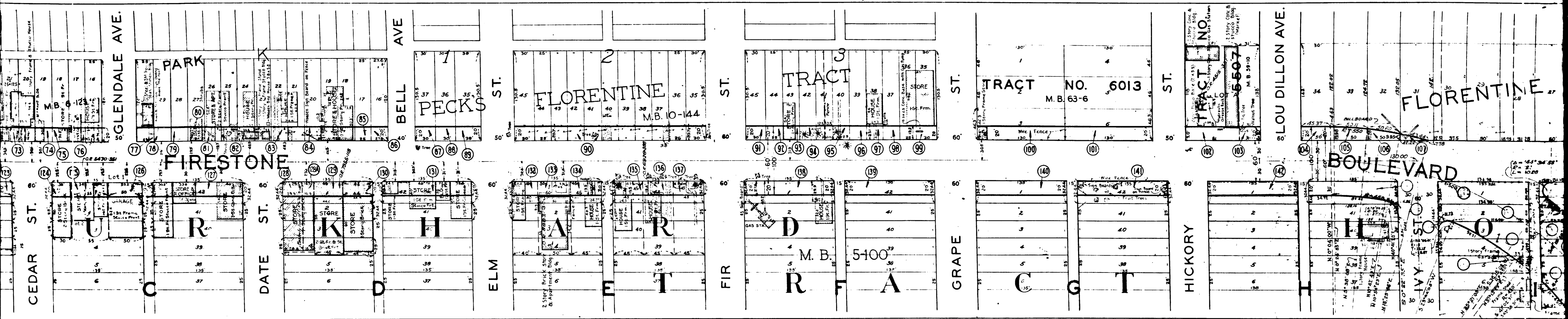


Scale: 1"=60'

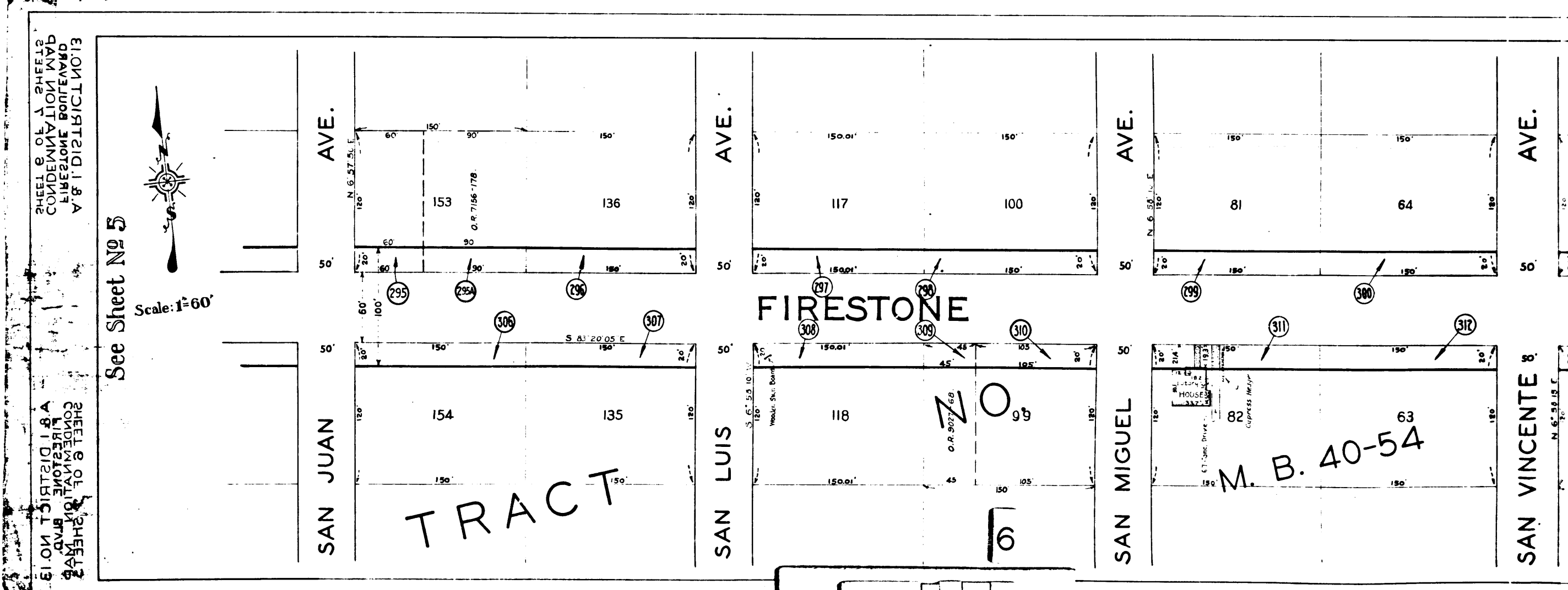
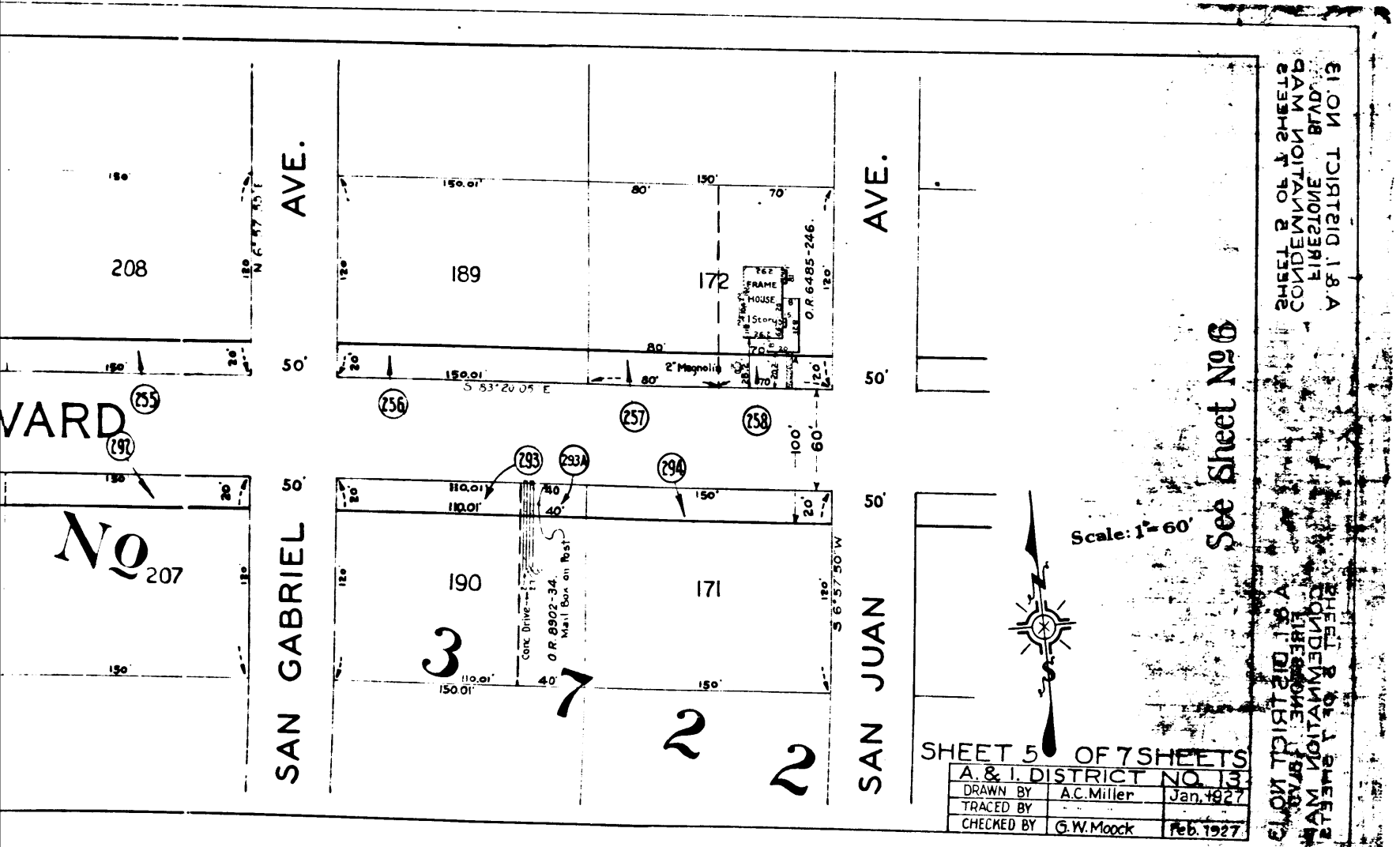
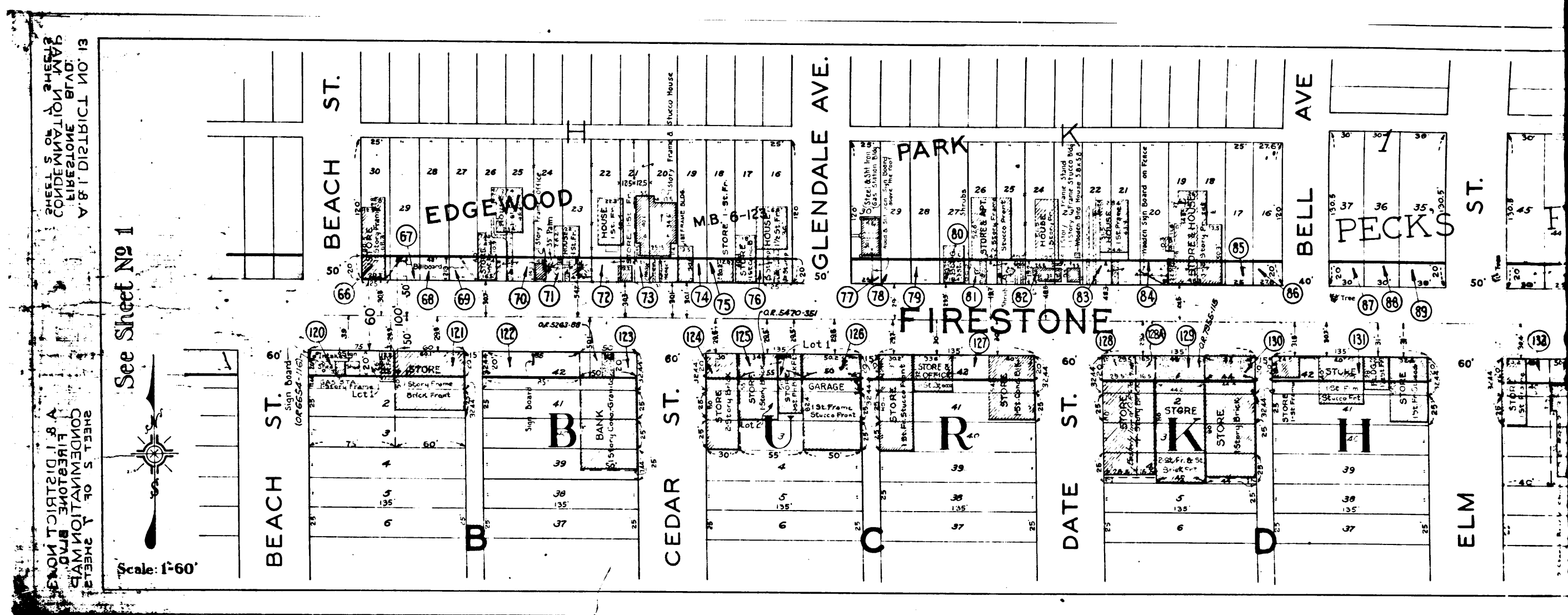
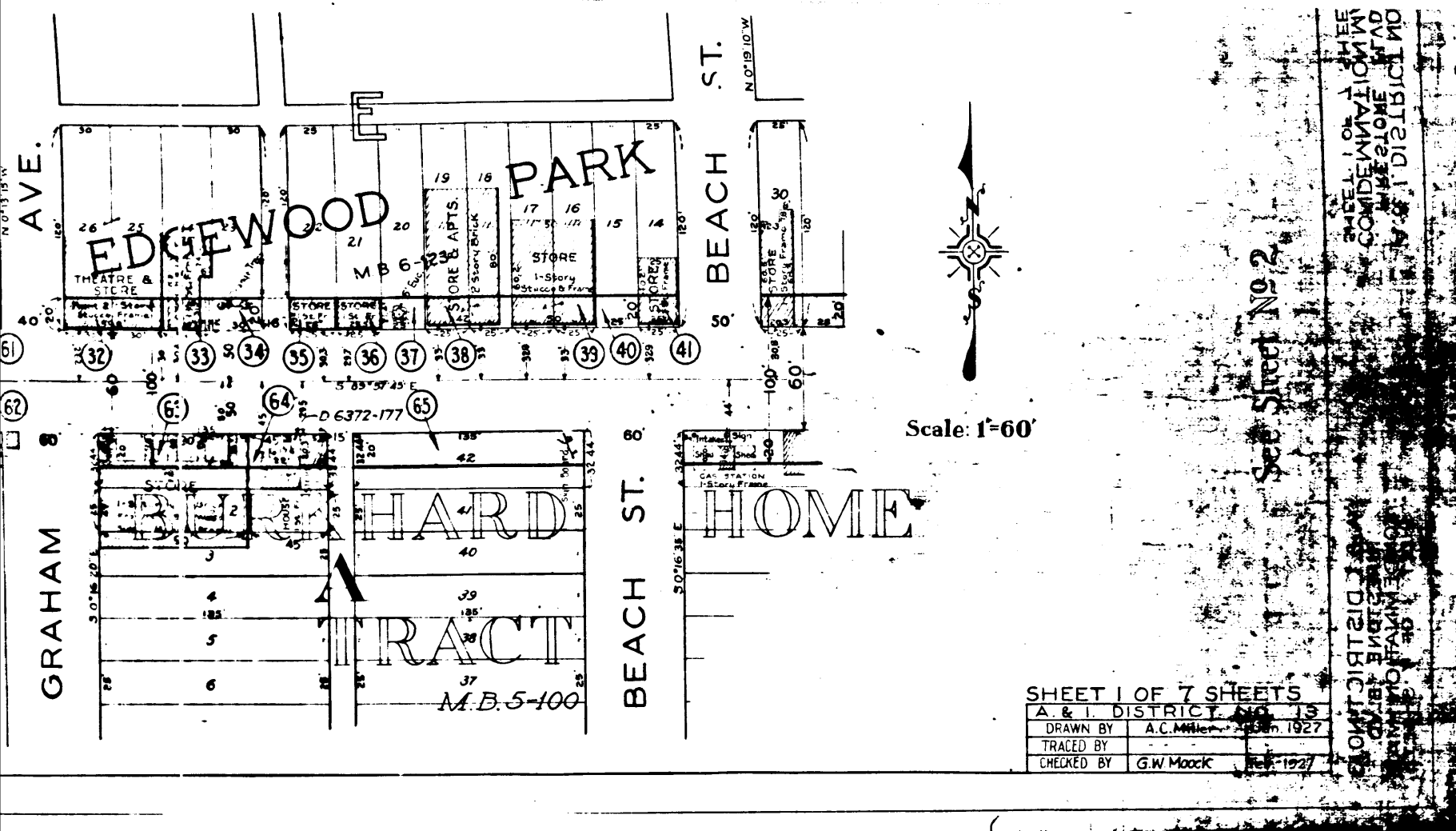
See Sheet No 6

C.F. 1835-



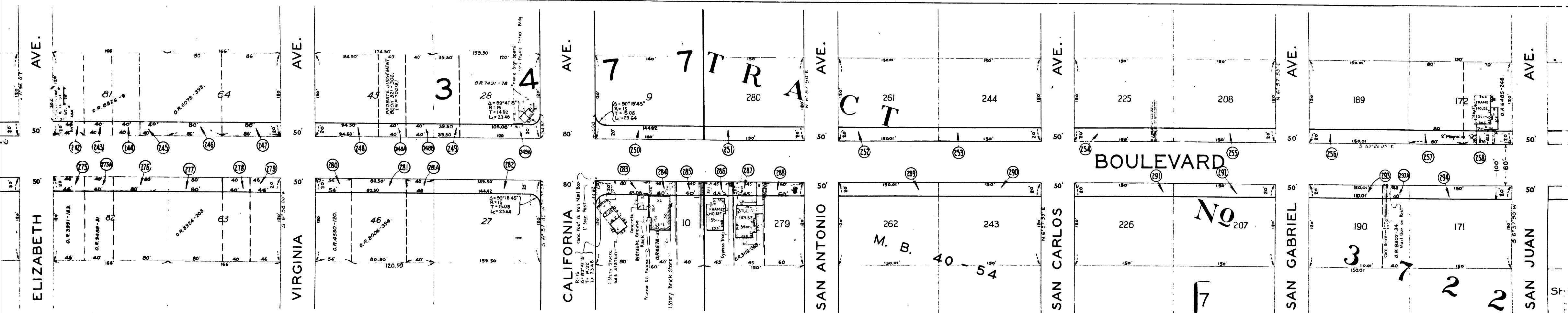
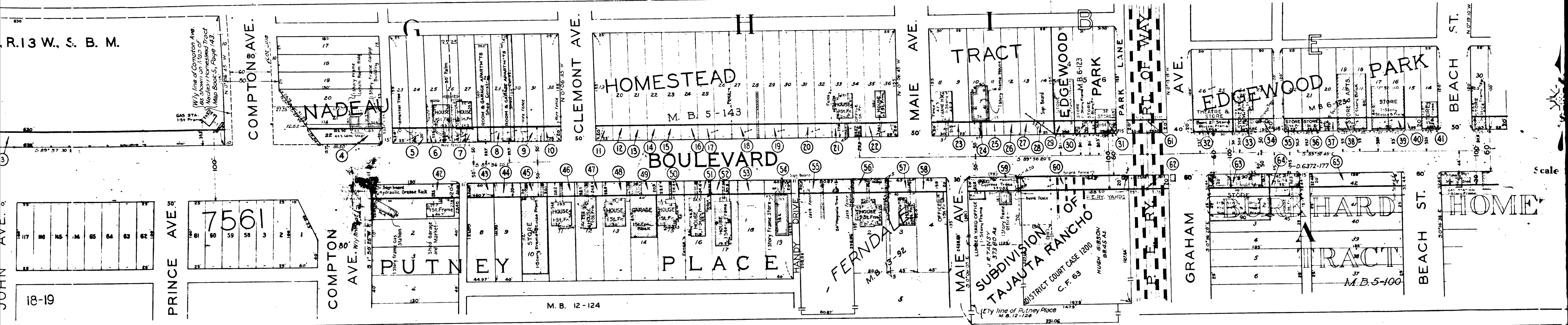


C.F. 1835-

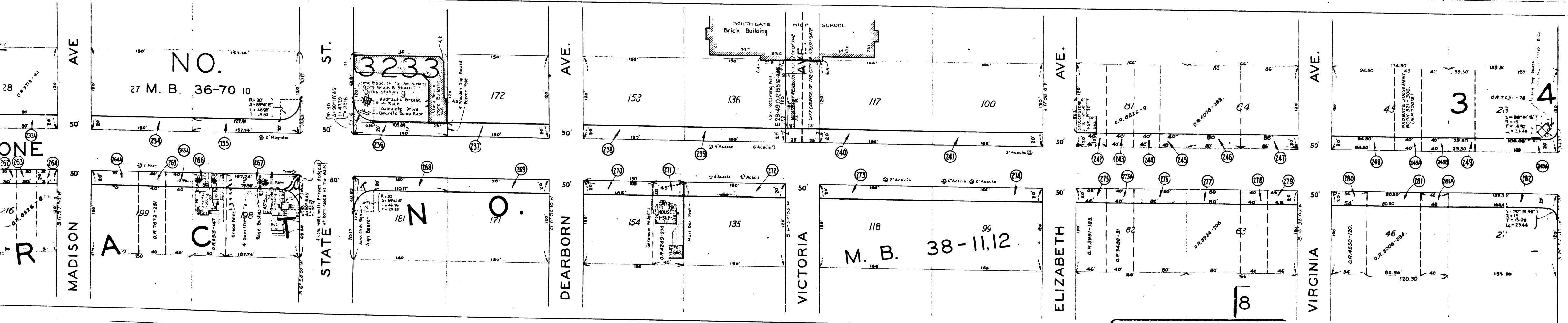
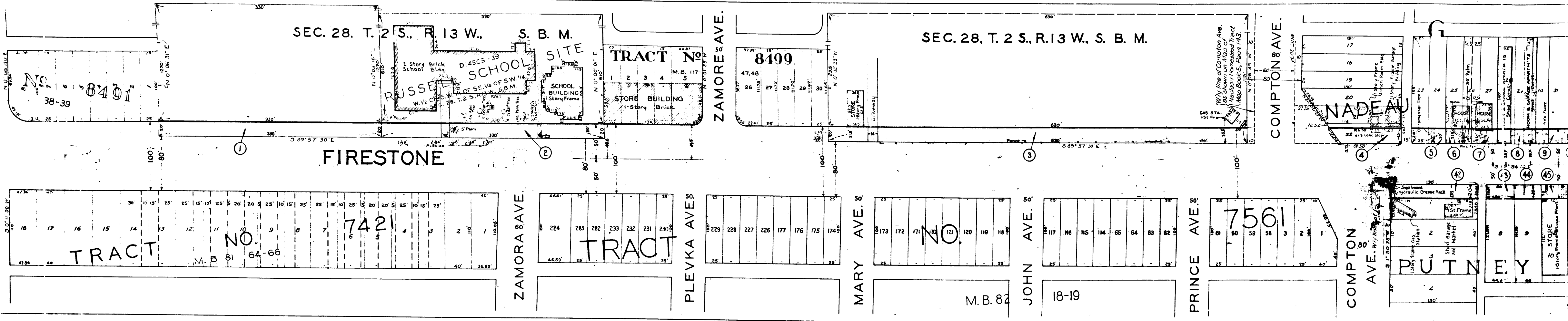


C.F. 1835-

M. B. 40-54



C.F. 1835-

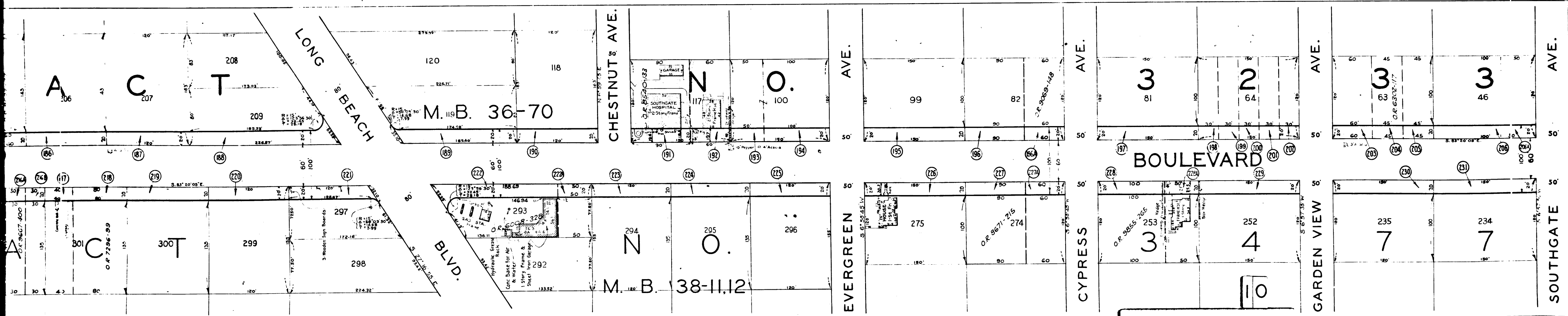
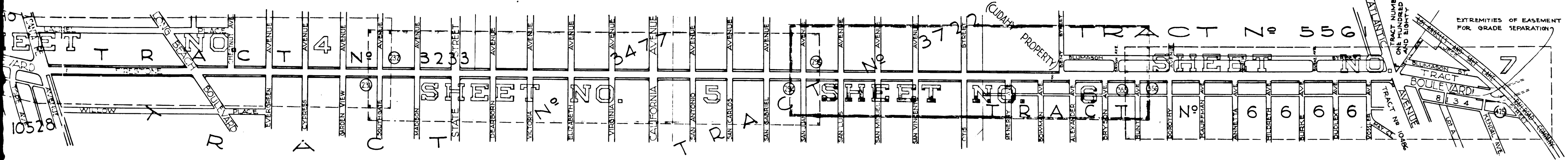


C.F. 1935-





OF EASEMENT  
OF PARALLEL



C.F. 1835-

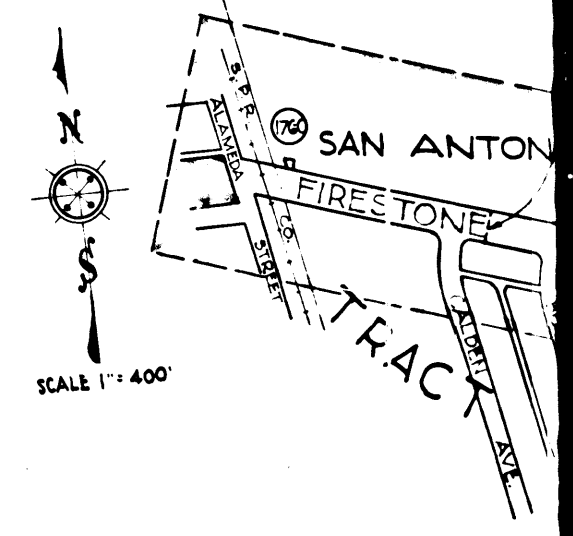
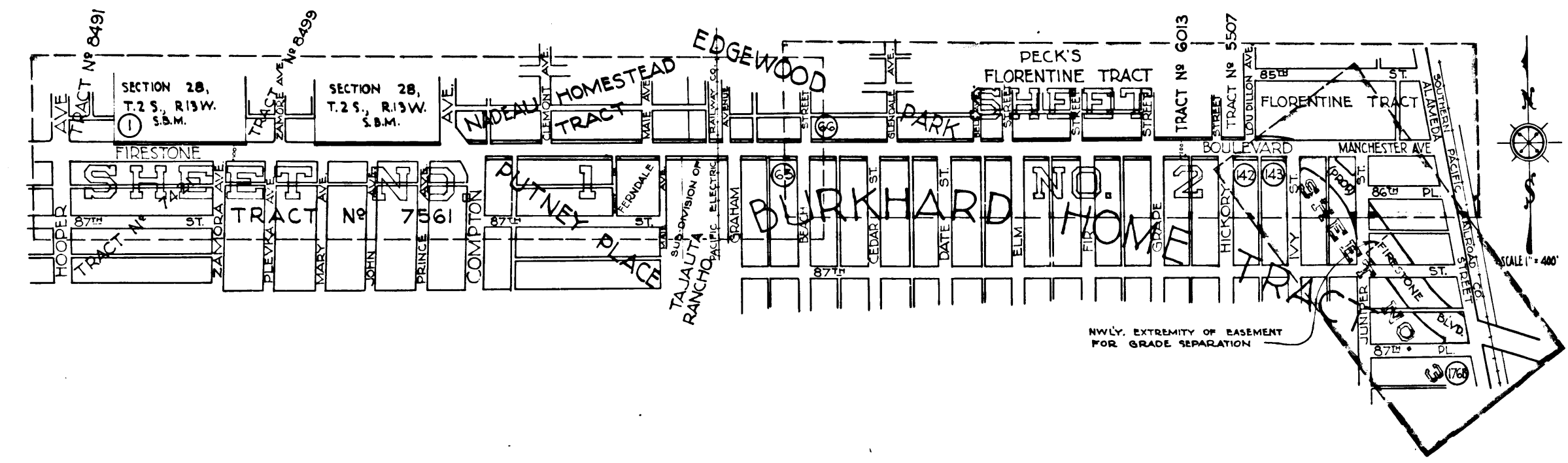
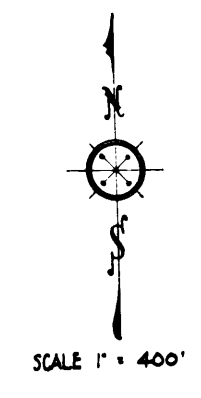


INDEX TO CONVEYANCES

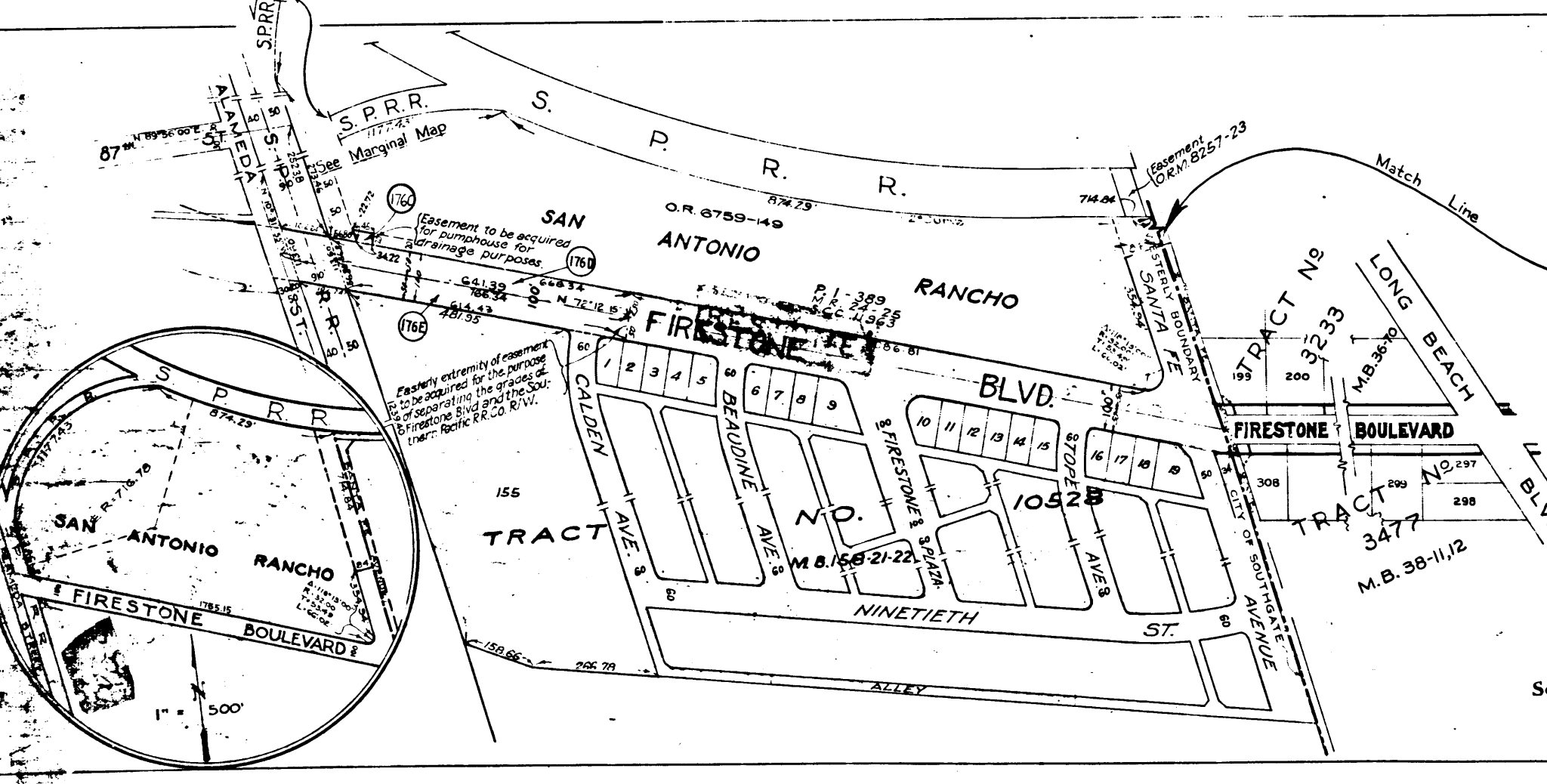
LIBERTY DISTRICT No 13

957

100'



San Antonio Firestone Tract No 3



Scale: 1" = 200'

Scale: 1" = 60'

C.F. 1835-

12