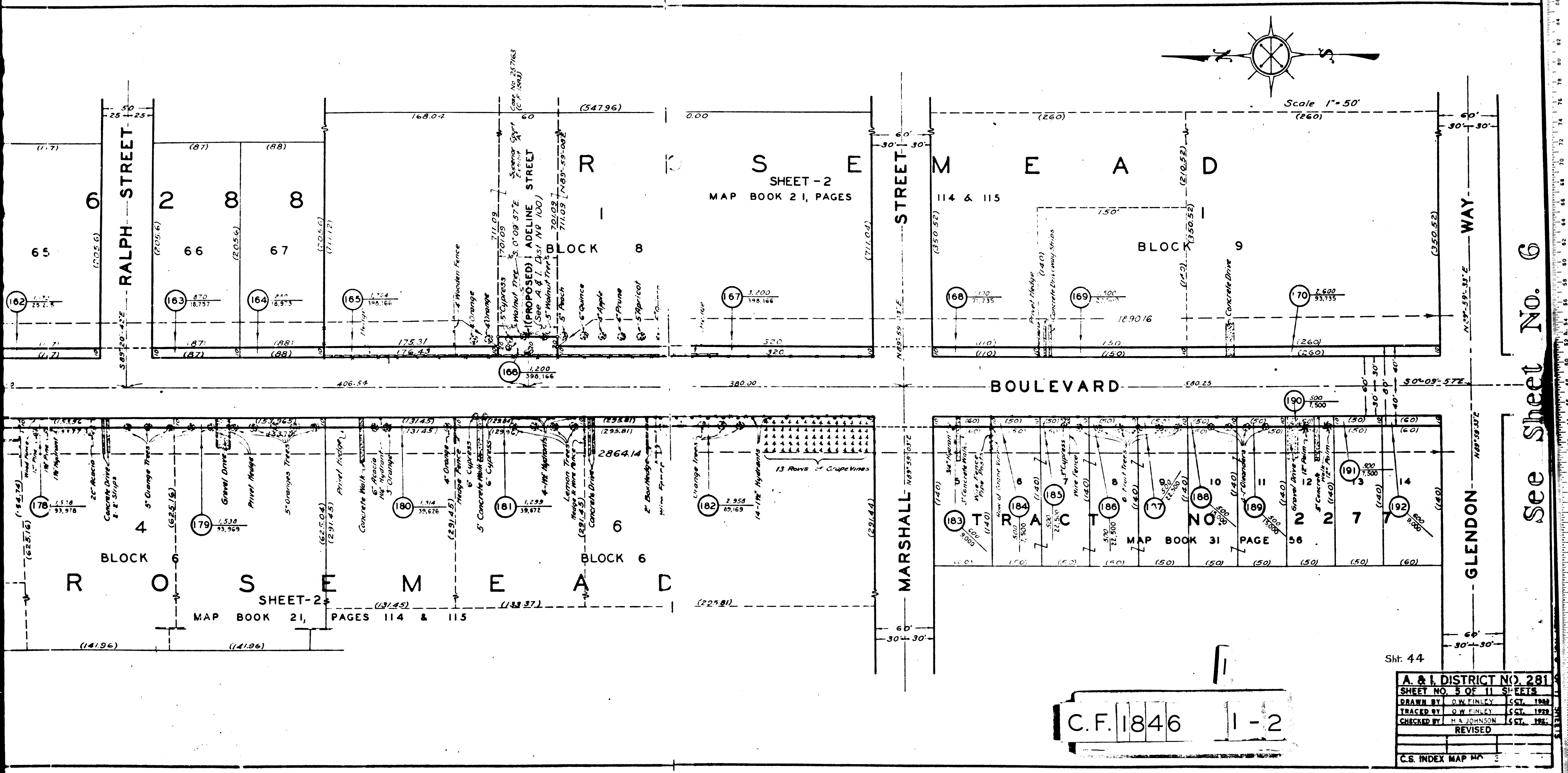


Scale 1"=50'



SHEET - 2
MAP BOOK 21, PAGES

BOULEVARD

SHEET - 2
MAP BOOK 21, PAGES 114 & 115

MAP BOOK 31
PAGE 56

C.F. 1846 1-2

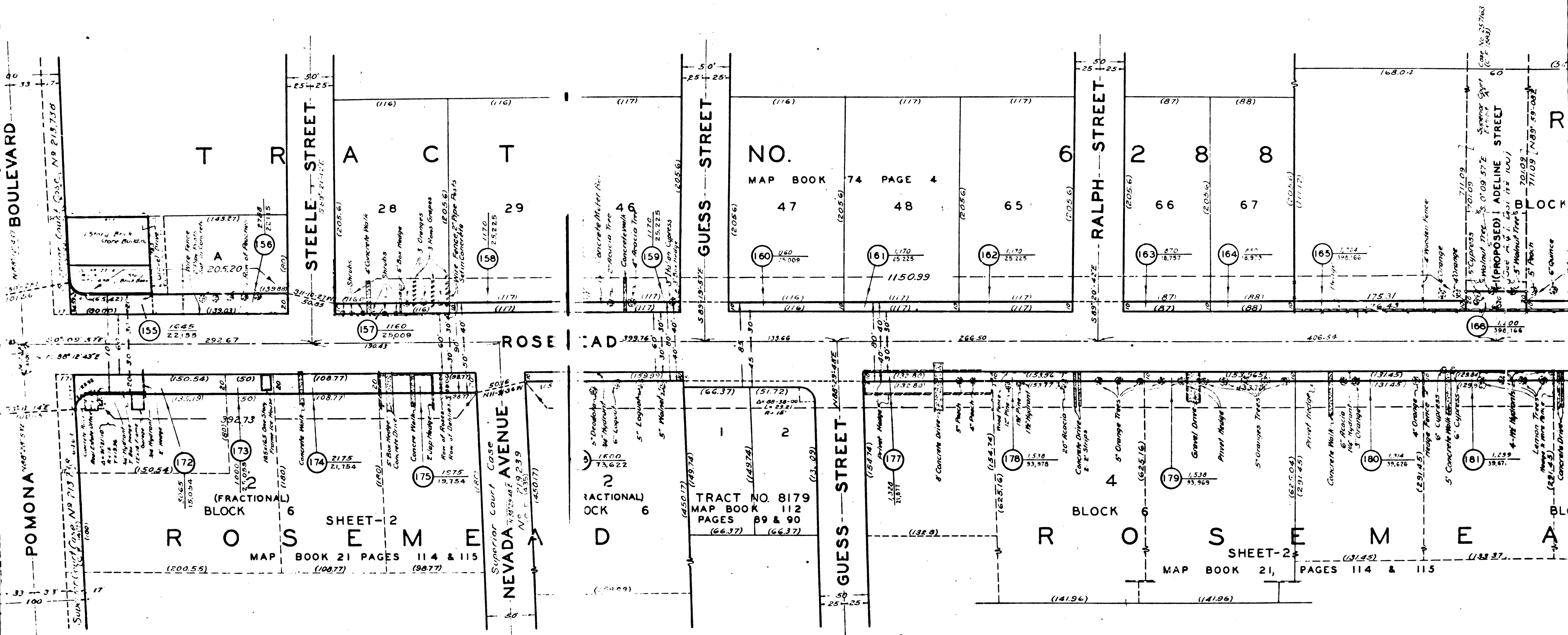
Sht. 44

A. & I. DISTRICT NO. 281			
SHEET NO. 5 OF 11 SHEETS			
DRAWN BY	O.W. FINLEY	OCT. 1928	
TRACKED BY	O.W. FINLEY	OCT. 1928	
CHECKED BY	H.A. JOHNSON	OCT. 1928	
REVISED			
C.S. INDEX MAP NO. 3			

See Sheet No. 6



POMONA BOULEVARD



T R A C T

NO. 47 48 65 66 67 68 68

155 1645 22,155

157 1160 25,009

158 1170 25,225

159 1170 25,225

160 1170 25,225

161 1170 25,225

162 1170 25,225

163 470 18,757

164 470 18,757

165 470 18,757

166 470 18,757

172 15054 15,054

173 15054 15,054

174 2175 21,754

175 1975 19,754

176 1500 73,622

177 15474 31,947

178 1516 33,978

179 1538 33,969

180 1114 34,676

181 1239 39,671

ROSEMEAD BLOCK 6 SHEET-2 MAP BOOK 21 PAGES 114 & 115

TRACT NO. 8179 MAP BOOK 112 PAGES 89 & 90

ROSEMEAD BLOCK 6 SHEET-2 MAP BOOK 21, PAGES 114 & 115

NEVADA AVENUE Superior Court Case No. 719239

GUESS STREET

RALPH STREET

GUESS STREET

STEELE STREET

C.F. 1846

1-2

2

CT

MAP BOOK 20. PAGE 193

N O.

1812

CR ES

5

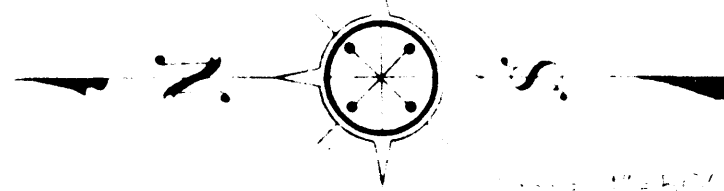
4

2

ROSEMEAD
MAP BOOK 12. PAGE 194-195

BLOCK 7

MISSION



DRIVE

BOULEVARD

44

A. & I. DISTRICT NO. 281	
SHEET NO. 4 OF 11 SHEETS	
DRAWN BY	ALLEN R. ... SEPT. 1929
TRACED BY	... SEPT. 1929
CHECKED BY	... SEPT. 1929
REVISED	
C.S. INDEX MAP NO. 44	

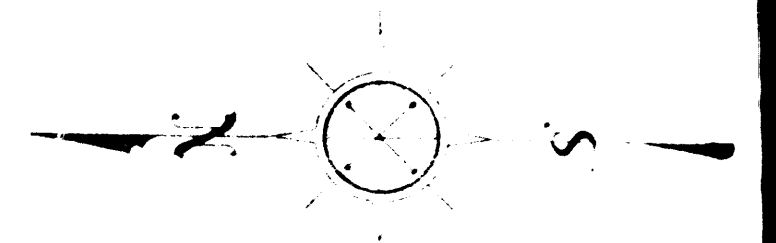
A. & I. DISTRICT NO. 281
ROSEMEAD BOULEVARD
CONDEMNATION MAP
SHEET NO. 4 OF 11 SHEETS

A. & I. DISTRICT NO. 281
ROSEMEAD BOULEVARD
CONDEMNATION MAP
SHEET NO. 4 OF 11 SHEETS

A. & I. DISTRICT NO. 281
ROSEMEAD BOULEVARD
CONDEMNATION MAP
SHEET NO. 5 OF 11 SHEETS

A. & I. DISTRICT NO. 281
ROSEMEAD BOULEVARD
CONDEMNATION MAP
SHEET NO. 5 OF 11 SHEETS

See Sheet No. 4



Scale 1" = 40'

50' 00" 1/2

MISSION

5

C.F. 1846 1-2

PORTION OF
W 1/2 OF NE 1/2
FRACTIONAL SECTION 18
T.15. R.11 W. S.B.1

TRACT

NO.

MAP BOOK 20. PAGE 193

LOWER AZUSA COUNTY ROAD

Walnut Trees 1158.70

143

144

BOULEVARD

E

16

13

12

9

8

5

4

MAP BOOK 37, PAGES 41 - 42

ACRES

ROSE MEAD

MAP BOOK 12. PAGE

2

BLOCK 7

6

C.F. 1846

1-2

PORTION OF
NW 1/4 OF NE 1/4
FRACTIONAL SECTION 18
T.1S. R.11W. S.B.M.

PORTION OF
W 1/2 OF NE 1/2
FRACTIONAL SECTION 18
T.1S. R.11W. S.B.M.

BOULEVARD

RAILROAD
COMPANY

ROSEMEAD

PORTION OF
NE 1/4 OF NW 1/4
FRACTIONAL SECTION 18
T.1S. R.11W. S.B.M.

72

SOUTHERN
PACIFIC
GRAND
AVENUE

ALLEYNE

20

17

16

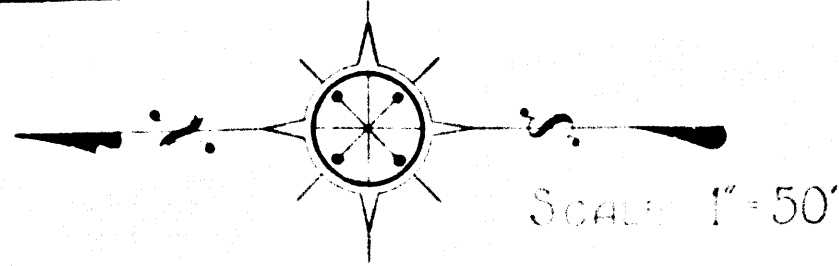
13

12

MAP BOOK 37, PAGES 41 - 42

C.F. 1846 1-2

7



PORTION OF
S.W. 1/4 OF SE 1/4
FRACTIONAL SECTION 7
T.1S. R.11W. S.B.M.

PORTION OF
NW 1/4 OF NE 1/4
FRACTIONAL SECTION 18
T.1S. R.11W. S.B.M.

RAILROAD COMPANY
MAIN LINE TO YUMA

ROSEMEAD

BOULEVARD

PORTION OF
SE 1/4 OF SW 1/4
FRACTIONAL SECTION 7
T.1S. R.11W. S.B.M.

PORTION OF
NE 1/4 OF NW 1/4
FRACTIONAL SECTION 18
T.1S. R.11W. S.B.M.

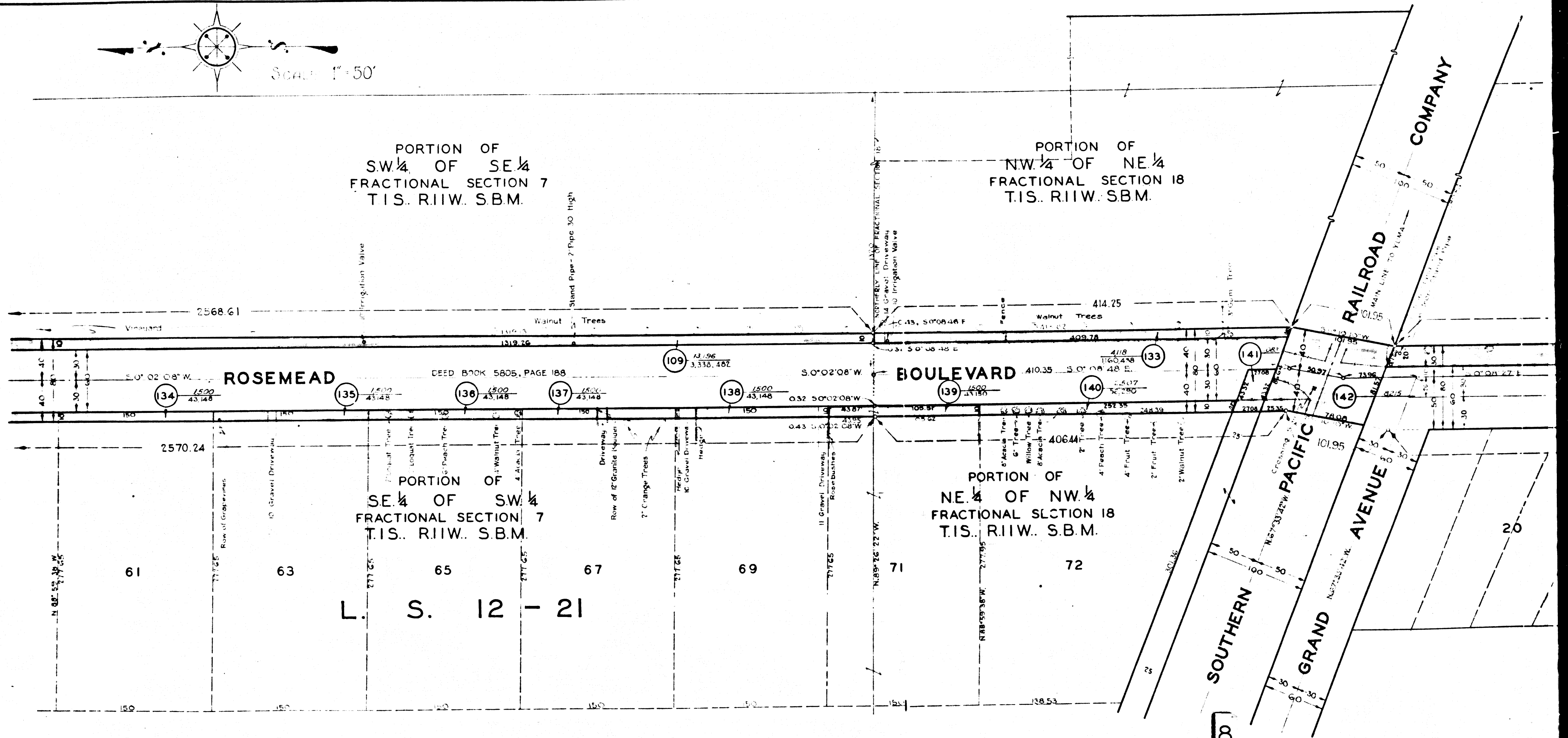
L. S. 12 - 21

SOUTHERN PACIFIC
CROSSING

GRAND AVENUE

C.F. 1846

1-2



TRACT

NO.

MAP BOOK 94, PAGES 99 & 100

TRACT

20

LOMA

PORTION OF N.W. 1/4 OF S.E. 1/4 OF FRACTIONAL SECTION 7 T.I.S. R.II W. S.B.M.

953.57

BOULEVARD

ROSEMEAD

DEED BOOK 5805, PAGE 88

WEDGEWOOD AVENUE

BROADWAY

3 6 2 3

9

8

37

39

41

43

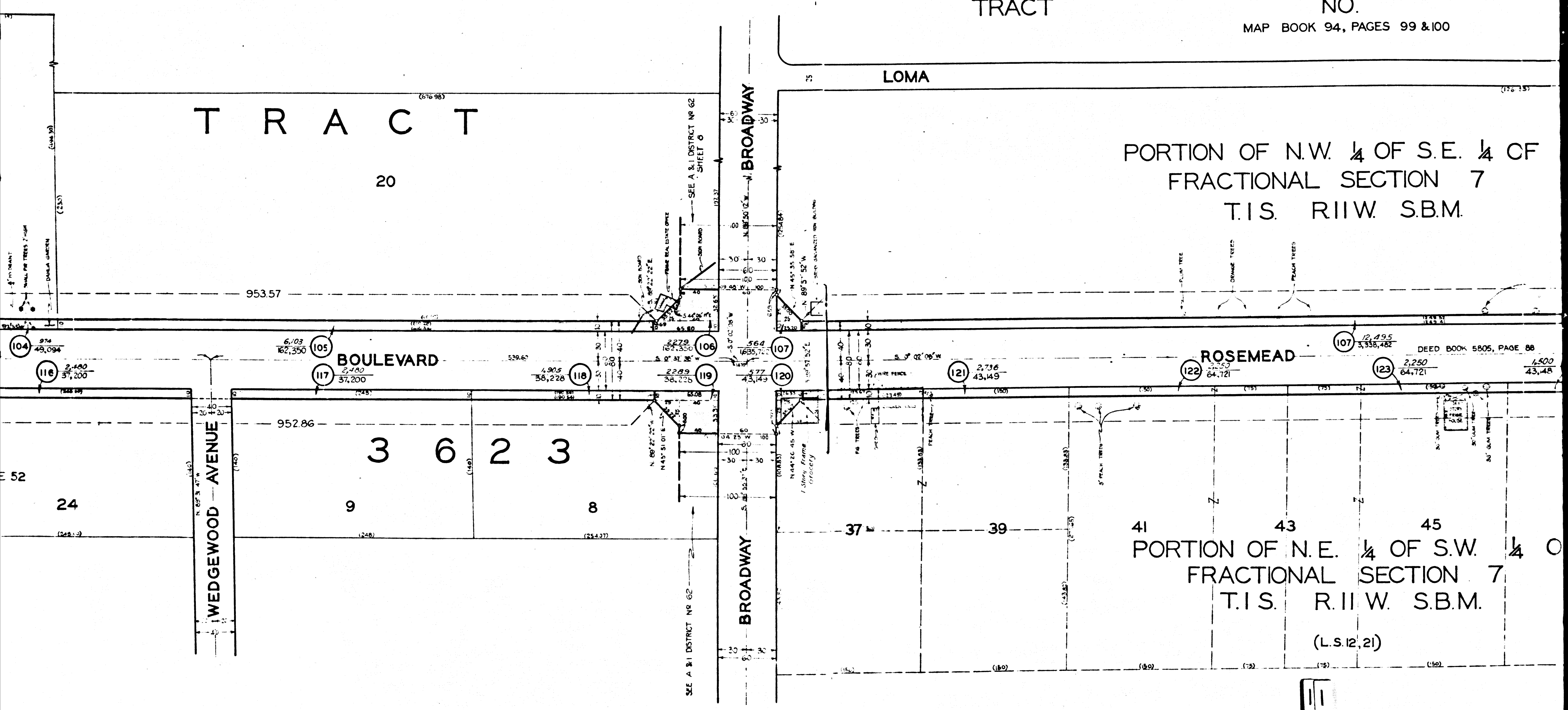
45

PORTION OF N.E. 1/4 OF S.W. 1/4 OF FRACTIONAL SECTION 7 T.I.S. R.II W. S.B.M.

(L.S. 12, 21)

C.F. 1846

1-2



SULTANA

AVENUE

S U N N Y

V I E W

T R A C T

MAP BOOK 13, PAGE 156

20

SUPERIOR COURT CASE NO. 28823
A. & I. DISTRICT NO. A. 1

ELECTRIC
LAS LAS

TUNAS
RAILWAY

DRIVE
COMPANY DRIVE

7
(Fractional)

41
(Fractional)

DRIVE
COMPANY DRIVE

389.83

387.88

387.88

12

40

40

13

25

25

13

24

24

13

9

9

13

3

3

13

6

6

13

2

2

13

3

3

13

6

6

13

2

2

13

3

3

13

6

6

13

2

2

13

3

3

13

6

6

13

2

2

96

97

98

99

100

101A

102

103

104

105

106

107

108

109

110

111

112

113

10

11

12

13

14

15

16

17

18

19

20

21

22

23

24

25

26

27

10

11

12

13

14

15

16

17

18

19

20

21

22

23

24

25

26

27

10

11

12

13

14

15

16

17

18

19

20

21

22

23

24

25

26

27

10

11

12

13

14

15

16

17

18

19

20

21

22

23

24

25

26

27

10

11

12

13

14

15

16

17

18

19

20

21

22

23

24

25

26

27

10

11

12

13

14

15

16

17

18

19

20

21

22

23

24

25

26

27

10

11

12

13

14

15

16

17

18

19

20

21

22

23

24

25

26

27

10

11

12

13

14

15

16

17

18

19

20

21

22

23

24

25

26

27

10

11

12

13

14

15

16

17

18

19

20

21

22

23

24

25

26

27

10

11

12

13

14

15

16

17

18

19

20

21

22

23

24

25

26

27

C.F. 1846 1-2

12

357.96

357.96

357.96

357.96

357.96

357.96

357.96

357.96

357.96

357.96

357.96

357.96

357.96

357.96

357.96

357.96

357.96

357.96

357.96

357.96

357.96

357.96

357.96

357.96

357.96

357.96

357.96

357.96

357.96

357.96

357.96

357.96

357.96

357.96

357.96

357.96

357.96

357.96

357.96

357.96

357.96

357.96

357.96

357.96

357.96

357.96

357.96

357.96

357.96

357.96

357.96

357.96

357.96

357.96

357.96

357.96

357.96

357.96

357.96

357.96

357.96

357.96

357.96

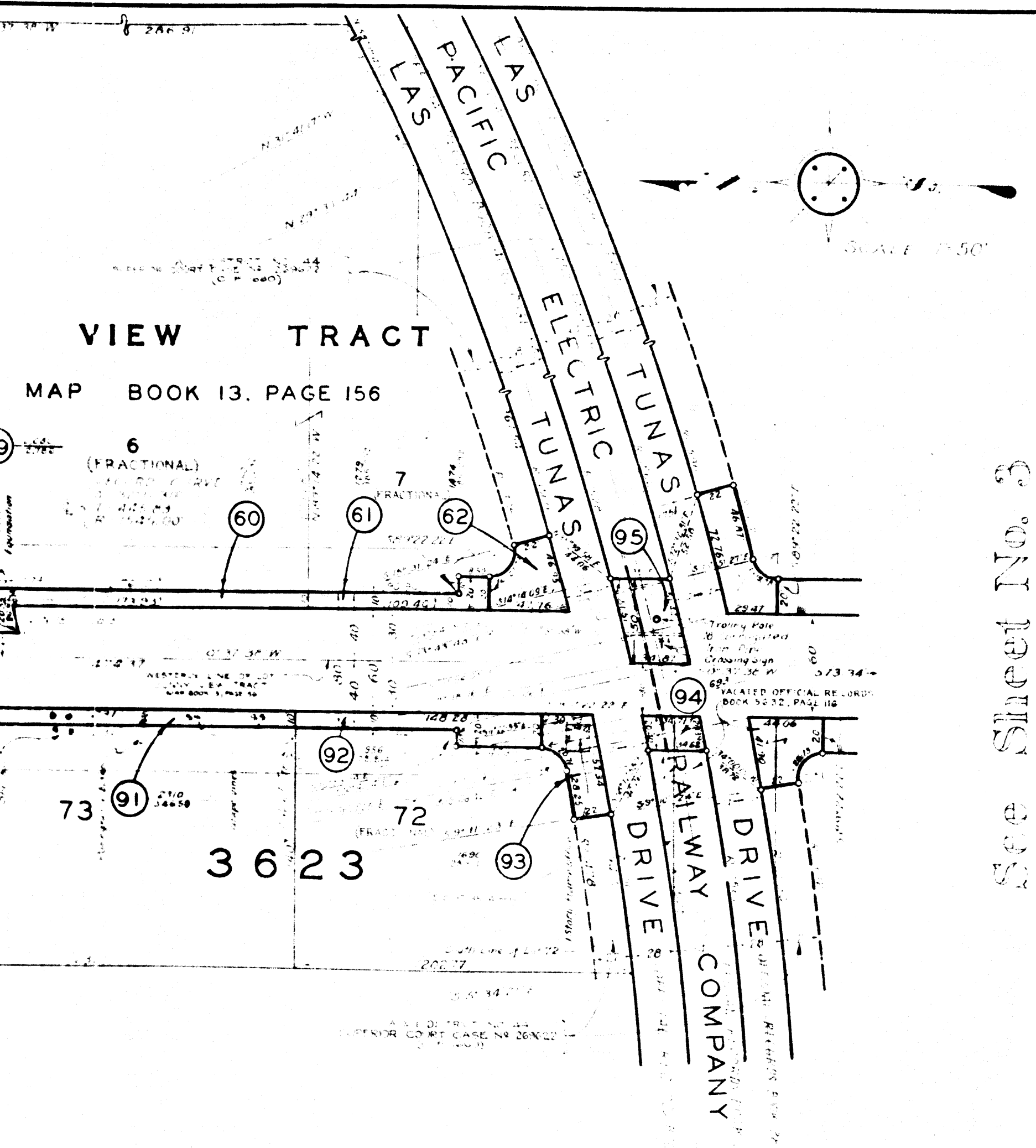
357.96

357.96

357.96

357.96

357.96



A. & I. DISTRICT NO. 281		
SHEET NO. 2 OF 11 SHEETS		
DRAWN BY	OWEN, E. J.	SEPT. 1929
TRACED BY	H. W. WOODLEY	OCT. 1929
CHECKED BY	H. W. WOODLEY	OCT. 1929
REVISED		
H. W. W. 412 40		
C. S. INDEX MAP NO. 44		

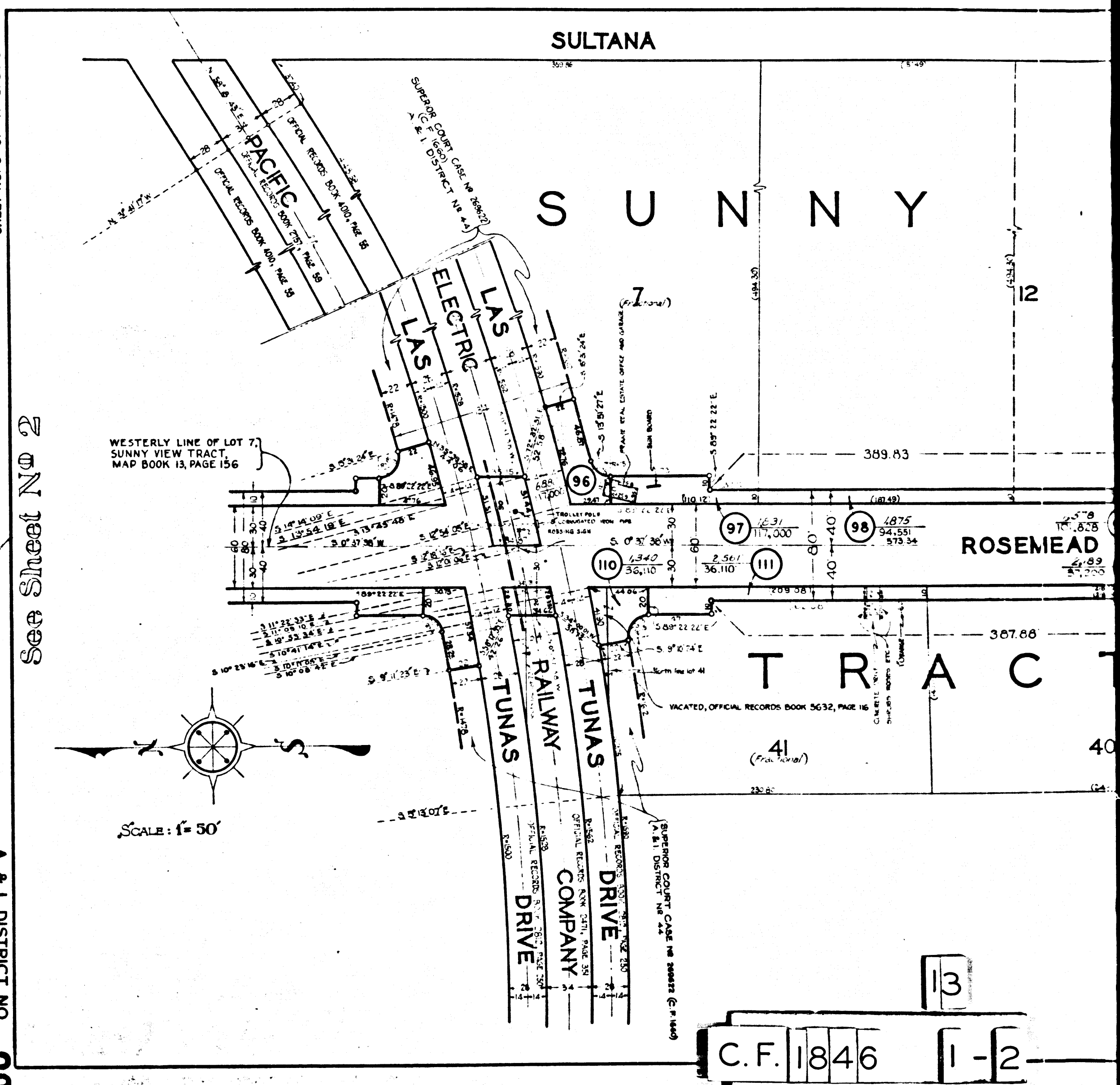
A. & I. DISTRICT NO. 281
ROSEMEAD BOULEVARD
CONDEMNATION MAP
SHEET NO. 2 OF 11 SHEETS

See Sheet No. 3

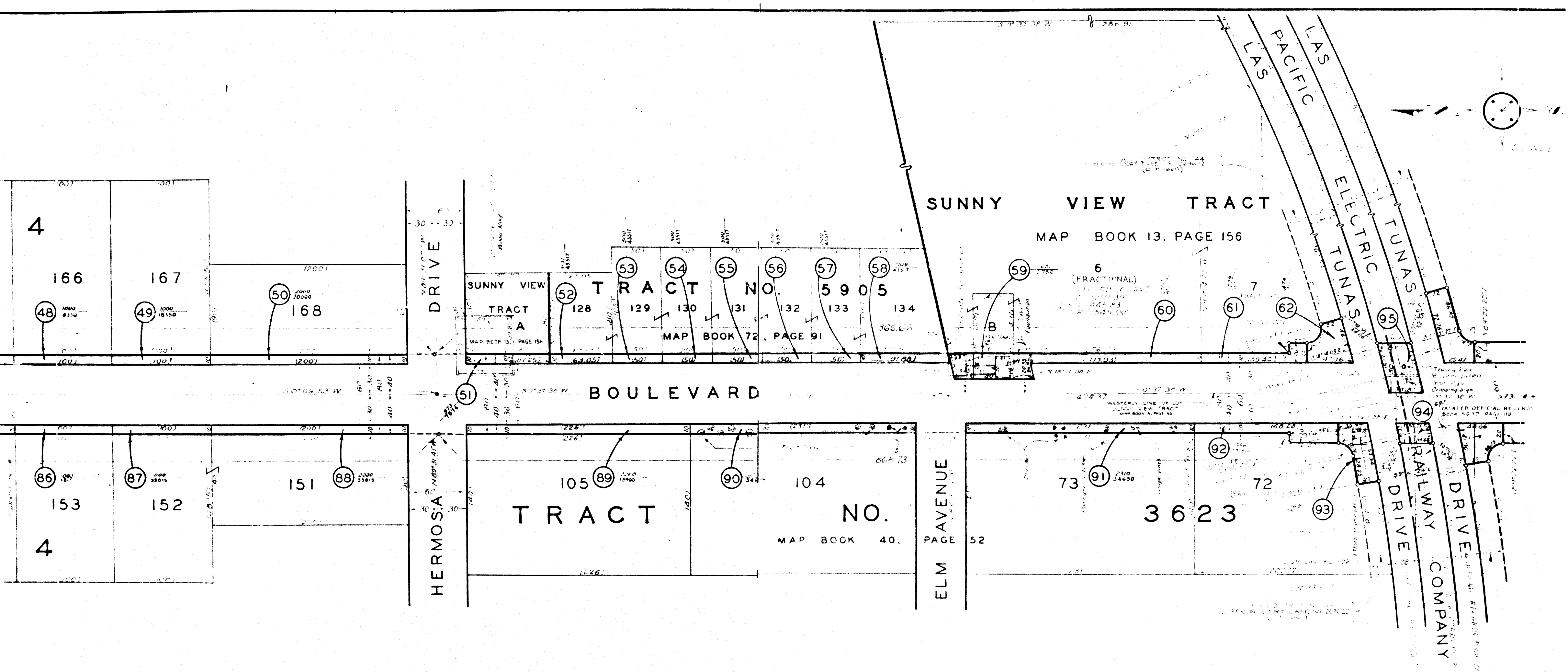
A. & I. DISTRICT NO. 281
ROSEMEAD BOULEVARD
CONDEMNATION MAP
SHEET NO. 2 OF 11 SHEETS

A. & I. DISTRICT NO. 281
ROSEMEAD BOULEVARD
CONDEMNATION MAP
SHEET NO. 3 OF 11 SHEETS

A. & I. DISTRICT NO. 281
ROSEMEAD BOULEVARD
CONDEMNATION MAP
SHEET NO. 3 OF 11 SHEETS



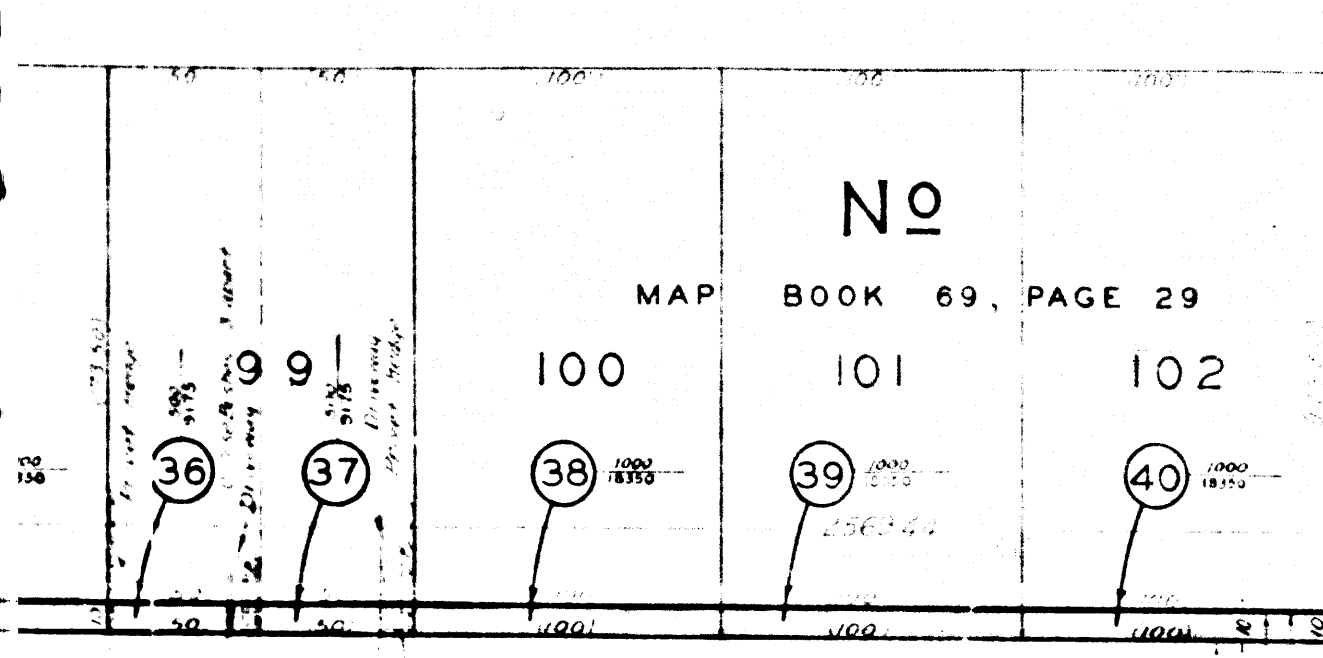
C.F. 1846 1-2



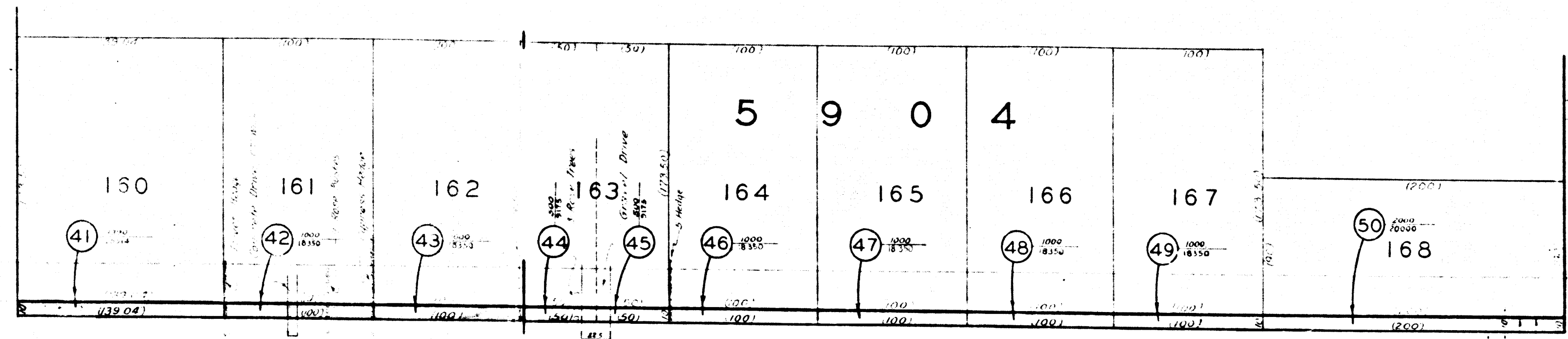
14

C.F. 1846 1-2

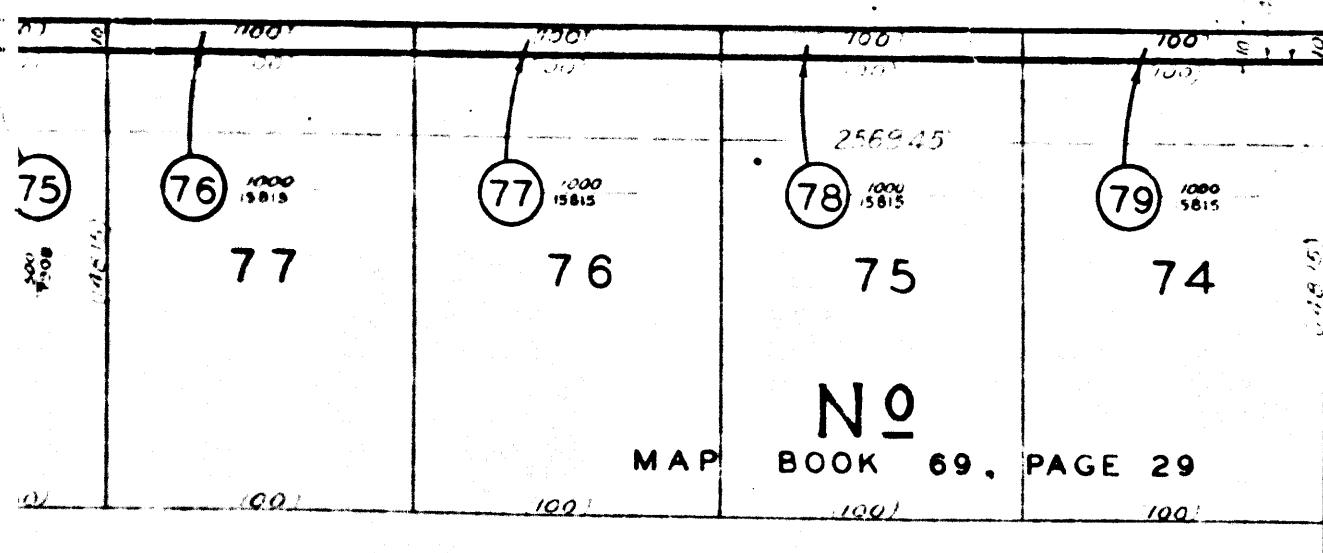
A & I DISTRICT	
SHEET NO. 2 OF	
DRAWN BY	MMW
TRACED BY	MMW
CHECKED BY	MMW
REVISED BY	
DATE	
CS INDEX MAP NO.	



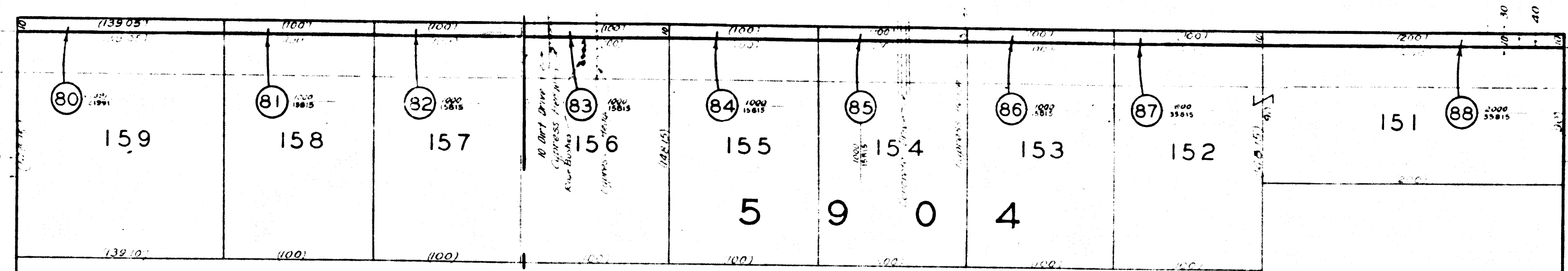
AVENUE



DRIVE

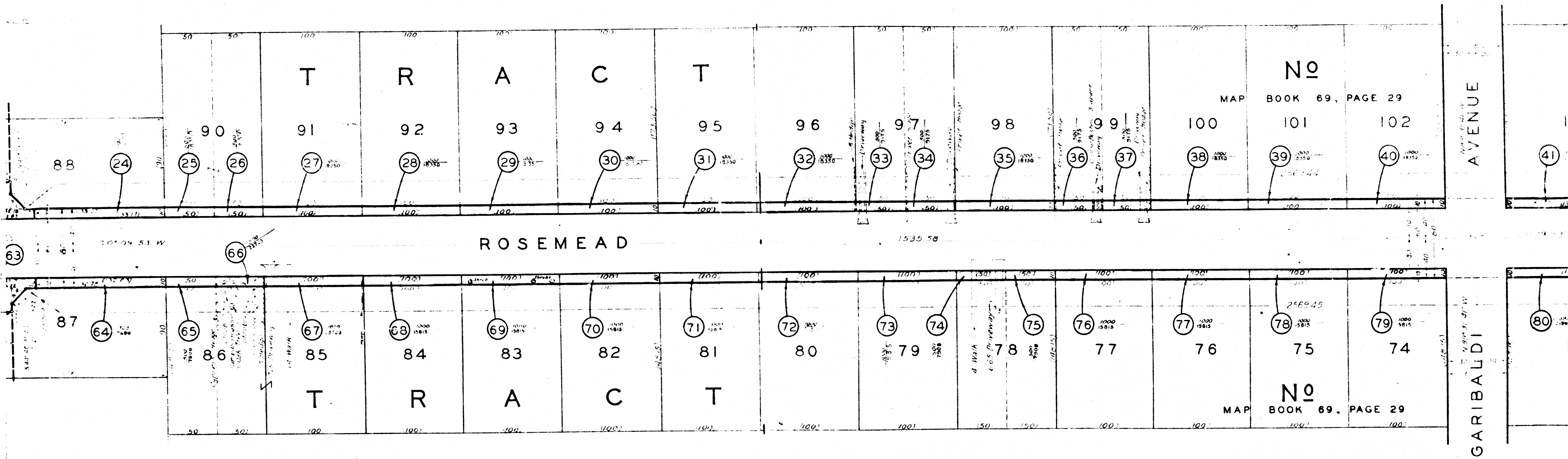


GARIBALDI



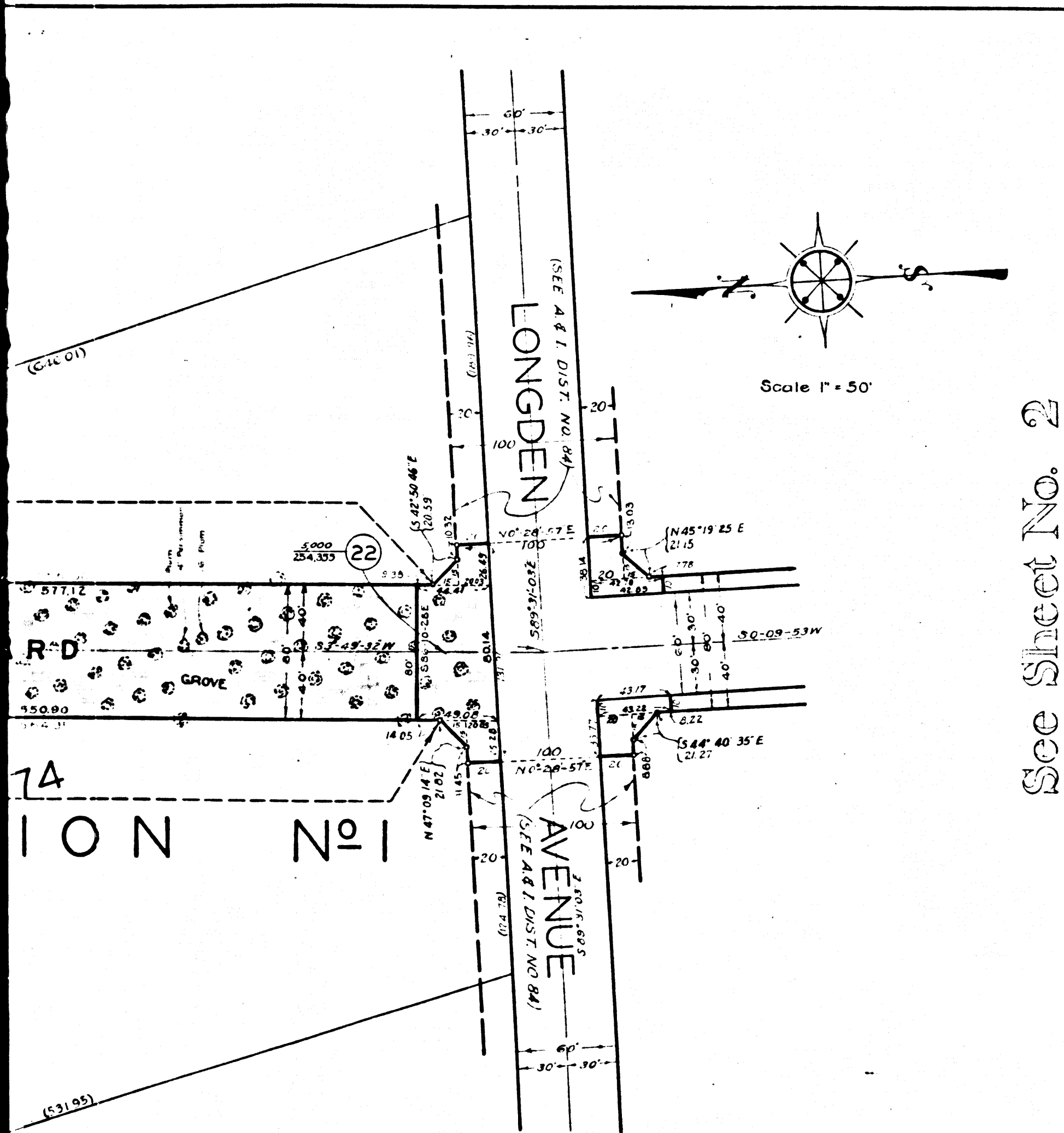
HERMOSA DRIVE

15
C.F. 1846 1-2



16

C.F. 1846 1-2

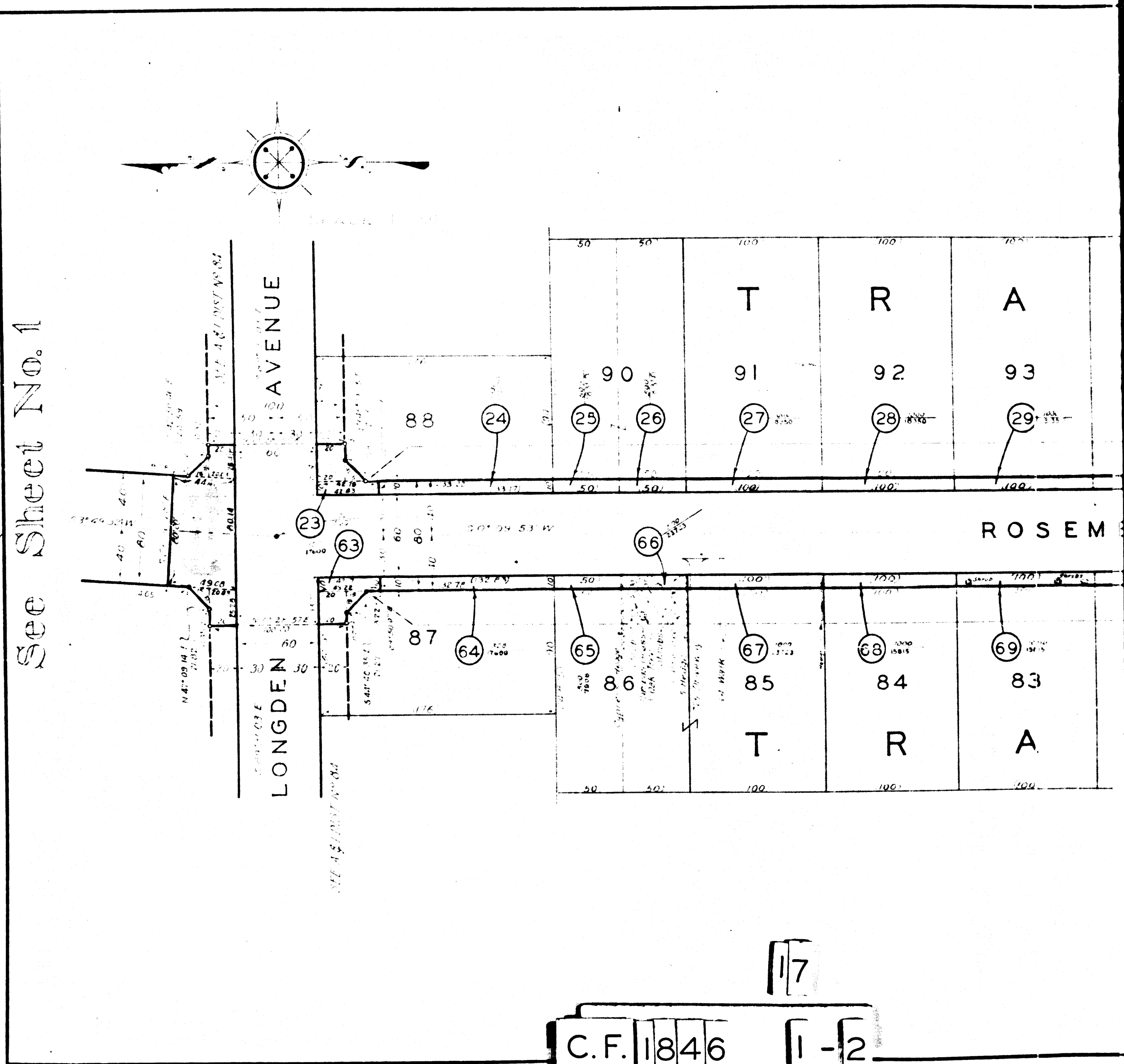


See Sheet No. 2

A. & I. DISTRICT NO. 281	
SHEET NO. 1 OF 11 SHEETS	
DRAWN BY	H. JOHNSON SEPT. 1922
TRACED BY	O. W. FINLEY OCT. 1922
CHECKED BY	O. W. FINLEY OCT. 1922
REVISED	
R.H.W.	JUN 30
C.S. INDEX MAP NO. 44	

A. & I. DISTRICT NO. 1821
ROSEMEAD BOULEVARD
CONDEMNATION MAP

A. & I. DISTRICT NO. 281
ROSEMEAD BOULEVARD
CONDEMNATION MAP
SHEET NO. 1 OF 11 SHEETS



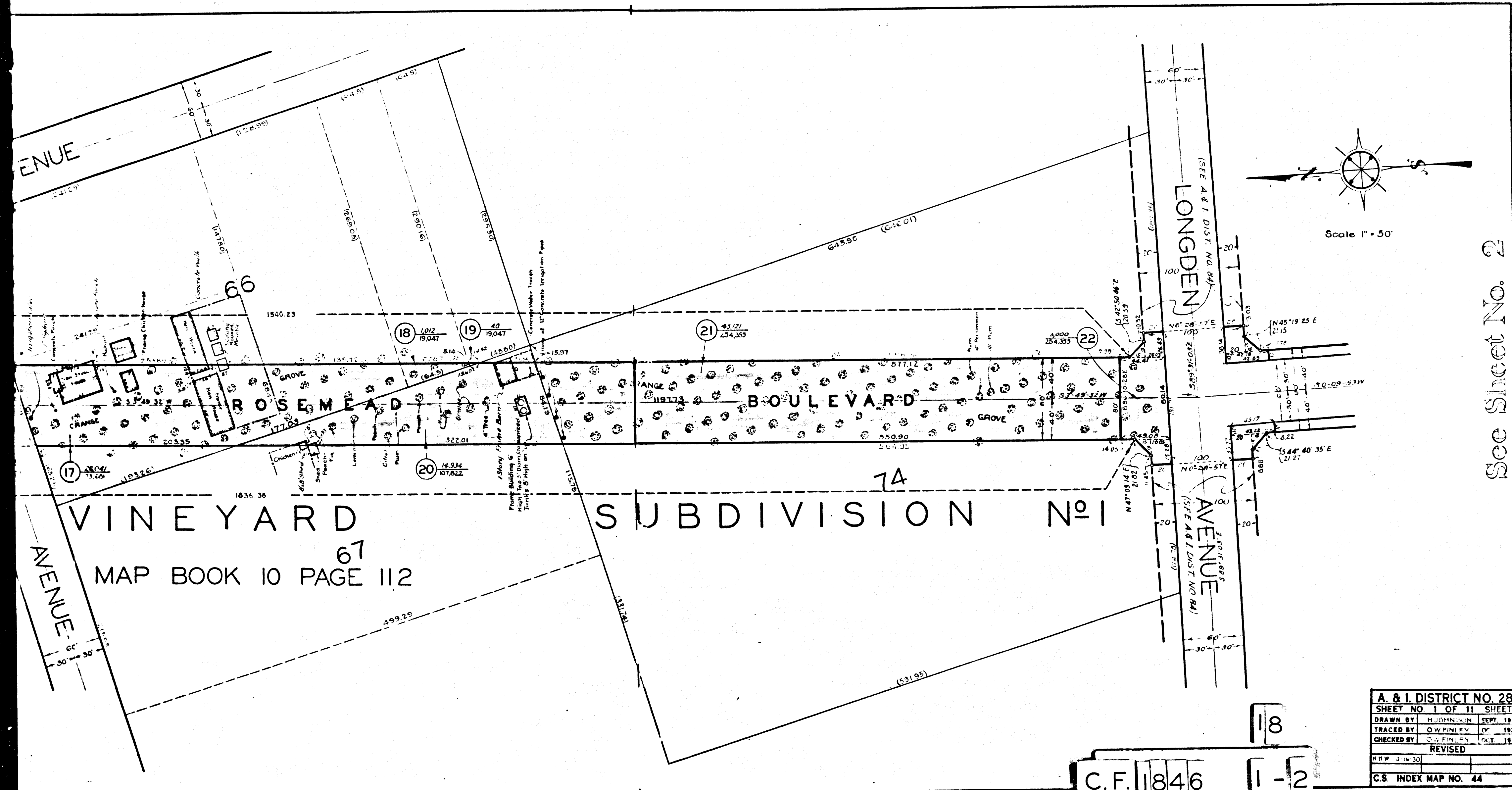
See Sheet No. 1

A. & I. DISTRICT NO. 281
ROSEMEAD BOULEVARD
CONDEMNATION MAP
SHEET NO. 2 OF 11 SHEETS

A. & I. DISTRICT NO. 281
ROSEMEAD BOULEVARD
CONDEMNATION MAP
SHEET NO. 2 OF 11 SHEETS

C.F. 1846 1-2

17



MAP BOOK 10 PAGE 112

See Sheet No. 2

C.F. 1846 1-2

A. & I. DISTRICT NO. 281	
SHEET NO. 1 OF 11 SHEETS	
DRAWN BY	H. JOHNSON SEPT. 1929
TRACED BY	O. W. FINLEY OCT. 1929
CHECKED BY	O. W. FINLEY OCT. 1929
REVISED	
R.H.W.	1-19-30
C.S. INDEX MAP NO. 44	

A. & I. DISTRICT NO. 281
ROSEMEAD BOULEVARD
CONDEMNATION MAP

A. & I. DISTRICT NO. 281
ROSEMEAD BOULEVARD
CONDEMNATION MAP
SHEET NO. 1 OF 11 SHEETS

A. & I. DISTRICT NO. 281
ROSEMEAD BOULEVARD
CONDEMNATION MAP

CONDEMNATION MAP
SHEET NO. 2 OF 11 SHEETS

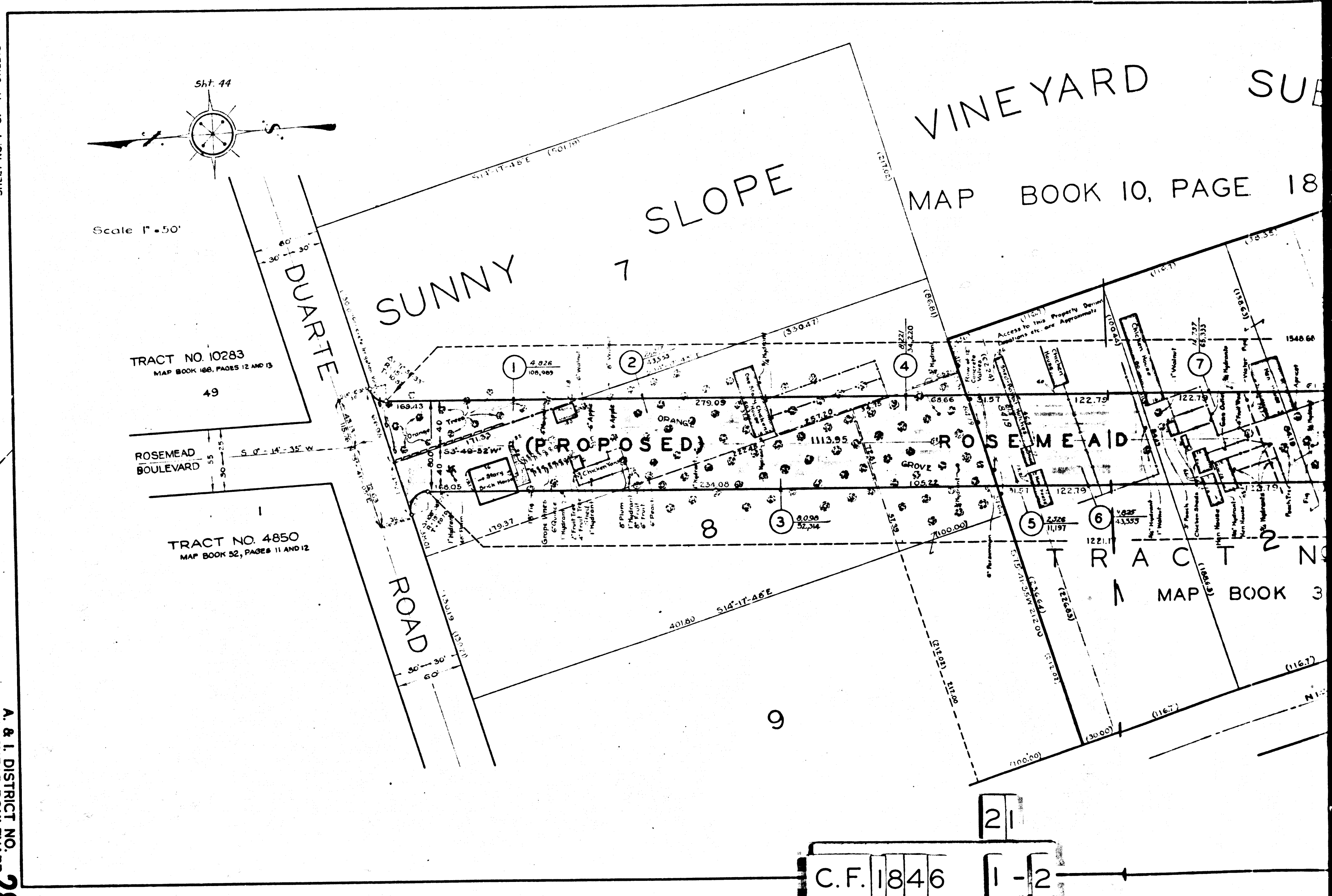
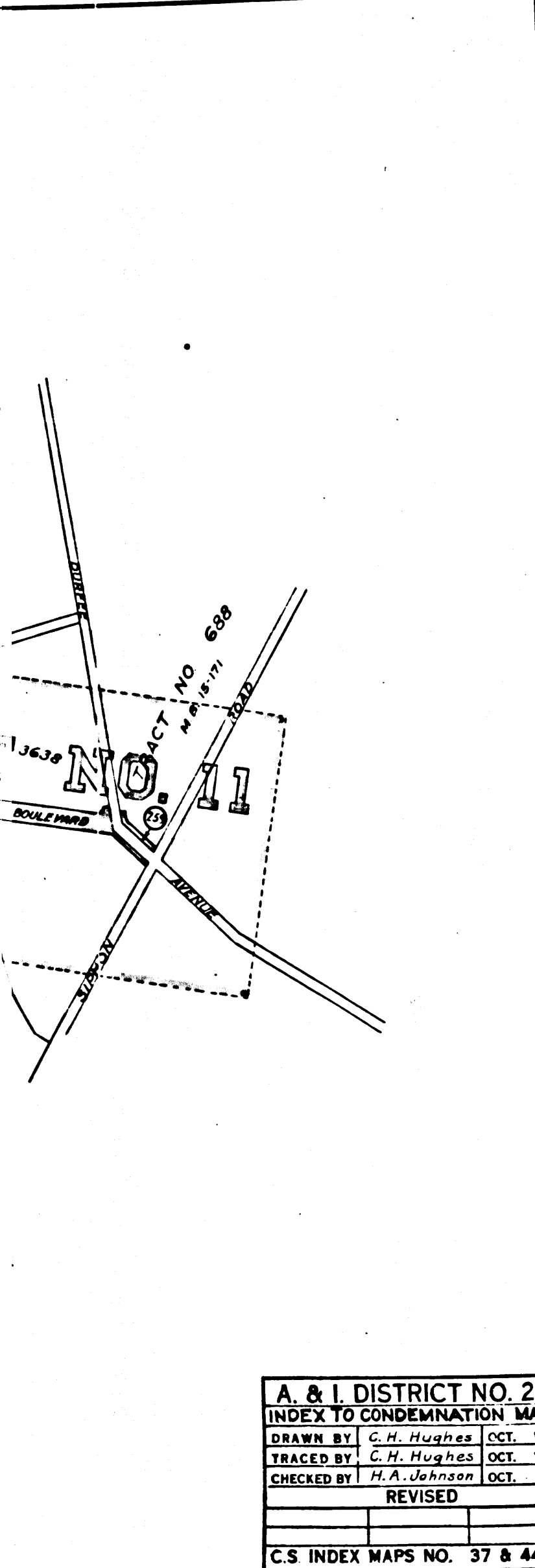
SHEET NO. 1 OF 1 SHEET
 INDEX TO CONDEMNATION MAPS
 ROSEMEAD BOULEVARD
 A & I DISTRICT NO. 281

A. & I. DISTRICT NO. 182
 ROSEMEAD BOULEVARD
 CONDEMNATION MAP
 SHEET NO. 1 OF 11 SHEETS

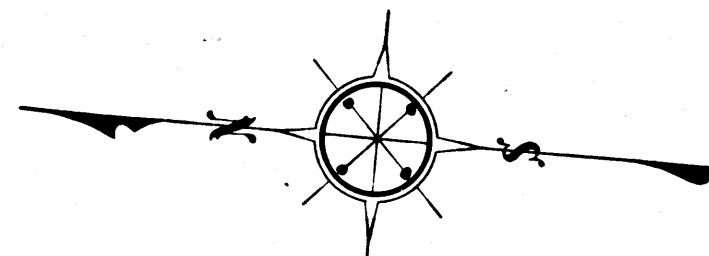
SHEET NO. 1 OF 1 SHEET
 INDEX TO CONDEMNATION MAPS
 ROSEMEAD BOULEVARD
 A & I DISTRICT NO. 281

A. & I. DISTRICT NO. 281
 ROSEMEAD BOULEVARD
 CONDEMNATION MAP
 SHEET NO. 1 OF 11 SHEETS

A. & I. DISTRICT NO. 281	
INDEX TO CONDEMNATION MAP	
DRAWN BY	C. H. Hughes OCT. 1929
TRACED BY	C. H. Hughes OCT. 1929
CHECKED BY	H. A. Johnson OCT. 1929
REVISED	
C.S. INDEX MAPS NO. 37 & 44	

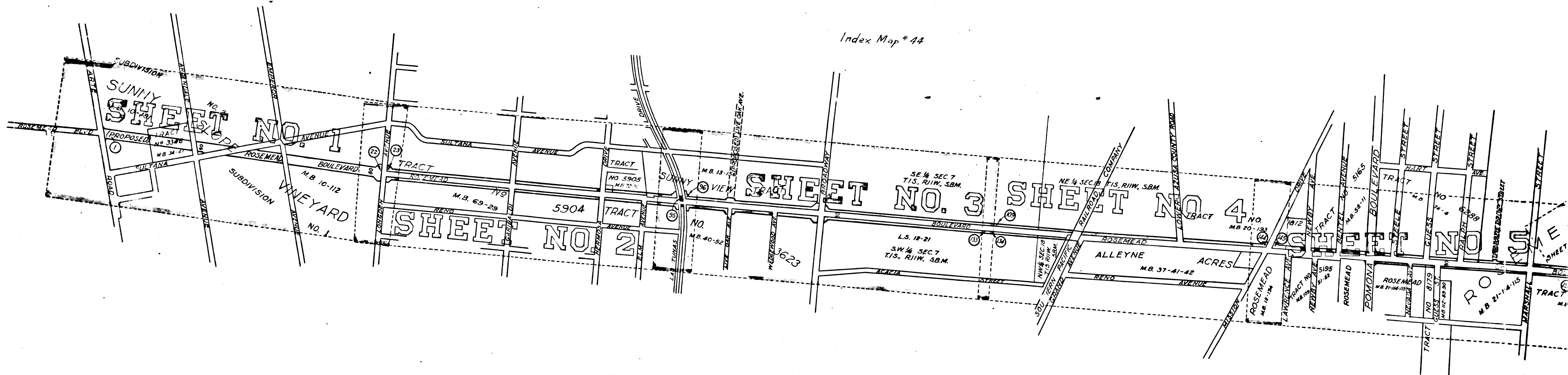


C.F. 1846 1-2



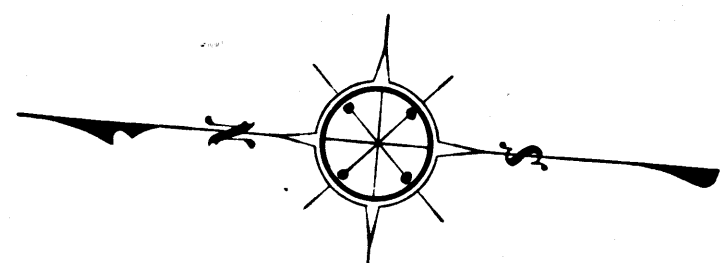
SCALE 1" = 600'

Index Map # 44



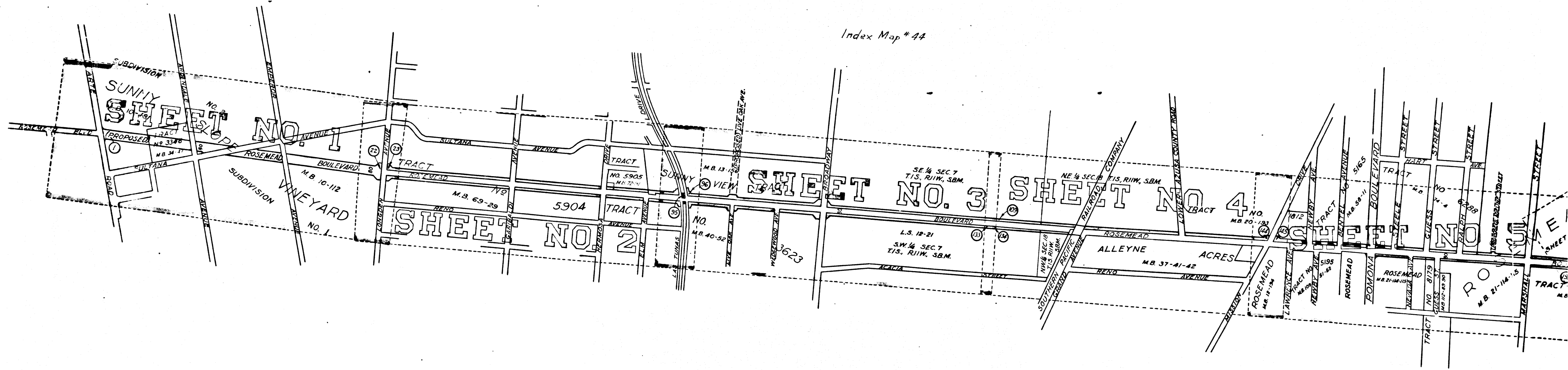
24

C.F. 1846 1-2



SCALE 1" = 600'

Index Map # 44



25

C.F. 1846 1-2