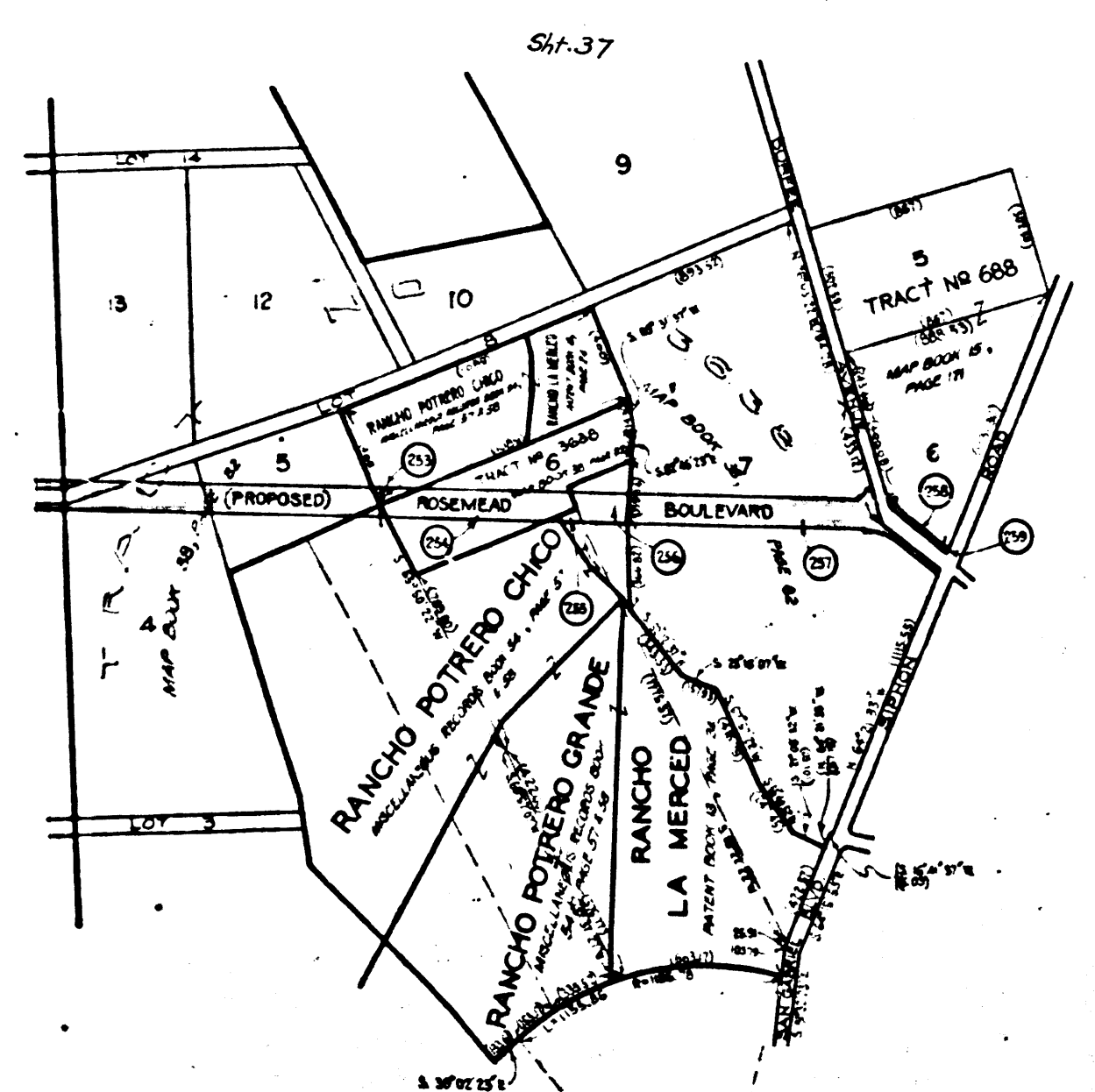


SCALE: 1" = 50'



MARGINAL MAP
NO SCALE

AVENUE

Shts. 37 - 44
Superior Court Case No. 312479
Suit for Condemnation
Filed Dec. 9th 1930
County of Los Angeles, Pltff.
Vs
June Achenbach et al., Def.
Proceedings abandoned Nov. 10, 1931.

EXHIBIT "A"
ACQUISITION AND IMPROVEMENT DISTRICT NO. 281
OF THE COUNTY OF LOS ANGELES
FOR
THE OPENING, WIDENING AND EXTENDING OF
ROSEMEAD BOULEVARD
AND LIVE OAK AVENUE,
THE OPENING OF
ADELINE STREET,
AND
THE WIDENING OF
LONGDEN AVENUE, LAS TUNAS DRIVE, BROADWAY,
GARVEY AVENUE, FAWCETT AVENUE,
AND DURFEE AVENUE

MAP SHOWING PROPERTY TO BE ACQUIRED, IN ACCORDANCE WITH THE PROVISIONS OF THE ACQUISITION AND IMPROVEMENT ACT OF 1925. APPROVED MAY 23, 1925. COMMONLY KNOWN AS THE "MATTOON ACT."
SCALE: 1" = 50'
APRIL, 1930.
J. E. ROCKHOLD — COUNTY SURVEYOR

SUBMITTED: *Alfred Jones*
ALFRED JONES
CHIEF SURVEYOR

APPROVED: *J. E. Rockhold*
J. E. ROCKHOLD
COUNTY SURVEYOR

APPROVED AS TO FORM:
EVERETT W. MATTOON, COUNTY COUNSEL

W. W. Cunningham
W. W. CUNNINGHAM
DEPUTY COUNTY COUNSEL

LEGEND

PORTION COLORED RED SHOWS LOCATION, GENERAL ROUTE AND TERMIN. OF LAND IN WHICH AN EASEMENT FOR PUBLIC HIGHWAY PURPOSES IS SOUGHT TO BE ACQUIRED.
NUMBERS IN CIRCLES INDICATE PARCELS SOUGHT TO BE CONDEMNED.
FIGURES SHOWN IN PARENTHESES () ARE EITHER RECORD DISTANCES OR ARE CALCULATED FROM RECORD DISTANCES.
FIGURES SHOWN THUS:
 $\frac{0,000}{00,000}$ INDICATE AREA TO BE ACQUIRED, IN SQUARE FEET.
INDICATE AREA OF HOLDING, INCLUDING AREA TO BE ACQUIRED, IN SQUARE FEET.

NOTE: PARCELS 207 & 208 HAVE BEEN OMITTED.

Negative (Rectigraph) of this map filed in Blue Print Dept. as Negative No. 215 (11 Shts. + Index)

A. & I. DISTRICT NO. 281	
SHEET NO. 11 OF 11 SHEETS	
DRAWN BY	F. T. HUBBERT OCT. 1929
TRACED BY	W. W. CUNNINGHAM OCT. 1929
CHECKED BY	W. W. CUNNINGHAM OCT. 1929
REVISED	
C.S. INDEX MAP NO. 37	

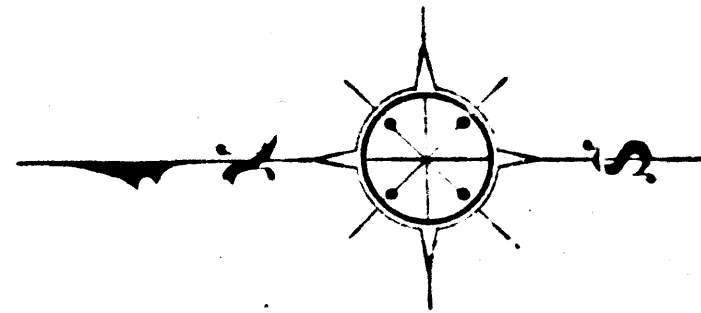
C.F. 1846 2-2

A. & I. DISTRICT NO. 281
CONDEMNATION MAP
SHEET NO. 11 OF 11 SHEETS

VEMCO
REPRODUCED

956

101



SCALE: 1" = 50'

TRACT NO. 688
MAP BOOK 15, PAGE 171

DURFEE AVENUE

BOULEVARD

ROAD

DURFEE

SIPHON

AVENUE

931.98
90,048
1,902,265
257

1041.80

979.20

8

3

6

7

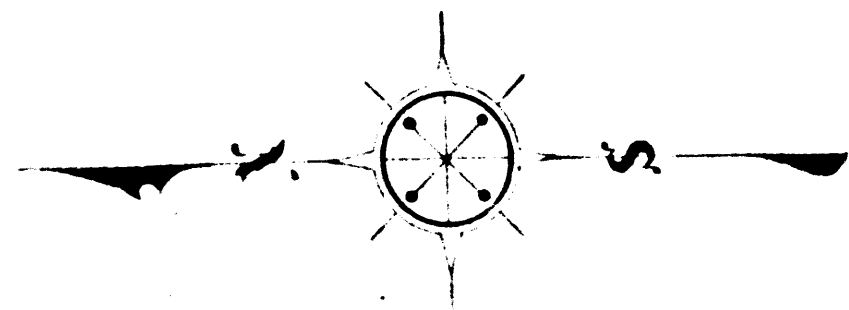
3

C.F. 1846 2-2

2

82

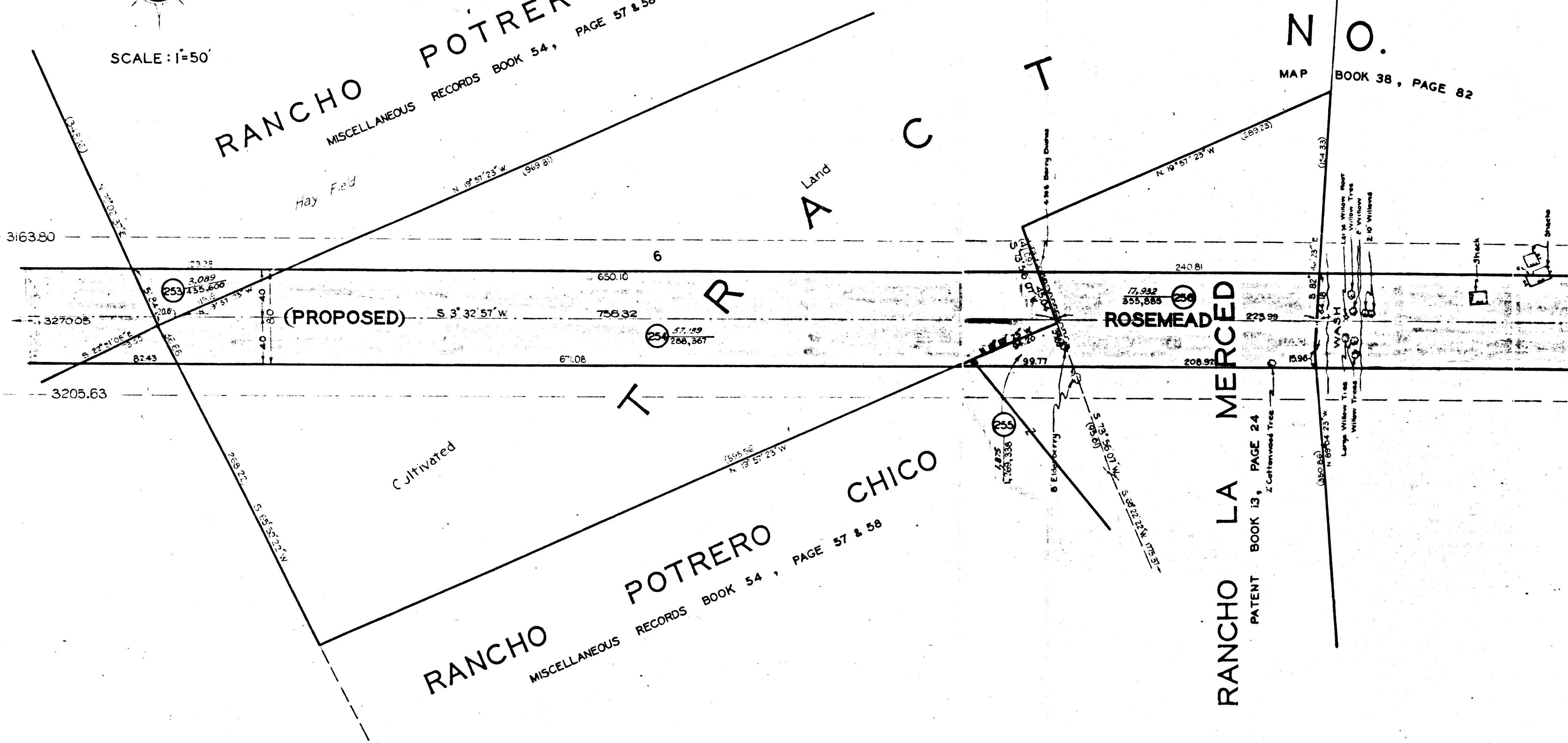
TRA
MAP BOOK 15



SCALE: 1"=50'

RANCHO POTRERO CHICO
MISCELLANEOUS RECORDS BOOK 54, PAGE 57 & 58

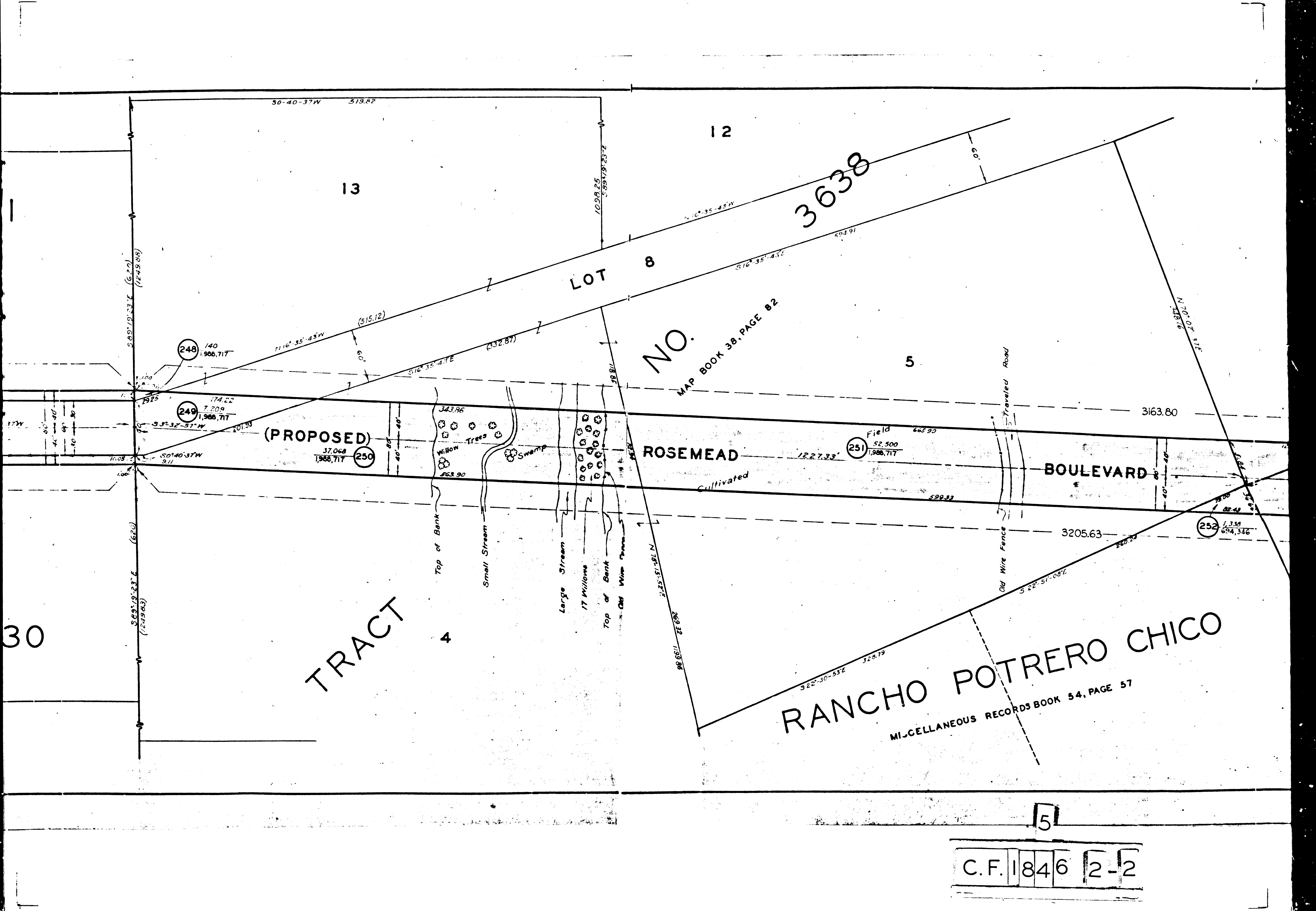
N O.
MAP BOOK 38, PAGE 82



RANCHO POTRERO CHICO
MISCELLANEOUS RECORDS BOOK 54, PAGE 57 & 58

RANCHO LA MERCED
PATENT BOOK 13, PAGE 24

3
C.F. 1846 2-2



13

12

LOT 8

3638

NO.

MAP BOOK 38, PAGE 82

5

(PROPOSED)

ROSEMEAD

BOULEVARD

TRACT 4

RANCHO POTRERO CHICO
MISCELLANEOUS RECORDS BOOK 54, PAGE 57

(248) 140
1,966,717

(249) 174.22
7,209
1,966,717

(250) 37,068
1,966,717

(251) Field 665.90
52,500
1,966,717

(252) 1,330
694,346

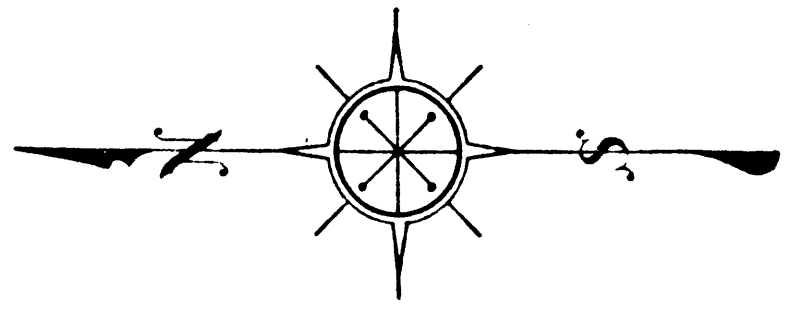
5

C.F. 1846 2-2

TRACT

NO.

621



SCALE 1" = 50'

MAP BOOK 15, PAGES 182 AND 183

115

116

FAWCETT AVENUE

ROSEMEAD

BOULEVARD

TRACT

NO.

830

MAP BOOK 16, PAGE 117

65

74

Vegetable Garden

Hay Field

Row of Apple Trees

Hay Field

3 Strand Wire Fence

Wooden Water Trough

242

245

243

246

244

247

1,423
396,900

1,423
396,900

5,850
396,900

5,850
396,900

6,600
415,800

6,600
415,800

100
50
50

100
50°-40'-37"W

50°-40'-37"W

50°-40'-37"W

100
50
50

(630)

50°-40'-37"W

(660)

(620)

1246.23

1320.23'

1244.23

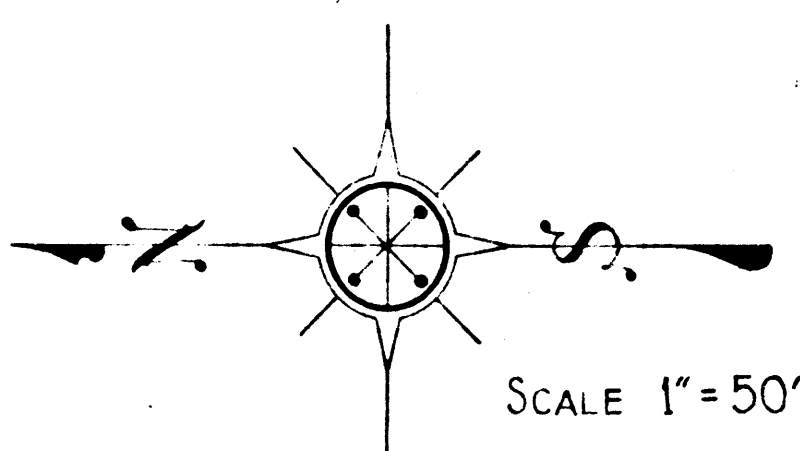
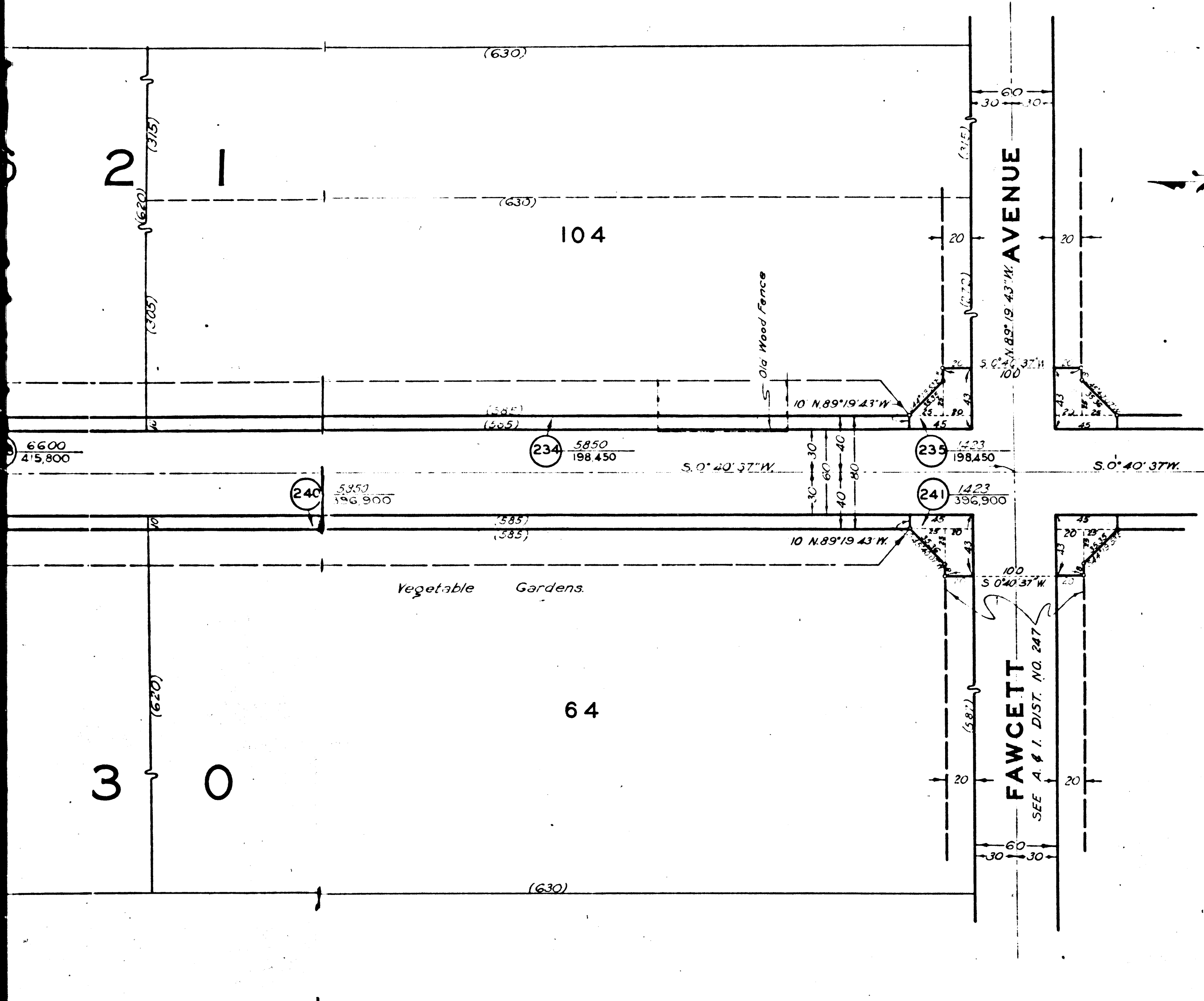
(620)

50°-40'-37"W

(660)

6

C.F. 1846 2-2



A. & I. DISTRICT NO. 281	
SHEET NO. 9 OF 11 SHEETS	
DRAWN BY	O.W. FINLEY OCT. 1929
TRACED BY	C.H. HUGHES OCT. 1929
CHECKED BY	E.T. HUBBERT OCT. 1929
REVISED	
C.S. INDEX MAP NO. 37	

See Sheet No. 10

A. & I. DISTRICT NO. 281
ROSEMEAD BOULEVARD
CONDEMNATION MAP
SHEET NO. 9 OF 11 SHEETS

A. & I. DISTRICT NO. 281
ROSEMEAD BOULEVARD
CONDEMNATION MAP
SHEET NO. 9 OF 11 SHEETS

A. & I. DISTRICT NO. 281
ROSEMEAD BOULEVARD
CONDEMNATION MAP
SHEET NO. 10 OF 11 SHEETS

A. & I. DISTRICT NO. 281
ROSEMEAD BOULEVARD
CONDEMNATION MAP
SHEET NO. 10 OF 11 SHEETS

See Sheet No. 9

C.F. 1846 2-2

7

(660)

(660)

N O.

6

2

89

103

MAP BOOK 15, PAGES 182 - 183

Vegetable Gardens

7789.77

(660)
(660)

(660)
(660)

3960.72

BOULEVARD

(238) $\frac{6600}{1247.400}$

(232) $\frac{6600}{831.600}$

(239) $\frac{6600}{415.800}$

(233) $\frac{6600}{415.800}$

(660)
(660)

(660)
(660)

7789.77

Vegetable Gardens

MAP BOOK 16, PAGE 117

54

55

N O.

8

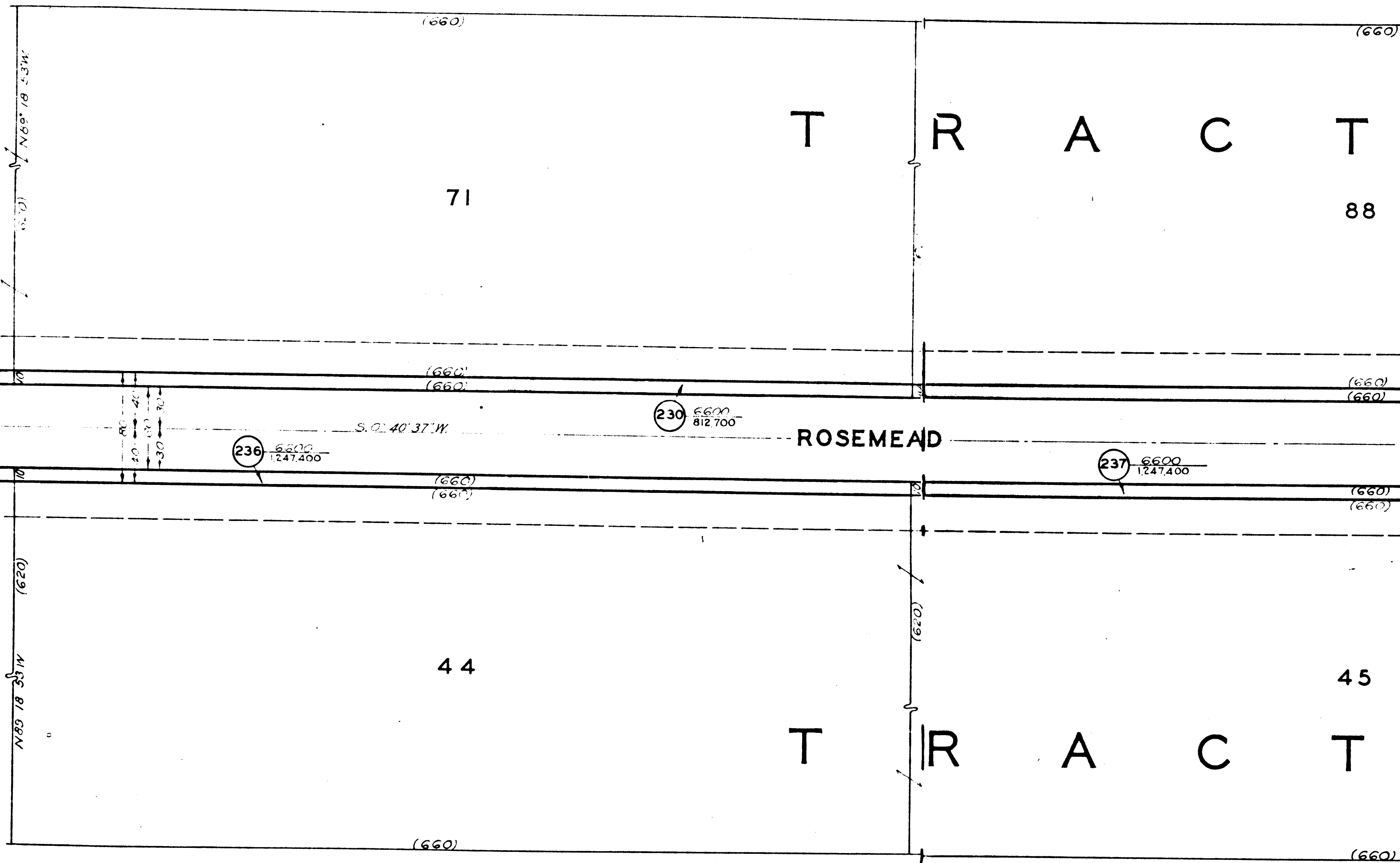
3

(660)

(660)

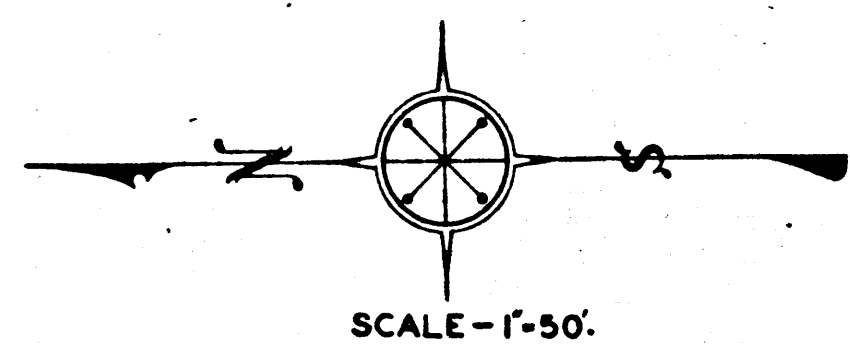
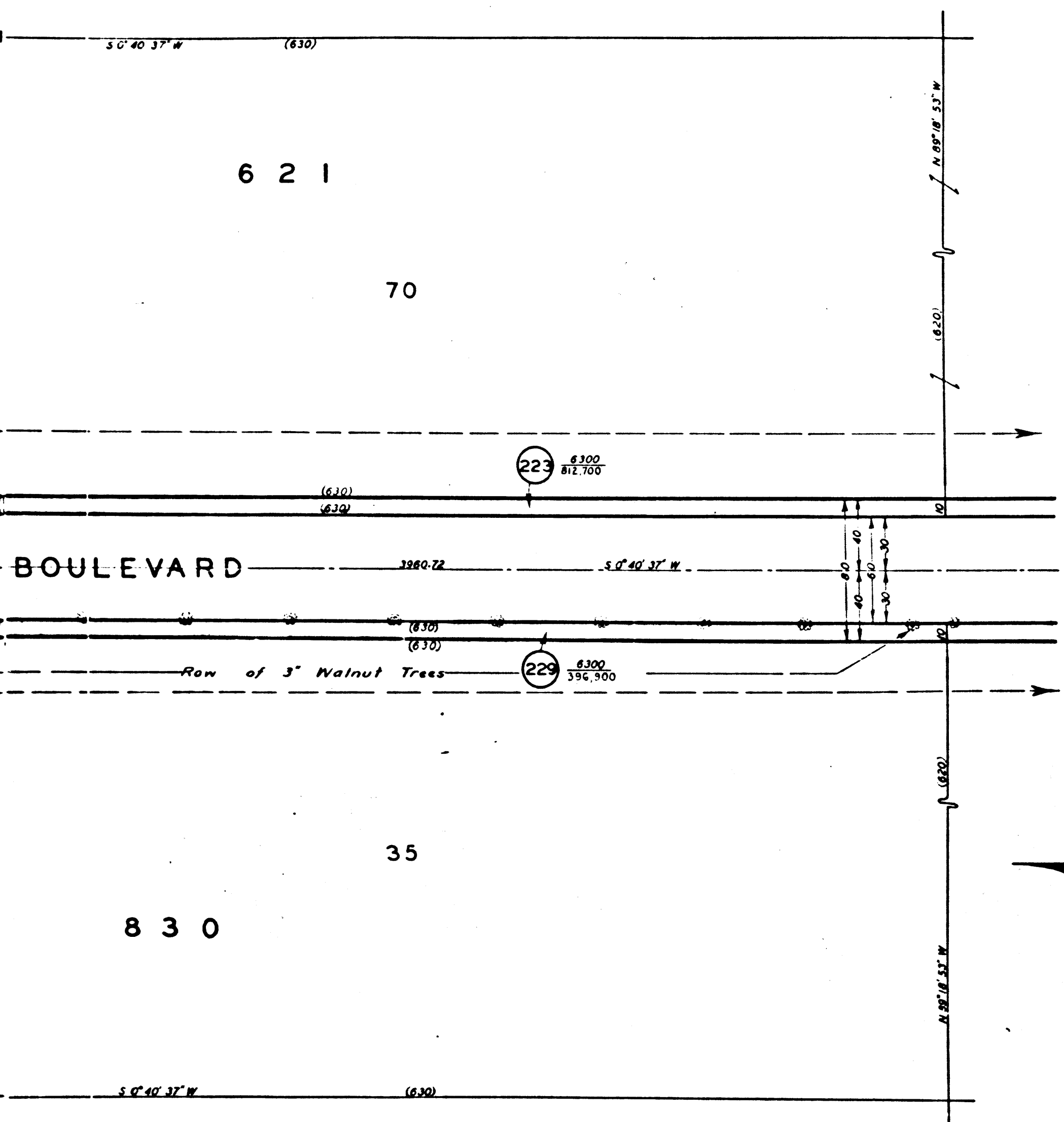
8

C.F. 1846 2-2



9

C.F. 1846 2-2



See Sheet No. 9

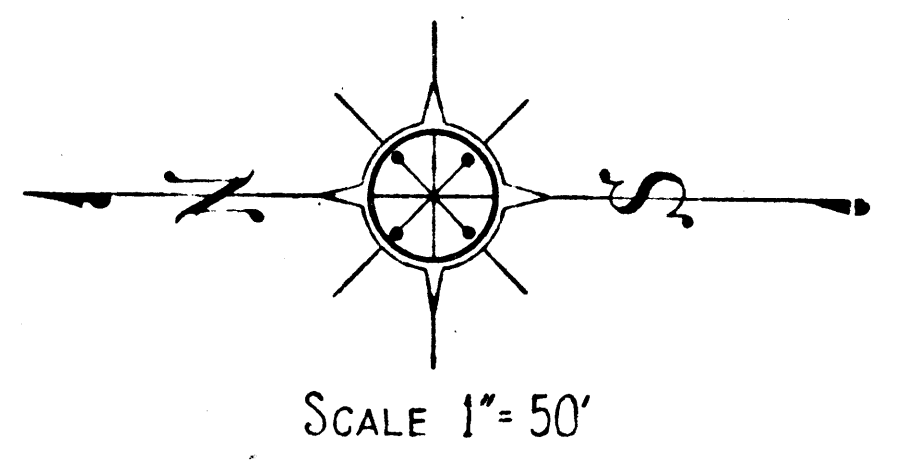
A. & I. DISTRICT NO. 281		
SHEET NO. 8 OF 11 SHEETS		
DRAWN BY	Q.W. FINLEY	OCT. 1929
TRACED BY	E.T. HUBBERT	OCT. 1929
CHECKED BY	L. LONGACRE	OCT. 1929
REVISED		
C.S. INDEX MAP NO. 37		

A. & I. DISTRICT NO. 281
ROSEMEAD BOULEVARD
CONDEMNATION MAP
SHEET NO. 8 OF 11 SHEETS

A. & I. DISTRICT NO. 281
ROSEMEAD BOULEVARD
CONDEMNATION MAP
SHEET NO. 8 OF 11 SHEETS

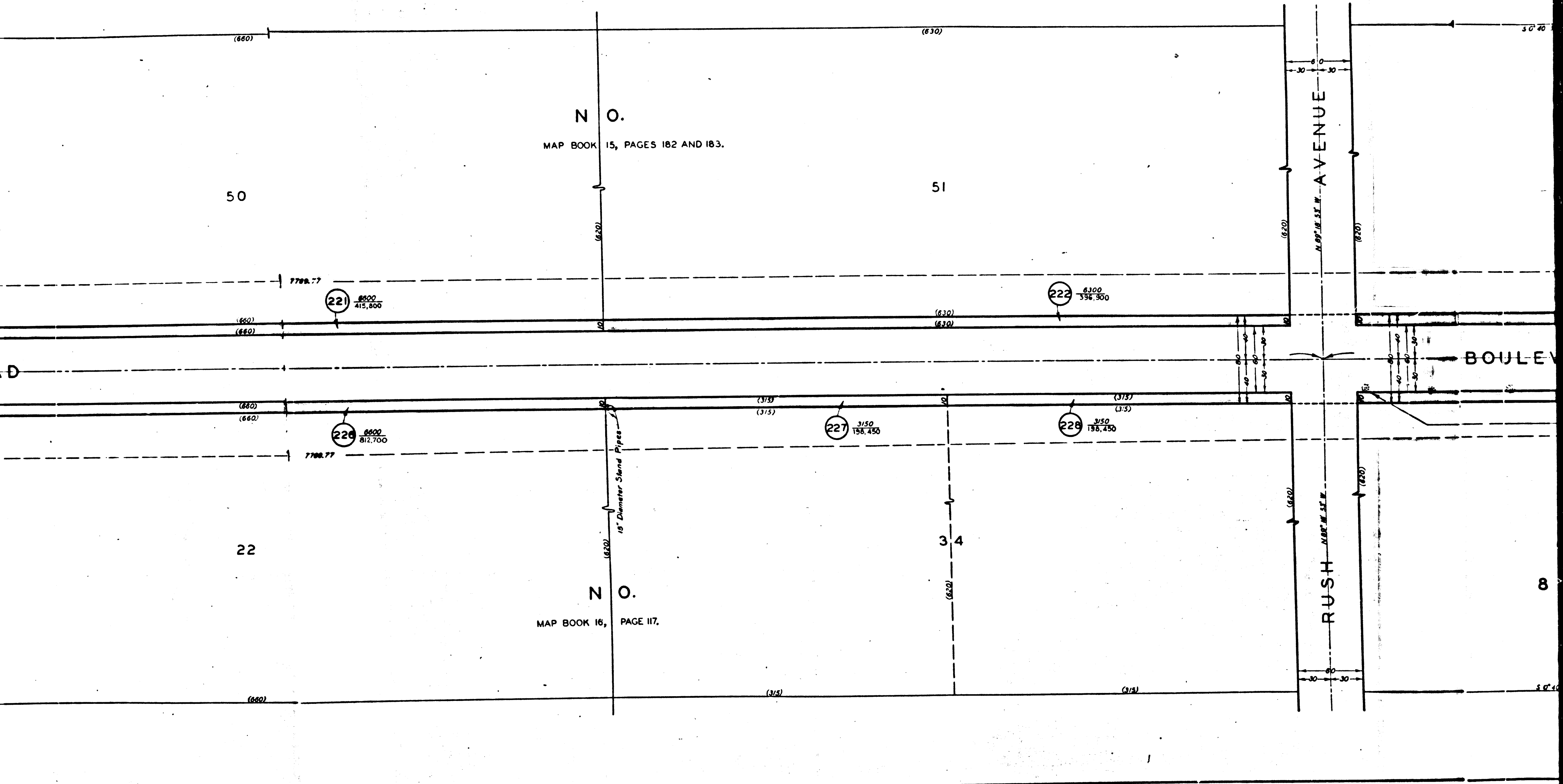
A. & I. DISTRICT NO. 281
ROSEMEAD BOULEVARD
CONDEMNATION MAP
SHEET NO. 9 OF 11 SHEETS

A. & I. DISTRICT NO. 281
ROSEMEAD BOULEVARD
CONDEMNATION MAP
SHEET NO. 9 OF 11 SHEETS



See Sheet No. 8

10
C.F. 1846 2-2



N O.
MAP BOOK 15, PAGES 182 AND 183.

N O.
MAP BOOK 16, PAGE 117.

N 89° 16' 51" W. AVENUE

RUSH N 89° 16' 51" W.

BOULEVARD

15" Diameter Steel Pipes

221 $\frac{8500}{415,800}$

222 $\frac{6300}{396,900}$

226 $\frac{6600}{812,700}$

227 $\frac{3150}{156,450}$

228 $\frac{3150}{156,450}$

C.F. 1846 2 2

(660) S 0° 40' 37" W

30

219 6600
1247,400

(660)
(660)

S 0° 37' W 3950.72

(660)
(660)

224 6600
415,800

11

(660) S 0° 40' 37" W

T R A C T

(660)

(660)

(660)

T R A C T

(660)

31

220 6600
1,247,400

(660)
(660)

(660)
(660)

225 6600
812,700

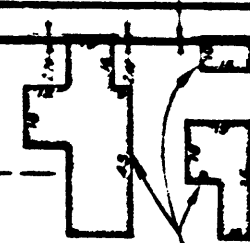
21

(660)

(660)

(660)

ROSEMEAD

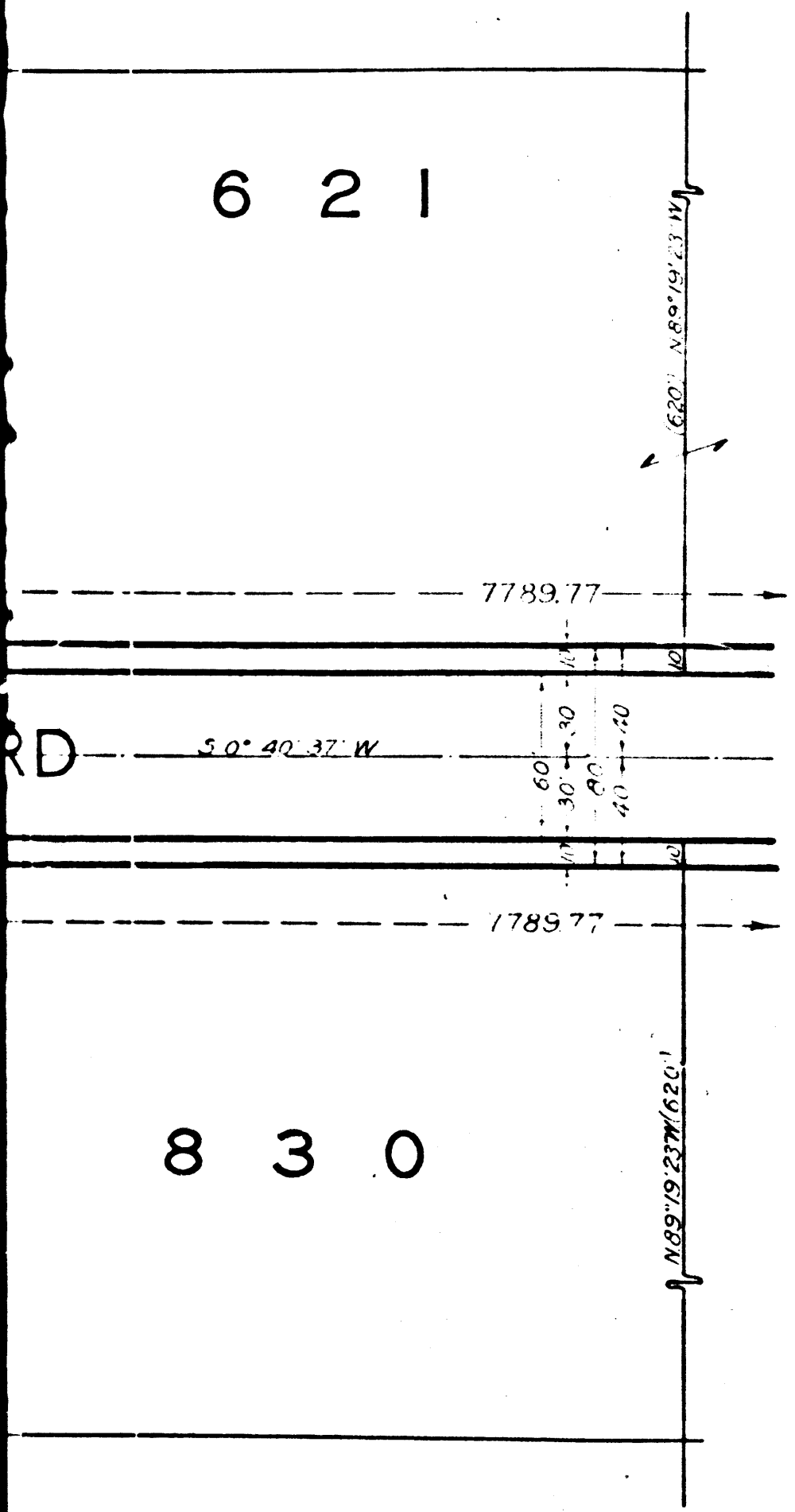


1 Story Frame House

6.5 x 13.5' Pump House

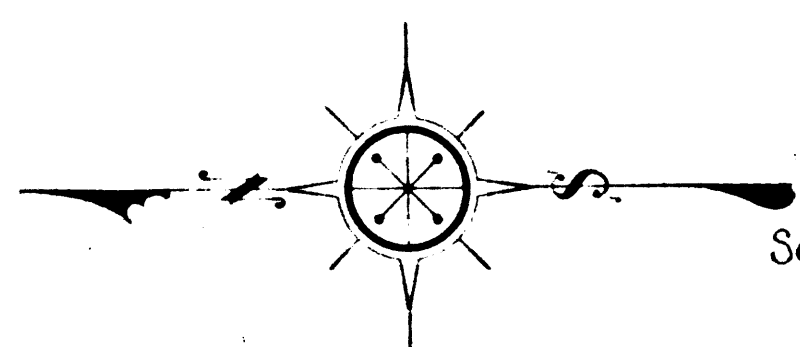
12

C.F. 1846 2-2



6 2 1

8 3 0



SCALE: 1" = 50'

A. & I. DISTRICT NO 281		
SHEET NO. 7 OF 11 SHEETS		
DRAWN BY	H. JOHNSON	OCT 1929
TRACED BY	H. WOODLEY	OCT 1929
CHECKED BY	L. LONGACRE	OCT. 1929
REVISED		
C.S. INDEX MAP NO. 37		

See Sheet No 8

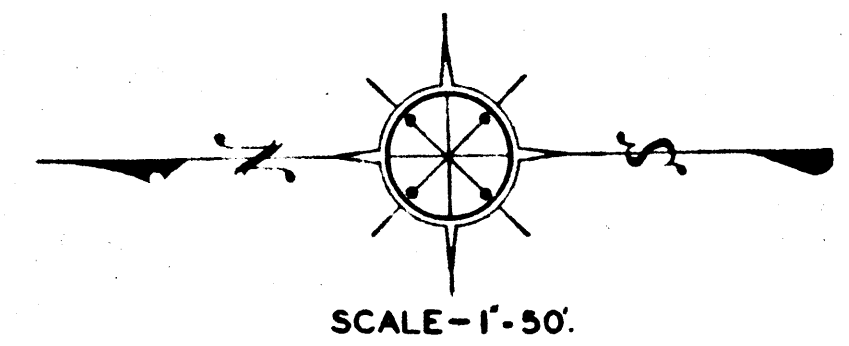
A. & I. DISTRICT NO. 281
ROSEMEAD BOULEVARD
CONDEMNATION MAP

A. & I. DISTRICT NO. 281
ROSEMEAD BOULEVARD
CONDEMNATION MAP
SHEET NO. 7 OF 11 SHEETS

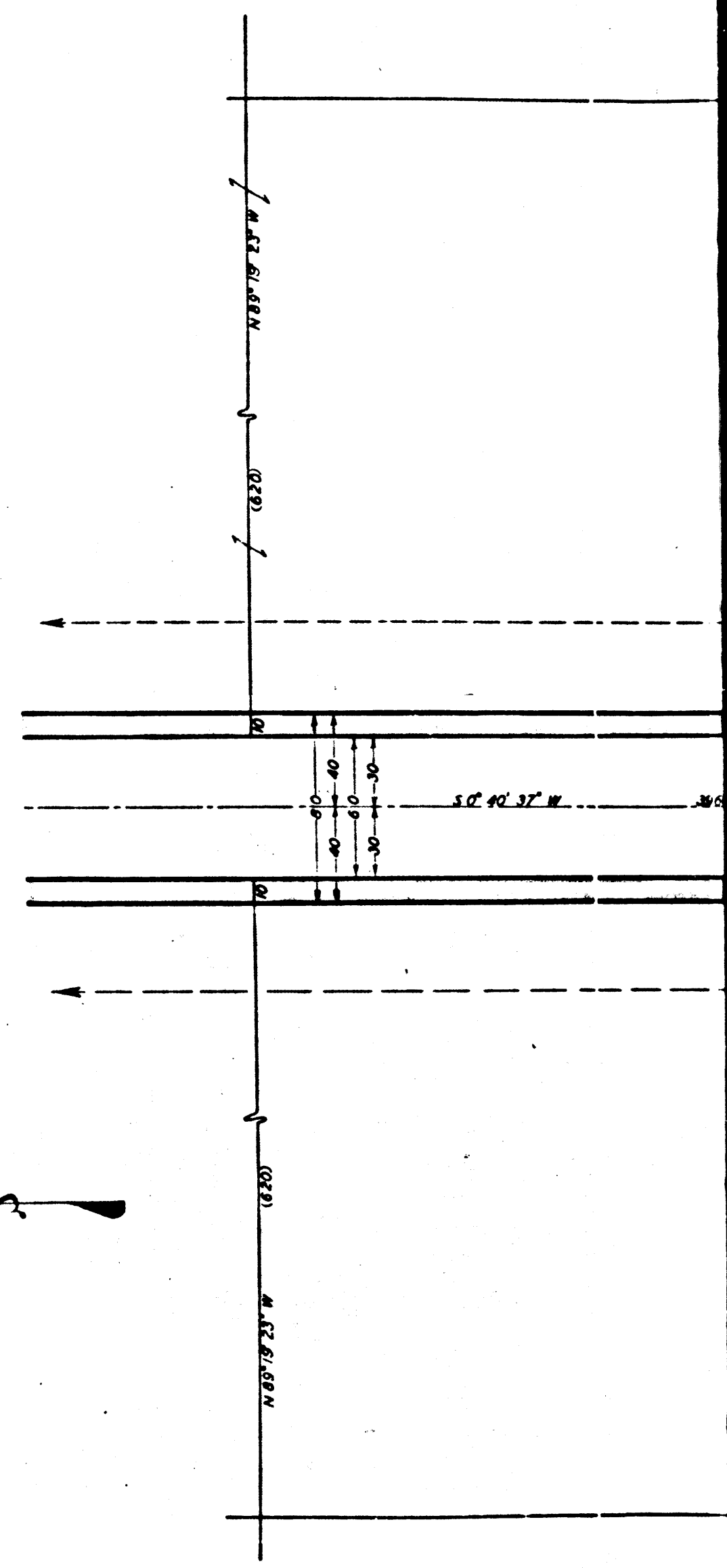
A. & I. DISTRICT NO. 281
ROSEMEAD BOULEVARD
CONDEMNATION MAP
SHEET NO. 8 OF 11 SHEETS

A. & I. DISTRICT NO. 281
ROSEMEAD BOULEVARD
CONDEMNATION MAP
SHEET NO. 8 OF 11 SHEETS

See Sheet No. 7

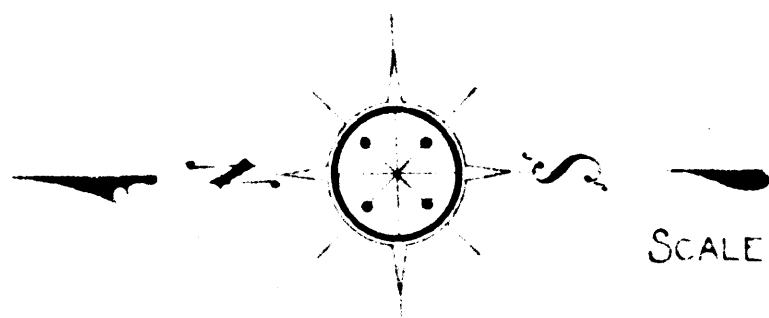


SCALE-1"-50'



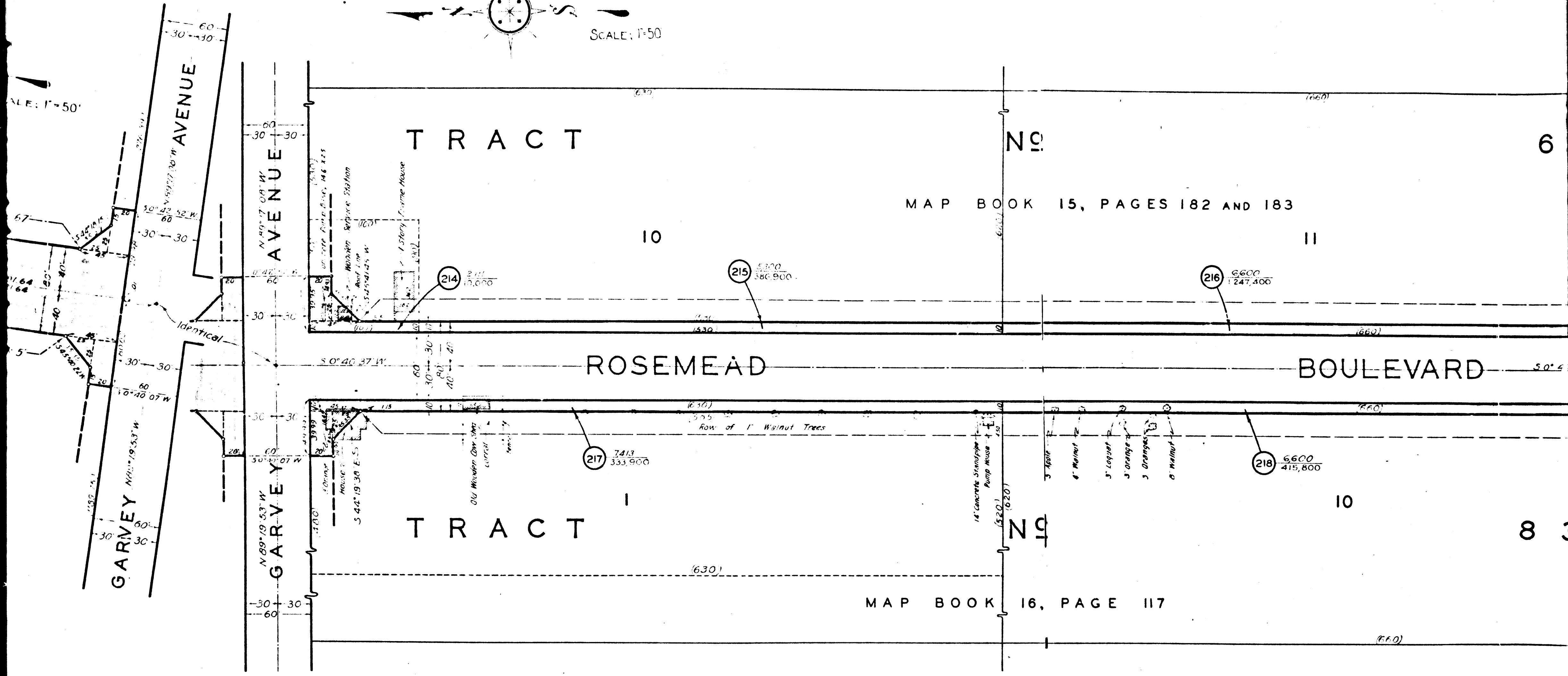
13

C.F. 1846 2-2



SCALE: 1"=50'

SCALE: 1"=50'



TRACT

No. 6

MAP BOOK 15, PAGES 182 AND 183

10

11

ROSEMEAD

BOULEVARD

TRACT

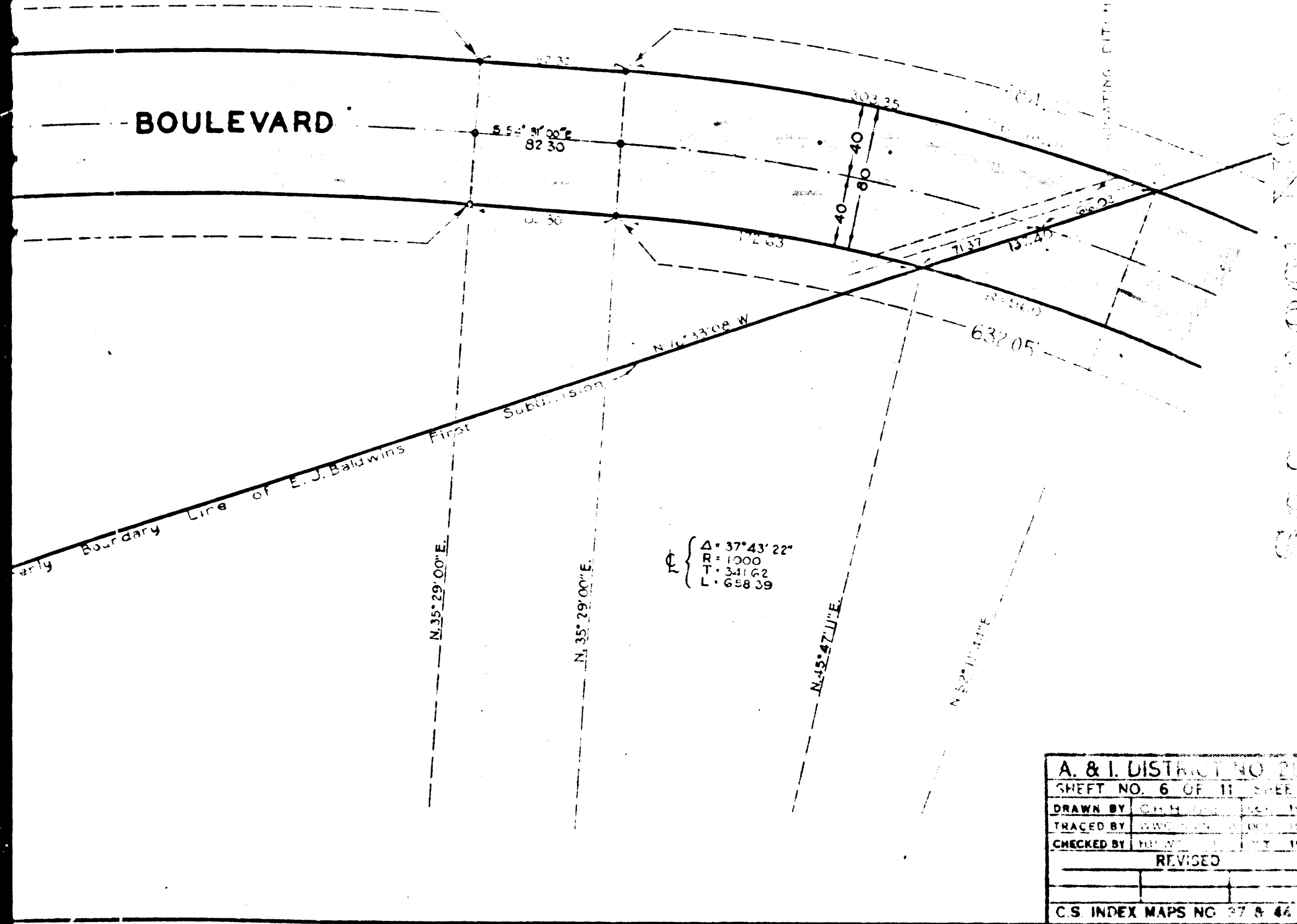
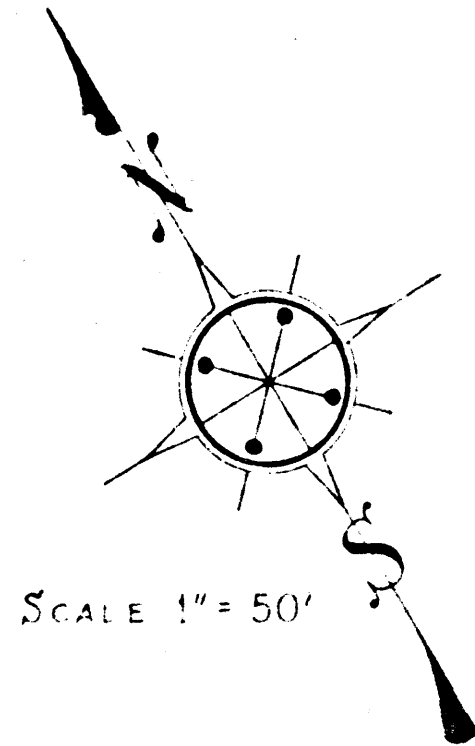
No. 8

MAP BOOK 16, PAGE 117

10

14

C.F. 1846 2-2

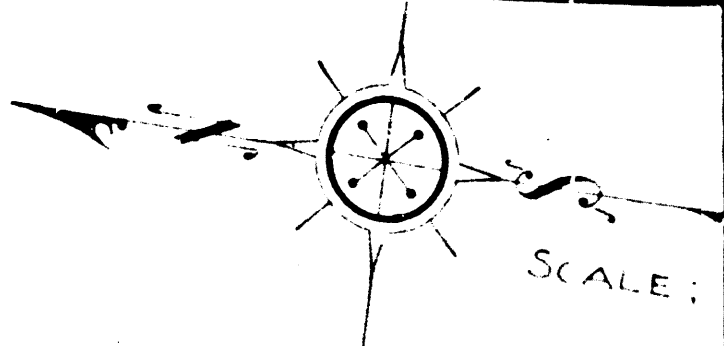
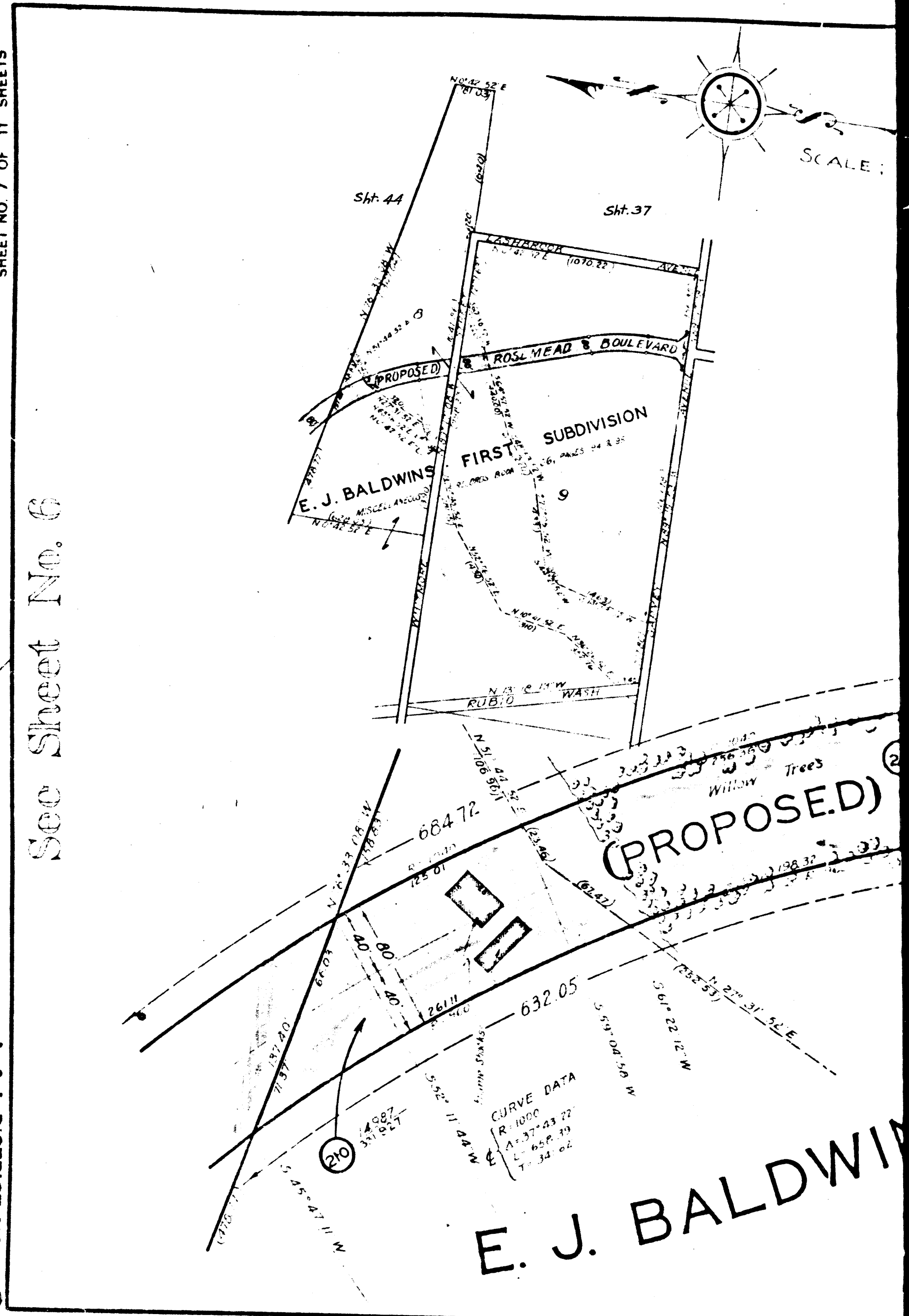


A. & I. DISTRICT NO. 281	
SHEET NO. 6 OF 11 SHEETS	
DRAWN BY	G.H.H.
TRACED BY	G.H.H.
CHECKED BY	G.H.H.
REVISED	
C.S. INDEX MAPS NO. 37 & 44	

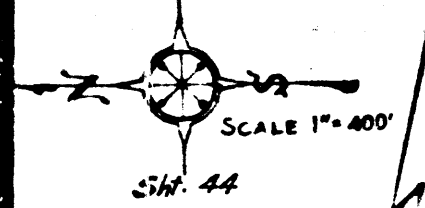
A. & I. DISTRICT NO. 281
 ROSEMEAD BOULEVARD
 CONDEMNATION MAP
 SHEET NO. 7 OF 11 SHEETS

A. & I. DISTRICT NO. 281
 ROSEMEAD BOULEVARD
 CONDEMNATION MAP
 SHEET NO. 7 OF 11 SHEETS

See Sheet No. 6



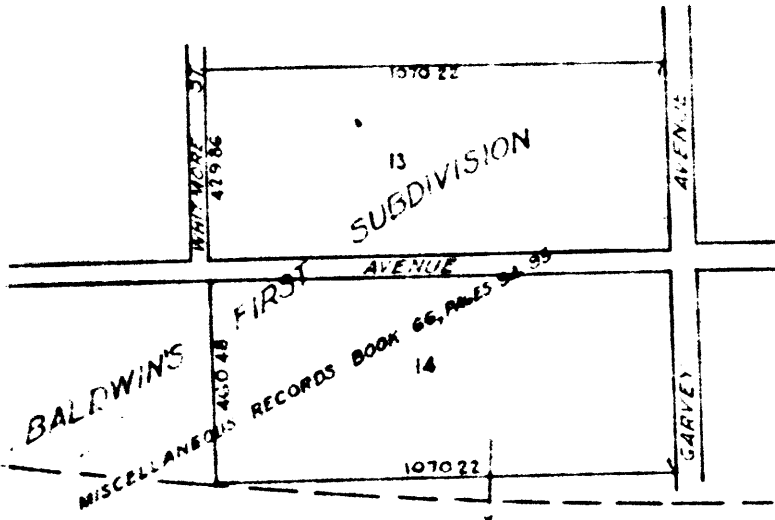
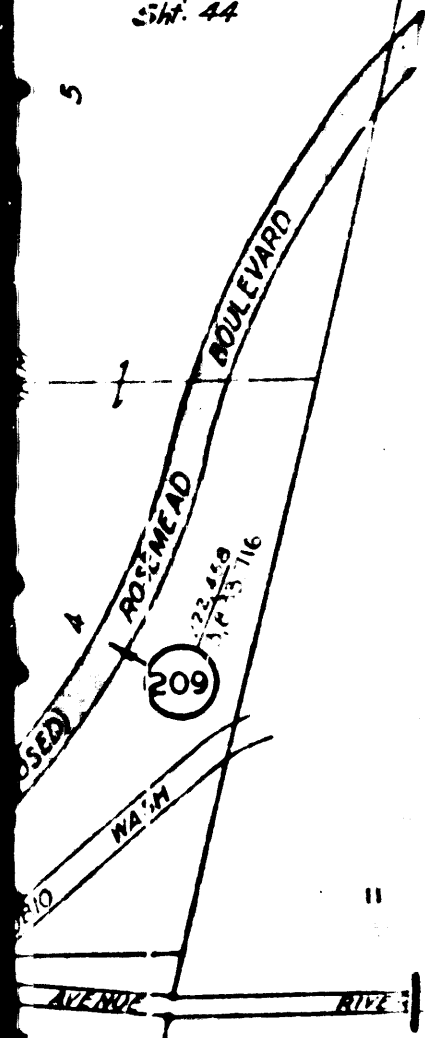
16
 C.F. 1846 2-2



$\Delta = 35^\circ 35' 00''$
 $R = 18.75$
 $T = 577.63$
 $L = 1117.88$

FRACTIONAL SECTION 19

T.S. R.I.W. S.B.M.



(PROPOSED)

ROSEMEAD

BARBED WIRE FENCE

$\Delta = 20^\circ 48' 08''$
 $R = 2000$
 $T = 367.11$
 $L = 726.14$

Northerly Boundary

17

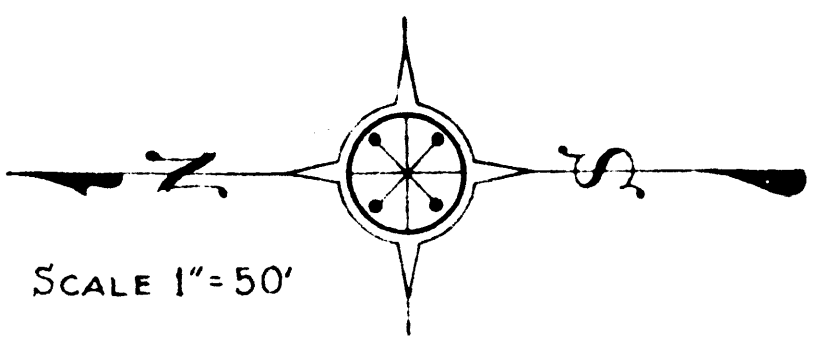
C.F. 1846 2-2

M.105

ROSEMEAD BOULEVARD
CONDEMNATION MAP
SHEET NO. 6 OF 11 SHEETS

See Sheet No. 5

A. & I. DISTRICT NO. 281
ROSEMEAD BOULEVARD
CONDEMNATION MAP

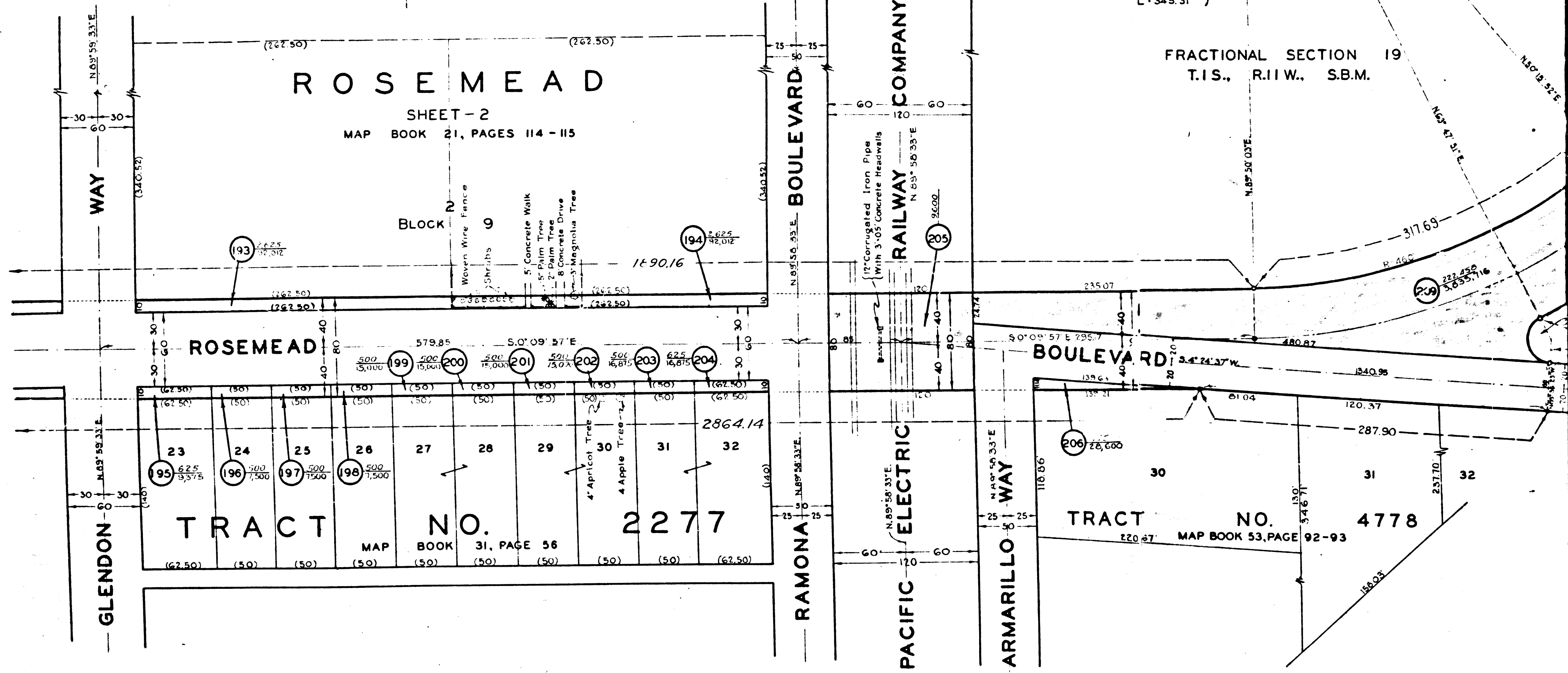


ROSEMEAD

SHEET - 2
MAP BOOK 21, PAGES 114 - 115

Δ = 39° 34' 11"
R = 500
T = 179.86
L = 345.31

FRACTIONAL SECTION 19
T.I.S., R.I.I.W., S.B.M.



Sht. 44

19

C.F. 1846 2-2