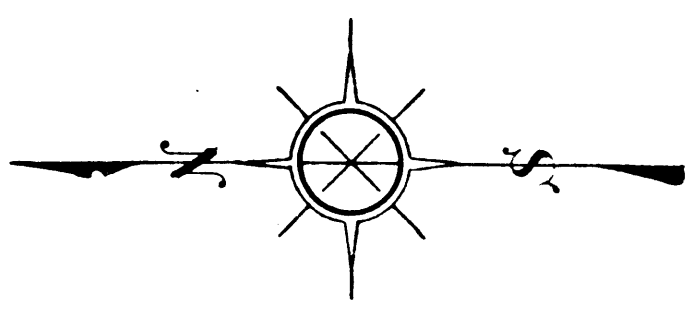
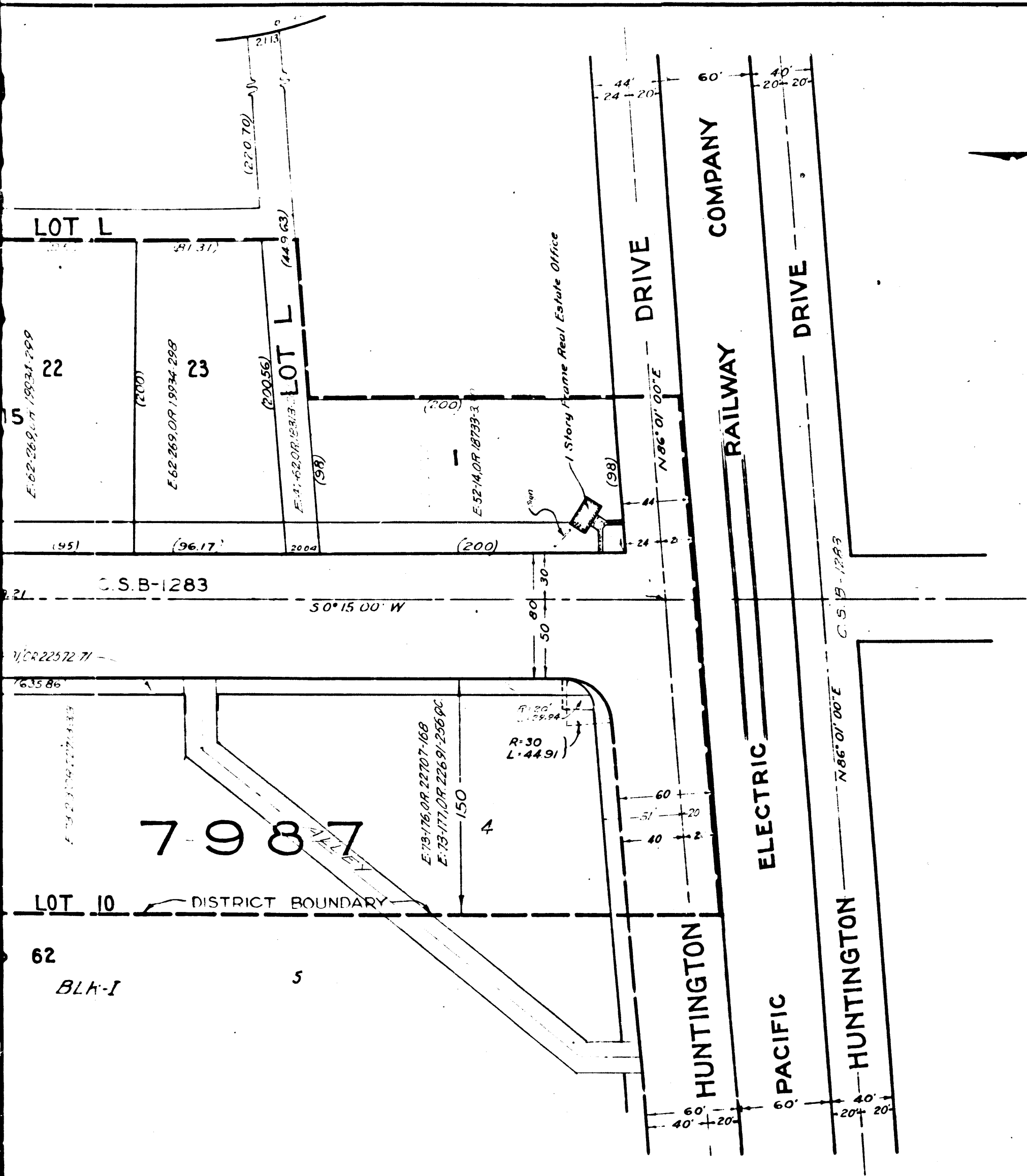


A-65
A-70



SCALE 1" = 50'

Sht. 44

Superior Court Case No. 312504
 Suit for Condemnation
 Filed Nov. 28th 1930
 County of Los Angeles, Pltff.
 Vs
 Minnie B. Agnew et al., Def.
 Interlocutory judgment as per
 map, rendered Aug. 9th 1932.
 Judg. Bk. 826-23.
 Amended interlocutory judgment
 as to parcels 1 and 41 to 67, render-
 ed July 7, 1933. Judg. Bk. 868-307.
 Final judgment in favor of Plaintiff
 as per map, rendered Jan. 3rd 1934,
 reserving unto certain defendants, how-
 ever, pipe line easements over parcels
 1 and 41 to 67 incl.
 D:96-62, O.R. 12614-3

**STREET OPENING DISTRICT NO. 95
 OF THE COUNTY OF LOS ANGELES**

FOR
 THE OPENING, WIDENING, AND EXTENDING OF

ROSEMEAD BOULEVARD

AND THE WIDENING OF
 BLANCHE STREET

MAP SHOWING PROPERTY TO BE ACQUIRED AND DISTRICT TO BE BENEFITED.
 KNOWN AS THE "ASSESSMENT DISTRICT." TO BE ASSESSED FOR EXPENSES OF
 OPENING, WIDENING, AND EXTENDING, PROPOSED: ALL IN ACCORDANCE WITH
 THE PROVISIONS OF THE COUNTY STREET OPENING ACT OF 1923, APPROVED
 MAY 11, 1923.

SCALE: 1" = 50'.

MAY, 1930.

J. E. ROCKHOLD — COUNTY SURVEYOR

SUBMITTED:

Alfred Jones
 ALFRED JONES
 CHIEF DEPUTY

APPROVED:

J. E. Rockhold
 J. E. ROCKHOLD
 COUNTY SURVEYOR

APPROVED AS TO FORM:
 EVERETT W. MATTOON, COUNTY COUNSEL

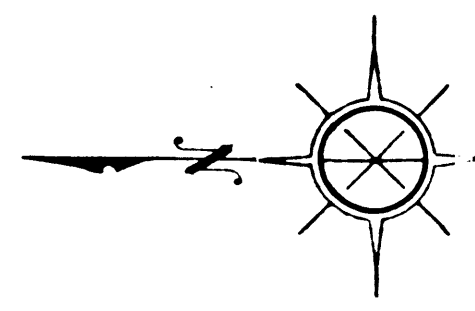
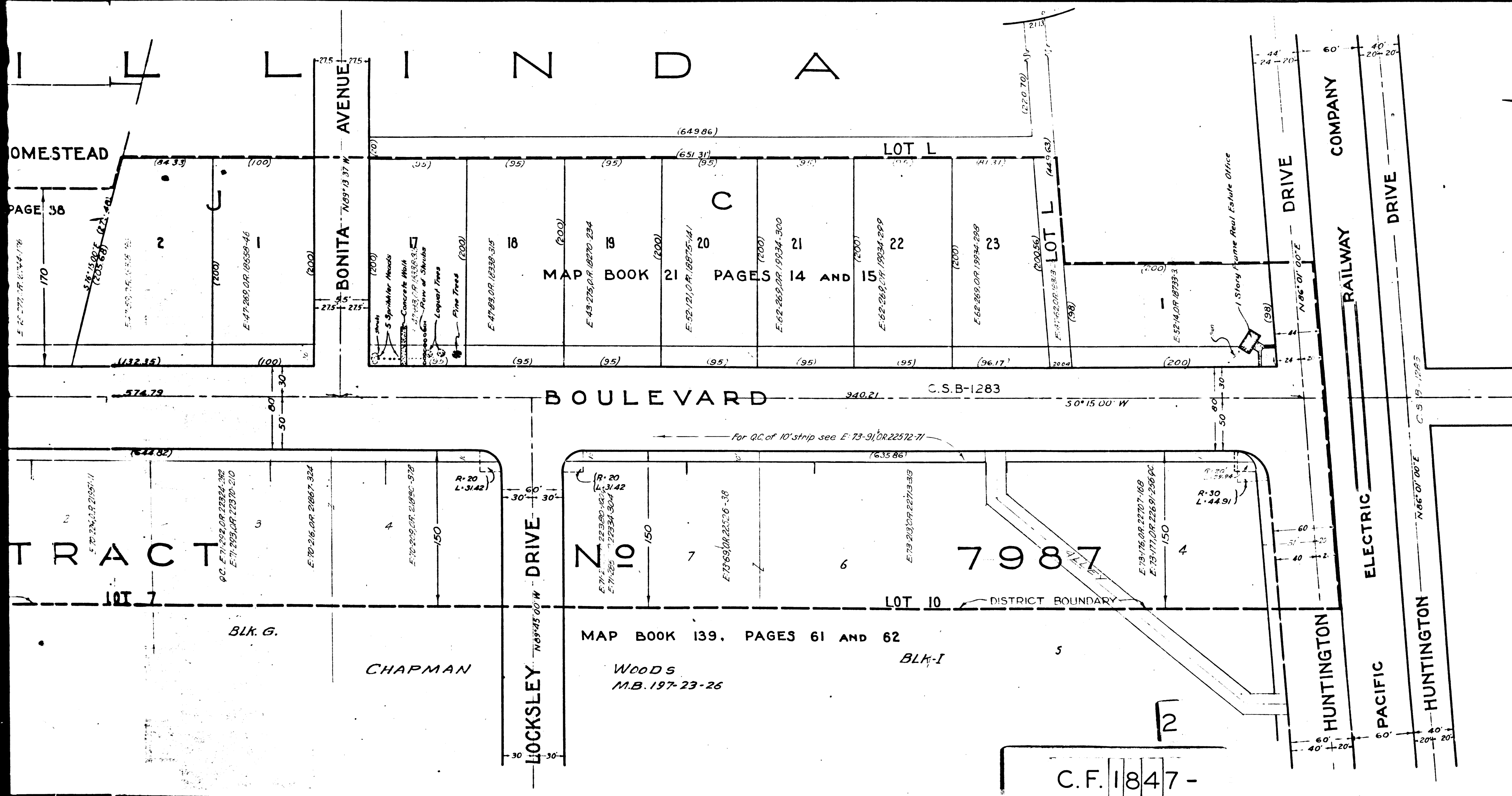
W. B. McMillan
 DEPUTY COUNTY COUNSEL

LEGEND

DISTRICT BOUNDARY SHOWN THUS —————
 LAND IN WHICH AN EASEMENT IS SOUGHT TO BE ACQUIRED
 FOR PUBLIC HIGHWAY PURPOSES. SHOWN IN RED.
 NUMBERS IN CIRCLES INDICATE PARCELS SOUGHT TO BE CONDEMNED.
 FIGURES SHOWN IN PARENTHESES () ARE EITHER RECORD
 DISTANCES OR ARE CALCULATED FROM RECORD DISTANCES.
 FIGURES SHOWN THUS:
 0,000 INDICATE AREA TO BE ACQUIRED. IN SQUARE FEET.
 00,000 INDICATE AREA OF HOLDING. INCLUDING AREA TO
 BE ACQUIRED. IN SQUARE FEET.

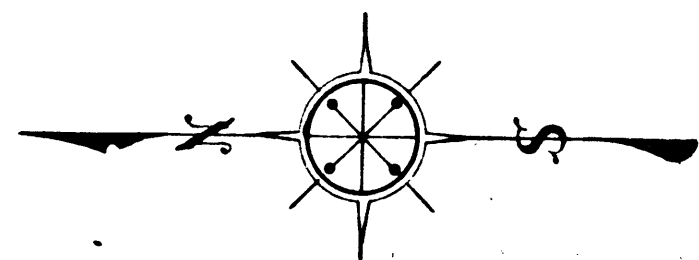
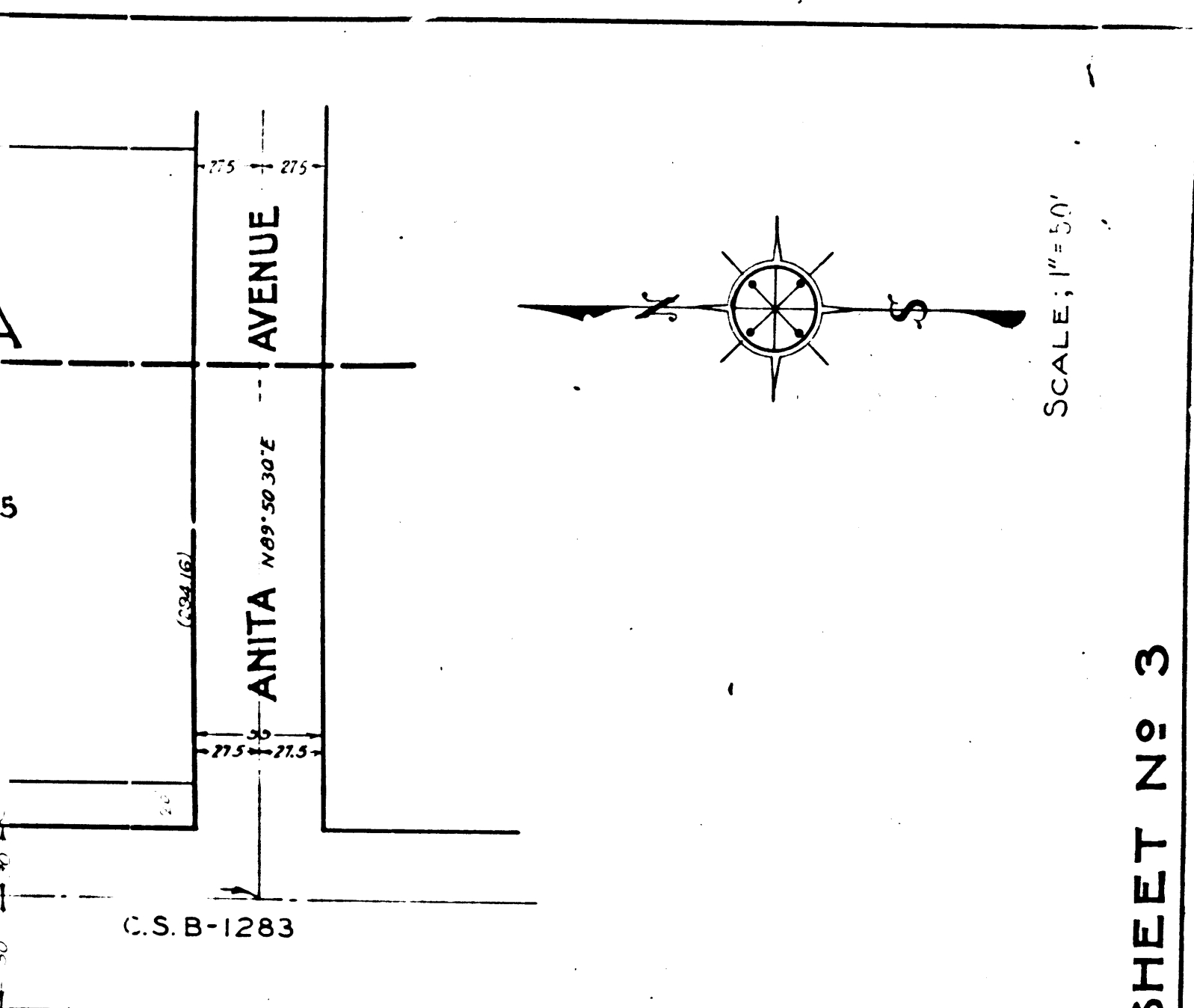
S. O. DISTRICT NO. 95	
SHEET NO. 3 OF 3 SHEETS	
DRAWN BY	LONGACRE OCT. 1929
TRACED BY	FINLEY NOV. 1929
CHECKED BY	HARRIS OCT. 1929
REVISED	

C.F. 1847-



Superior
 Suit
 Filed
 County of
 Minnie
 Interlocu
 map, rec
 Judg. Bk
 Amended
 as to part
 ed July 7
 Final judg
 as per ma
 reserving
 ever, one
 1 and 41 +
 D:96

C.F. 1847 -



SCALE: 1" = 50'

S. O. DISTRICT NO. 95
ROSEMEAD BOULEVARD

SEE SHEET NO 3

CHAPMAN

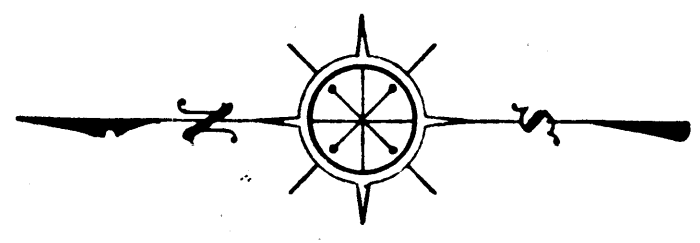
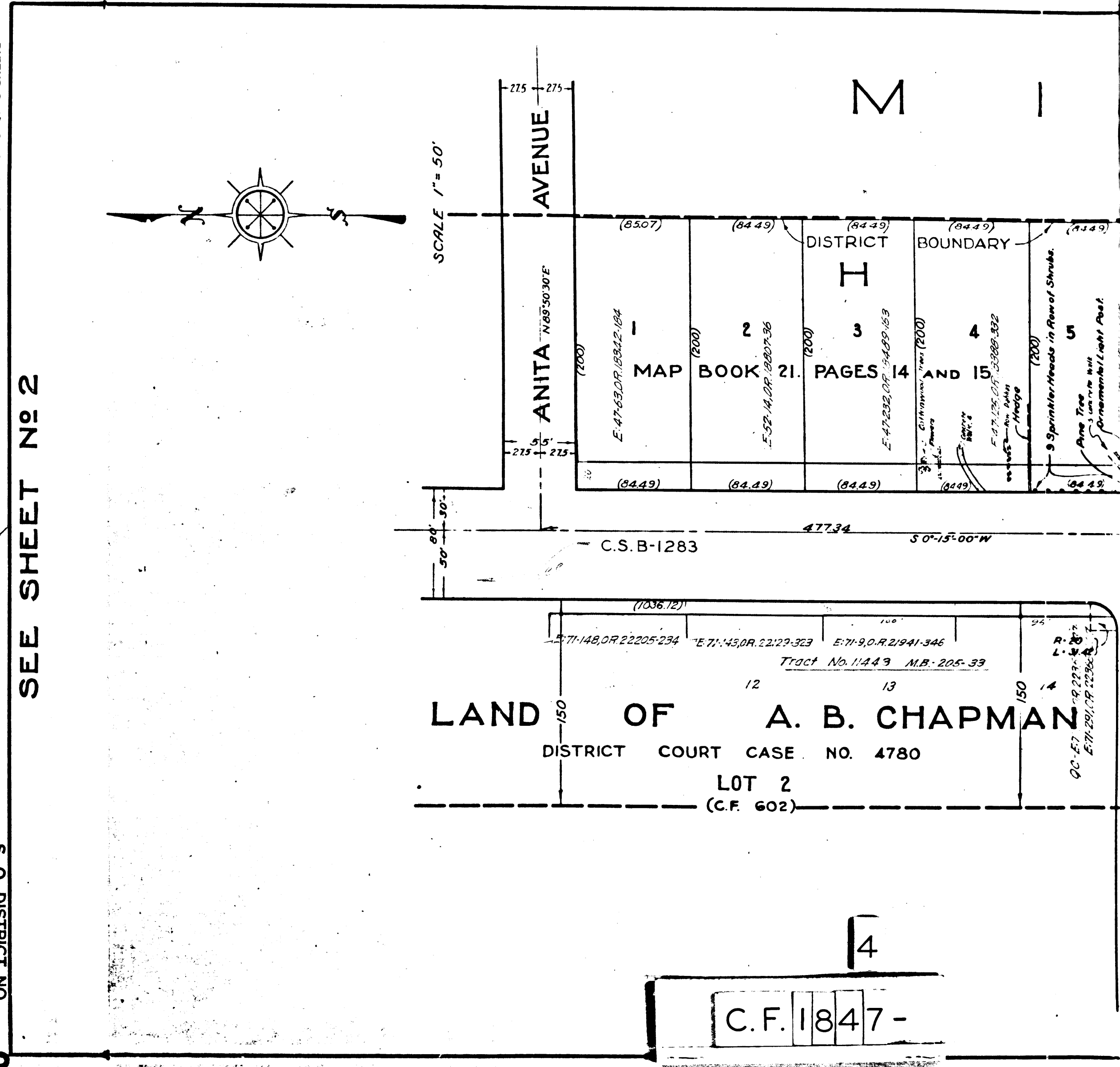
S. O. DISTRICT NO. 95	
SHEET NO. 2 OF 3 SHEETS	
DRAWN BY	LONGACRE
TRACED BY	WOODLEY
CHECKED BY	WOODLEY
REVISED	
C.S. INDEX MAP NO. 44	

ROSEMEAD BOULEVARD
CONDENATION & DISTRICT MAP
SHEET NO. 2 OF 3 SHEETS

S. O. DISTRICT NO. 95
ROSEMEAD BOULEVARD
CONDENATION & DISTRICT MAP
SHEET NO. 3 OF 3 SHEETS

SEE SHEET NO 2

S. O. DISTRICT NO. 95
ROSEMEAD BOULEVARD
CONDENATION & DISTRICT MAP
SHEET NO. 3 OF 3 SHEETS



SCALE: 1" = 50'

C.S. B-1283

LAND OF A. B. CHAPMAN
DISTRICT COURT CASE NO. 4780
LOT 2
(C.F. 602)

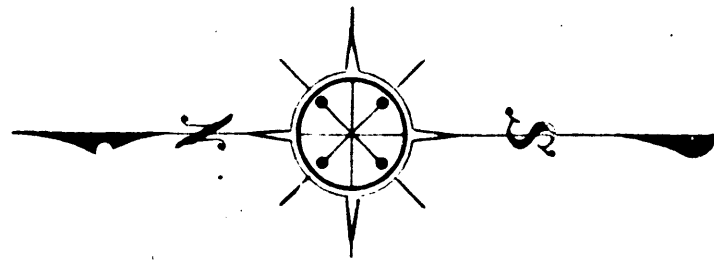
C.F. 1847-

QC-E7
E-71-201, OR 22296

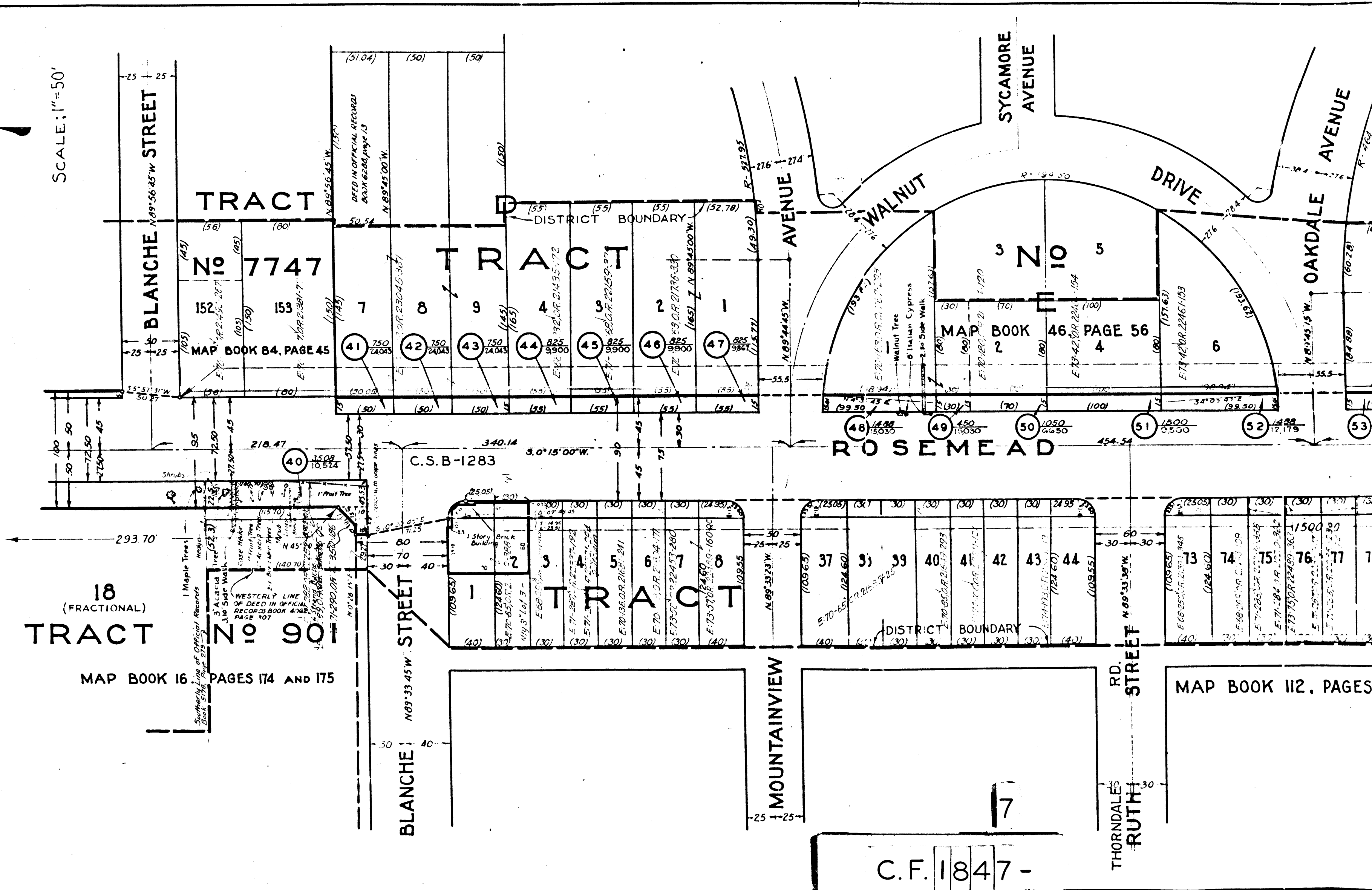
S. O. DISTRICT NO. 95
ROSEMEAD BOULEVARD
CONDEMNATION & DISTRICT MAP
SHEET NO. 2 OF 3 SHEETS

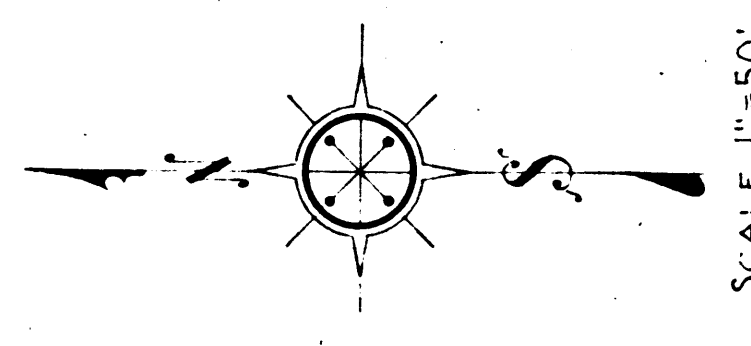
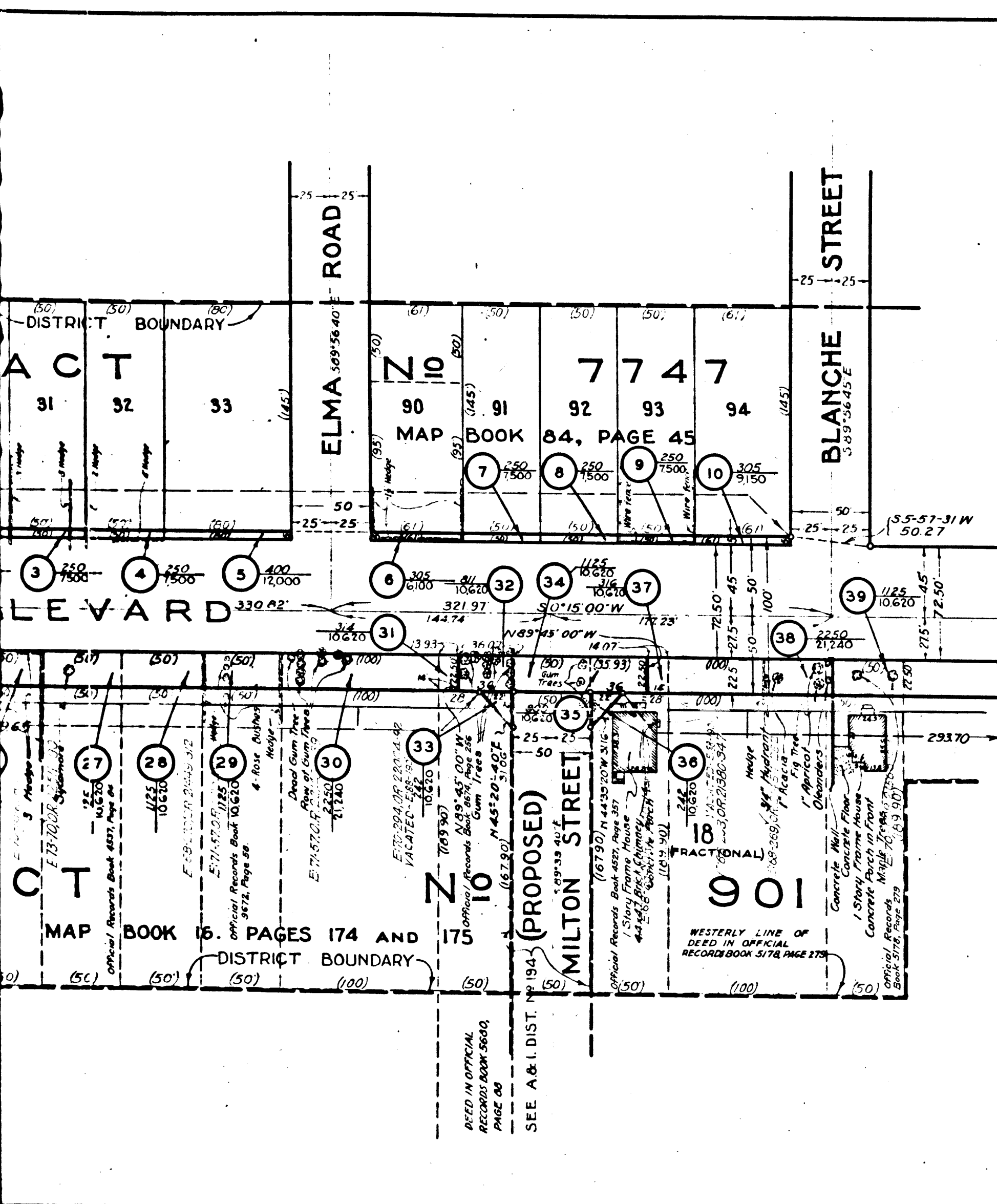
S. O. DISTRICT NO. 95
ROSEMEAD BOULEVARD
CONDEMNATION & DISTRICT MAP
SHEET NO. 2 OF 3 SHEETS

SEE SHEET NO 1



SCALE: 1"=50'





SCALE 1"=50'

SEE SHEET NO 2

S. O. DISTRICT NO. 95	
SHEET NO. 1 OF 3 SHEETS	
DRAWN BY	LONGCRE
TRACED BY	WOODLEY
CHECKED BY	CHUGHES
OCT. 1929	
NOV. 1929	
OCT. 1929	
REVISED	
C.S. INDEX MAP NO. 44	

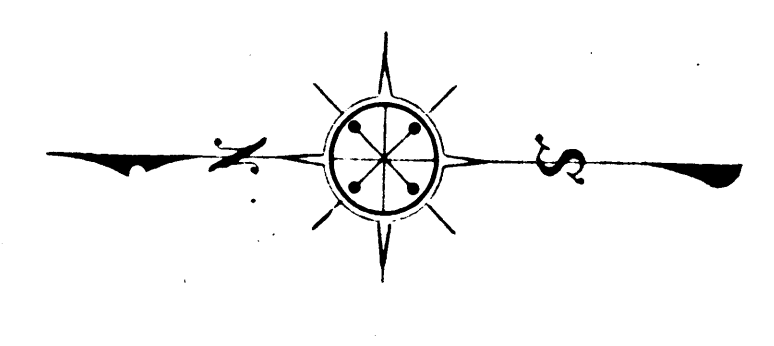
S. O. DISTRICT NO. ROSEMEAD BOULEVARD CONDEMNATION & DISTRICT MAP SHEET NO. 1 OF 3 SHEETS **95**

S. O. DISTRICT NO. ROSEMEAD BOULEVARD CONDEMNATION & DISTRICT MAP SHEET NO. 1 OF 3 SHEETS **95**

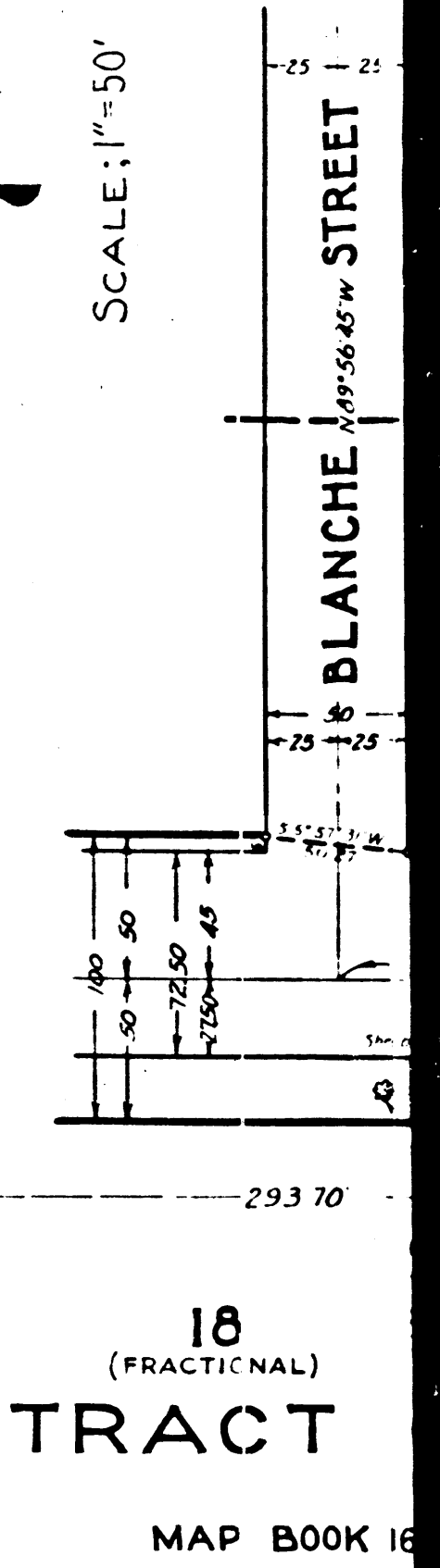
S. O. DISTRICT NO. ROSEMEAD BOULEVARD CONDEMNATION & DISTRICT MAP SHEET NO. 2 OF 3 SHEETS **95**

S. O. DISTRICT NO. ROSEMEAD BOULEVARD CONDEMNATION & DISTRICT MAP SHEET NO. 2 OF 3 SHEETS **95**

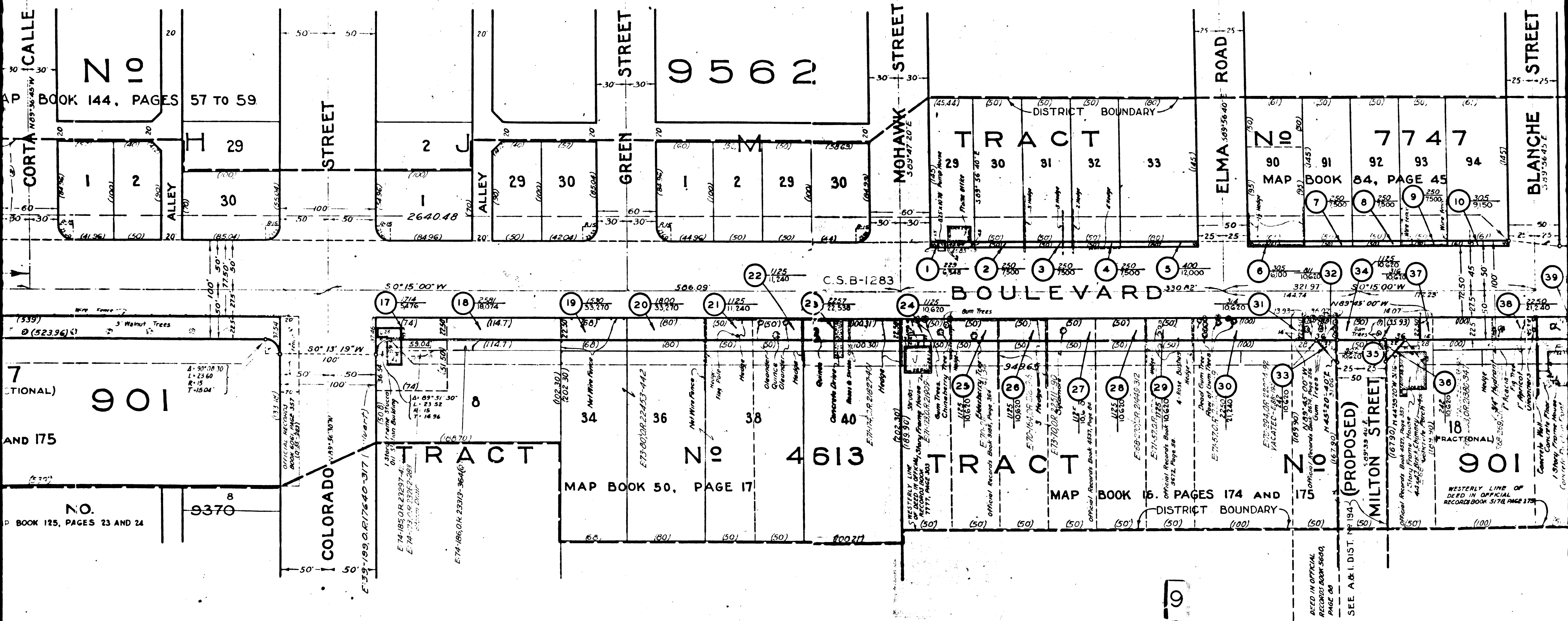
SEE SHEET NO 1



SCALE: 1"=50'



8
C.F. 1847-



CORTA CALLE
769°36'45"W

No 10

MAP BOOK 144, PAGES 57 TO 59

STREET

GREEN STREET

9562

MOHAWK STREET
50°47'20"E

ELMA ROAD
50°56'40"E

BLANCHE STREET

DISTRICT BOUNDARY

TRACT
29 30 31 32 33

No 7747
MAP BOOK 84, PAGE 45

BOULEVARD
330.82'

901
AND 175
NO. 9370

COLORADO
149°56'10"W

TRACT

TRACT
No 4613
MAP BOOK 50, PAGE 17

TRACT
MAP BOOK 15, PAGES 174 AND 175
DISTRICT BOUNDARY

MILTON STREET
194°

TRACT
No 901
WESTERLY LINE OF DEED IN OFFICIAL RECORD BOOK 5174 PAGE 178

C.F. 1847 -

DEED IN OFFICIAL RECORD BOOK 5600, PAGE 26
SEE A & I. DIST. # 1947

TRACT

ARBOLEDA N 29° 36' 45" W STREET

SIERRA GRANDE STREET

WALNUT STREET

CORTA CALLE N 69° 36' 45" W STREET

STREET

MAP BOOK 144, PAGES 57 TO 59

No

DISTRICT BOUNDARY

FOR WIDENING BETWEEN THESE POINTS

ROSEMEAD

SEE C.S.B-1283

TRACT 5

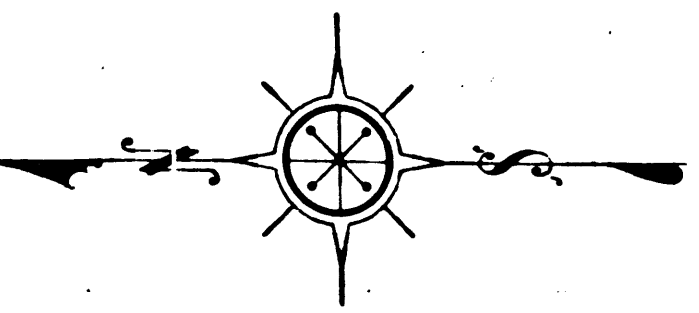
TRACT NO. 7 (FRACTIONAL) 901

MAP BOOK 16, PAGES 174 AND 175

TRACT

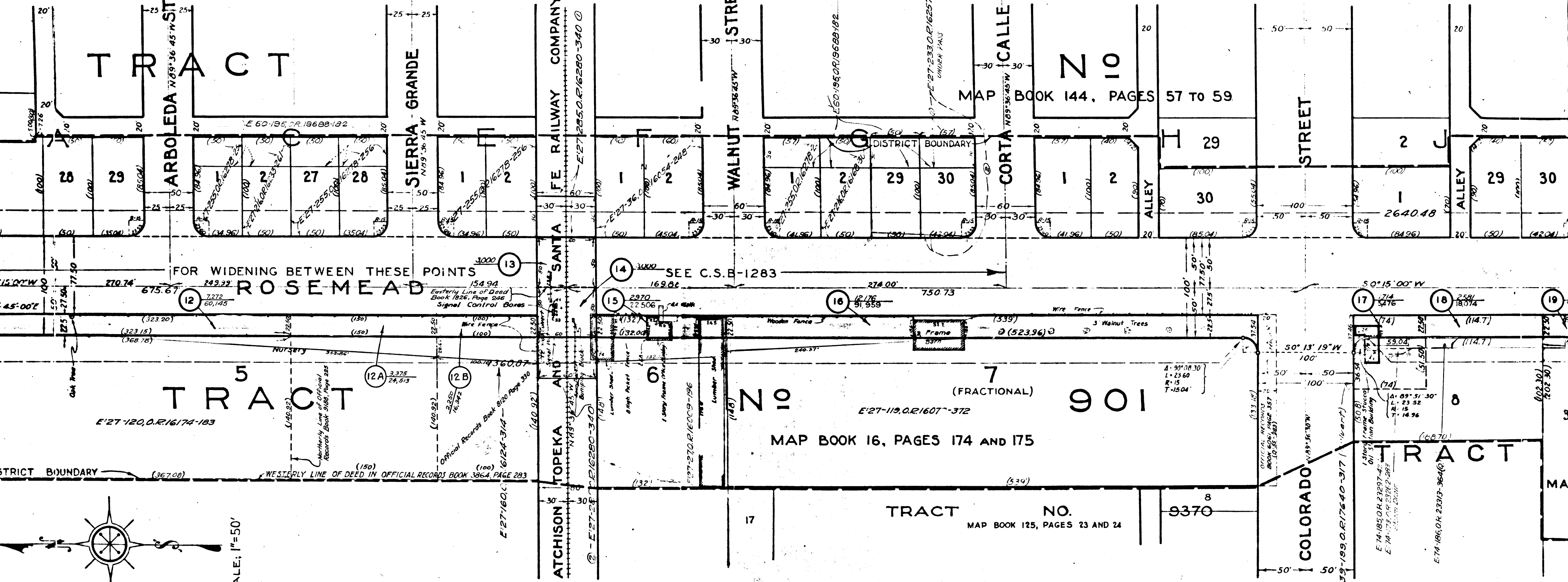
TRACT NO. 8 9370

MAP BOOK 125, PAGES 23 AND 24



SCALE: 1"=50'

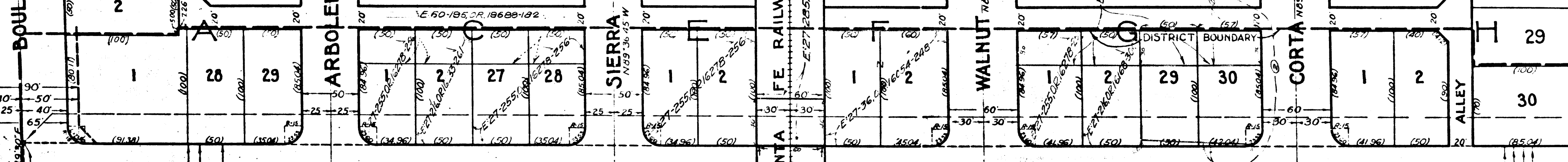
C.F. 1847-



BOULEVARD
ARBOLEDA STREET
SIERRA GRANDE STREET
WALNUT STREET
CORTA CALLE

TRACT NO. 29
TRACT NO. 30
TRACT NO. 10
TRACT NO. 17
TRACT NO. 8

MAP BOOK 144, PAGES 57 TO 59



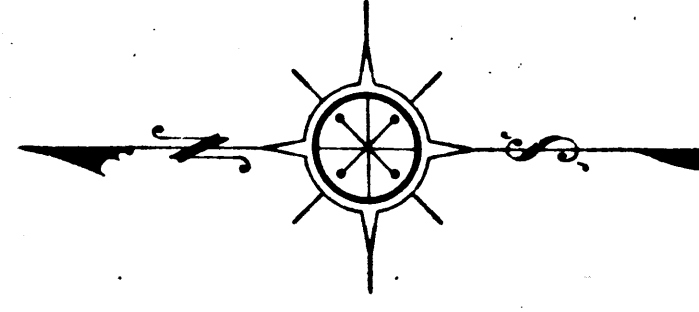
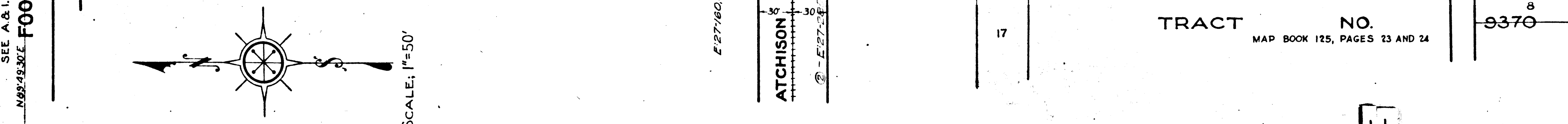
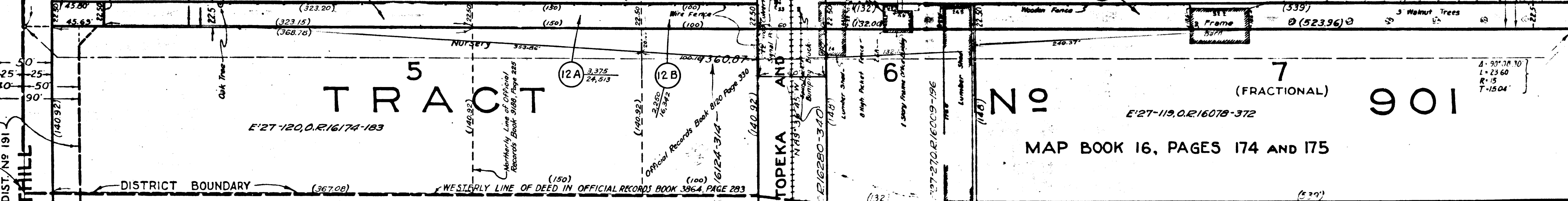
ROSEMEAD

FOR WIDENING BETWEEN THESE POINTS

SEE C.S.B-1283

TRACT NO. 5
TRACT NO. 6
TRACT NO. 7 (FRACTIONAL)
TRACT NO. 901

MAP BOOK 16, PAGES 174 AND 175



SCALE: 1"=50'

POINT OF BEGINNING

SEE A. & I. DIST. NO. 191
N 89° 49' 30" E

C.F. 1847-