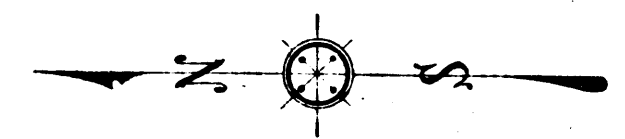
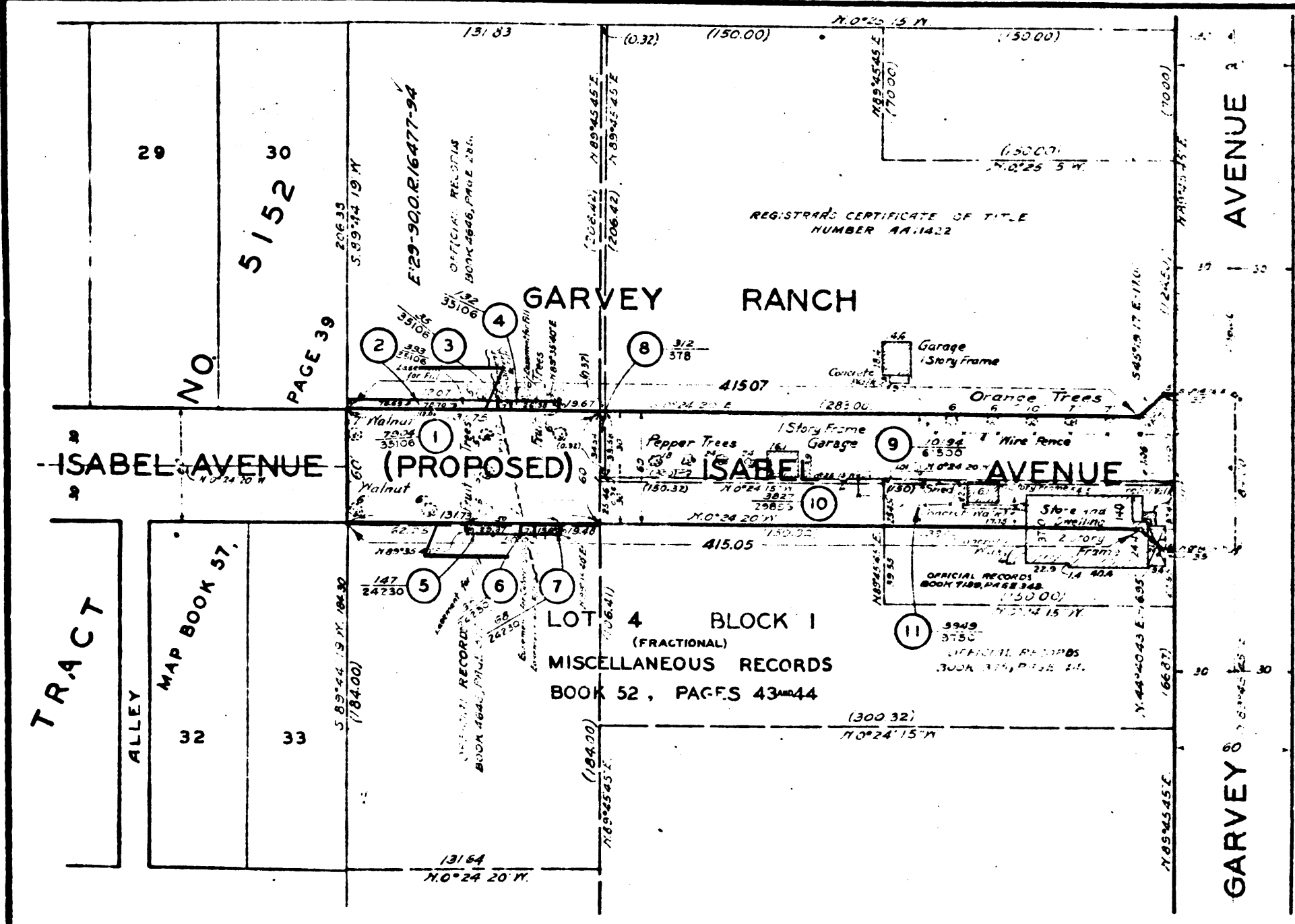


A & I DISTRICT NO. 243
ISABEL AVENUE
CONDEMNATION MAP
SHEET NO. 1 OF 1 SHEET

A & I DISTRICT NO. 243
ISABEL AVENUE
CONDEMNATION MAP
SHEET NO. 1 OF 1 SHEET



SCALE: 1"=50'

Sht. 44

EXHIBIT "A"
ACQUISITION AND IMPROVEMENT DISTRICT NO. 243
OF THE COUNTY OF LOS ANGELES
FOR
THE OPENING, EXTENDING, IMPROVEMENT OF AND WORK UPON
ISABEL AVENUE.

Superior Court Case No. 312150
Suit for Condemnation
Filed Nov. 20th 1930
County of Los Angeles, Plff.
Vs
H. E. Corbett et al, Defendants.
Case dismissed Oct. 17, 1940.

MAP SHOWING PROPERTY TO BE ACQUIRED IN ACCORDANCE WITH THE PROVISIONS OF THE ACQUISITION AND IMPROVEMENT ACT OF 1925, APPROVED MAY 23, 1925, COMMONLY KNOWN AS THE 'MATTOON ACT.'
SCALE: 1"=50' JUNE, 1930.
J. E. ROCKHOLD — COUNTY SURVEYOR

SUBMITTED: *Alfred Jones*
ALFRED JONES
CHIEF DEPUTY

APPROVED: *J. E. Rockhold*
J. E. ROCKHOLD
COUNTY SURVEYOR

APPROVED AS TO FORM:
EVERETT W. MATTOON, COUNTY COUNSEL.

W. B. [Signature]
DEPUTY COUNTY COUNSEL

LEGEND

PORTION COLORED RED SHOWS LOCATION, GENERAL ROUTE, AND TERMINI OF LAND IN WHICH AN EASEMENT FOR PUBLIC HIGHWAY PURPOSES IS SOUGHT TO BE ACQUIRED.
PORTION COLORED YELLOW SHOWS LOCATIONS OF EASEMENTS SOUGHT TO BE ACQUIRED OTHER THAN FOR PUBLIC HIGHWAY PURPOSES.
NUMBERS IN CIRCLES INDICATE PARCELS SOUGHT TO BE CONDEMNED.

FIGURES SHOWN IN PARENTHESSES () ARE EITHER RECORD DISTANCES OR CALCULATED FROM RECORD DISTANCES
FIGURES SHOWN THUS: 000 --- INDICATE AREA TO BE ACQUIRED, IN SQUARE FEET.
00000 --- INDICATE AREA OF HOLDING, INCLUDING AREA TO BE ACQUIRED, IN SQUARE FEET.
THE PARCELS ARE DESCRIBED IN PARAGRAPH VII OF THE COMPLAINT.

Negative of this map filed in Blue Print Dept. as Negative No. 212

A & I DISTRICT NO. 243	
SHEET NO. 1 OF 1 SHEETS	
DRAWN BY I. A. Kauffman	AUG. 1929
TRACED BY I. A. Kauffman	AUG. 1929
CHECKED BY R. G. Lunt	AUG. 1929
REVISED	
6-16-30	
C.S. INDEX MAP NO. 44	

A & I DISTRICT NO. 243
ISABEL AVENUE
CONDEMNATION MAP
SHEET NO. 1 OF 1 SHEET

A & I DISTRICT NO. 243
ISABEL AVENUE
CONDEMNATION MAP
SHEET NO. 1 OF 1 SHEET

C.F. 1852-