

Sht. 26
 Superior Court Case No. 312151
 Suit for Condemnation
 Filed Nov. 20th 1930
 County of Los Angeles, Pltff.
 Vs
 M. N. Avery et al., Defendants.
 Case dismissed Jan. 13, 1937

**STREET OPENING DISTRICT NO. 96
 OF THE COUNTY OF LOS ANGELES**
 FOR
 THE OPENING AND EXTENDING
 OF
NANCE STREET
 AND
 THE WIDENING OF
 WESTERN AVENUE

MAP SHOWING PROPERTY TO BE ACQUIRED AND DISTRICT TO BE BENEFITED, KNOWN AS THE "ASSESSMENT DISTRICT," TO BE ASSESSED FOR EXPENSES OF OPENING AND WIDENING PROPOSED; ALL IN ACCORDANCE WITH THE PROVISIONS OF THE COUNTY STREET OPENING ACT OF 1923, APPROVED MAY 11, 1923.
 SCALE: 1" = 50'. FEBRUARY, 1930.

J. E. ROCKHOLD — COUNTY SURVEYOR

SUBMITTED:
Alfred Jones
 ALFRED JONES,
 CHIEF DEPUTY

APPROVED:
J. E. Rockhold
 J. E. ROCKHOLD,
 COUNTY SURVEYOR

APPROVED AS TO FORM:
 EVERETT W. MATTOOK, COUNTY COUNSEL.

W. W. Cunningham
 W. W. CUNNINGHAM,
 DEPUTY COUNTY COUNSEL.

LEGEND

DISTRICT BOUNDARY SHOWN THUS: ————
 LAND IN WHICH AN EASEMENT IS SOUGHT TO BE ACQUIRED FOR PUBLIC HIGHWAY PURPOSES, SHOWN IN RED.
 NUMBERS IN CIRCLES INDICATE PARCELS SOUGHT TO BE CONDEMNED.
 FIGURES SHOWN IN PARENTHESES () ARE EITHER RECORD DISTANCES OR ARE CALCULATED FROM RECORD DISTANCES.
 FIGURES SHOWN THUS:
 0.000 INDICATE AREA TO BE ACQUIRED, IN SQUARE FEET.
 00,000 INDICATE AREA OF HOLDING, INCLUDING AREA TO BE ACQUIRED, IN SQUARE FEET.

SCALE: 1" = 50'

C.F. 1853-

S.O. DISTRICT NO. 96	
SHEET NO. 1 OF 1 SHEET	
DRAWN BY	W. W. CUNNINGHAM JAN. 1930
TRACED BY	W. W. CUNNINGHAM JAN. 1930
CHECKED BY	J. H. MURPHY FEB. 1930
	REVISED
C.S. INDEX MAP NO. 26	



66
DONALD

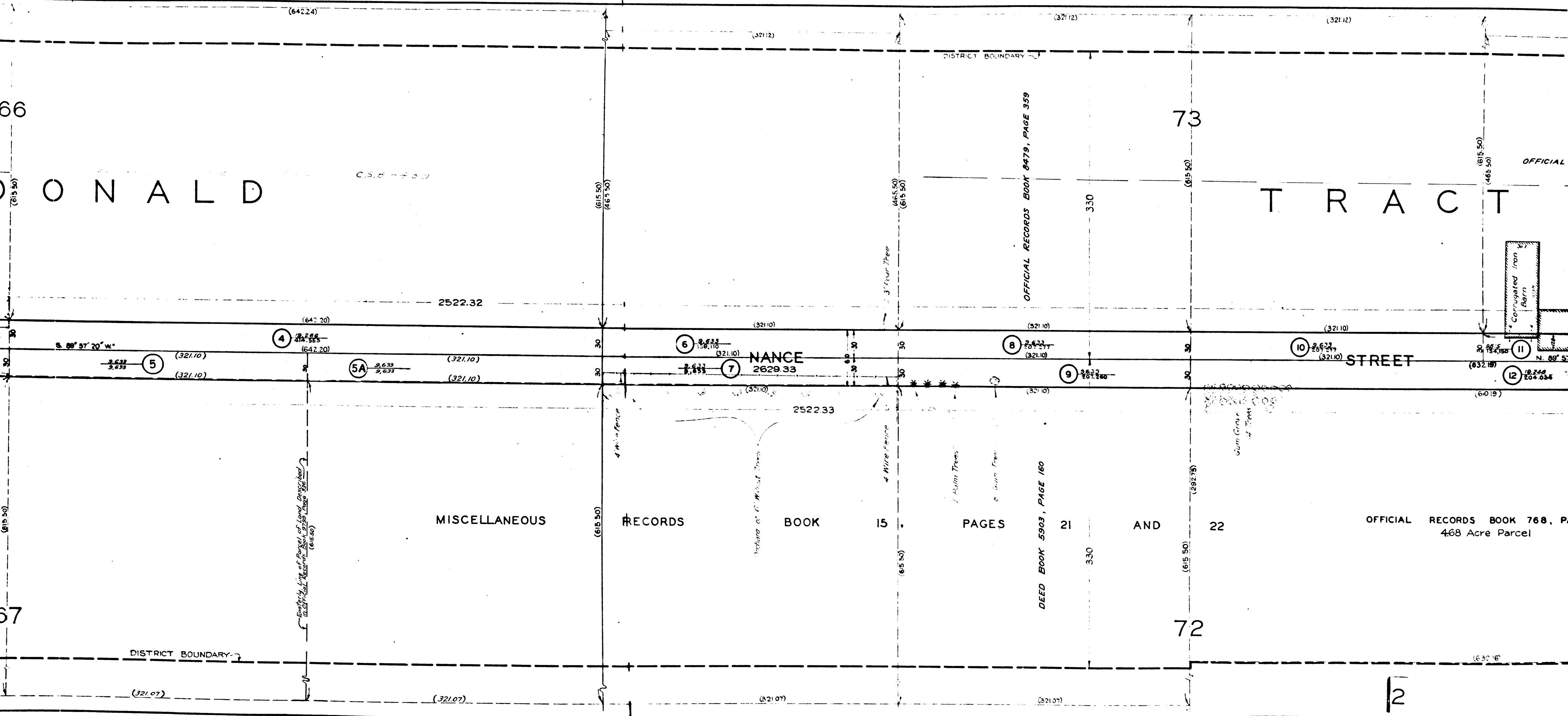
73
TRACT

2522.32
NANCE STREET
2522.33
CORRUGATED IRON BARN

MISCELLANEOUS RECORDS BOOK 15 PAGES AND 22
OFFICIAL RECORDS BOOK 768, PAGE 468 Acre Parcel

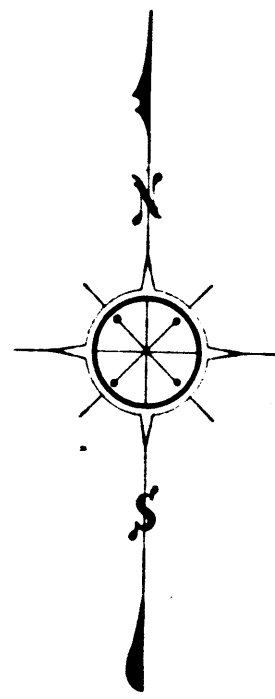
OFFICIAL RECORDS BOOK 8479, PAGE 359

DEED BOOK 5903, PAGE 160

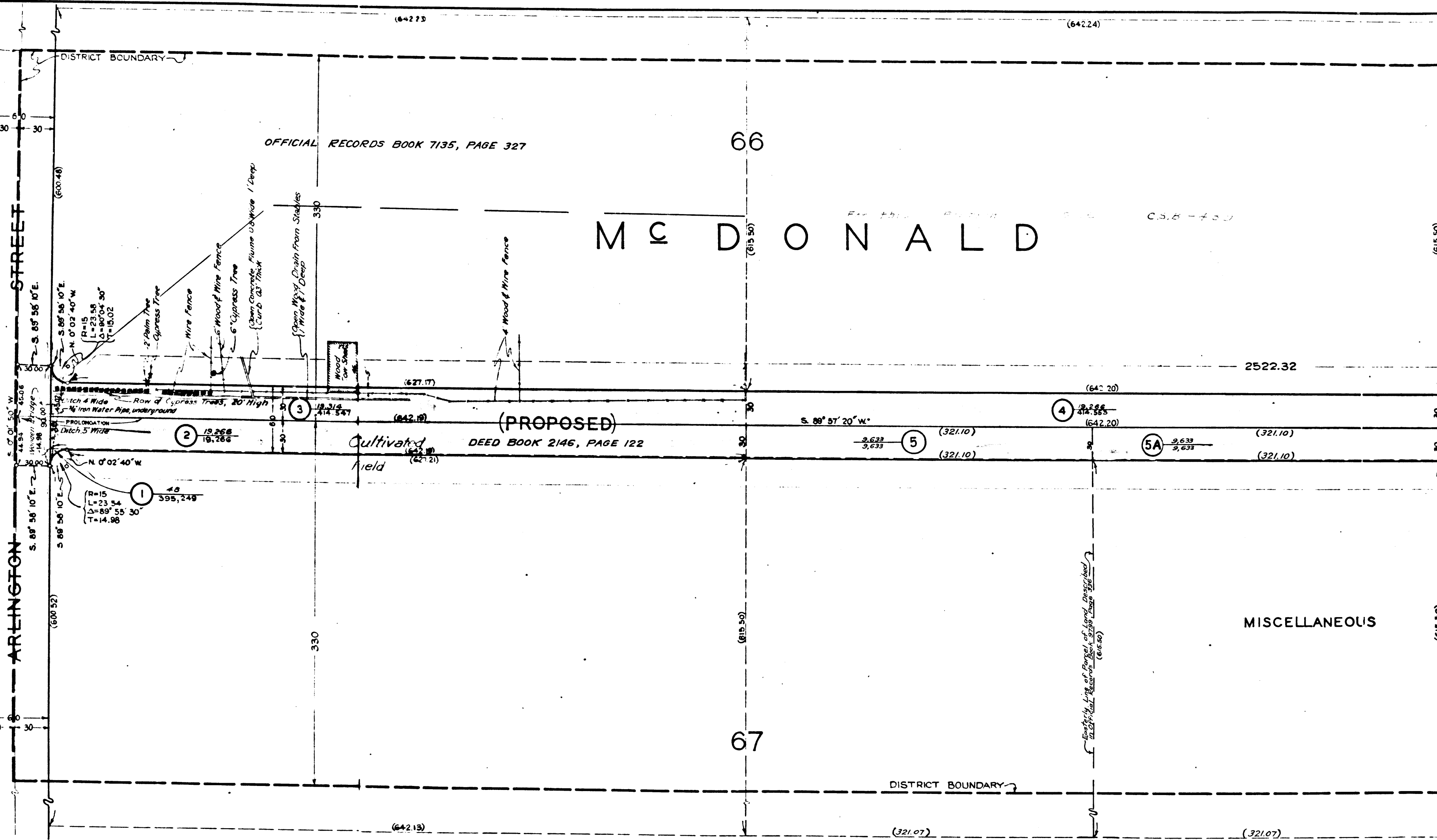


12
C.F. 1853-

POINT OF BEGINNING



SCALE: 1:50



3
C.F. 1853-