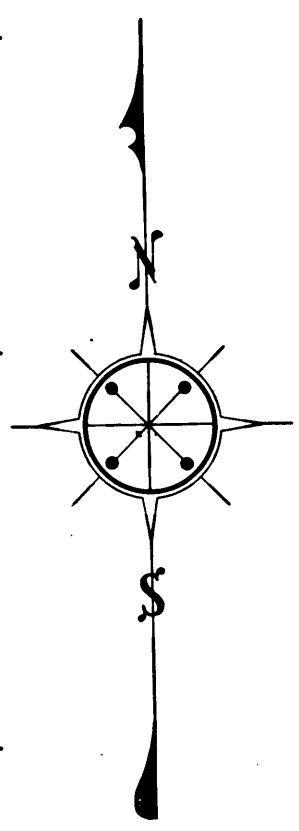
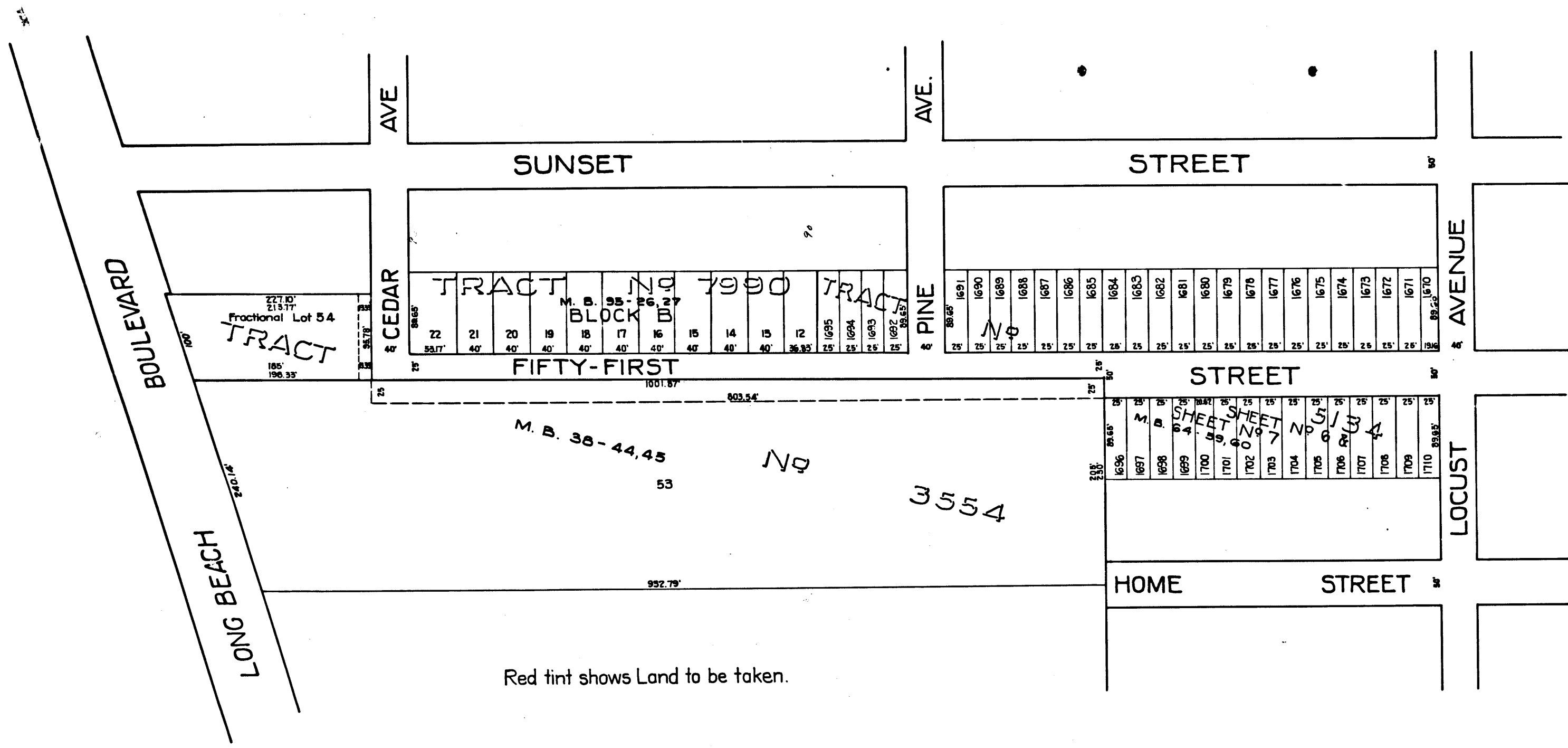


5h  
A-

EXHIBIT "C"

Sht. 30  
 Superior Court Case No. LBC-3786  
 Suit for Condemnation  
 Filed Dec. 18, 1930  
 City of Long Beach, Plfff.,  
 Vs.  
 R. William Mackie et. al., Def.  
*Interlocutory judgment as per  
 map, rendered Nov. 16<sup>th</sup> 1931.  
 Judg. BK. 793-100.*  
*Case Dismissed as to all Def. 10-23-44*



Scale: 1" = 100'

Red tint shows Land to be taken.

C.	F.	1	8	5	7	-
----	----	---	---	---	---	---