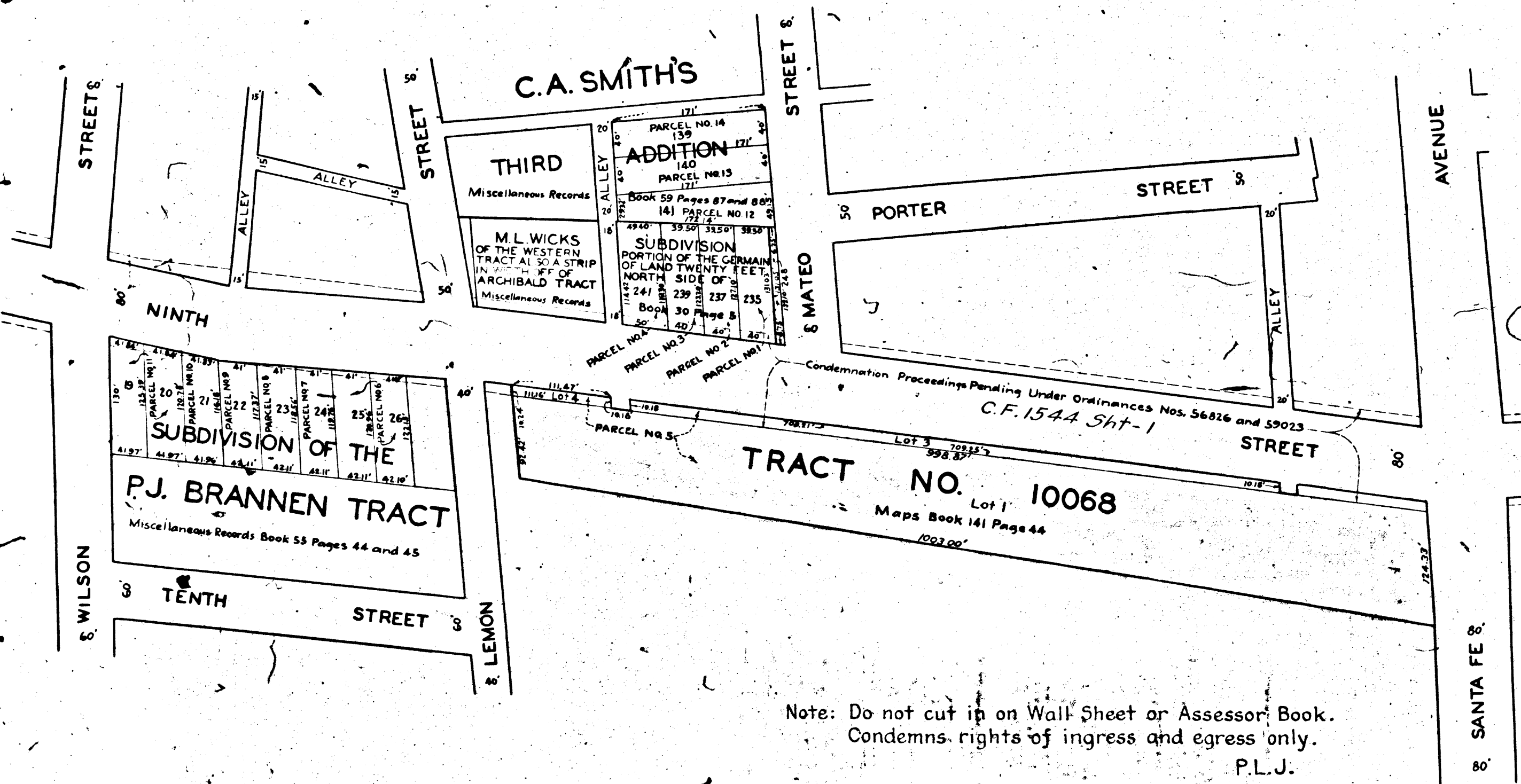


MAP
SHOWING CERTAIN REAL PROPERTY
LYING ALONG AND ADJACENT TO
NINTH STREET
BETWEEN
SANTA FE AVENUE
AND
WILSON STREET
TO AND FROM WHICH RIGHTS OF INGRESS AND EGRESS
ARE TO BE CONDEMNED FOR
PUBLIC GRADE SEPARATION PURPOSES
IN THE
CITY OF LOS ANGELES CAL.
IN ACCORDANCE WITH ORDINANCE NO. 88501
J.J. JESSUP CITY ENGINEER DECEMBER 1930
SCALE 1 INCH=100 FEET

NOTE: Real property to which rights of ingress and egress are to be
condemned shown colored red.

Superior Court Case No. 315204
Suit for Condemnation
Filed Jan. 24, 1931
City of Los Angeles, Plaintiff,
vs.
Alice J. Gastren, et al., Def.
Proceedings abandoned Jan.
14, 1931



Note: Do not cut in on Wall Sheet or Assessor Book.
Condemns rights of ingress and egress only.
P.L.J.