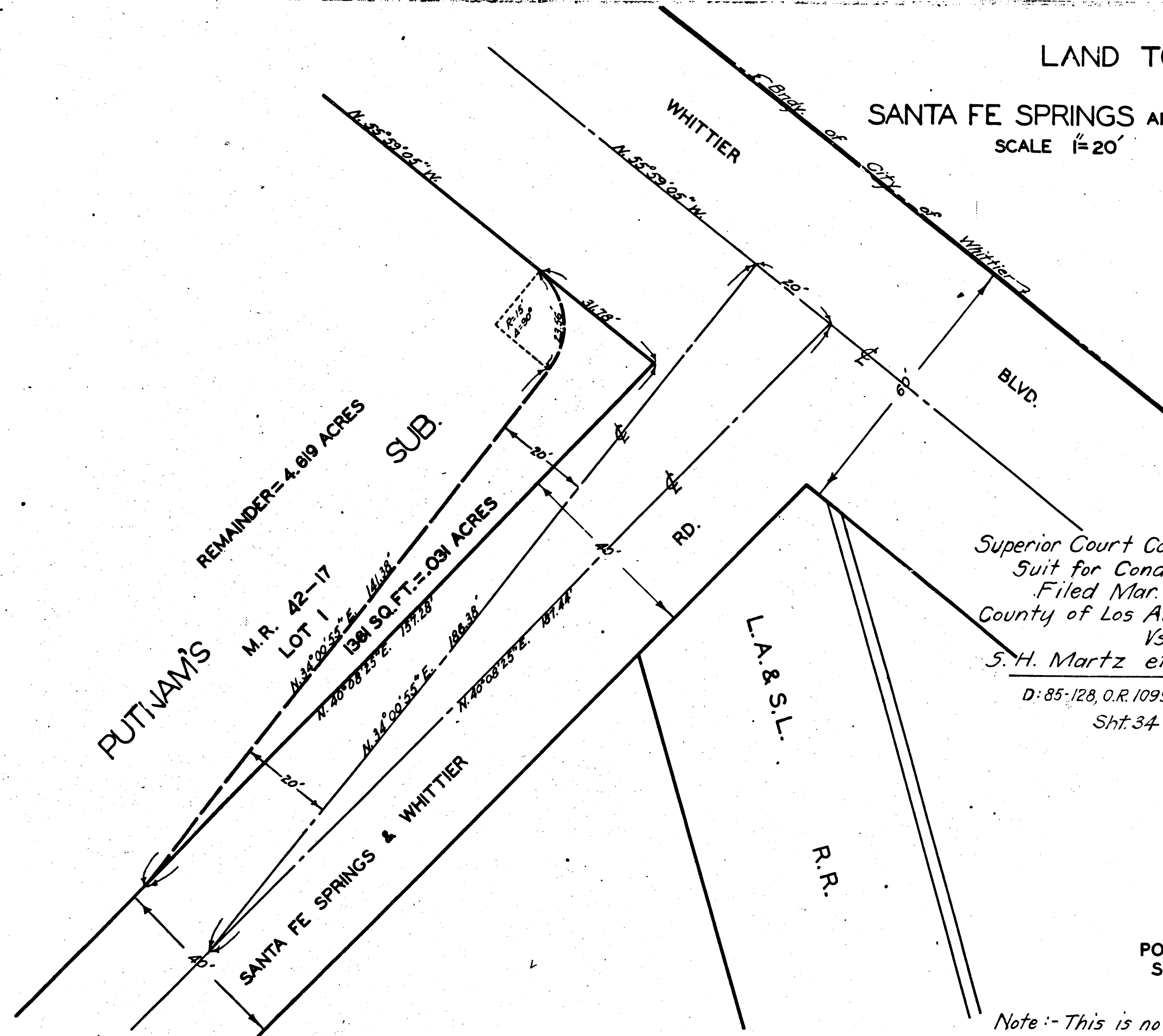
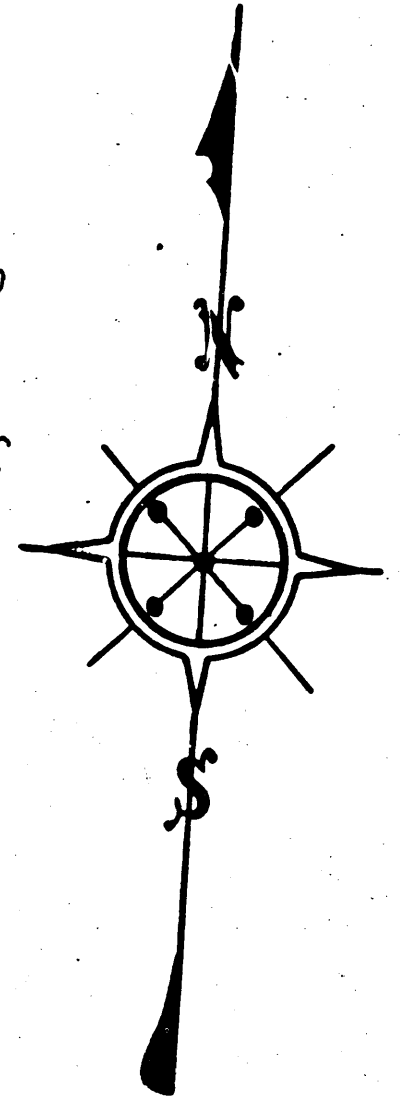


MAP SHOWING
 LAND TO BE CONDEMNED
 FOR
 SANTA FE SPRINGS AND WHITTIER ROAD ①
 SCALE 1"=20'
 DEC. 18, 1930.



Superior Court Case No. 318380
 Suit for Condemnation
 Filed Mar. 21st 1931
 County of Los Angeles, Plff.
 Vs
 S. H. Martz et al., Def.
 D: 85-128, O.R. 10997-180
 Sht. 34



LEGEND
 PORTION TO BE CONDEMNED
 SHOWN COLORED RED.

Note:- This is not an exact copy of the map filed in this Case.

C.F. 1873 -

10TH 957 10TH 957