

NINETY-EIGHTH ST.-MCKINLEY AVE. TO AVALON B. D.  
FILE NO. 583-31 CHARGE NO. 97487

*Superior Court Cause No. 31887  
Suit for Condemnation  
Filed March 27, 1931  
City of Los Angeles vs.  
Security 1st National Bank A. L.  
Corner corner in  
1928 1175 1/2  
1928 1175 1/2  
1928 1175 1/2  
1928 1175 1/2  
1928 1175 1/2  
1928 1175 1/2*

BOULEVARD 8'

AVALON 8'

STANFORD AVENUE 60'

AVENUE 60'

MCKINLEY 30'

NINETY-EIGHTH STREET

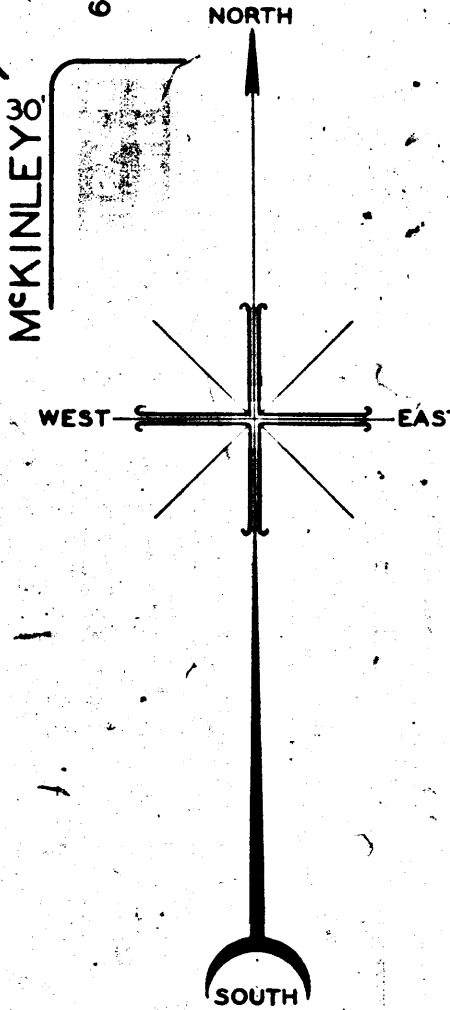
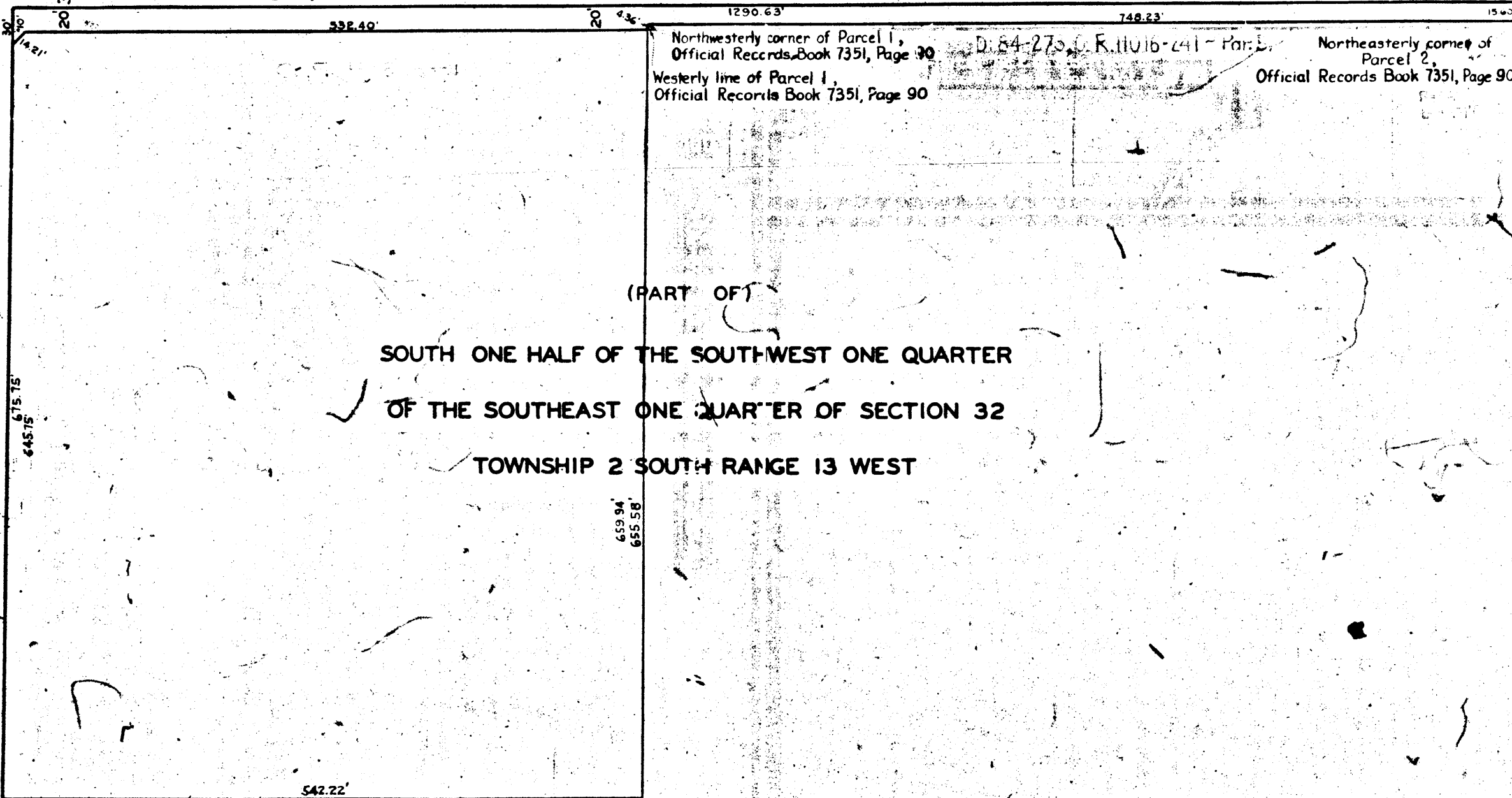
STREET

80.5'

80'

60'

70'



MAP  
SHOWING THE  
LAND TO BE CONDEMNED  
FOR THE  
WIDENING AND LAYING OUT OF  
NINETY-EIGHTH STREET  
ADJACENT TO THE SOUTHERLY LINE THEREOF  
FROM  
MCKINLEY AVENUE  
TO  
AVALON BOULEVARD  
IN THE CITY OF LOS ANGELES, CALIF.  
IN ACCORDANCE WITH ORDINANCE NO. 69049  
J. J. JESSUP, CITY ENGINEER MARCH, 1931  
SCALE 1 INCH = 100 FEET

NOTE  
LAND TO BE CONDEMNED SHOWN COLORED RED  
A-6074

A-6074

A-6074

A-6074

A-6074

A-6074