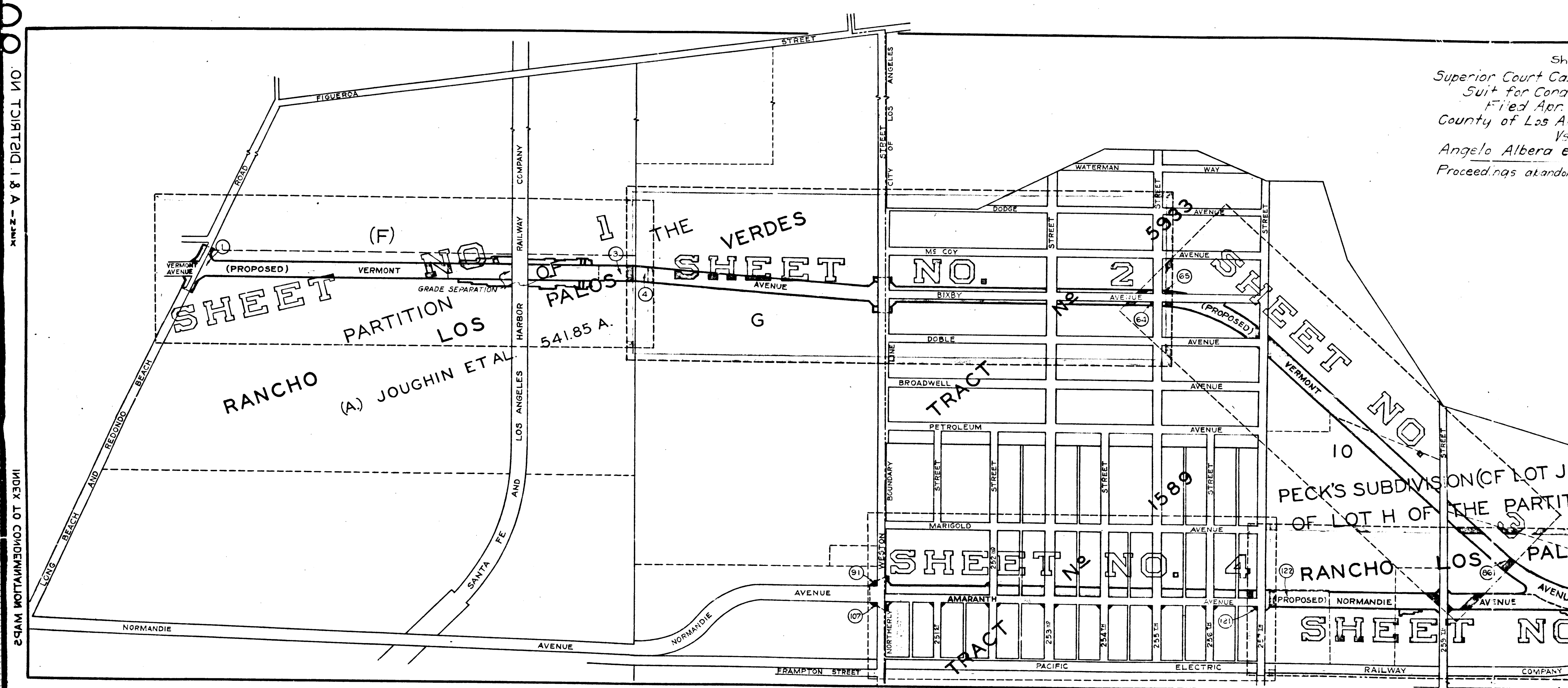


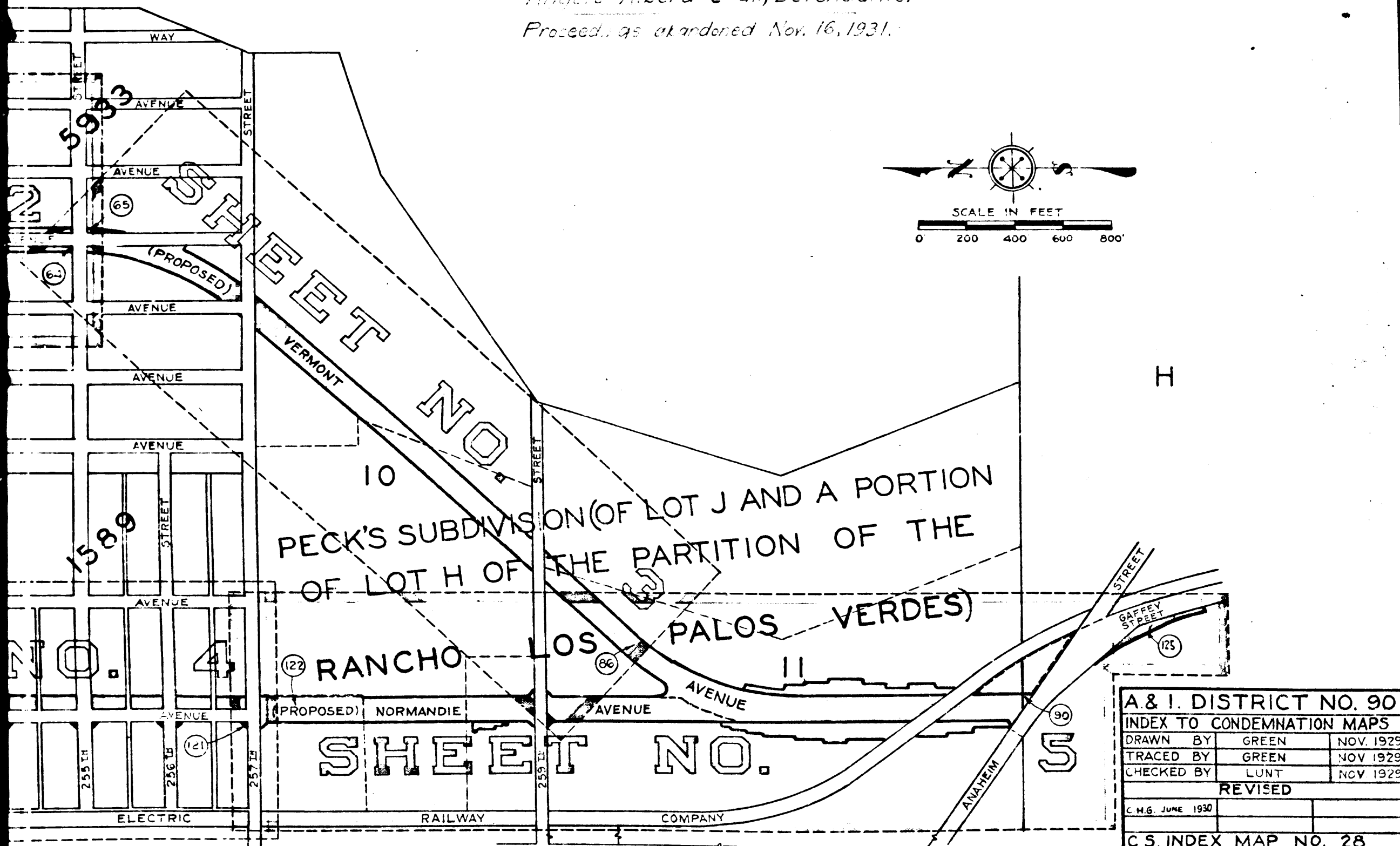
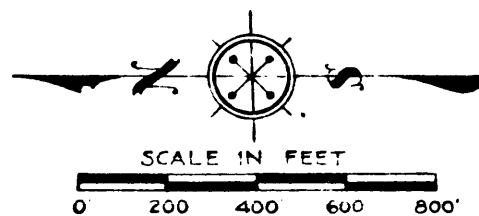
Sht.  
Superior Court Case  
Suit for Condemnation  
Filed Apr. 2  
County of Los Angeles  
Vs.  
Angelo Albera et al.  
Proceedings abandoned



INDEX TO CONDEMNATION MAPS  
ON TIRTSIG 1 & A - ZANK  
957  
MEMCO  
10TH

C.F. 1882 -

Sht. 28  
 Superior Court Case No. 320527  
 Suit for Condemnation  
 Filed Apr. 28<sup>th</sup> 1931  
 County of Los Angeles, Pltff.  
 Vs  
 Anacle Albera et al, Defendants.  
 Proceed. as abandoned Nov. 16, 1931.



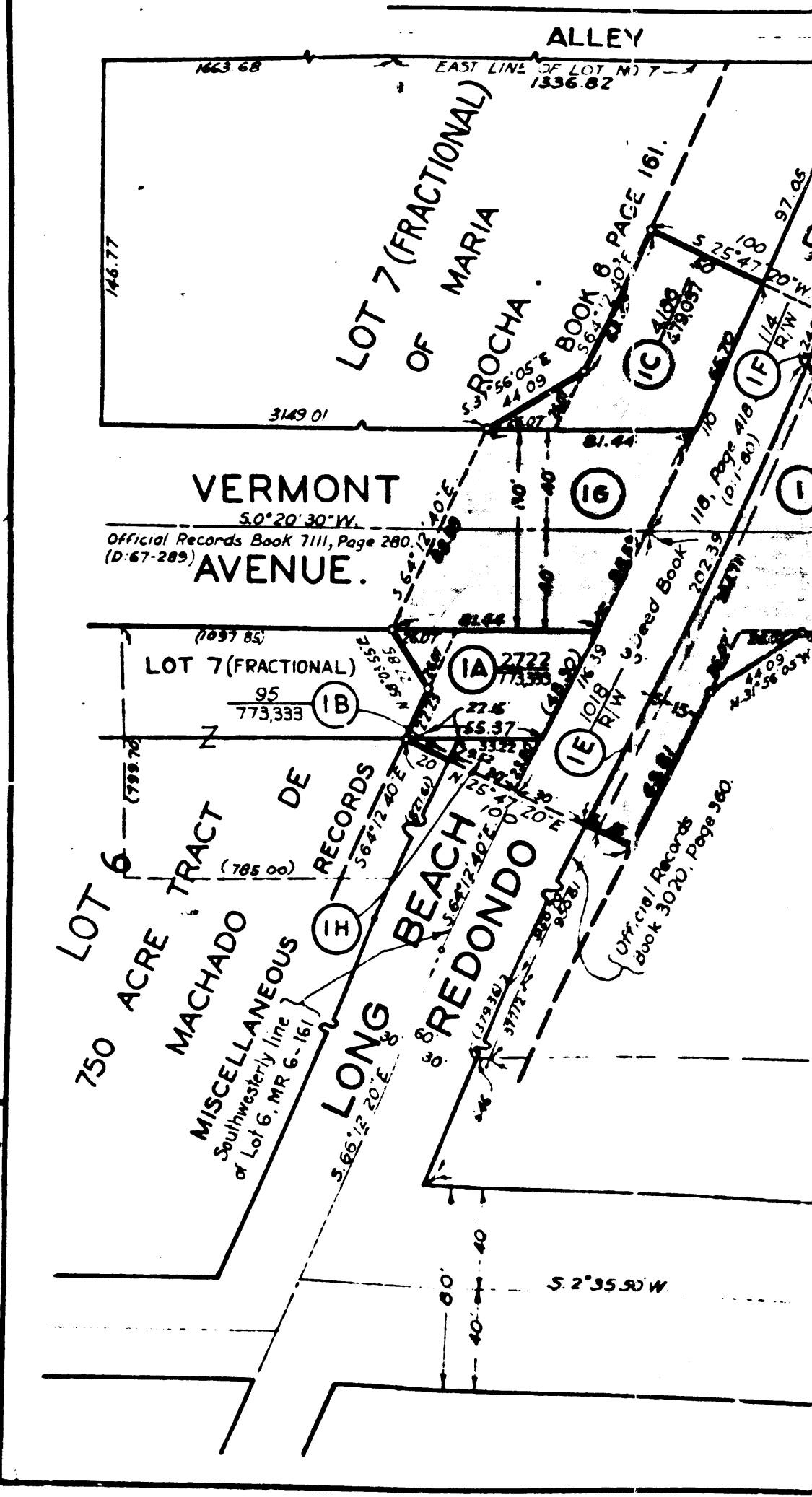
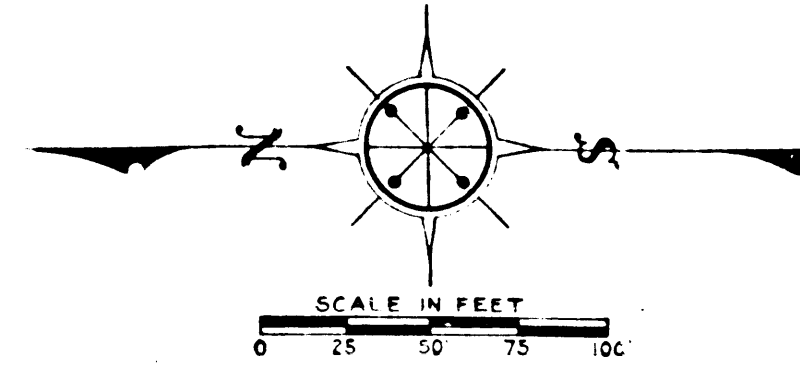
A & I. DISTRICT NO. 90		
INDEX TO CONDEMNATION MAPS		
DRAWN BY	GREEN	NOV. 1929
TRACED BY	GREEN	NOV. 1929
CHECKED BY	LUNT	NOV. 1929
REVISED		
C.M.G. JUNE 1930		
C.S. INDEX MAP NO. 28		

ON TRIPTSD I & A  
 DIMA EVA TIOMIYEV  
 EBA EIDIAMRON  
 OT XED

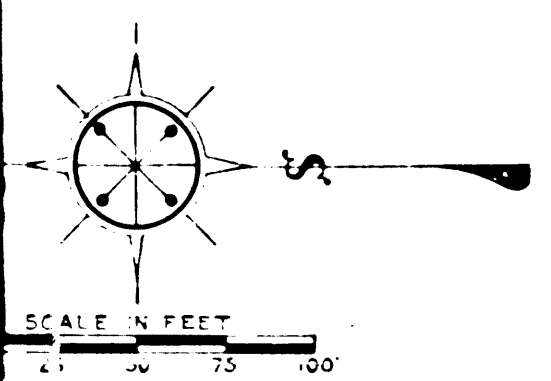
INDEX TO CONDEMNATION MAPS  
 NORMANDIE AVE  
 VERMONT AVE AND  
 A & I. DISTRICT NO.

C.F. 1882

A. & I. DISTRICT NO. 90  
 VERMONT AVENUE  
 CONDEMNATION MAP  
 SHEET NO. 1 OF 5 SHEETS



A. & I. DISTRICT NO. 90  
 VERMONT AVENUE  
 CONDEMNATION MAP  
 SHEET NO. 1 OF 5 SHEETS



FIGUEROA STREET

BEACH AND ROADS

PARTITION

(F)  
(FRACTIONAL)  
JOUGHIN  
541.  
SUPERIOR COURT C  
(L. S

ALLEY

(FRACTIONAL)  
OF MARIA  
ROCHA

BEACH  
REDONDO

RANCHO

NORMANDIE AVENUE

(PROPOSED)

VERMONT

SUPERIOR

3

C.F. 1882 -

S. 7° 10' 10" E.

S. 64° 12' 40" E.

S. 50° 23' 55" W.

S. 75° 47' 20" W.

S. 50° 23' 55" W.

S. 75° 47' 20" W.

S. 75° 47' 20" W.

S. 75° 47' 20" W.

S. 75° 47' 20" W.

S. 75° 47' 20" W.

S. 2° 35' 50" W.

1996.66

S. 0° 12' 20" W.

Easterly line of Assignment as per Official Records Book 4014, Page 104.

16.033  
1438.81

AREA = 47,009

2788.81

S. 0° 20' 30" W.

S. 0° 20' 30" W.

115.12  
5,285.76

1648.38

2823.83

AREA = 3,042,040<sup>sq</sup>

S. 0° 12' 20" W.

2685.11

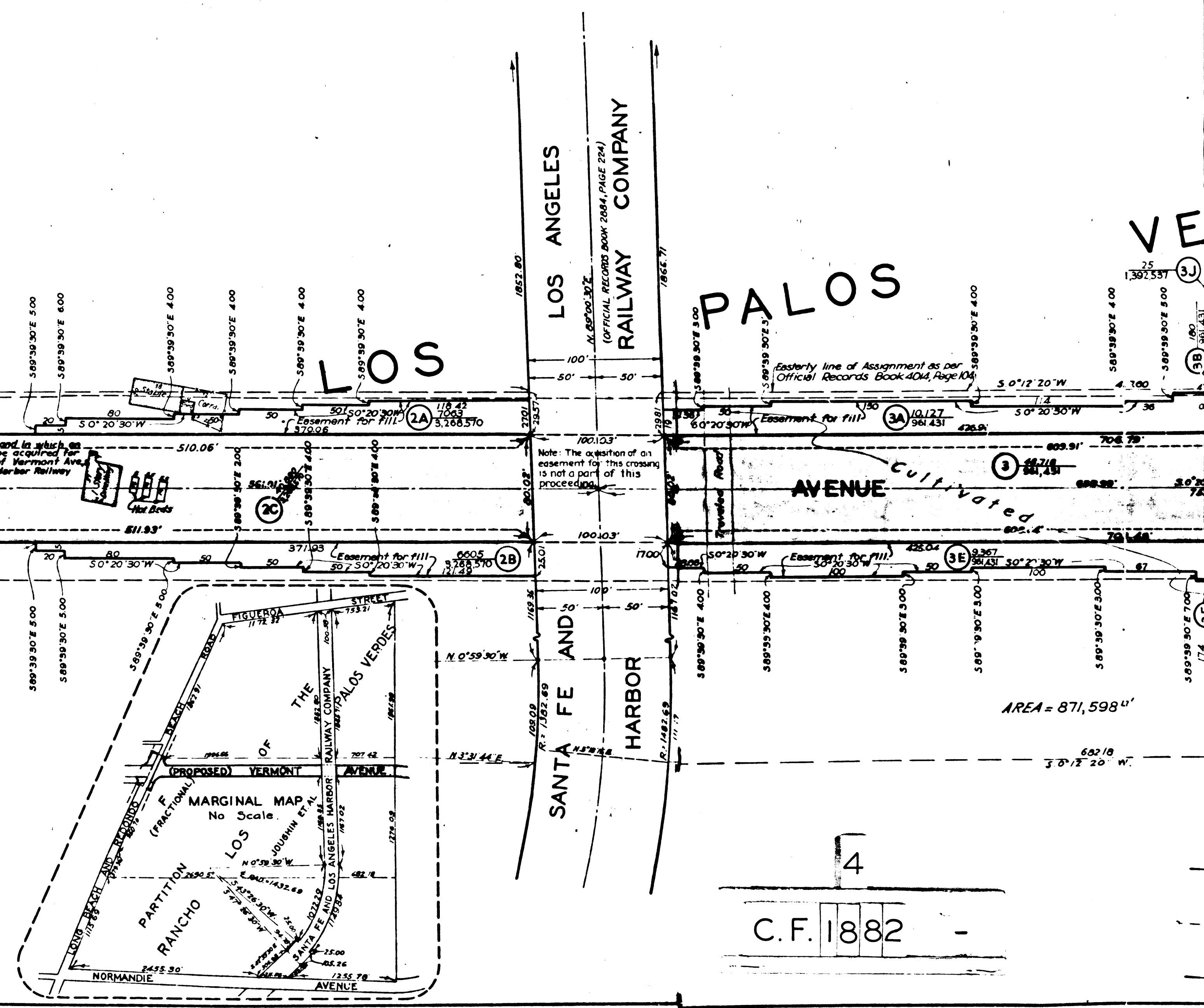
(F)  
 (FRACTIONAL)  
 JOUGHIN, ET. AL.  
 541.85 A.  
 SUPERIOR COURT CASE NO. 19566  
 (L.S. 2-37)

OF THE LOS PALOS VERDES

VERMONT

AVENUE CultiVated

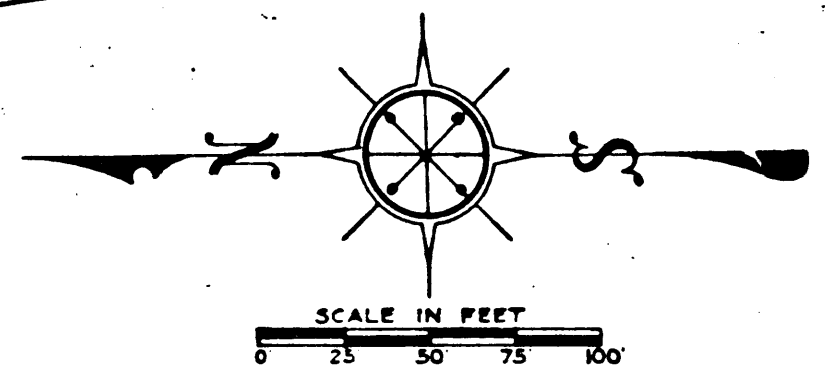
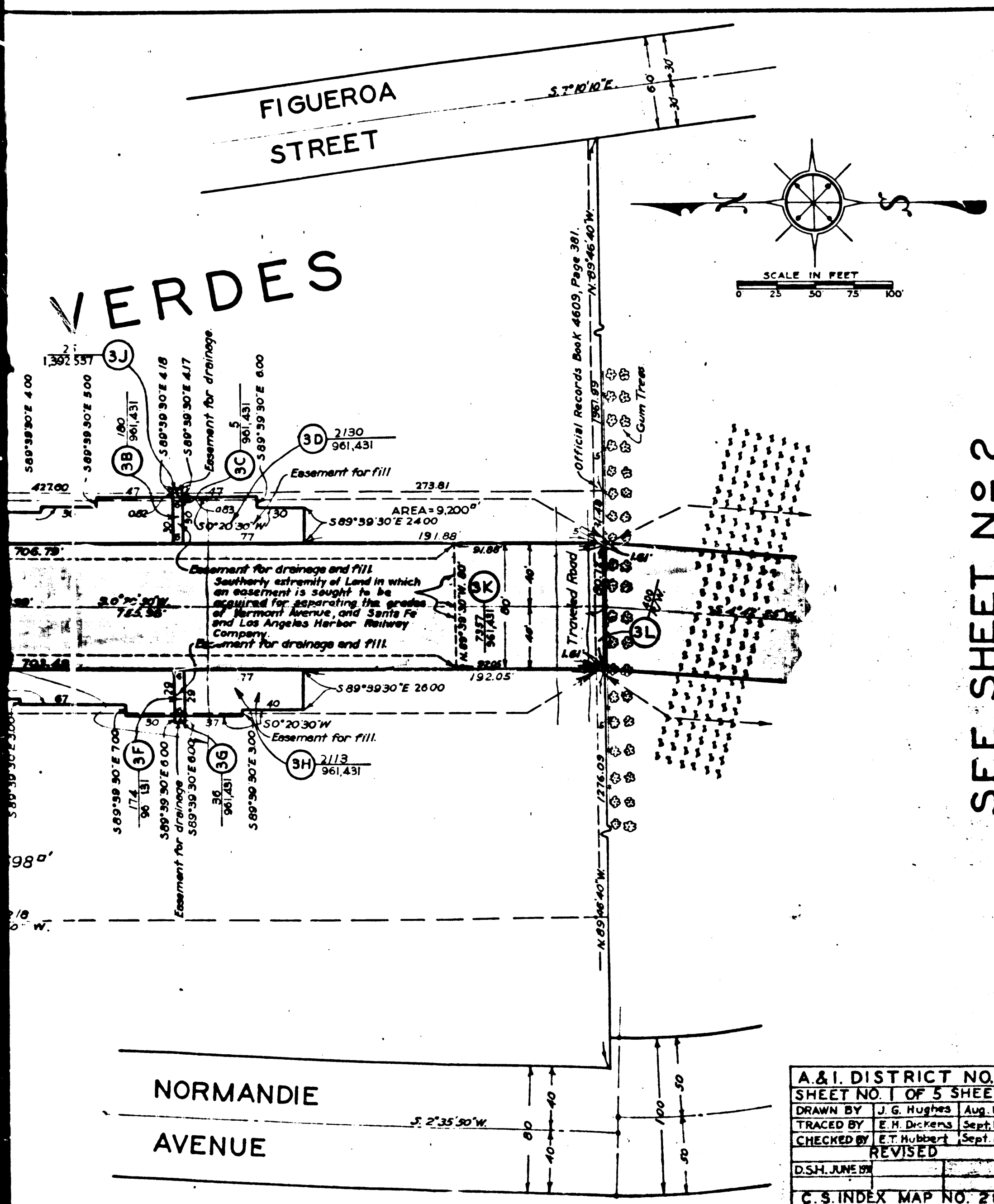
SUPERIOR COURT CASE No 2373.  
 (C.F. 41.)



AREA = 871,598<sup>sq</sup> ft

4  
 C.F. 1882

VERDES

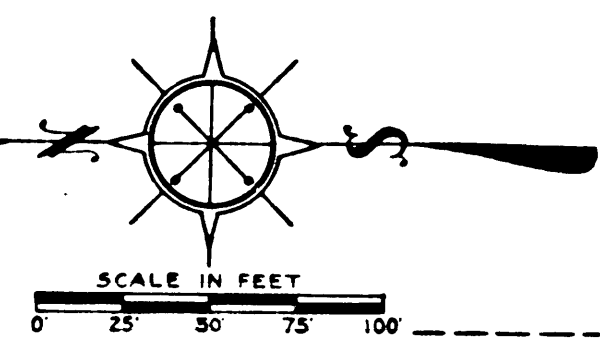
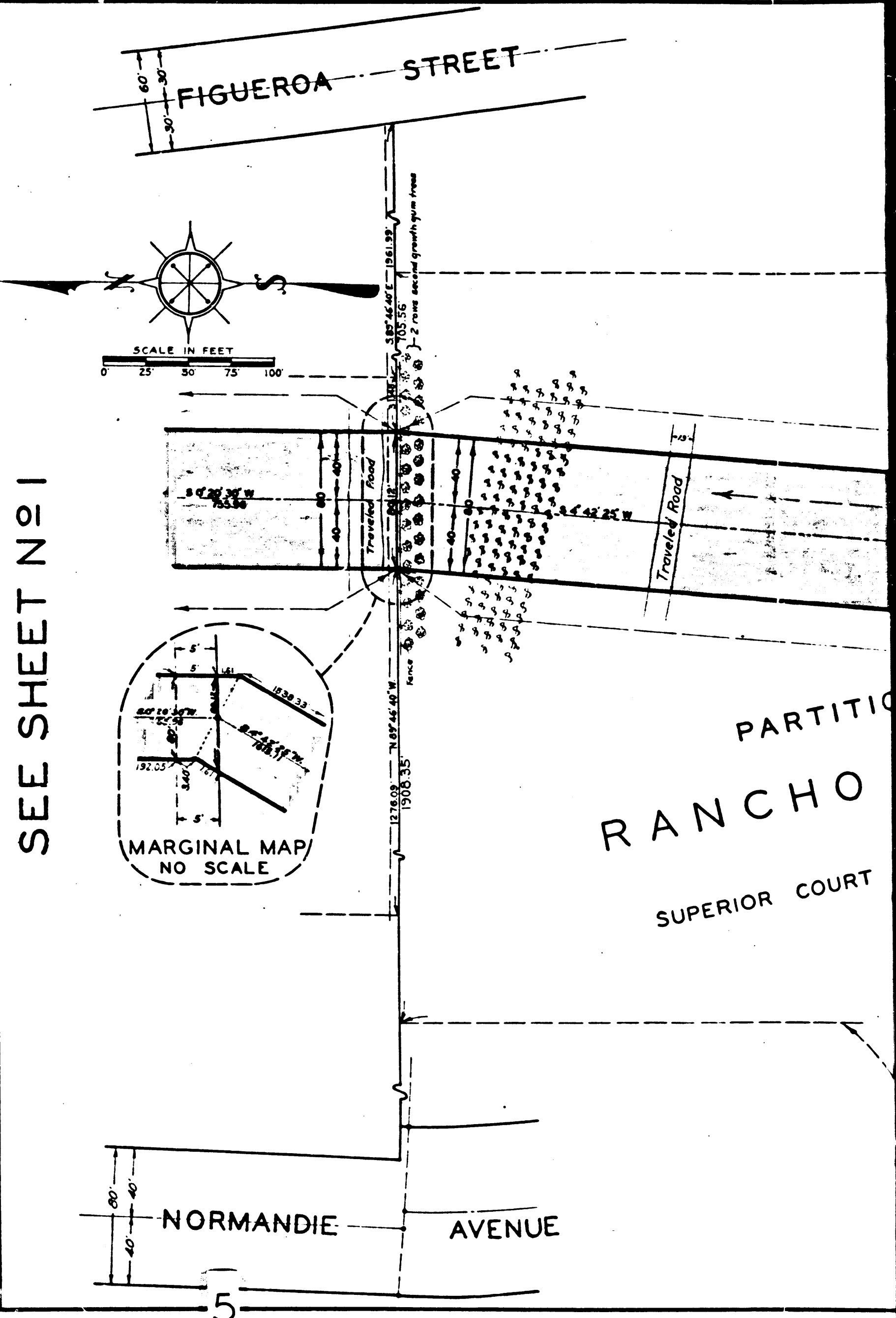


SEE SHEET NO 2

A. & I. DISTRICT NO. 90		
SHEET NO. 1 OF 5 SHEETS		
DRAWN BY	J. G. Hughes	Aug. 1929
TRACED BY	E. H. Dickens	Sept. 1929
CHECKED BY	E. T. Hubbert	Sept. 1929
REVISED		
D.S.H. JUNE 27		
C. S. INDEX MAP NO. 28		

A. & I. DISTRICT NO. 90  
VERMONT AVENUE  
CONDEMNATION MAP  
SHEET NO. 1 OF 5 SHEETS

A. & I. DISTRICT NO. 90  
VERMONT AVENUE  
CONDEMNATION MAP  
SHEET NO. 1 OF 5 SHEETS



SEE SHEET NO 1

A. & I. DISTRICT NO. 90  
VERMONT AVENUE  
CONDEMNATION MAP  
SHEET NO. 2 OF 5 SHEETS

A. & I. DISTRICT NO. 90  
VERMONT AVENUE  
CONDEMNATION MAP  
SHEET NO. 2 OF 5 SHEETS

C.F. 1882

FIGUEROA

STREET

N 0° 15' 20" E. (900)

S 7° 10' 10" E

541.85

149.76

AREA = 2,208,257"

G (FRACTIONAL)

OF PALOS THE VERDES (C.F. 41)

Grape Vineyard (PROPOSED)

Grape Vineyard

VERMONT

AVENUE

122.601  
6,222,880

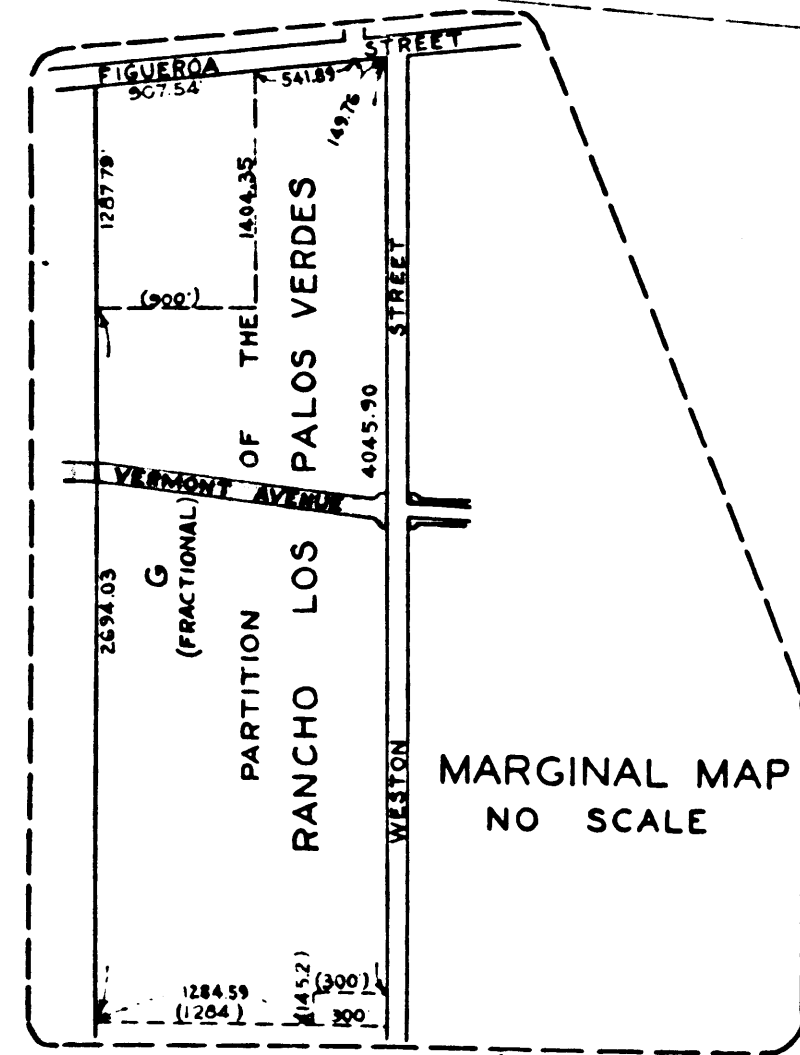
D:23-160, O.R. 11209-279  
D:23-162, O.R. 11327-45

PARTITION LOS ANCHO SUPERIOR COURT CASE No 2373

AREA = 2,882,720"

OFFICIAL RECORDS BOOK 1021, PAGE 131

D:23-160, O.R. 11209-279  
D:23-162, O.R. 11327-45



MARGINAL MAP NO SCALE

6

128 59  
N 0° 21' 25" E

N 0° 21' 25" E. (300)

(1452)  
S 89° 45' 35" E.

(300)  
N 0° 21' 25" E.

C.F. 1882

STREET

STREET

STREET

253 RD.

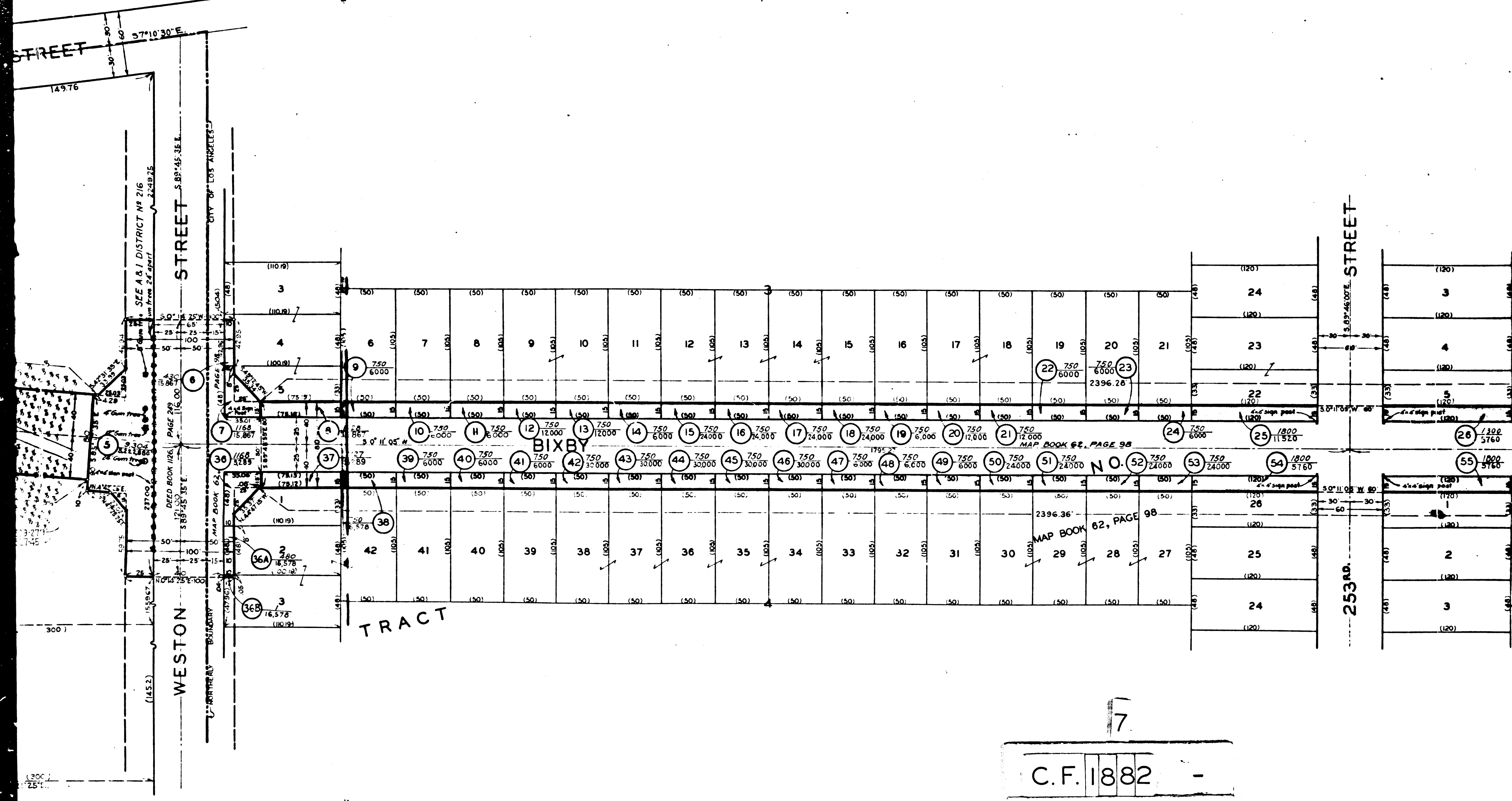
WESTON

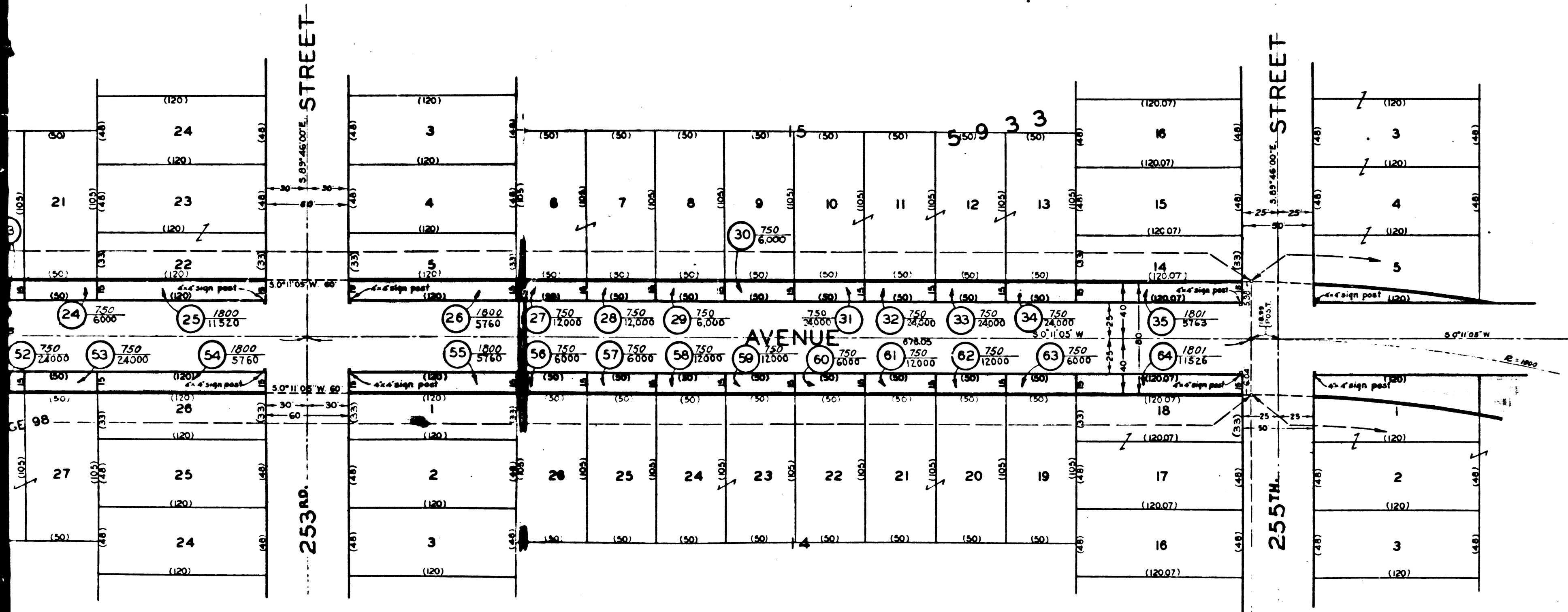
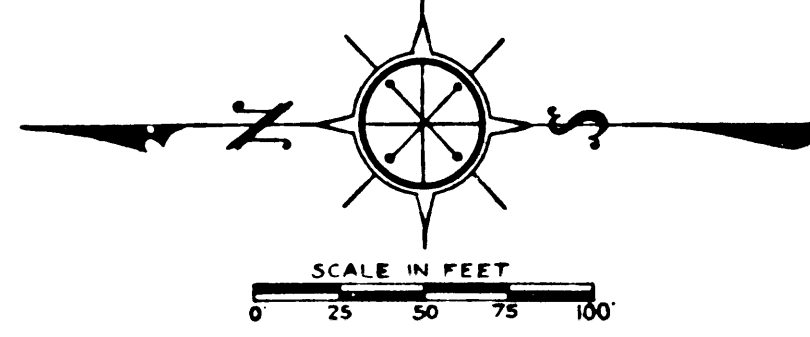
TRACT

BIXBY

NO. 52

C.F. 1882





SEE SHEET N<sup>o</sup> 3

C.F. 1882

A.&I. DISTRICT NO. 90	
SHEET NO. 2 OF 5 SHEETS	
DRAWN BY	HUGHES SEPT 1929
TRACED BY	HUBBERT OCT. 1929
CHECKED BY	GREEN NOV 1929
REVISED	
S. S. June 1930	
Dec 1930	
C. S. INDEX MAP NO. 28	

A. & I. DISTRICT NO. 90  
VERMONT AVENUE  
CONDEMNATION MAP  
SHEET NO. 2 OF 5 SHEETS

A. & I. DISTRICT NO. 90  
VERMONT AVENUE  
CONDEMNATION MAP  
SHEET NO. 2 OF 5 SHEETS

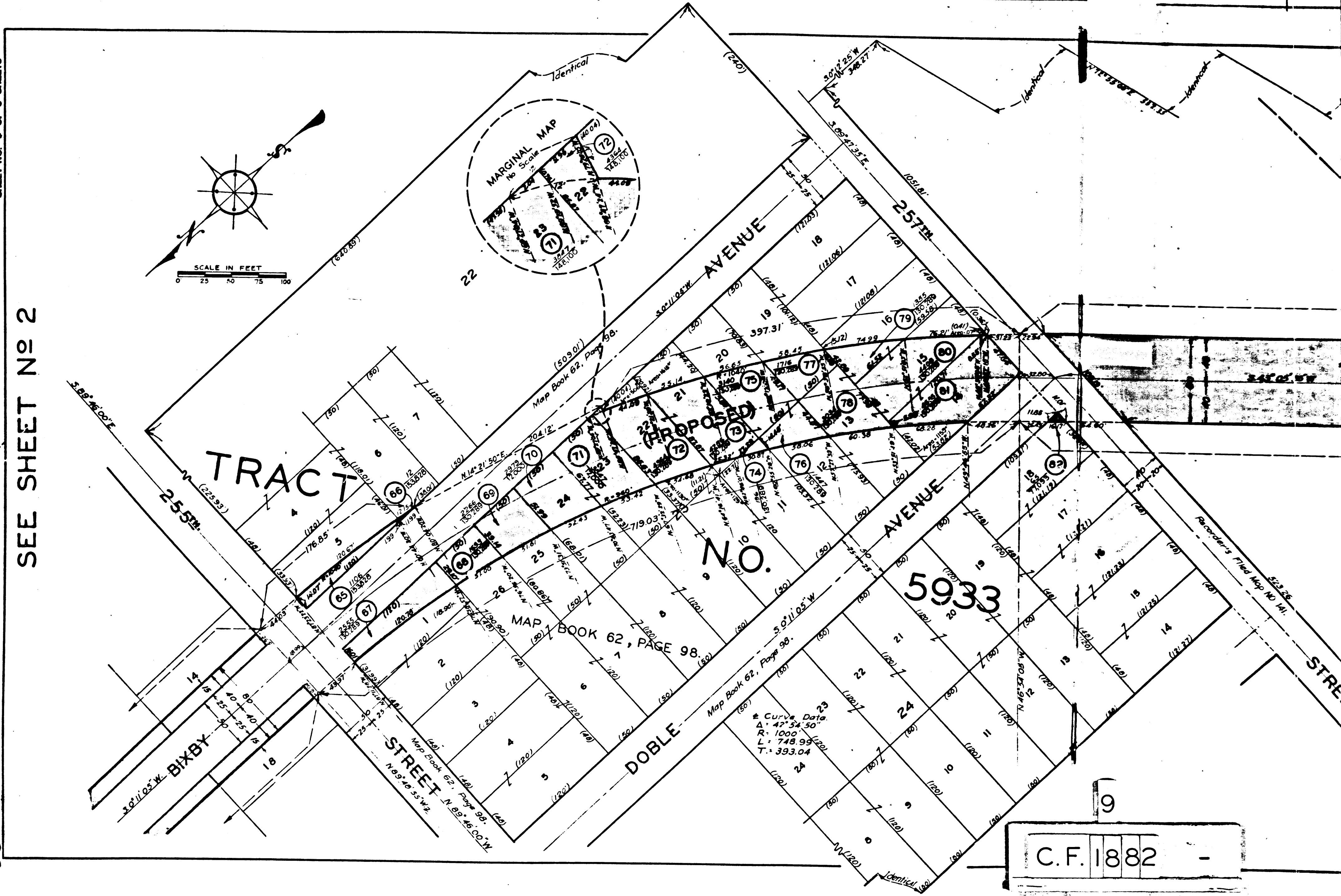
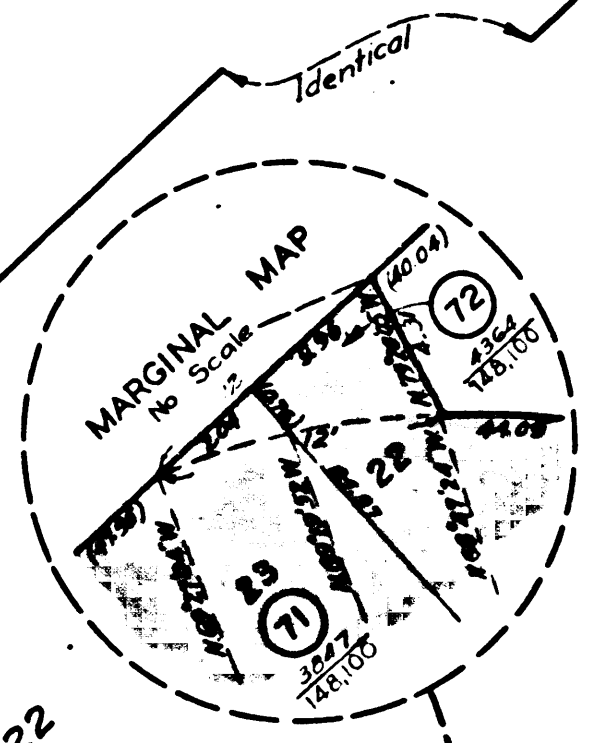
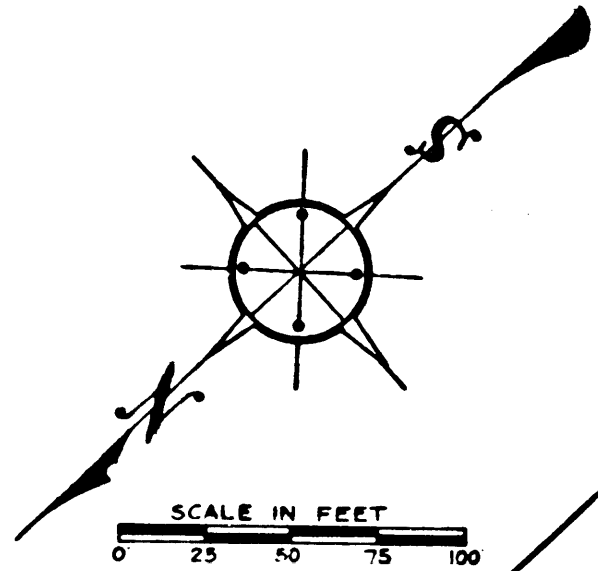


A. & I. DISTRICT NO. 90  
VERMONT AVENUE  
CONDEMNATION MAP  
SHEET NO. 3 OF 5 SHEETS

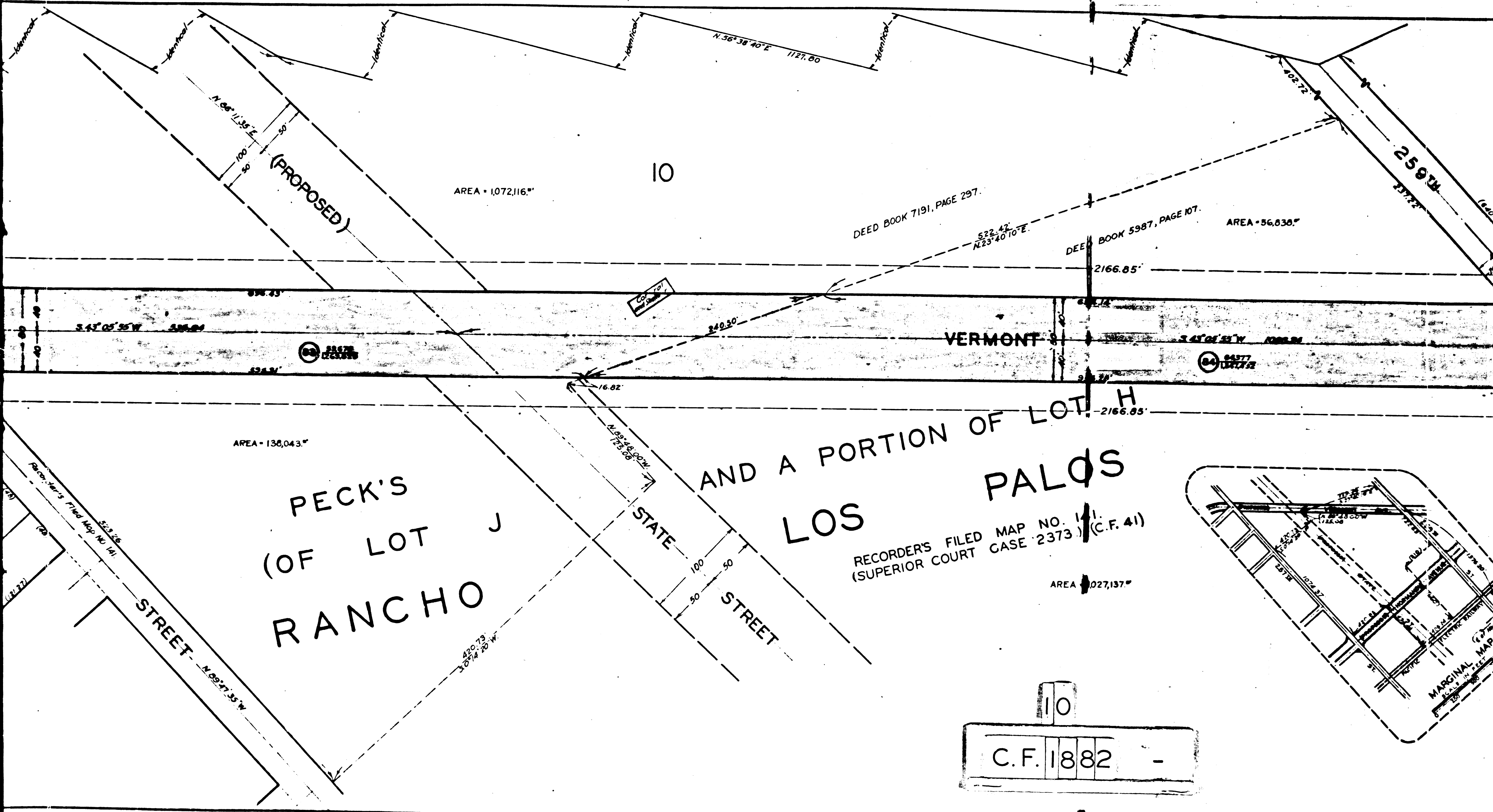
3

SEE SHEET NO 2

A. & I. DISTRICT NO. 90  
VERMONT AVENUE  
CONDEMNATION MAP  
SHEET NO. 3 OF 5 SHEETS



9  
C.F. 1882



10

AREA = 1,072,116"

(PROPOSED)

DEED BOOK 7191, PAGE 297.

DEED BOOK 5987, PAGE 107.

AREA = 56,836"

VERMONT

AREA = 138,043"

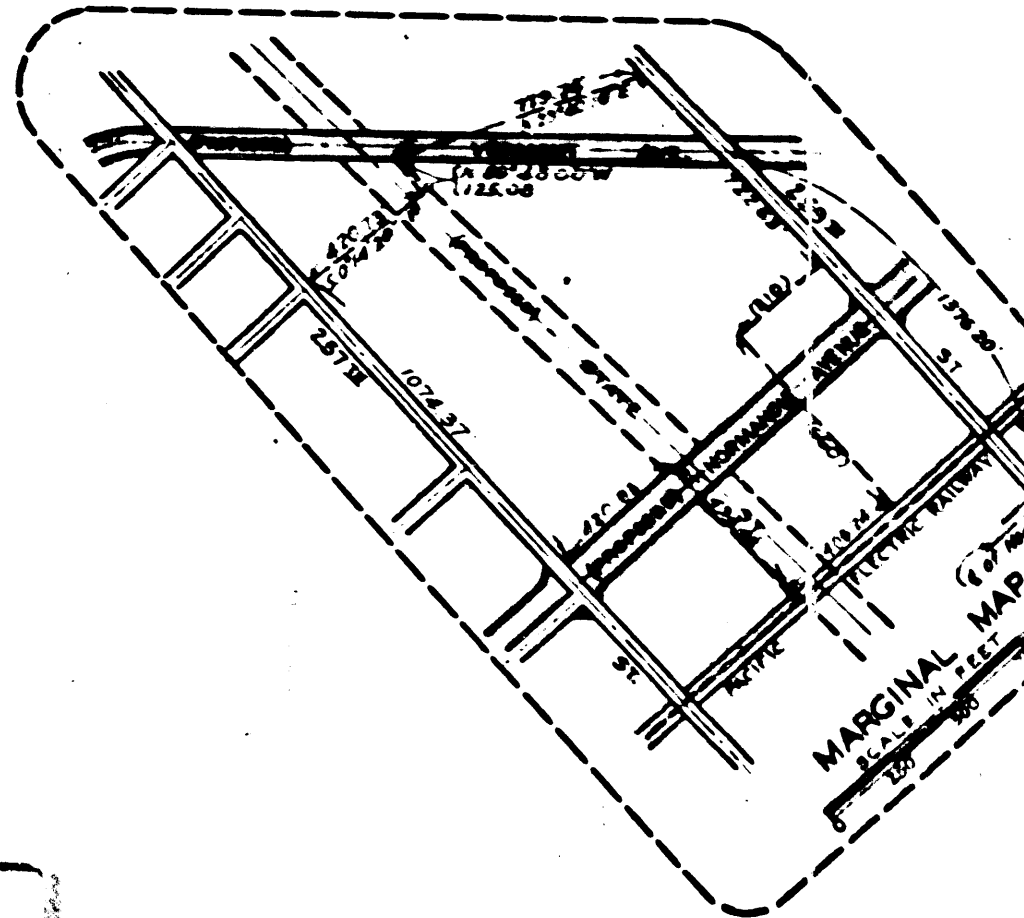
PECK'S  
(OF LOT J)  
RANCHO

STATE STREET

AND A PORTION OF LOT H  
LOS PALOS

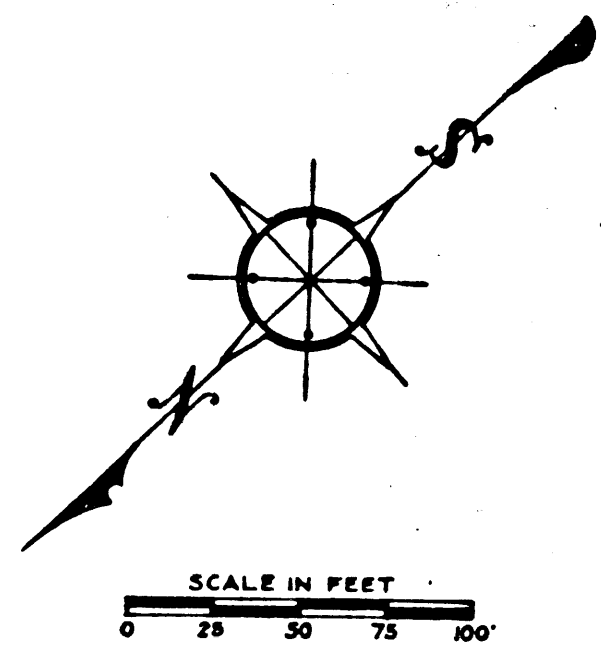
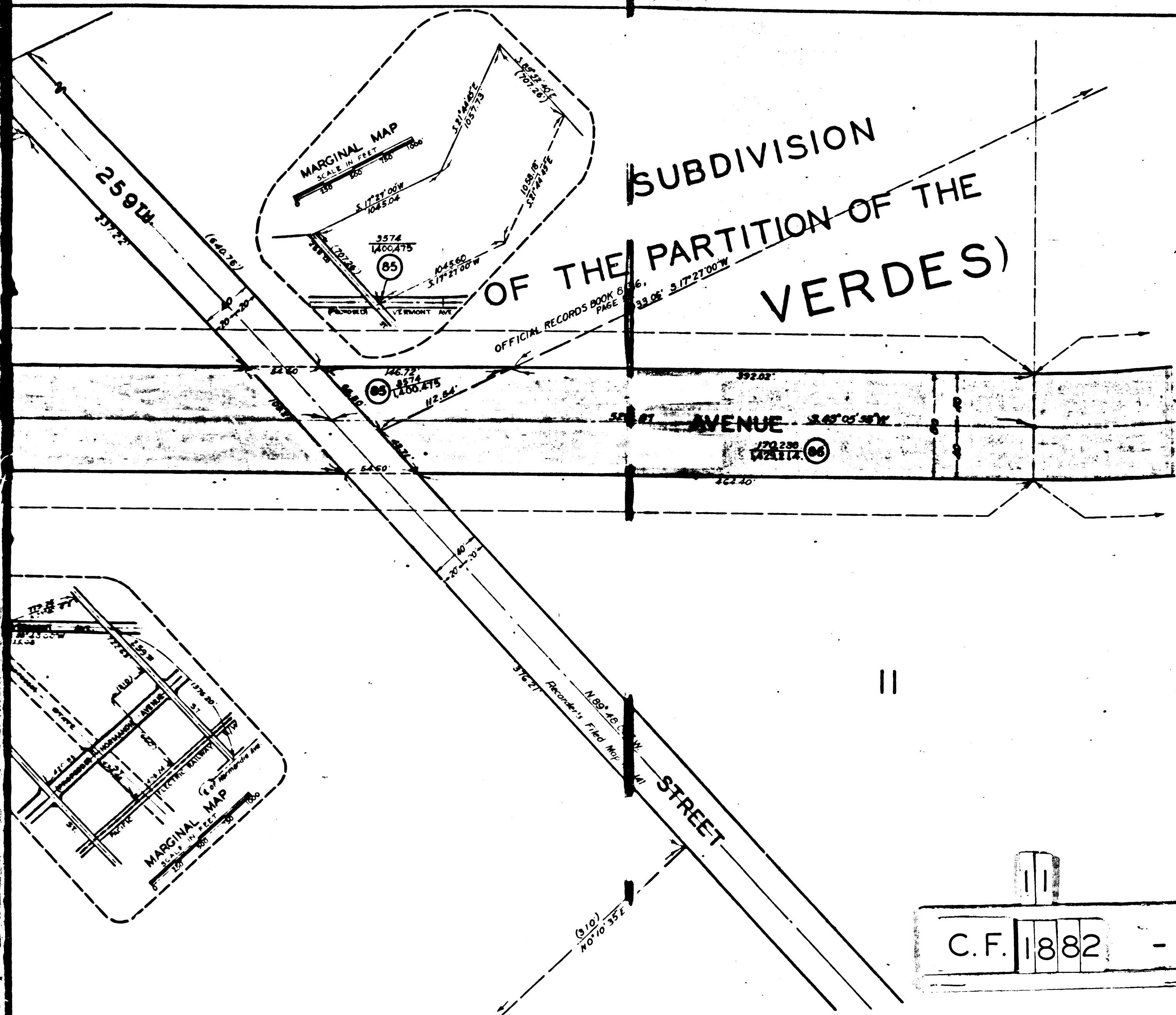
RECORDER'S FILED MAP NO. 11.  
(SUPERIOR COURT CASE 2373.) (C.F. 41)

AREA = 1,027,137"



MARGINAL MAP

10  
C.F. 1882



SEE SHEET NO 5

C.F. 1882 -

A & I. DISTRICT NO. 90	
SHEET NO. 3 OF 5 SHEETS	
DRAWN BY J. S. HUBBERT	AUG 1929
TRACED BY L. Longacre	SEPT 1929
CHECKED BY ET Hubbert	SEPT 1929
REVISED	
C.N.B. June 1930	
C.S. INDEX MAP NO. 28	

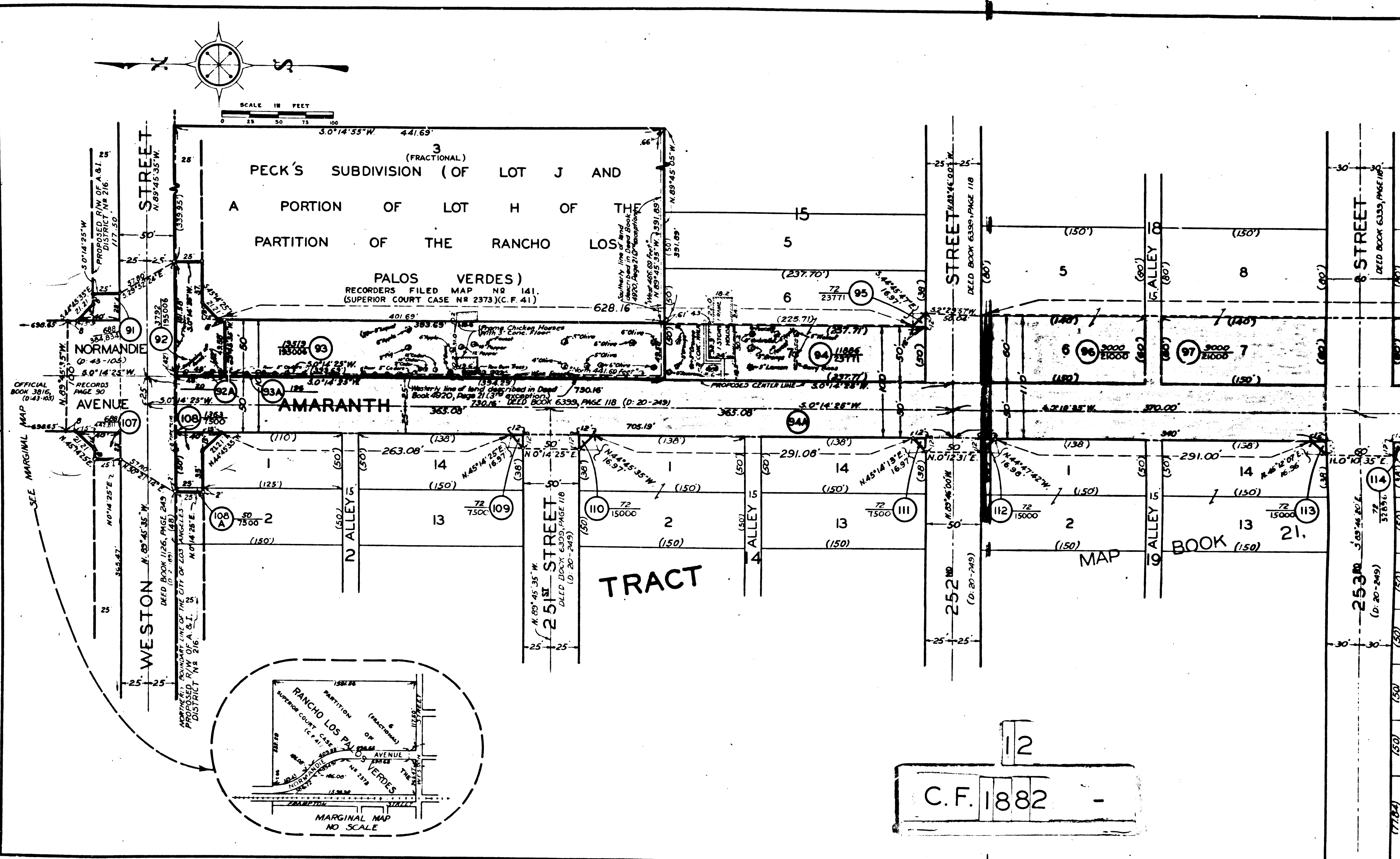
A. & I. DISTRICT NO. 90  
VERMONT AVENUE  
CONDEMNATION MAP  
SHEET NO. 3 OF 5 SHEETS

A. & I. DISTRICT NO. 90  
VERMONT AVENUE  
CONDEMNATION MAP  
SHEET NO. 3 OF 5 SHEETS

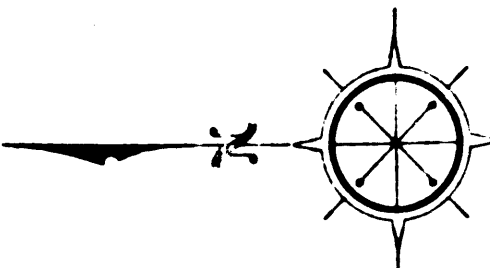
A. & I. DISTRICT NO. 90  
VERMONT AVENUE  
CONDEMNATION MAP  
SHEET NO. 4 OF 5 SHEETS

4

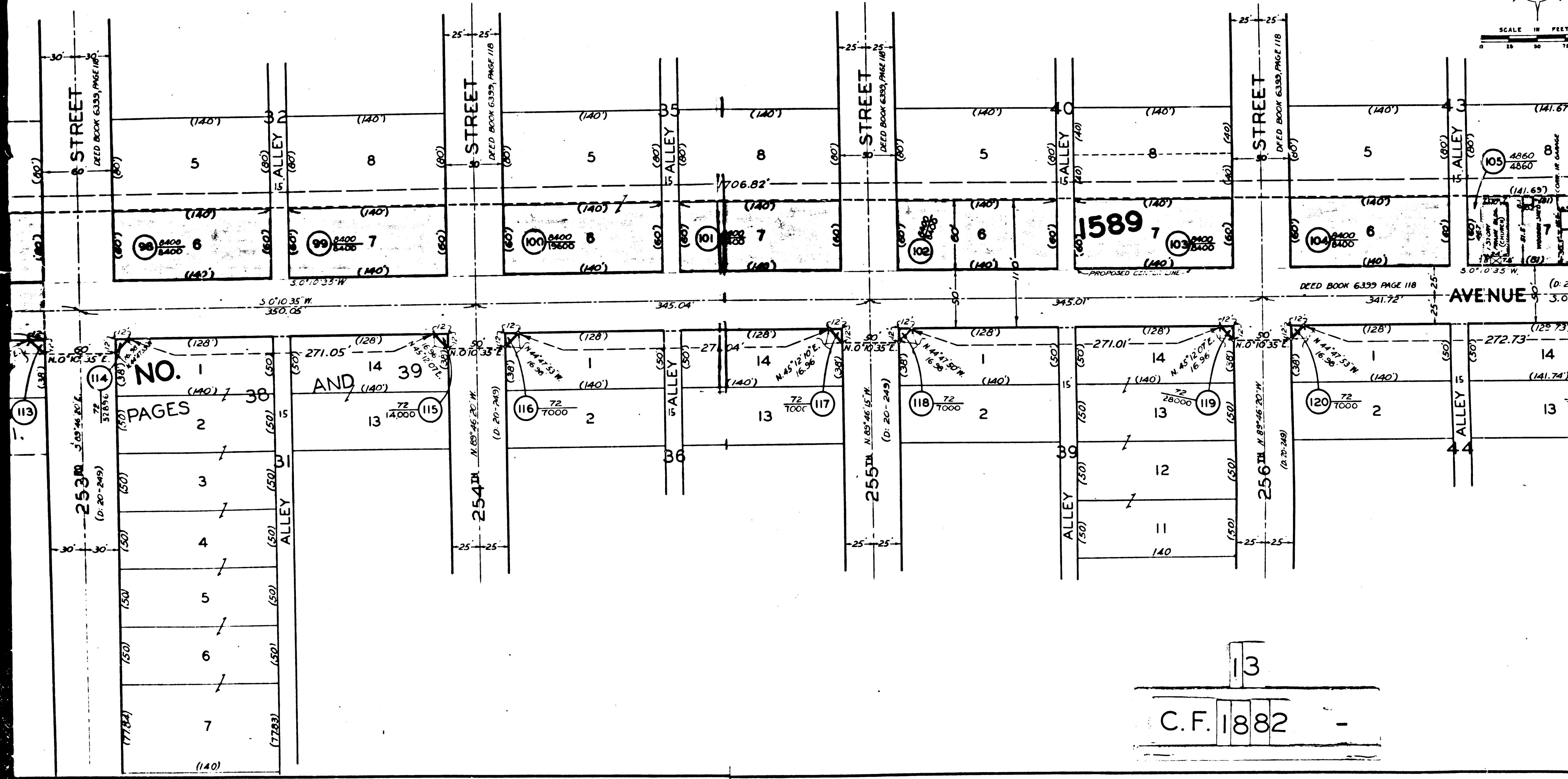
A. & I. DISTRICT NO. 90  
VERMONT AVENUE  
CONDEMNATION MAP  
SHEET NO. 4 OF 5 SHEETS



12  
C.F. 1882



SCALE IN FEET  
0 25 50 75

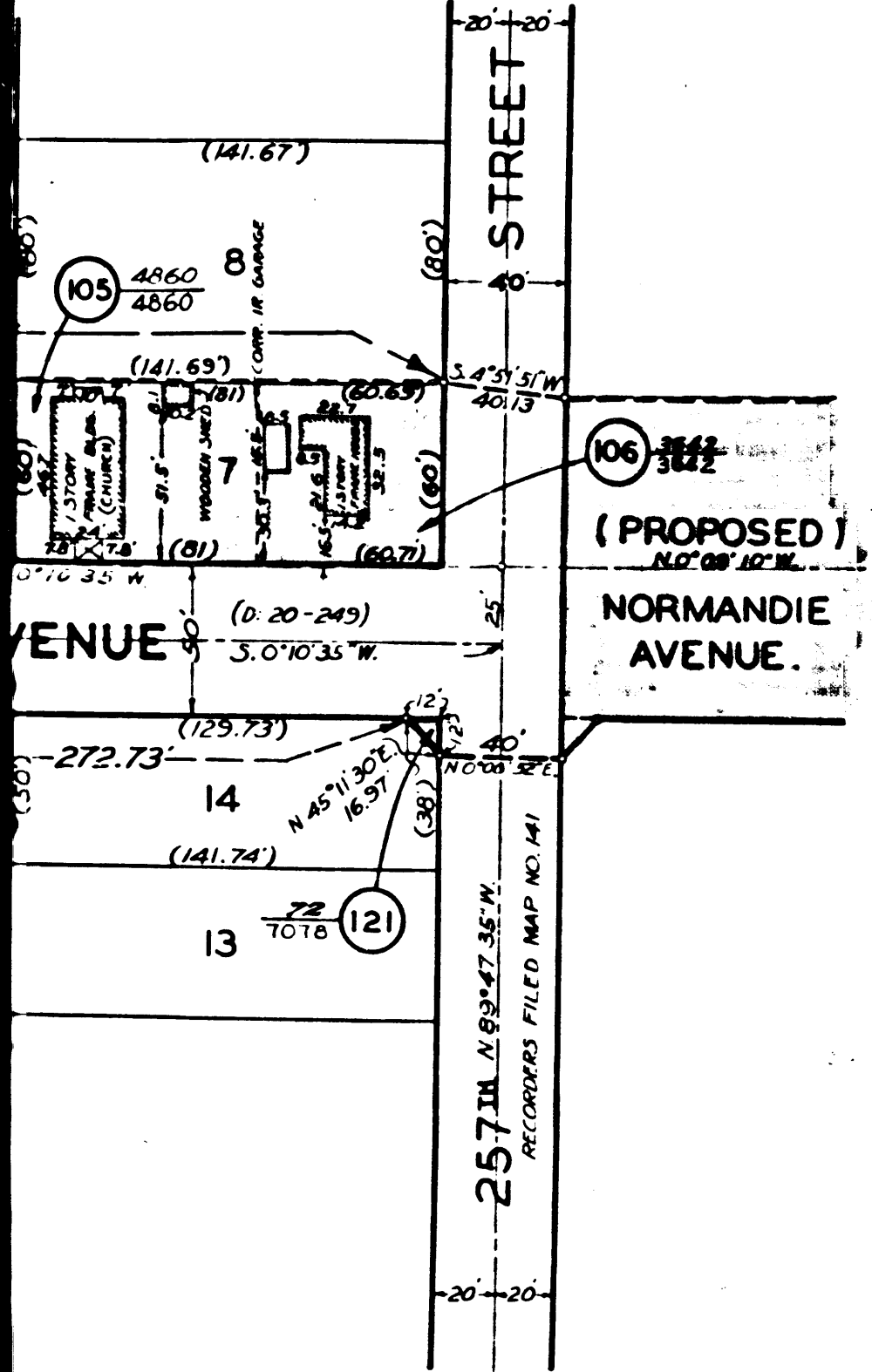
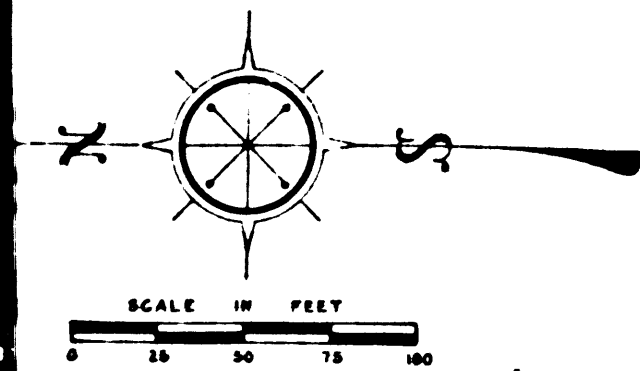


NO. 1  
PAGES 2, 3, 4, 5, 6, 7

AND 39

13

C.F. 1882



SEE SHEET NO. 5

A & I. DISTRICT NO. 90	
SHEET NO. 4 OF 5 SHEETS	
DRAWN BY	HUBBERT HAYES OCT. 1923
TRACED BY	DICKENS NOV. 1923
CHECKED BY	MORGAN NOV. 1923
	REVISED
C.H.S. JUNE, 1936	
C.S. INDEX MAP NO.	

A. & I. DISTRICT NO. 90  
VERMONT AVENUE  
CONDEMNATION MAP  
SHEET NO. 4 OF 5 SHEETS

A. & I. DISTRICT NO. 90  
VERMONT AVENUE  
CONDEMNATION MAP  
SHEET NO. 4 OF 5 SHEETS

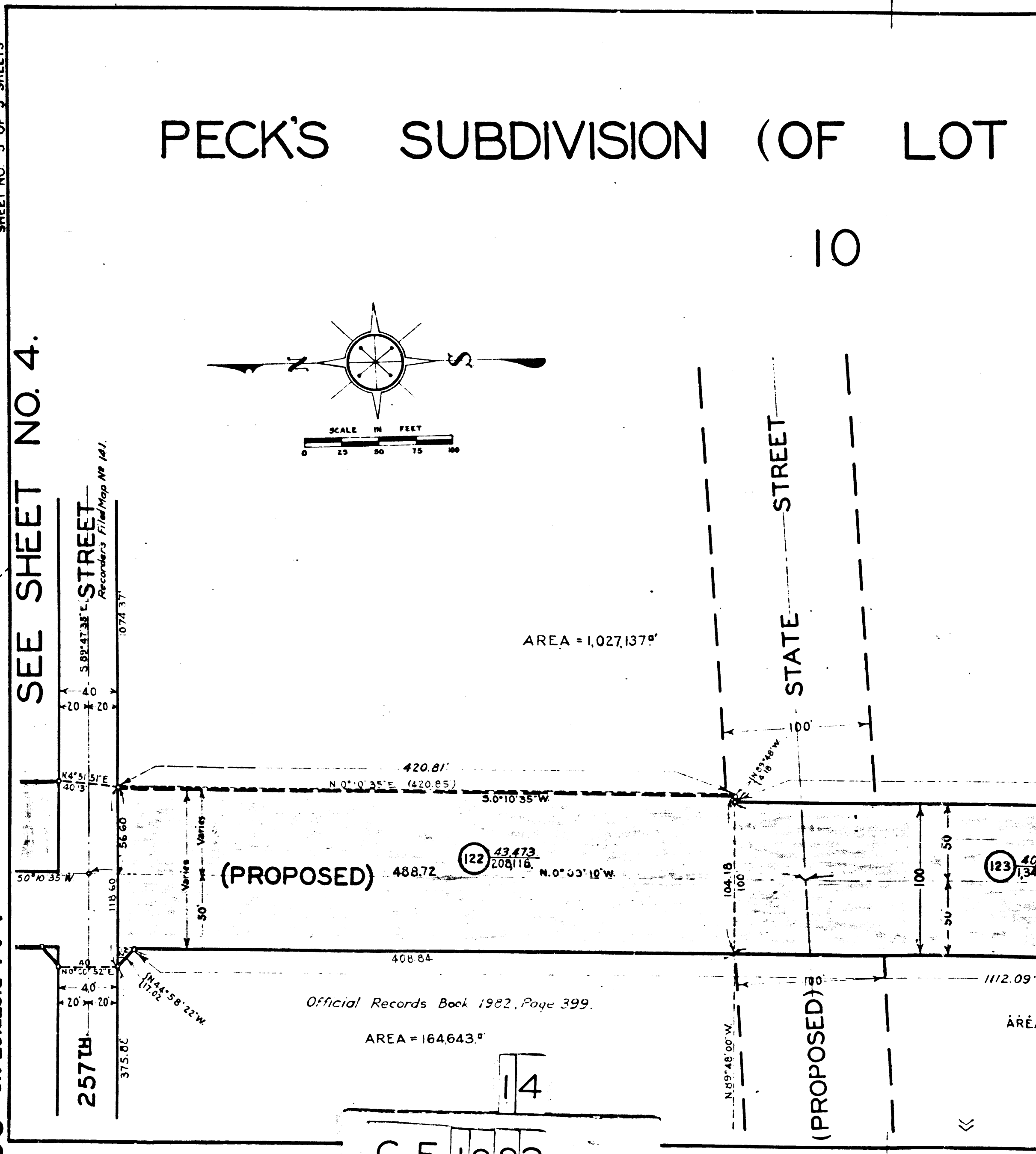
90

A. & I. DISTRICT NO. 90  
VERMONT AVENUE  
CONDEMNATION MAP  
SHEET NO. 5 OF 5 SHEETS

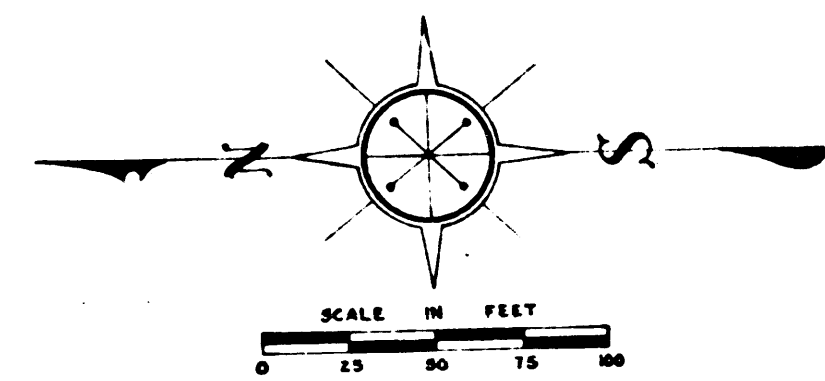
5

A. & I. DISTRICT NO. 90  
VERMONT AVENUE  
CONDEMNATION MAP  
SHEET NO. 5 OF 5 SHEETS

SEE SHEET NO. 4.



PECK'S SUBDIVISION (OF LOT 10



AREA = 1,027,137.9'

AREA = 164,643.9'

Official Records Book 1982, Page 399.

14  
C.F. 1882

(PROPOSED)

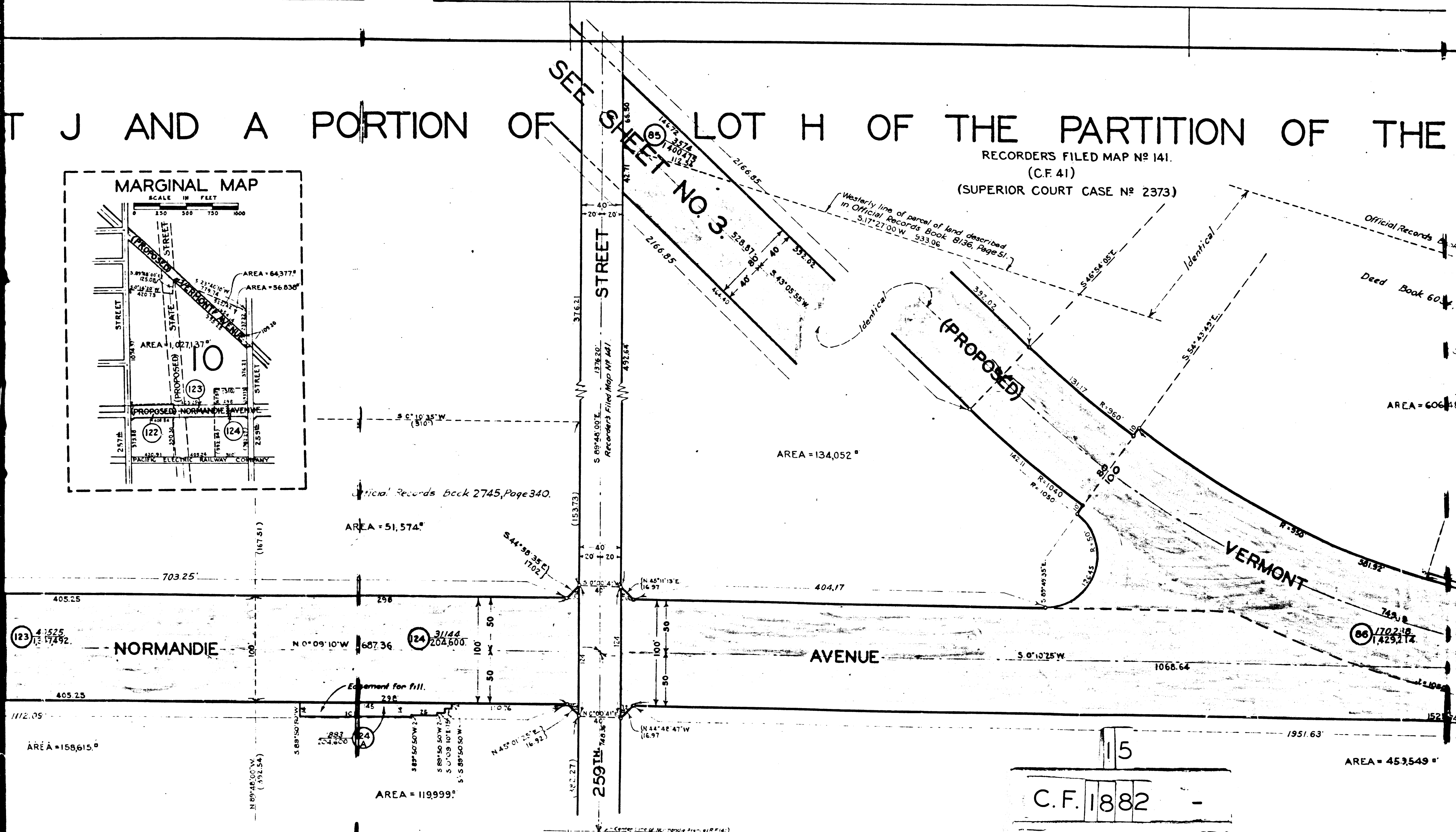
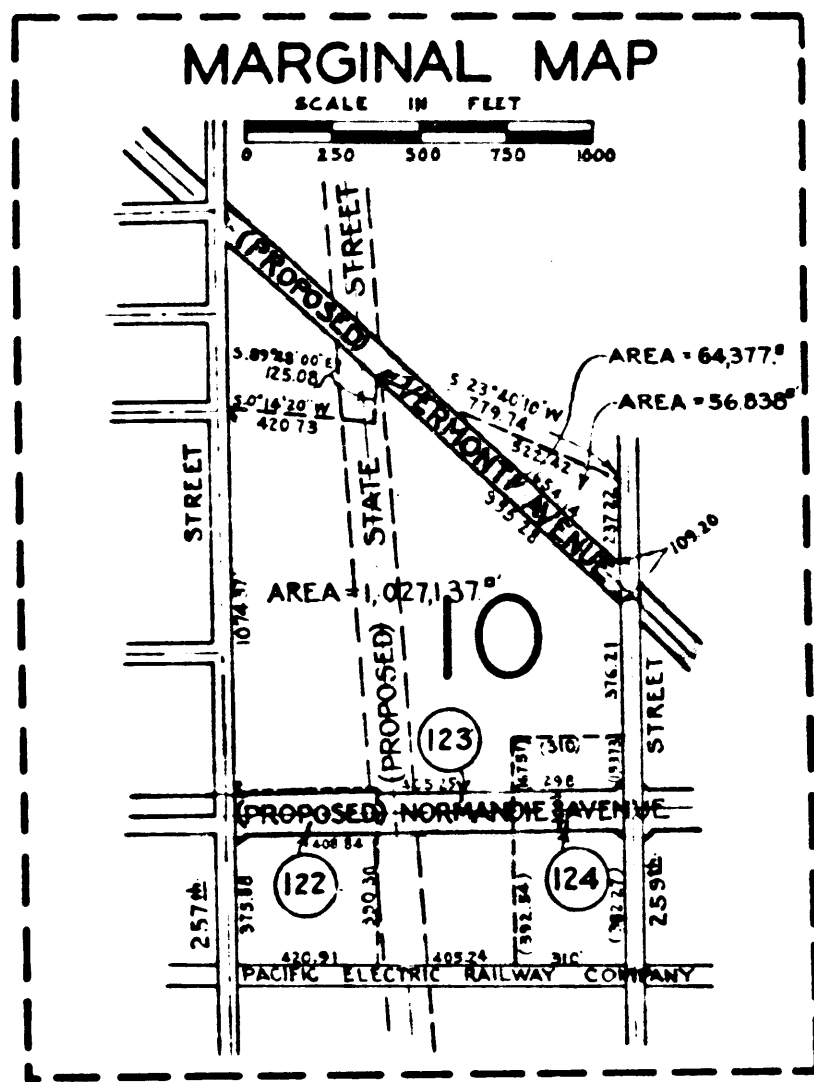
STATE STREET

10

AREA

# T J AND A PORTION OF SHEET NO. 3 LOT H OF THE PARTITION OF THE

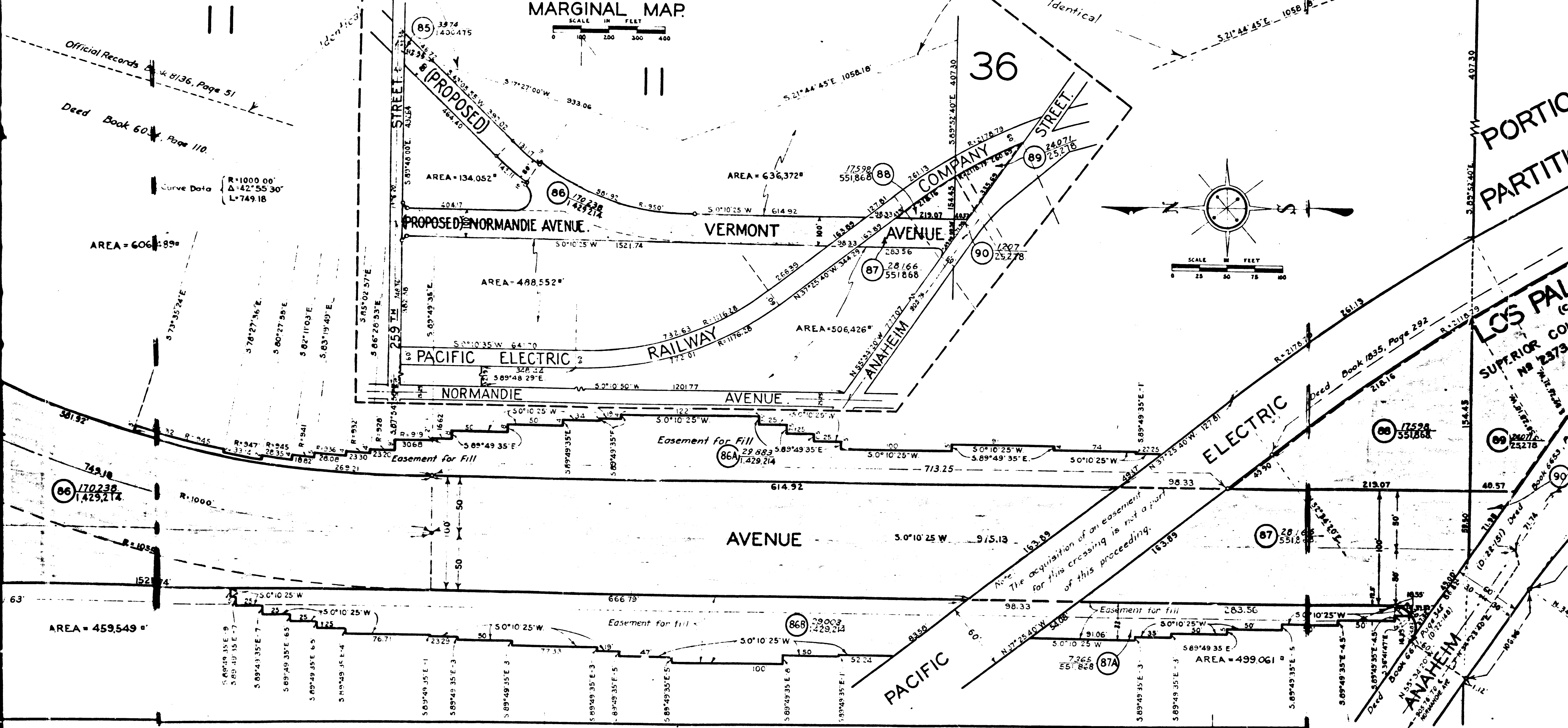
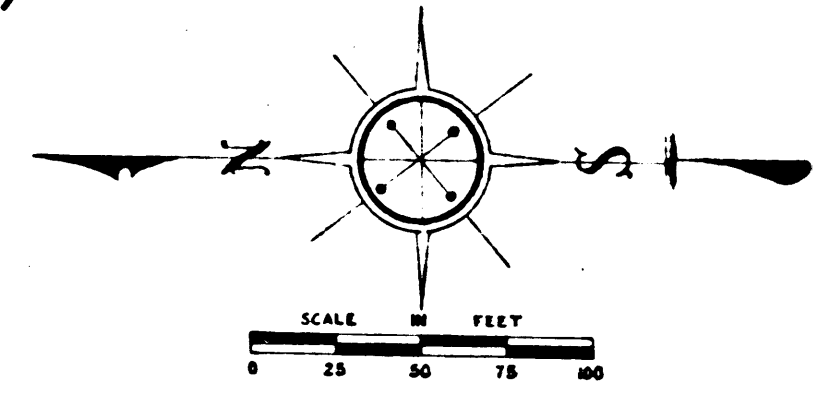
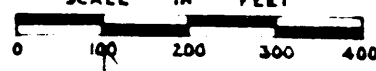
RECORDERS FILED MAP NO. 141.  
(C.F. 41)  
(SUPERIOR COURT CASE NO. 2373)



# F THE RANCHO LOS PALOS VERDES.)

C.F. 1882 -

## MARGINAL MAP



Official Records Book 8136, Page 51

Deed Book 60, Page 110

Curve Data  
R=1000.00'  
Δ=42°55'30"  
L=749.18'

AREA = 606,889'

AREA = 134,052'

AREA = 636,372'

AREA = 488,552'

AREA = 506,426'

86 170,238 / 1,429,214

AREA = 459,549'

86B 29,003 / 1,429,214

AREA = 499,061'

87A 7,265 / 551,868

88 17,598 / 551,868

89 24,071 / 252,278

87 28,166 / 551,868

90 24,071 / 252,278

LOS PALOS VERDES (C.F. 1882) SUPERIOR COURT No. 2373

PARTITION

407.30

Identical S 21° 44' 45" E 1058.18'

Identical

36

VERMONT AVENUE

NORMANDIE AVENUE

AVENUE

ELECTRIC

PACIFIC

ANAHEIM

Note: The acquisition of an easement for this crossing is not a part of this proceeding.

Deed Book 663, Page 292

Deed Book 1835, Page 292

Deed Book 663, Page 292

Deed Book 663, Page 292

Deed Book 663, Page 292

Deed Book 663, Page 292

Deed Book 663, Page 292

Deed Book 663, Page 292



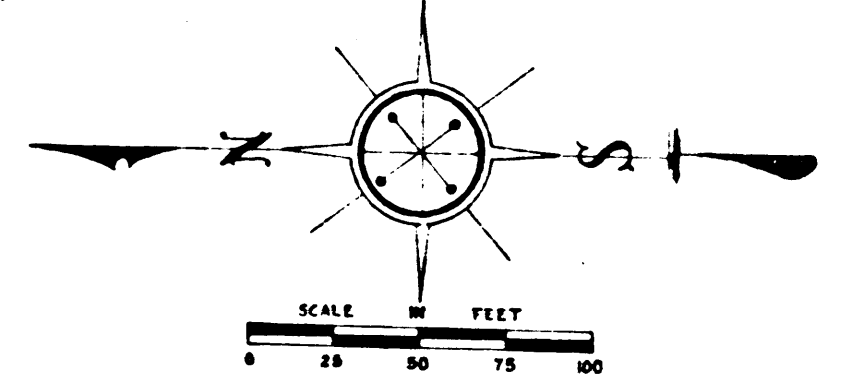
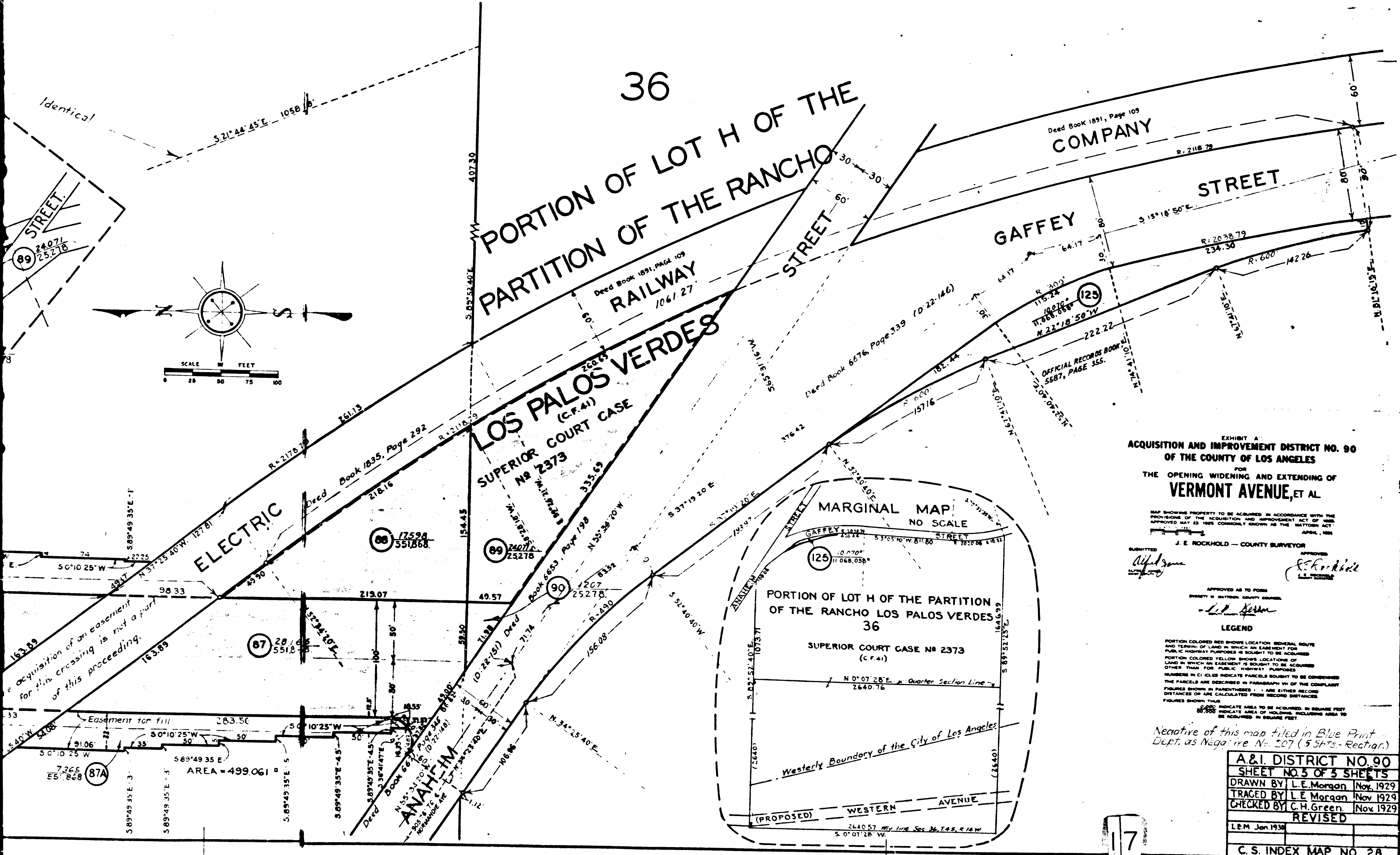


EXHIBIT A  
ACQUISITION AND IMPROVEMENT DISTRICT NO. 90  
OF THE COUNTY OF LOS ANGELES  
FOR  
THE OPENING WIDENING AND EXTENDING OF  
VERMONT AVENUE, ET AL.

MAP SHOWING PROPERTY TO BE ACQUIRED IN ACCORDANCE WITH THE PROVISIONS OF THE ACQUISITION AND IMPROVEMENT ACT OF 1988 APPROVED MAY 23 1988 COMMONLY KNOWN AS THE BAYBORN ACT APRIL, 1988

PREPARED BY J. E. ROCKHOLD - COUNTY SURVEYOR  
APPROVED BY *Alfred Green* L.E. MORGAN  
*E. C. Rockhold* L.E. ROCKHOLD

APPROVED AS TO FORM  
PROPERTY IN MATTER COUNTY COURSE  
*L. E. Morgan*

LEGEND  
PORTION COLORED RED SHOWS LOCATION GENERAL ROUTE AND TERMINI OF LAND IN WHICH AN EASEMENT FOR PUBLIC HIGHWAY PURPOSES IS SOUGHT TO BE ACQUIRED  
PORTION COLORED YELLOW SHOWS LOCATIONS OF LAND IN WHICH AN EASEMENT IS SOUGHT TO BE ACQUIRED OTHER THAN FOR PUBLIC HIGHWAY PURPOSES  
NUMBERS IN CIRCLES INDICATE PARCELS SOUGHT TO BE CONDEMNATED  
THE PARCELS ARE DESCRIBED IN PARAGRAPH VII OF THE COMPLAINT  
FIGURES SHOWN IN PARENTHESES ( ) ARE EITHER RECORD DISTANCES OR ARE CALCULATED FROM RECORD DISTANCES  
FIGURES SHOWN THIS WAY  $\frac{1}{2}$  INDICATE AREA TO BE ACQUIRED IN SQUARE FEET  
 $\frac{1}{100}$  INDICATE AREA OF HOLDING INCLUDING AREA TO BE ACQUIRED IN SQUARE FEET

Negative of this map filed in Blue Print Dept. as Negative No. 207 (5 Shrs. - Rechar.)

A. & I. DISTRICT NO. 90	
SHEET NO. 5 OF 5 SHEETS	
DRAWN BY	L. E. Morgan Nov. 1929
TRACED BY	L. E. Morgan Nov. 1929
CHECKED BY	C. H. Green Nov. 1929
REVISED	
L. E. M.	Jan. 1930
C. S. INDEX MAP NO. 28	

C.F. 1882

17