

Sht. 44
 Superior Court Case No. 321929
 Suit for Condemnation
 Filed May 22, 1931
 City of San Marino, Plaintiff.
 Vs.
 Thomas George Corfield et al., Def.
*Interlocutory judgment as per
 map, rendered Apr. 27, 1932.
 Judg. BK. 798-189*
 Final judgment in favor of Pltff. as per map
 rendered Oct. 17th 1932 J.B. 839-5.
 D. 88-138,

Note:- Distances shown on this map in red were taken from judgment in S.C.C. 321929.
 Co. Sur. 6-9-32.

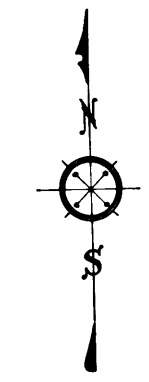
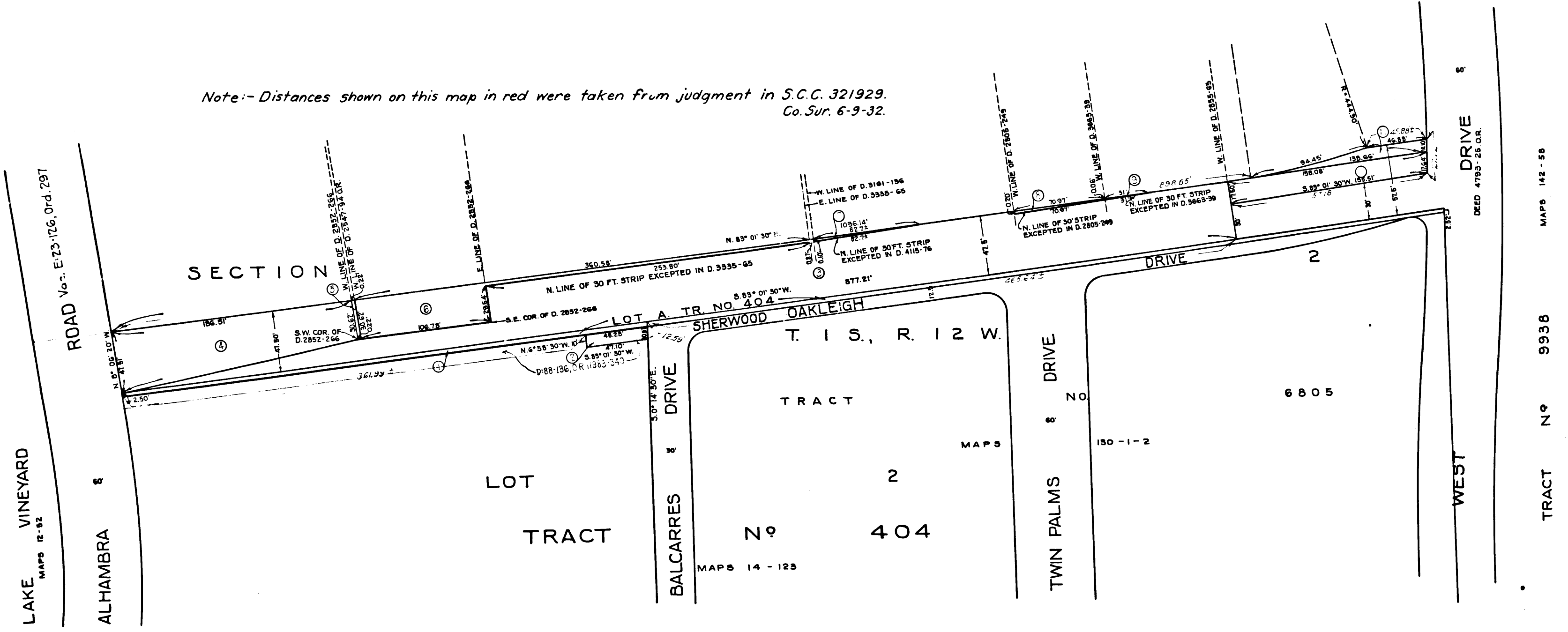


EXHIBIT "C"
 PLAT SHOWING
 PT. OF LOTS 2 AND A
 TRACT N^o 404
 MAPS 14-123
 AND
 PT. OF SECTION 2, T. 15, R. 12 W., S.B.B. AND M.
 LOS ANGELES COUNTY, CALIFORNIA.

— Indicates portion to be condemned.

C.F. 1883 -