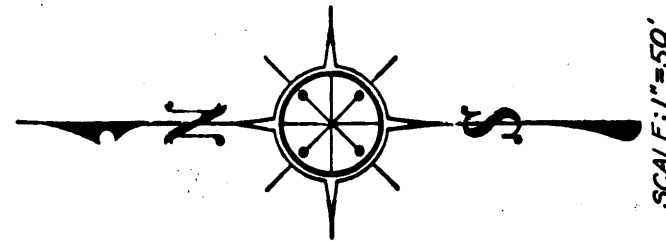
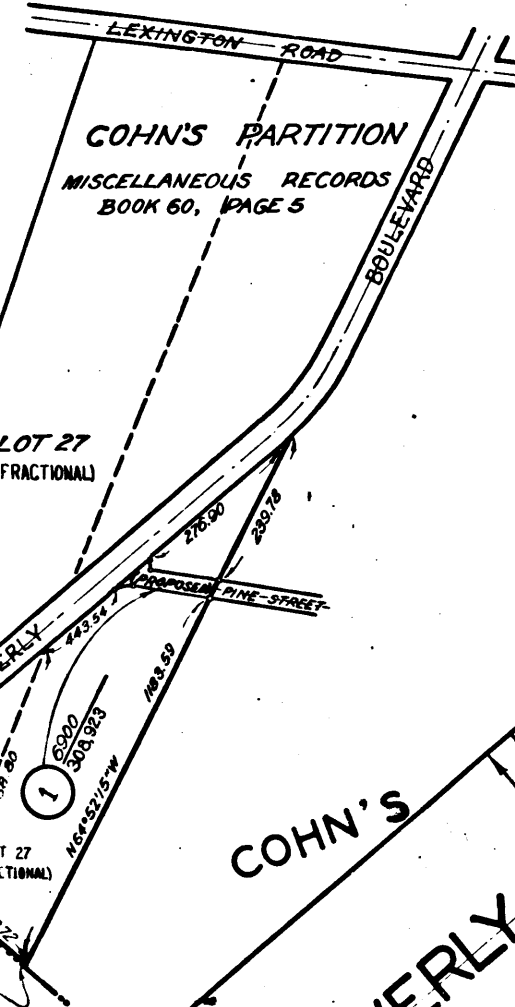


MARGINAL MAP
NO SCALE



SCALE: 1"=50'

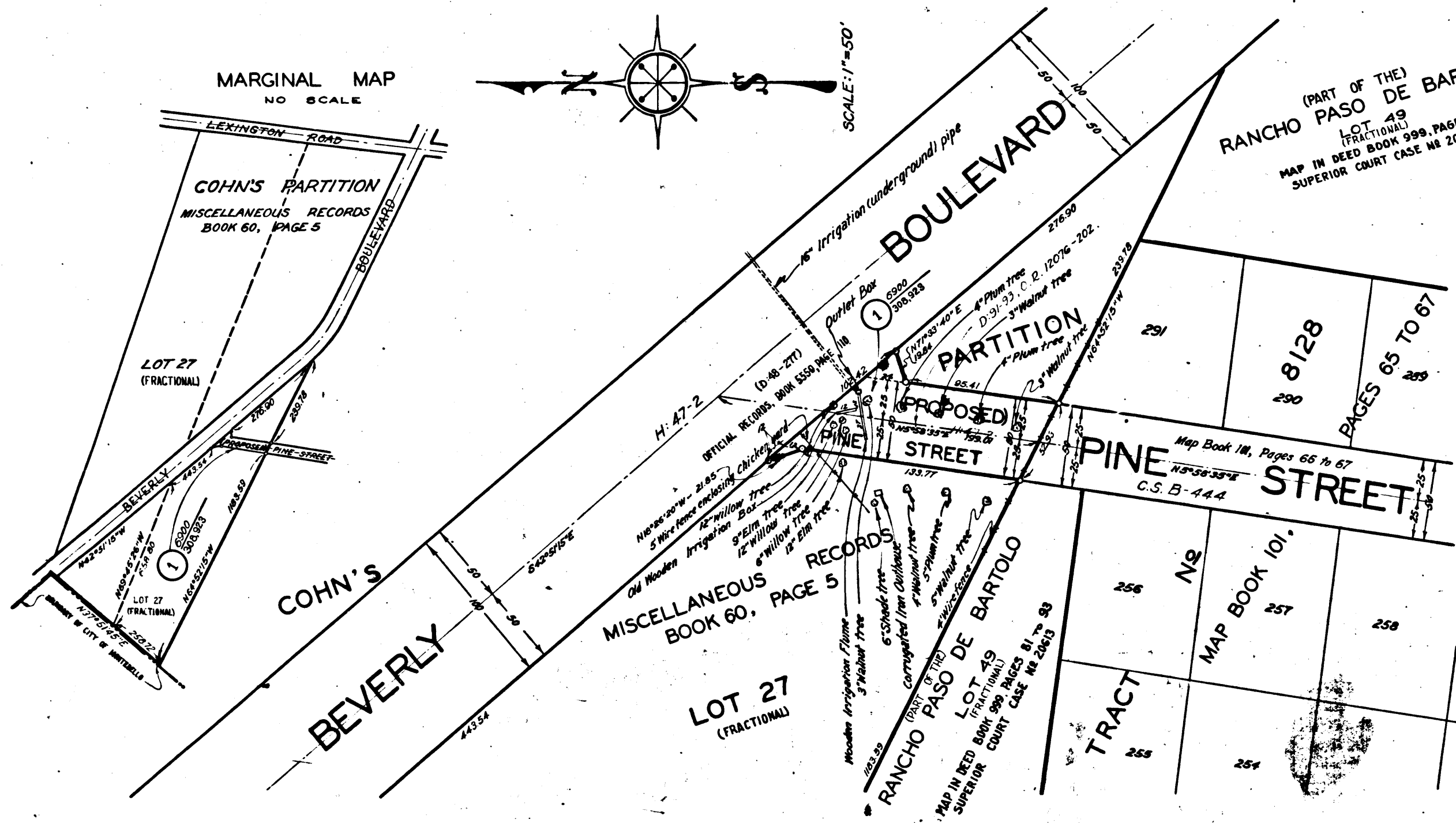


EXHIBIT "A"
**STREET OPENING DISTRICT NO. 109
OF THE COUNTY OF LOS ANGELES**
FOR
PINE STREET

MAP SHOWING PROPERTY TO BE ACQUIRED IN ACCORDANCE WITH THE PROVISIONS
OF THE COUNTY STREET OPENING ACT OF 1923. APPROVED MAY 11, 1923.
SCALE: 1"=50'. DECEMBER, 1930.

J. E. ROCKHOLD — COUNTY SURVEYOR

SUBMITTED:
Alfred Jones
ALFRED JONES
CHIEF DEPUTY.

APPROVED:
J. E. Rockhold
J. E. ROCKHOLD
COUNTY SURVEYOR.

APPROVED AS TO FORM:
EVERETT W. MATTOON, COUNTY COUNSEL.

BY: *H. W. Kennedy*
DEPUTY COUNTY COUNSEL.

Sht 36
Superior Court Case No. 321787
Suit for Condemnation
Filed May 20th 1931
County of Los Angeles, Plaintiff
Vs
Edward Cote et al, Defendants
Case dismissed July 14, 1936.

LEGEND

PORTION COLORED RED SHOWS LOCATION, GENERAL ROUTE
AND TERMINI OF LAND IN WHICH AN EASEMENT FOR
PUBLIC HIGHWAY PURPOSES IS SOUGHT TO BE ACQUIRED.
NUMBERS IN CIRCLES INDICATE PARCELS SOUGHT TO BE CONDEMNED.
THE PARCELS ARE DESCRIBED IN PARAGRAPH VII OF THE COMPLAINT.
FIGURES SHOWN IN PARENTHESES () ARE EITHER RECORD
DISTANCES OR ARE CALCULATED FROM RECORD DISTANCES.
FIGURES SHOWN THUS:
0,000 INDICATE AREA TO BE ACQUIRED, IN SQUARE FEET.
00,000 INDICATE AREA OF HOLDING, INCLUDING AREA TO
BE ACQUIRED, IN SQUARE FEET.

C.F. 1885 -

Negative of this map filed in Blue
Print Dept. as Neg. No. 157.

S. O. DISTRICT NO. 109	
SHEET NO. 1 OF 1 SHEET	
DRAWN BY	P. Cravitz FEB. 1930
TRACED BY	P. Cravitz FEB. 1930
CHECKED BY	M. S. Dunlap FEB. 1930
REVISED	
C.S. INDEX MAP NO. 36	