

AVENUE

PARK

ROAD

COLORADO AVE

OCEAN

Superior Court Case No. 224647
 Suit for Condemnation
 Filed May 23, 1927
 City of Santa Monica, Plt'ff.
 vs.
 R. A. Dallugge, et al., Def.
 Interlocutory judgment as to parcels
 4, 6, 11, 12, 13, 14 & 15 rendered Feb.
 18th 1931. Judg. Bk. 771-226.
 Interlocutory judgment as to parcels
 1, 2, 3, 5, 7, 8, 9, 10 & 16 rendered Feb.
 18th 1931. Judg. Bk. 770-118.
 Proceedings abandoned Aug. 27th
 1931. See Case for various judg-
 ments of dismissal.

Note: - There was no
 map filed in this Case.
 This map was secured
 from City Engineer of
 Santa Monica.
 Co. Sur.

MAP OF
 PALISADES PARK
 FROM COLORADO AVENUE TO MONTANA AVENUE
 SCALE 1"=40'

NOTE: -
 This map was traced from a blue line
 print. Distances will not scale due to shrinkage.

C.F. 1886 -

221

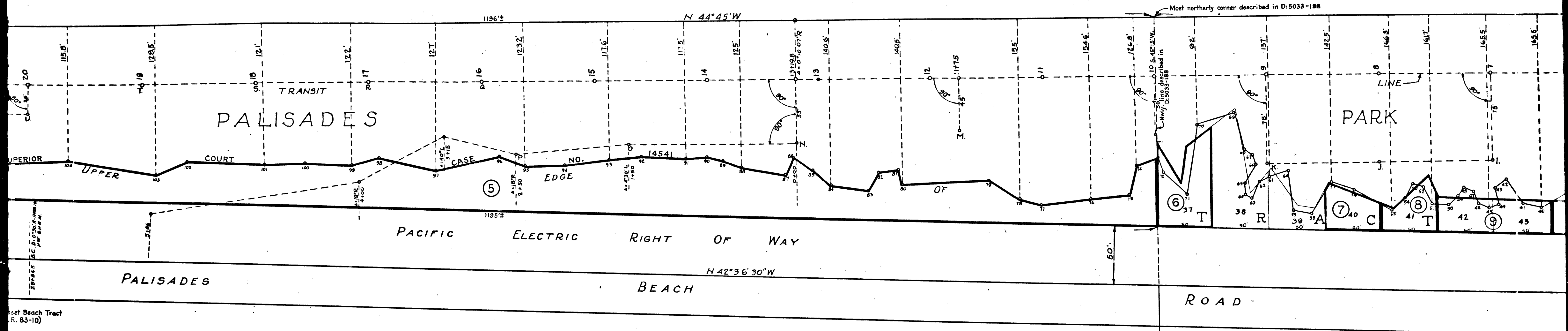
ARIZONA AVE

BROADWAY

OCEAN

CENTER LINE

CENTER LINE



Most northerly corner described in D:5033-188

⑤

⑥

⑦

⑧

⑨

③ Indicates Parcel Numbers of Land to Acquired, as described in Par. VII of the Complaint.

Superior Court Case No. 224647
Suit for Condemnation
Filed May 23, 1927
City of Santa Monica, Plt'ff.
vs.
R. A. Dallugge, et al., Def.

*Interlocutory judgment as to parcels 4, 6, 11, 12, 13, 14 & 15 rendered Feb. 18th 1931. Judg. Bk. 771-226.
Interlocutory judgment as to parcels 1, 2, 3, 5, 7, 8, 9, 10 & 16 rendered Feb. 18th 1931. Judg. Bk. 770-118.
Proceedings abandoned Aug. 27th 1931. See Case for various judgments of dismissal.*

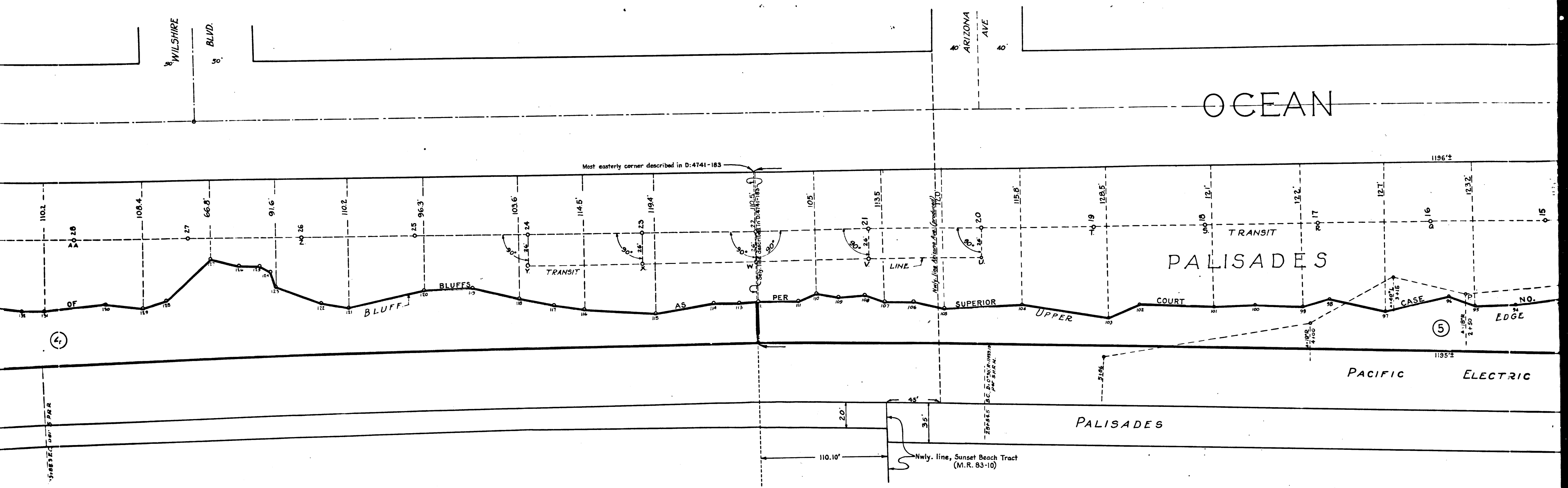
Note:- There was a map filed in this case. This map was secured from City Engineer Santa Monica, Co.

PACIFIC

2

OCEAN

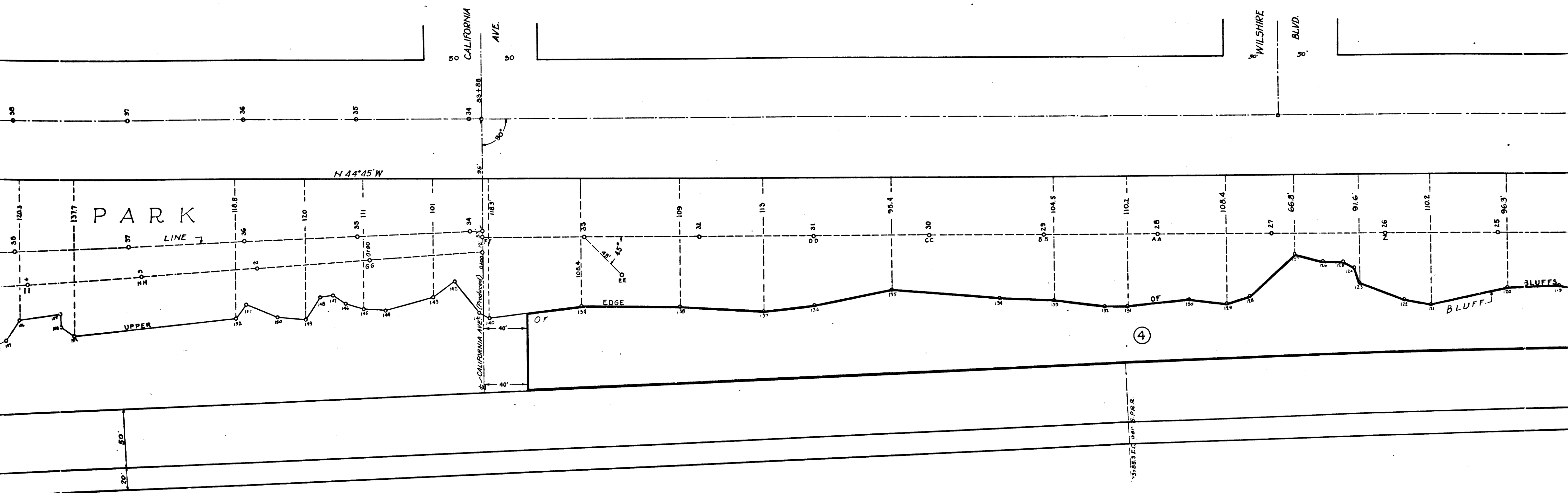
C.F. 1886 -



3

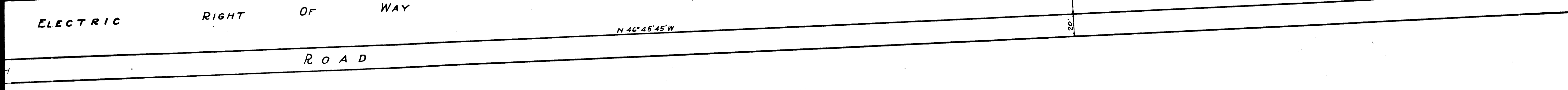
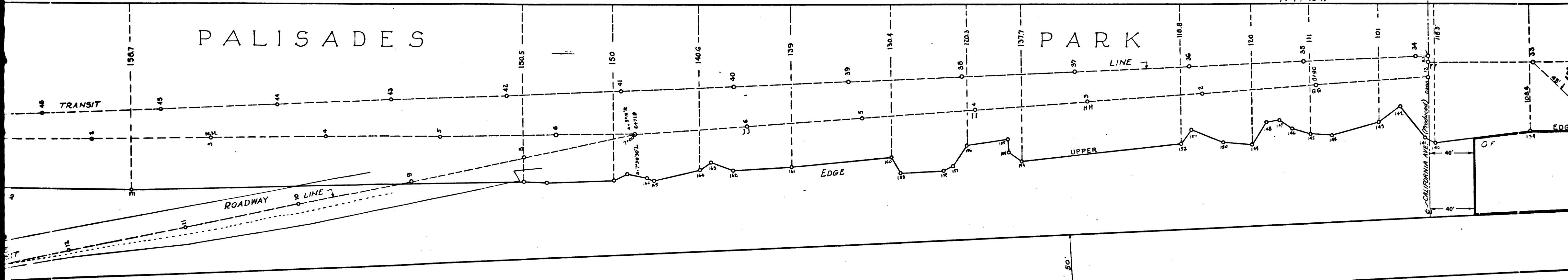
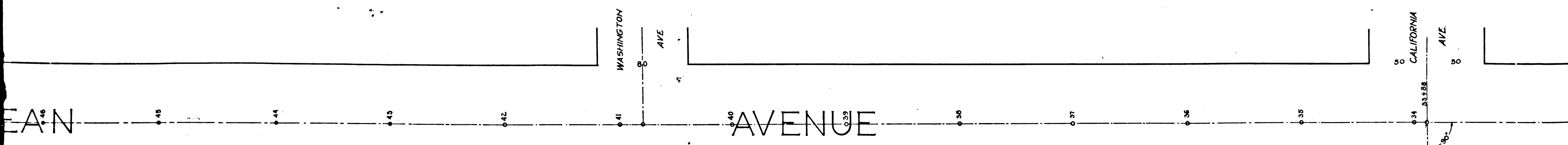
PACIFIC

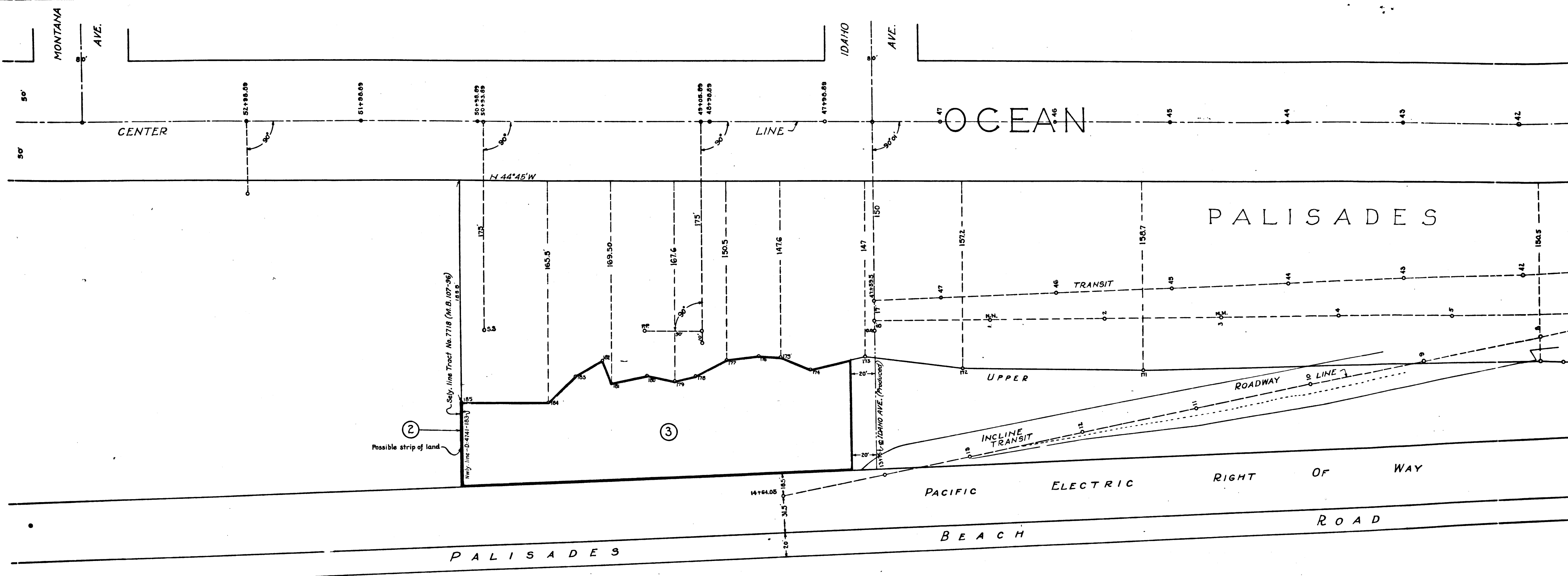
C.F. 1886 -



4

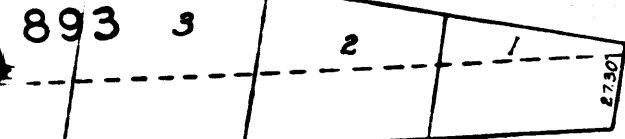
C.F. 1886 -





PACIFIC

6
 C.F. 1886 -



EXTENSION

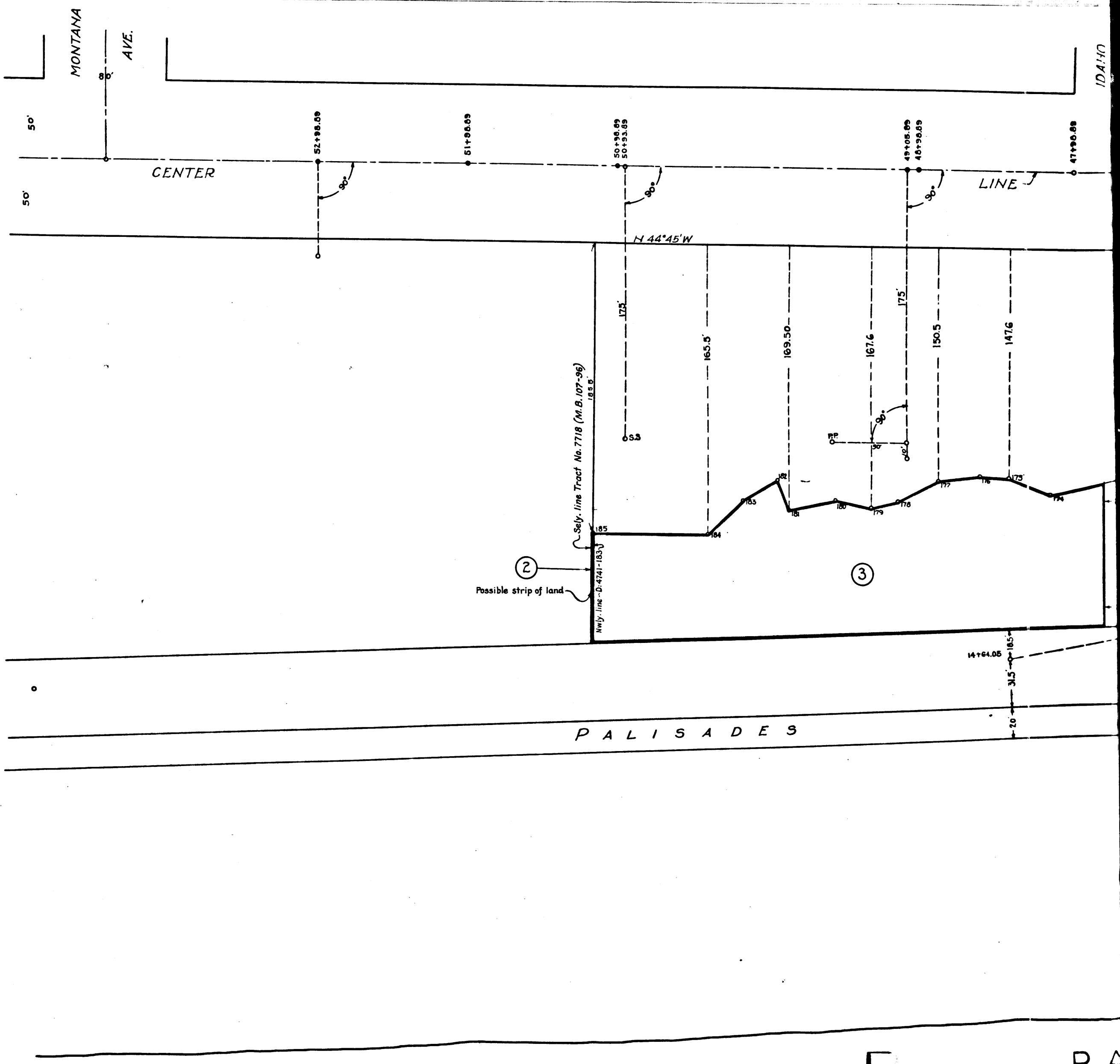
NY'S TRACT

No. 552

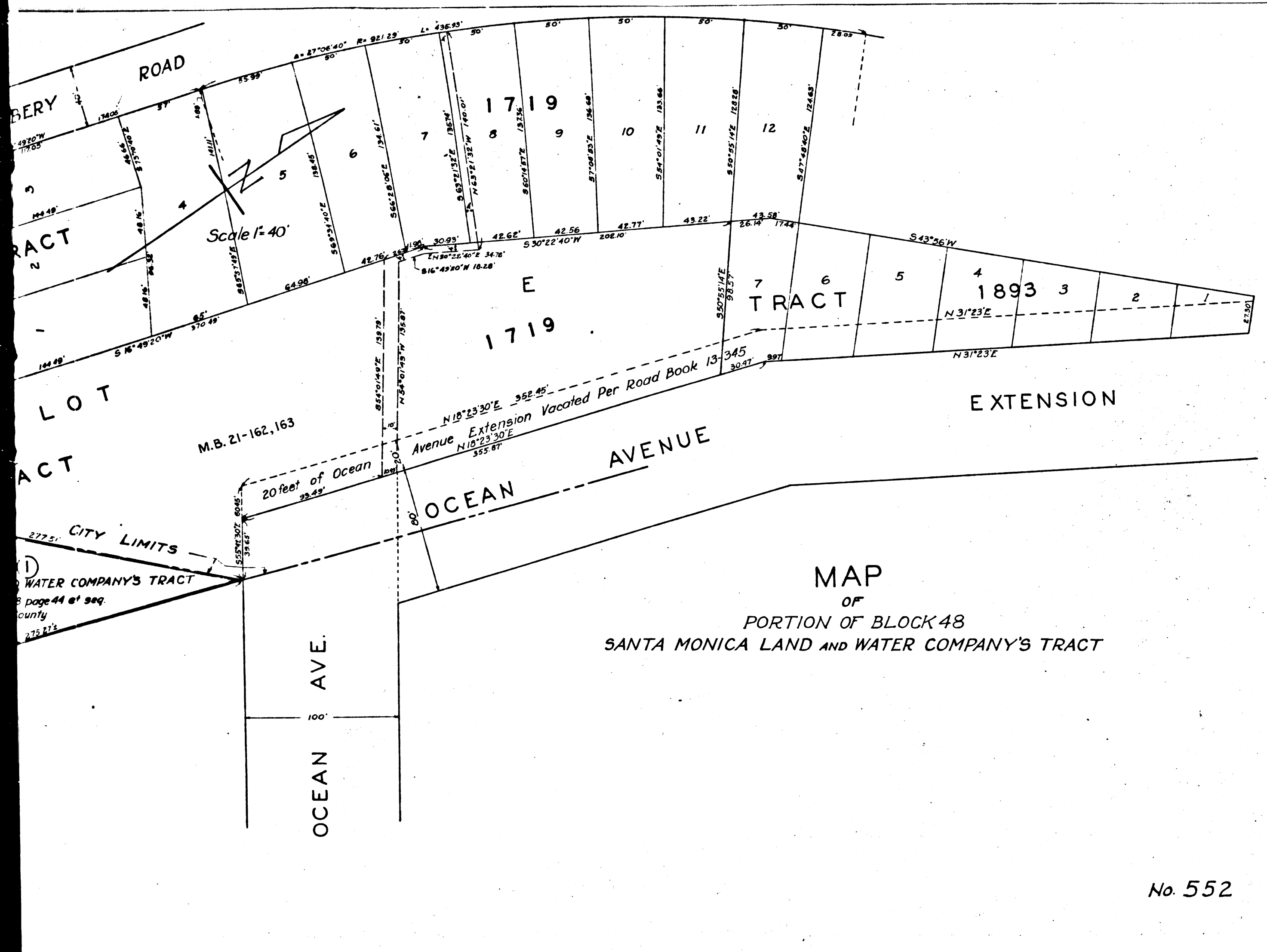
TABLE FOR TIE LINES TO ANGLE POINTS ON UPPER EDGE OF BLUFF OF LINDA VISTA PARK

Point No.	Transit point	course	distance	Point No.	Transit point	course	distance	Point No.	Transit point	course	distance
1	A	S 39°46'E	2.1'	68	K	N 15°30'W	23.2'	135	CC	S 81°25'W	5.7'
2	A	S 45°15'W	1.0'	69	K	N 11°15'E	5.2'	136	DD	S 46°0'W	5.9'
3	B	S 33°0'E	3.7'	70	K	N 16°45'W	7.05'	137	DD	S 80°45'W	7.8'
4	B	S 8°0'W	1.75'	71	K	N 64°0'W	76.5'	138	EE	S 15°30'E	56.8'
5	B	S 77°45'E	2.4'	72	K	N 49°35'W	23.5'	139	EE	N 81°0'W	45.5'
6	B	N 66°45'W	13.9'	73	L	S 36°45'W	20.9'	140	FF	S 41°05'W	6.9'
7	B	N 66°45'W	1.0'	74	L	S 79°30'W	3.2'	141	FF	S 49°0'W	6.4'
8	B	N 1°15'W	2.8'	75	L	S 70°35'W	5.7'	142	FF	S 79°15'W	4.55'
9	C	S 45°15'W	4.6'	76	L	N 88°0'W	80.5'	143	FF	S 86°15'W	6.8'
10	C	N 39°25'W	2.0'	77	M	S 2°45'E	9.6'				
11	C	N 47°15'W	3.3'	78	M	S 4°25'E	7.9'	144	GG	S 28°41'W	4.55'
12	D	S 16°15'W	18.5'	79	M	S 15°15'E	4.9'	145	GG	S 53°21'W	4.25'
13	D	S 49°45'W	2.1'	80	M	N 85°35'W	6.9'	146	GG	S 75°31'W	4.4'
14	D	N 87°15'W	2.25'	81	M	N 75°15'W	6.4'	147	GG	N 87°39'W	4.5'
15	D	N 69°45'W	1.7'	82	M	N 70°15'W	8.1'	148	GG	N 80°49'W	3.5'
16	D	N 48°45'W	3.0'	83	M	N 76°05'W	9.65'	149	GG	N 86°39'W	7.7'
17	D	N 48°45'W	4.3'	84	N	S 5°45'W	4.7'	150	GG	N 75°09'W	9.58'
18	E	S 35°25'W	3.0'	85	N	S 13°30'W	2.7'	151	HH	S 29°19'E	9.3'
19	E	S 37°30'W	3.25'	86	N	S 59°25'W	1.3'	152	HH	S 20°24'E	8.85'
20	E	S 48°15'W	3.25'	87	N	S 67°25'W	2.9'	153	HH	N 82°38'W	7.8'
21	F	S 70°30'W	3.6'	88	N	N 66°45'W	5.4'	154	HH	N 76°19'W	8.25'
22	F	S 24°45'W	4.3'	89	N	N 87°0'W	6.85'	155	HH	N 69°19'W	7.9'
23	F	S 40°15'W	3.65'	90	O	S 35°45'E	6.86'	156	II	S 59°39'W	3.2'
24	F	S 81°15'W	1.7'	91	O	S 32°08'E	5.24'	157	II	S 67°15'W	5.2.7'
25	F	N 78°45'W	2.7'	92	O	S 2°25'E	14.5'	158	II	S 73°30'W	5.9.4'
26	F	N 68°15'W	4.75'	93	O	N 80°35'W	21.5'	159	II	N 84°36'W	8.5.24'
27	F	N 72°45'W	7.4'	94	O	N 61°45'W	5.9'	160	II	N 74°39'W	8.5'
28	G	S 71°45'W	4.8'	95	O	N 55°30'W	9.4'	161	JJ	S 2°09'E	5.2.4'
29	G	S 88°35'W	8.1'	96	P	N 49°55'W	1.5'	162	JJ	S 64°11'W	4.0.5'
30	G	S 87°45'W	7.3'	97	Q	S 73°05'W	8.7'	163	JJ	N 88°39'W	4.5.4'
31	G	N 81°55'W	8.05'	98	R	S 37°45'W	6.6'	164	JJ	N 81°09'W	5.6.3'
32	G	N 72°15'W	7.15'	99	R	S 57°30'W	7.4'	165	JJ	N 74°09'W	9.5.9'
33	G	N 68°0'W	6.4'	100	R	S 84°45'W	9.0'	166	JJ	N 71°09'W	9.9.2'
34	G	N 59°35'W	7.45'	101	S	S 40°15'W	7.1'	167	KK	S 58°36'W	3.5.4'
35	G	N 62°45'W	9.0'	102	S	S 87°0'W	9.1'	168	KK	S 70°01'W	4.3.9'
36	H	S 35°25'W	50.5'	103	T	S 37°15'W	7.9'	169	KK	N 72°59'W	8.8.7'
37	H	S 71°0'W	5.55'	104	T	S 89°45'W	9.25'	170	LL	S 44°18'30"E	9.6.7'
38	H	N 83°30'W	6.8'	105	U	S 84°35'W	9.6.6'	171	MM	N 78°11'W	8.1.1'
39	H	N 65°05'W	9.1'	106	U	N 75°26'W	7.3'	172	NN	S 75°21'W	4.7.6'
40	I	S 0°30'W	5.75'	107	V	S 27°15'W	3.9'	173	OO	S 65°30'W	2.3.3'
41	I	S 10°45'W	4.5'	108	V	S 53°25'W	3.1.5'	174	OO	N 74°55'W	6.3.7'
42	I	S 9°45'W	2.0'	109	V	S 88°45'W	4.2.5'	175	OO	N 59°55'W	8.3.2'
43	I	S 40°15'W	2.5.5'	110	V	N 75°55'W	5.5.5'	176	OO	N 56°30'W	10.1.8'
44	I	S 37°55'W	3.7.5'	111	V	N 73°45'W	7.2.5'	177	PP	S 25°15'E	7.4.5'
45	I	S 50°0'W	40.5'	112	W	S 45°15'W	3.4'	178	PP	S 3°35'E	5.8.3'
46	I	S 64°35'W	3.9'	113	W	S 71°15'W	3.8.5'	179	PP	S 13°36'W	60.1'
47	I	S 76°45'W	3.1.5'	114	W	N 85°45'W	5.2.1'	180	PP	S 41°15'W	3.7.5'
48	I	N 87°35'W	3.4'	115	W	N 70°15'W	10.0.5'	181	PP	S 78°15'W	5.9.1'
49	I	S 89°45'W	4.2'	116	X	N 90°35'W	6.5'	182	PP	N 79°15'W	4.4.7'
50	I	N 88°35'W	5.4.5'	117	X	N 68°15'W	8.6'	183	PP	N 77°45'W	7.0.8'
51	I	N 79°0'W	6.5'	118	Y	S 63°30'W	2.9.5'	184	PP	N 80°35'W	10.2.6'
52	I	N 64°30'W	6.5.6'	119	Y	N 66°15'W	5.3'	185	PP	N 65°30'W	1.6.8.2'
53	I	N 60°15'W	7.3.5'	120	Y	N 87°25'W	9.5.5'	186	QQ	S 6°05'W	2.2.8.1'
54	I	N 67°0'W	8.4.5'	121	Z	S 12°0'W	7.2.5'	187	QQ	S 8°15'W	2.1.2.4'
55	I	N 69°30'W	9.9'	122	Z	S 30°0'W	5.8'	188	QQ	S 13°45'W	20.8.5'
56	J	S 89°0'W	3.3'	123	Z	S 75°15'W	4.8.5'	189	QQ	S 23°05'W	18.1.2'
57	J	N 67°15'W	4.6'	124	Z	S 89°45'W	4.0.5'	190	QQ	S 33°09'W	188.4'
58	J	N 80°15'W	7.5'	125	Z	N 76°45'W	4.5'	191	QQ	S 50°59'W	184.6'
59	J	N 72°45'W	8.7'	126	Z	N 67°15'W	6.1'	192	RR	S 45°15'W	3.4'
60	J	N 47°45'W	8.1.5'	127	Z	N 57°0'W	8.3'	193			
61	K	S 36°30'W	1.2.2'	128	AA	S 10°55'E	9.5'	194			
62	K	S 70°35'W	1.8'	129	AA	S 0°35'W	8.3.2'	195	SS	S 18°34'E	8.7.3'
63	K	S 70°35'W	3.3'	130	AA	S 20°35'W	6.1.1'	196	SS	S 2°52'W	8.1.3'
64	K	S 81°15'W	3.3'	131	AA	S 70°05'W	6.7.5'	197	SS	S 63°54'W	6.3.3'
65	L	N 85°45'W	2.6.6'	132	AA	S 83°45'W	7.7'	198	SS	S 89°45'W	8.6.8'
66	K	L 1°45'W	10.6'	133	BB	S 38°0'W	5.6'	199	SS	N 80°03'W	24.6'
67	K	N 19°05'W	1.5'	134	BB	S 8°05'W	6.7'	200	SS	N 77°55'W	114.25'

Field Book 47 Page 3



C.F. 1886 -



No. 552

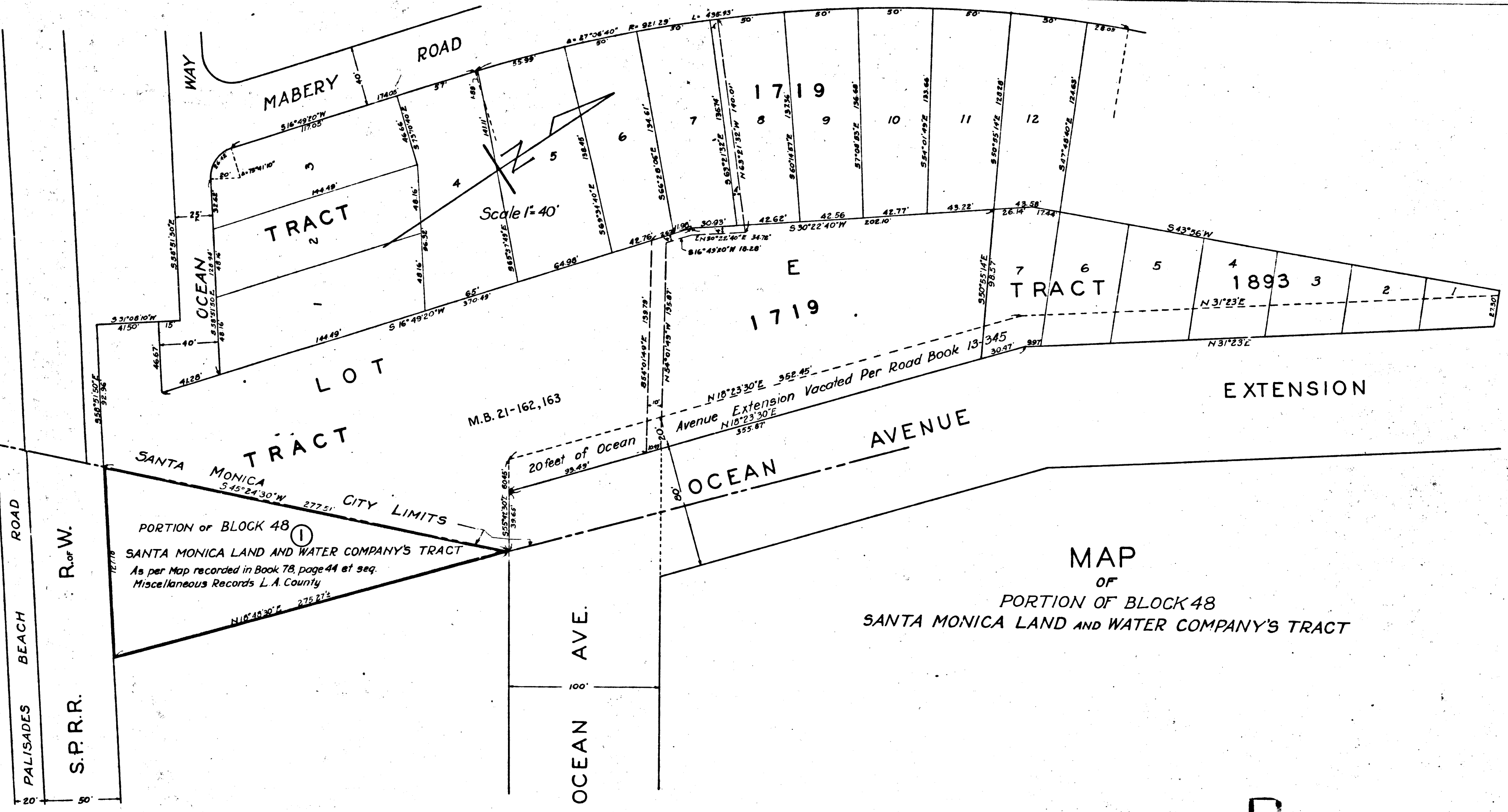
221

TABLE FOR TIE LINES TO ANGLE POINTS ON UPPER EDGE OF BLUFF OF LINDA VISTA PARK

Point/Transf. No.	Point	course	distance	Point/Transf. No.	Point	course	distance	Point/Transf. No.	Point	course	distance
1	A	S 39°46'E	2.1'	68	K	N 15°30'W	23.5'	135	CC	S 87°25'W	5.7'
2	A	S 45°15'W	1.0'	69	K	N 11°15'E	5.2'	136	DD	S 46°0'W	5.9'
3	B	S 33°0'E	3.7'	70	K	N 16°45'W	7.0.5'	137	DD	S 80°45'W	7.0'
4	B	S 8°0'W	1.7.5'	71	K	N 64°0'W	7.6.5'	138	EE	S 15°30'E	5.6.9'
5	B	S 77°45'E	2.4'	72	K	N 49°35'W	93.5'	139	EE	N 8°0'W	4.5.5'
6	B	N 66°45'W	1.9.5'	73	L	S 38°45'W	2.0.5'	140	FF	S 41°09'W	6.9'
7	B	N 66°45'W	1.0'	74	L	S 79°30'W	3.2'	141	FF	S 49°0'W	6.4'
8	B	N 1°15'W	2.5'	75	L	S 70°35'W	5.7'	142	FF	S 79°15'W	4.5.3'
9	C	S 45°15'W	4.6'	76	L	N 88°0'W	8.0.5'	143	FF	S 96°15'W	6.8'
10	C	N 39°25'W	2.0'	77	M	S 2°45'E	9.6'				
11	C	N 47°15'W	3.3'	78	M	S 4°25'E	7.9'	144	GG	S 28°41'W	4.5.3'
12	D	S 16°15'W	1.8.5'	79	M	S 15°15'E	4.9'	145	GG	S 53°21'W	4.2.5'
13	D	S 49°45'W	2.1'	80	M	N 85°35'W	6.9'	146	GG	S 75°31'W	4.4'
14	D	N 87°15'W	2.2.5'	81	M	N 75°15'W	6.4'	147	GG	N 87°39'W	4.5'
15	D	N 69°45'W	1.7'	82	M	N 70°15'W	8.1'	148	GG	N 80°45'W	3.5'
16	D	N 48°45'W	3.0'	83	M	N 76°05'W	9.6.5'	149	GG	N 86°39'W	7.7'
17	D	N 48°45'W	4.3'	84	N	S 5°45'W	4.7'	150	GG	N 78°09'W	9.5.5'
18	E	S 35°25'W	3.0'	85	N	S 13°30'W	2.7'	151	HH	S 29°19'E	9.3'
19	E	S 37°30'W	3.2.5'	86	N	S 59°25'W	1.3'	152	HH	S 20°24'E	8.8.5'
20	E	S 48°15'W	3.2.5'	87	N	S 67°25'W	2.9'	153	HH	N 85°34'W	7.8'
21	F	S 70°30'W	3.6'	88	N	N 66°25'W	5.4'	154	HH	N 76°19'W	8.2.5'
22	F	S 2°45'W	4.3'	89	N	N 87°0'W	6.8.5'	155	HH	N 69°19'W	7.9'
23	F	S 40°15'W	3.6.5'	90	O	S 35°45'E	6.9.5'	156	II	S 59°29'W	3.2'
24	F	S 81°15'W	1.7'	91	O	S 35°05'E	8.2.4'	157	II	S 67°15'W	5.2.7'
25	F	N 75°45'W	2.7'	92	O	S 2°25'E	1.4.3'	158	II	S 73°30'W	5.9.4'
26	F	N 68°15'W	4.7.5'	93	O	N 80°35'W	2.1.3'	159	II	N 84°34'W	8.5.2'
27	F	N 77°55'W	7.4'	94	O	N 61°25'W	5.9'	160	II	N 74°39'W	8.5'
28	G	S 72°45'W	4.8'	95	O	N 55°30'W	9.4'	161	II	S 2°05'E	5.2.4'
29	G	S 88°35'W	2.1'	96	P	N 49°55'W	1.5'	162	JJ	S 64°11'W	4.0.5'
30	G	S 87°45'W	7.3'	97	O	S 73°05'W	3.7'	163	JJ	N 88°39'W	4.5.4'
31	G	N 81°55'W	8.0.5'	98	R	S 57°45'W	6.6'	164	JJ	N 81°09'W	5.6.3'
32	G	N 72°15'W	7.1.5'	99	R	S 57°30'W	7.4'	165	JJ	N 74°09'W	9.5.3'
33	G	N 68°0'W	6.4'	100	R	S 84°45'W	9.0'	166	JJ	N 71°09'W	9.9.5'
34	G	N 59°35'W	7.4.5'	101	S	S 40°15'W	7.1'	167	KK	S 58°36'W	3.5.4'
35	G	N 62°45'W	9.0'	102	S	S 87°0'W	9.1'	168	KK	S 70°01'W	4.3.9'
36	H	S 35°25'W	5.0.5'	103	T	S 37°15'W	7.9'	169	KK	N 72°55'W	8.8.7'
37	H	S 71°0'W	5.5.5'	104	T	S 89°45'W	9.2.5'	170	LL	S 41°18'30"E	9.6.7'
38	H	N 83°30'W	6.8'	105	U	S 84°55'W	5.6.4'	171	MM	N 75°14'W	8.1'
39	H	N 65°05'W	9.1'	106	U	N 75°35'W	7.3'	172	NN	S 75°21'W	4.7.5'
40	I	S 0°30'W	5.7.5'	107	V	S 17°15'W	3.9'	173	OO	S 65°30'W	2.3.5'
41	I	S 10°35'W	4.5'	108	V	S 53°25'W	3.1.5'	174	OO	N 74°55'W	6.3.7'
42	I	S 9°45'W	2.0'	109	V	S 88°45'W	4.2.5'	175	OO	N 59°55'W	8.3.3'
43	I	S 40°15'W	2.3.5'	110	V	N 75°35'W	5.3.5'	176	OO	N 56°30'W	10.1.8'
44	I	S 37°55'W	3.7.5'	111	V	N 73°45'W	7.2.5'	177	PP	S 25°15'E	7.4.5'
45	I	S 50°0'W	4.0.5'	112	W	S 45°10'W	3.4'	178	PP	S 3°35'E	5.8.5'
46	I	S 64°35'W	3.9'	113	W	S 71°15'W	3.8.5'	179	PP	S 13°35'N	5.0.1'
47	I	S 76°45'W	3'	114	W	N 85°45'W	5.2'	180	PP	S 41°15'W	3.7.5'
48	I	N 87°35'W	3.4'	115	W	N 70°15'W	10.0.5'	181	PP	S 78°15'W	5.3.1'
49	I	S 89°25'W	4.3'	116	X	N 80°15'W	6.5'	182	PP	N 79°15'W	4.4.7'
50	I	N 88°35'W	5.4.5'	117	X	N 68°25'W	8.6'	183	PP	N 77°45'W	7.0.9'
51	I	N 72°0'W	6.2'	118	Y	S 63°30'W	2.9.5'	184	PP	N 80°35'W	1.0.2.6'
52	I	N 65°35'W	6.5.5'	119	Y	N 66°15'W	5.3'	185	PP	N 65°30'W	1.6.9.2'
53	I	N 60°15'W	7.3.5'	120	Y	N 57°25'W	9.5.5'	186	QQ	S 6°05'W	2.2.2.5'
54	I	N 67°0'W	8.4.5'	121	Z	S 12°0'W	7.2.5'	187	QQ	S 8°15'W	2.1.2.4'
55	I	N 69°30'W	9.9'	122	Z	S 30°0'W	5.8'	188	QQ	S 13°25'W	2.0.5.5'
56	J	S 89°0'W	3.3'	123	Z	S 75°15'W	4.8.5'	189	QQ	S 23°05'W	1.8.1.2'
57	J	N 67°15'W	4.6'	124	Z	S 89°45'W	4.0.5'	190	QQ	S 35°05'W	1.8.0.4'
58	J	N 80°15'W	7.5'	125	Z	N 76°45'W	4.5'	191	QQ	S 50°55'W	1.8.4.6'
59	J	N 72°45'W	8.7'	126	Z	N 67°15'W	6.1'	192	RR	S 45°15'W	3.4'
60	J	N 49°45'W	8.1.5'	127	Z	N 57°0'W	8.3'	193			
61	K	S 36°30'W	1.2.3'	128	AA	S 10°55'E	9.5'	194			
62	K	S 70°35'W	1.8'	129	AA	S 0°35'W	8.3.5'	195	SS	S 18°34'E	8.7.3'
63	K	S 70°35'W	3.3'	130	AA	S 20°35'W	6.1'	196	SS	S 2°52'W	8.1.3'
64	K	S 81°15'W	3.3'	131	AA	S 70°05'W	6.7.5'	197	SS	S 63°54'W	6.3.3'
65	K	N 85°15'W	2.6.5'	132	AA	S 83°45'W	7.7'	198	SS	S 89°45'W	8.6.8'
66	K	N 1°35'W	1.0.5'	133	BB	S 38°0'W	5.6'	199	SS	N 80°03'W	3.4.6'
67	K	N 19°05'W	1.5'	134	BB	S 8°05'W	6.7'	200	SS	N 77°35'W	11.4.3'

8

C.F. 1886 -



MAP
OF
PORTION OF BLOCK 48
SANTA MONICA LAND AND WATER COMPANY'S TRACT

9
C.F. 1886 -

No. 552

Point No.	Point	COURSE
1	A	S 39° 46' E
2	A	S 45° 15' W
3	B	S 33° 0' E
4	B	S 8° 0' W
5	B	S 77° 45' E
6	B	N 66° 45' W
7	B	N 66° 45' W
8	B	N 1° 15' W
9	C	S 48° 15' W
10	C	N 39° 25' W
11	C	N 47° 15' W
12	D	S 16° 15' W
13	D	S 49° 45' W
14	D	N 87° 15' W
15	D	N 69° 45' W
16	D	N 48° 45' W
17	D	N 46° 45' W
18	F	S 35° 25' W
19	F	S 37° 30' W
20	F	S 48° 15' W
21	F	S 70° 30' W
22	F	S 74° 45' W
23	F	S 40° 15' W
24	F	S 81° 15' W
25	F	N 78° 45' W
26	F	N 87° 15' W
27	F	N 77° 30' W
28	G	S 74° 45' W
29	G	S 88° 35' W
30	G	S 87° 45' W
31	G	N 81° 55' W
32	G	N 72° 15' W
33	G	N 68° 0' W
34	G	N 59° 35' W
35	G	N 62° 45' W
36	H	S 35° 25' W
37	H	S 71° 0' W
38	H	N 87° 30' W
39	H	N 65° 05' W
40	I	S 0° 50' W
41	I	S 40° 45' W
42	I	S 9° 45' W
43	I	S 40° 15' W
44	I	S 37° 55' W
45	I	S 50° 0' W
46	I	S 64° 35' W
47	I	S 76° 45' W
48	J	N 87° 30' W
49	J	S 89° 45' W
50	J	N 88° 35' W
51	J	N 72° 0' W
52	J	N 64° 55' W
53	J	N 60° 15' W
54	J	N 67° 0' W
55	J	N 69° 30' W
56	J	S 89° 0' W
57	J	N 67° 15' W
58	J	N 80° 15' W
59	J	N 72° 45' W
60	J	N 79° 15' W
61	K	S 36° 30' W
62	K	S 70° 30' W
63	K	S 70° 30' W
64	K	S 81° 15' W
65	K	N 82° 15' W
66	K	L 44° 45' W
67	K	N 19° 05' W

221

TIE LINES