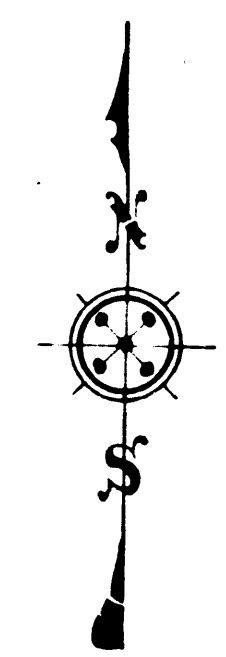
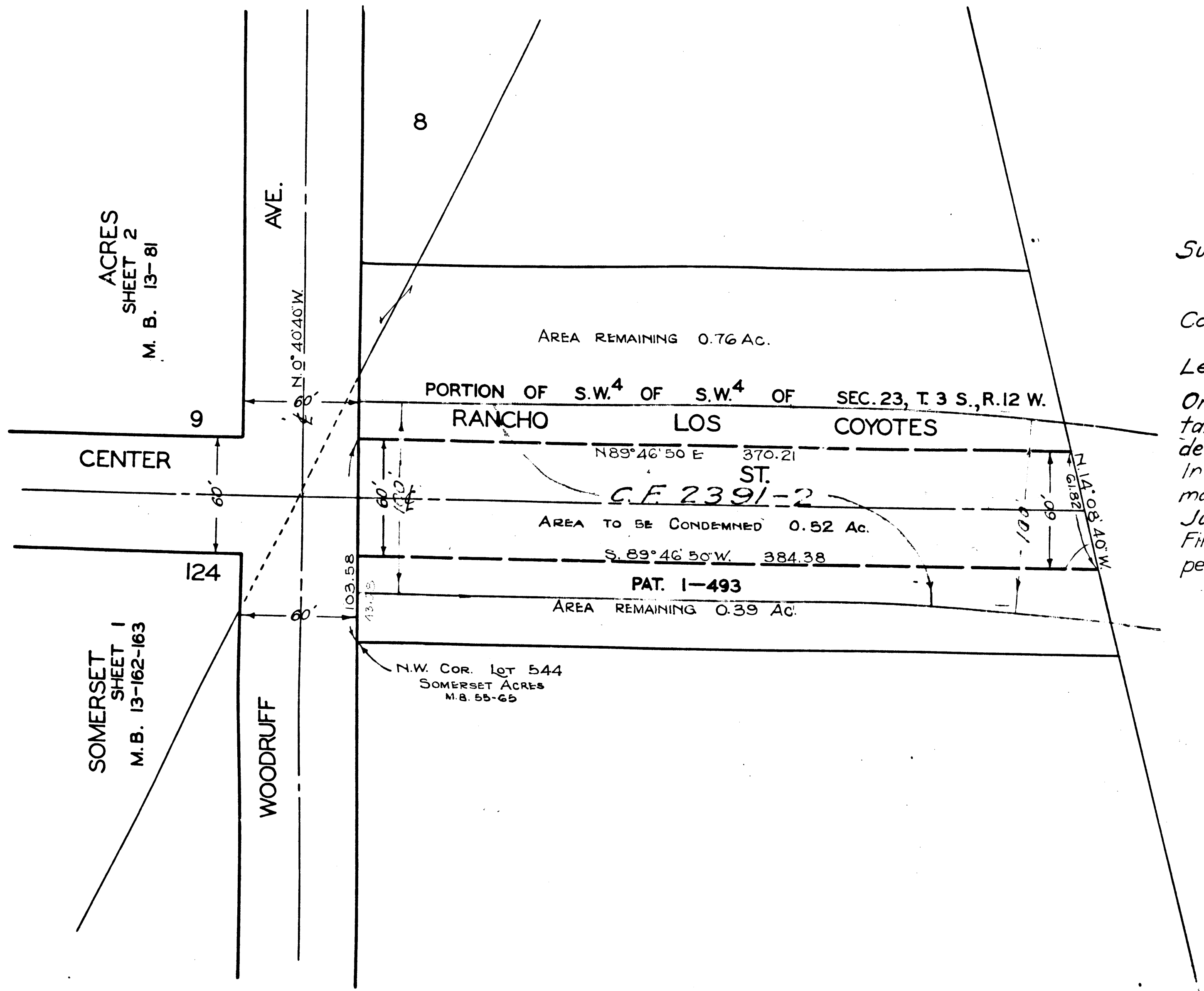


MAP SHOWING  
 LAND TO BE CONDEMNED  
 FOR  
 CENTER STREET  
 SCALE 1"=50'  
 SEPT. 24, 1930

A-483  
 Shf. 33  
 Superior Court Case No. 325510  
 Suit for Condemnation  
 Filed July 28<sup>th</sup> 1931  
 County of Los Angeles, Pltff.  
 Vs  
 Lee Patrick et al., Defendants.  
 Order authorizing Plaintiff to  
 take immediate possession ren-  
 dered Aug. 11<sup>th</sup> 1931.  
 Interlocutory judgment as per  
 map, rendered Dec. 29<sup>th</sup> 1931.  
 Judg. Bk. 799-294  
 Final judgment in favor of Pltff. as  
 per this map rendered Feb. 10, 1932  
 D:23-297, Jd. Bk 812-120  
 D:23-194, O.R. 11330-178



LEGEND  
 PORTION TO BE CONDEMNED  
 SHOWN COLORED RED



ACRES  
 SHEET 2  
 M. B. 13-81

SOMERSET  
 SHEET 1  
 M. B. 13-162-163

WOODRUFF  
 AVE.

CENTER  
 STREET

8

9

124

AREA REMAINING 0.76 Ac.

PORTION OF S.W.<sup>4</sup> OF S.W.<sup>4</sup> OF SEC. 23, T. 3 S., R. 12 W.  
 RANCHO LOS COYOTES

N 89° 46' 50" E 370.21'  
 ST. C.F. 2391-2

AREA TO BE CONDEMNED 0.52 Ac.

S 89° 46' 50" W 384.38'

PAT. 1-493

AREA REMAINING 0.39 Ac.

N.W. COR. LOT 544  
 SOMERSET ACRES  
 M. B. 55-65

C.F. 1894 -