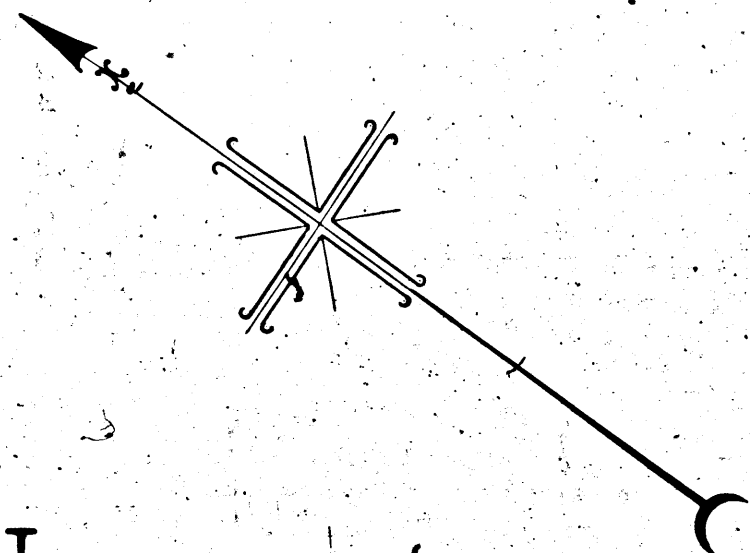


Sepulveda Blvd (W.S.) bet. Ohio Ave & Pico Blvd
File No. 537 (1931) Order No. 79234

Sh: 2:
Superior Court Case No. 327958
Suit for Condemnation
Filed Sept. 19th 1931
City of Los Angeles, Plaintiff
vs
Florence Smurr et al., Defendants



TRACT

NO

5609

SHEETS 1, 2 AND 3

Maps, Book 60, Pages 34, 35 and 36

(Formerly Military Avenue)

Patents, Book 3, Page 30

Condemnation Proceedings pending under
Ordinances Nos. 63517 and 64197

C.F. 2012

AVENUE

MISSISSIPPI AVENUE

LOUISIANA AVENUE

TENNESSEE AVENUE

BOULEVARD

MISSISSIPPI AVENUE

LOUISIANA AVENUE

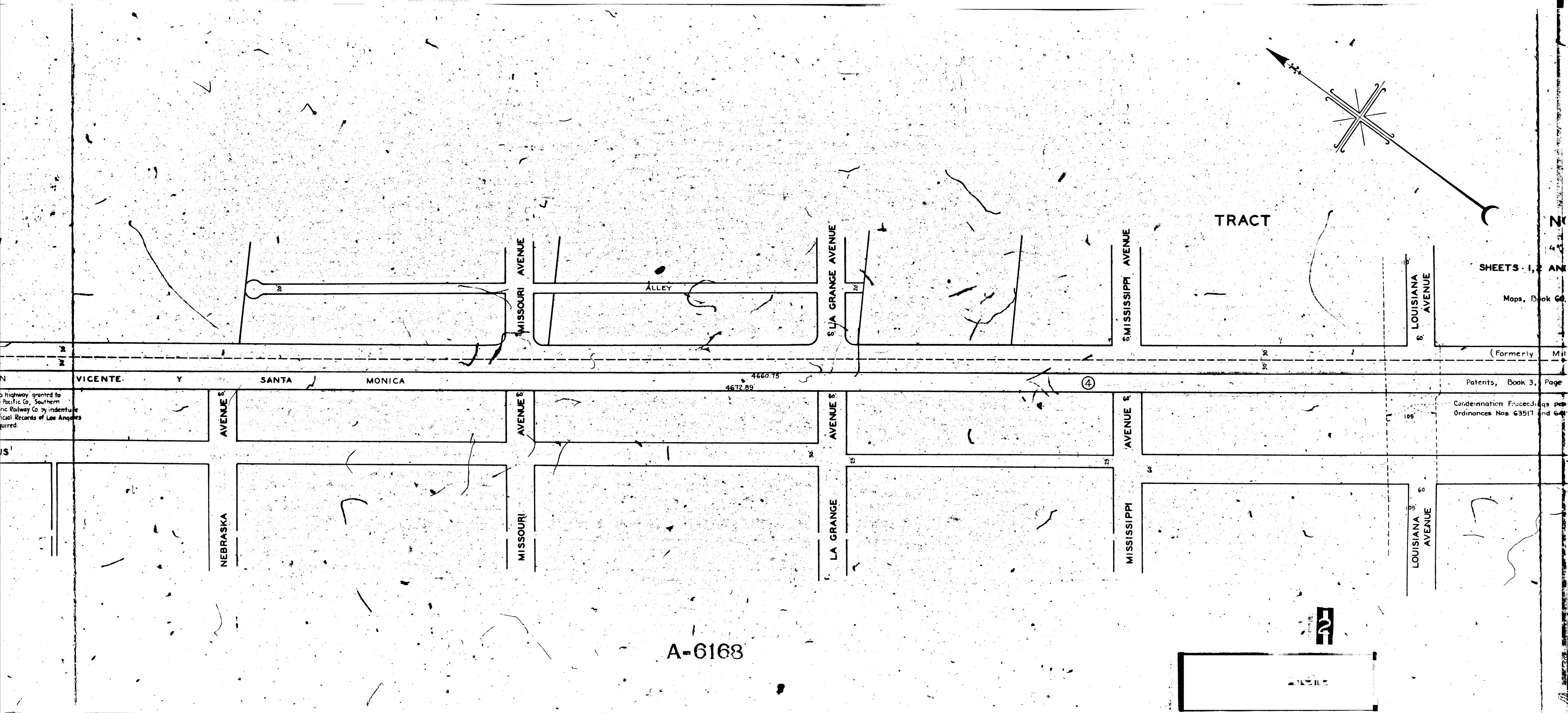
TENNESSEE AVENUE

PICO

MAP
SHOWING LAND TO BE CONDEMNED FOR
THE WIDENING OF
SEPULVEDA BOULEVARD
ALONG THE SOUTHWESTERLY LINE THEREOF
FROM THE NORTHWESTERLY BOUNDARY OF THE
CITY OF LOS ANGELES
AT
OHIO AVENUE
TO
PICO BOULEVARD
IN THE CITY OF LOS ANGELES CALIF
IN ACCORDANCE WITH ORDINANCE NO 69964
J J JESSUP CITY ENGINEER AUGUST 1931
SCALE 1 INCH = 100 FEET

Note: Land to be condemned shown colored red.
Figures in circles indicate the parcel numbers as set forth
in Paragraph V of the complaint.

A-6168



TRACT

SHEETS 1, 2 AND 3

Maps, Book 6

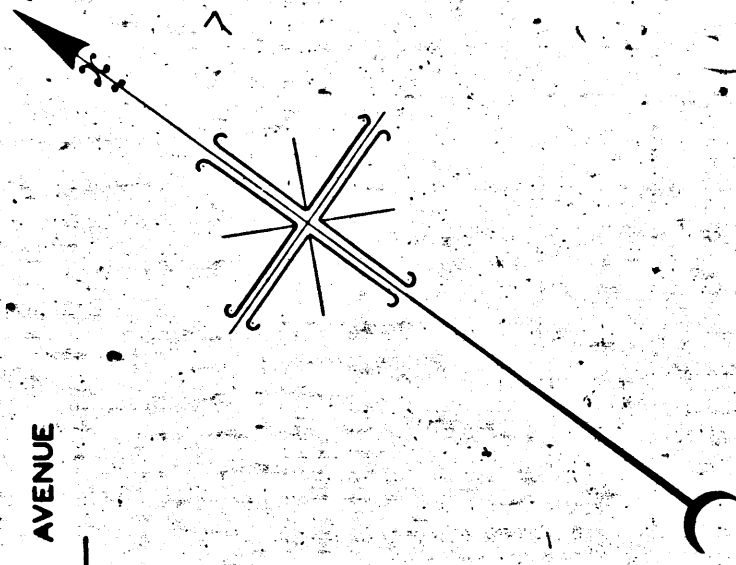
(Formerly) Mill

Patents, Book 3, Page

Ordination Proceedings per Ordinances Nos 63517 and 644

A-6168

highway granted to Pacific Co, Southern Railway Co. Ordination Proceedings per Ordinances Nos 63517 and 644



Boundary of the City of Los Angeles

OHIO AVENUE

MASSACHUSETTS AVENUE

MISSOURI AVENUE

SEPULVEDA

ALLEY

SANTA MONICA BOULEVARD

SANTA MONICA BOULEVARD

ALLEY

C.F. 2012 PART ① OF 1177.40 1170.08 RANCHO

SAN VICENTE Y SANTA MONICA

BARRETT VILLA

TRACT

Right to construct and maintain a highway granted to the city of Los Angeles by Southern Pacific Co., Southern Pacific Railroad Co and Pacific Electric Railway Co by indenture recorded in Book 4819 Page 70, Official Records of Los Angeles County. Other interests to be acquired.

PONTIUS AVENUE

AVENUE

PONTIUS AVENUE

AVENUE

AVENUE

Miscellaneous Records, Book 70,

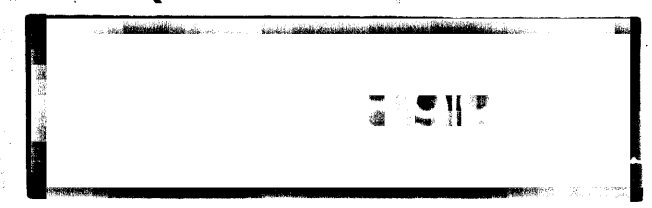
Pages 32, 33, 34 and 35

SANTA MONICA BOULEVARD

Map showing corner of 1st St. and
Tract Map Book 5 Page 108

NEBRASKA

MISSOURI



A.