

EXHIBIT "A"
STREET OPENING DISTRICT NO. 105
OF THE COUNTY OF LOS ANGELES
FOR
THE ACQUIRING AND WIDENING OF
WALNUT TERRACE, ET AL.

MAP SHOWING PROPERTY TO BE ACQUIRED IN ACCORDANCE WITH THE PROVISIONS
OF THE COUNTY STREET OPENING ACT OF 1923. APPROVED MAY 11, 1923.

SCALE: 1" = 50'

SEPTEMBER, 1931

J. E. ROCKHOLD — COUNTY SURVEYOR

SUBMITTED:
Alfred Jones
ALFRED JONES,
CHIEF DEPUTY

APPROVED:
J. E. Rockhold
J. E. ROCKHOLD,
COUNTY SURVEYOR

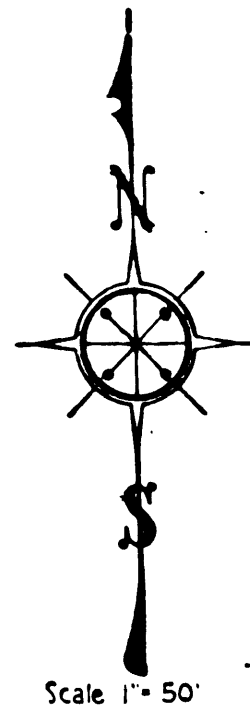
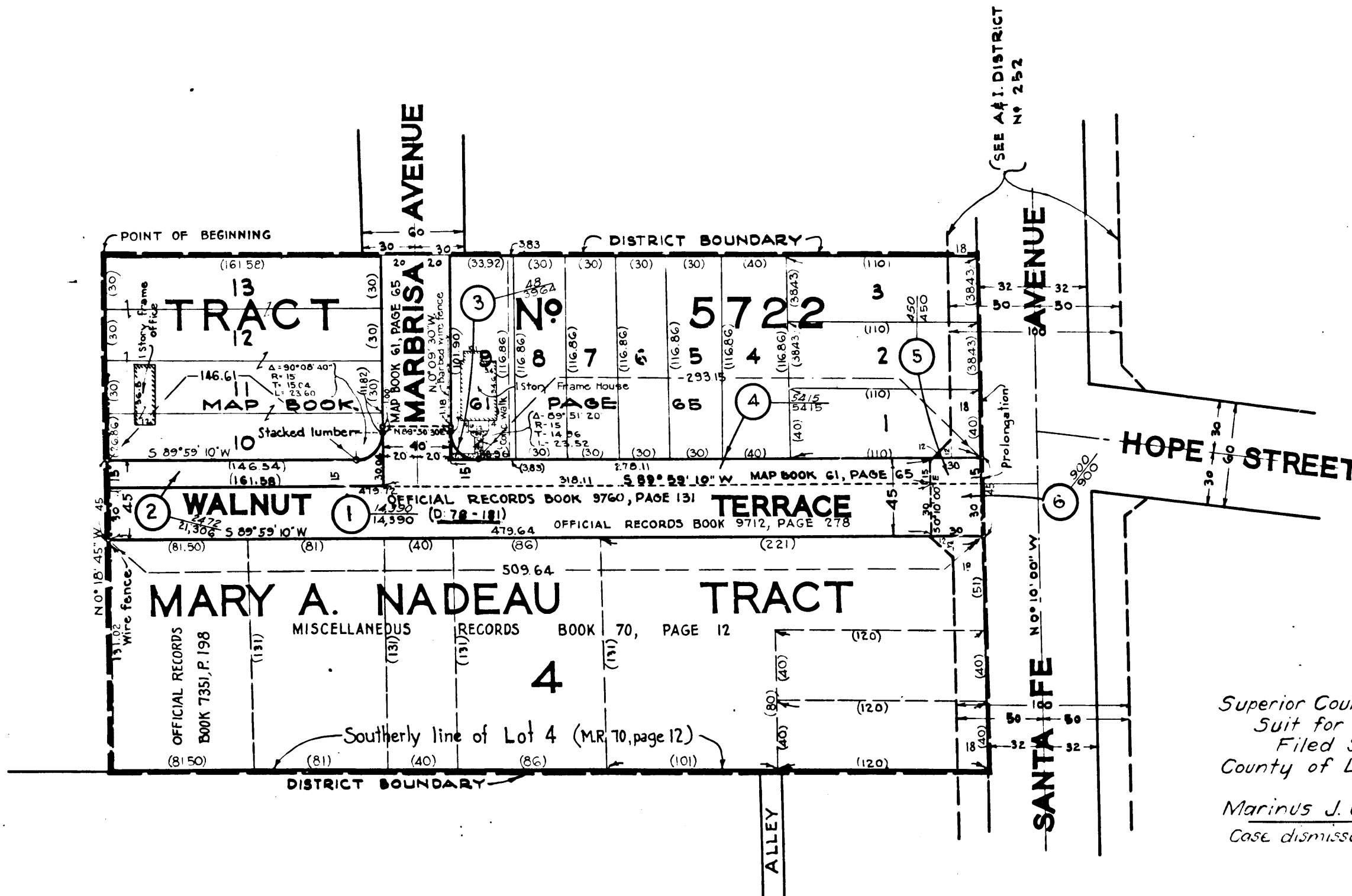
APPROVED AS TO FORM:
EVERETT W. MATTOON, COUNTY COUNSEL

BY *N. B. Kessler*
DEPUTY COUNTY COUNSEL

LEGEND

PORTION COLORED RED SHOWS LOCATION. GENERAL ROUTE
AND TERMINI OF LAND IN WHICH AN EASEMENT FOR
PUBLIC HIGHWAY PURPOSES IS SOUGHT TO BE ACQUIRED.
NUMBERS IN CIRCLES INDICATE PARCELS SOUGHT TO BE CONDEMNED.
THE PARCELS ARE DESCRIBED IN PARAGRAPH VII OF THE COMPLAINT.
FIGURES SHOWN IN PARENTHESES () ARE EITHER RECORD
DISTANCES OR ARE CALCULATED FROM RECORD DISTANCES.
FIGURES SHOWN THUS:
0,000 INDICATE AREA TO BE ACQUIRED. IN SQUARE FEET.
00,000 INDICATE AREA OF HOLDING. INCLUDING AREA TO
BE ACQUIRED. IN SQUARE FEET.

Sht-357
Superior Court Case No. 327516
Suit for Condemnation
Filed Sept. 10th 1931
County of Los Angeles, Plff.
Vs
Marinus J. Christensen et al., Def.
Case dismissed July 14, 1930.



S.O. DISTRICT NO. 105	
SHEET NO. 1 OF 1 SHEET	
DRAWN BY	Frederick Gehbart Aug. 1930
TRACED BY	Frederick Gehbart Aug. 1930
CHECKED BY	Clifford Hughes Sept. 1930
REVISED	
C.S. INDEX MAP NO. 35	

C.F. 1900-