

EXHIBIT "A"
**STREET OPENING DISTRICT NO. 107
OF THE COUNTY OF LOS ANGELES**

FOR
**THE ACQUIRING, OPENING, WIDENING, AND EXTENDING OF
LOTUS AVENUE, ET AL.**

MAP SHOWING PROPERTY TO BE ACQUIRED, IN ACCORDANCE WITH THE PROVISIONS
OF THE COUNTY STREET OPENING ACT OF 1923, APPROVED MAY 11, 1923.
SCALE: 1"=40' SEPTEMBER, 1931

J. E. ROCKHOLD - COUNTY SURVEYOR

SUBMITTED:

Alfred Jones
ALFRED JONES,
CHIEF DEPUTY.

APPROVED:

J. E. Rockhold
J. E. ROCKHOLD,
COUNTY SURVEYOR.

APPROVED AS TO FORM:
EVERETT W. MATTOON, COUNTY COUNSEL

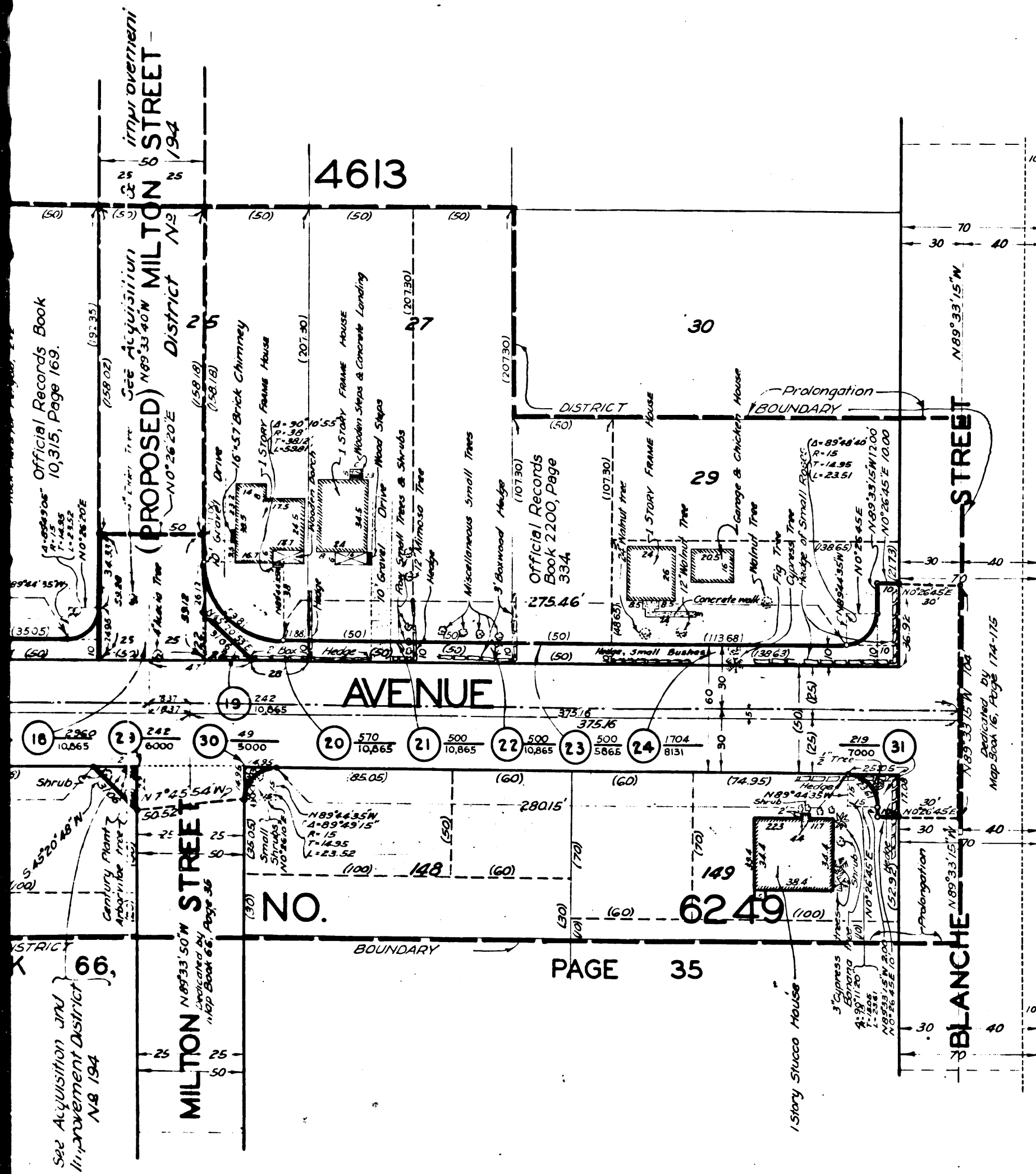
W. H. Kesson
DEPUTY COUNTY COUNSEL

LEGEND

PORTIONS COLORED RED OR GREEN SHOW LOCATION,
GENERAL ROUTE, AND TERMINI OF LAND IN WHICH AN
UNQUALIFIED EASEMENT FOR PUBLIC HIGHWAY
PURPOSES IS SOUGHT TO BE ACQUIRED.
PORTIONS COLORED RED SHOW LAND IN WHICH THE
PUBLIC HAS NO EASEMENT FOR HIGHWAY PURPOSES.
PORTIONS COLORED GREEN SHOW LAND USED
BY THE PUBLIC FOR HIGHWAY PURPOSES.
NUMBERS IN CIRCLES INDICATE PARCELS SOUGHT TO BE CONDEMNED.
THE PARCELS ARE DESCRIBED IN PARAGRAPH VII OF THE COMPLAINT.
FIGURES SHOWN IN PARENTHESES () ARE EITHER RECORD
DISTANCES OR ARE CALCULATED FROM RECORD DISTANCES.
FIGURES SHOWN THUS:
0.000 INDICATE AREA TO BE ACQUIRED, IN SQUARE FEET.
00,000 INDICATE AREA OF HOLDING, INCLUDING AREA
TO BE ACQUIRED, IN SQUARE FEET.

Sht. 44
Superior Court Case No. 327897
Suit for Condemnation
Filed Sept. 18th 1931
County of Los Angeles, Plff.
vs
Bank of America National Trust
& Savings Association et al, Def.
Case dismissed July 14, 1936.

TRACT
SHEET NO. 2
NO. 8616
LOTUS AVENUE
MAP BOOK 112,
PAGES 85 TO 88 INC.



Official Records Book
10,315, Page 169.

See Acquisition and
Improvement District
No. 154

PAGE 35

S. O. DISTRICT NO. 107	
SHEET NO. 1 OF 1 SHEET	
DRAWN BY	DEC. 1929
TRACED BY	DEC. 1929
CHECKED BY	DEC. 1929
REVISED	
C.S. INDEX MAP NO. 44	

C.F. 1901 -

TRACT

NO.

4613

MAP BOOK 50,

PAGE 17

Improvement
& Acquisition
(PROPOSED) No. 3340W. MILTON STREET
District No. 25

See Acquisition and Improvement District No. 194

Official Records Book 10,315, Page 168.

Official Records Book 2200, Page 394.

Official Records Book 2200, Page 394.

Official Records Book 2200, Page 394.

Official Records Book 2200, Page 394.

Official Records Book 2200, Page 394.

Official Records Book 2200, Page 394.

Official Records Book 2200, Page 394.

Official Records Book 2200, Page 394.

Official Records Book 2200, Page 394.

LOTUS

AVENUE

MAP BOOK 67,

PAGE 28

MAP BOOK 66,

PAGE 35

LOFIELD
Map Book 67, Page 28

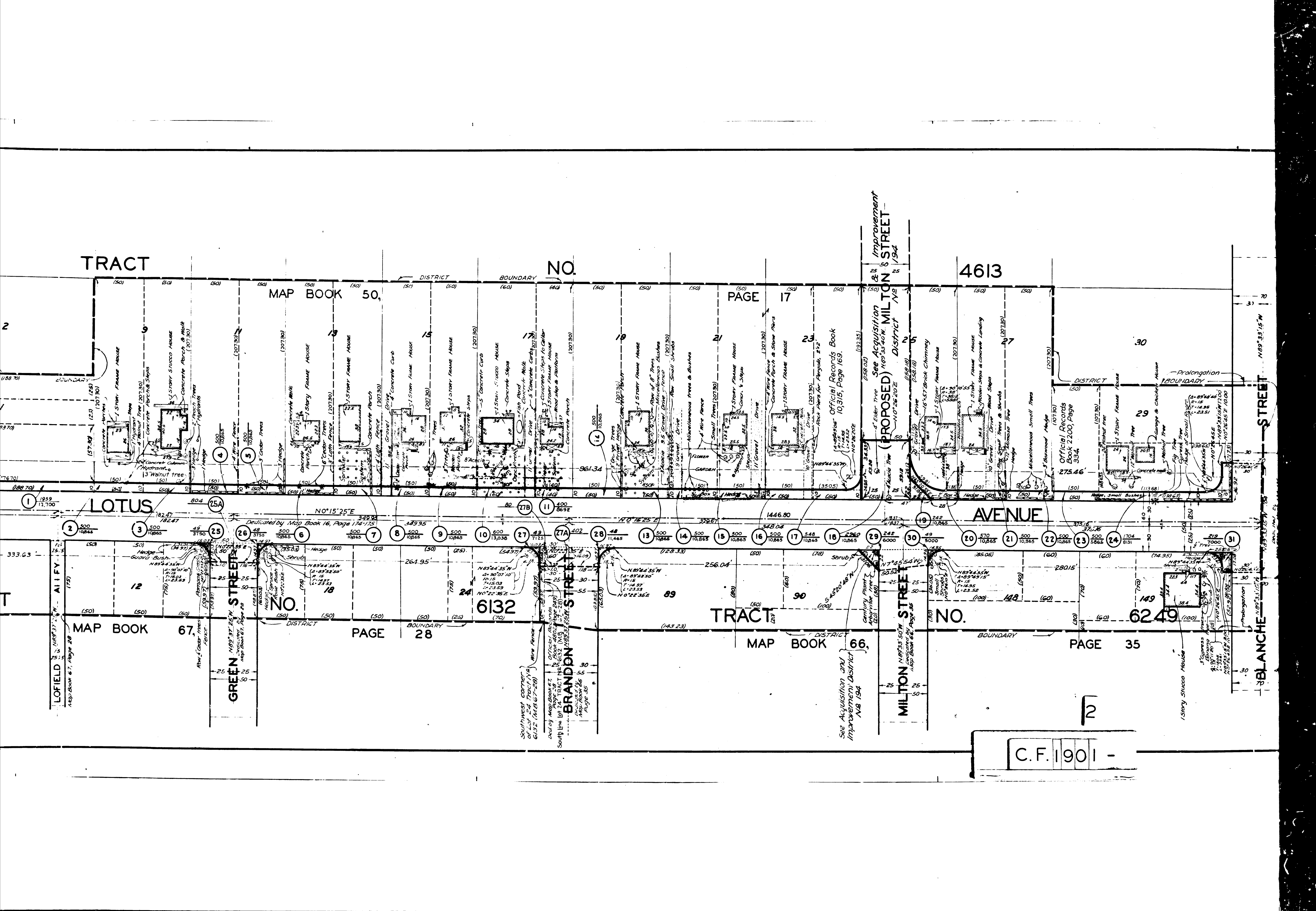
GREEN STREET
Map Book 67, Page 28

BRANDON STREET
Map Book 66, Page 35

MILTON STREET
Map Book 66, Page 35

BLANCHE STREET
Map Book 66, Page 35

C.F. 1901 -



WMCO
PLANNING

957

H.A.U.S.

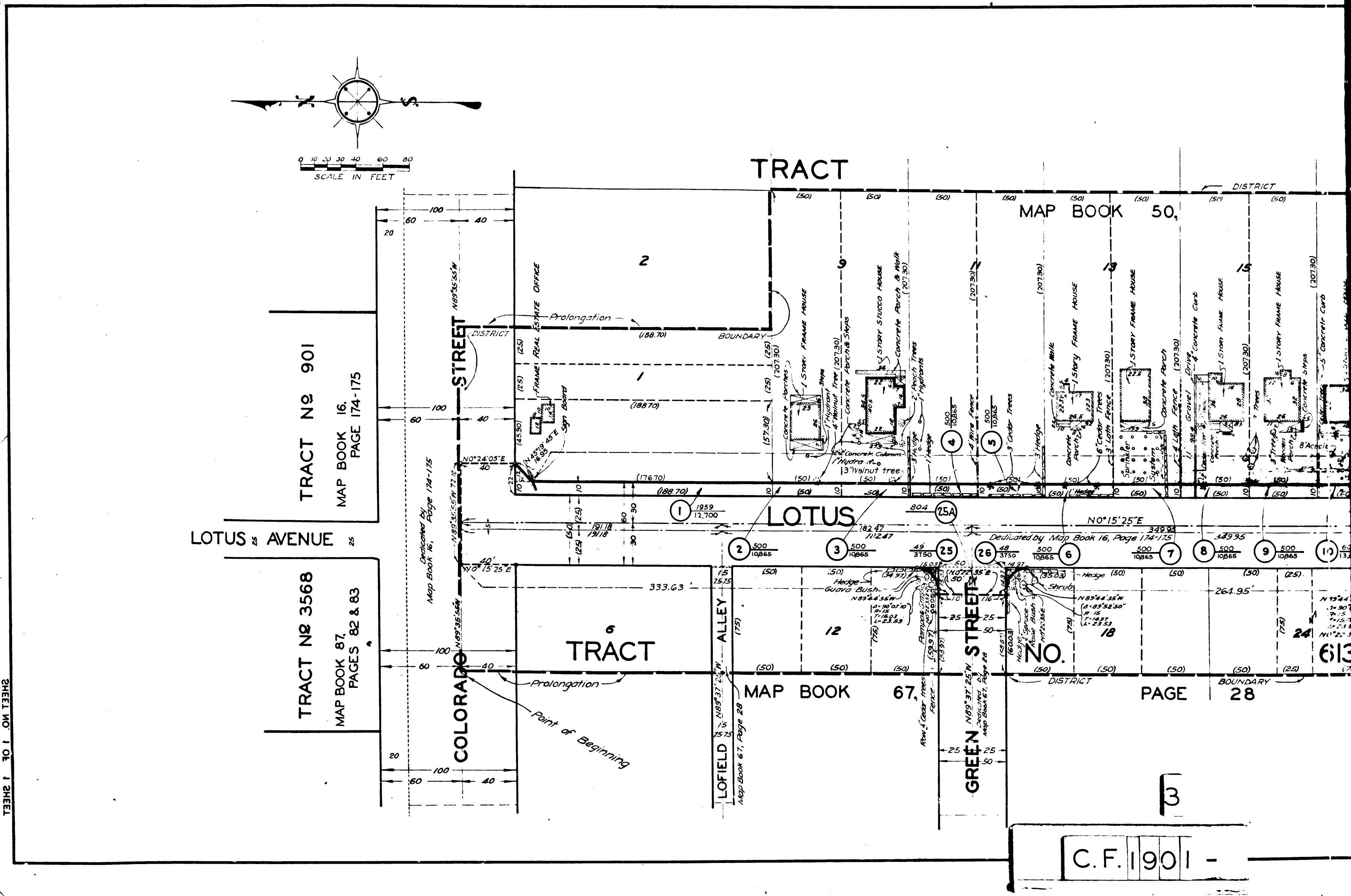
WMCO
PLANNING

101

SHEET NO. 1 OF 1 SHEET
CONDENSATION -- DISTRICT MAP
TOTAL V.A.E. BY BRANCH 21 AND SECTION 21
2.0 DISTRICT NO.

101

SHEET NO. 1 OF 1 SHEET
CONDENSATION -- DISTRICT MAP
TOTAL V.A.E. BY BRANCH 21 AND SECTION 21
2.0 DISTRICT NO.



C.F. 1901 -