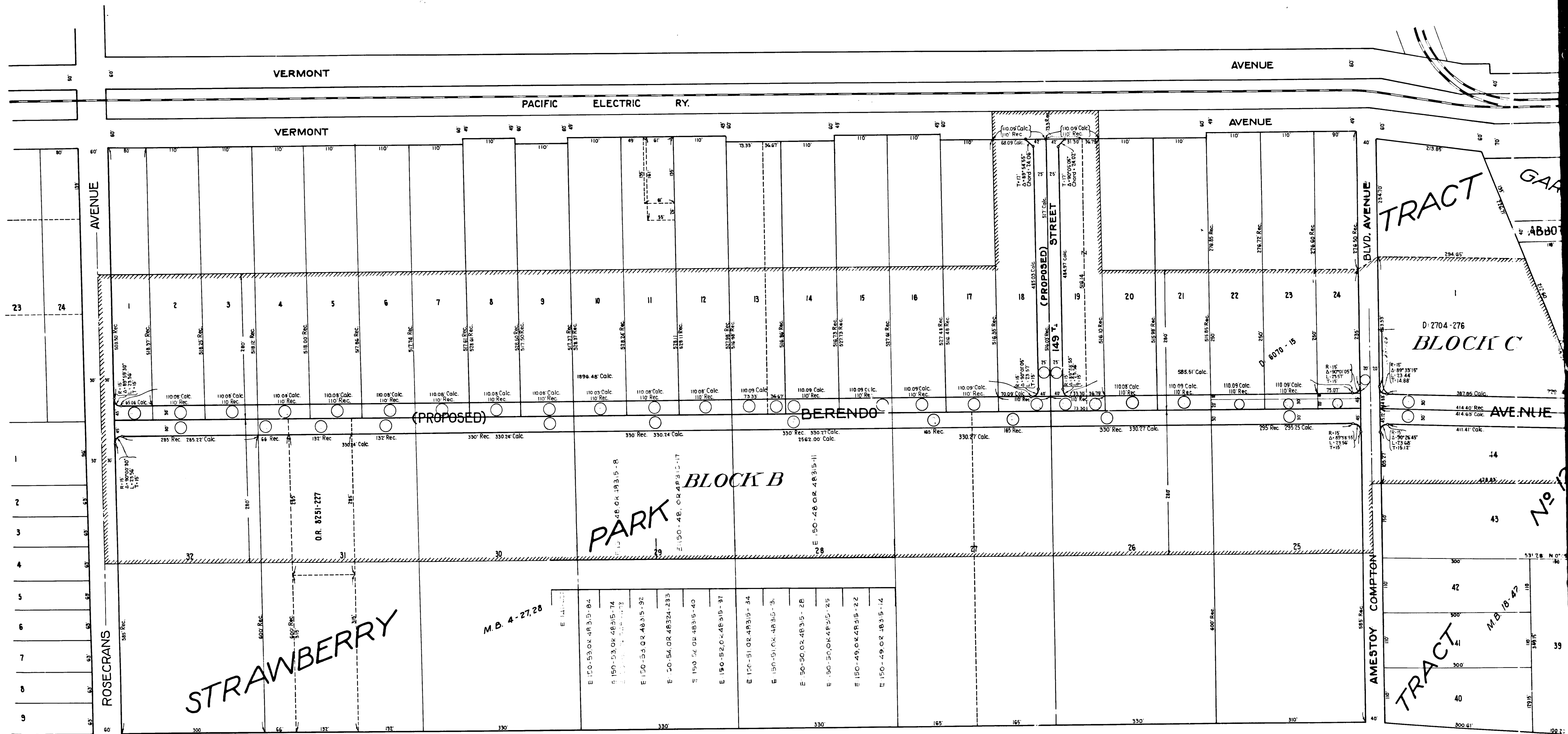


*Sht. 26*  
 Superior Court Case No. - 330458  
 Suit for Condemnation  
 Filed November 5<sup>th</sup> 1931  
 City of Gardena, Plaintiff -  
 Vs.  
 Sara H. Irvine et al. Defendants.  
*Interlocutory judgment as per  
 map, rendered Sept. 20, 1933,  
 Jud. Ek: 870-363*  
*Final judgment in favor of Pltff.  
 as per map rendered Dec. 15, 1937*  
 E 23-1, O.R. 15624 32

- NOTES:-
- 1- Hatched Lines show boundary of Assessment District.
  - 2- Shaded Area shows Land to be Acquired.
  - 3- Circled Letters show parcels of Land to be Acquired and correspond to Title Company designation of parcels and descriptions.

**EXHIBIT "C"**  
**CITY OF GARDENA**  
 OFFICE OF CITY ENGINEER  
 MAP SHOWING ASSESSMENT DISTRICT AND LAND TO BE ACQUIRED  
 FOR THE OPENING OF  
**BERENDO AVENUE**  
 ROSECRANS AVE. TO RIVERSIDE - REDONDO BLVD.  
**149TH STREET**  
 VERMONT AVE. TO BERENDO AVE.  
 DATE APRIL 1931      BARNETT & STEELE  
 BY HAB & B.B.      ENGINEERS  
 FOR THE CITY OF GARDENA      DRAWING NUMBER  
102

C.F. 1906 -



2

C.F. 1906 -

