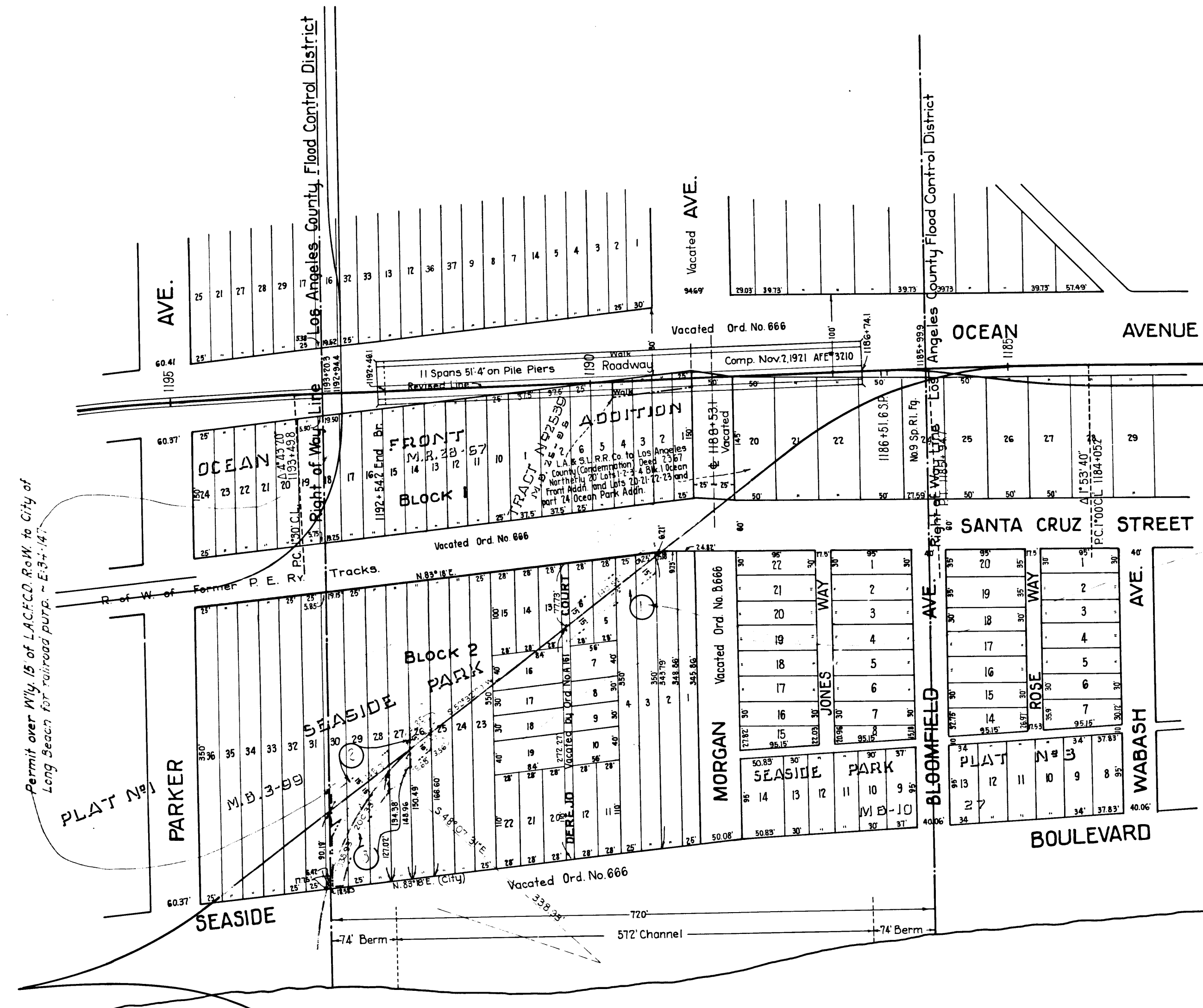


0
2
4
6
8
10
12
14
16
18
20
22
24
26
28
30
32
34
36
38
40
42
44
46
48
50
52
54
56
58
60
62
64
66
68
70
72
74
76
78
80
82
84
86
88
90

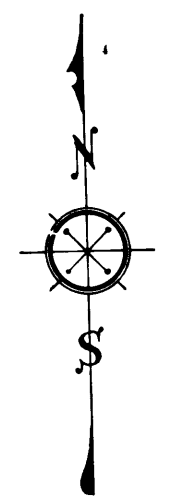


Sht. 30
 Superior Court Case No. L.B.-C-32
 Suit for Condemnation -
 Filed Feb. 3rd 1926
 City of Long Beach, Plaintiff,
 Vs.
 George D. Howland et al., Def.
 Interlocutory decree as to Parcels 1,
 2 & 3 rendered Dec. 3, 1931, J.B. 799-183.
 Final judgment in favor of Plaintiff, as
 per map, rendered March 17th, 1932.
 D:21-217 O.R. 11397-392

Portion tinted purple to be condemned by City of Long Beach
 Ord. 170, OR 17479-97

EXHIBIT "B"

Portion tinted purple to be condemned for public
 railroad purpose



C.F. 1907 -