

100 TH ST (CENTURY BLVD) ALAMEDA ST
TO FIGUEROA ST
CHARGE NO. 69226 FILE NO. 4629-1929

TAJAUTA

SUBDIVISION

PORTION OF

OF

RANCHO

DISTRICT COURT CASE NO. 1200
CLERKS FILED MAP NO. 63

FOR CONTINUATION WESTERLY
SEE SHEET NO. 1

SAN ANTONIO

PORTION OF

PATENTS BOOK I PAGE 389

S NINETY-SEVENTH
N 67° 04' 15" E 33.18'

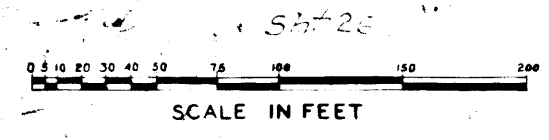
LAUREL STREET

STREET

STREET

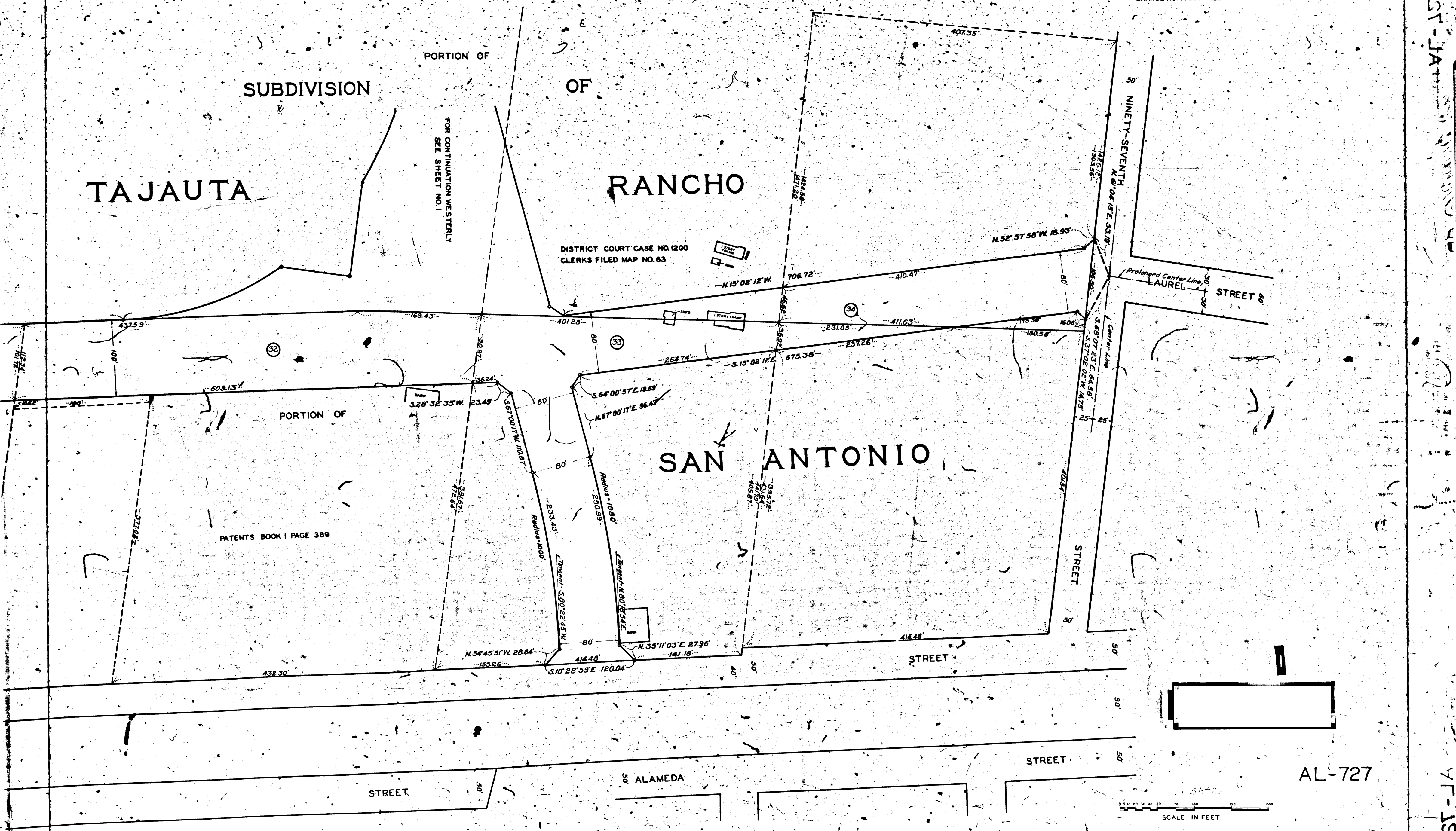
ALAMEDA

STREET



AL-727

157-JA...
AL-727



SUBDIVISION

TAJAUTA

PORTION OF

OF

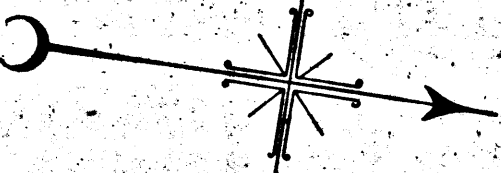
FOR CONTINUATION WESTERLY
SEE SHEET NO. 1

DISTRICT
CLERKS OFFICE

ALLEY

Boundary Line of the City of Los Angeles
as Established May 29, 1926 and described
in Ordinance No. 54687 of the City of Los Angeles

Boundary Line of the
County of Los Angeles



ONE HUNDRED THIRD

AVENUE

Prolonged Line

Boundary Line of the City of Los Angeles
as Established May 29, 1926 and described
in Ordinance No. 54687 of the City of Los Angeles

PORTION OF

PATENTS BOOK 1 PAGE 389

SAN ANTONIO

RANCHO

Boundary Line of the City of Los Angeles
as Established May 29, 1926 and described
in Ordinance No. 54687 of the City of Los Angeles

STREET

ALAMEDA

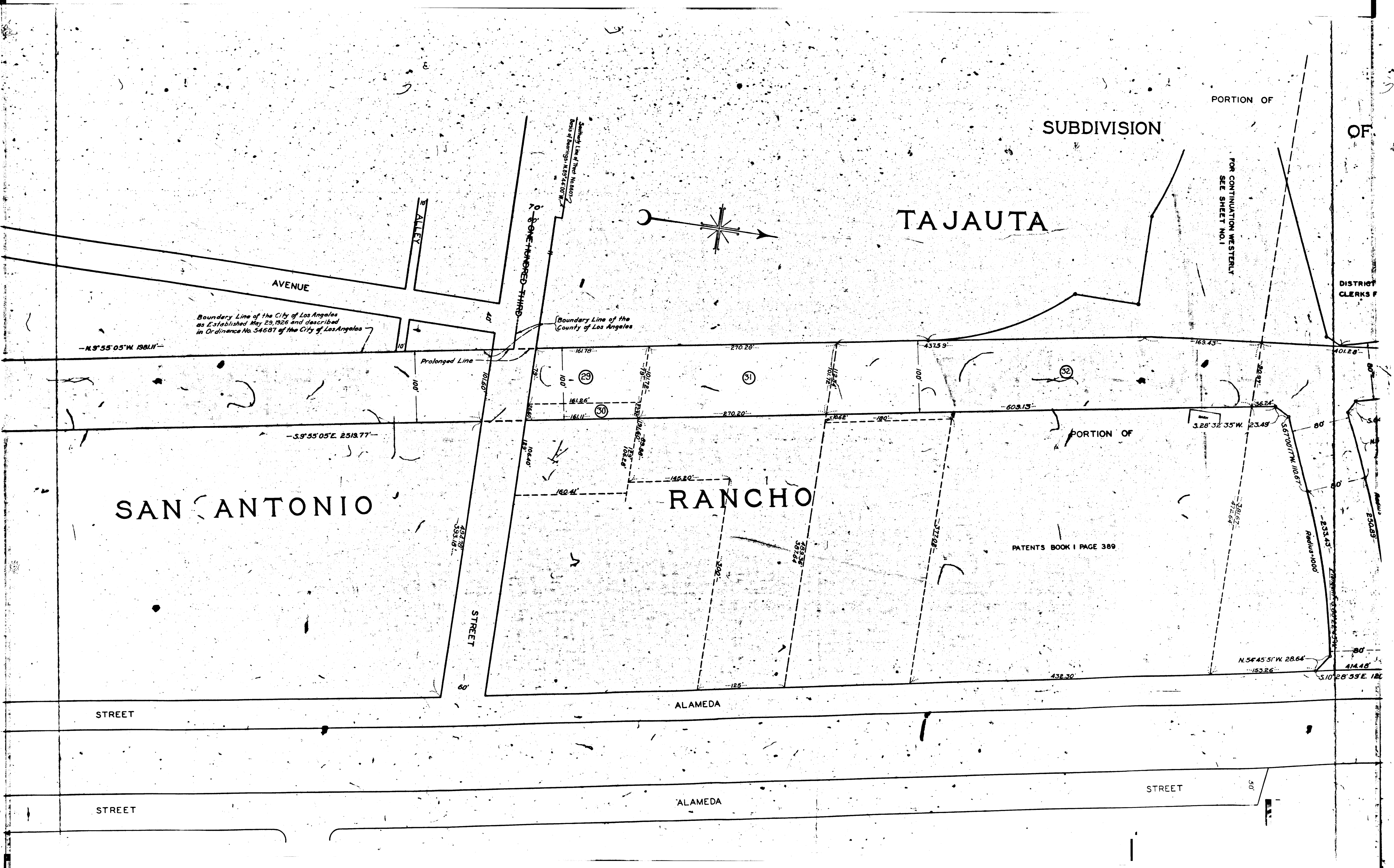
Boundary Line of the City of Los Angeles
as Established May 29, 1926 and described
in Ordinance No. 54687 of the City of Los Angeles

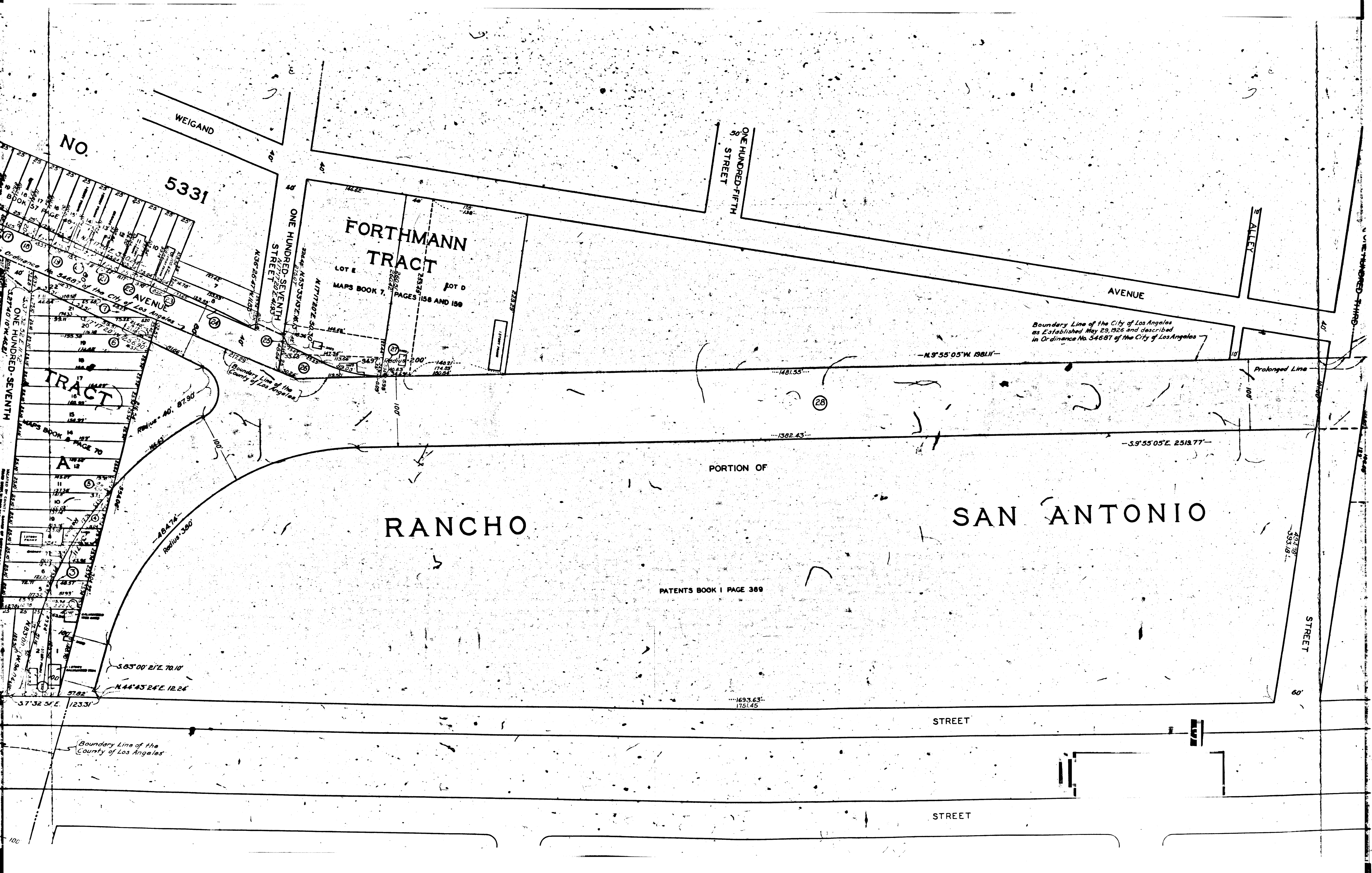
STREET

STREET

ALAMEDA

STREET





Boundary Line of the City of Los Angeles
as Established May 29, 1926 and described
in Ordinance No. 54687 of the City of Los Angeles

$-N. 9^{\circ} 55' 05'' W. 1381.11'$

$-S. 9^{\circ} 55' 05'' E. 2513.77'$

PORTION OF

RANCHO

SAN ANTONIO

PATENTS BOOK 1 PAGE 389

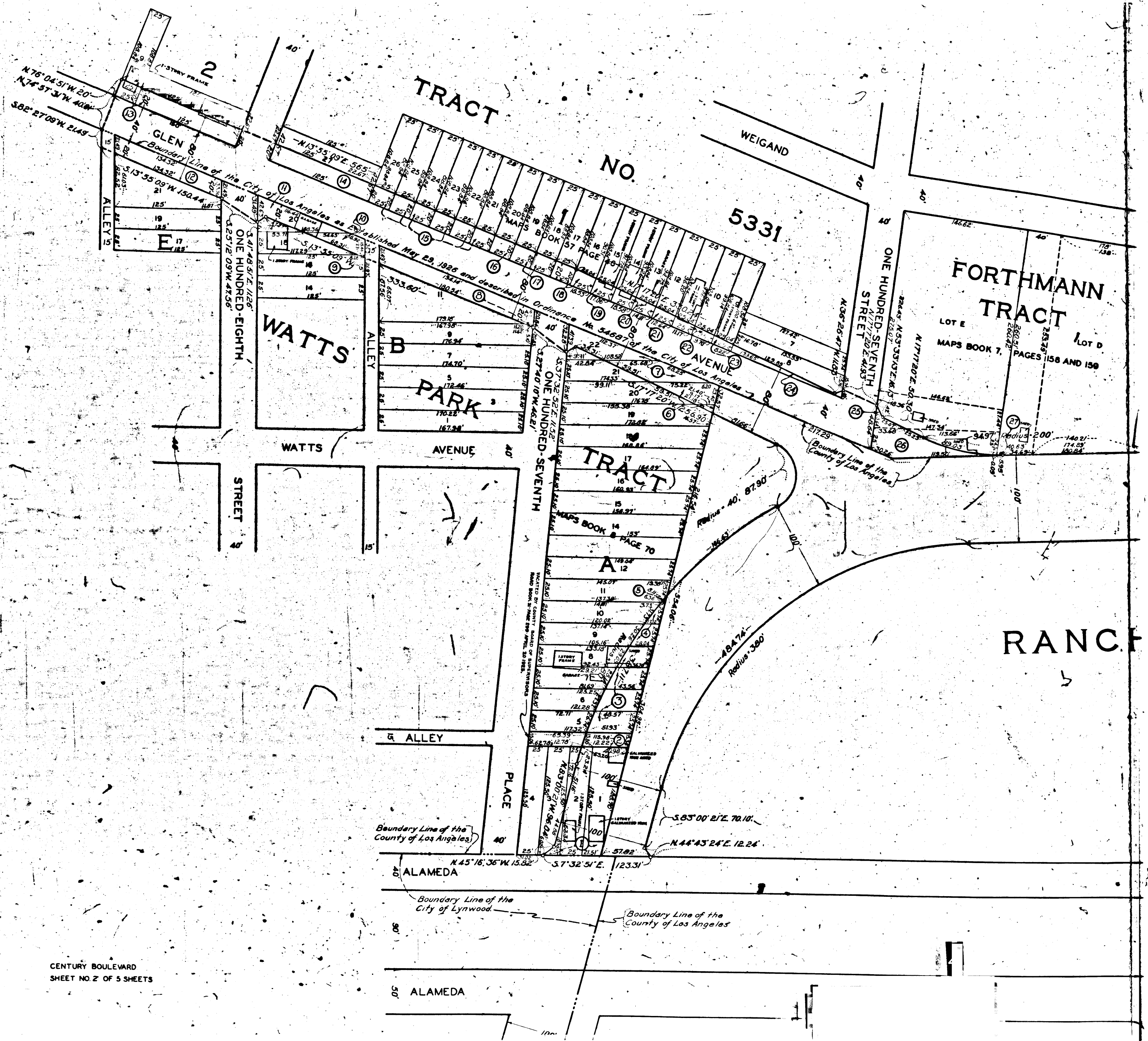
Boundary Line of the
County of Los Angeles

STREET

STREET

TST-JA

VF-101



CENTURY BOULEVARD SHEET NO. 2 OF 5 SHEETS