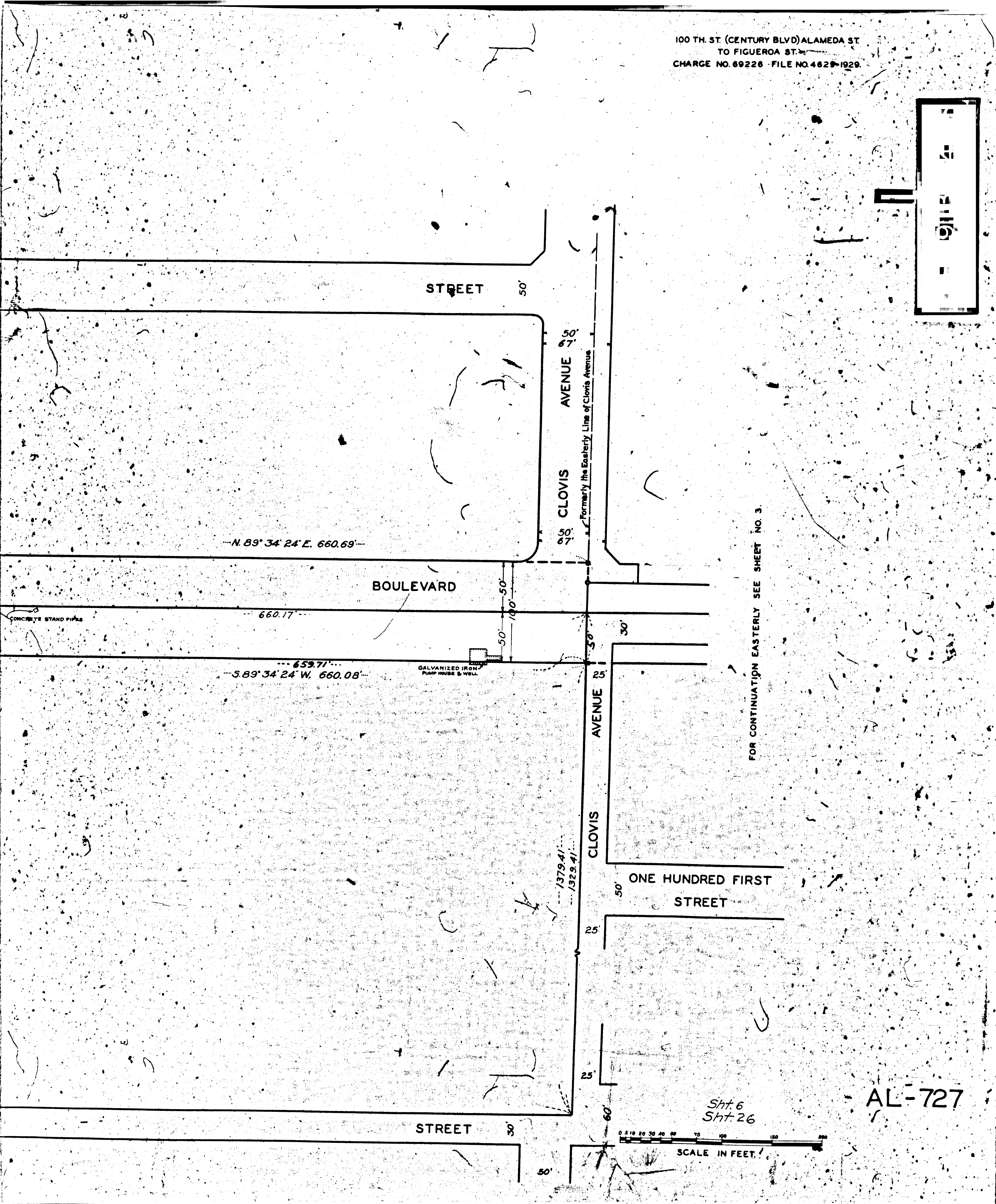
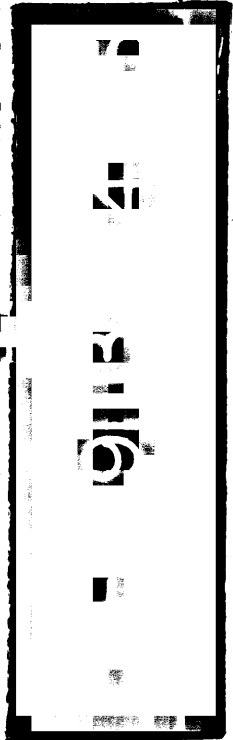


100 TH. ST. (CENTURY BLVD) ALAMEDA ST.  
TO FIGUEROA ST.  
CHARGE NO. 69226 - FILE NO. 4629-1929.



N. 89° 34' 24" E. 660.69'

S. 89° 34' 24" W. 660.08'

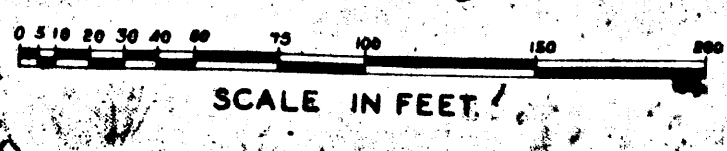
CLOVIS AVENUE  
Formerly the Easterly Line of Clovis Avenue

FOR CONTINUATION EASTERLY SEE SHEET NO. 3.

ONE HUNDRED FIRST STREET

Sht. 6  
Sht. 26

AL-727



SCALE IN FEET



Y-EIGHTH

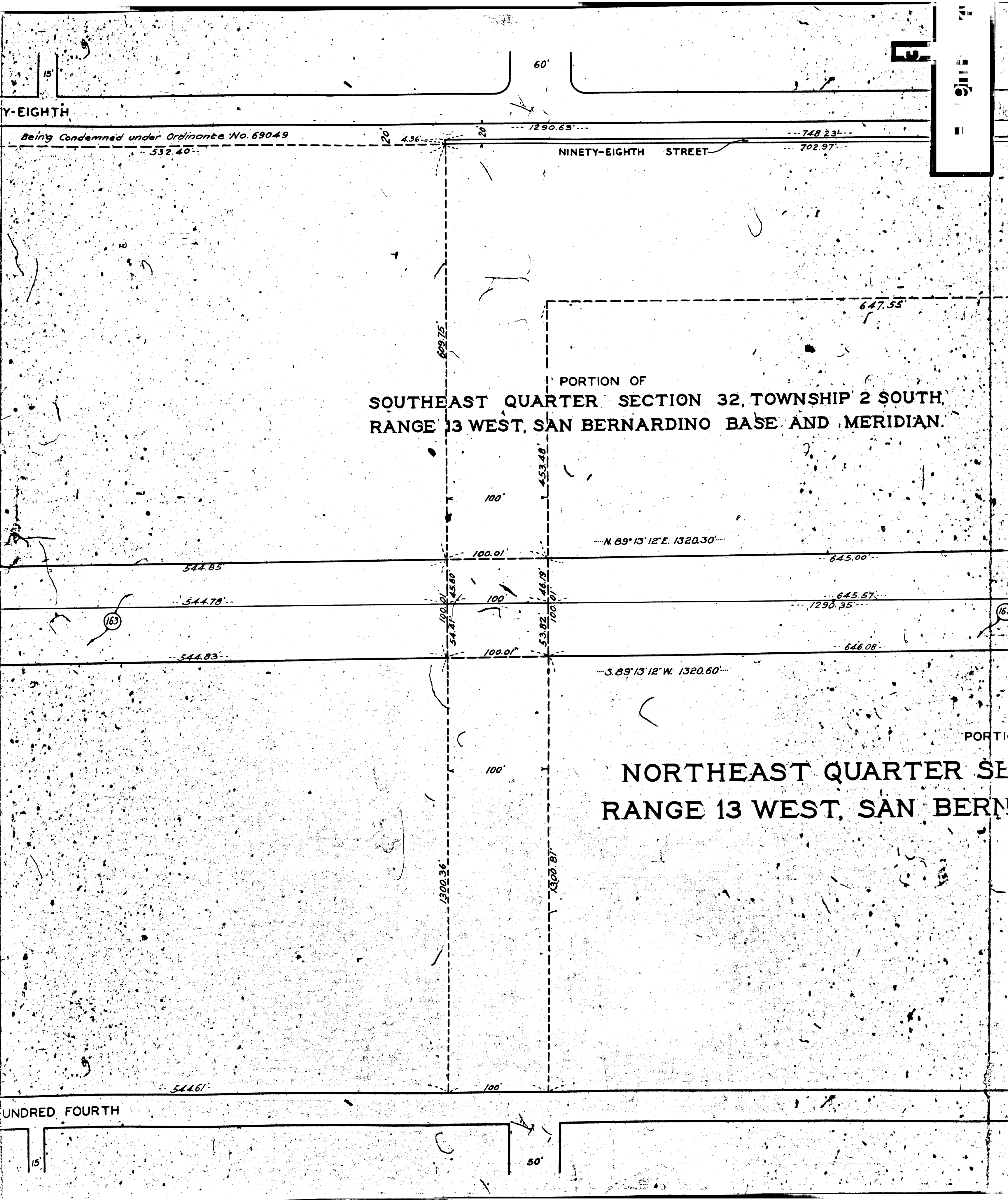
Being Condemned under Ordinance No. 69049

NINETY-EIGHTH STREET

PORTION OF  
SOUTHEAST QUARTER SECTION 32, TOWNSHIP 2 SOUTH,  
RANGE 13 WEST, SAN BERNARDINO BASE AND MERIDIAN.

PORTION OF  
NORTHEAST QUARTER SECTION 32, TOWNSHIP 2 SOUTH,  
RANGE 13 WEST, SAN BERNARDINO BASE AND MERIDIAN.

HUNDRED FOURTH





5 4 5

FOR CONTINUATION WESTERLY SEE SHEET NO. 5

