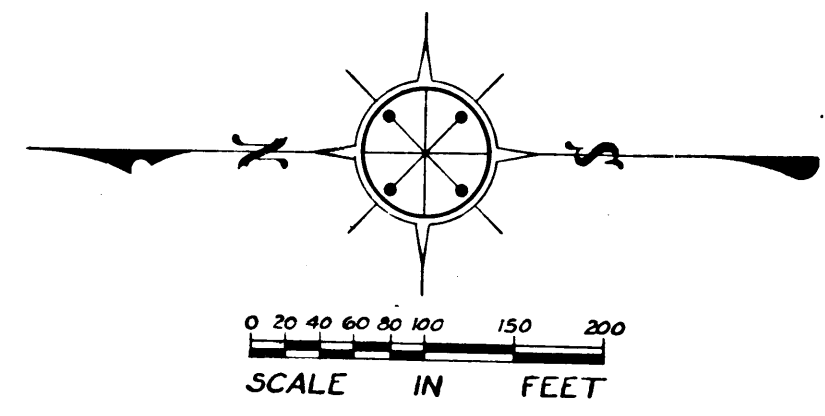
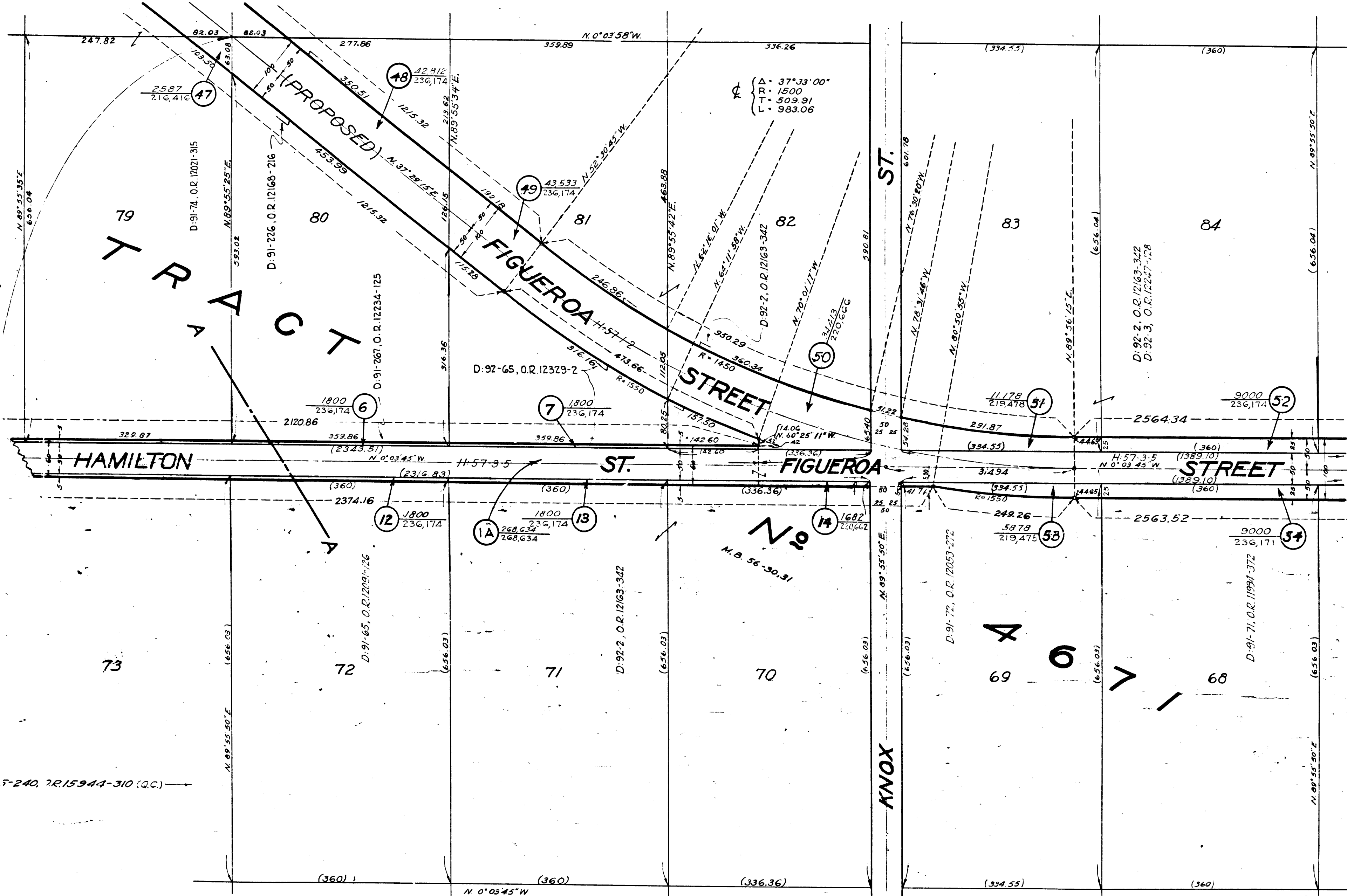


SEE SHEET No. 2

2

C.F. 1914 1-2



SEE SHEET No. 3

NOTE: PARCEL 34 HAS BEEN OMITTED

Sheet # of 3 Sheets
A. & I. DISTRICT
Drawn by F.W. Bewley
Traced by F.W. Bewley
Checked by Hagar, B... J...

C.F. 1914 1-2

3

SHEET 1 OF 8 SHEETS  
 CONDENSATION MAP  
 FIGUEROA ST.  
 A. & I. DISTRICT NO. 508

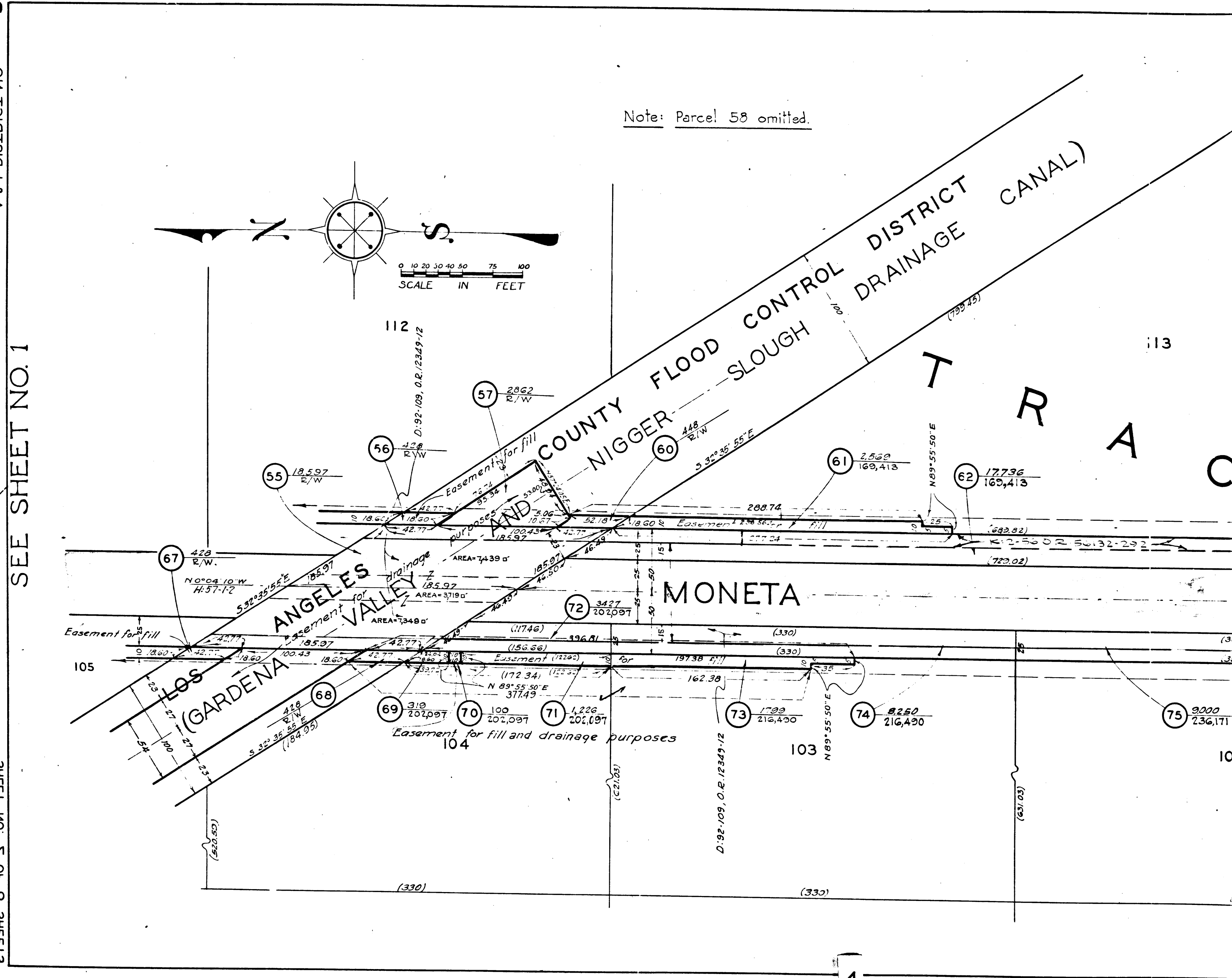
SHEET 1 OF 8 SHEETS  
 CONDENSATION MAP  
 FIGUEROA ST.  
 A. & I. DISTRICT NO. 508

Sheet No. of 8 Sheets	508
A. & I. DISTRICT NO.	508
Drawn by	W. Bewley
Checked by	W. Bewley
Approved by	H. Ger. B. B. B.
Date	1928
Date	1928
Date	1928

SHEET NO. 5 OF 8 SHEETS  
 CONDENSATION MAP  
 FIGUEROA ST.  
 A. & I. DISTRICT NO. 508

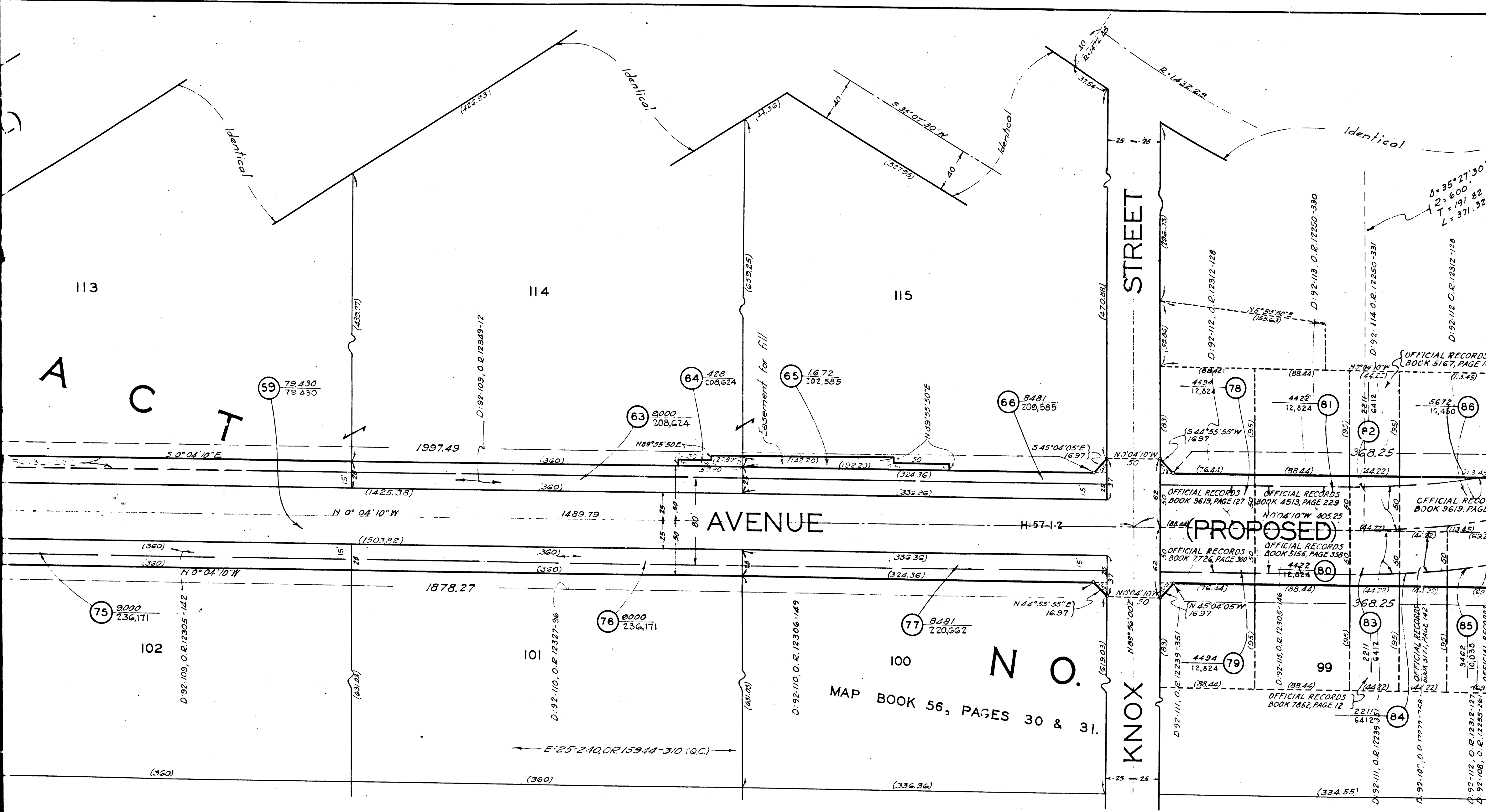
SHEET NO. 5 OF 8 SHEETS  
 CONDENSATION MAP  
 FIGUEROA ST.  
 A. & I. DISTRICT NO. 508

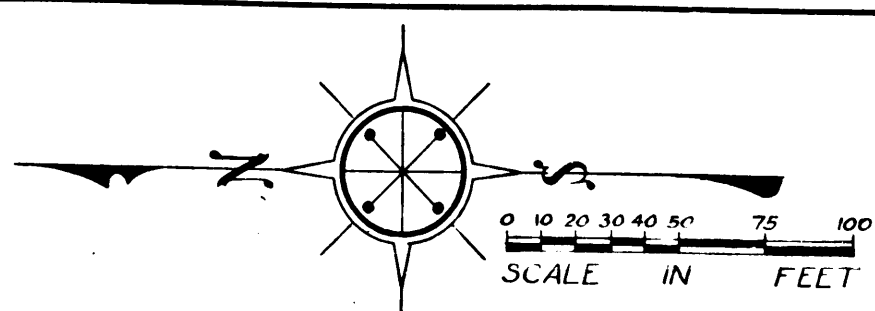
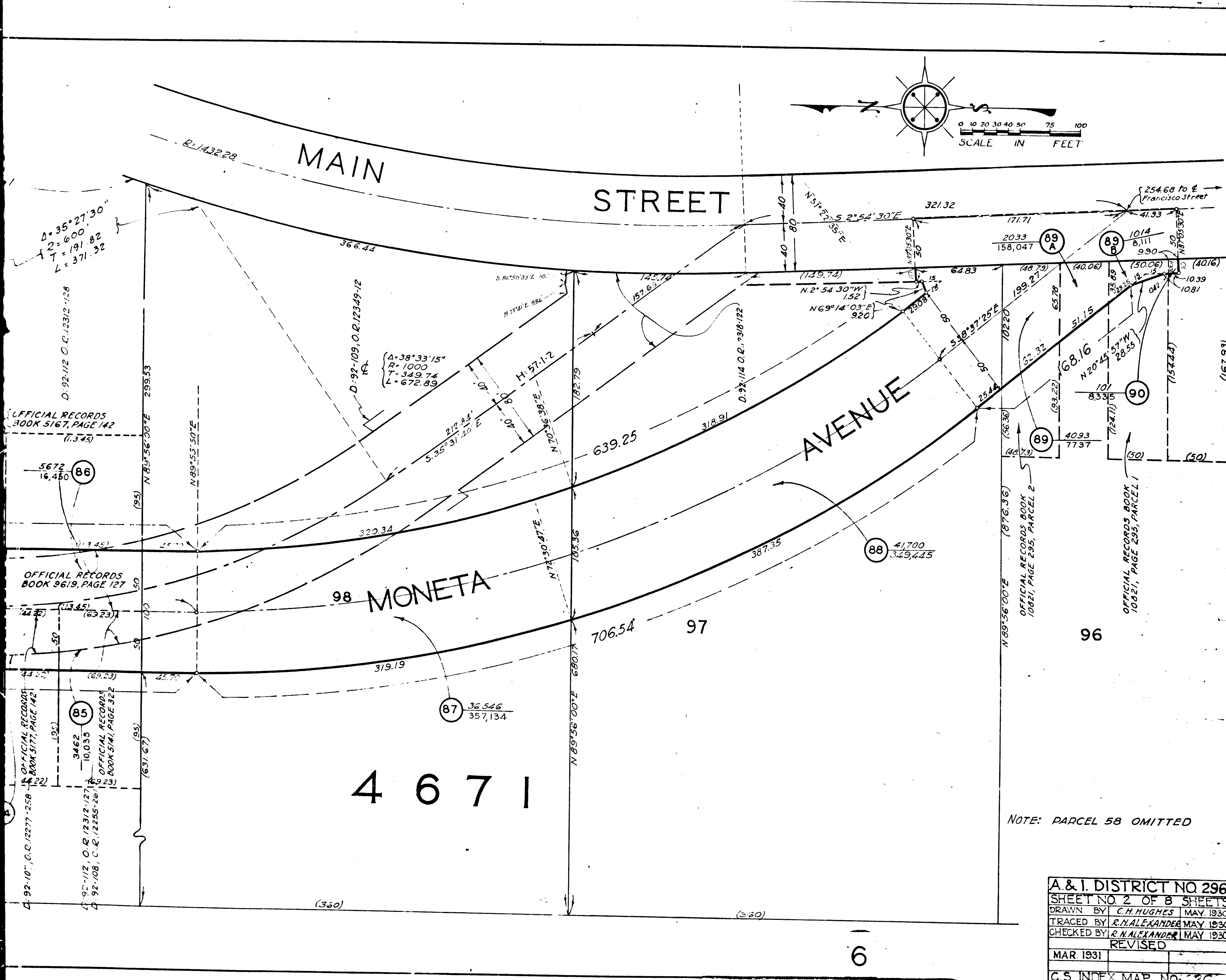
SEE SHEET NO. 1



Note: Parcel 58 omitted.

4  
 C.F. 1914 1-2





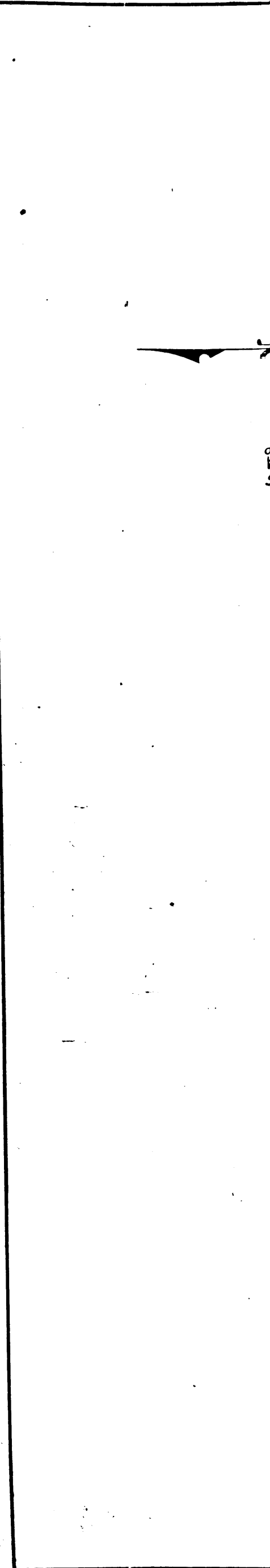
SHEET NO. 2 OF 8 SHEETS  
 CONDÉMNATION MAP  
 FIGUEROA ST.  
 A. & I. DISTRICT NO. 296

NOTE: PARCEL 58 OMITTED

A. & I. DISTRICT NO. 296	
SHEET NO. 2 OF 8 SHEETS	
DRAWN BY	C. H. HUGHES MAY 1930
TRACED BY	R. N. ALEXANDER MAY 1930
CHECKED BY	R. N. ALEXANDER MAY 1930
REVISED	
MAR 1931	
C.S. INDEX MAP NO. 26	

C.F. 1914 1-2

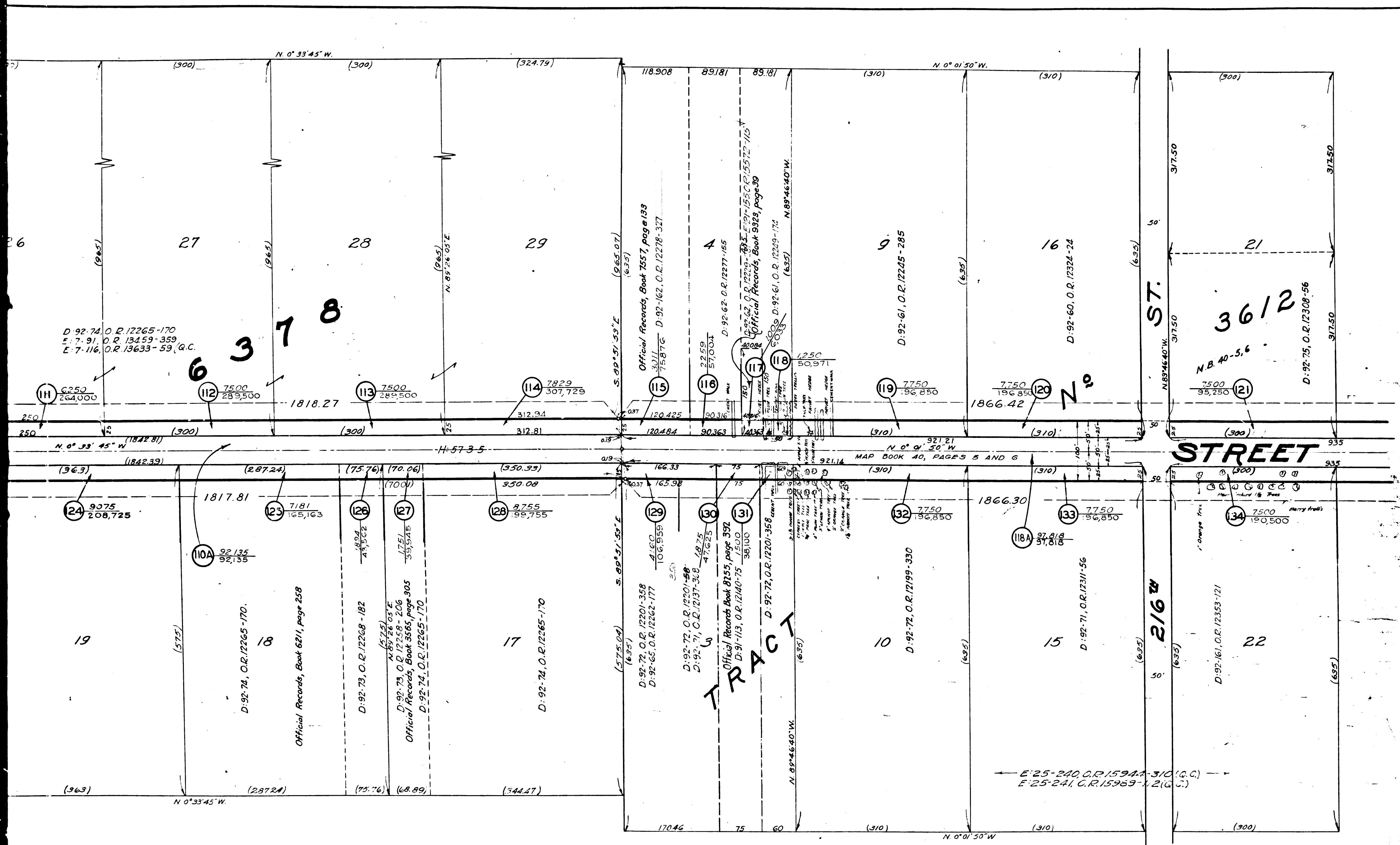
SHEET NO. 3 OF 8 SHEETS  
 CONDÉMNATION MAP  
 FIGUEROA ST.  
 A. & I. DISTRICT NO. 296











Sheet 3 of 8 Sheet  
**A. & I. DISTRICT No 296**  
 Drawn by F. W. Bewley Oct. 1928  
 Traced by F. W. Bewley Oct. 1928  
 Checked by HAGER-LOCKIE Dec. 1928

C.F. 1914 1-2

ST. SHEET No. 4

SHEET 3 OF 8 SHEETS  
 Commission  
 DISTRICT No. 296  
 A. & I. DISTRICT No. 296  
 SHEET 3 OF 8 SHEETS  
 Commission  
 DISTRICT No. 296

SHEET 3 OF 8 SHEETS  
 Consolidation Map  
 District No. 21  
 588

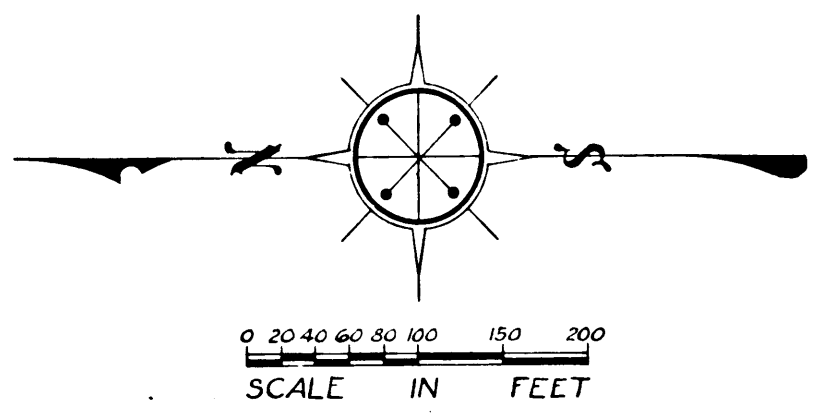
SHEET 4 OF 8 SHEETS  
 Consolidation Map  
 District No. 21  
 588

SHEET 4 OF 8 SHEETS  
 Consolidation Map  
 District No. 21  
 588

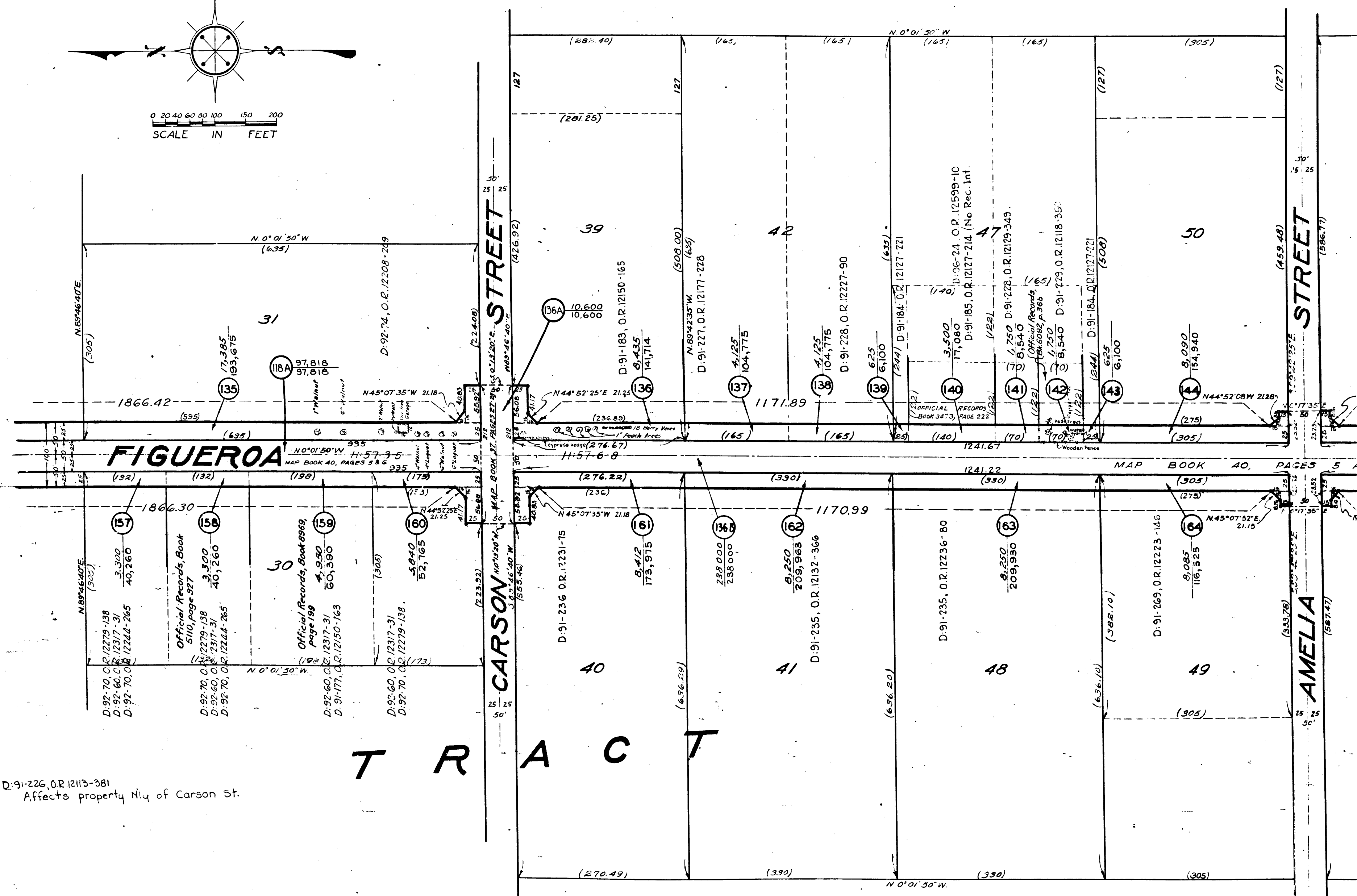
SHEET 4 OF 8 SHEETS  
 Consolidation Map  
 District No. 21  
 588

No 296  
 Oct 1928  
 Oct 1928  
 Dec 1928

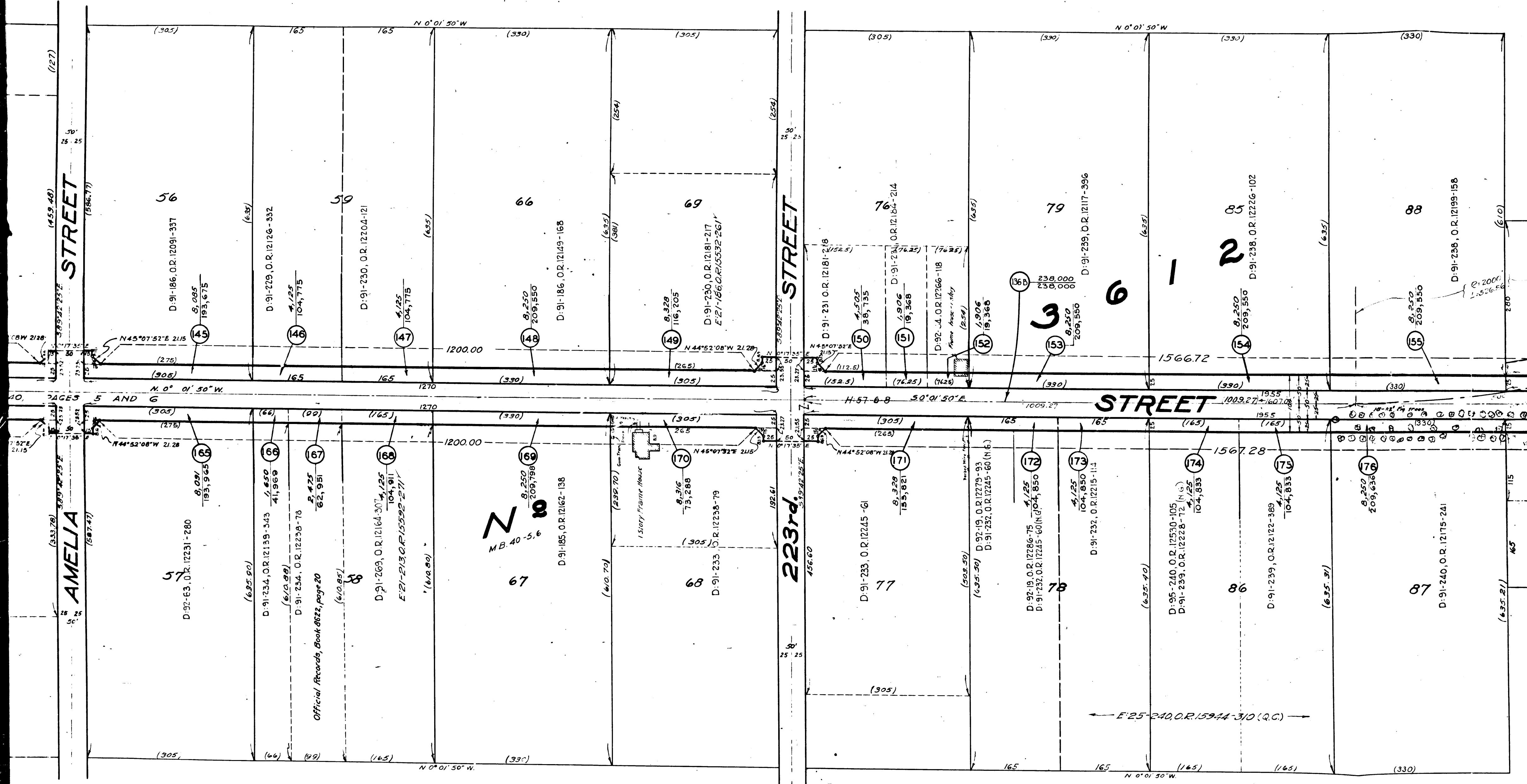
D:91-226, O.R. 12113-381  
 Affects property Nly of Carson St.



SEE SHEET No. 3



10  
 C.F. 1914 1-2



STREET

AMELIA

STREET

223rd

STREET

C.F. 1914 1-2

