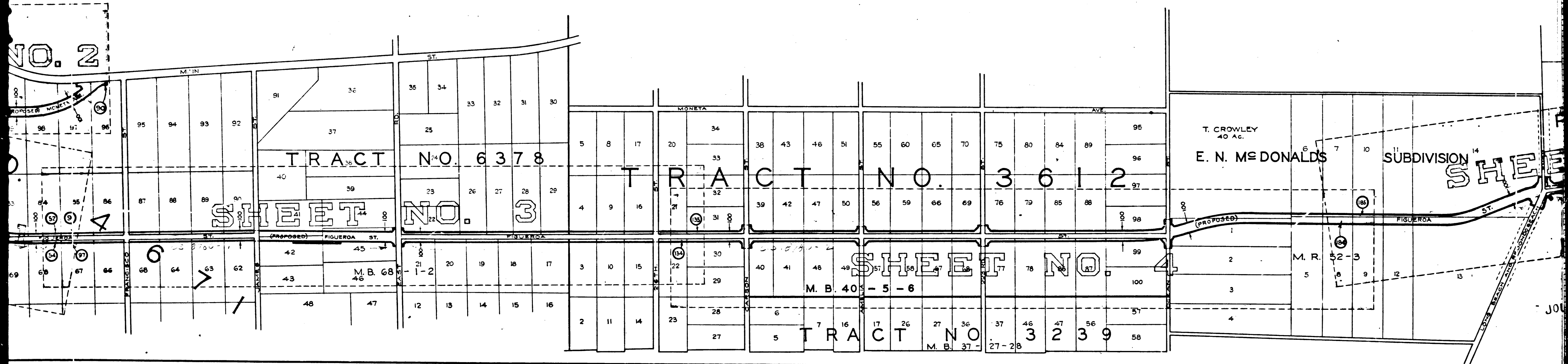


A & I DISTRICT N° 236		
INDEX TO CONDEMNATION MAP		
DRAWN BY	W. W. CUNNINGHAM	JULY 1930
TRACED BY	W. W. CUNNINGHAM	JULY 1930
CHECKED BY	C. H. HUGHES	JULY 1930
REVISED		
C. S. INDEX MAP NOS. 26 & 28		

1

C.F. 1914 2-2



2

C.F. 1914 2-2

EXHIBIT "A"
**ACQUISITION AND IMPROVEMENT DISTRICT NO. 296
 OF THE COUNTY OF LOS ANGELES**

FOR
**THE ACQUIRING, OPENING, WIDENING, AND EXTENDING OF
 FIGUEROA STREET, ET AL.**

MAP SHOWING PROPERTY TO BE ACQUIRED, IN ACCORDANCE WITH THE PROVISIONS OF THE ACQUISITION AND IMPROVEMENT ACT OF 1925, APPROVED MAY 23, 1925, COMMONLY KNOWN AS THE "MATTOON ACT." SCALES AS SHOWN. SEPTEMBER, 1931

J. E. ROCKHOLD — COUNTY SURVEYOR

SUBMITTED:

Alfred Jones
 ALFRED JONES,
 CHIEF DEPUTY

APPROVED:

J. E. Rockhold
 J. E. ROCKHOLD,
 COUNTY SURVEYOR

APPROVED AS TO FORM:

EVERETT W. MATTOON, COUNTY COUNSEL

E. W. Mattoon
 DEPUTY COUNTY COUNSEL

LEGEND

PORTIONS COLORED RED OR GREEN SHOW LOCATION, GENERAL ROUTE, AND TERMINI OF LAND IN WHICH AN UNQUALIFIED EASEMENT FOR PUBLIC HIGHWAY PURPOSES IS SOUGHT TO BE ACQUIRED.

PORTIONS COLORED RED SHOW LAND IN WHICH THE PUBLIC HAS NO EASEMENT FOR HIGHWAY PURPOSES.

PORTIONS COLORED GREEN SHOW LAND USED BY THE PUBLIC FOR HIGHWAY PURPOSES.

PORTIONS COLORED YELLOW SHOW LOCATION OF LAND IN WHICH AN EASEMENT FOR INCIDENTAL PUBLIC HIGHWAY PURPOSES IS SOUGHT TO BE ACQUIRED.

NUMBERS IN CIRCLES INDICATE PARCELS SOUGHT TO BE CONDEMNED.

THE PARCELS ARE DESCRIBED IN PARAGRAPH VII OF THE COMPLAINT.

FIGURES SHOWN IN PARENTHESES () ARE EITHER RECORD DISTANCES OR ARE CALCULATED FROM RECORD DISTANCES.

FIGURES SHOWN THUS:

$\frac{0,000}{00,000}$ INDICATE AREA TO BE ACQUIRED, IN SQUARE FEET.
 INDICATE AREA OF HOLDING, INCLUDING AREA TO BE ACQUIRED, IN SQUARE FEET.

SHEET 8 OF 8 SHEETS

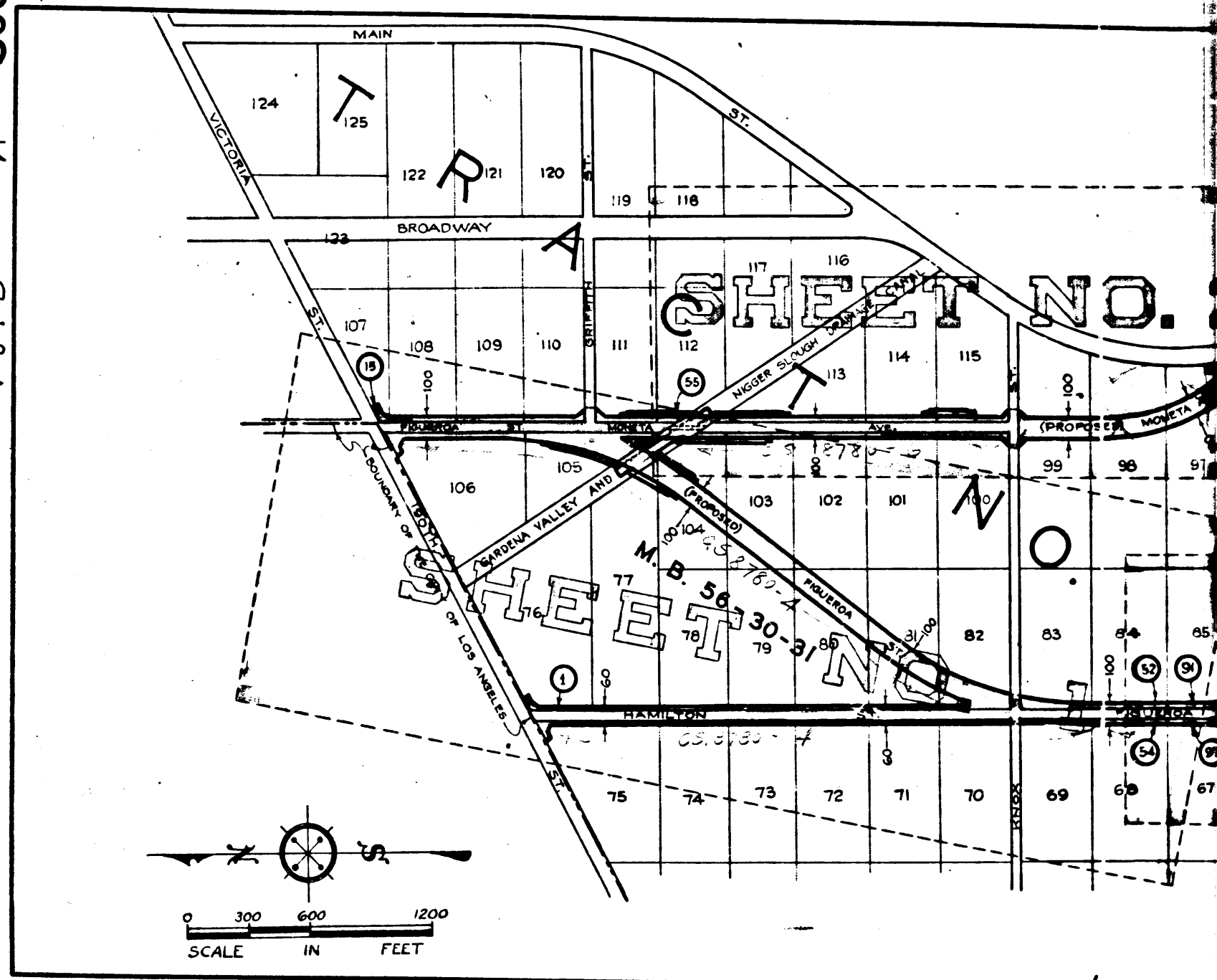
A & I. DISTRICT NO. 296	
Drawn by	H. H. Woodley Apr. 1930
Traced by	Frederick Gebhart Apr. 1930
Checked by	H. H. Woodley May, 1930

Negative of this map filed in Blue Print Dept. as Negative No. 214 (8 Shs. + Index)

A & I DISTRICT NO. 296
 FIGUEROA STREET
 CONDEMNATION MAP
 SHEET 8 OF 8 SHEETS

FIGUEROA STREET ET AL.
 A & I DISTRICT NO. 296

A & I DISTRICT NO. 296
 FIGUEROA STREET
 CONDEMNATION MAP
 SHEET 1 OF 1 SHEET



3

C.F. 1914 212

W I L M I N G T O N

BLOCK A
RANGE 4

RIOR COURT CASE N° 6395
(C.F. 80)

STREET

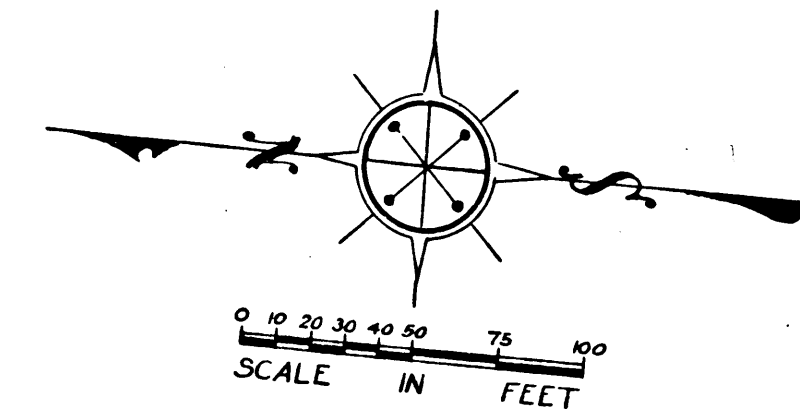
STREET

ALLEY

BLOCK A
SUPERIOR COURT CASE N° 6395
RANGE 3
(C.F. 80)

LEO'S TRACT
12 PAGE 84

FRIGATE AVENUE



ACQUIS
THE ACC

MAP BOOK 44, PAGES 91 to 94

C.S. 8780-5 & C.S. 8-266
C.S. 8-1273

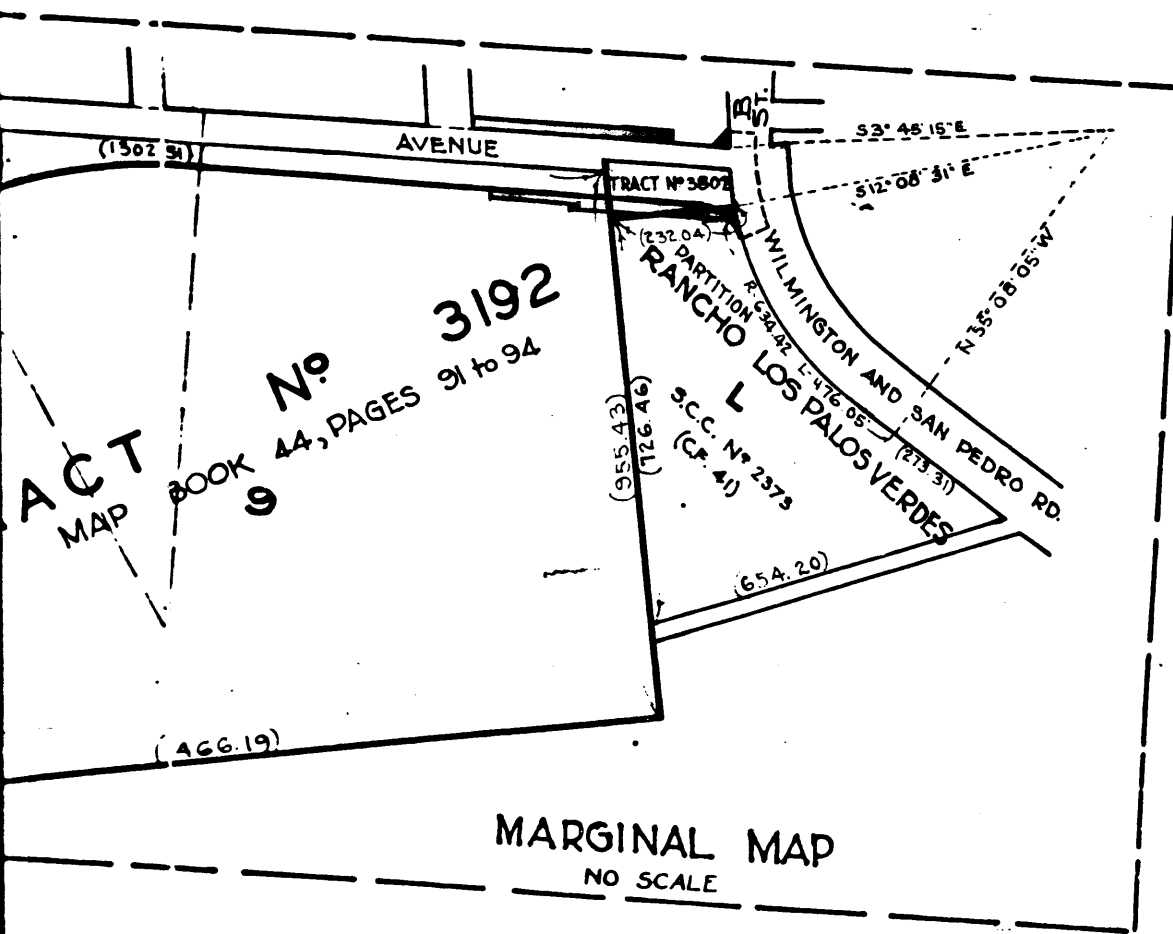
AVENUE 370

SUPERIOR COURT CASE NO. 6395

SUPERIOR COURT CASE NO. 96793
(C.F. 712)

3192

Sht. 28
Superior Court Case No. 331053
Suit for Condemnation
Filed Nov. 18th 1931
County of Los Angeles, Pltff.
Vs
Samuel Aidlin et al., Def.
Proceedings abandoned Aug. 21, 1933



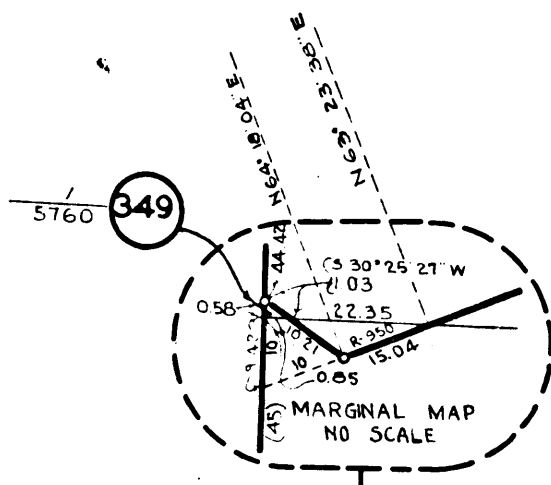
PARTITION OF THE
RANCHO LOS PALOS VERDES
SUPERIOR COURT CASE N° 2373
(C.F. 4)

WILMINGTON AND SAN PEDRO ROAD

4

C.F. 1914 2-2

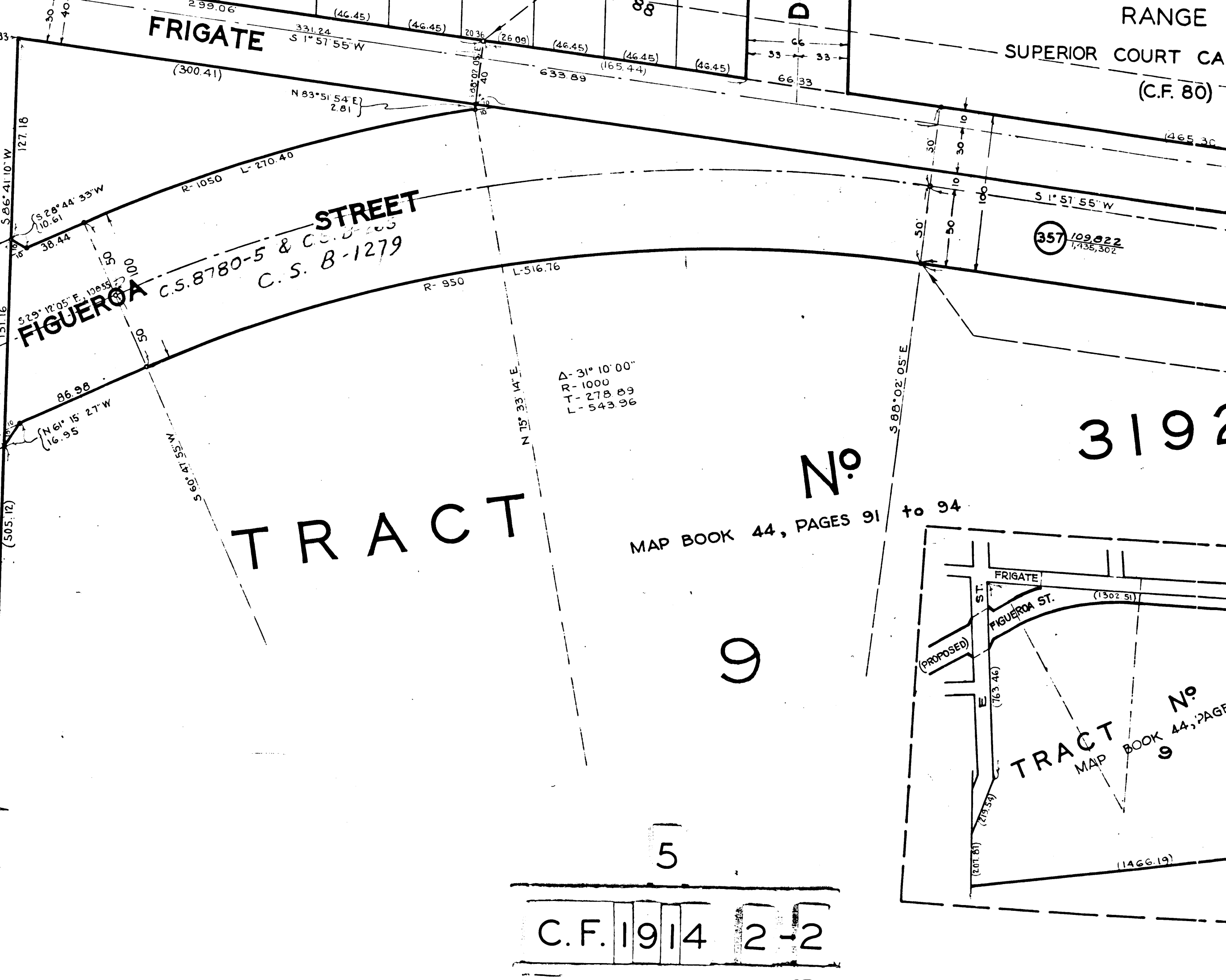
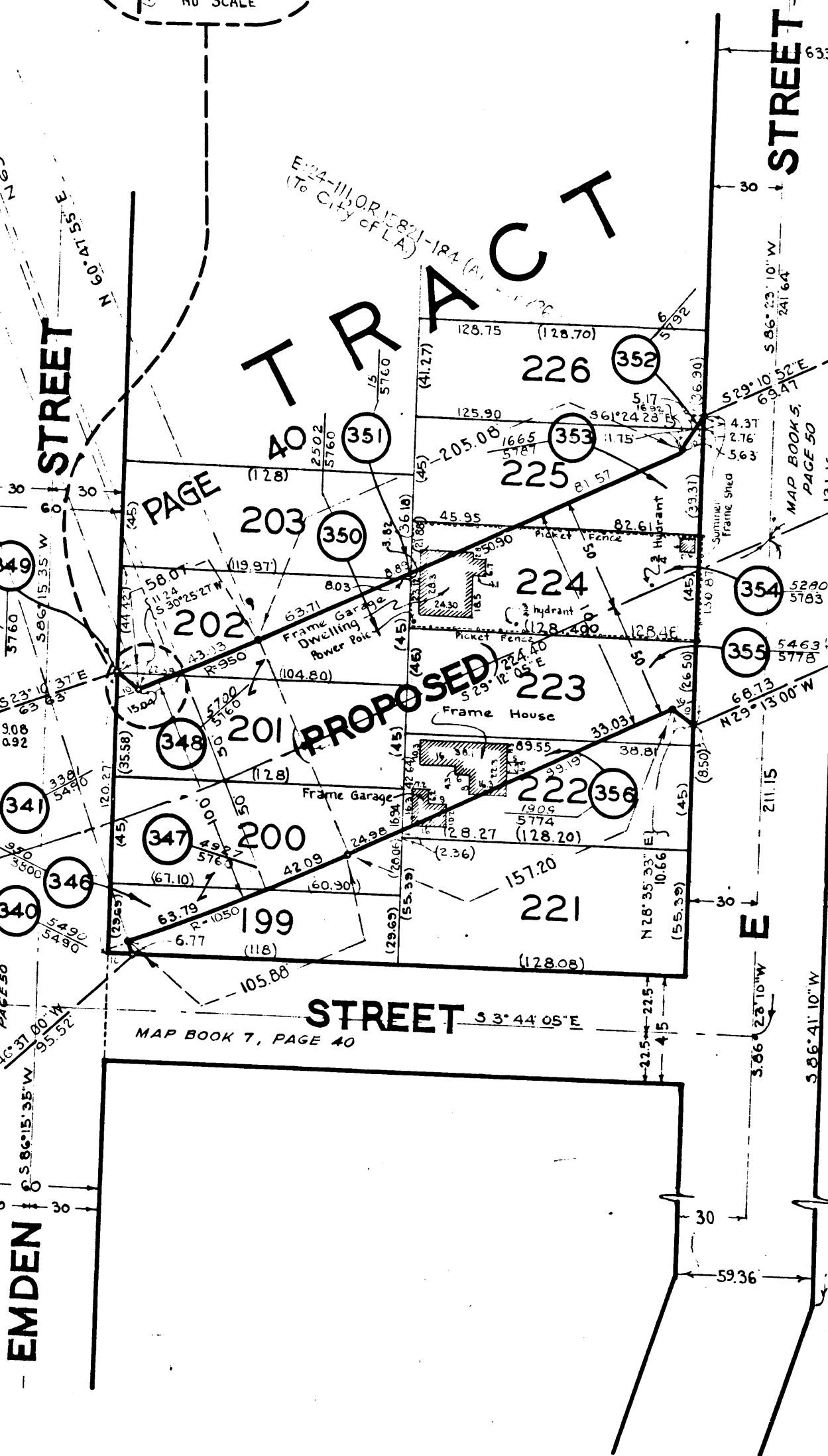
MA
PR
AP
SC
SU
AL
CHI
POR
ROL
FOR
FOR
PUB
POR
BY
POR
IN V
HIG
NUM
THE
FIGU
DIST
FIGU



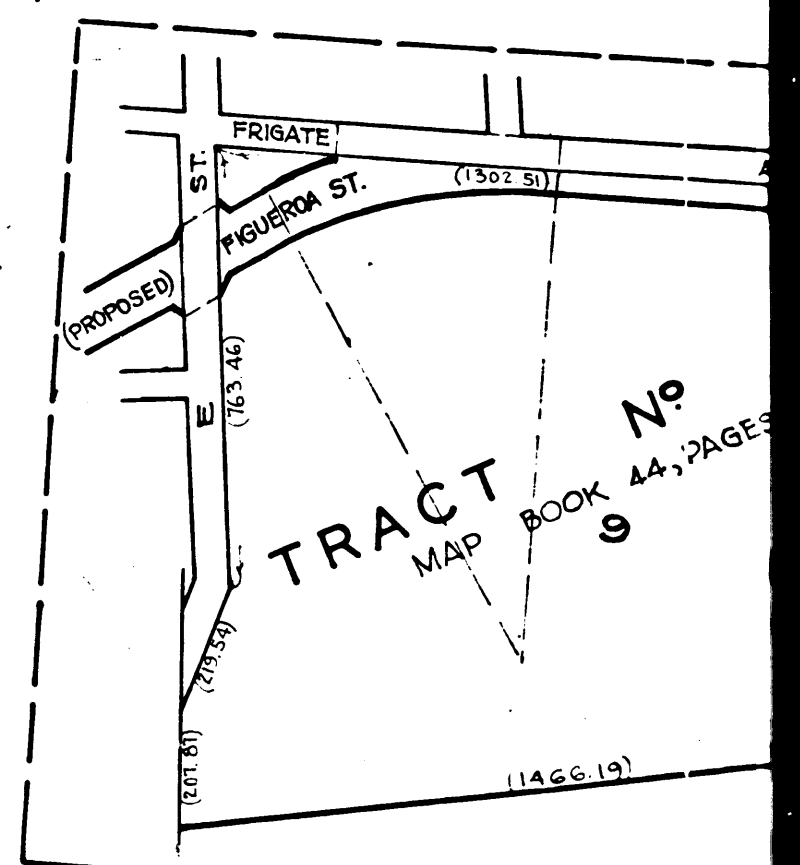
A PORTION OF BLOCK A OF RANGE 5
WILMINGTON 5 6 7 8 9 10
MAP BOOK 5, PAGE 88
STREET D
W
BLOCK
RANGE
SUPERIOR COURT CAS
(C.F. 80)

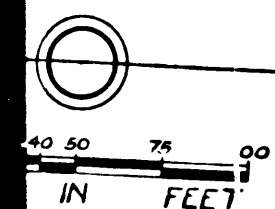
A- 25° 28' 00"
R- 1000
T- 125.97
L- 444.47

ST A
MAP BOOK 7, PAGE 43
MAP BOOK 7, PAGE 40
ALLEY
EMDEN
157
156
155
153
152
179
178
177
175
174



C.F. 1914 2-2

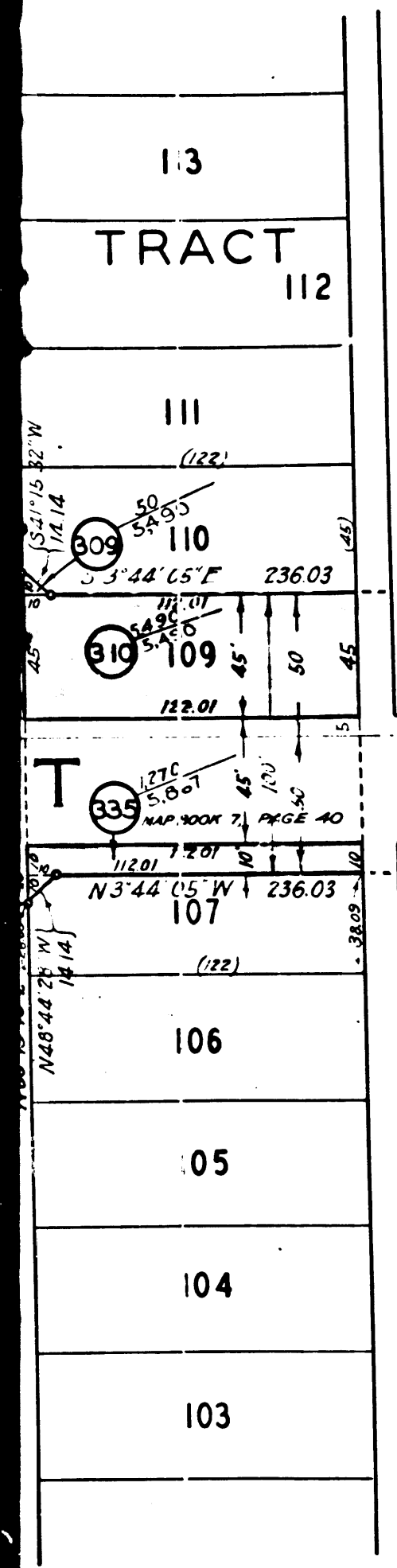




SHEET 7 OF 8 SHEETS

A. & I. DISTRICT NO. 296

Drawn by	L. D. Gifford	Sep. 1928
Traced by		Dec. 1928
Checked by	Dodds	June 1934



SHEET 7 OF 8 SHEETS
CONDENMATION MAP
A. & I. DISTRICT NO. 296

SEE SHEET 8

SHEET 1 OF 8 SHEETS
CONDENMATION MAP

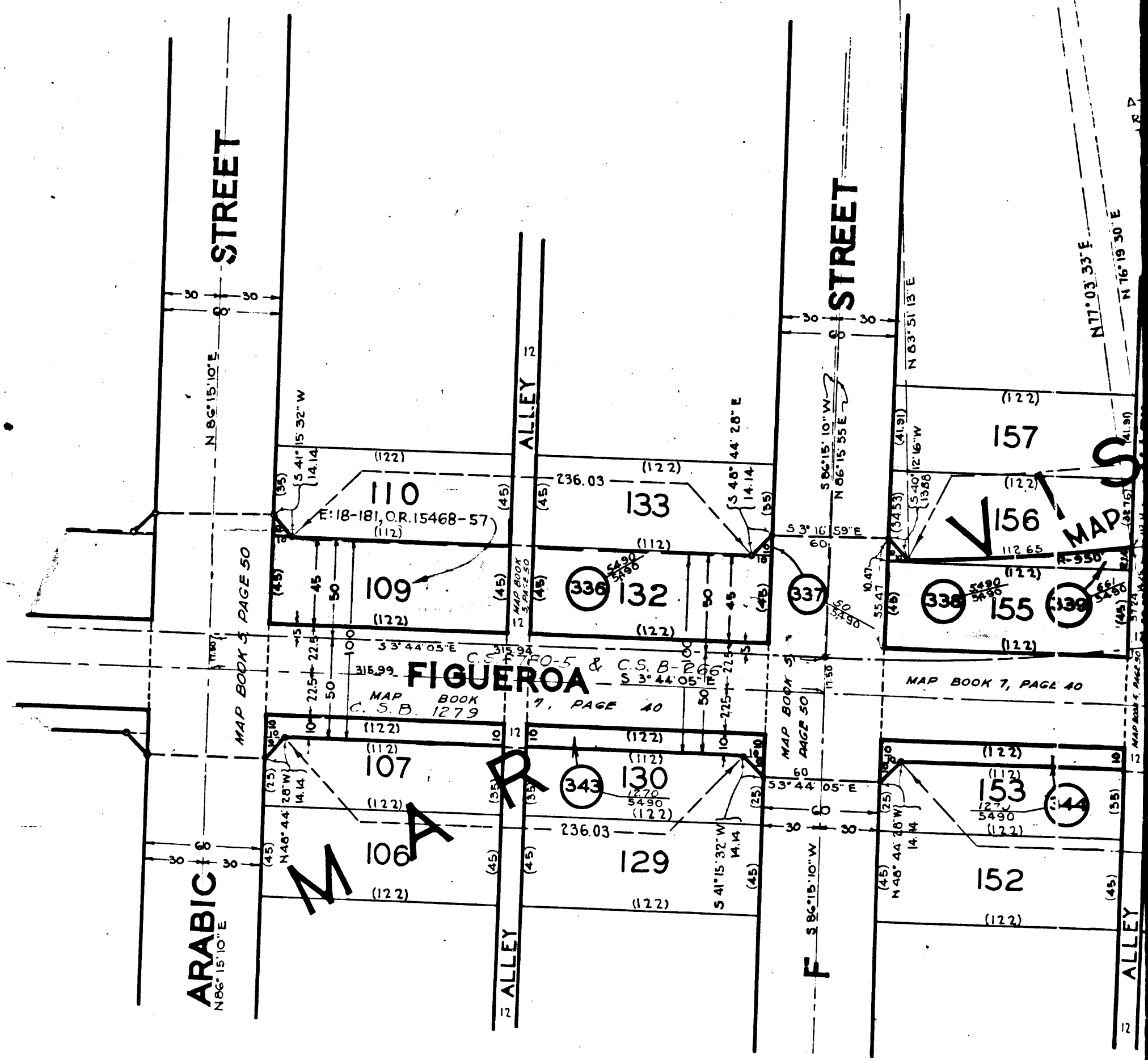
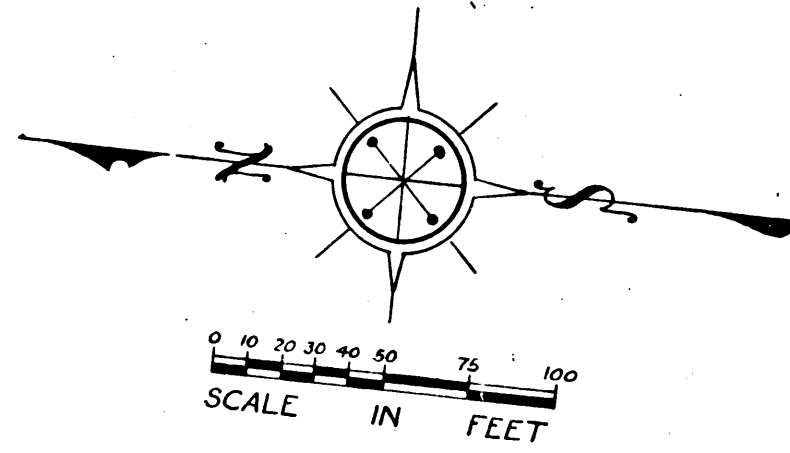
UNDER DISTRICT NO. 500

SHEET 8 OF 8 SHEETS
CONDENMATION MAP
FIGUEROA STREETS
A. & I. DISTRICT NO. 500

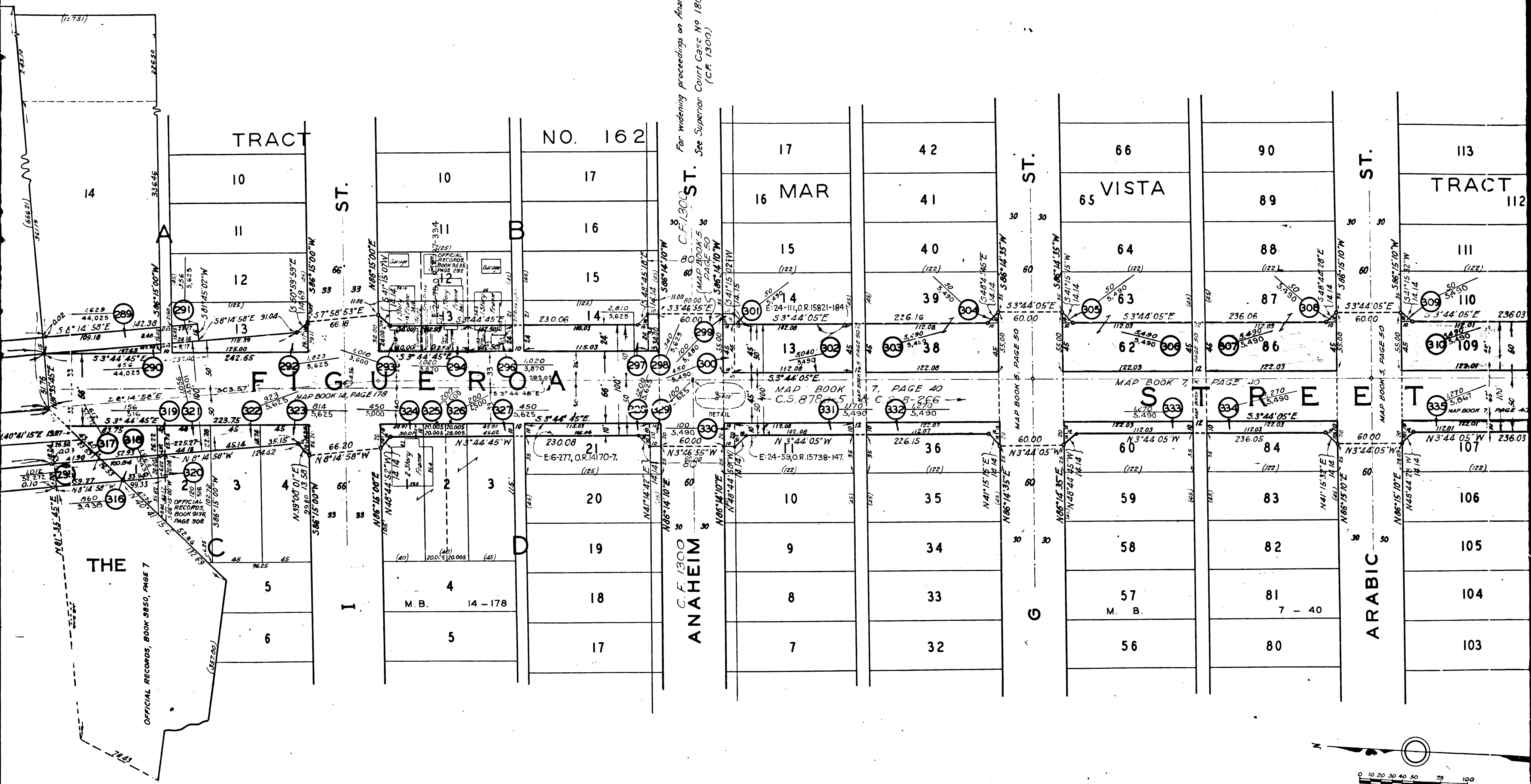
SHEET 8 OF 8 SHEETS
CONDENMATION MAP
FIGUEROA STREETS
A. & I. DISTRICT NO. 500

SEE SHEET NO. 7

SEE SHEET NO. 7



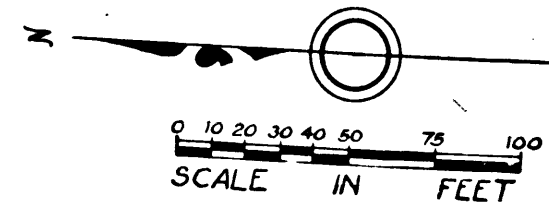
6
C.F. 1914 2-2



For widening proceedings on Anaheim St. See Superior Court Case No 180661 (C.F. 1300)

C.F. 1300 ST.

C.F. 1300 ANAHEIM

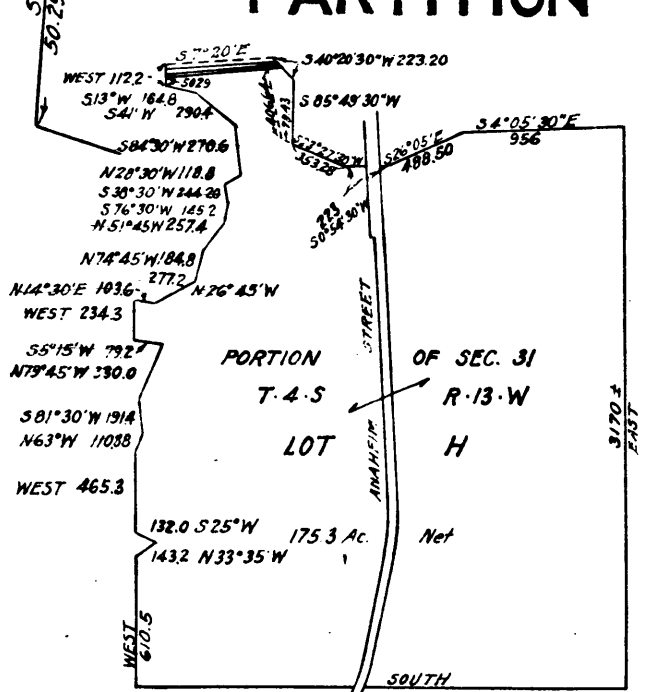
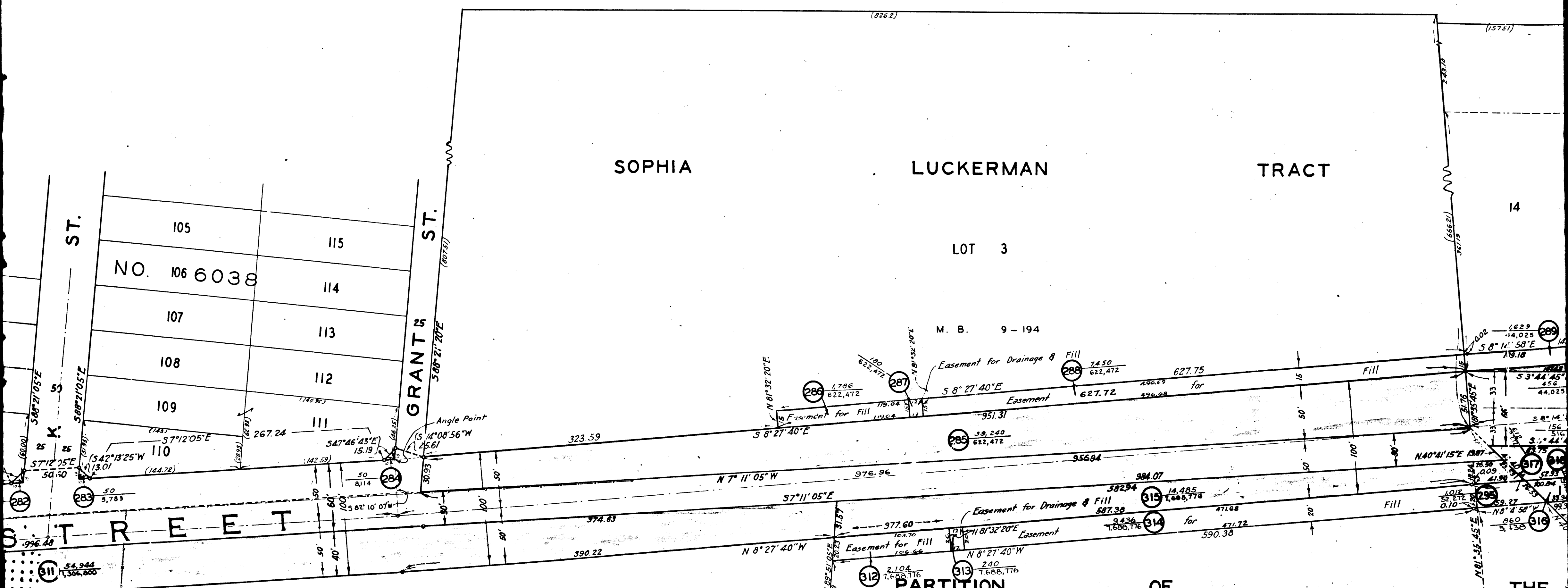


7
C.F. 1914 12 2

SOPHIA LUCKERMAN TRACT

LOT 3

M. B. 9 - 194



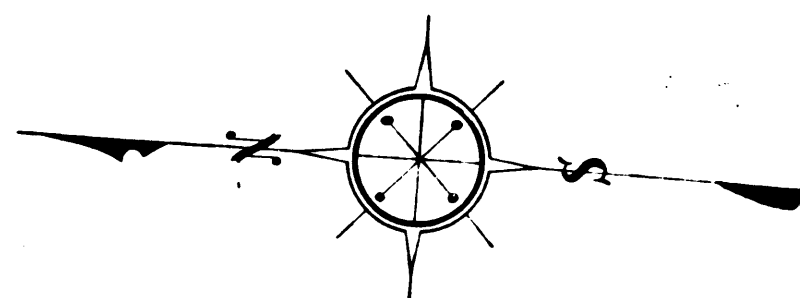
OF
SUPERIOR COURT CASE NO. 2373 (C.F. 41)
RANCHO LOS PALOS VERDES

8
C.F. 1914 2-2

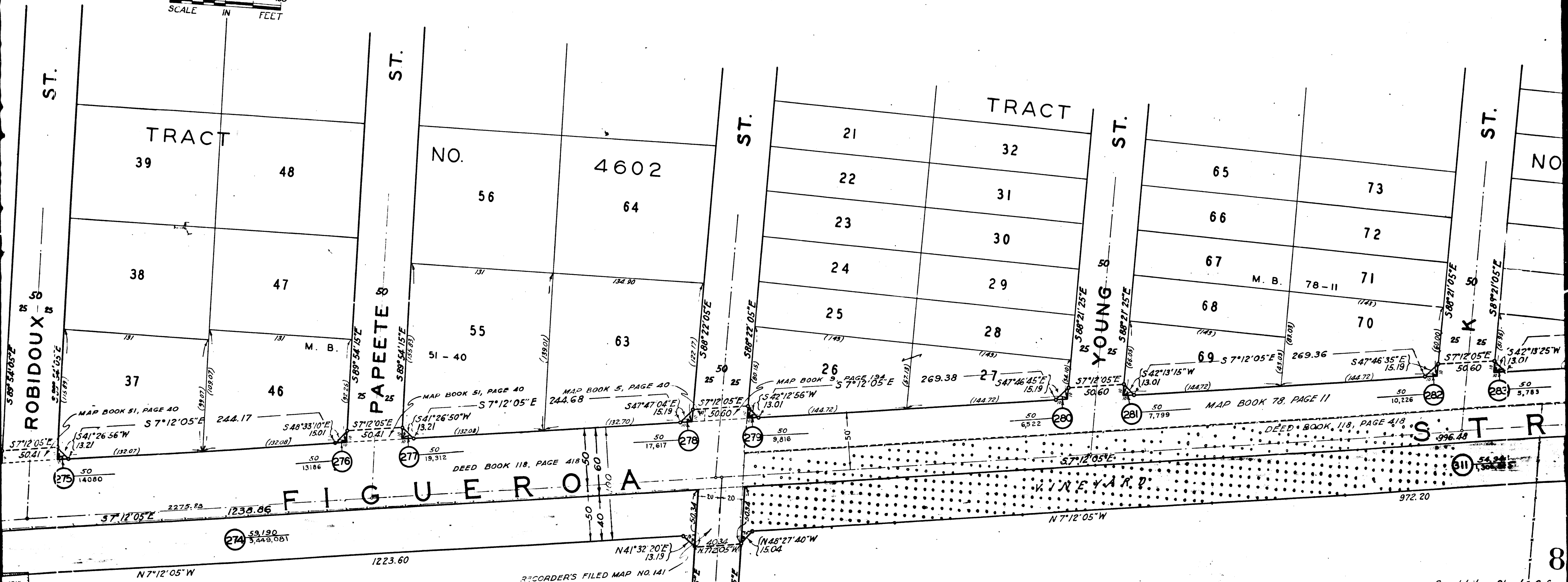
8
See detail on Sheet 6 for remainder of this parcel.

THE RANCHO LOS PALOS VERDES)

Compiled from County Assessor's records, R.F. 141 and Tract No. 162 M.B. 4-178



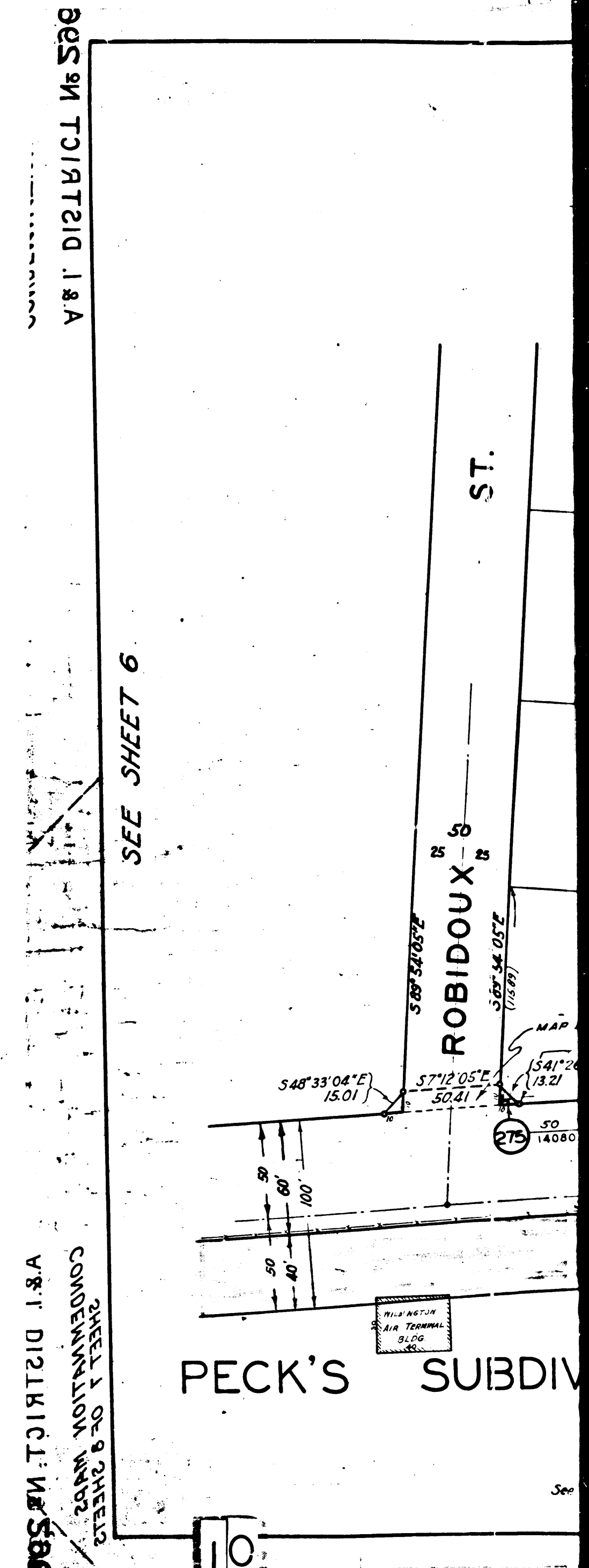
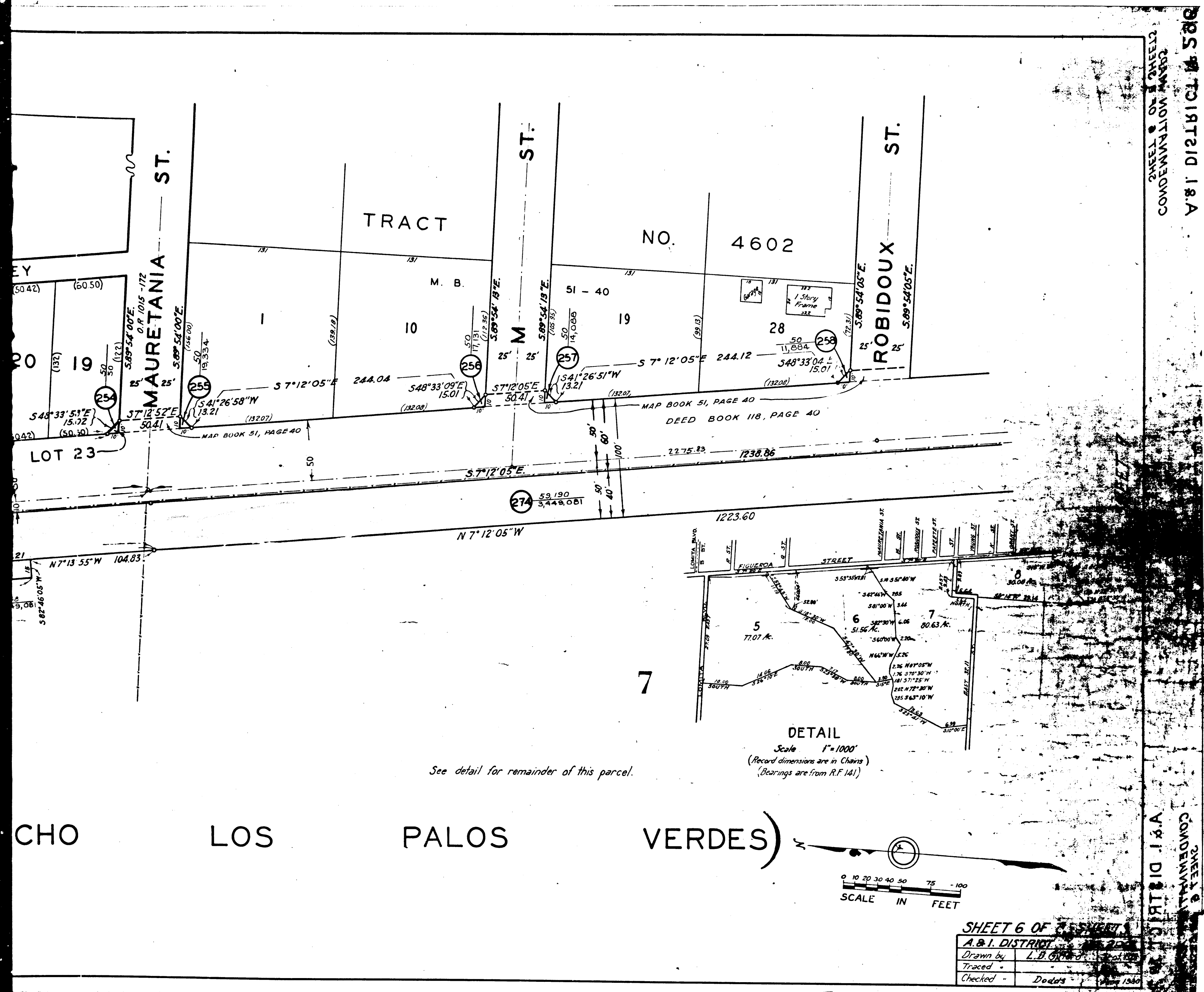
SCALE IN FEET
0 10 20 30 40 50 75 100



SUBDIVISION (OF LOT J AND PORTION OF LOT H OF THE PARTITION OF THE RA
7 RECORDER'S FILED MAP NO. 141

See detail on Sheet 6 for remainder of this parcel.

9
C.F. 1914 2 42



C.F. 1914 2-2

ANCHO

SAN

PEDRO

A. M. ROCHA

TRACT

NO.

5605

DISTRICT COURT CASE NO. 4666
EXHIBIT "A"
(C. F. 118)

MAP BOOK 170, PAGES 16 & 17
22

ALLEY

(50.42) (50.42) (60.50)

21 20 19

5.48° 33' 58" E
15.02

LOT 23

7,096.563

5.87° 46' 05" W

for Fill
Drainage & Fill

for Fill

46° 05' W

(Rec. 12.40 Ch.)

D. 118-418

5.7° 13' 55" E.

960.28

1481.94

5.7° 13' 55" E.
1258.83

5.7° 13' 55" E

1513.01

1513.30

51,017
1,617,363

266

N 7° 13' 55" W

1281.10

1513.31

1070.34

See detail for remainder of this parcel

S T R E E T

Easement for Drainage & Fill
5.82° 46' 05" W

Easement
N 7° 13' 55" W

Easement
N 7° 13' 55" W

Easement
N 7° 13' 55" W

Easement
N 7° 13' 55" W

Easement
N 7° 13' 55" W

Easement
N 7° 13' 55" W

Easement
N 7° 13' 55" W

Easement
N 7° 13' 55" W

Easement
N 7° 13' 55" W

Easement
N 7° 13' 55" W

Easement
N 7° 13' 55" W

Easement
N 7° 13' 55" W

Easement
N 7° 13' 55" W

Easement
N 7° 13' 55" W

Easement
N 7° 13' 55" W

6

LOT H OF THE PARTITION OF THE RANCHO

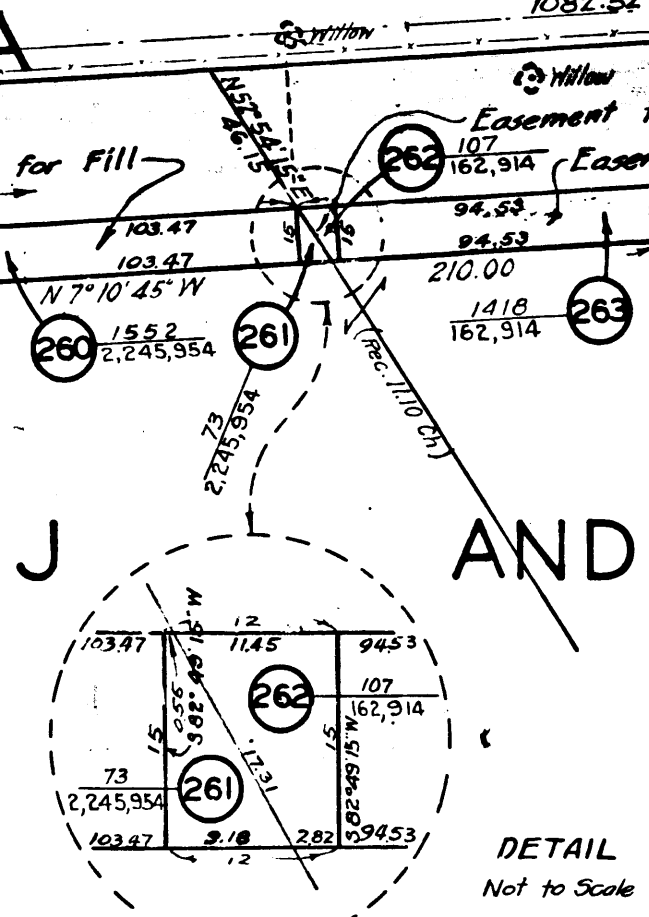
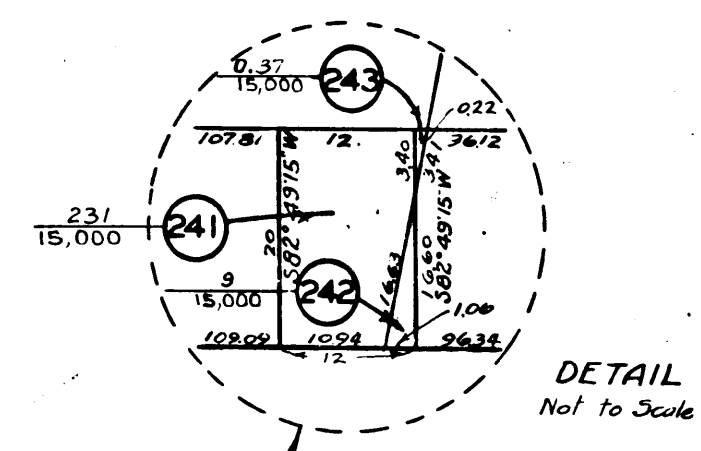
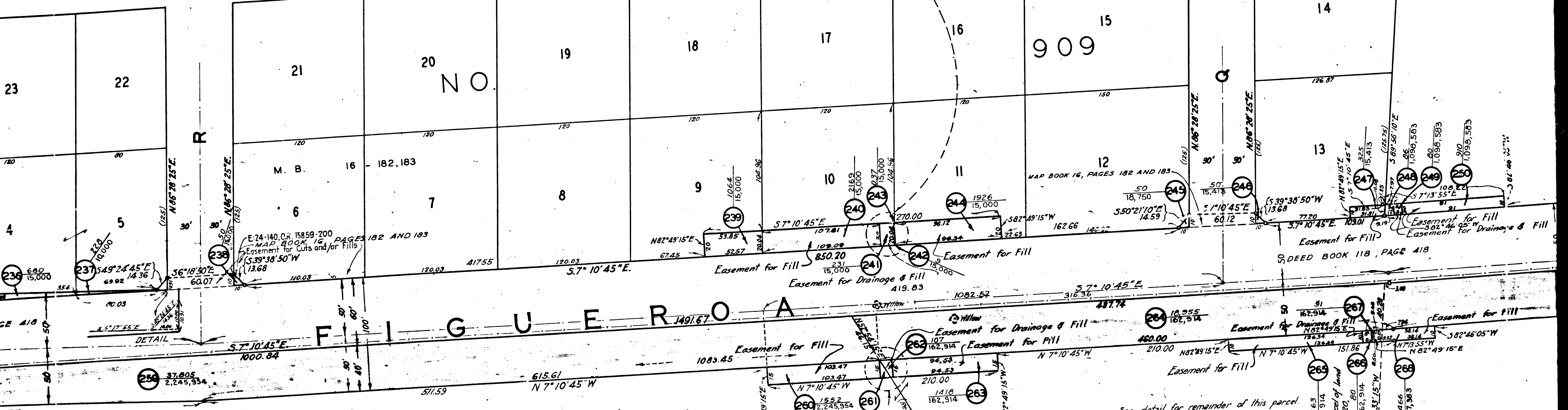
C.F. 1914 2-2

ST.

ST.

RANCO

AVENUE



SUBDIVISION (OF) LOT AND PORTION OF

5

See detail for remainder of this parcel

RECORDERS' FILED MAP NO. 141

112
C.F. 1914 2-2

SAN PEDRO

M. ROCHA

DISTRICT COURT CASE NO. 4666
EXHIBIT "A"
C. F. 118

OFFICIAL RECORDS BOOK 10539, PAGE 389

OFFICIAL RECORDS BOOK 2811, PAGE 171

OFFICIAL RECORDS BOOK 2804, PAGE 224

OFFICIAL RECORDS BOOK 2804, PAGE 224

OFFICIAL RECORDS BOOK 2804, PAGE 224

OFFICIAL RECORDS BOOK 2804, PAGE 224

OFFICIAL RECORDS BOOK 2804, PAGE 224

OFFICIAL RECORDS BOOK 2804, PAGE 224

OFFICIAL RECORDS BOOK 2804, PAGE 224

OFFICIAL RECORDS BOOK 2804, PAGE 224

OFFICIAL RECORDS BOOK 2804, PAGE 224

OFFICIAL RECORDS BOOK 2804, PAGE 224

OFFICIAL RECORDS BOOK 2804, PAGE 224

OFFICIAL RECORDS BOOK 2804, PAGE 224

OFFICIAL RECORDS BOOK 2804, PAGE 224

OFFICIAL RECORDS BOOK 2804, PAGE 224

OFFICIAL RECORDS BOOK 2804, PAGE 224

OFFICIAL RECORDS BOOK 2804, PAGE 224

OFFICIAL RECORDS BOOK 2804, PAGE 224

OFFICIAL RECORDS BOOK 2804, PAGE 224

OFFICIAL RECORDS BOOK 2804, PAGE 224

OFFICIAL RECORDS BOOK 2804, PAGE 224

OFFICIAL RECORDS BOOK 2804, PAGE 224

OFFICIAL RECORDS BOOK 2804, PAGE 224

OFFICIAL RECORDS BOOK 2804, PAGE 224

OFFICIAL RECORDS BOOK 2804, PAGE 224

OFFICIAL RECORDS BOOK 2804, PAGE 224

OFFICIAL RECORDS BOOK 2804, PAGE 224

OFFICIAL RECORDS BOOK 2804, PAGE 224

OFFICIAL RECORDS BOOK 2804, PAGE 224

OFFICIAL RECORDS BOOK 2804, PAGE 224

OFFICIAL RECORDS BOOK 2804, PAGE 224

HARBOR RAILWAY COMPANY

197

198

199

200

201

202

203

204

205

206

207

208

209

210

211

212

213

214

215

216

217

218

219

220

221

222

223

224

225

226

227

228

229

230

231

232

233

234

235

236

237

238

239

240

241

242

243

244

245

246

247

248

249

250

251

252

253

254

255

256

257

258

259

260

261

262

263

264

265

266

267

268

269

270

271

272

273

274

275

276

277

278

279

280

281

282

283

284

285

286

287

288

289

290

291

292

293

294

295

296

297

298

299

300

301

302

303

304

305

306

307

308

309

310

311

312

313

314

315

316

317

318

319

320

321

322

323

324

325

326

327

328

329

330

331

332

333

334

335

336

337

338

339

340

341

342

343

344

345

346

347

348

349

350

351

352

353

354

355

356

357

358

359

360

361

362

363

364

365

366

367

368

369

370

371

372

373

374

375

376

377

378

379

380

381

382

383

384

385

386

387

388

389

390

391

392

393

394

395

396

397

398

399

400

401

402

403

404

405

406

407

408

409

410

411

412

413

414

415

416

417

418

419

420

421

422

423

424

425

426

427

428

429

430

431

432

433

434

435

436

437

438

439

440

441

442

443

444

445

446

447

448

449

450

451

452

453

454

455

456

457

458

459

460

461

462

463

464

465

466

467

468

469

470

471

472

473

474

475

476

477

478

479

480

481

482

483

484

485

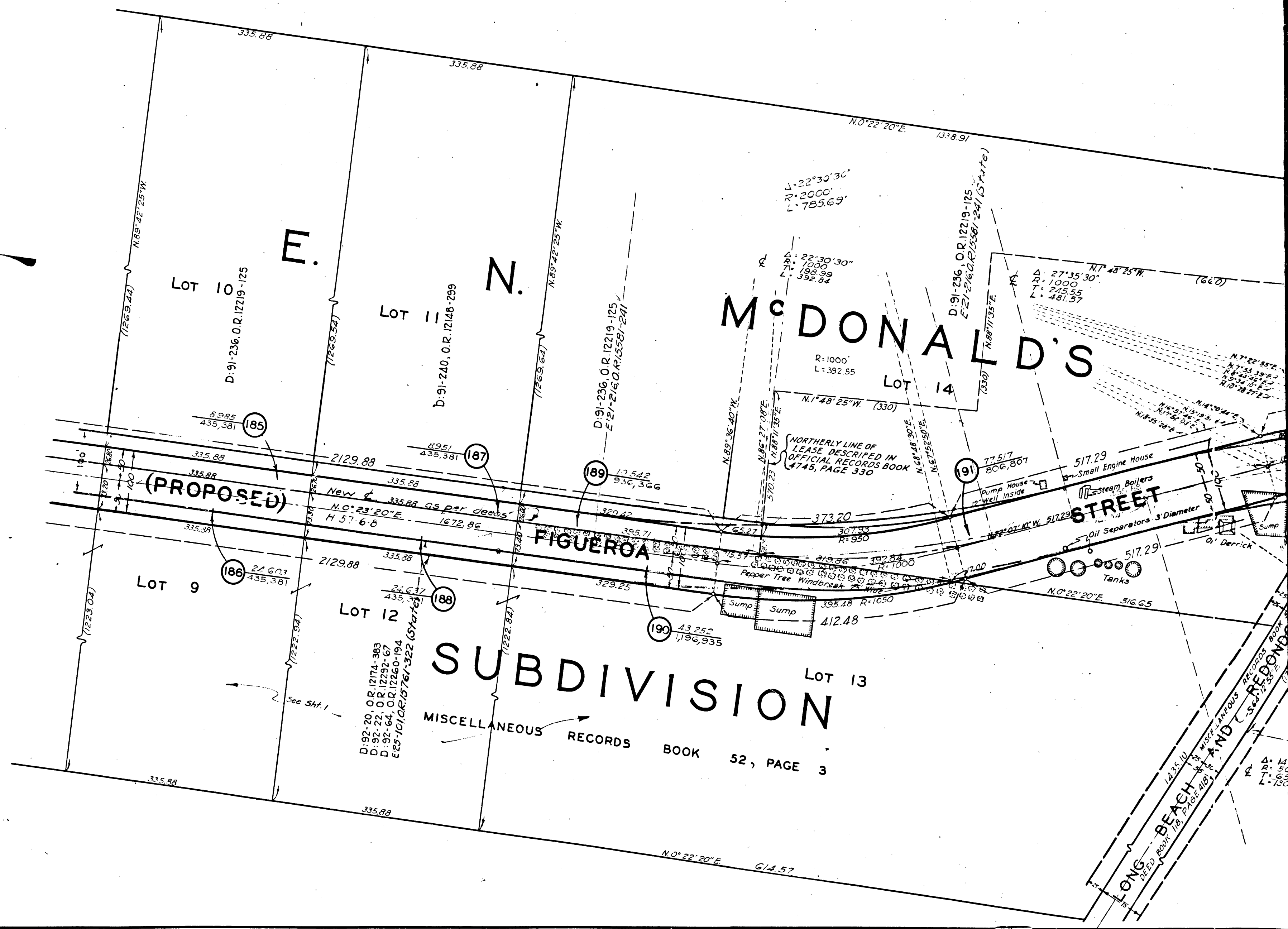
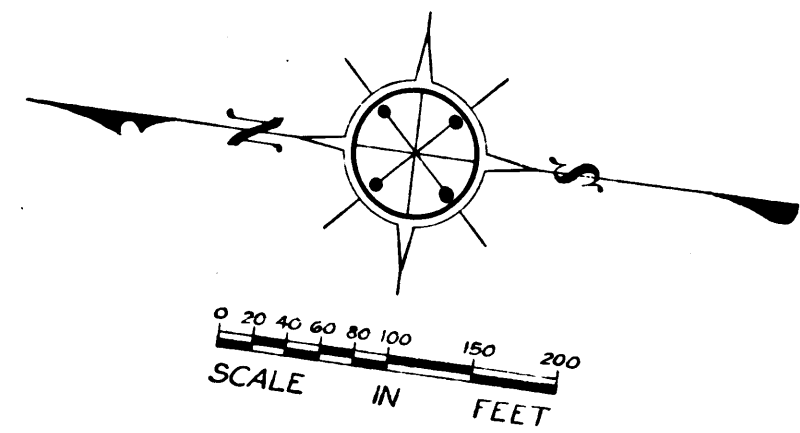
486

487</

0 2 4 6 8 10 12 14 16 18 20 22 24 26 28 30 32 34 36 38 40 42 44 46 48 50 52 54 56 58 60 62 64 66 68 70 72 74 76 78 80 82 84 86 88 90

SHEET NO. 4
CONFIRMATION
FIGUEROA
V. & I. DIST.

SEE SHEET NO. 4
SEE SHEET NO. 3 OF 8 SHEETS
CONFIRMATION
FIGUEROA STREET
V. & I. DISTRICT NO. 565



116

C.F. 1914 2-2