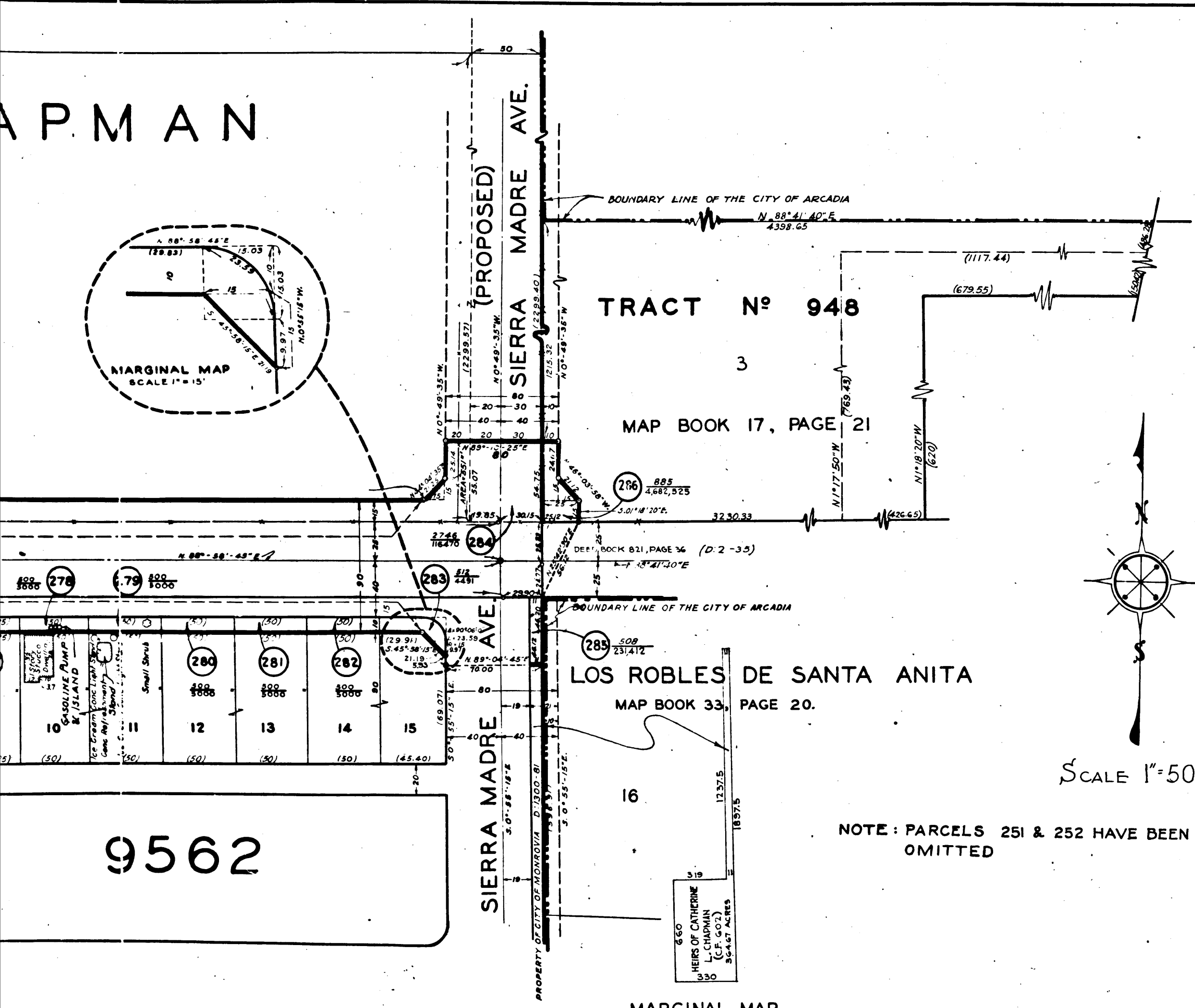
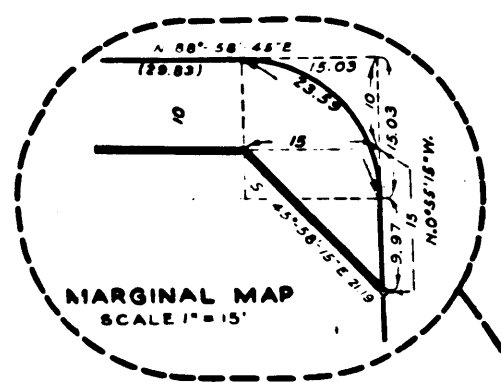


P.M.A.N.



NOTE: PARCELS 251 & 252 HAVE BEEN OMITTED

MARGINAL MAP
NO SCALE

9562

EXHIBIT "A"
**ACQUISITION AND IMPROVEMENT DISTRICT NO. 191
OF THE COUNTY OF LOS ANGELES**

FOR
THE ACQUIRING, OPENING, WIDENING, EXTENDING,
IMPROVEMENT OF AND WORK UPON
FOOTHILL BOULEVARD, ET AL

MAP SHOWING PROPERTY TO BE ACQUIRED, IN ACCORDANCE WITH THE
PROVISIONS OF THE ACQUISITION AND IMPROVEMENT ACT OF 1925,
APPROVED MAY 23, 1925. COMMONLY KNOWN AS THE "MATTOON ACT."
SCALE AS SHOWN. DECEMBER 1931

J. E. ROCKHOLD — COUNTY SURVEYOR

SUBMITTED:
Alfred Jones
ALFRED JONES
CHIEF DEPUTY

APPROVED:
J. E. Rockhold
J. E. ROCKHOLD
COUNTY SURVEYOR

APPROVED AS TO FORM:
EVERETT W. MATTOON, COUNTY COUNSEL

BY: *W. B. Kellan*
DEPUTY COUNTY COUNSEL

LEGEND

PORTIONS COLORED RED OR GREEN SHOW LOCATION, GENERAL ROUTE AND TERMINI OF LAND IN WHICH AN UNQUALIFIED EASEMENT FOR PUBLIC HIGHWAY PURPOSES IS SOUGHT TO BE ACQUIRED.

PORTIONS COLORED RED SHOW LAND IN WHICH THE PUBLIC HAS NO EASEMENT FOR HIGHWAY PURPOSES.

PORTIONS COLORED GREEN SHOW LAND USED BY THE PUBLIC FOR HIGHWAY PURPOSES.

NUMBERS IN CIRCLES INDICATE PARCELS SOUGHT TO BE CONDEMNED.

THE PARCELS ARE DESCRIBED IN PARAGRAPH VII OF THE COMPLAINT.

FIGURES SHOWN IN PARENTHESES () ARE EITHER RECORD DISTANCES OR ARE CALCULATED FROM RECORD DISTANCES.

FIGURES SHOWN THUS:
0,000 INDICATE AREA TO BE ACQUIRED, IN SQUARE FEET.
00,000 INDICATE AREA OF HOLDING, INCLUDING AREA TO BE ACQUIRED, IN SQUARE FEET.

Sht. 44
Superior Court Case No. 332782
Suit for Condemnation
Filed Dec. 24th 1931
County of Los Angeles, Pltff.
vs
The Alderman Co. et al., Def.
Case dismissed Jan. 28, 1935

C.F. 1915 -

A & I. DISTRICT N ^o 191	
SHEET N ^o 4 OF 4 SHEETS	
DRAWN BY	G. A. Shaw Dec. 1929
TRACED BY	E. Davis July, 1930
CHECKED BY	F. L. Parker July, 1930
C.S. INDEX MAP N ^o 44	



OF CATHERINE L. CHAPMAN

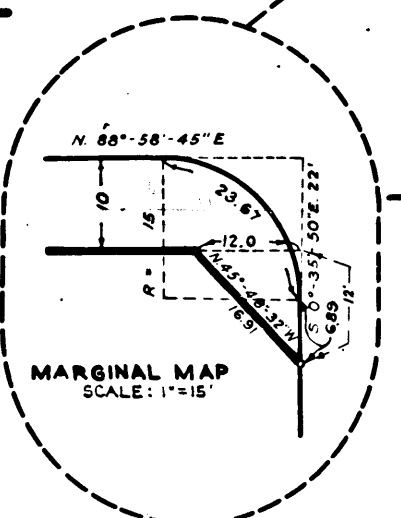
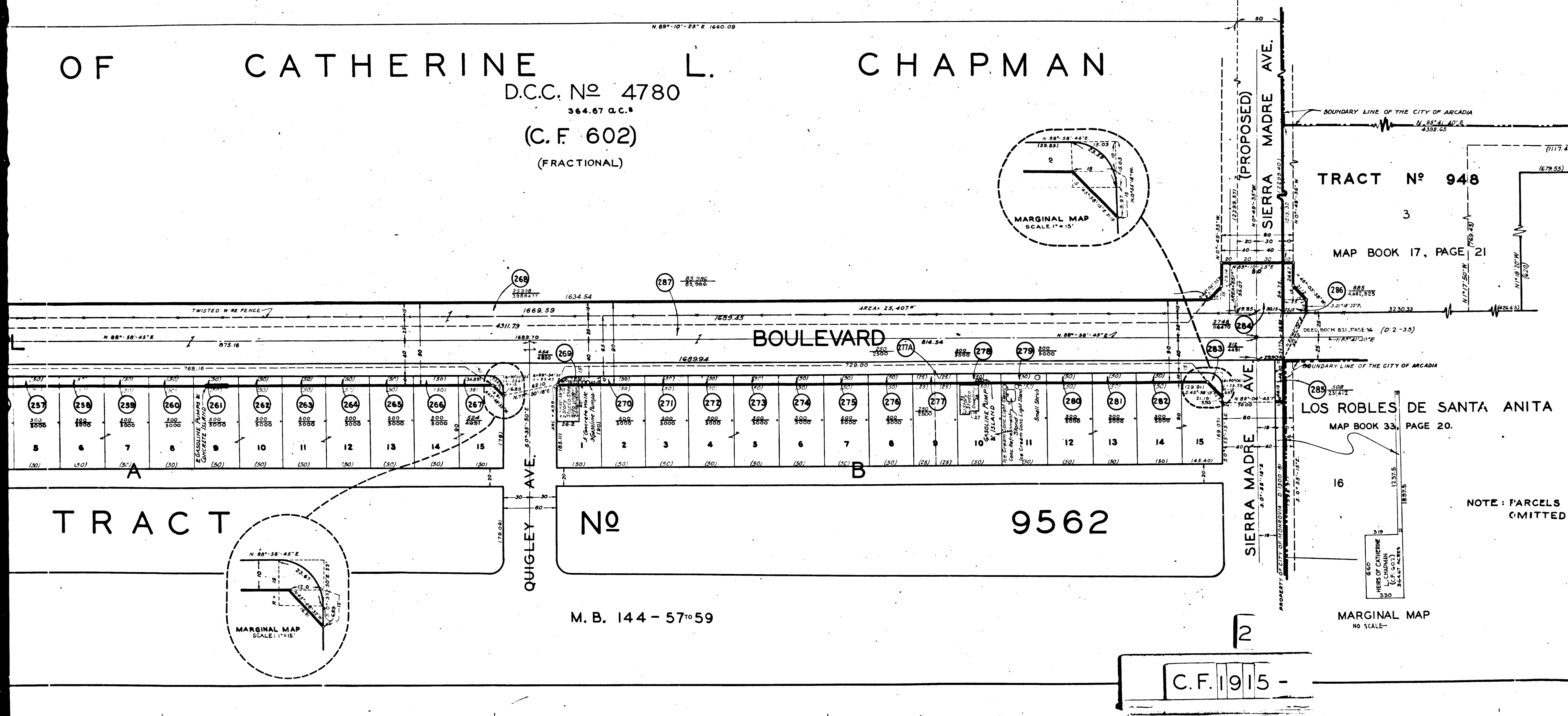
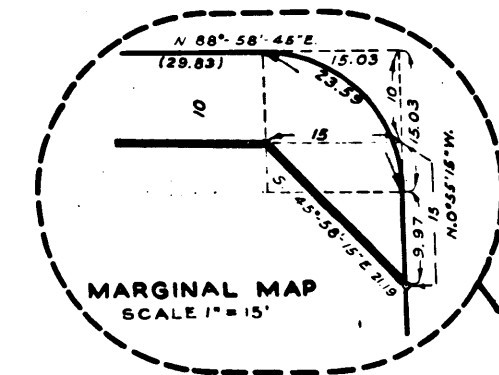
D.C.C. No 4780

364.67 A.C.S.

(C.F. 602)

(FRACTIONAL)

N. 89°-10'-25" E 1660.09



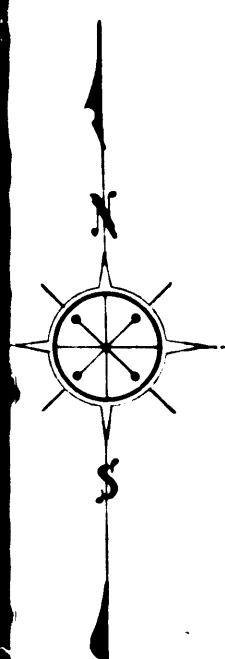
TRACT No 948
3
MAP BOOK 17, PAGE 21

LOS ROBLES DE SANTA ANITA
MAP BOOK 33, PAGE 20.

NOTE: PARCELS 251 OMITTED

M. B. 144 - 57 TO 59

C.F. 1915 -



SCALE: 1" = 50 FT.

See Sheet No. 4

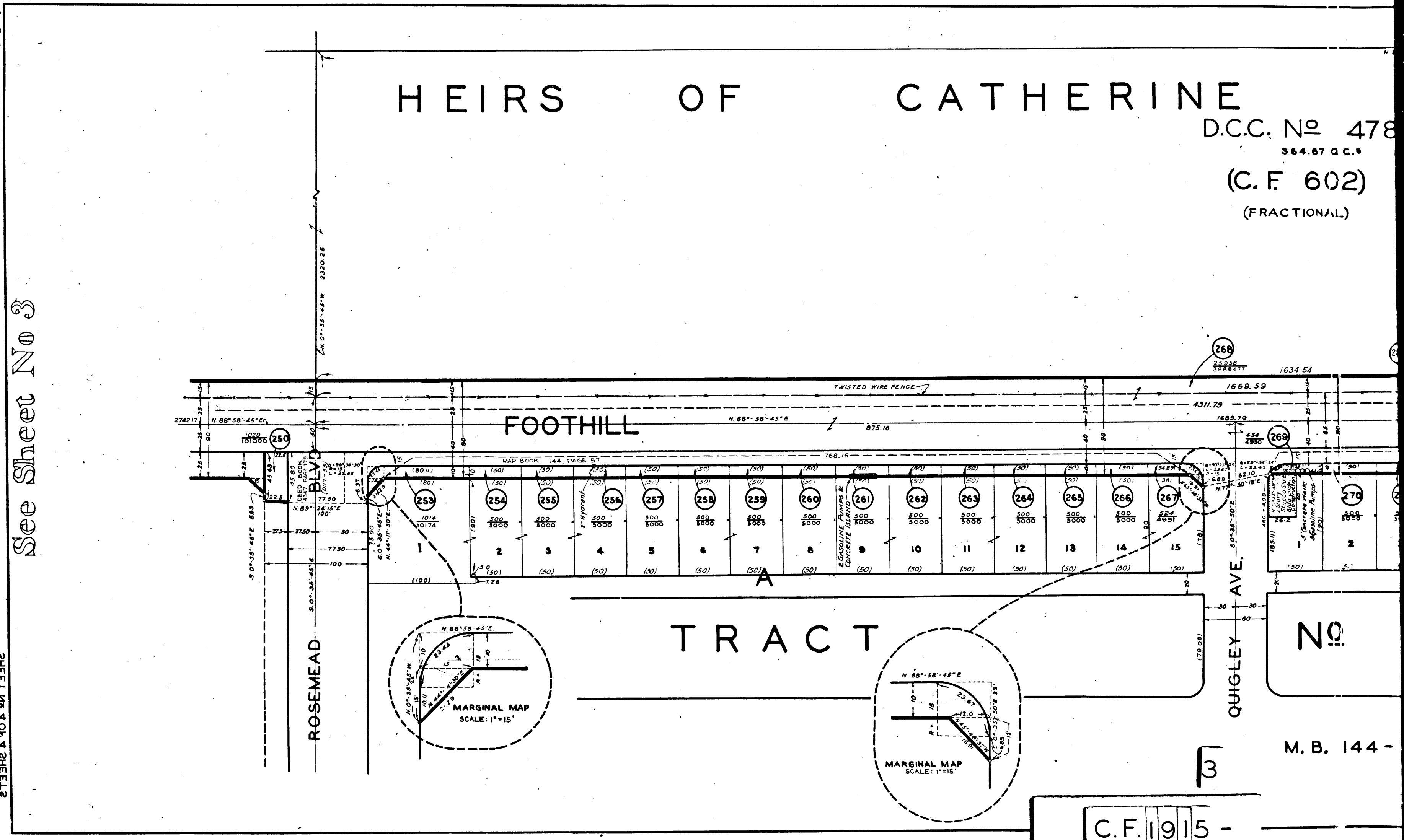
A & I DISTRICT No. 19
 SHEET No. 3 OF 4 SHEETS
 DRAWN BY G. A. SHAW
 TRACED BY SHAW-LUCAS
 CHECKED BY LONGACRE
 C.S. INDEX MAP No. 191

SHEET No. 3 OF 4 SHEETS
 CONDEMNATION MAP
 FOOHLIT BONDEN RD
 A & I DISTRICT No. 19

SHEET No. 3 OF 4 SHEETS
 CONDEMNATION MAP
 FOOHLIT BONDEN RD
 A & I DISTRICT No. 19

СН ТРИТДИ ИА
 РАМ БОТЛЕВР
 ПАМ ИОТДИСТРИКТ
 № 19

SHEET No. 3 OF 4 SHEETS
 CONDEMNATION MAP
 FOOHLIT BONDEN RD
 A & I DISTRICT No. 19



See Sheet No. 3

C.F. 1915 -

M. B. 144 -

A P M A N

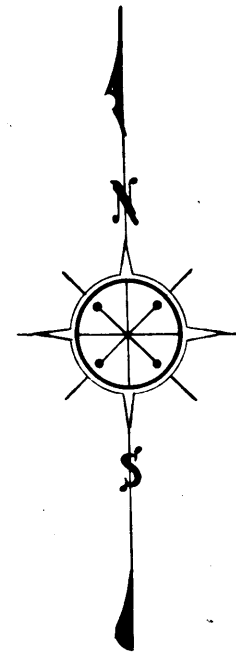
BOULEVARD

9 0 1

(L. S. 15-36)

ROSEMEAD BLVD.

SCALE: 1" = 50 FT.



See Sheet No. 4

A&I DISTRICT No. 101
 SHEET No. 3 OF 4 SHEETS
 DRAWN BY G.A. SHAW
 TRACED BY SHAW-LUCAS
 CHECKED BY LONGACRE
 C.S. INDEX MAP No. 101

SHEET No. 3 OF 4 SHEETS
 CONDEMNATION MAP
 FOOTLIGHT BOULEVARD
 A&I DISTRICT No. 101

SHEET No. 1 OF 4 SHEETS
 CONDEMNATION MAP
 FOOTLIGHT BOULEVARD
 A&I DISTRICT No. 101

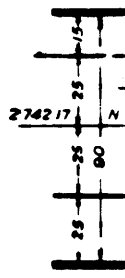
SHEET No. 4 OF 4 SHEETS
 CONDEMNATION MAP
 FOOTLIGHT BOULEVARD
 A&I DISTRICT No. 101

SHEET No. 2 OF 4 SHEETS
 CONDEMNATION MAP
 FOOTLIGHT BOULEVARD
 A&I DISTRICT No. 101

See Sheet No. 3

C.F. 1915 -

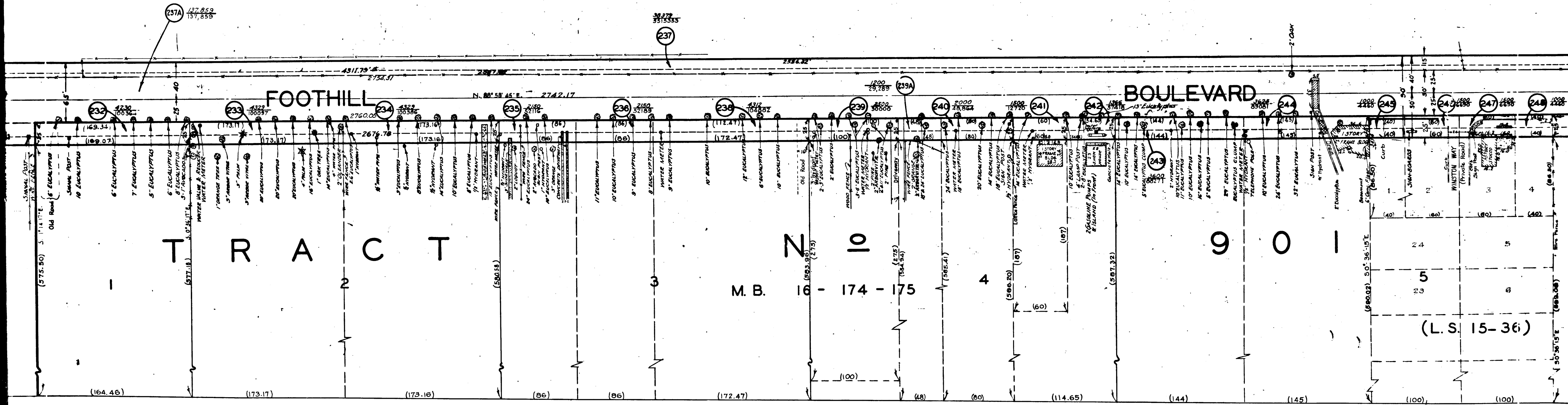
4



N. 89° 10' 25" E. 2306.31'

A. B. C H A P M A N

1254.93 acres
D. C. C. No 4780
(C. F. 602)
(FRACTIONAL)

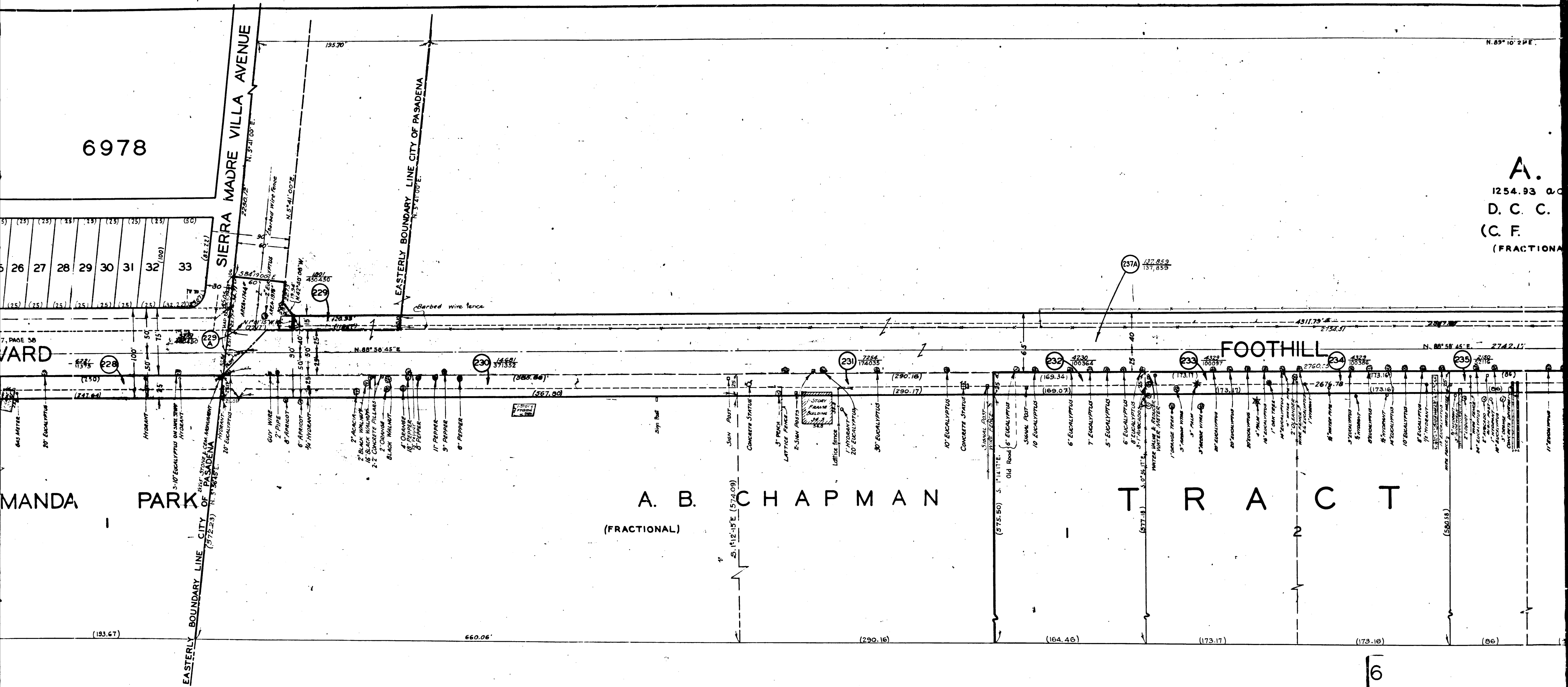


5
C.F. 1915 -

6978

N. 85° 10' 2" E.

A.
1254.93 0.0
D. C. C.
(C. F.
(FRACTIONAL)



7, PAGE 38
WARD

MANDA

PARK

A. B. CHAPMAN

(FRACTIONAL)

FOOTHILL

6

C.F. 1915 -

183
TRACT
185

CENTRAL AVENUE

No 6978

M. B. 105 - 66
J.F. TOWELL
REPLAT
M.B. 5-106

SIERRA MADRE VILLA AVENUE

EASTERLY BOUNDARY LINE CITY OF PASADENA

FOOTHILL BOULEVARD

TITLEY AVENUE

L. J. ROSE

SUBDIVISION OF LAMANDA PARK

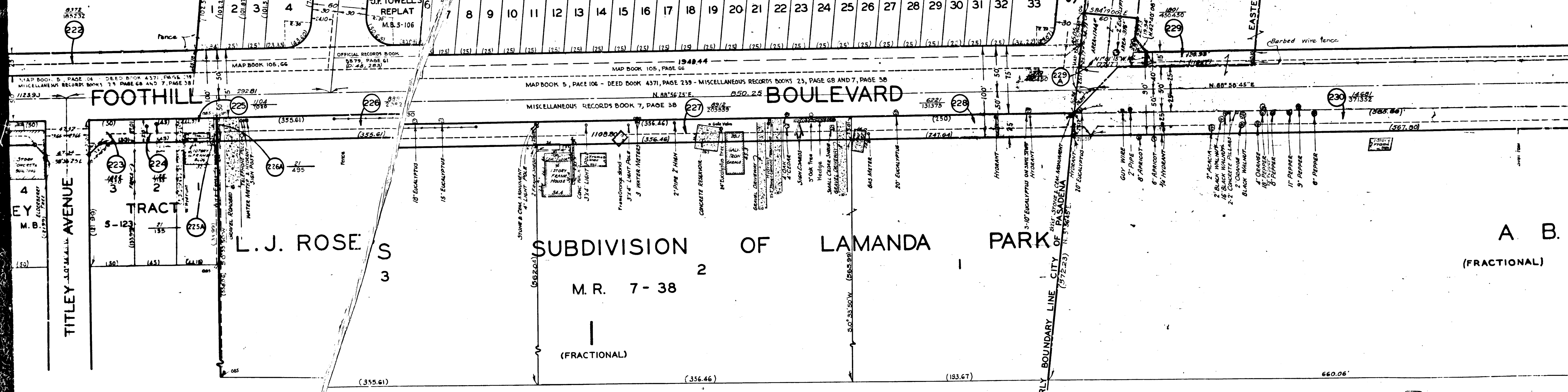
A. B.
(FRACTIONAL)

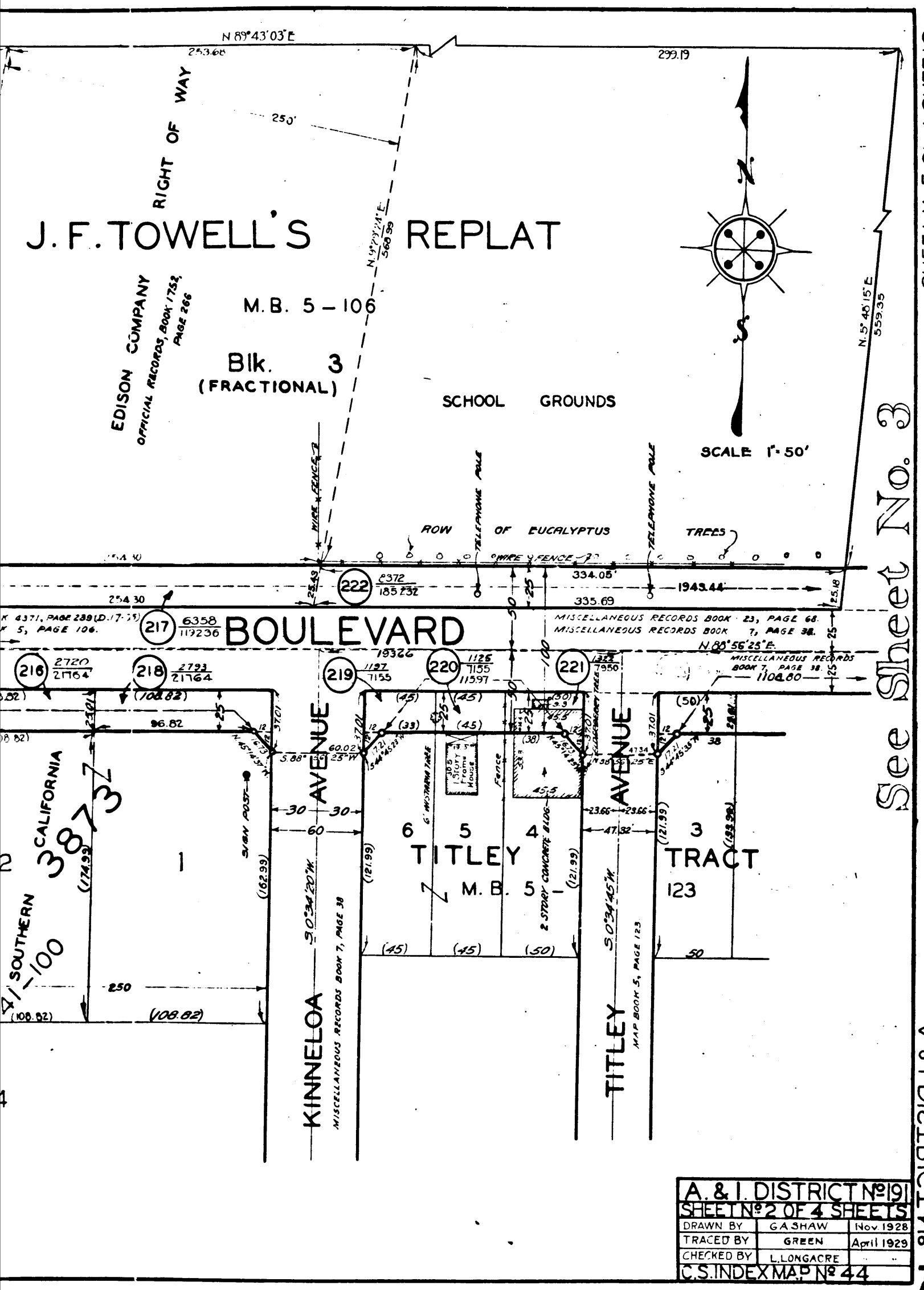
M. R. 7 - 38

(FRACTIONAL)

C.F. 1915 -

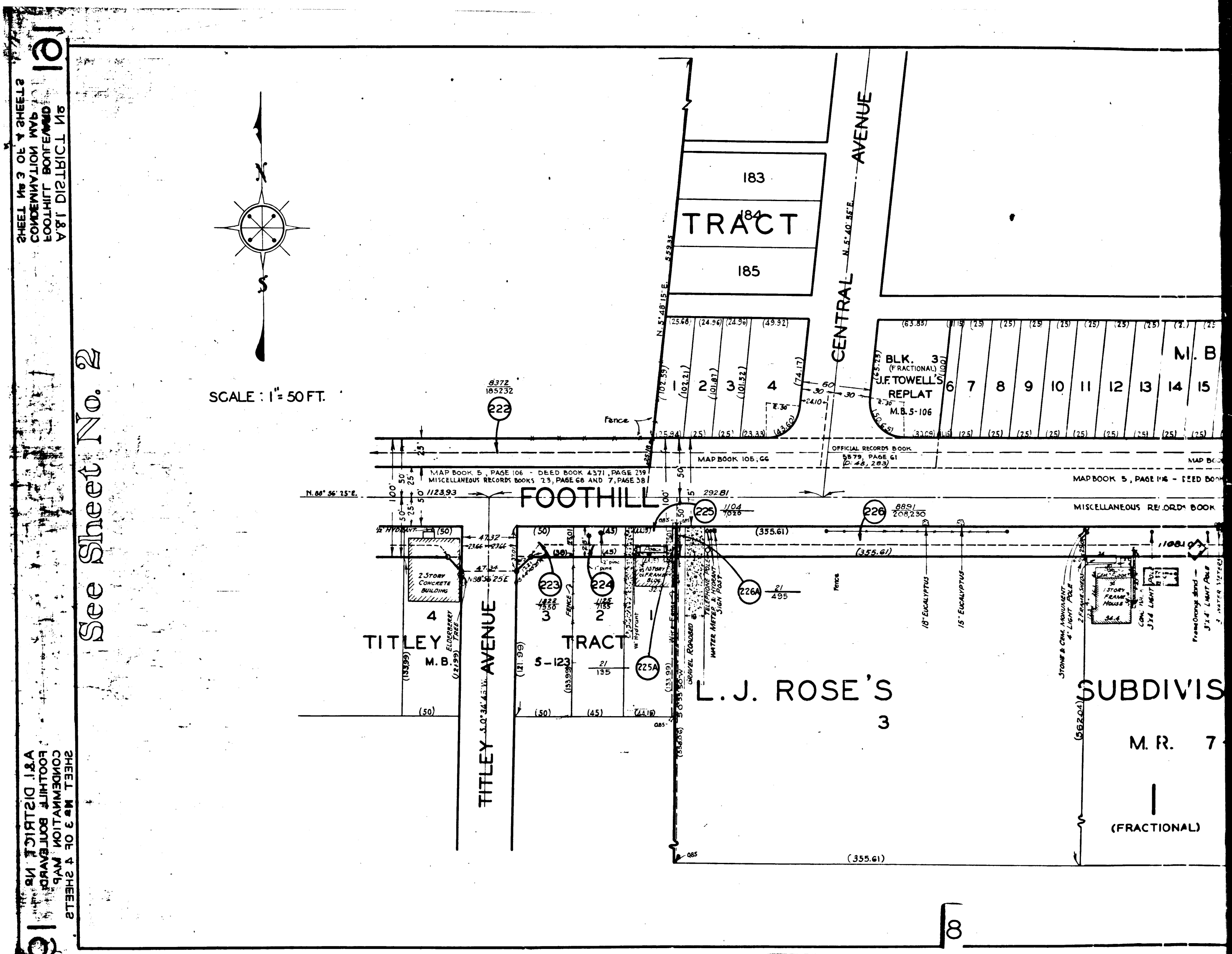
7





SHEET NO. 3 OF 4 SHEETS
CONDENMATION MAP
FOOTHILL BOULEVARD
A & I DISTRICT NO. 91

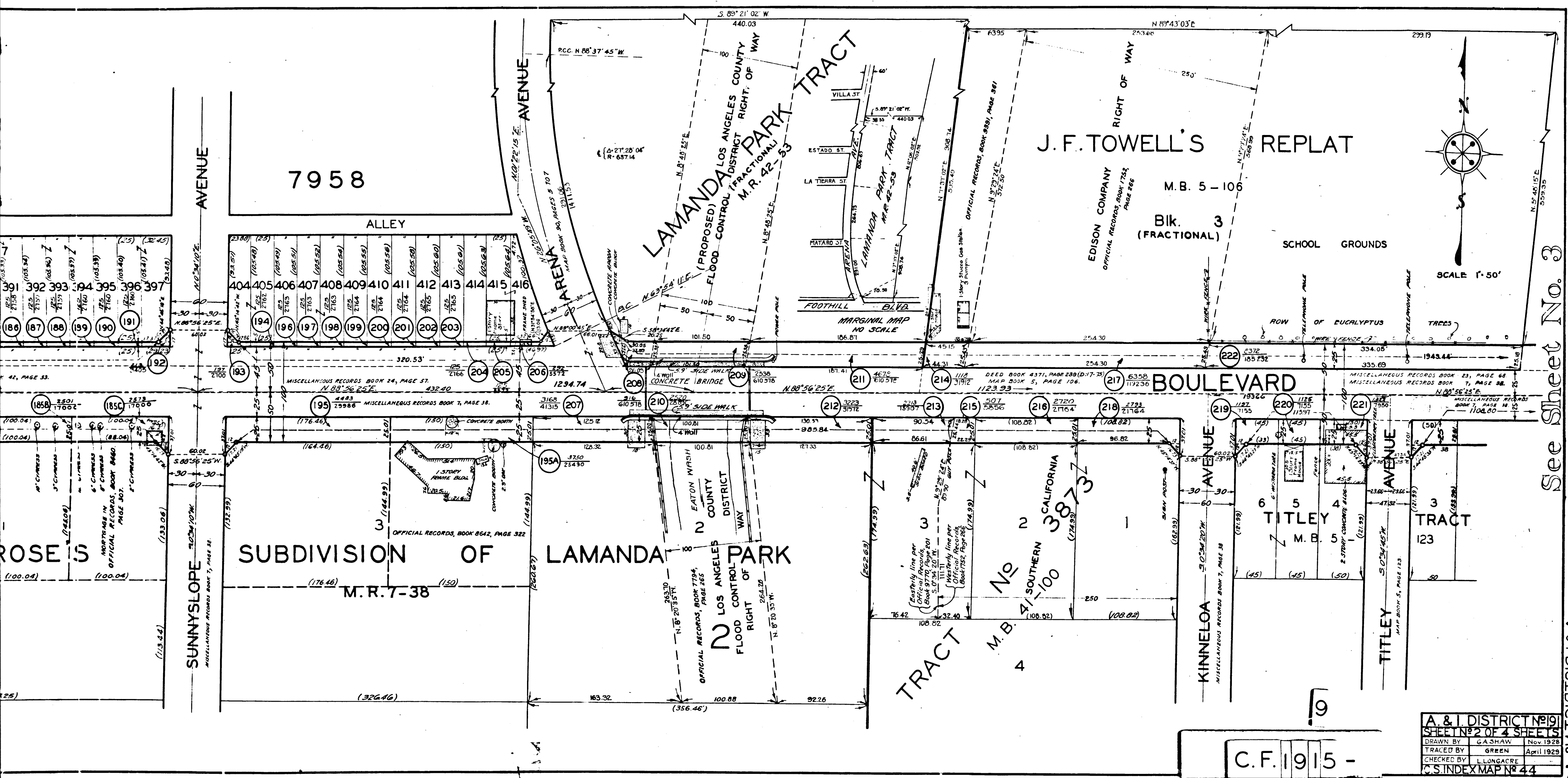
SHEET NO. 5 OF 4 SHEETS
CONDENMATION MAP
FOOTHILL BOULEVARD
A & I DISTRICT NO. 91



SHEET NO. 3 OF 4 SHEETS
CONDENMATION MAP
FOOTHILL BOULEVARD
A & I DISTRICT NO. 91

SHEET NO. 3 OF 4 SHEETS
CONDENMATION MAP
FOOTHILL BOULEVARD
A & I DISTRICT NO. 91

C.F. 1915 - 8



See Sheet No. 3

C.F. 1915 -

A. & I. DISTRICT No. 91
 SHEET No. 2 OF 4 SHEETS
 DRAWN BY G. CASHAW Nov. 1928
 TRACED BY GREEN April 1929
 CHECKED BY L. LONGACRE
 C.S. INDEX MAP No. 44

SHEETS OF 4 SHEETS
 CONDENSATION MAP
 FOOTHILL BOULEVARD
 A. & I. DISTRICT No. 91

TRACT

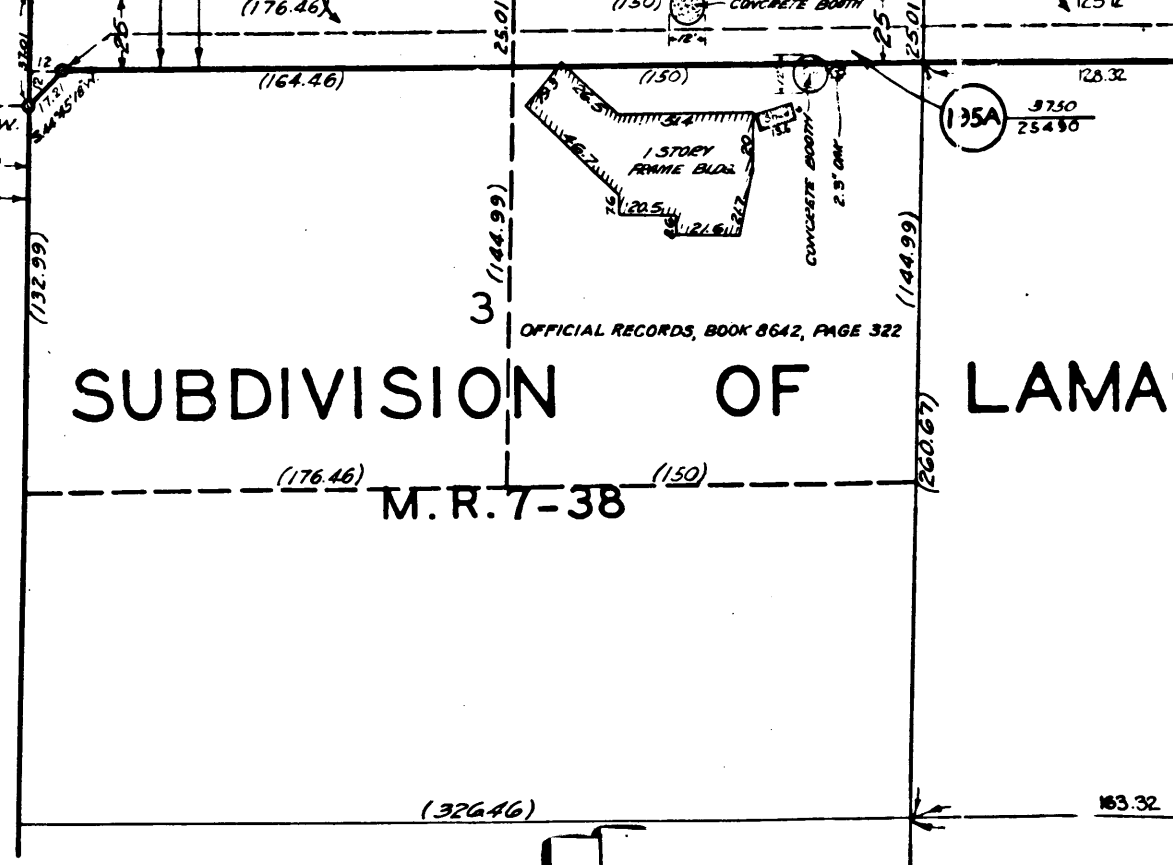
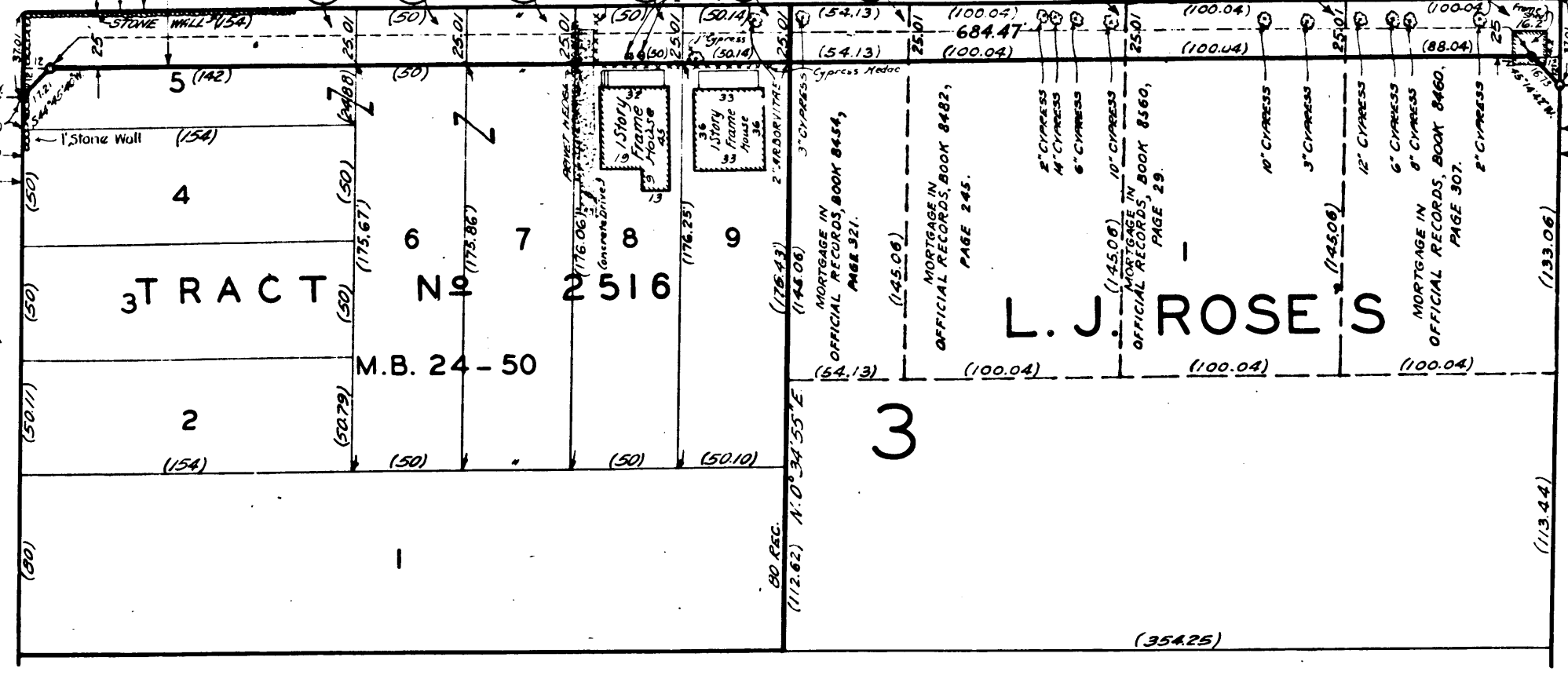
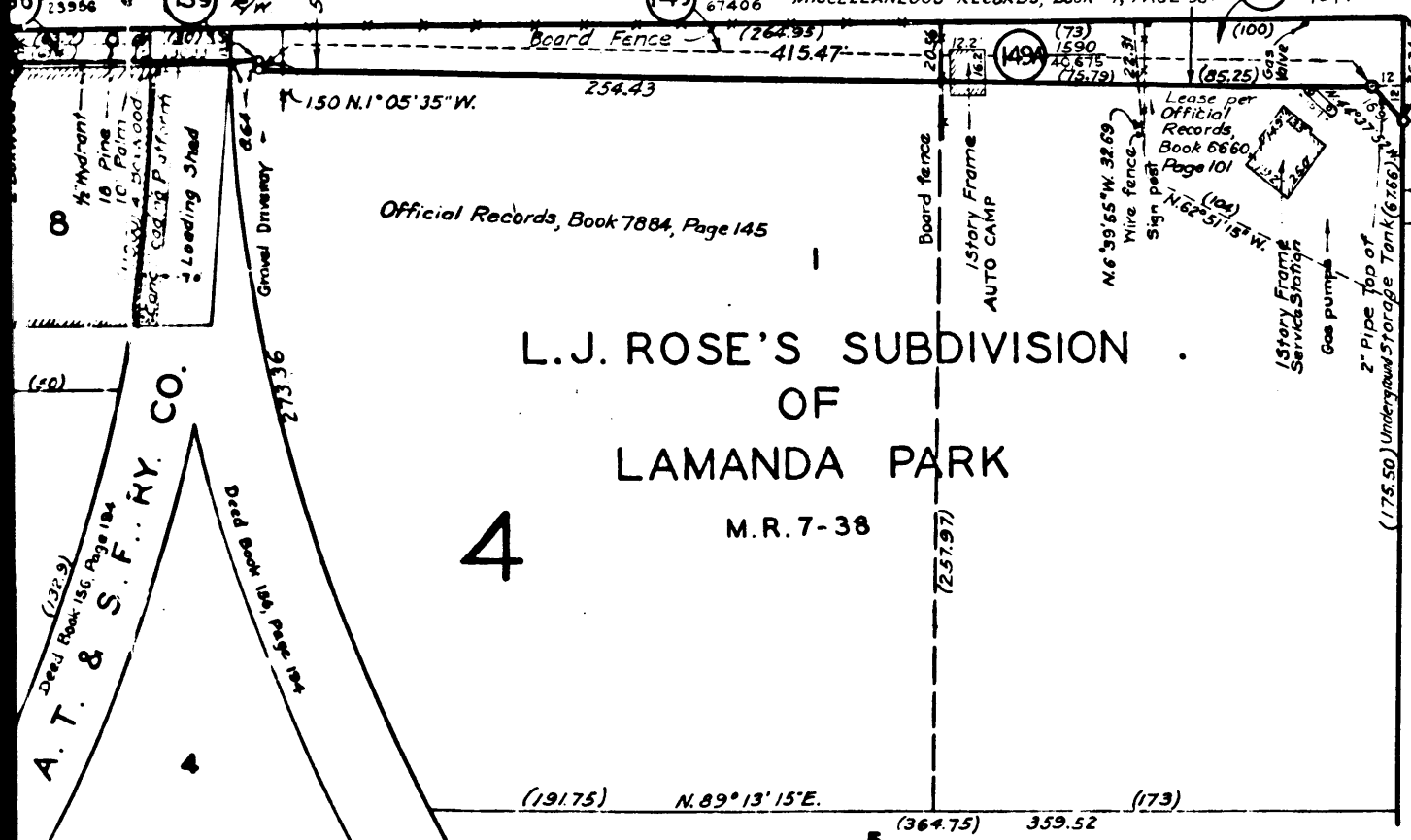
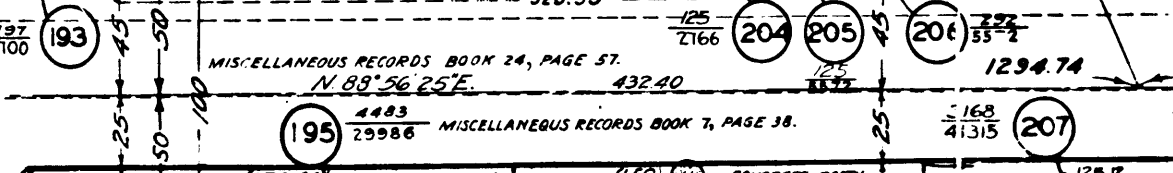
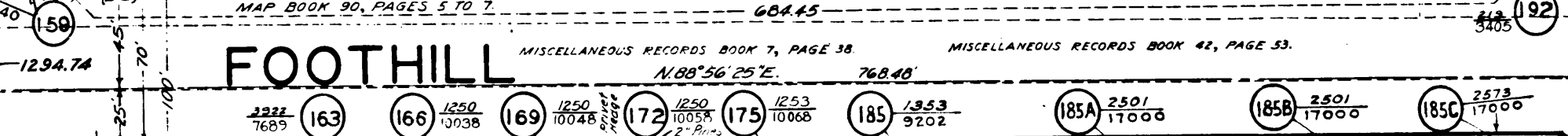
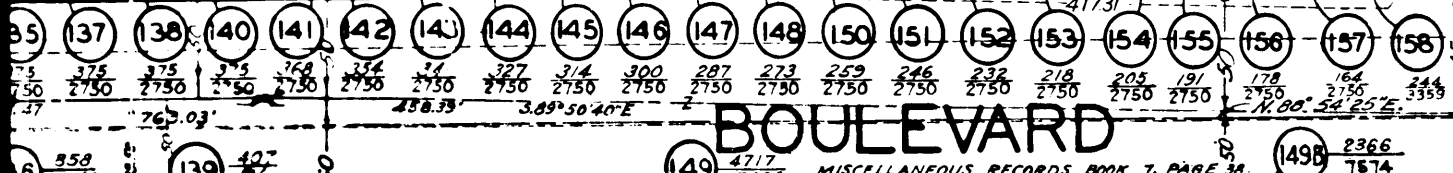
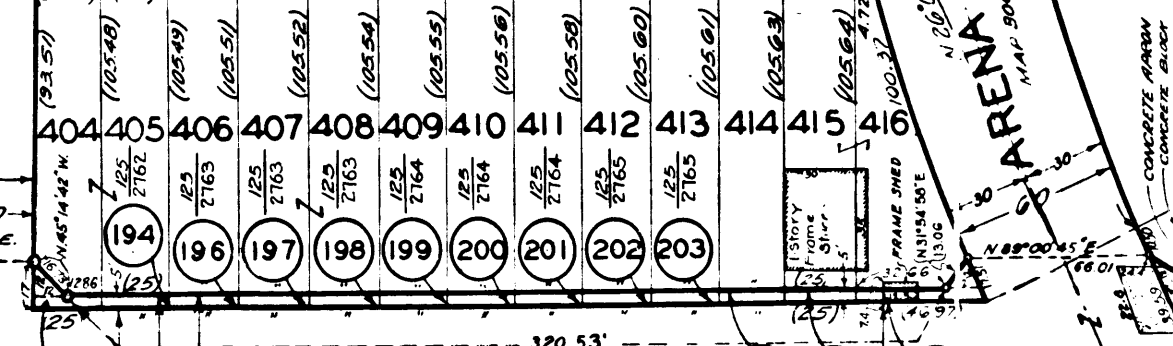
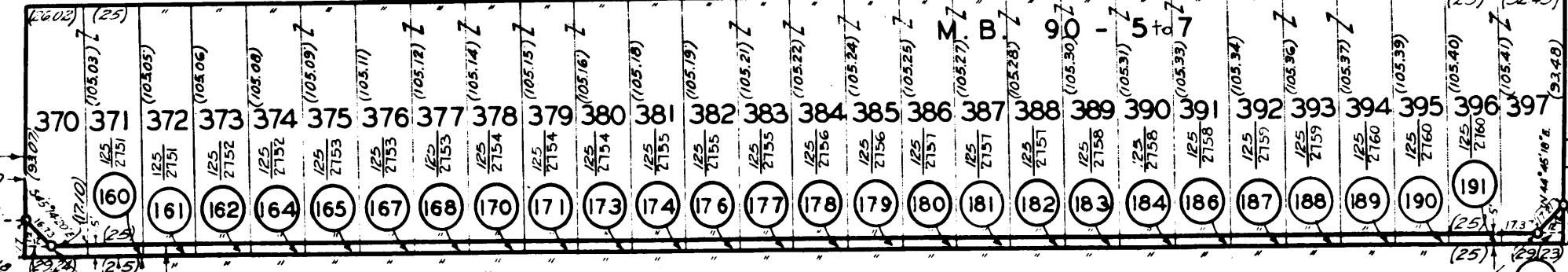
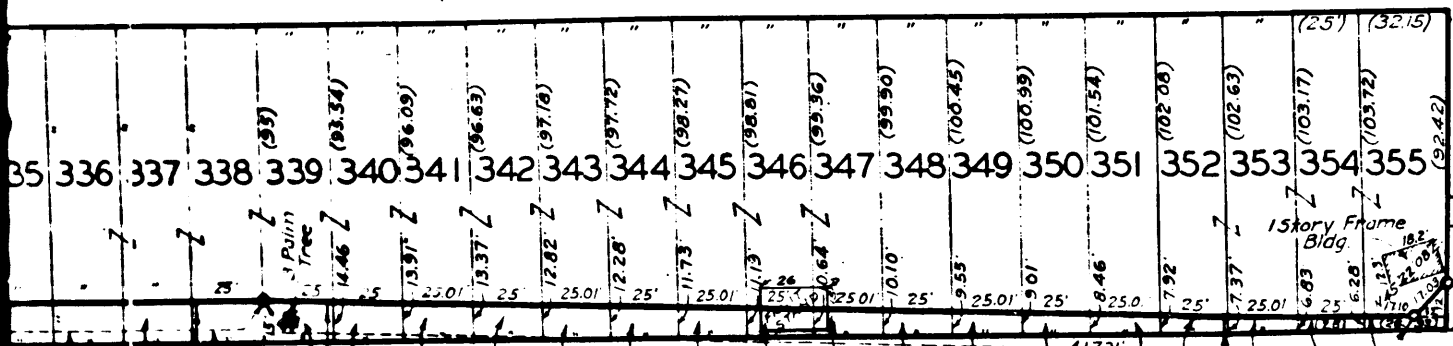
NO

7958

ALLEY

AVENUE

AVENUE



A. T. & S. F. RY. CO.
 150 N. 1° 05' 35" W.
 254.43
 415.47
 150 N. 1° 05' 35" W.
 254.43
 415.47
 150 N. 1° 05' 35" W.
 254.43
 415.47

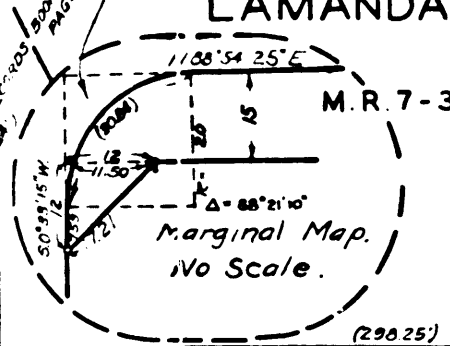
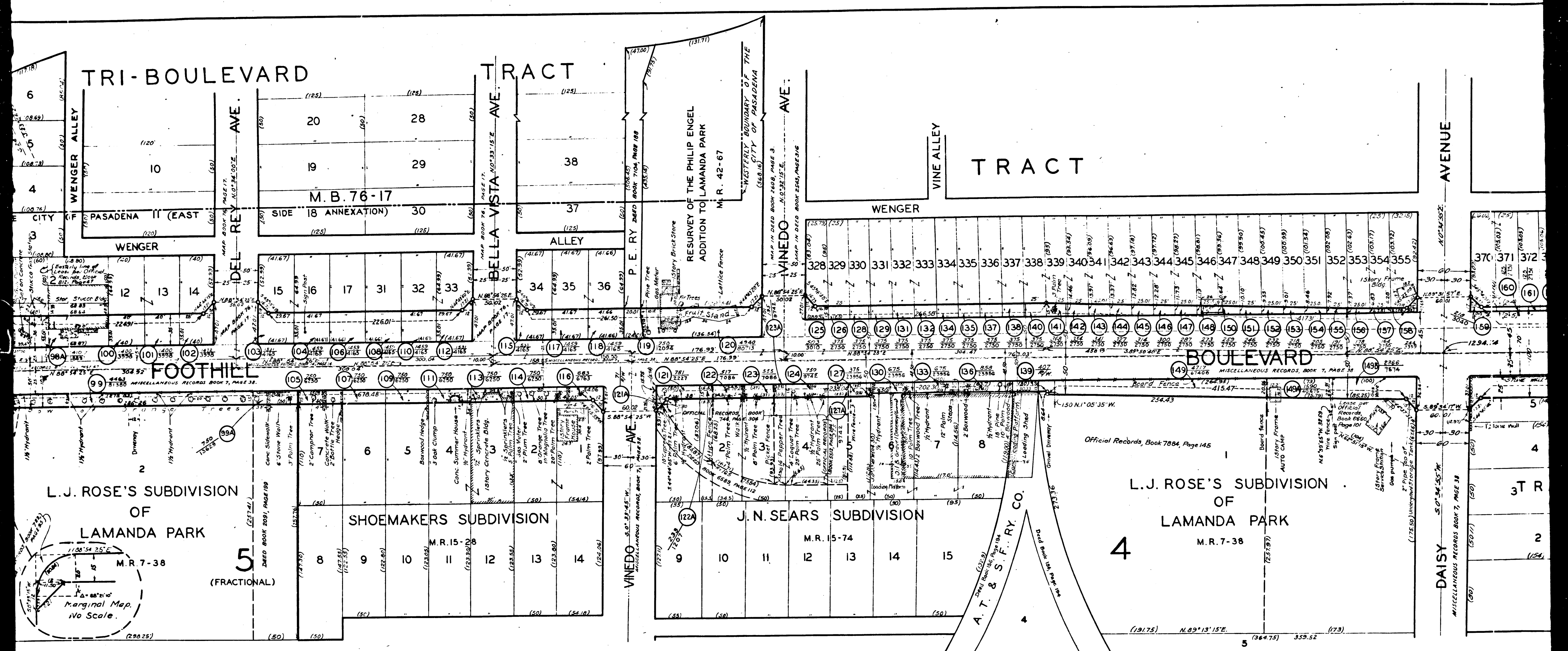
L.J. ROSE'S SUBDIVISION
 OF
 LAMANDA PARK
 M.R. 7-38
 4

TRACT NO
 2516
 M.B. 24-50

L.J. ROSE'S
 SUBDIVISION OF LAMANDA PARK
 M.R. 7-38
 3

L.J. ROSE'S SUBDIVISION OF LAMANDA PARK
 M.R. 7-38
 10

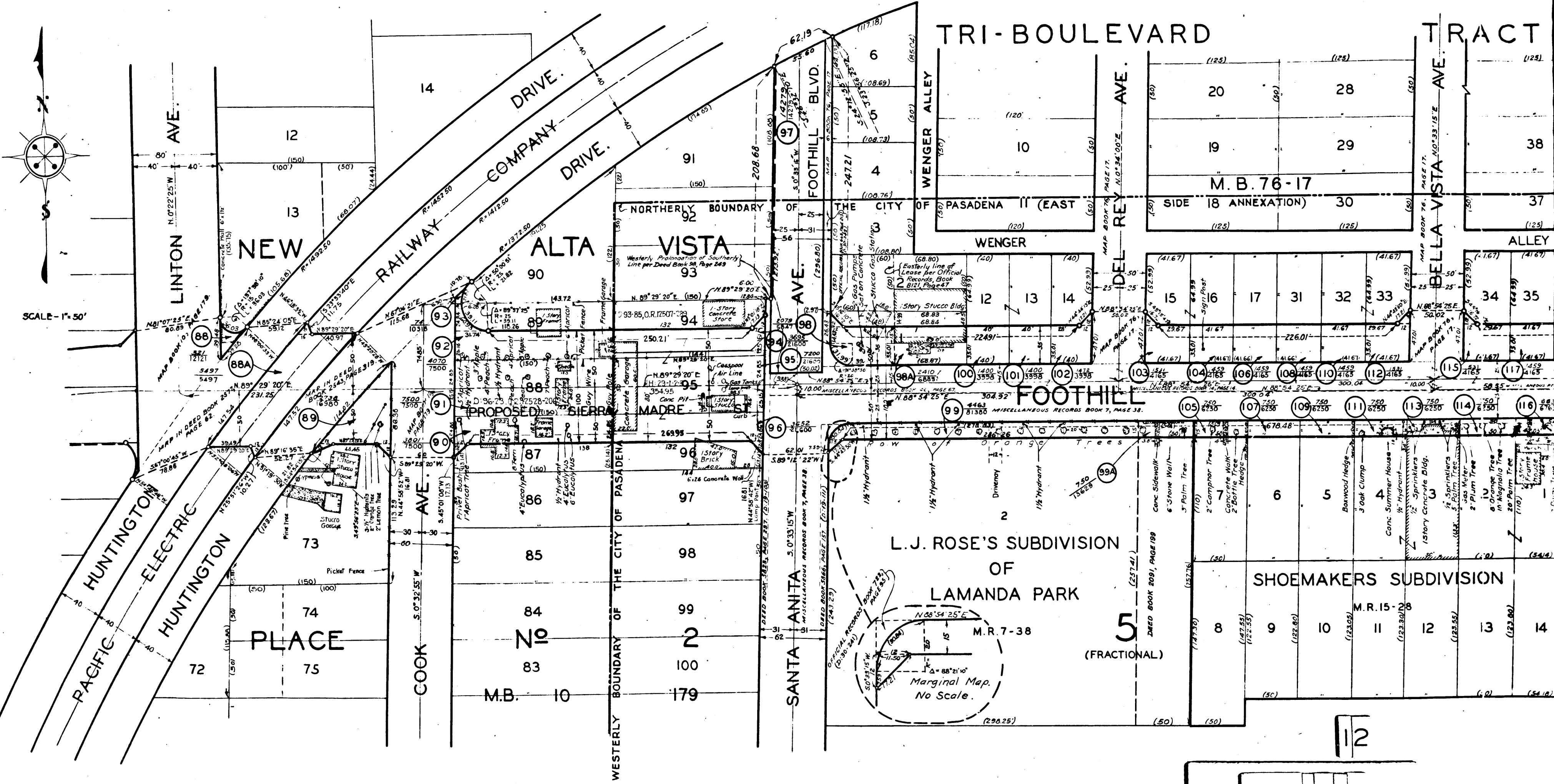
C.F. 1915 -



C.F. 1915 -

See Sheet No. 2

See Sheet No. 1



SHEET No. 1 OF 4 SHEETS
 CONDENSATION MAP
 FOOTHILL BOULEVARD
 A. & I. DISTRICT No. 191

SHEET No. 1 OF 4 SHEETS
 CONDENSATION MAP
 FOOTHILL BOULEVARD
 A. & I. DISTRICT No. 191

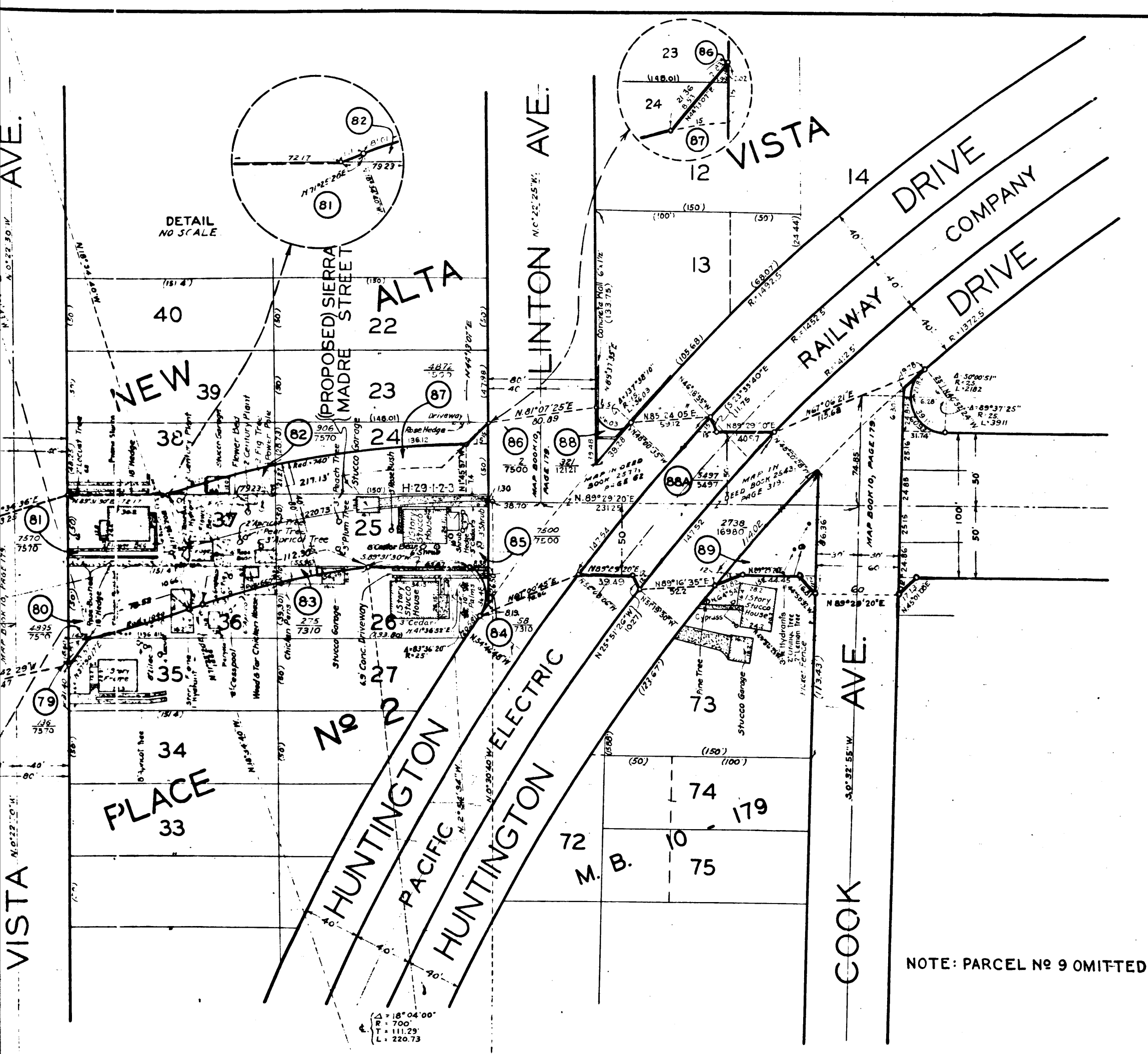
SHEET No. 5 OF 4 SHEETS
 CONDENSATION MAP
 FOOTHILL BOULEVARD
 A. & I. DISTRICT No. 191

SHEET No. 5 OF 4 SHEETS
 CONDENSATION MAP
 FOOTHILL BOULEVARD
 A. & I. DISTRICT No. 191

DISTRICT No. 191
 OF 4 SHEETS
 A. SHAW NOV 1923
 H. LUCAS APR 1925
 L. C. MACHRE
 MAP No. 4

C.F. 1915 -

12



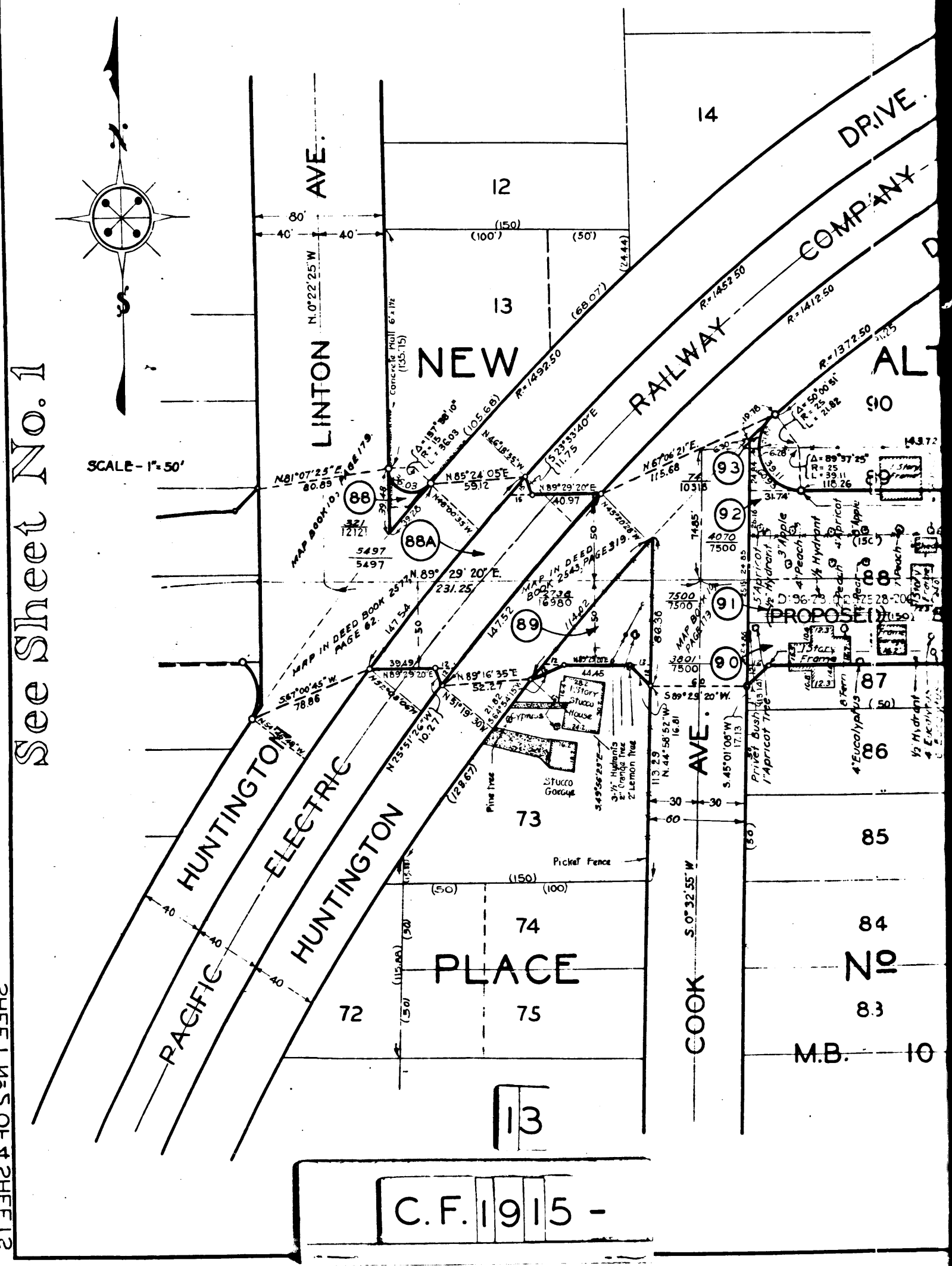
A & L DISTRICT No 191
 SHEET NO 1 OF 4 SHEETS
 DRAWN BY G. A. SHAW NOV 1928
 TRACED BY L. H. LUCAS APR 1929
 CHECKED BY L. LONGACRE
 C.S. INDEX MAP NO. 44

See Sheet No. 2

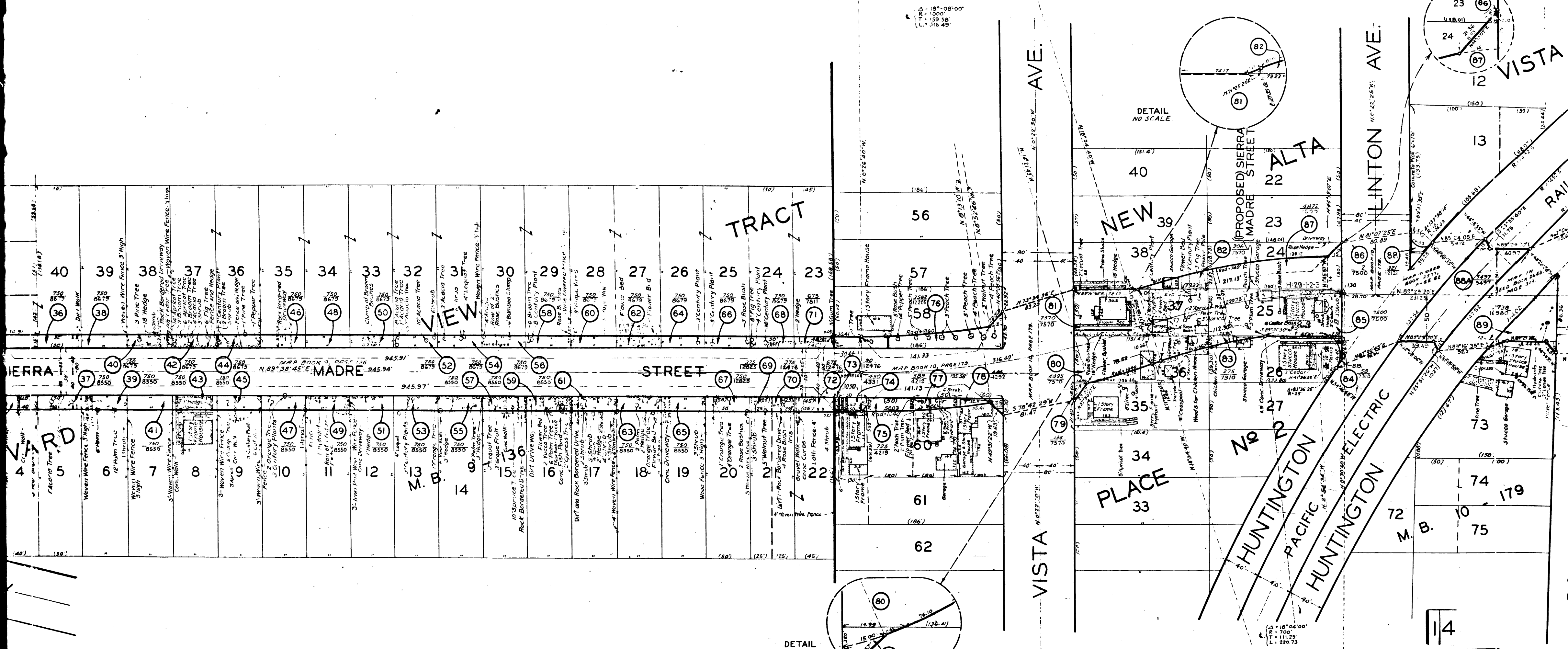
SHEET No 1 OF 4 SHEETS
 CONDEMNATION MAP
 FOOTLIGHT BOULEVARD
 V&I DISTRICT No. 191

SHEET No 1 OF 4 SHEETS
 CONDEMNATION MAP
 FOOTLIGHT BOULEVARD
 V&I DISTRICT No. 191

SHEET No 1 OF 4 SHEETS
 CONDEMNATION MAP
 FOOTLIGHT BOULEVARD
 V&I DISTRICT No. 191



C.F. 1915 -

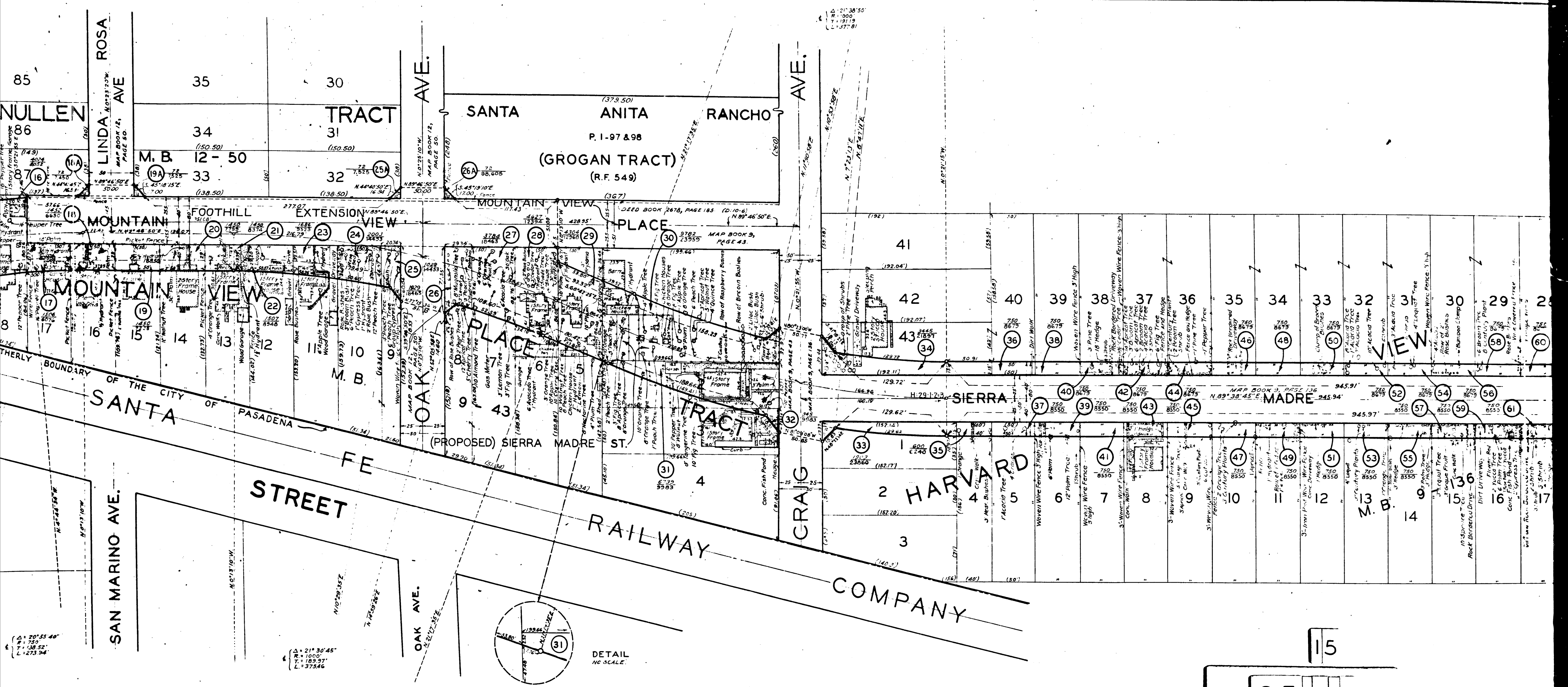


S. 18° 08' 00"
 R. 1000
 T. 159 58
 L. 1 316 49

DETAIL
 NO SCALE

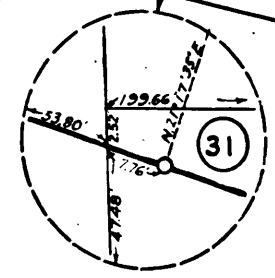
DETAIL
 NO SCALE

C.F. 1915 -



$\Delta = 20' 55' 48''$
 $R = 750$
 $T = 130.52'$
 $L = 273.94'$

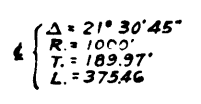
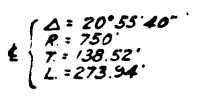
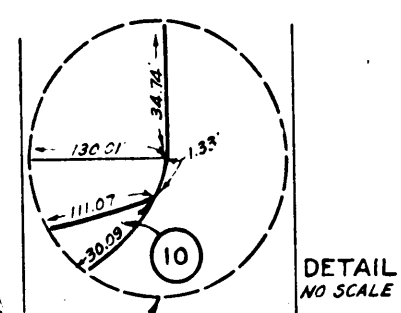
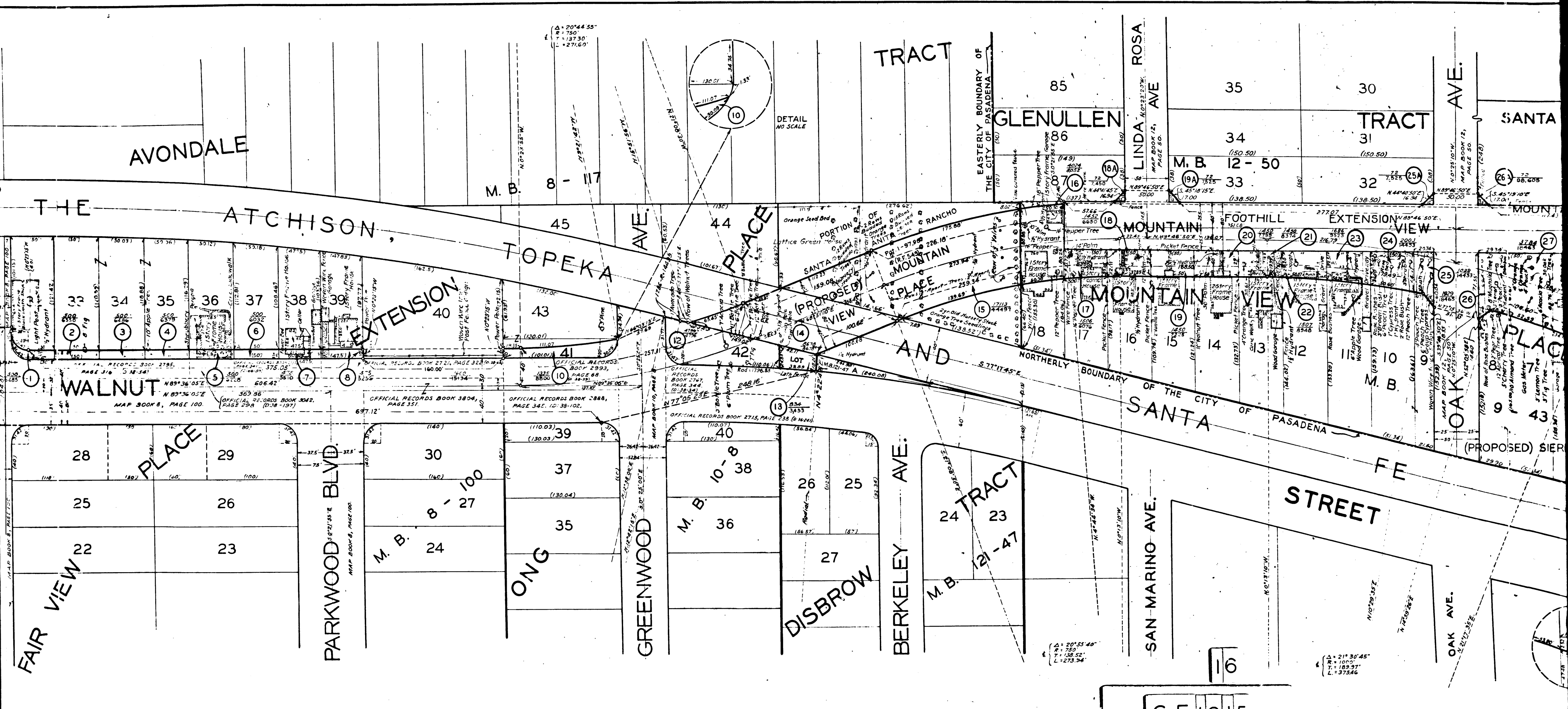
$\Delta = 21' 30' 45''$
 $R = 1000$
 $T = 189.91'$
 $L = 375.46'$



DETAIL
NO SCALE.

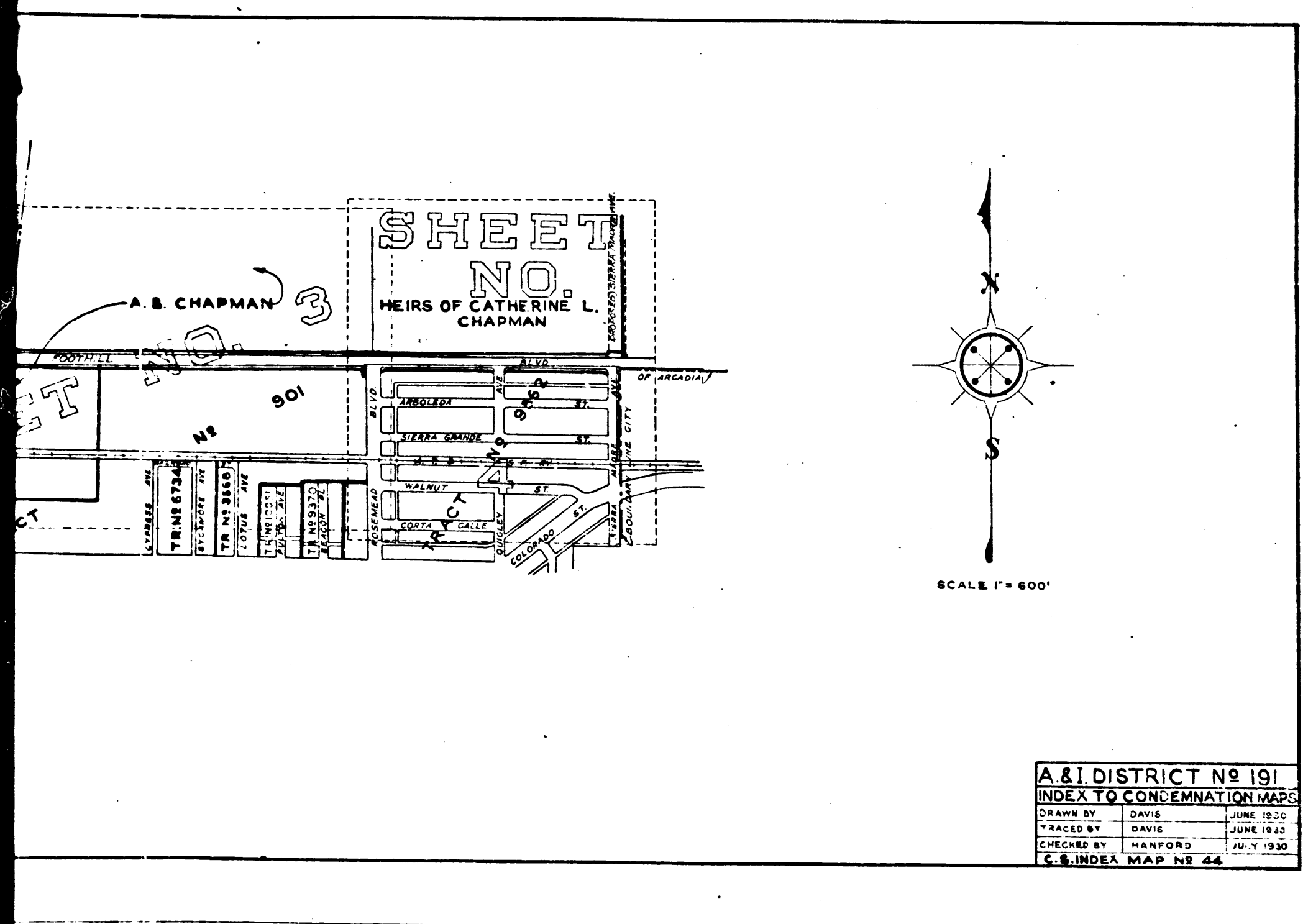
15

C.F. 1915 -



C.F. 1915 -

16



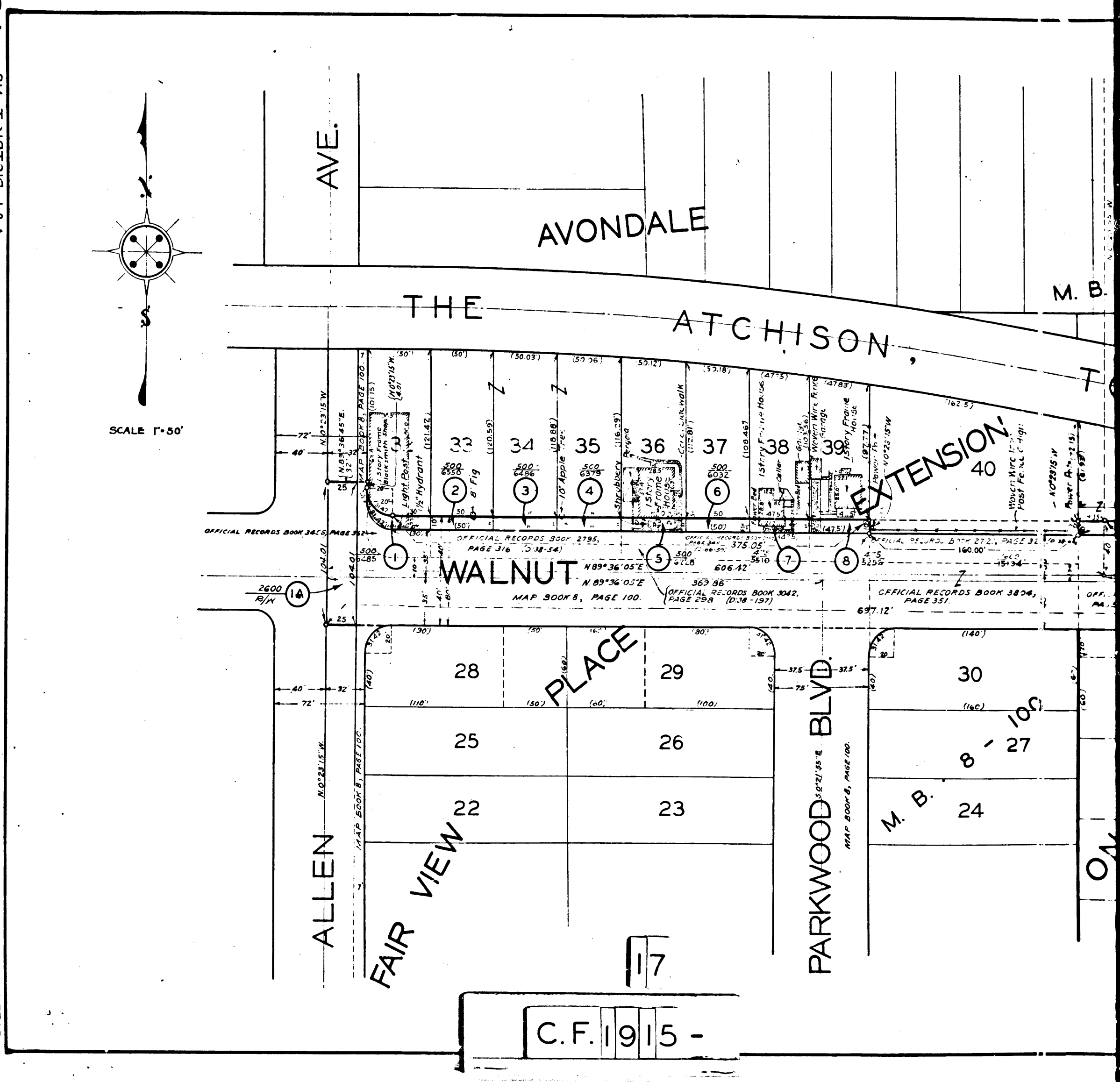
SHEET NO. 3
HEIRS OF CATHERINE L. CHAPMAN

A & I DISTRICT NO 191		
INDEX TO CONDEMNATION MAPS		
DRAWN BY	DAVIS	JUNE 1930
TRACED BY	DAVIS	JUNE 1943
CHECKED BY	HANFORD	JULY 1930
C.S. INDEX MAP NO 44		

INDEX TO CONDEMNATION MAPS
 A & I DISTRICT NO 191

INDEX TO CONDEMNATION MAPS
 A & I DISTRICT NO 191

SHEET NO. 1 OF 4 SHEETS
 CONDEMNATION MAP
 FOOTHILL BOULEVARD
 A & I DISTRICT NO. 191

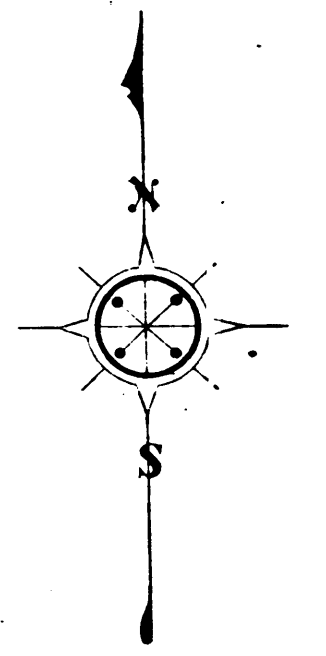
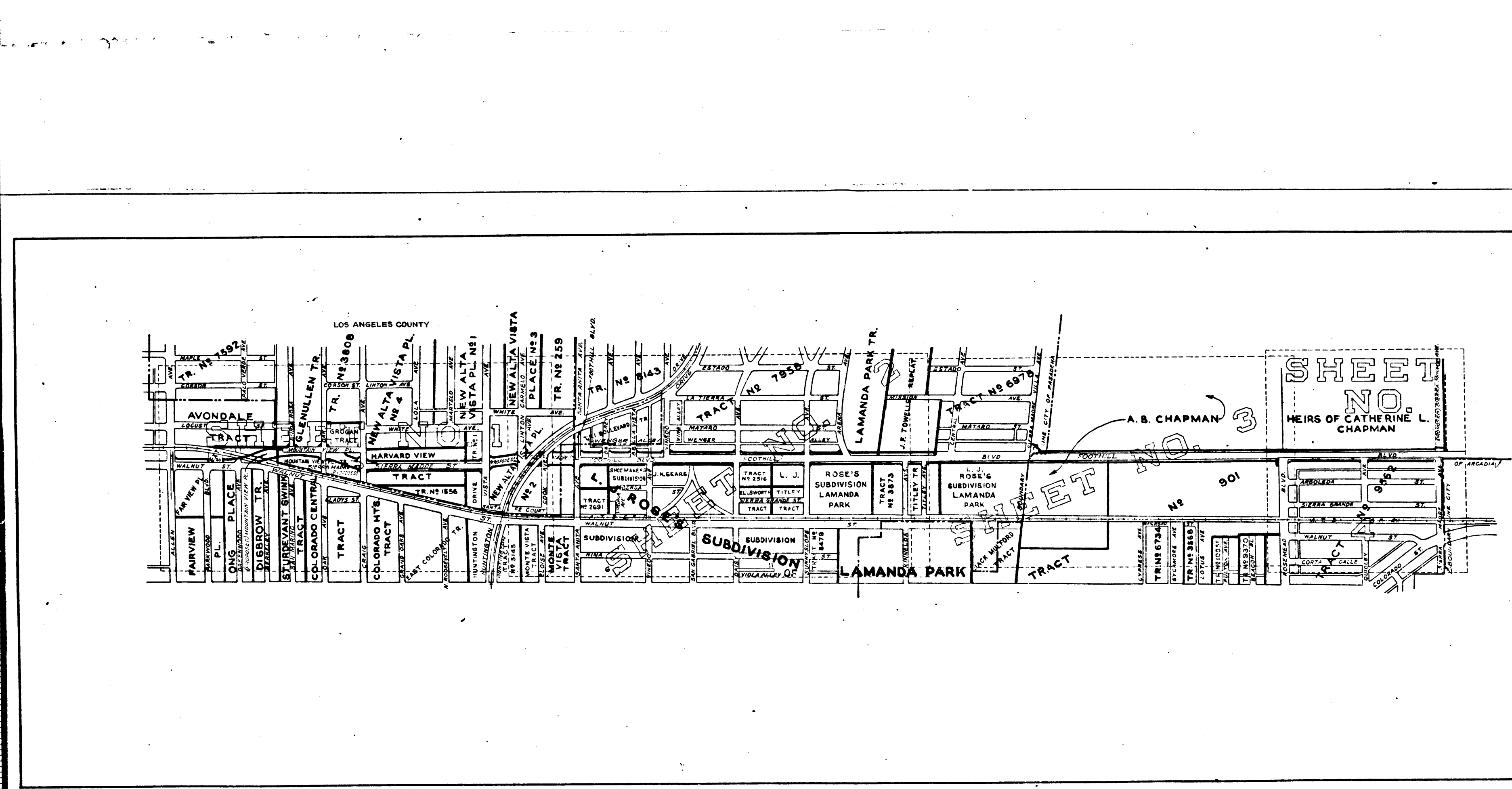


C.F. 1915 -

SHEET NO. 4 OF 4 SHEETS
 CONDEMNATION MAP
 FOOTHILL BOULEVARD
 A & I DISTRICT NO. 191

957

VENUE



SCALE 1" = 600'

A & I
INDEX
DRAWN BY
TRACED BY
CHECKED BY
G. S. INDEA

18
C.F. 1915 -