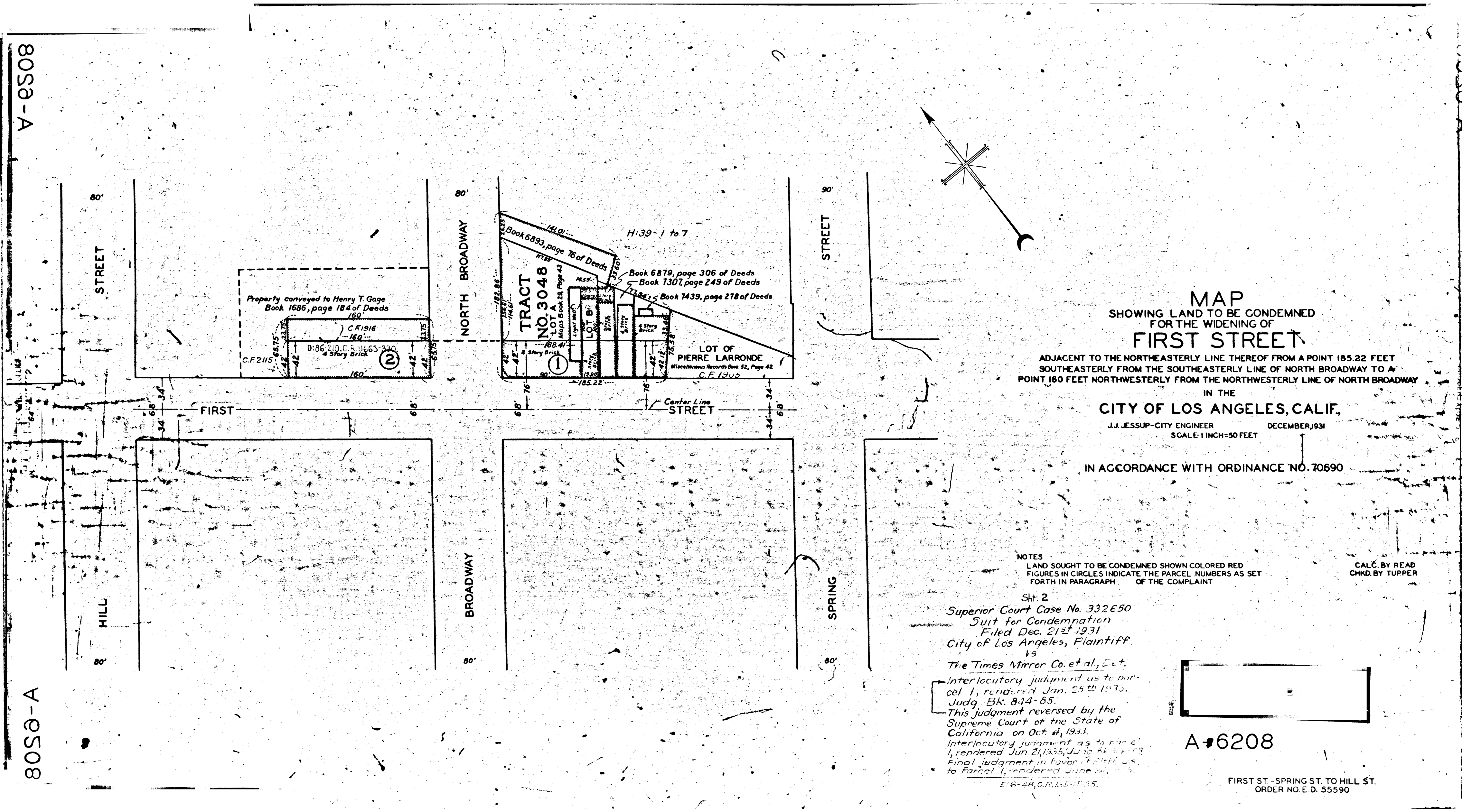


8050-A

8050-A

8050-A

8050-A



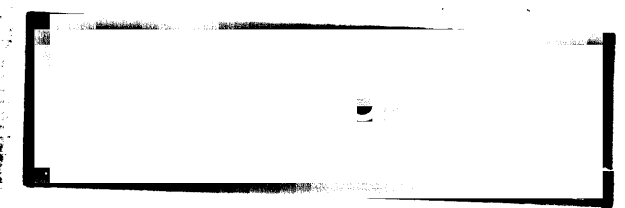
MAP  
 SHOWING LAND TO BE CONDEMNED  
 FOR THE WIDENING OF  
**FIRST STREET**  
 ADJACENT TO THE NORTHEASTERLY LINE THEREOF FROM A POINT 185.22 FEET  
 SOUTHEASTERLY FROM THE SOUTHEASTERLY LINE OF NORTH BROADWAY TO A  
 POINT 160 FEET NORTHWESTERLY FROM THE NORTHWESTERLY LINE OF NORTH BROADWAY  
 IN THE  
**CITY OF LOS ANGELES, CALIF.**  
 J.J. JESSUP-CITY ENGINEER DECEMBER, 1931  
 SCALE-1 INCH=50 FEET

IN ACCORDANCE WITH ORDINANCE NO. 70690

NOTES  
 LAND SOUGHT TO BE CONDEMNED SHOWN COLORED RED  
 FIGURES IN CIRCLES INDICATE THE PARCEL NUMBERS AS SET  
 FORTH IN PARAGRAPH OF THE COMPLAINT

CALC. BY READ  
 CHKD. BY TUPPER

Sht. 2  
 Superior Court Case No. 332650  
 Suit for Condemnation  
 Filed Dec. 21<sup>st</sup> 1931  
 City of Los Angeles, Plaintiff  
 vs  
 The Times Mirror Co. et al., Etc.  
 Interlocutory judgment as to par-  
 cel 1, rendered Jan. 25<sup>th</sup> 1933.  
 Judg. Bk. 8-14-65.  
 This judgment reversed by the  
 Supreme Court of the State of  
 California on Oct. 4, 1933.  
 Interlocutory judgment as to par-  
 cel 1, rendered Jun. 21, 1935; Judg. Bk. 19-19.  
 Final judgment in favor of Plaintiff as  
 to Parcel 1, rendered June 21, 1935.  
 E-6-48, O.R. 135-1735.



A-6208

FIRST ST.-SPRING ST. TO HILL ST.  
 ORDER NO. E.D. 55590