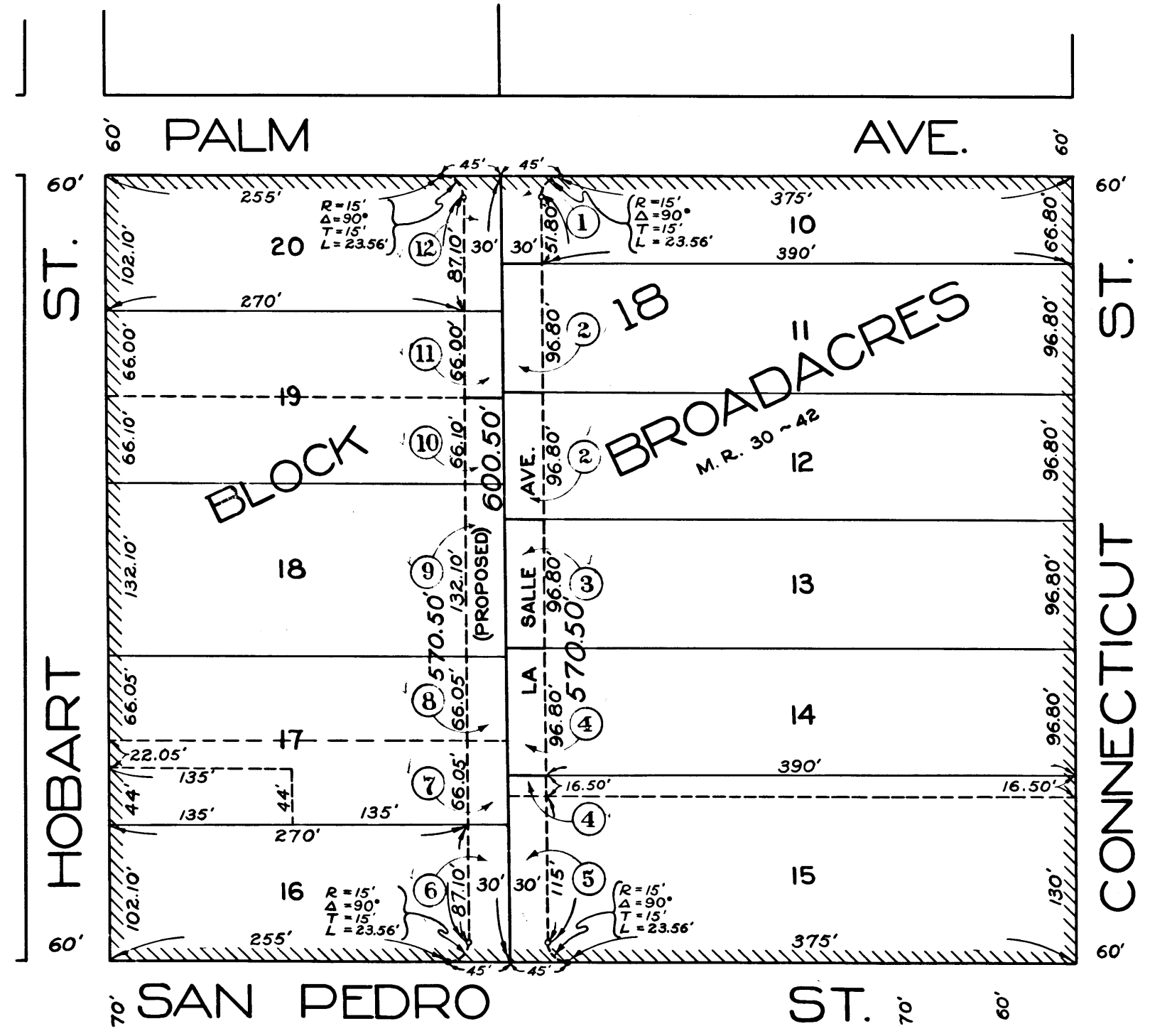


EXHIBIT C



NOTES: 1. Area tinted red shows land to be acquired
 2. Hatching shows boundary of Assessment District.
 3. Circled figures show parcels of land to be acquired and correspond to Title Co. designation of parcels & descriptions.

CITY OF GARDENA OFFICE OF CITY ENGINEER		
MAP SHOWING ASSESSMENT DISTRICT AND LAND TO BE ACQUIRED FOR THE OPENING OF		
LA SALLE AVENUE		
SAN PEDRO ST. TO PALM AVE.		
DATE: May, 1931.	BARNETT & STEELE ENGINEERS	DWG. NO.
BY: H.A.B.	FOR THE CITY OF GARDENA	103
SCALE: 1" = 100'		

Sht. 26
 Superior Court Case No. 331210
 Suit for Condemnation
 Filed Nov. 20, 1931.
 City of Gardena, Plaintiff.
 Vs
 R. H. Oakley et al., Def.
 Interlocutory judgment as per
 map, rendered Nov. 15, 1933.
 Judg. BK. 874-62
 Final judgment in favor of Pltff. as
 per map rendered April 12, 1939
 E: 30-88, O.R. 16491-351

C.F. 1919 -

957

MEMCO
PASADENA, CAL.

10TH

50TH