

EXHIBIT "A"
STREET OPENING DISTRICT NO. 108
OF THE COUNTY OF LOS ANGELES

FOR
THE ACQUIRING, OPENING, WIDENING, AND EXTENDING OF
ANAHEIM TELEGRAPH ROAD, ET AL.

MAP SHOWING PROPERTY TO BE ACQUIRED, IN ACCORDANCE WITH THE PROVISIONS
OF THE COUNTY STREET OPENING ACT OF 1923, APPROVED MAY 11, 1923.
SCALES AS SHOWN. FEBRUARY, 1932.

J. E. ROCKHOLD - COUNTY SURVEYOR

SUBMITTED:

Alfred Jones
ALFRED JONES
CHIEF DEPUTY

APPROVED:

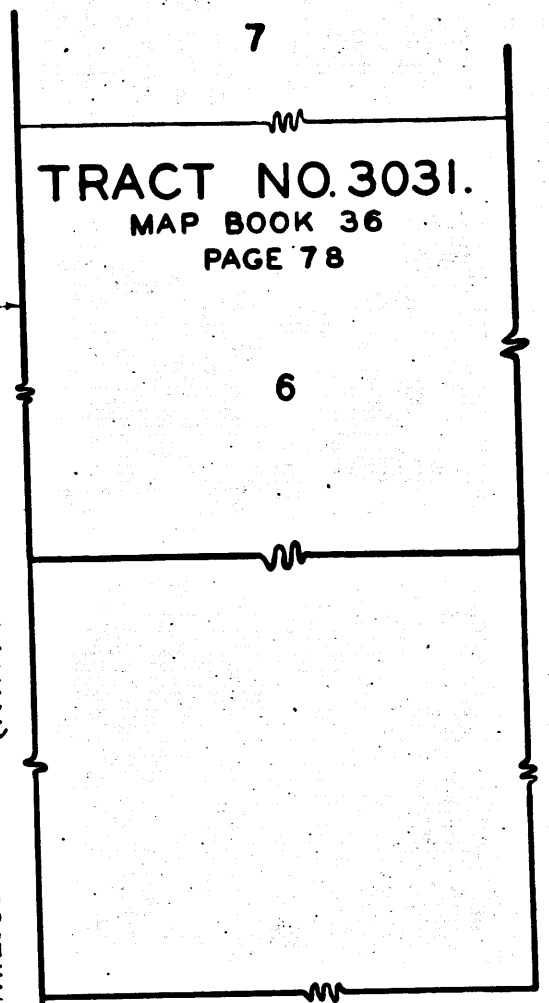
J. E. Rockhold
J. E. ROCKHOLD,
COUNTY SURVEYOR.

APPROVED AS TO FORM:
EVERETT W. MATTOON, COUNTY COUNSEL

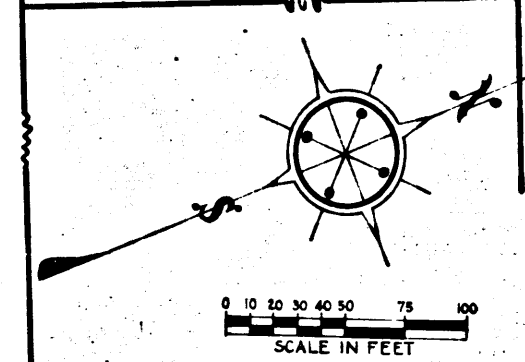
E. B. Peterson
DEPUTY COUNTY COUNSEL

LEGEND

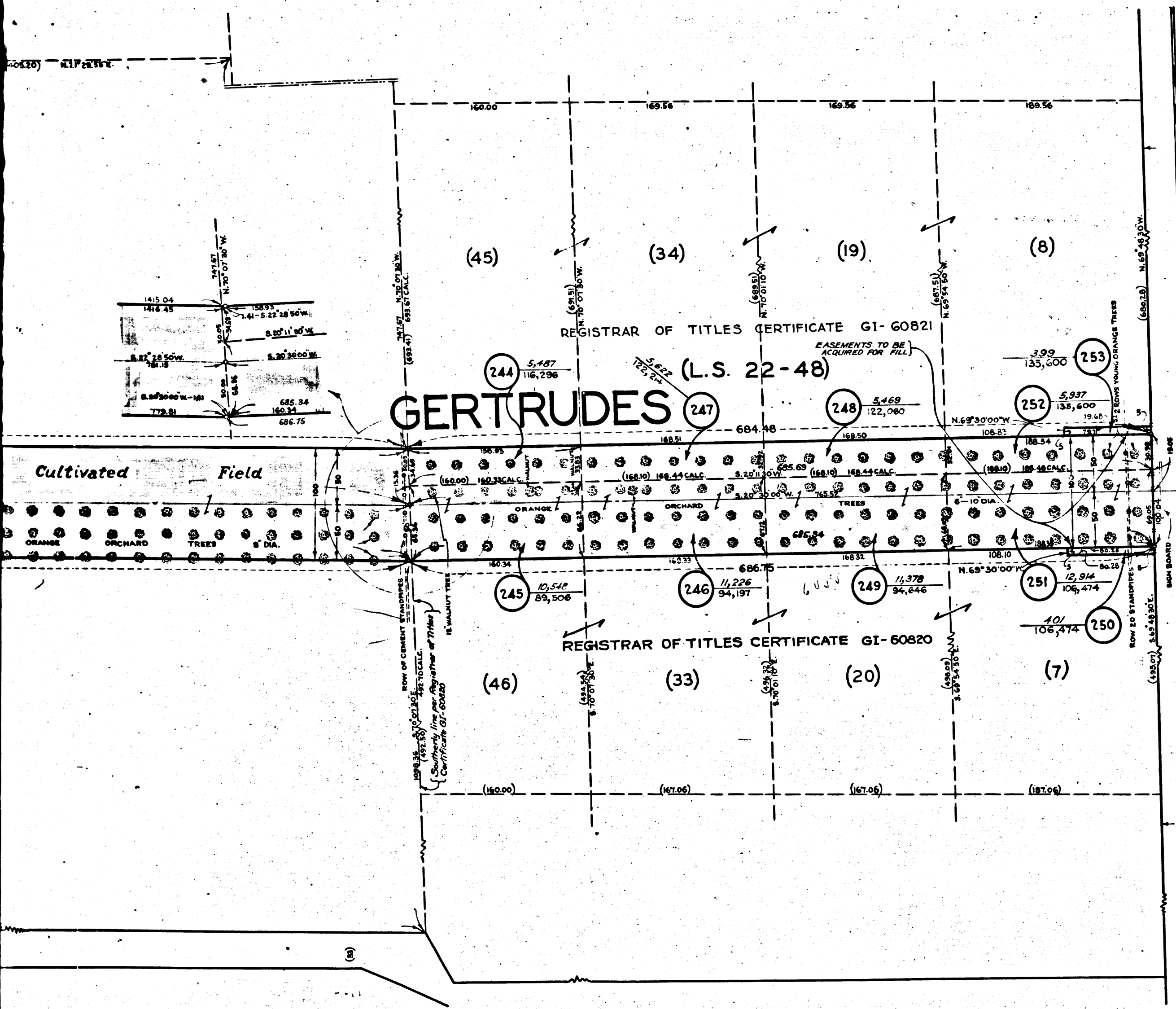
PORTIONS COLORED RED, GREEN, OR BROWN SHOW LOCATION,
GENERAL ROUTE, AND TERMINI OF LAND IN WHICH AN
UNQUALIFIED EASEMENT FOR PUBLIC HIGHWAY
PURPOSES IS SOUGHT TO BE ACQUIRED.
PORTIONS COLORED RED SHOW LAND IN WHICH THE
PUBLIC HAS NO EASEMENT FOR HIGHWAY PURPOSES.
PORTIONS COLORED GREEN SHOW LAND USED
BY THE PUBLIC FOR HIGHWAY PURPOSES.
PORTIONS COLORED BROWN SHOW LAND IN WHICH A PARTIAL
EASEMENT FOR HIGHWAY PURPOSES IS OWNED BY THE PUBLIC.
PORTIONS COLORED YELLOW SHOW LOCATION OF LAND
IN WHICH AN EASEMENT FOR INCIDENTAL PUBLIC
HIGHWAY PURPOSES IS SOUGHT TO BE ACQUIRED.
NUMBERS IN CIRCLES INDICATE PARCELS SOUGHT TO BE CONDEMNED.
THE PARCELS ARE DESCRIBED IN PARAGRAPH VII OF THE COMPLAINT.
FIGURES SHOWN IN PARENTHESES () ARE EITHER RECORD
DISTANCES OR ARE CALCULATED FROM RECORD DISTANCES.
FIGURES SHOWN THUS:
0,000 INDICATE AREA TO BE ACQUIRED, IN SQUARE FEET.
00,000 INDICATE AREA OF HOLDING, INCLUDING AREA
TO BE ACQUIRED, IN SQUARE FEET.



TOPEKA ST.



Sht. 36
Superior Court Case No. 336865
Suit for Condemnation
Filed Mar. 12th 1932
County of Los Angeles, Plt'ff.
Vs
Henry J. Angell et al., Def.
Proceedings abandoned Dec. 11, 1934
and various judgments of dismissal
rendered.



C.F. 1926 2-2

Negatives of this map filed in Blue Print
Dept. as Neg. No. 156 (9 sheets)

SHEET NO. 9 OF 9 SHEETS
S. O. DISTRICT NO. 108

DRAWN BY	J. J. ARCHAMBAULT	DEC. 1932
TRACED BY	J. J. ARCHAMBAULT	DEC. 1932
CHECKED BY	A. L. LOCKIE	DEC. 1932

9775

M.B. 140 29-31

AVENUE

960.62 (962.08) N.22°15'55"E.

405.86 (405.20) N.21°23'55"E.

P. I-156-158
RANCHO

SANTA

GERTRUDES

REGISTRAR OF TITLES CERTIFICATE GI-60821

(L.S. 22-48)

EASEMENTS TO BE ACQUIRED FOR FILL

HE

2676.54

TOPEKA

STREET

REGISTRAR OF TITLES CERTIFICATE GI-60820

2678.26

242 35,849
656,449

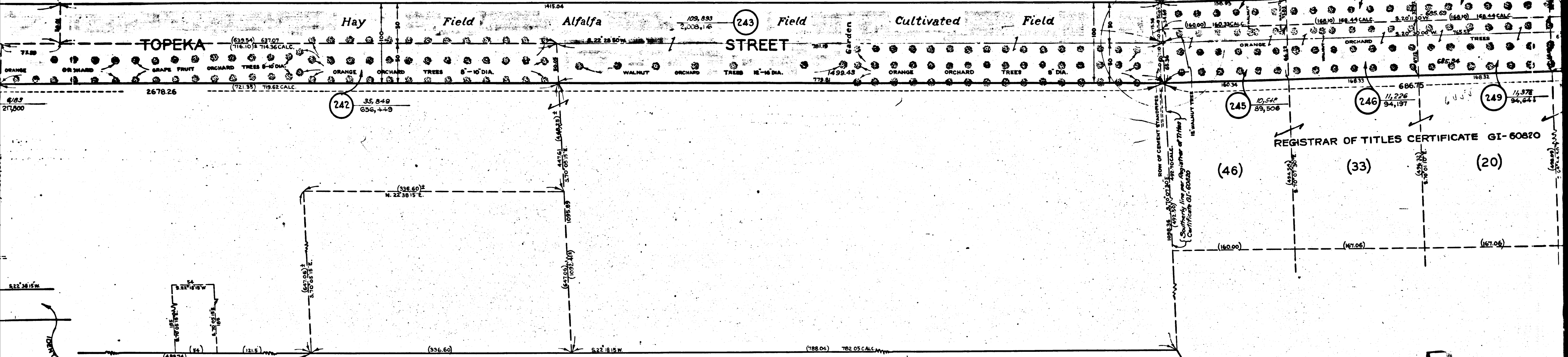
245 10,540
89,506

246 11,226
94,197

249 14,378
94,641

BOULEVARD

C.F. 1926 2-2



TRACT

NO.

9775

M.B. 140 29-31

ARRINGTON

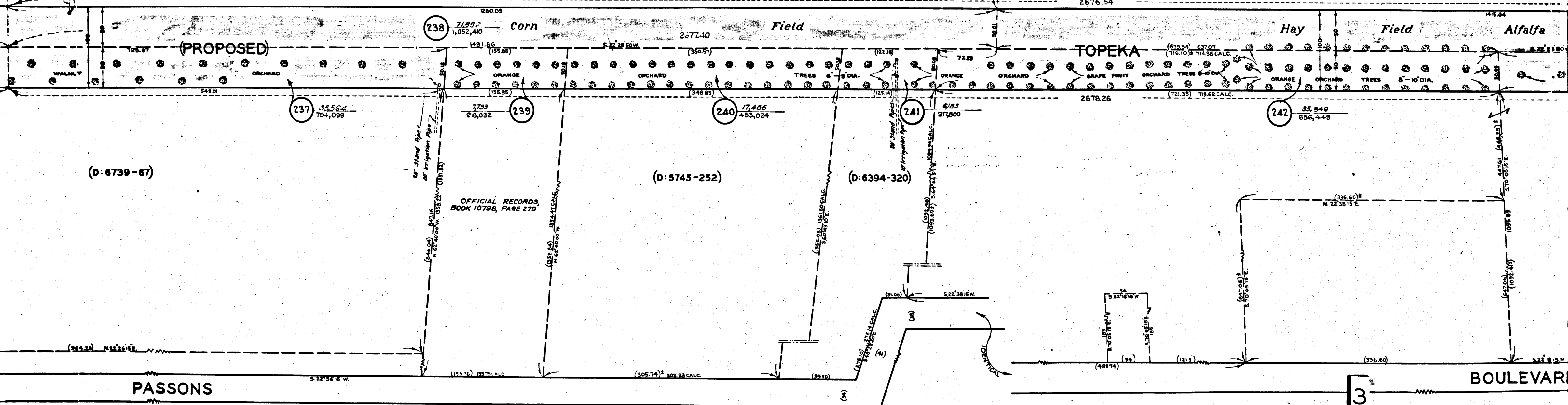
AVENUE

D:OR 4005-132

PART

OF THE

P. I-156-158
RANCHO



(D: 6739-67)

(D: 5745-252)

(D: 6394-320)

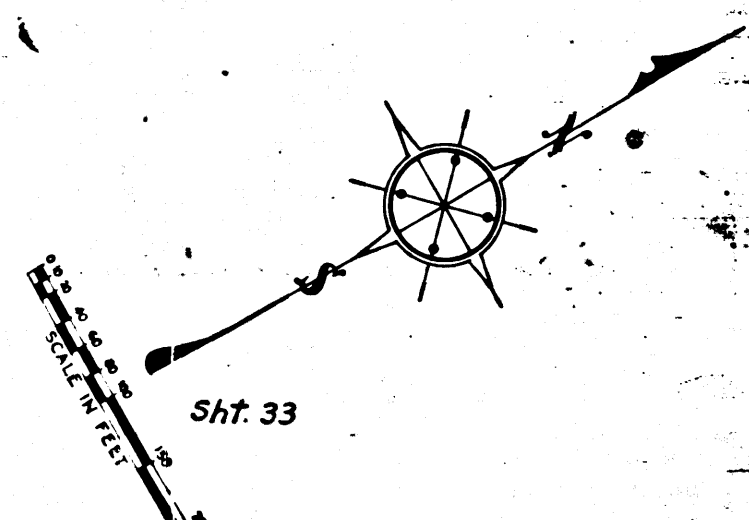
C.F. 1926 2-2

3

PASSONS

BOULEVARD

Sheet No 3



Sht. 33

See Sheet No. 9

SHEET No. 8 OF 8 SHEETS
CONDEMNATION MAP
ANAHAIM TELEGRAPH ROAD
S. O. DISTRICT

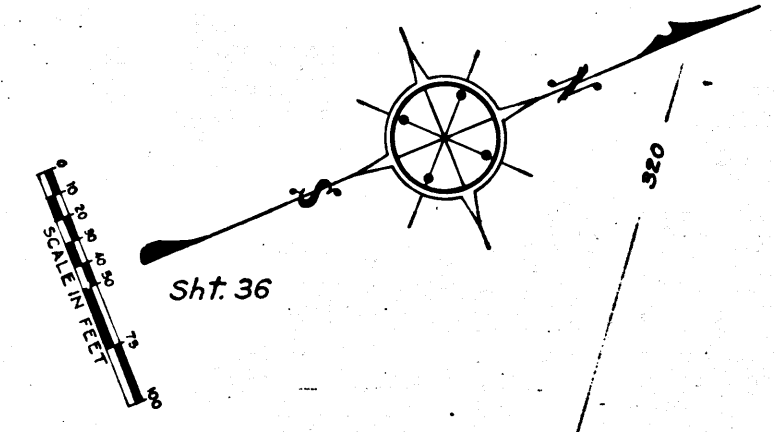
SHEET No. 8 OF 8 SHEETS
CONDEMNATION MAP
ANAHAIM TELEGRAPH ROAD
S. O. DISTRICT

SHEET No. 8 OF 8 SHEETS
S. O. DISTRICT
DRAWN BY ARCHAMBAULT
TRACED BY ARCHAMBAULT
CHECKED BY LOCKIE

SHEET No. 8 OF 8 SHEETS
CONDEMNATION MAP
ANAHAIM TELEGRAPH ROAD
S. O. DISTRICT

SHEET No. 8 OF 8 SHEETS
CONDEMNATION MAP
ANAHAIM TELEGRAPH ROAD
S. O. DISTRICT

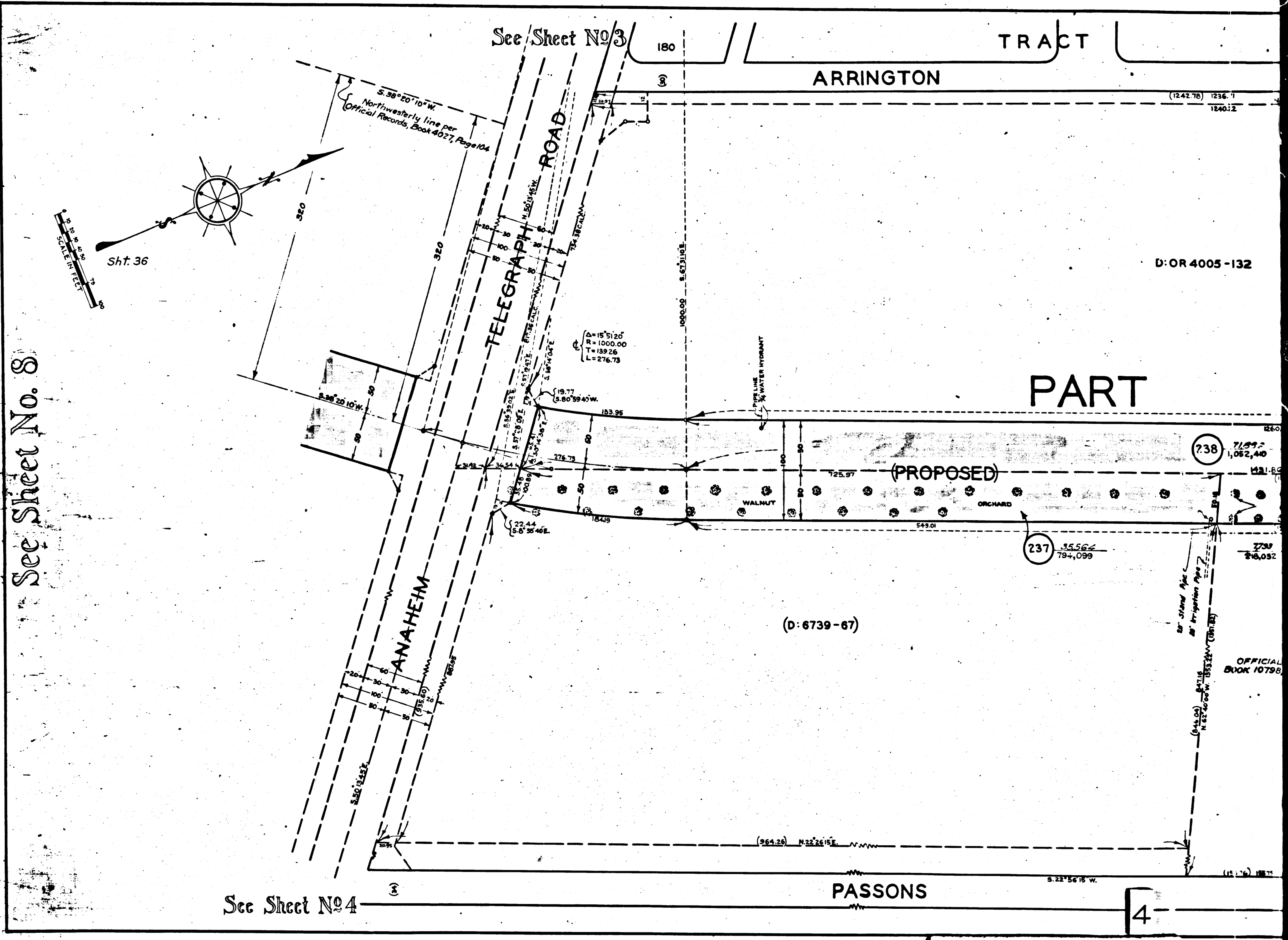
See Sheet No. 8



Sht. 36

See Sheet No 4

See Sheet No 3



TRACT

ARRINGTON

PART

(D: 6739-67)

PASSONS

C.F. 1926 2-2

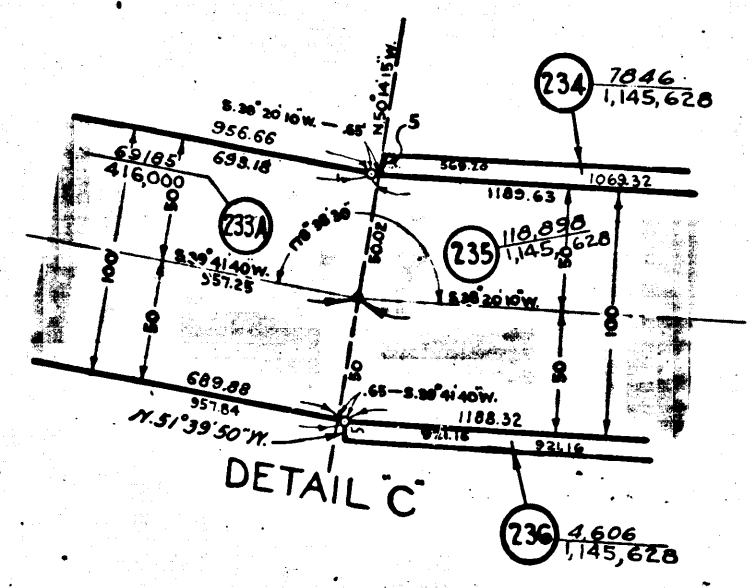
D: OR 4005-132

238 71,997
1,062,440

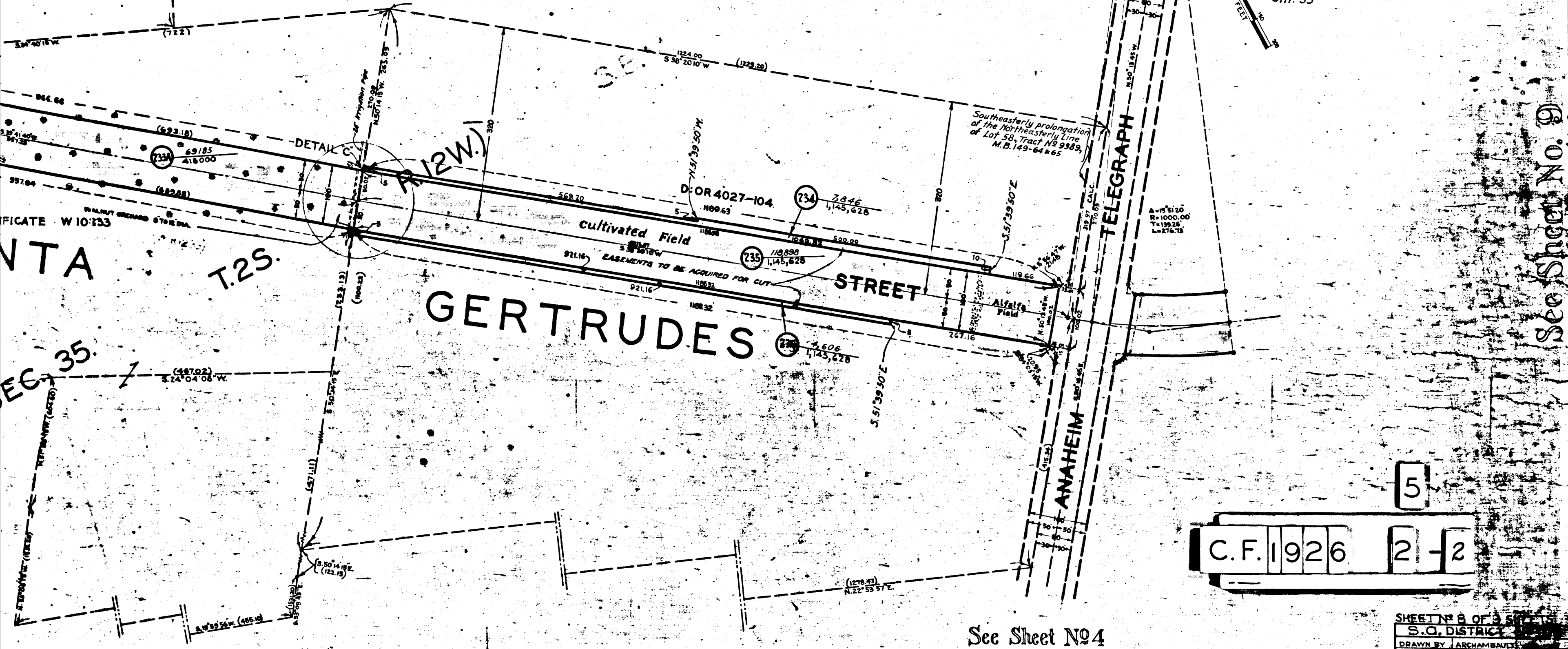
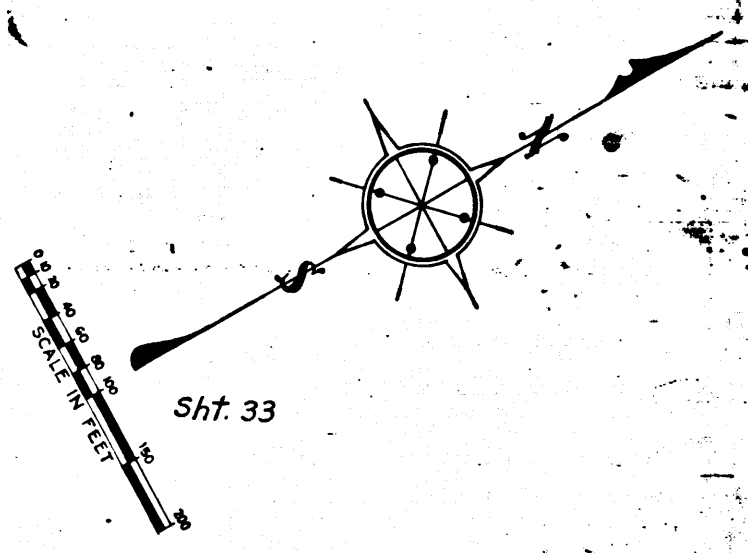
237 35,562
794,099

OFFICIAL BOOK 10798

TRACT NO. 9856
 MAP BOOK 140
 PAGES 24 AND 25



See Sheet No 3



See Sheet No. 9

5
 C.F. 1926 2-2

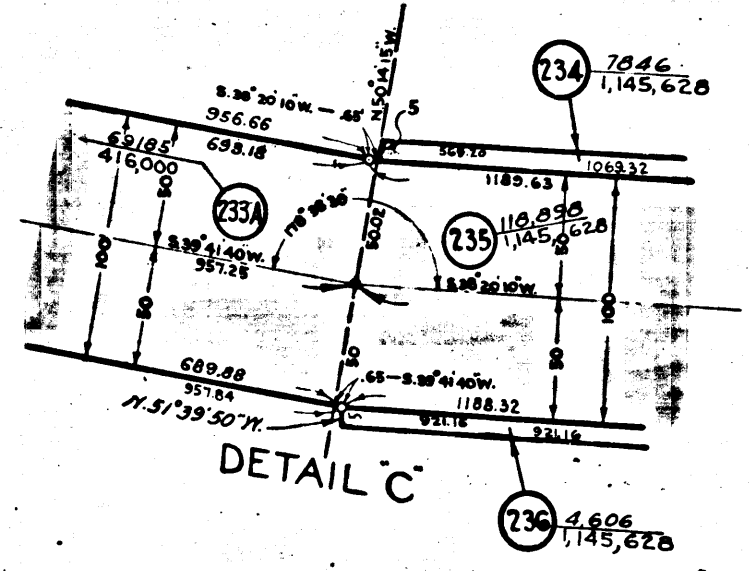
See Sheet No 4

SHEET No. 8 OF 8 SHEETS
 S.O. DISTRICT
 DRAWN BY ARCHAMBAULT
 TRACED BY ARCHAMBAULT
 CHECKED BY LOCKIE

801
 SHEET No. 8 OF 8 SHEETS
 S.O. DISTRICT No. 108
 ANAHEIM TELEGRAPH ROAD
 20' DISTRICT No. 108

See Sheet No. 8

TRACT
NO. 9856
MAP BOOK 140
PAGES 24 AND 25
1 2 3 4



(F B 50945)

R.12W.

OF THE RANCHO

SCHOOL HOUSE ROAD
GALLATIN

LEXINGTON AND GALLATIN ROAD

TOPEKA
REGISTRAR OF TITLES CERTIFICATE W 10233
SANTA
P.1-156-158

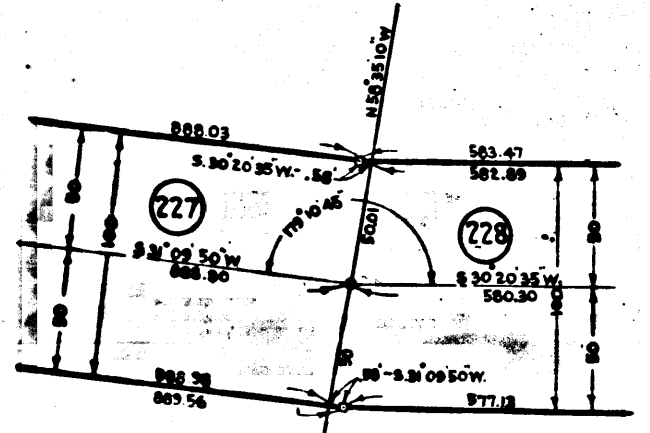
T.2S.

GERTRUDE

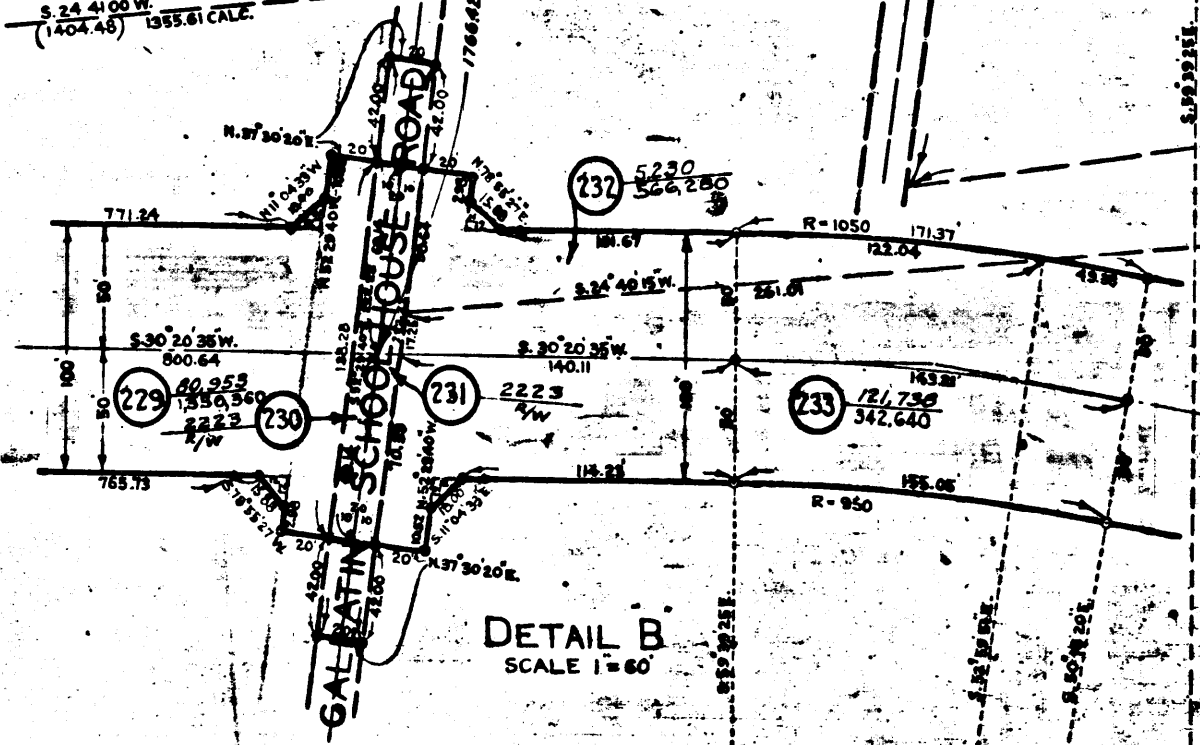
(SEC. 35)

6

C.F. 1926 2-2



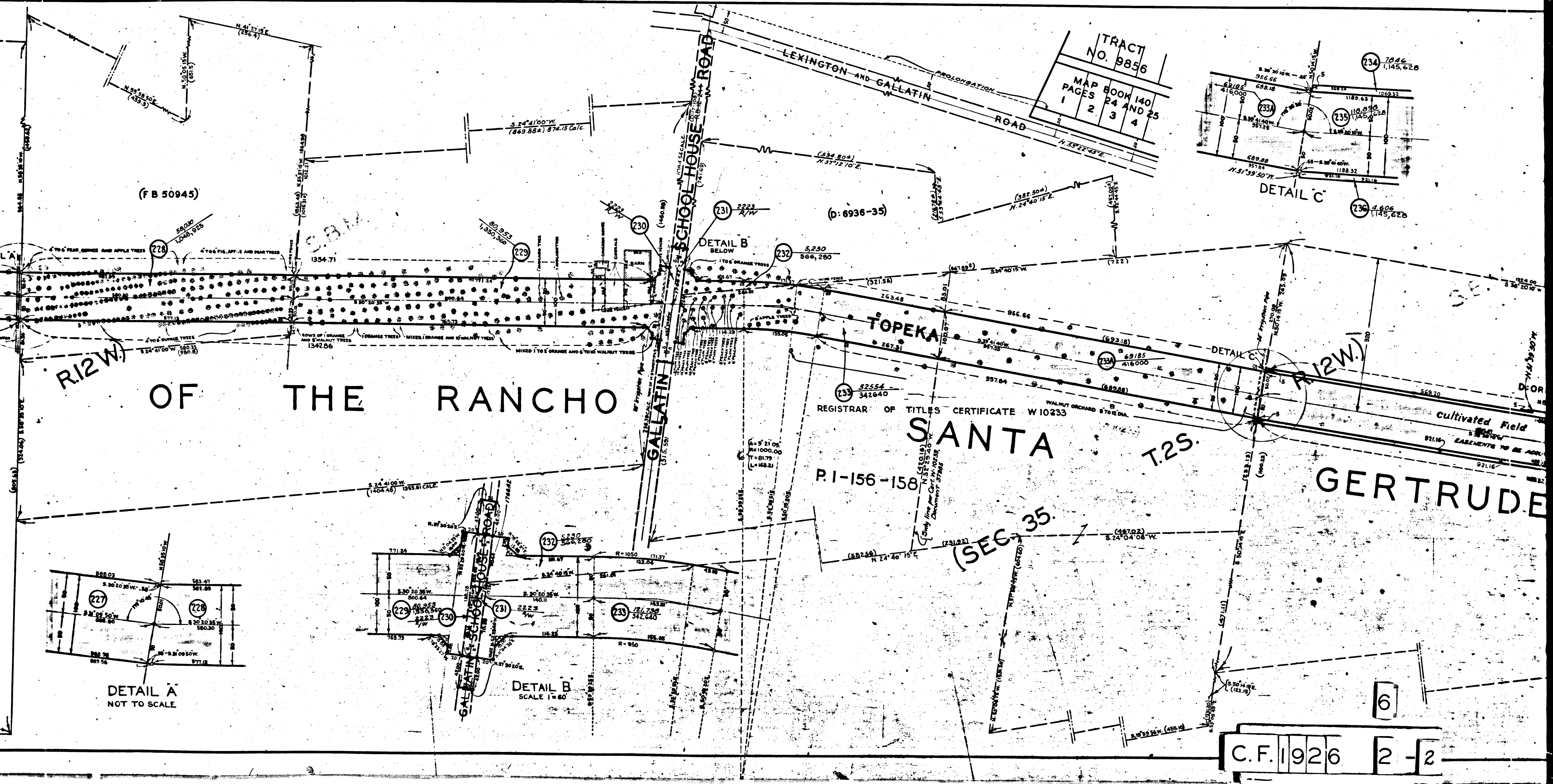
DETAIL A
NOT TO SCALE

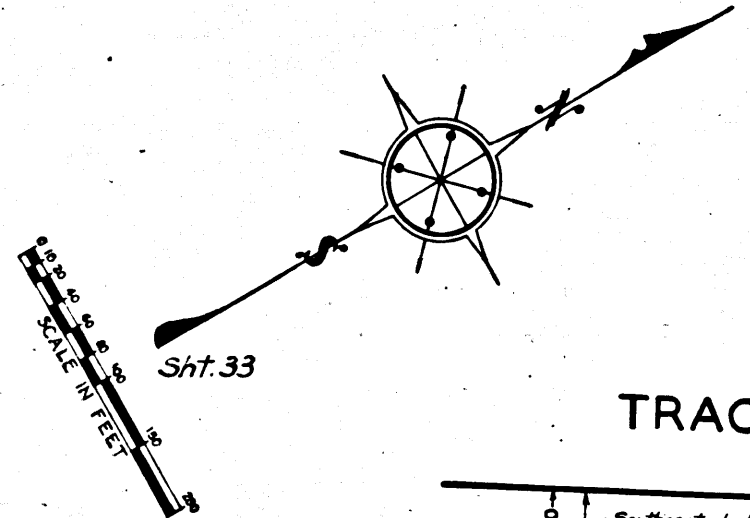


DETAIL B
SCALE 1" = 60'

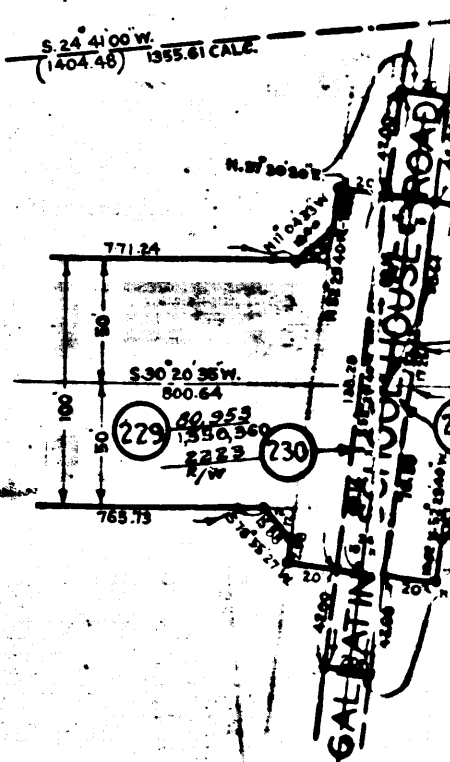
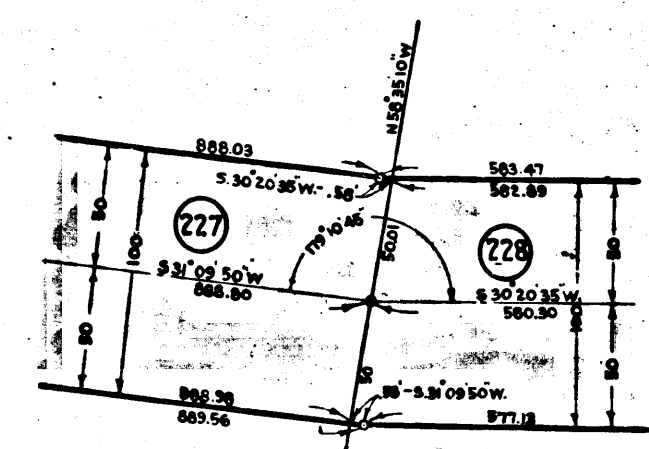
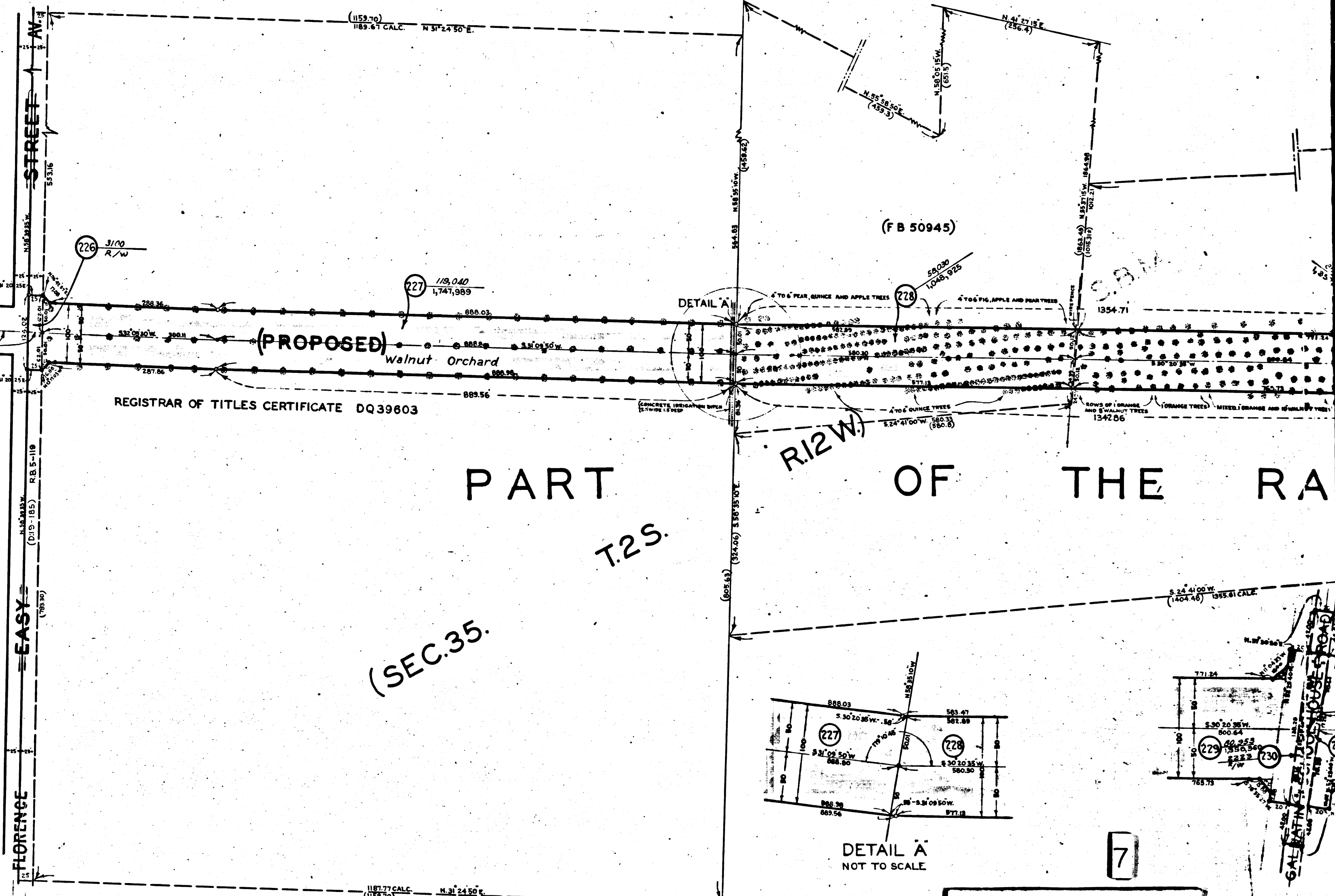
DETAIL B BELOW

DETAIL C



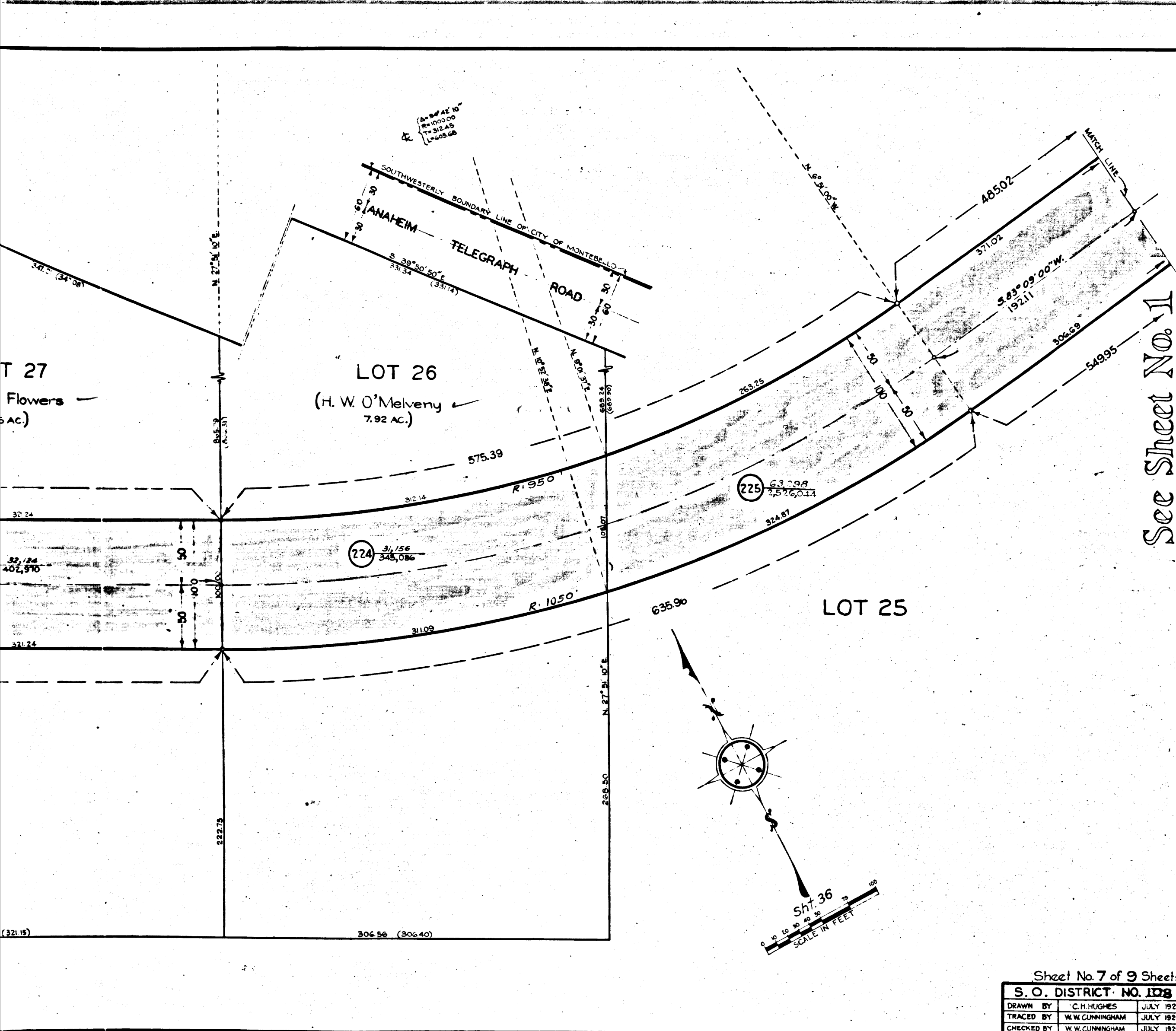


TRACT NO. 6486
M.B. 90-1, 2
Southeasterly line of Lot 3, Tract No. 6486, 118.30, 1-2
CERRITOS AVENUE
5.31 85.30 W.
Prolongation



C.F. 1926 2-2

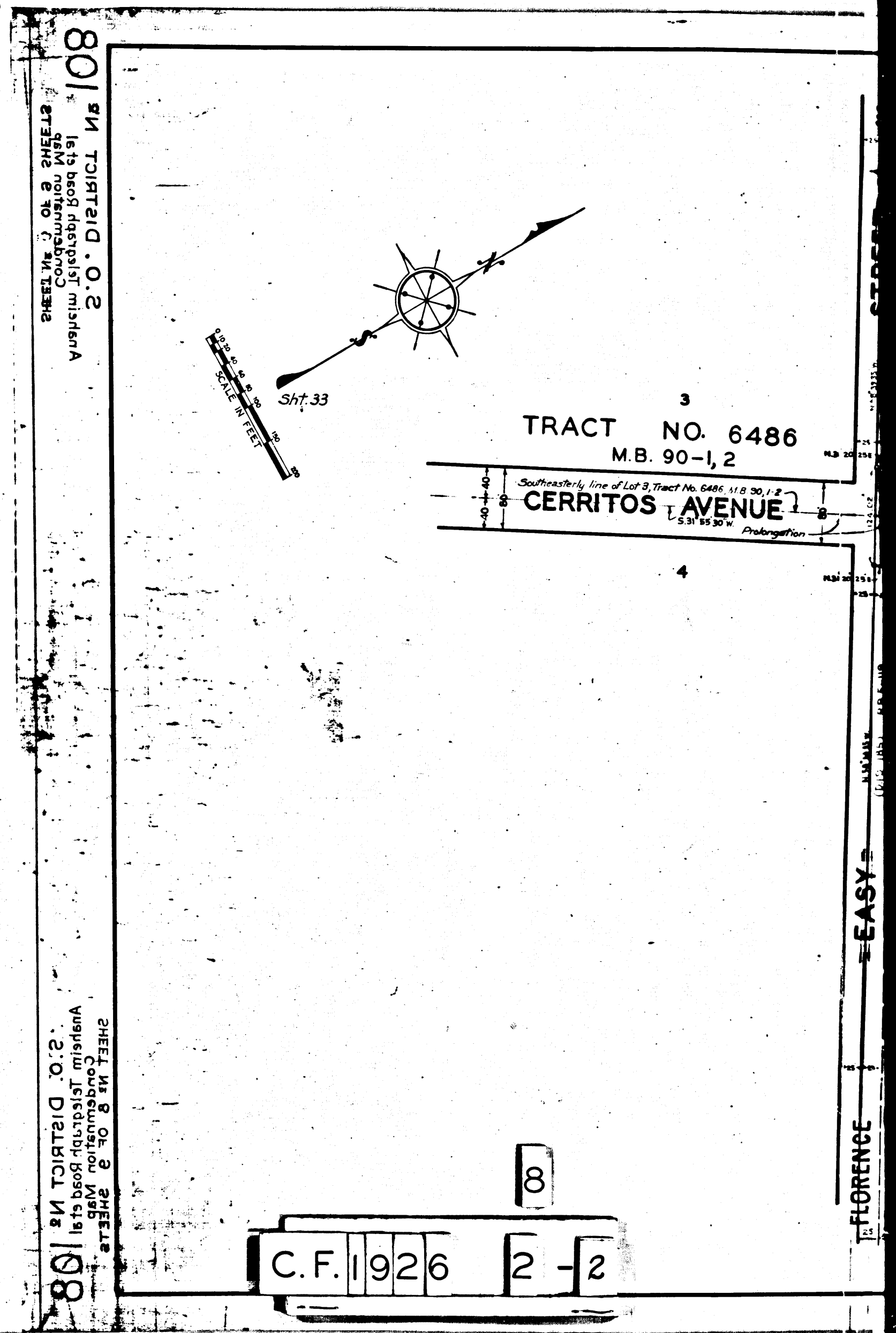
7



Sheet No. 7 of 9 Sheets

S. O. DISTRICT NO. 108		
DRAWN BY	C. H. HUGHES	JULY 1929
TRACED BY	W. W. CUNNINGHAM	JULY 1929
CHECKED BY	W. W. CUNNINGHAM	JULY 1929

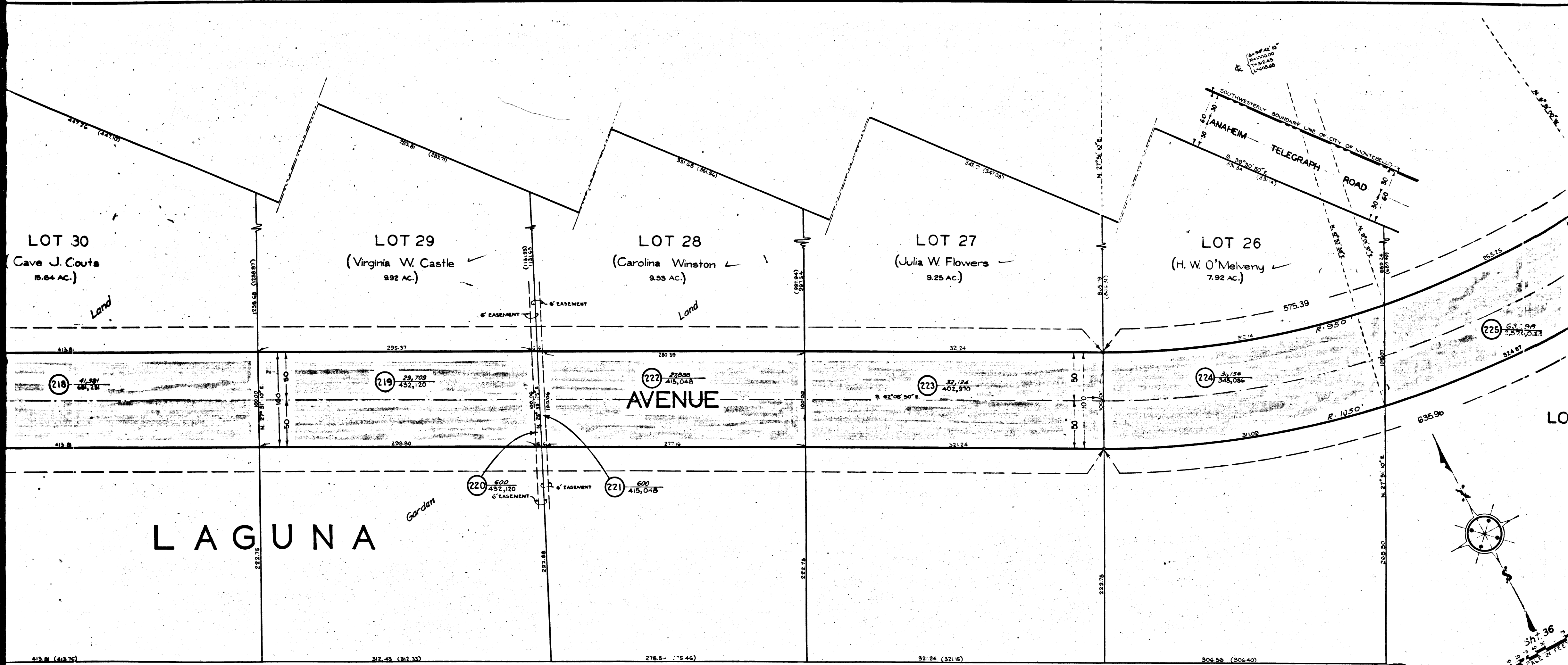
SHEET NO. 7 OF 9 SHEETS
 ANAHEIM TELEGRAPH ROAD ELEVATION
 S. O. DISTRICT NO. 108
 SHEET NO. 1 OF 2 SHEETS
 ANAHEIM TELEGRAPH ROAD ELEVATION
 S. O. DISTRICT NO. 108



C.F. 1926 2-2

SHEET NO. 8 OF 9 SHEETS
 ANAHEIM TELEGRAPH ROAD ELEVATION
 S. O. DISTRICT NO. 108
 SHEET NO. 8 OF 9 SHEETS
 ANAHEIM TELEGRAPH ROAD ELEVATION
 S. O. DISTRICT NO. 108

FLORENCE
 EASY



LOT 30
Cave J. Couts
15.64 AC.

LOT 29
Virginia W. Castle
9.92 AC.

LOT 28
Carolina Winston
9.53 AC.

LOT 27
Julia W. Flowers
9.25 AC.

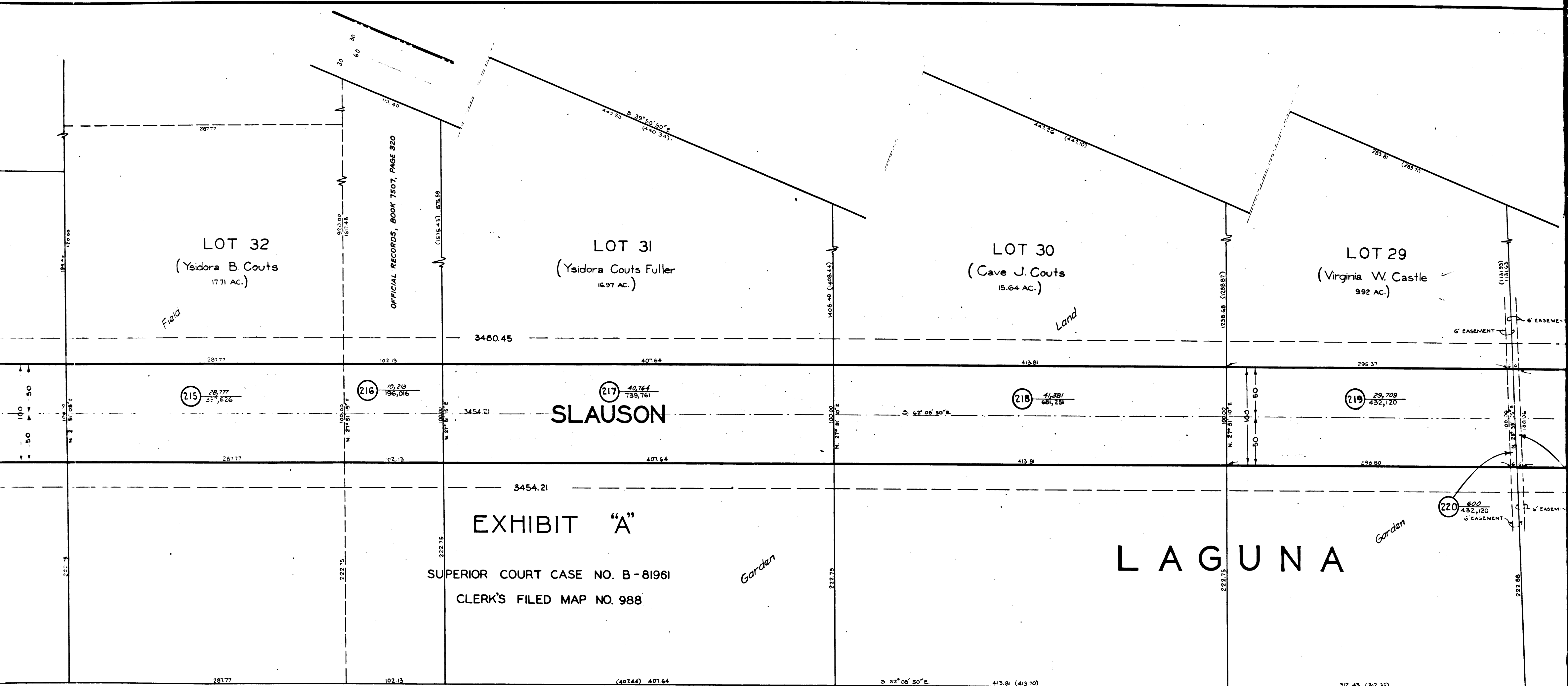
LOT 26
H. W. O'Melveny
7.92 AC.

LAGUNA AVENUE

LAGUNA

C.F. 1926 2-2

Sh. 36
SCALE IN FEET



LOT 32
(Ysidora B. Coutts
17.71 AC.)

LOT 31
(Ysidora Coutts Fuller
16.97 AC.)

LOT 30
(Cave J. Coutts
15.64 AC.)

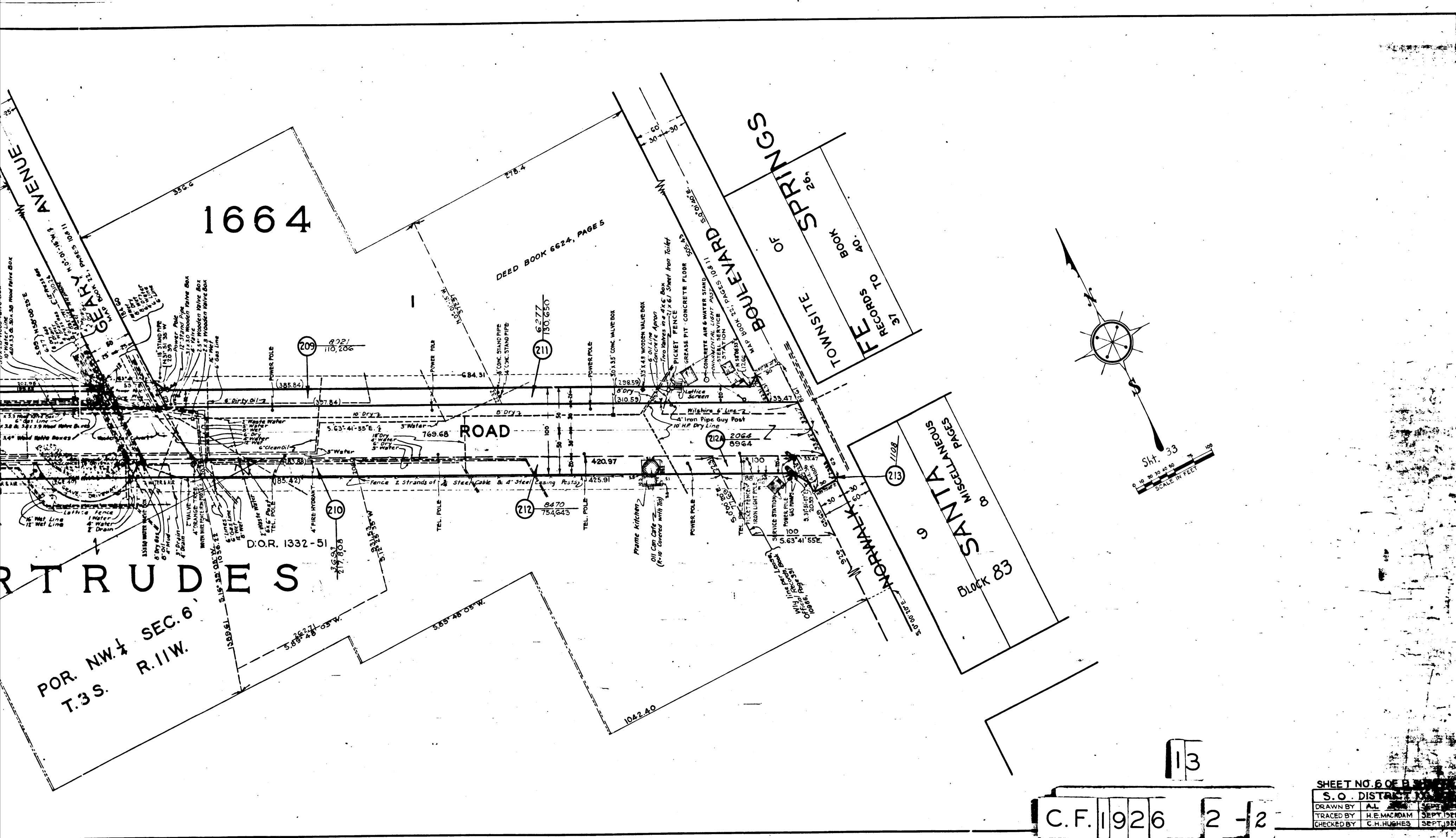
LOT 29
(Virginia W. Castle
9.92 AC.)

SLAUSON
EXHIBIT "A"
SUPERIOR COURT CASE NO. B-81961
CLERK'S FILED MAP NO. 988

LAGUNA

110

C.F. 1926 2-2

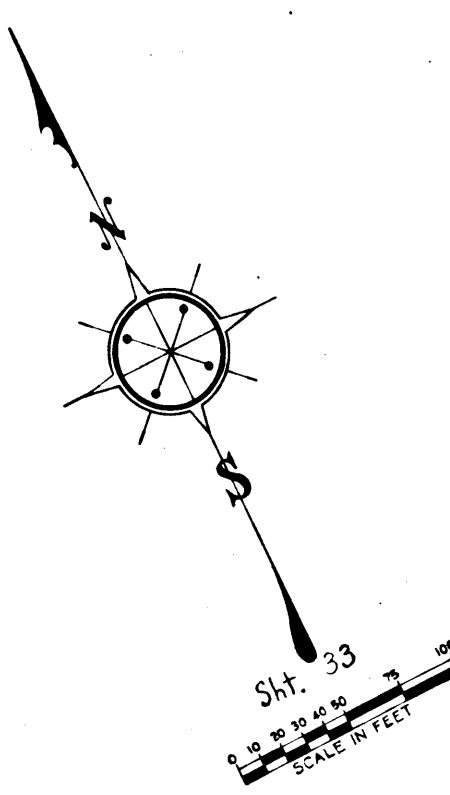


1664

RTRUDES
 POR. NW 1/4 SEC. 6
 T.3S. R.11W.

BOULEVARD SPRINGS
 TOWNSITE
 BOOK 40
 RECORDS TO 37

SANTA ANITA
 Block 83
 8 MISCELLANEOUS
 PAGES



C.F. 1926 2-2

SHEET NO. 6 OF 8

S. O. DISTRICT	
DRAWN BY	AL
TRACED BY	H. E. MACDAM
CHECKED BY	C. H. HUGHES
	SEPT 1928

80
 SHEET NO. 6 OF 8
 S. O. DISTRICT
 RECORDS TO 37

80
 SHEET NO. 6 OF 8
 S. O. DISTRICT
 RECORDS TO 37

13

TRACT

NO.

1664

M. B. 22-10-1

OFFICIAL RECORDS, BOOK 1923, PAGE 244

31

30

16

15

HEIM

TELEGRAPH

ROAD

NCHO

TOR. EC 43395

SECTION 6
T.3S. R.11W.

SANTA

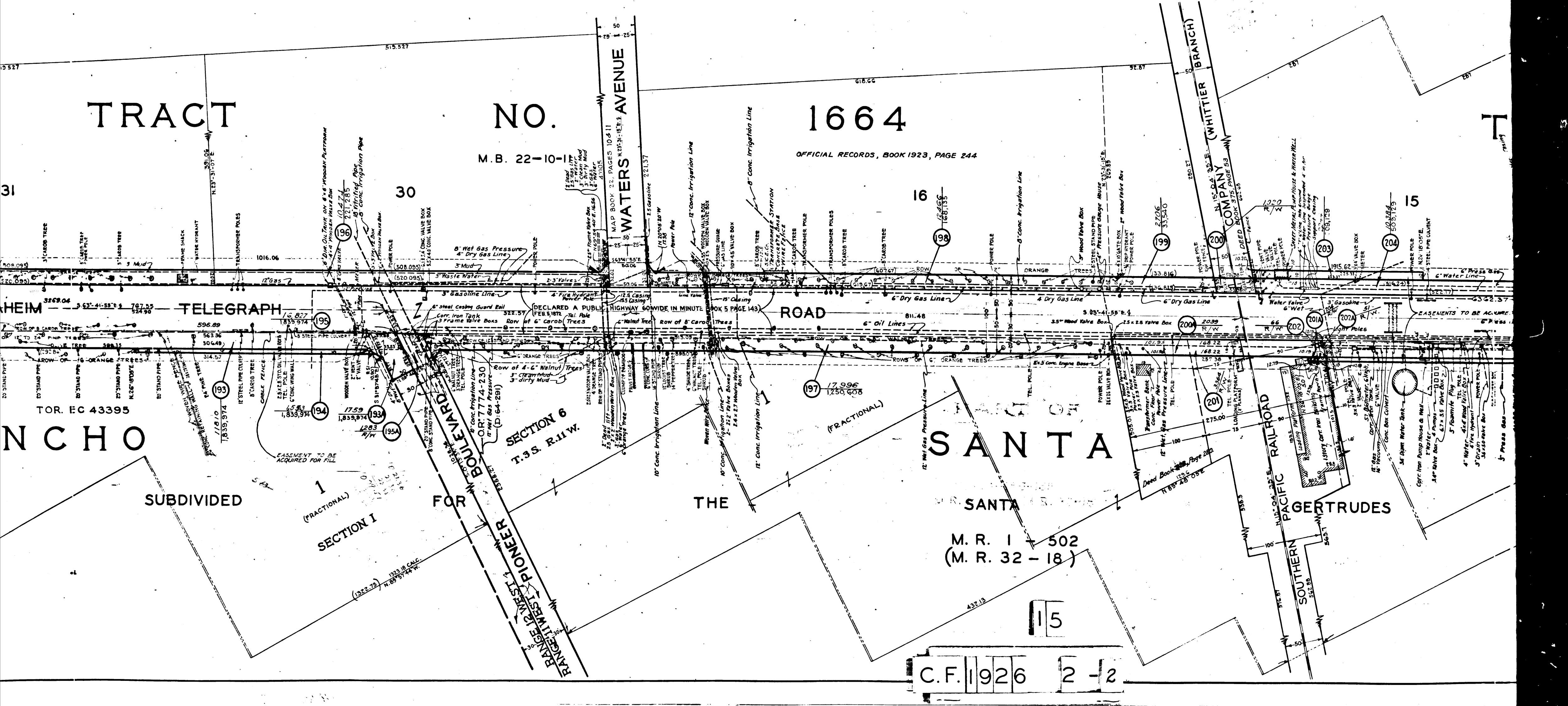
M. R. 1 - 502
(M. R. 32 - 18)

PACIFIC RAILROAD

SOUTHERN

GERTRUDES

C.F. 1926 2-2



SUBDIVIDED
SECTION I
(FRACTIONAL)

FOR
RANGE WEST
PIONEER
BOULEVARD

THE

15

WHITTIER BRANCH

COMPANY

DEED BOOK 175, PAGE 53

DEED BOOK 175, PAGE 53

DEED BOOK 175, PAGE 53

DEED BOOK 175, PAGE 53

DEED BOOK 175, PAGE 53

DEED BOOK 175, PAGE 53

DEED BOOK 175, PAGE 53

DEED BOOK 175, PAGE 53

1016.06

596.69

563.36

306.49

522.37

520.095

520.095

520.095

520.095

520.095

520.095

520.095

520.095

520.095

520.095

520.095

520.095

520.095

596.69

563.36

306.49

522.37

520.095

520.095

520.095

520.095

520.095

520.095

520.095

520.095

520.095

520.095

520.095

520.095

520.095

520.095

1,839,974

1,839,974

1,839,974

1,839,974

1,839,974

1,839,974

1,839,974

1,839,974

1,839,974

1,839,974

1,839,974

1,839,974

1,839,974

1,839,974

1,839,974

1,839,974

1,839,974

1,839,974

1,839,974

1,839,974

1,839,974

1,839,974

1,839,974

1,839,974

1,839,974

1,839,974

1,839,974

1,839,974

1,839,974

1,839,974

1,839,974

1,839,974

1,839,974

1,839,974

1,839,974

1,839,974

1,839,974

1,839,974

1,839,974

1,839,974

1,839,974

1,839,974

1,839,974

1,839,974

1,839,974

1,839,974

1,839,974

1,839,974

1,839,974

1,839,974

1,839,974

1,839,974

1,839,974

1,839,974

1,839,974

1,839,974

1,839,974

1,839,974

1,839,974

1,839,974

1,839,974

1,839,974

1,839,974

1,839,974

1,839,974

1,839,974

1,839,974

1,839,974

1,839,974

1,839,974

1,839,974

1,839,974

1,839,974

1,839,974

1,839,974

1,839,974

1,839,974

1,839,974

1,839,974

1,839,974

1,839,974

1,839,974

1,839,974

1,839,974

1,839,974

1,839,974

1,839,974

1,839,974

1,839,974

1,839,974

1,839,974

1,839,974

1,839,974

1,839,974

1,839,974

1,839,974

1,839,974

1,839,974

1,839,974

1,839,974

1,839,974

1,839,974

1,839,974

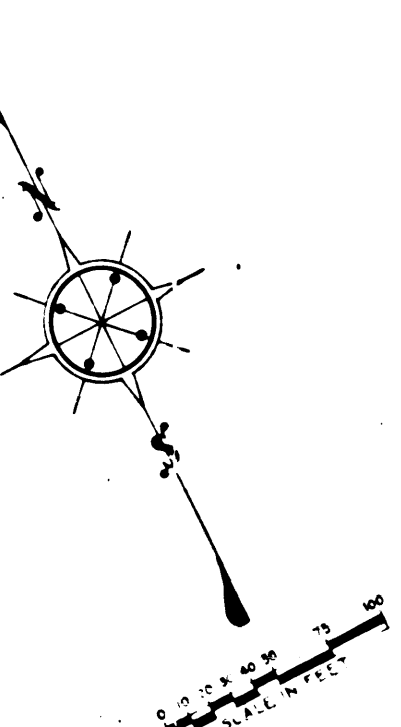
1,839,974

1,839,974

1,839,974

1,839,974

1,839,974



See Sheet No. 6

SHEET No 2 of 9 SHEETS
COUNCILMANSHIP MAP
VANUENUE TELEGRAPH ROAD EAST
S. O. DISTRICT No 108

SHEET No 2 of 9 SHEETS
COUNCILMANSHIP MAP
VANUENUE TELEGRAPH ROAD EAST
S. O. DISTRICT No 108

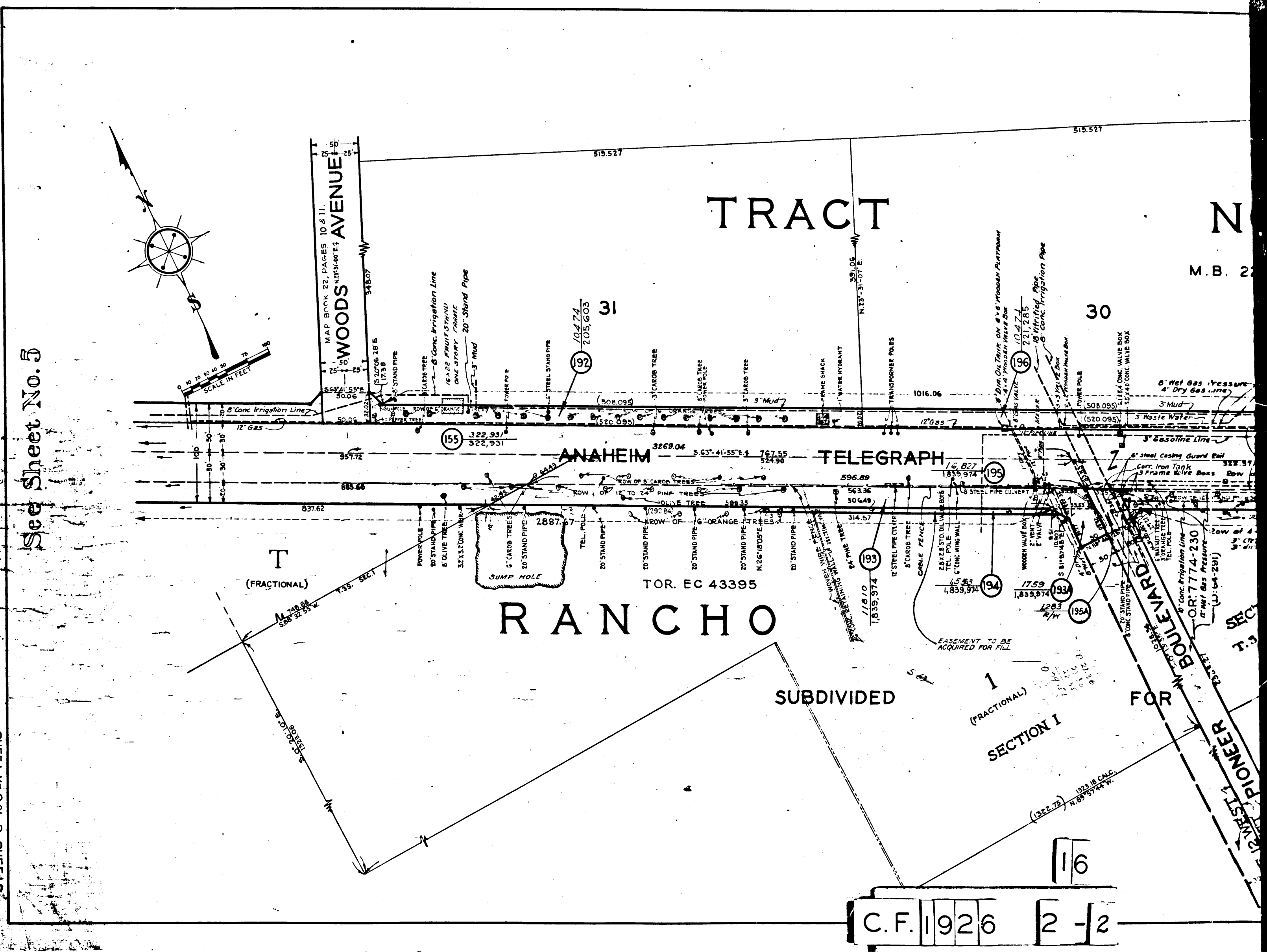
SHEET NO. 5 OF 9 SHEETS
S. O. DISTRICT No 108

DRAWN BY	GREEN	SEPT 1928
TRACED BY	ARCHAMBAULT	FEB 1929
CHECKED BY	CUNNINGHAM	MAR 1929

SHEET No 3 of 9 SHEETS
COUNCILMANSHIP MAP
VANUENUE TELEGRAPH ROAD EAST
S. O. DISTRICT No 108

SHEET No 3 of 9 SHEETS
COUNCILMANSHIP MAP
VANUENUE TELEGRAPH ROAD EAST
S. O. DISTRICT No 108

See Sheet No. 5



C.F. 1926 2-2

16

RUDES

THE
T
(FRACTIONAL)
O
C
I
A
T
I
O
N
A
L
R
O
A
D
(EC-43399)

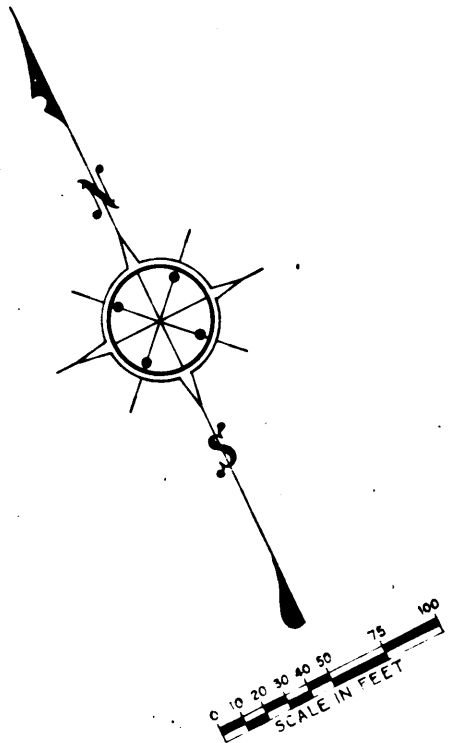
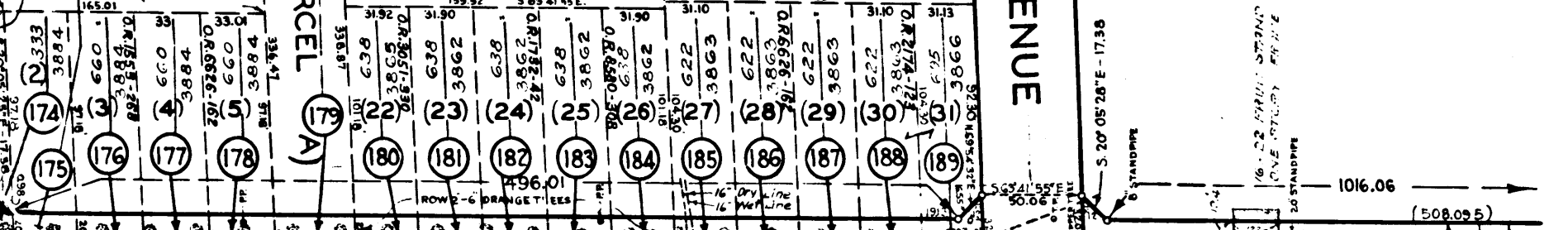
IDENTICAL

RIVERA AND LOS NIÑOS ROAD
N. 23° 31' 05" E. 284.175
2805.31

TRACT NO. 1664
LOT 44 M.B. 22-10, II
LOT 31

WOODS AVENUE
N. 23° 30' 05" E.

(O.R.M.) PARCEL 1390-148



See Sheet No. 6

C.F. 1926 2-12

SHEET NO. 5 OF 9 SHEETS		
S. O. DISTRICT NO. 108		
DRAWN BY	GREEN	SEPT. 1926
TRACED BY	ARCHAMBAULT	FEB. 1927
CHECKED BY	CUNNINGHAM	MAR. 1927

SHEET No. 2 of 3 SHEETS
S. O. DISTRICT No. 108

SHEET No. 5 of 9 SHEETS
S. O. DISTRICT No. 108

SHEET No. 2 of 3 SHEETS
S. O. DISTRICT No. 108

SHEET No. 6 of 9 SHEETS
S. O. DISTRICT No. 108

PART OF THE

(D:7345-24)

RANCHO SANTA GERTRUDES

PATENTS BOOK 1, PAGES 156 TO 158

D:92-288, O.R. 12354-332

(D:5678-79)

RIVERA AND LOS NIÑOS ROAD

TELEGRAPH ROAD (DECLARED A PUBLIC HIGHWAY IN MINUTE BOOK 5 PAGE 143 FEB. 5, 1872 - 60 WIDE)

GERTRUDES LAND ASSOCIATION

CERTIFICATE OF TITLE N-7509

SANTA ORR AND DAY ROAD

M.R. 1-502 (M.R. 32-18)

T.35.

IDENTICAL

18

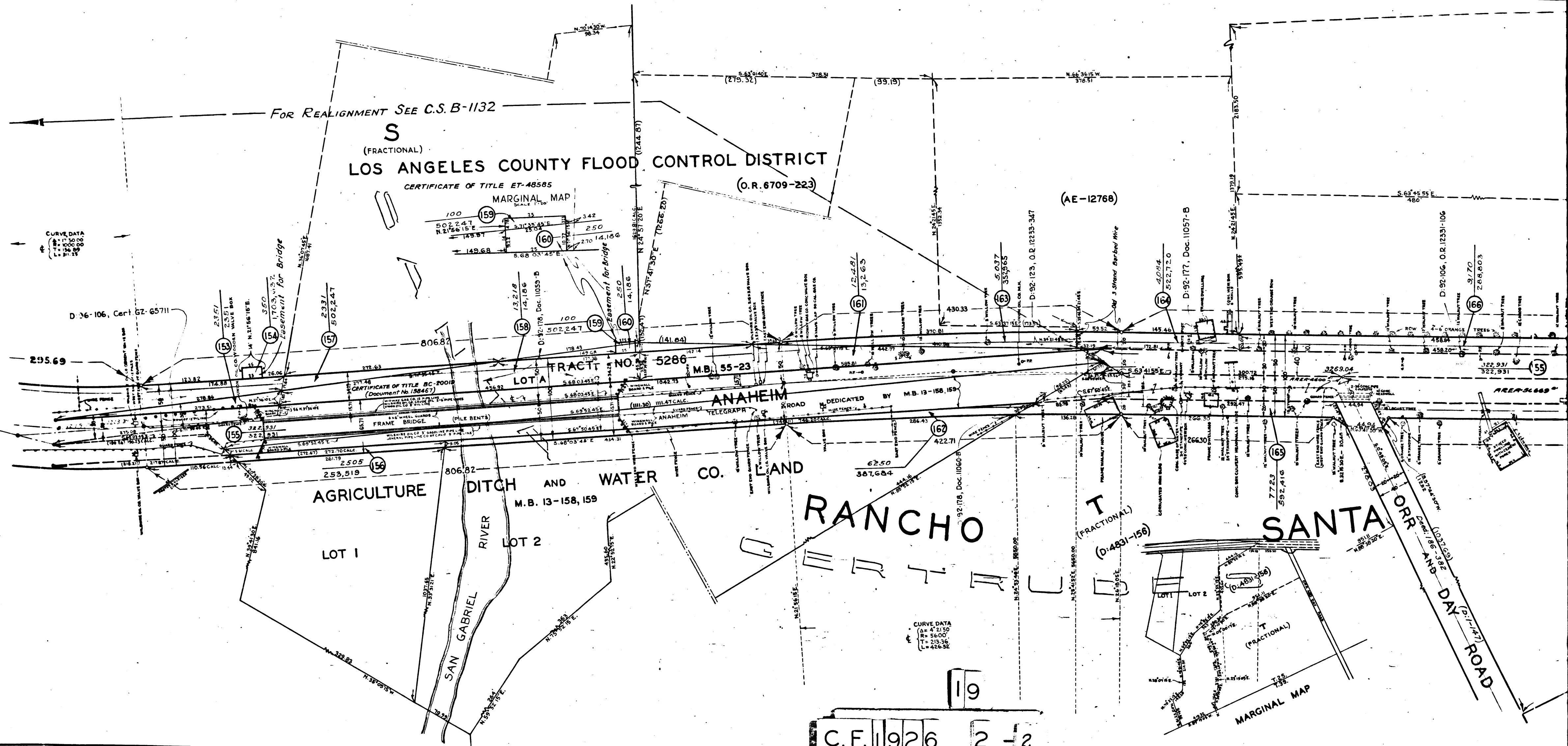
C.F. 1926 2-2

D:92-177, Doc. 11057-B

MARGINAL MAP

O.R.

(EC-43393)



FOR REALIGNMENT SEE C.S. B-1132

S
(FRACTIONAL)
LOS ANGELES COUNTY FLOOD CONTROL DISTRICT
CERTIFICATE OF TITLE ET-48585
MARGINAL MAP
SCALE 1"=100'
(O.R. 6709-223)

CURVE DATA
R=1500.00
L=150.00
P=150.00

AGRICULTURE DITCH AND WATER CO. LAND
M.B. 13-158, 159

ANAHEIM TELEGRAPH ROAD
DEDICATED BY M.B. 13-158, 159

RANCHO GERTH

T
(FRACTIONAL)
(O.4831-156)

SANTA ORR AND DAY ROAD

CURVE DATA
R=5600.00
L=426.92
P=5600.00

19
C.F. 1926 2-2