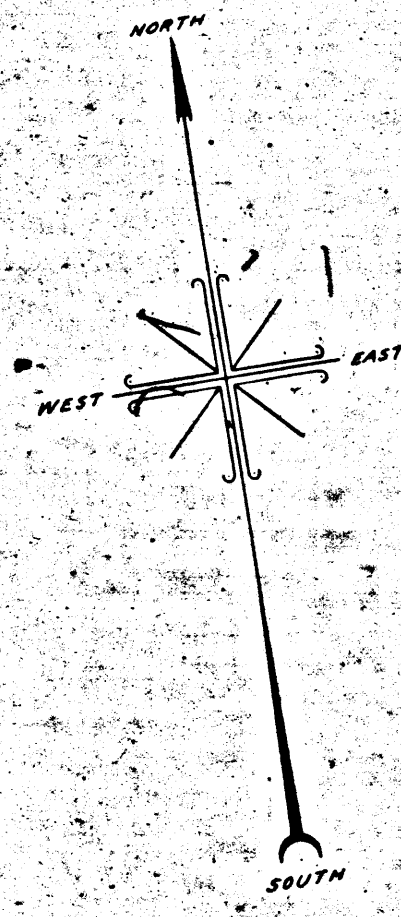
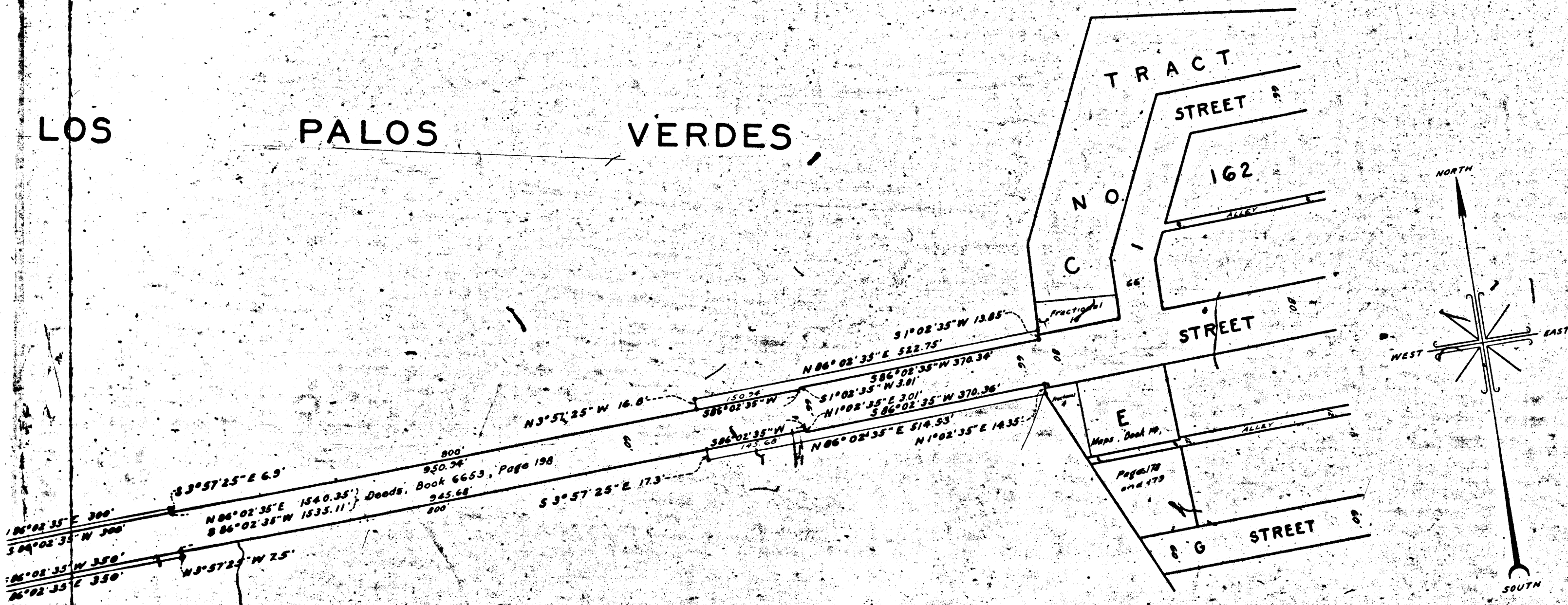


LOS PALOS VERDES

ANAHEIM ST. BET FRIGATE ST. AND GOVERNOR ST.
FILE 5410-31 CHARGE A'H 83858



MAP
 SHOWING EASEMENTS AND RIGHTS-OF-WAY TO BE CONDEMNED
 IN CONNECTION WITH
PUBLIC STREET PURPOSES
 FOR THE
 EXTENSION OF CERTAIN SLOPES OF FILLS DOWNWARD AND OUTWARD
 AND CERTAIN END WALLS WING WALLS CULVERTS AND APPURTENANT
 STRUCTURES NECESSARY TO CONSTRUCT MAINTAIN AND LATERALLY
 AND VERTICALLY SUPPORT A PUBLIC STREET WITHIN THE SIDE LINES OF
ANAHEIM STREET
 BETWEEN
I STREET
 AND
GAFFEY STREET
 IN THE CITY OF LOS ANGELES CALIFORNIA
 IN ACCORDANCE WITH ORDINANCE NO 70848
 J. J. JESSUP, CITY ENGINEER / MARCH 1932
 SCALE 1 INCH = 100 FEET

NOTE: EASEMENTS AND RIGHTS-OF-WAY TO BE CONDEMNED SHOWN COLORED RED.

Superior Court Case No. 338112
 Suit for Condemnation
 Filed Apr. 15th 1932
 City of Los Angeles, Plff.
 vs
 Palos Verdes Corp., et al., Def.
 Order authorizing Plaintiff to
 take immediate possession
 rendered April 22nd 1932.
 Interlocutory judgment as per
 map, rendered Jan. 27th 1933.
 Judg. Bk. 842-199.

Index 28

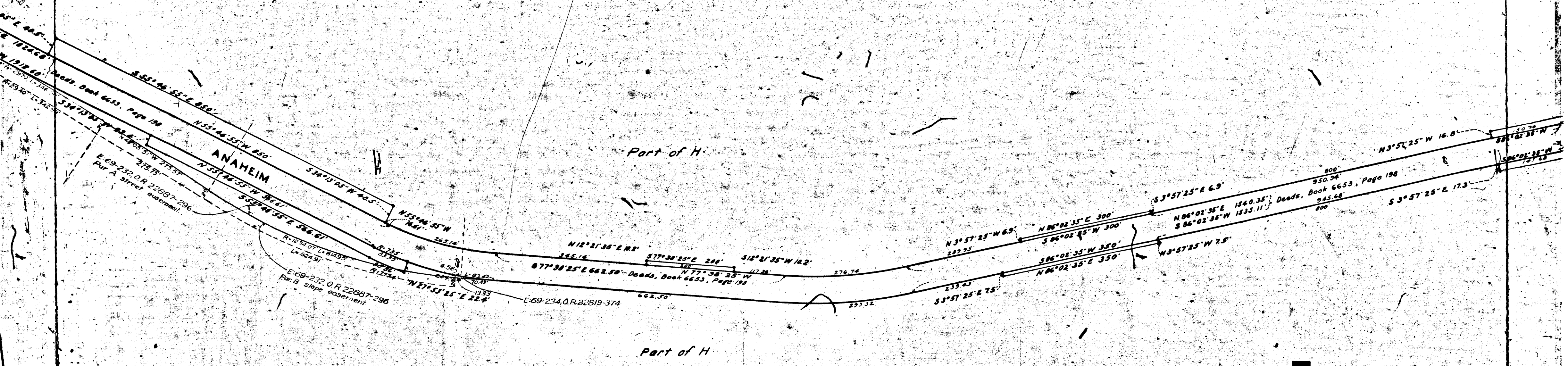
A-6229

Final judgment in favor of Plff.
 as per map, rendered April 22nd 1933.
 U.S. COUR. 12124-165.

0550-A

0550-A

PARTITION OF THE RANCHO LOS PALOS VERDES



District Court Case No. 2373



PARTITION OF THE RANCHO LOS

0550-A

0550-A

RIGHT-OF-WAY

E 78-180, O.R. 26429-102

GAFFEY

OF THE PACIFIC ELECTRIC RAILWAY COMPANY
STREET

ANAHEIM

Part of H

Part of H

District Court Case No. 2373

3

