

INDEX 7

Superior Court Case No. 336671
 Suit for Condemnation
 Filed Mar. 9th 1932
 County of Los Angeles, Pltff.
 Vs
 Marie Ambrose et al, Def.
 Proceedings abandoned Dec. 11, 1933.

EXHIBIT "A"
STREET OPENING DISTRICT NO. 118
OF THE COUNTY OF LOS ANGELES
 FOR
THE OPENING, WIDENING, AND EXTENDING OF
FIRESTONE BOULEVARD

MAP SHOWING PROPERTY TO BE ACQUIRED, IN ACCORDANCE WITH THE PROVISIONS
 OF THE COUNTY STREET OPENING ACT OF 1923, APPROVED MAY 11, 1923.
 SCALE: AS SHOWN FEBRUARY, 1932.

J. E. ROCKHOLD - COUNTY SURVEYOR

SUBMITTED:

Alfred Jones
 ALFRED JONES,
 CHIEF DEPUTY.

APPROVED:

J. E. Rockhold
 J. E. ROCKHOLD,
 COUNTY SURVEYOR.

APPROVED AS TO FORM:
 EVERETT W. MATTOON, COUNTY COUNSEL

BY *J. B. McKesson*
 DEPUTY COUNTY COUNSEL

LEGEND

PORTIONS COLORED RED SHOW LOCATION, GENERAL ROUTE,
 AND TERMINI OF LAND IN WHICH AN UNQUALIFIED EASEMENT
 FOR PUBLIC HIGHWAY PURPOSES IS SOUGHT TO BE ACQUIRED.
 PORTIONS COLORED RED SHOW LAND IN WHICH THE
 PUBLIC HAS NO EASEMENT FOR HIGHWAY PURPOSES.
 NUMBERS IN CIRCLES INDICATE PARCELS SOUGHT TO BE CONDEMNED.
 THE PARCELS ARE DESCRIBED IN PARAGRAPH VII OF THE COMPLAINT.
 FIGURES SHOWN IN PARENTHESES () ARE EITHER RECORD
 DISTANCES OR ARE CALCULATED FROM RECORD DISTANCES.

Negative of this map filed in Blue
 Print Dept. as Neg. No. 159 (3 Sheets)

S. O. DISTRICT No 118	
SHEET No 3 OF 3 SHEETS	
DRAWN BY	V. A. KAUFFMAN APR 15 31
TRACED BY	V. A. KAUFFMAN APR 15 31
CHECKED BY	C. H. HUGHES APR 15 31
REVISED	
C. S. INDEX MAP NO. 6	

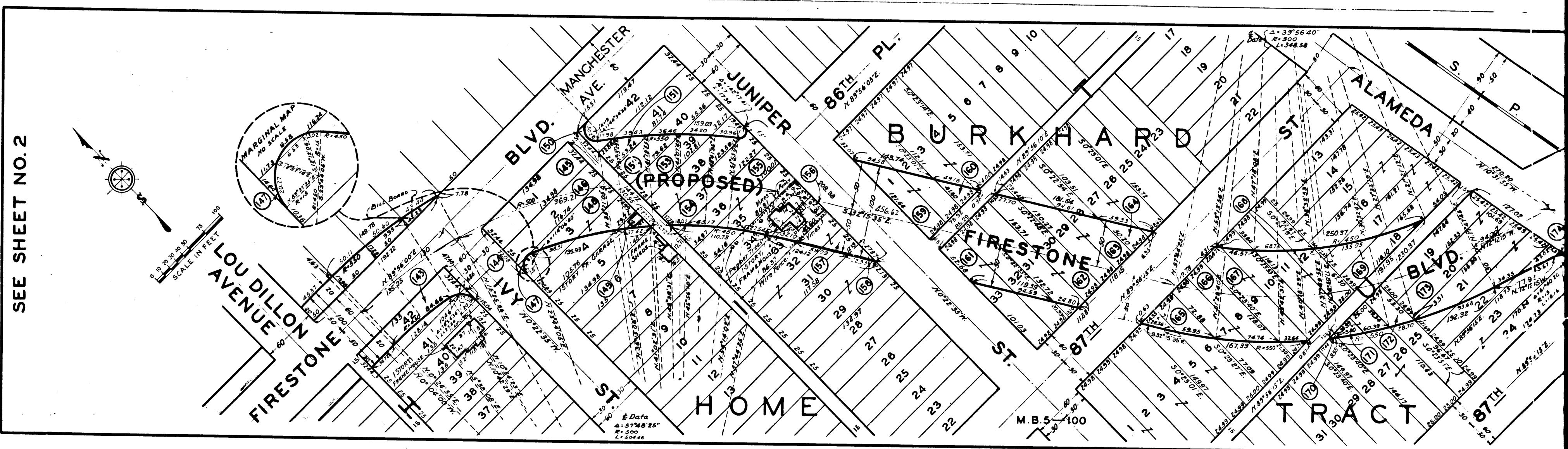
SHEET 3 OF 3 SHEETS
 DISTRICT NO. 118
 DISTRICT NO. 118
 DISTRICT NO. 118
 DISTRICT NO. 118

11

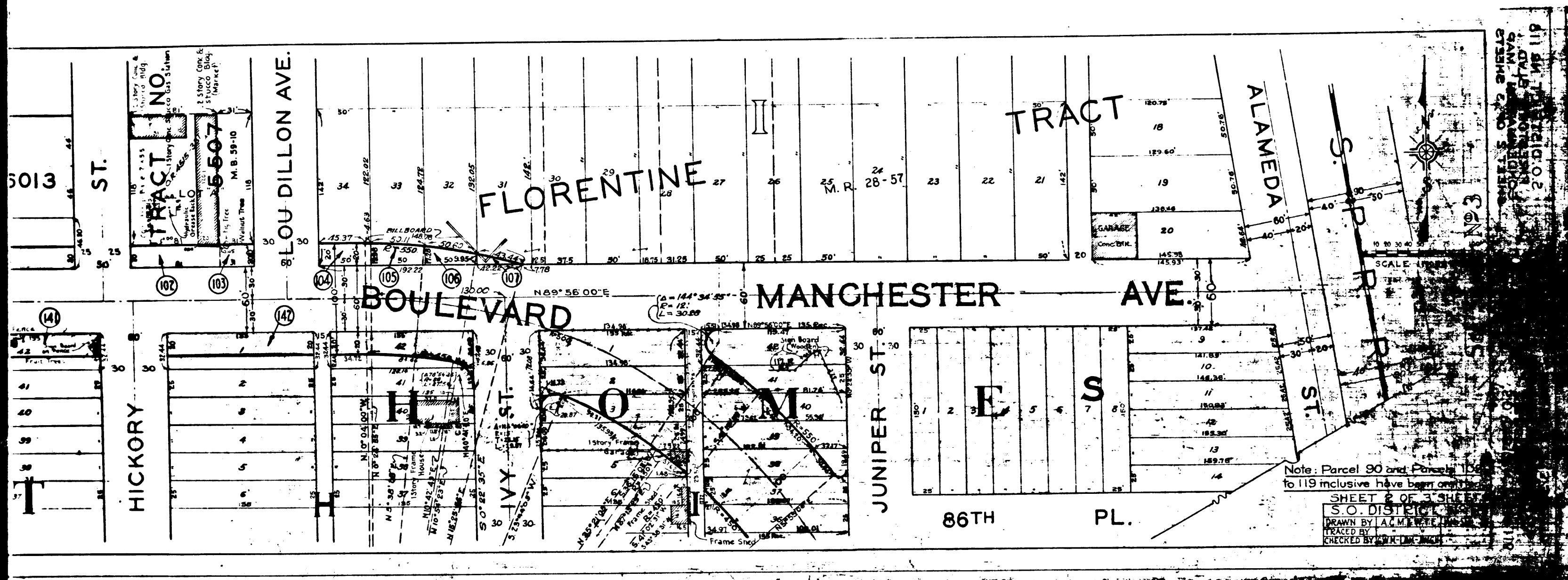
C.F. 1929 -

193
SHEETS OF 2 SHEETS
CONDENATION BLVD
FIRESTONE BLVD
20 DISTRICT No 118

SEE SHEET NO. 2
SHEET 3 OF 2 SHEETS
CONDENATION BLVD
FIRESTONE BLVD
20 DISTRICT No 118

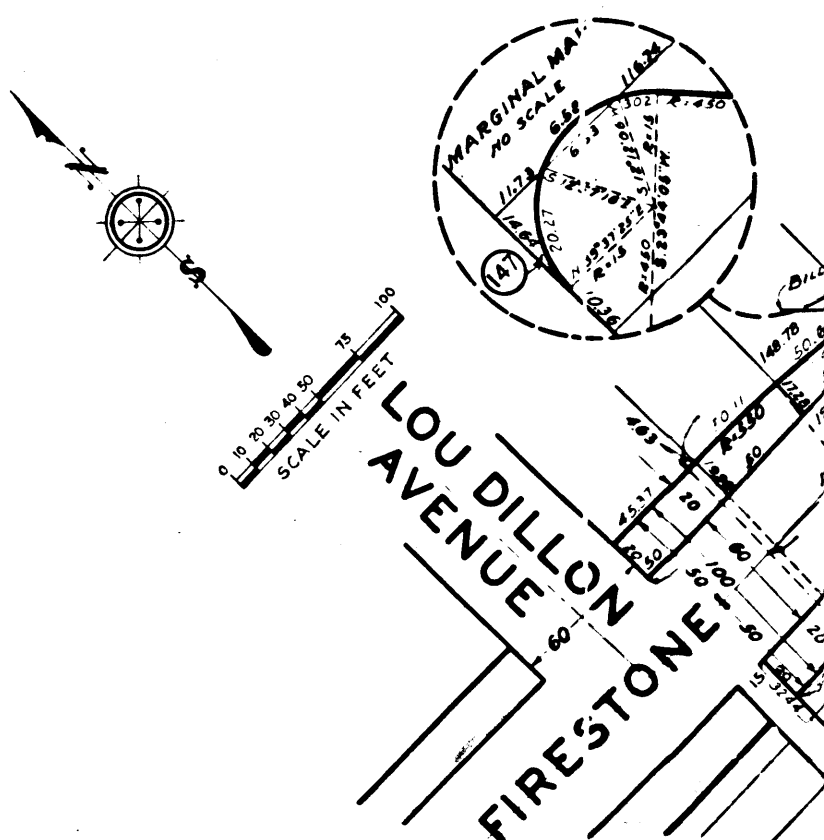


2
C.F. 1929 -



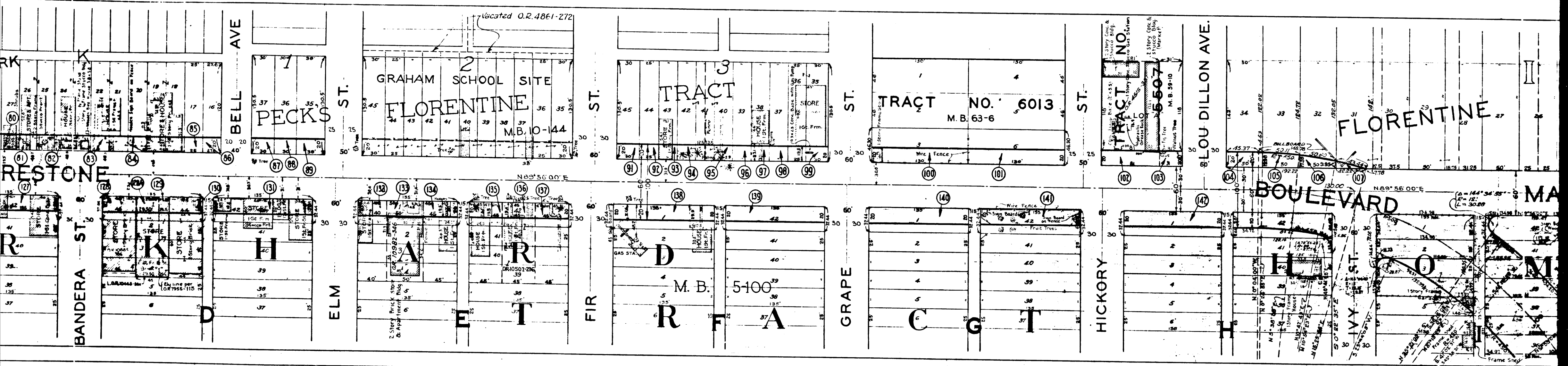
SHEET 2 OF 3 SHEETS
 COMMISSION BLDG
 FIRESTONE BLDG
 20 DISTRICT No 119

SEE SHEET NO. 2



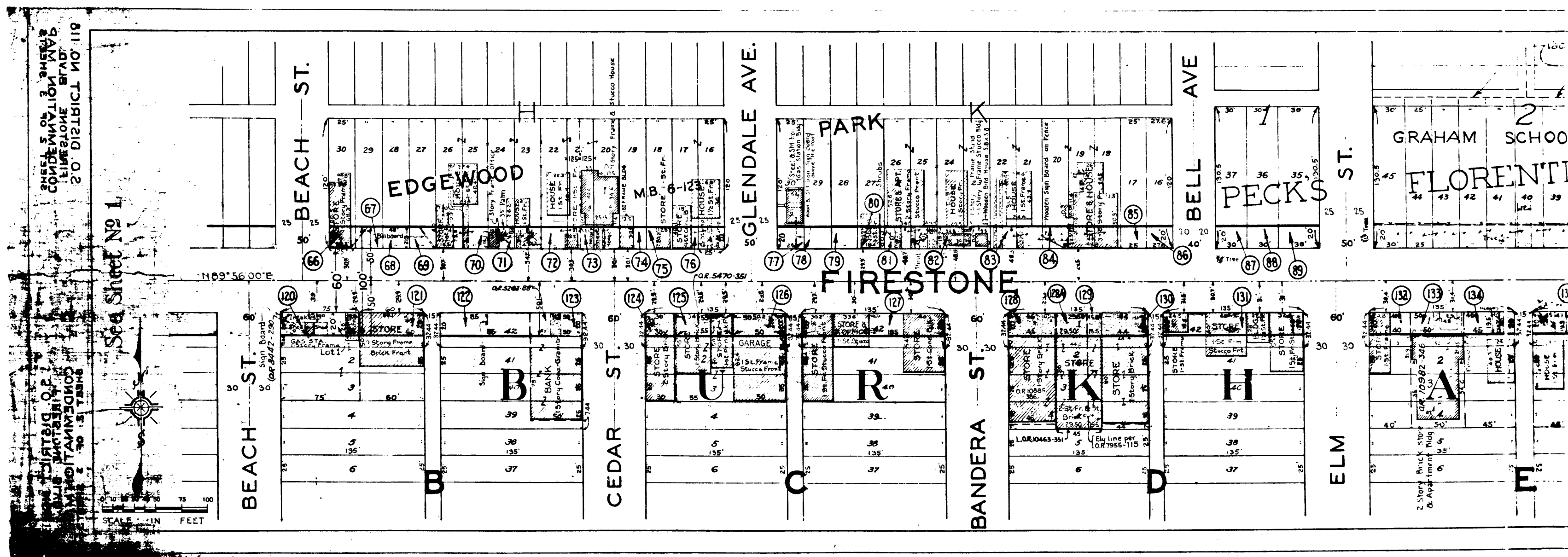
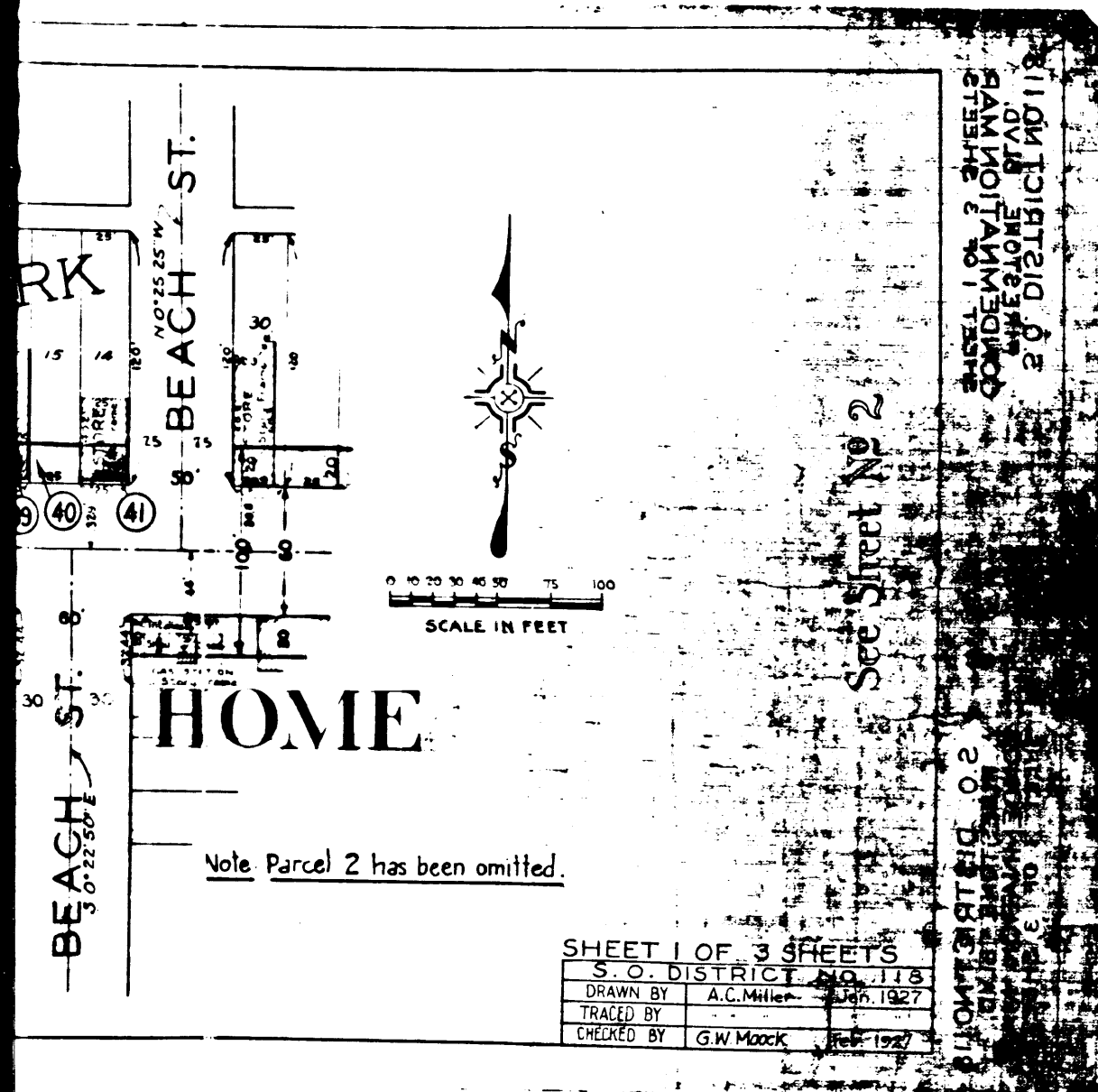
C.F. 1929 -

3

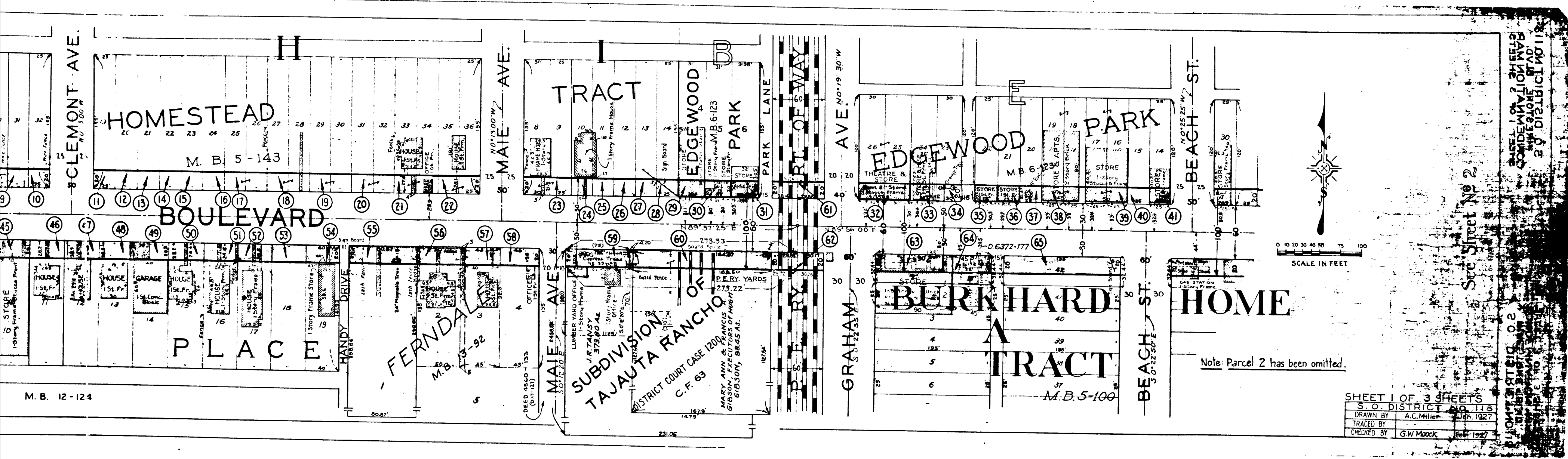


4

C.F. 1929 -



5
C.F. 1929 -



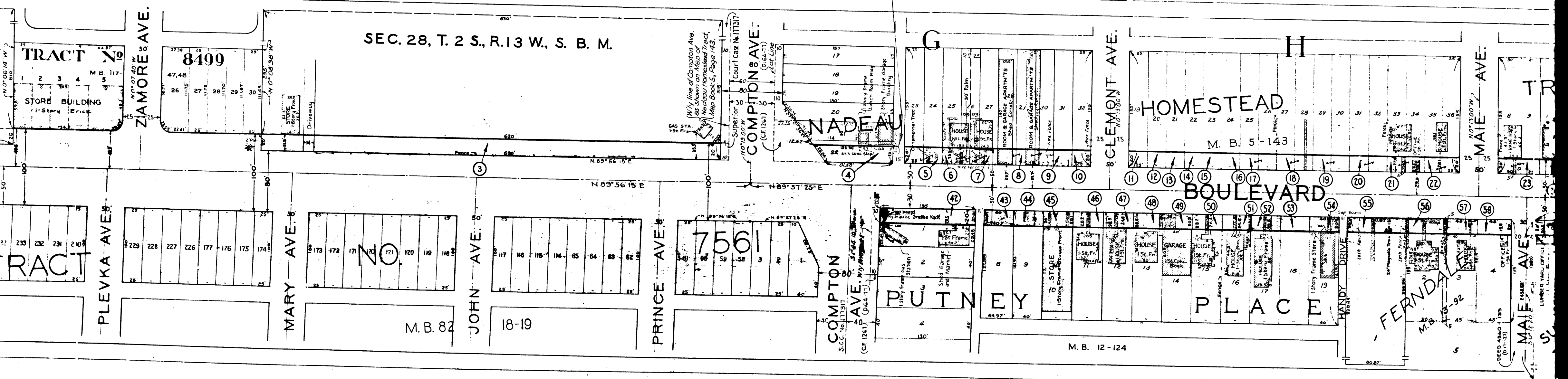
SHEET 1 OF 3 SHEETS
 S. O. DISTRICT NO. 118
 DRAWN BY A.C. Miller
 TRACED BY
 CHECKED BY G.W. Mook

6

C.F. 1929 -

See Sheet No 2
 DISTRICT NO. 118
 S. O. DISTRICT NO. 118
 DISTRICT NO. 118

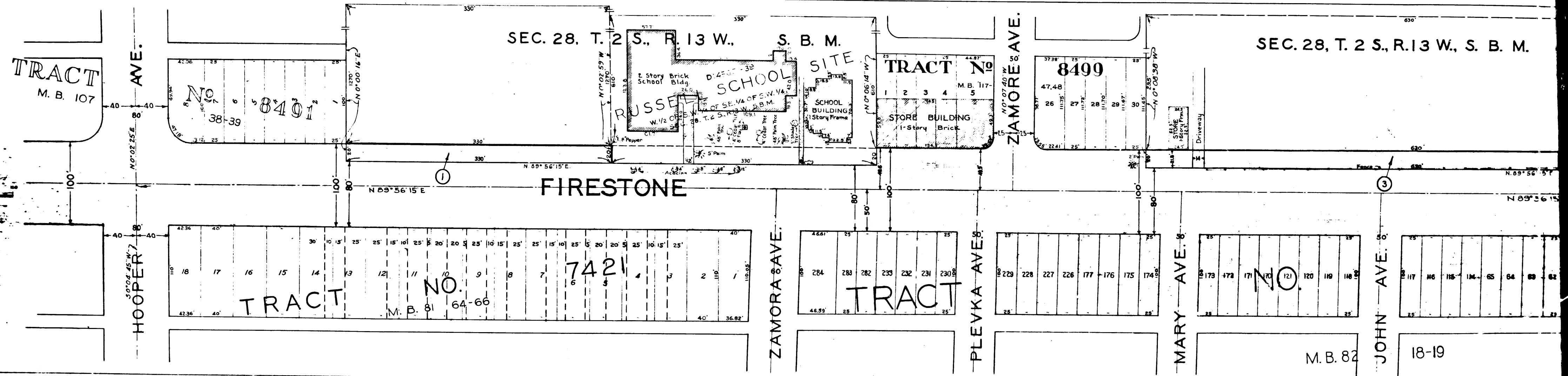
See Sheet No 1
 DISTRICT NO. 118
 S. O. DISTRICT NO. 118
 DISTRICT NO. 118



7

C.F. 1929 -

SECTION 28, T. 2 S., R. 13 W., S. B. M.



8

C.F. 1929 -