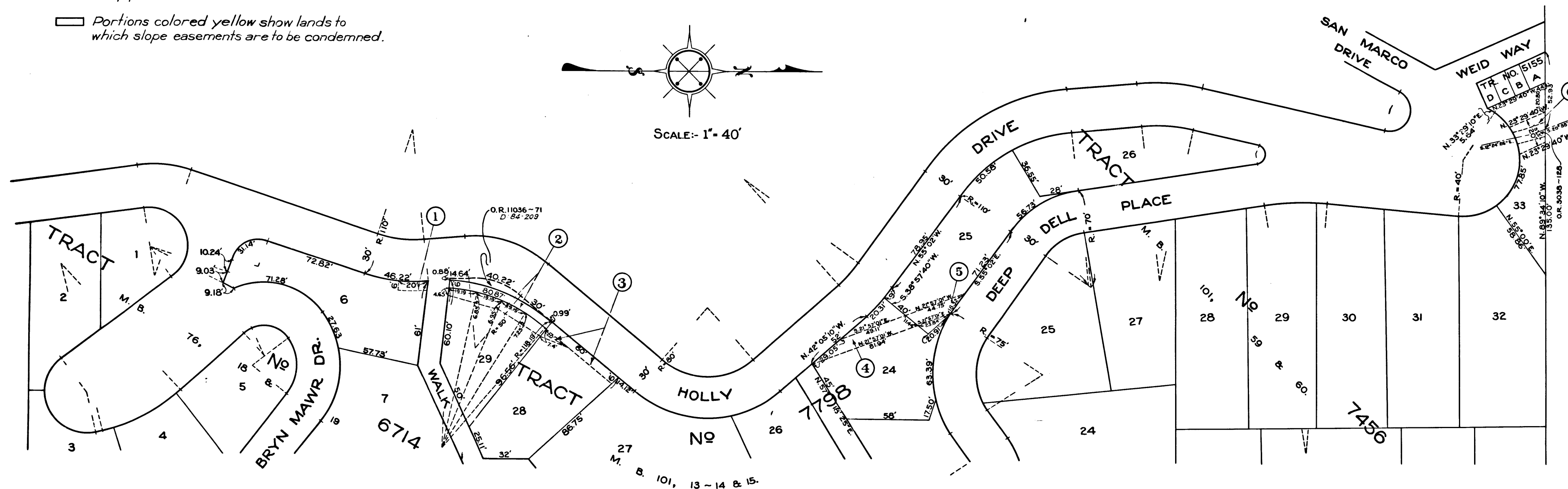
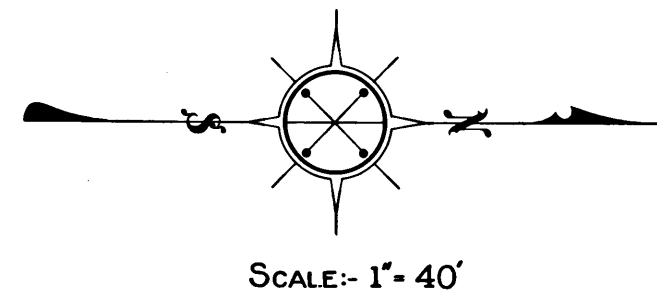


- ~LEGEND~
- Portions colored red show lands to which fee title is to be condemned for pipe line.
 - Portions colored yellow show lands to which slope easements are to be condemned.

EXHIBIT "A"



Superior Court Case No. 344711
 Suit for Condemnation
 Filed Aug. 8, 1932.
 City of Los Angeles, Pltff.
 Vs.

Bank of America et al. De:
 Order authorizing Plaintiff to
 take immediate possession, ren-
 dered Sept. 7th 1932.

Case dismissed Aug. 8, 1933.

Note: All parcels shown on this map
 deeded to City of Los Angeles by
 D:90-97, O.R. 12265-254.
 INDEX 40

C.F. 1936 -