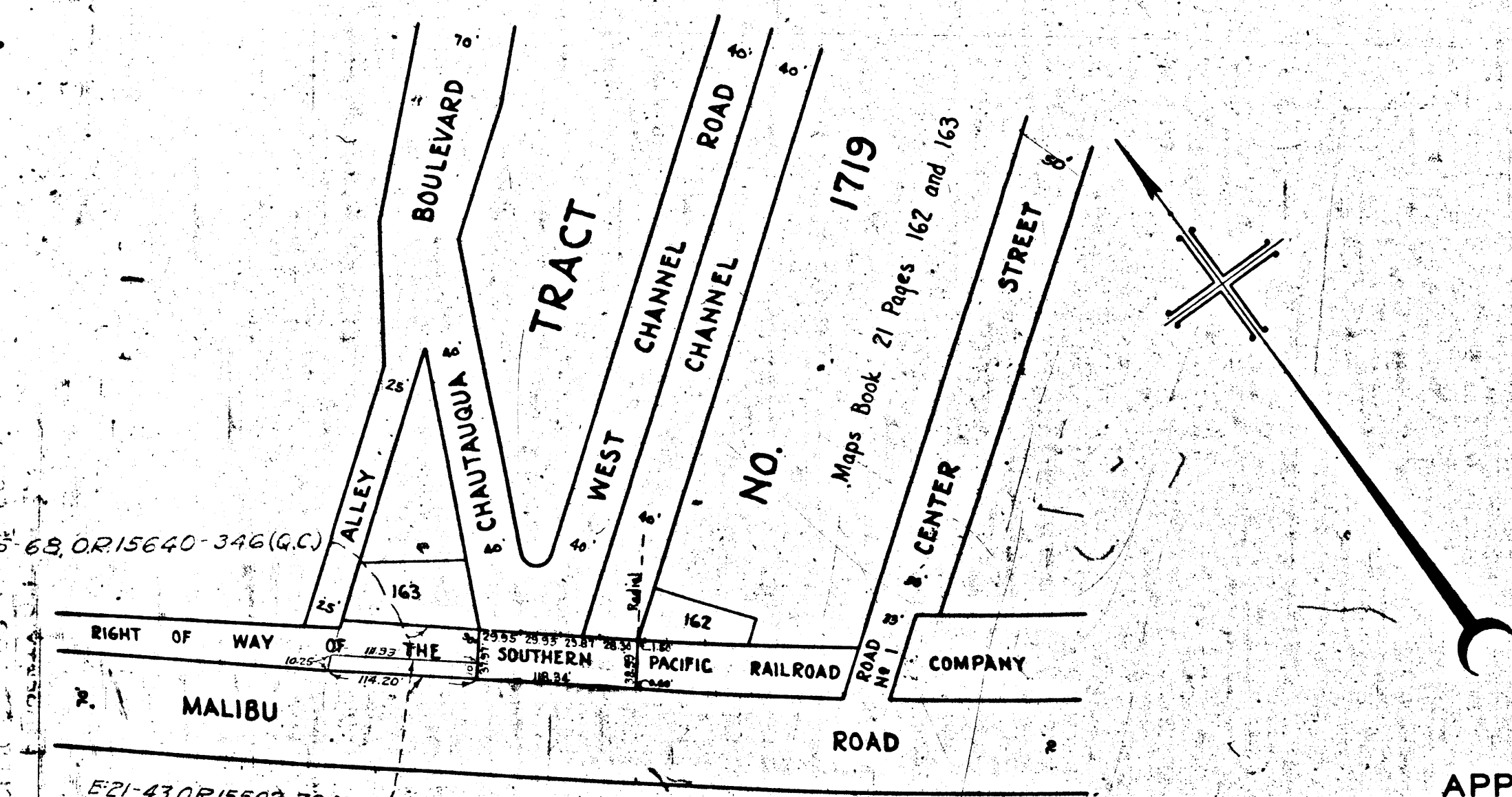


CHAUTAQUA BLVD. W. CHANNEL RD.
 & CHANNEL OVER S. P. R/W AT MALIBU ROAD
 FILE NO. 4014-(30) CHARGE NO. 12068

OS10-A

OS10-A



MAP
 SHOWING THE LAND TO BE CONDEMNED
 FOR THE
**OPENING OF A
 PUBLIC STREET**
 ACROSS THE RIGHT OF WAY
 OF THE
SOUTHERN PACIFIC RAILROAD COMPANY
 LYING
 NORTHEASTERLY OF AND CONTIGUOUS TO
MALIBU ROAD
 FROM A POINT

APPROXIMATELY ONE HUNDRED TWENTY (120) FEET SOUTHEASTERLY
 OF THE NORTHWESTERLY LINE OF CHAUTAUQUA BOULEVARD
 TO SAID
 NORTHWESTERLY LINE OF CHAUTAUQUA BOULEVARD
 IN THE
 CITY OF LOS ANGELES, CALIF.

IN ACCORDANCE WITH ORDINANCE NO. 69402

J. J. JESSUP - CITY ENGINEER

SCALE - 1 INCH = 100 FEET

MAY, 1931

NOTE:
 LAND TO BE CONDEMNED SHOWN COLORED RED

PACIFIC

OCEAN

Sht. 58
 Superior Court Case No. 344515
 Suit for Condemnation
 Filed Aug. 3rd, 1932
 City of Los Angeles, Plaintiff
 Vs
 Southern Pacific R.R. Co., Def.
 Order authorizing Plaintiff to
 take immediate possession ren-
 dered Aug. 22nd, 1932. \$1.00
 Case dismissed as to E.H. Delorey
 Aug. 7, 1941. J.B. 1176-128.
 Case dismissed Aug. 8, 1941

A-6120

OS10-A

OS10-A