

10TH 957 10TH 957

VEMCO PASADENA CALIF.

10TH 957 10TH 957

10TH 957 10TH 957

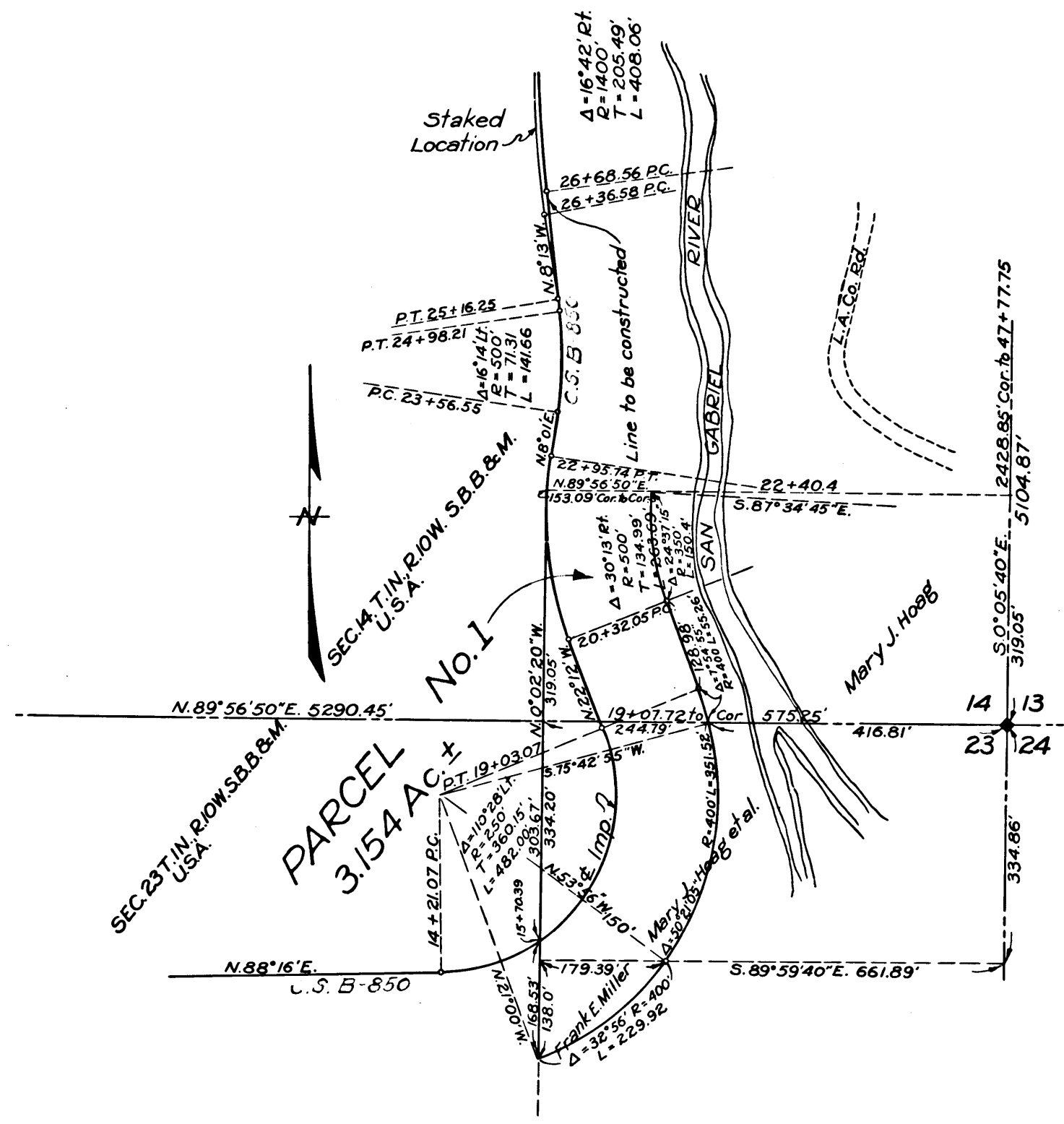


EXHIBIT "B"

CALIFORNIA HIGHWAY COMMISSION
 VII ~ L.A. 62-B
 Right of Way Map
 Scale: 1" = 200' (Approx) May 27, 1932.

A-335
 June 13
 Superior Court Case No. 343600
 Suit for Condemnation
 Filed July 14, 1932.
 The People of the State of Calif. Pltff.
 Vs.
 Mary J. Hoag et al. Def.
 Order authorizing Plaintiff to take
 Immediate possession, rendered Aug.
 2nd 1932 - Judg. Bk. 821-201.
 Case dismissed Feb. 7, 1934
 Deeded - D: J2-292, O.R. 12361-358

C.F. 1940 -

10TH 957 10TH 957