

SIXTH ST. VIADUCT
EAST APPROACH
26259

0850-A

MAP
SHOWING LAND TO BE CONDEMNED
FOR THE WIDENING AND LAYING OUT OF
WHITTIER BOULEVARD
ADJACENT TO THE NORTHEASTERLY LINE THEREOF
FROM BOYLE AVENUE TO INEZ STREET
IN THE
CITY OF LOS ANGELES, CALIFORNIA.

J.J. JESSUP - CITY ENGINEER SEPTEMBER, 1932
SCALE - 1 INCH = 50 FEET

IN ACCORDANCE WITH ORDINANCE NO. 71,977

AL-775

NOTES:
LAND TO BE CONDEMNED SHOWN COLORED RED.
FIGURES IN CIRCLES INDICATE THE PARCEL NUMBERS AS SET
FORTH IN PARAGRAPH IX OF THE COMPLAINT

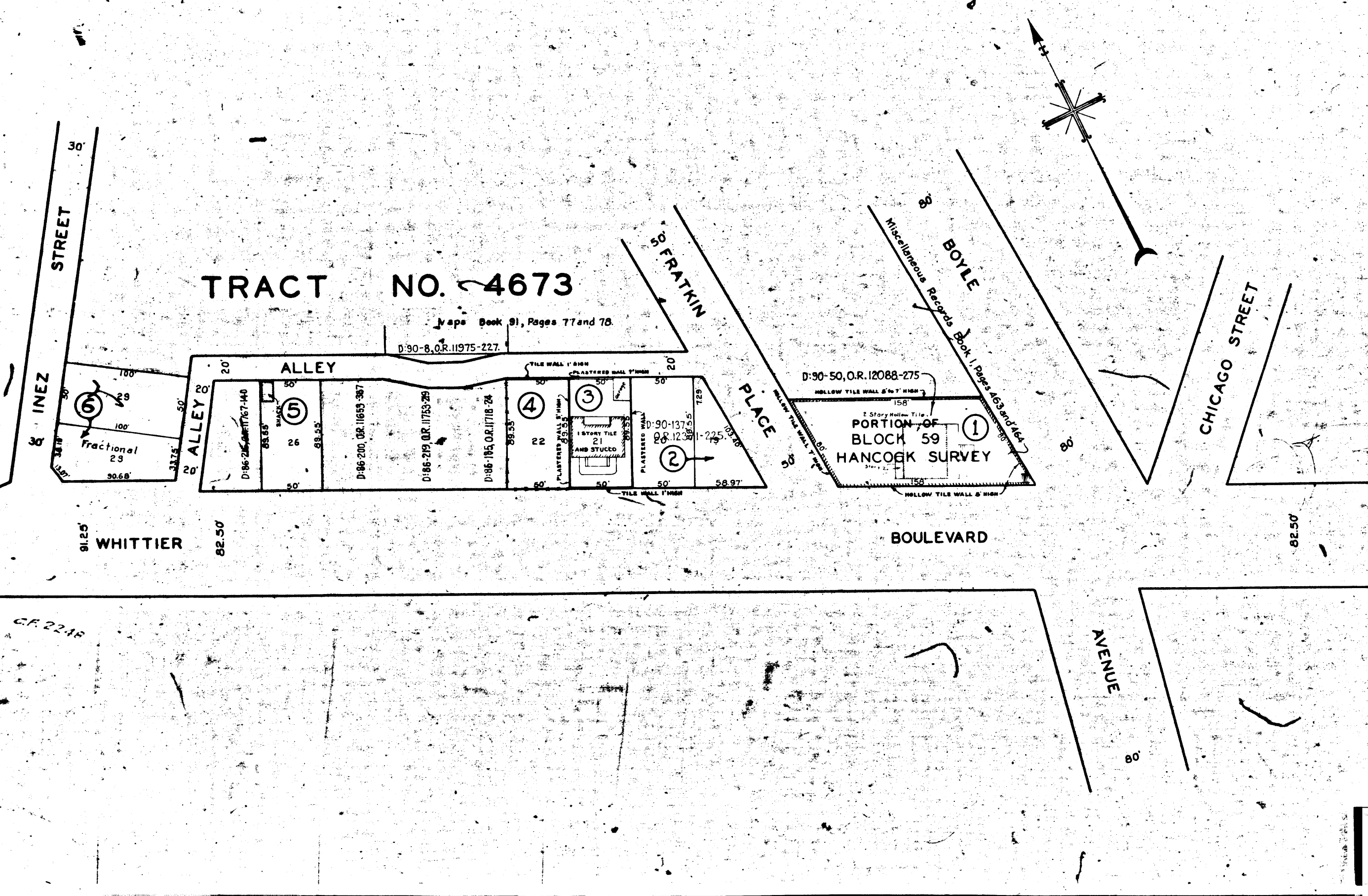
CITY CLERKS FILE NO. 8320-1931
COUNCIL ORDER NO. 26259

DRAWN BY TUPPER
CHECKED BY SNELSON

NOTE: - To be acquired for public grounds
and public buildings according to Complaint.

A-6289

0850-A



Superior Court Case No. 348876
Suit for Condemnation
Filed Nov. 4th 1932
City of Los Angeles, Plaintiff
Vs
Elmer Ruthvand Warner et al, Def.
Order authorizing Pltff. to take
immediate possession rendered
Dec. 14, 1932.
Final Judgment in favor of Pltff as to
parcels 3, 4, 5, 6, rendered May 4, 1934.
D:95-69, O.R. 2751-203.