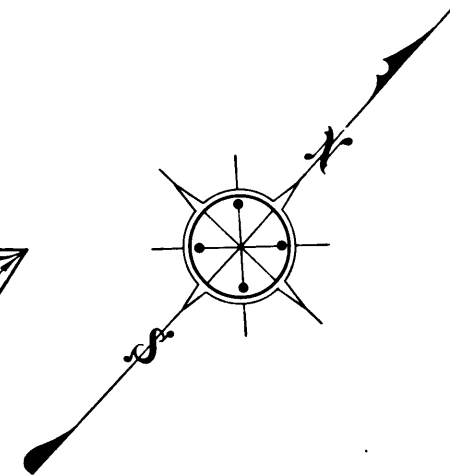
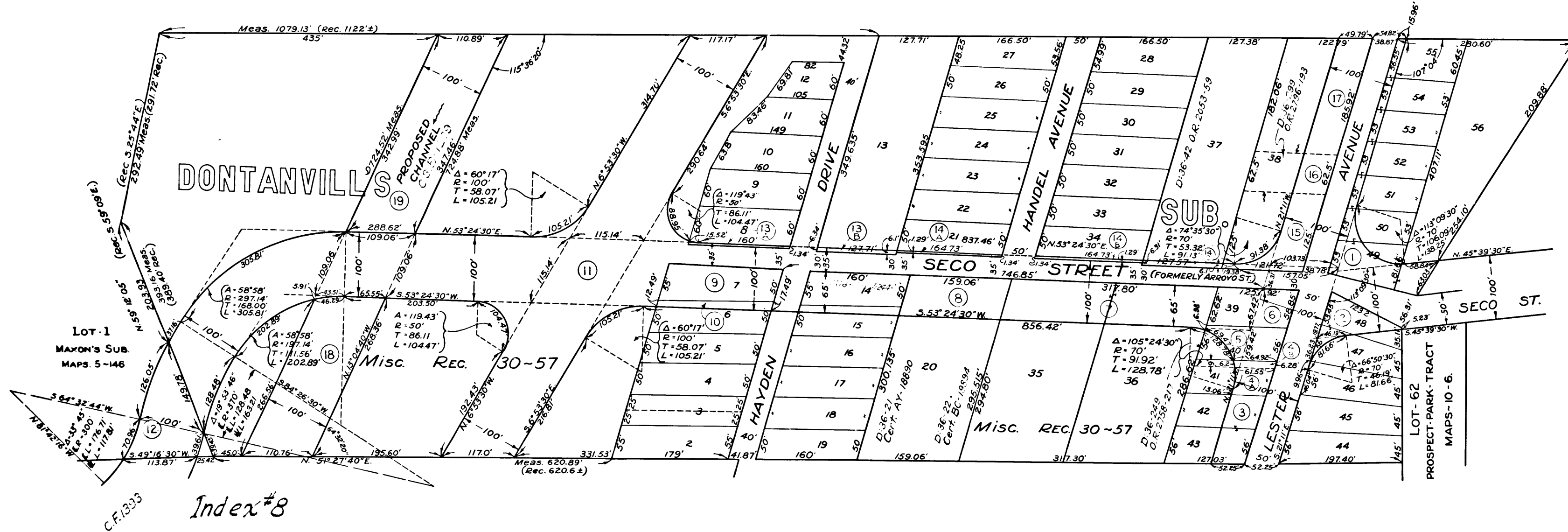


EXHIBIT 'B'



Index #8
 Superior Court Case No. 121291
 Suit for Condemnation
 Filed Apr. 27, 1923.
 City of Pasadena, Pltff.
 Vs.
 B. O. Kendall et al Def.
 Interlocutory decree as to Parcel 12, rendered Nov. 9, 1923
 Interlocutory decree as to Parcels 1, 2, 3, 4a, 4b, 6, 7, 11, 13b, 14a, 14b, 15, 17 rendered 3-18-24
 Interlocutory decree as to Parcels 9, 10, 13a, rendered Nov. 21, 1924.
 Final judgment in favor of Pltff as to Parcels 1, 2, 3, 4a, 4b, 6, 7, 9, 10, 11, 12, 13a, 13b, 14a, 14b, 15, 17 rendered May 2nd, 1924.

D-88-167, O.R. 3432-339

INDEX 41-42

DRAWN BY... N.W.D. CHECKED BY... FIELD BOOKS... APPROVED: <i>N.C. Banks</i> CITY ENGR. & SUPT. OF STREETS	CITY OF PASADENA OFFICE OF CITY ENGINEER & SUPERINTENDENT OF STREETS PROPOSED STREETS & FLOOD OR STORM WATER CHANNEL THROUGH DONTANVILL SUBDIVISION AND LOT No. 1 MAXON'S SUB.	DATE SECT. 1922... SCALE 1" = 100' DRAWING NUMBER C-86
---	--	--

C.F. 1943 -