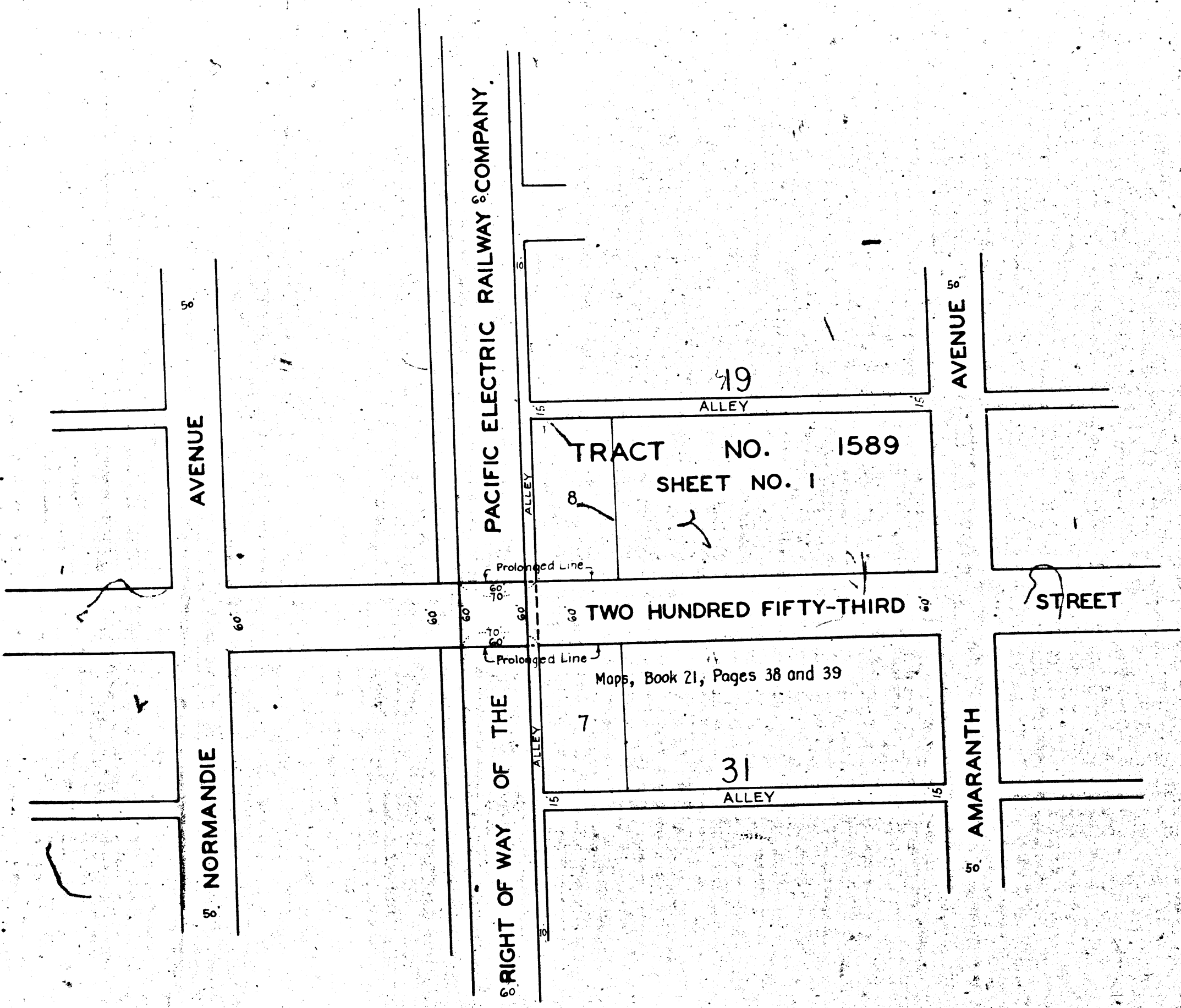


ST50-A

ST50-A



MAP
 SHOWING LAND TO BE CONDEMNED
 FOR THE OPENING AND EXTENDING OF
TWO HUNDRED FIFTY-THIRD STREET
 ACROSS THE RIGHT OF WAY
 OF THE
PACIFIC ELECTRIC RAILWAY COMPANY
 BETWEEN
AMARANTH AVENUE
 AND
NORMANDIE AVENUE
 IN THE
 CITY OF LOS ANGELES, CAL.
 IN ACCORDANCE WITH ORDINANCE NO. 71707
 J.J. JESSUP-CITY ENGINEER OCTOBER, 1932
 SCALE 1 INCH = 100 FEET

Note: Land to be condemned shown colored red.

Index 28

A-6272

Superior Court No. 358037
 Suit for Condemnation
 Filed Dec. 11, 1932
 City of Los Angeles Plaintiff
 Pacific Electric Co., Defendant
 Final Judgment in favor of Plaintiff, as
 per map, rendered September 12, 1933
 D:90-120, O.R. 12358-219.

Belle Porte Ave & 253rd St Sewer District
 File No. 5020 1930 Order No. 1385

ST50-A

ST50-A

