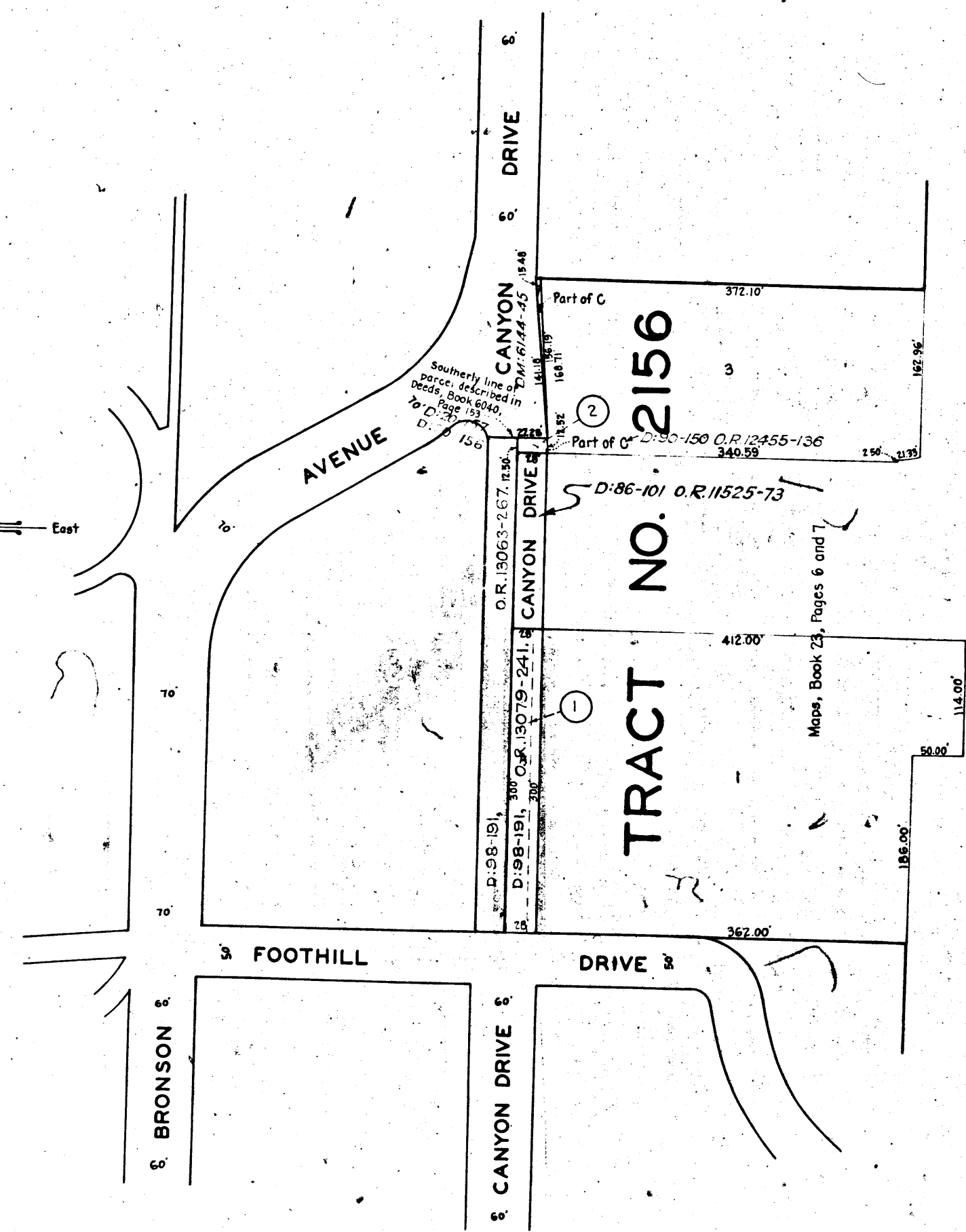
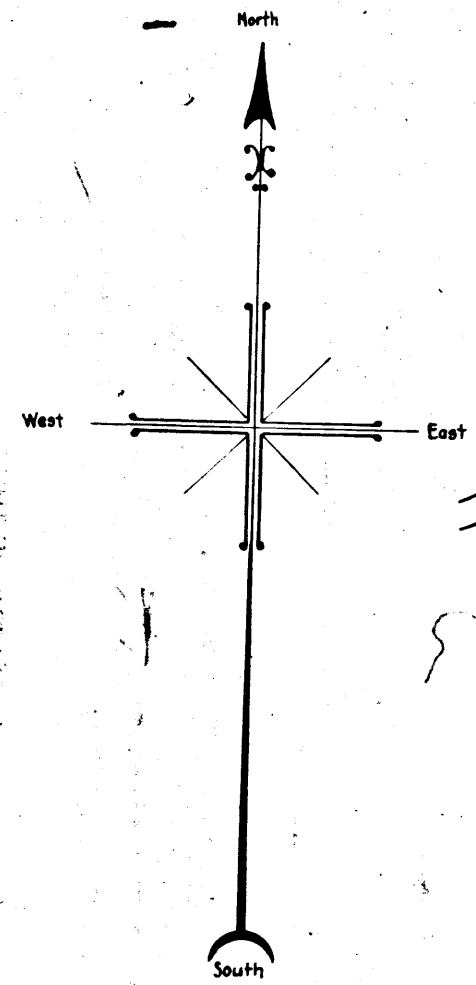


A-0530-A

A-0530-A



MAP
 SHOWING THE LAND TO BE CONDEMNED
 FOR THE OPENING AND EXTENDING OF
CANYON DRIVE
 BETWEEN
 CANYON DRIVE AT BRONSON AVENUE
 AND
 FOOTHILL DRIVE AT CANYON DRIVE
 IN THE CITY OF LOS ANGELES, CALIF.
 IN ACCORDANCE WITH ORDINANCE NO. 71015
 J. J. JESSUP-CITY ENGINEER MARCH 1932
 SCALE 1 INCH = 100 FEET

Note: Land to be condemned shown colored red
 Figures in circles indicate the parcel numbers
 as set forth in paragraph 1 of the complaint.

*Superior Court Case No. 352272
 Suit for condemnation
 Filed Jan. 24th 1934
 City of Los Angeles, Plaintiff
 vs
 Edwin Carewe et al, Defendants.
 Case dismissed Feb. 18, 1936.*

INDEX 40

A-0530-A

A-0530-A