

EXHIBIT "A"  
**STREET OPENING DISTRICT NO. 140**  
**OF THE COUNTY OF LOS ANGELES**  
 FOR  
**THE OPENING, WIDENING, AND EXTENDING OF**  
**BROADWAY, ET AL**

MAP SHOWING PROPERTY TO BE ACQUIRED, IN ACCORDANCE WITH THE PROVISIONS  
 OF THE COUNTY STREET OPENING ACT OF 1923, APPROVED MAY 11, 1923.  
 SCALES AS SHOWN. APRIL, 1933.

J. E. ROCKHOLD - COUNTY SURVEYOR

SUBMITTED:

*Alfred Jones*  
 ALFRED JONES  
 CHIEF DEPUTY

APPROVED:

*J. E. Rockhold*  
 J. E. ROCKHOLD,  
 COUNTY SURVEYOR

APPROVED AS TO FORM:  
 EVERETT W. MATTOON, COUNTY COUNSEL

*W. H. Hession*  
 DEPUTY COUNTY COUNSEL

**LEGEND**

- PORTIONS COLORED RED SHOW LOCATION, GENERAL ROUTE, AND TERMINI OF LAND IN WHICH AN UNQUALIFIED EASEMENT FOR PUBLIC HIGHWAY PURPOSES IS SOUGHT TO BE ACQUIRED.
- PORTIONS COLORED RED SHOW LAND IN WHICH THE PUBLIC HAS NO EASEMENT FOR HIGHWAY PURPOSES.
- NUMBERS IN CIRCLES INDICATE PARCELS SOUGHT TO BE CONDEMNED.
- THE PARCELS ARE DESCRIBED IN PARAGRAPH VII OF THE COMPLAINT.
- FIGURES SHOWN IN PARENTHESES ( ) ARE EITHER RECORD DISTANCES OR ARE CALCULATED FROM RECORD DISTANCES.
- FIGURES SHOWN THUS:  
 0,000 INDICATE AREA TO BE ACQUIRED, IN SQUARE FEET.  
 00,000 INDICATE AREA OF HOLDING, INCLUDING AREA TO BE ACQUIRED, IN SQUARE FEET.

Superior Court Case No. 358198  
 Suit for Condemnation  
 Filed June 6, 1933  
 County of Los Angeles, Plff.  
 vs  
 Walter E. Butler et al, Def.  
 Interlocutory judgment as per  
 map, rendered Nov. 16, 1934.  
 Judgment, E.K. 893 '33  
 Final Judgment as per map,  
 rendered April 22, 1936.  
 E16-102, Judg. Ex. 3-12-12

S. O. DISTRICT NO. 140	
SHEET NO. 3 OF 3 SHEETS	
DRAWN BY	JEWELL JUNE 1928
TRACED BY	JEWELL JULY 1928
CHECKED BY	VOSS & SILVERMAN DEC. 1928
REVISED	
C.H.M. JUNE 1932	
C.S. INDEX MAP	

C.F. 1951 -

SHEET 3 OF 3 SHEETS  
 CONDEMNATION  
 DISTRICT NO. 140

SHEET 3 OF 3 SHEETS  
 CONDEMNATION  
 DISTRICT NO. 140

T R A C T

M. B. 28 - 94 & 95

N O.

LOT B

2 2 3 9

M. B. 28 - 94 & 95

T R A C T

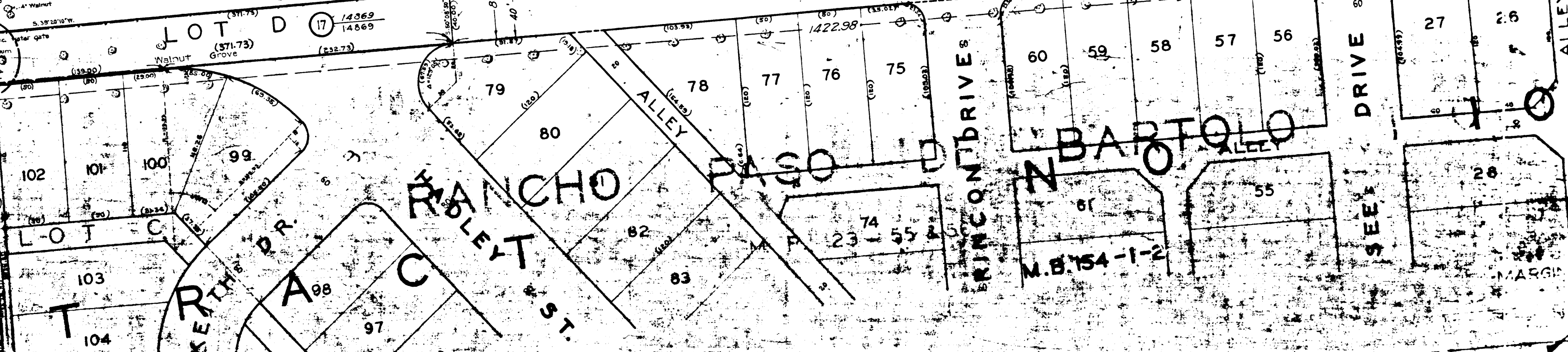
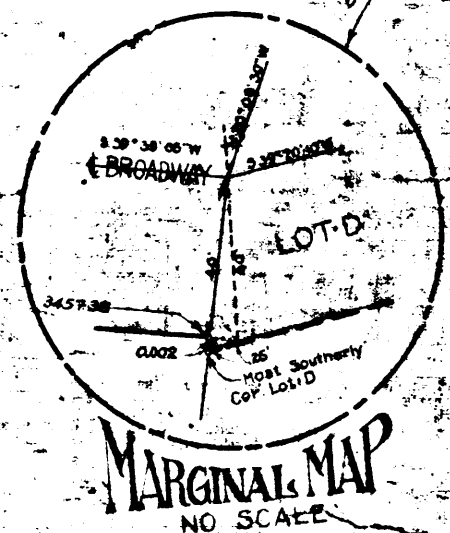
7 - 52

BROADWAY

B R O A D W A Y

LOT D

E BARTOLO



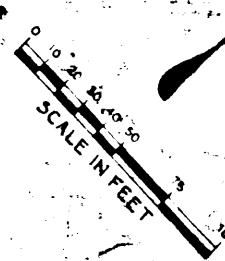
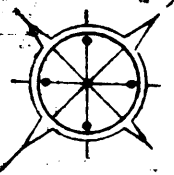
M.B. 154-1-2

DRIVE

BARTOLO

ALLEY

SEE



2

C.F. 1951 -

See Sheet No. 3

SHEET 1 OF 3 SHEETS  
Condensation Map  
Bloomington  
2.0. DISTRICT No. 140

SHEET 5 OF 3 SHEETS  
Condensation Map  
Bloomington  
2.0. DISTRICT No. 140

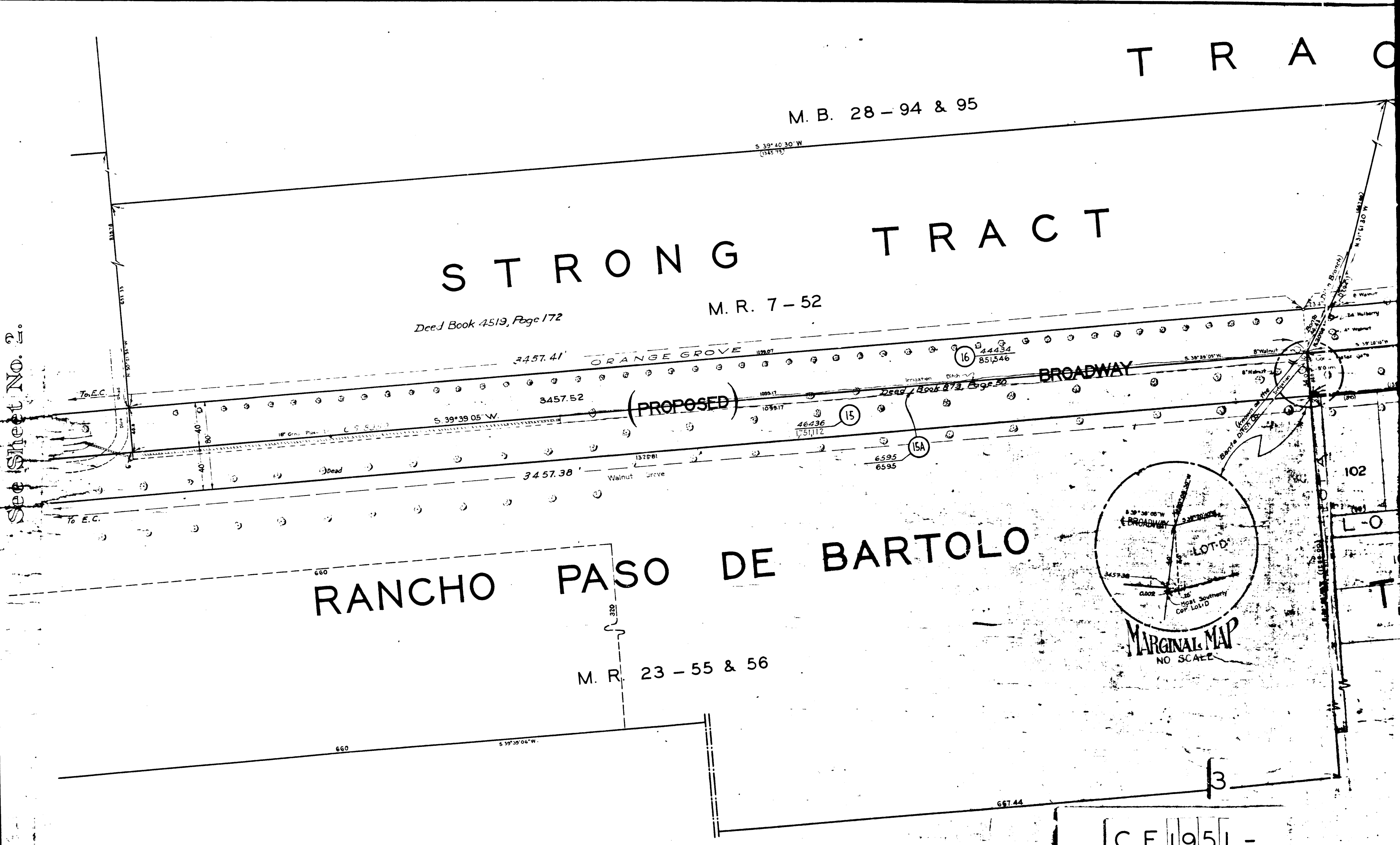
SHEET 2 OF 3 SHEETS  
S. O. DISTRICT 140

DRAWN BY	R. J. James	June 1928
REVISION BY	R. J. James	July 1928
REVISION BY	A. A. Voss, A. J. ...	Dec 1928

SHEET 2 OF 3 SHEETS  
Condensation Map  
Bloomington  
2.0. DISTRICT No. 140

See Sheet No. 2.

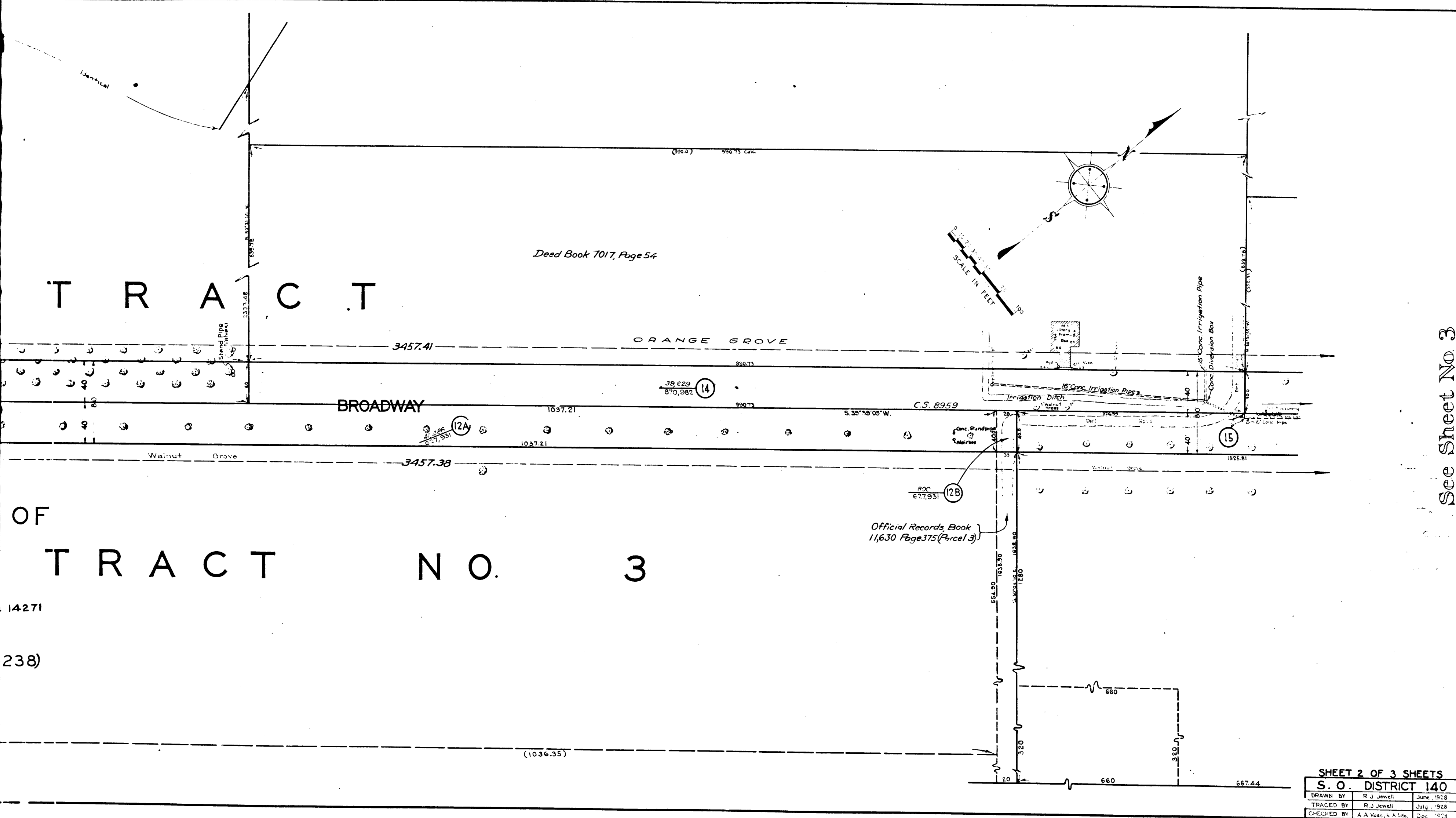
SHEET 3 OF 3 SHEETS  
Condensation Map  
Bloomington  
2.0. DISTRICT No. 140



C.F. 1951 -

T R A C T

Deed Book 7017, Page 54



OF TRACT NO. 3

14271

238)

SHEET 2 OF 3 SHEETS  
S. O. DISTRICT 140

DRAWN BY	R. J. Jewell	June, 1928
TRACED BY	R. J. Jewell	July, 1928
CHECKED BY	A. A. Voss, & A. Loh	Dec. 1928

C.F. 1951 -

See Sheet No. 3

SHEET 3 OF 3 SHEETS  
CONDEMNATION MAP  
BROADWAY  
S. O. DISTRICT No. 140

SHEET 5 OF 3 SHEETS  
CONDEMNATION MAP  
BROADWAY  
S. O. DISTRICT No. 140

4

SHEET 3 OF 3 SHEETS  
CONDEMNATION MAP  
BROADWAY  
S. O. DISTRICT No. 140

See Sheet No. 2.

SHEET 3 OF 3 SHEETS  
CONDEMNATION MAP  
BROADWAY  
S. O. DISTRICT No. 140

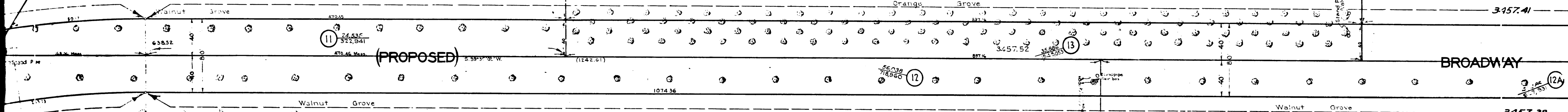
PASO DE BARTOLO

M. R. 7 - 52

Official Records, Book 6020, Page 396

STRONG TRACT

56



(PROPOSED)

BROADWAY

DUNLAP AND TYLER TRACT NO

SUBDIVISION OF

Official Records Book 11,630 Page 375 (Parcel 2)

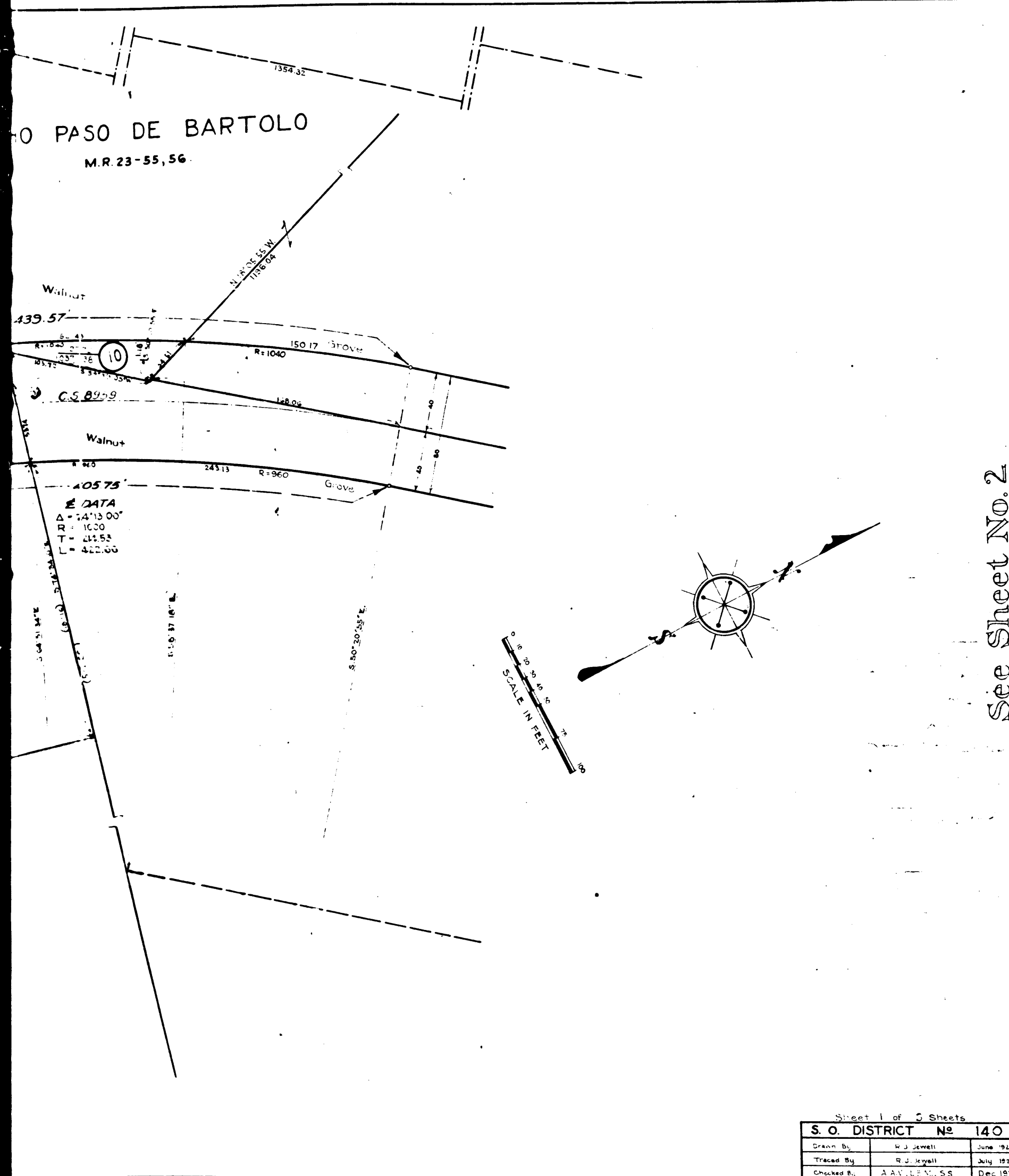
S.C.C. NO. 14271

(C. F. 238)

DATA  
L 1413.07  
L 11.07  
L 11.58  
L 11.27 58

5

C.F. 1951 -

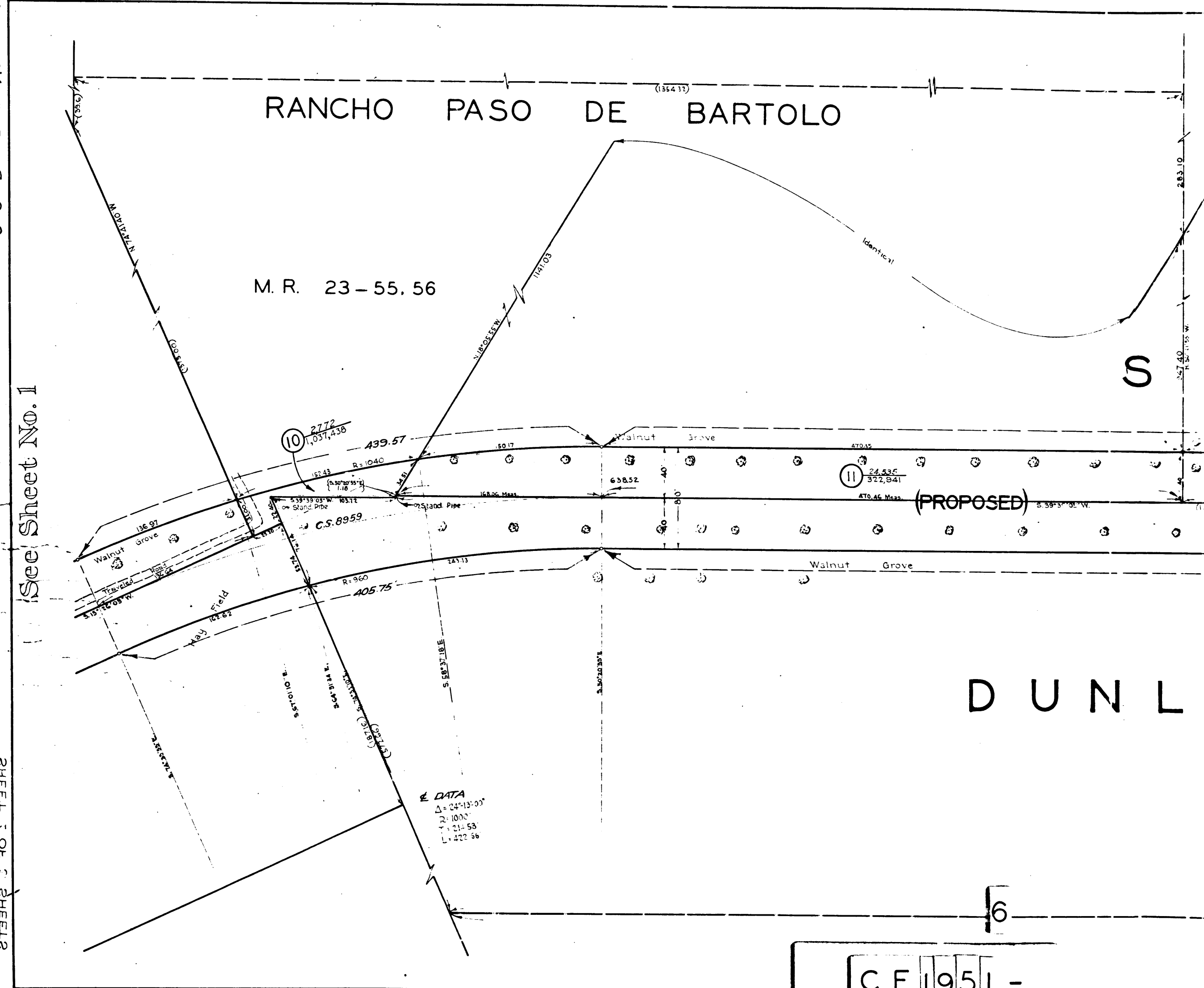


See Sheet No. 2

Sheet 1 of 3 Sheets

S. O. DISTRICT	№ 140
Drawn By	R. J. Jewell June 1918
Traced By	R. J. Jewell July 1918
Checked By	A. A. L. P. M. S. S. Dec. 1928

SHEET 1 OF 3 SHEETS  
 CONDEMNATION MAP  
 BROWNS VALLEY  
 S. O. DISTRICT No. 140  
 041 IN TARRANT DISTRICT  
 2. O. DISTRICT No. 2



See Sheet No. 1

SHEET 2 OF 3 SHEETS  
 CONDEMNATION MAP  
 BROWNS VALLEY  
 S. O. DISTRICT No. 140

C.F. 1951 -



REGISTRAR'S CERTIFICATE OF TITLE DX41975

# TRACT No. 1219

M. B. 17 - 188

RANCHO PASO DE BARTOLO  
M.R. 23-55, 56.

BROADWAY

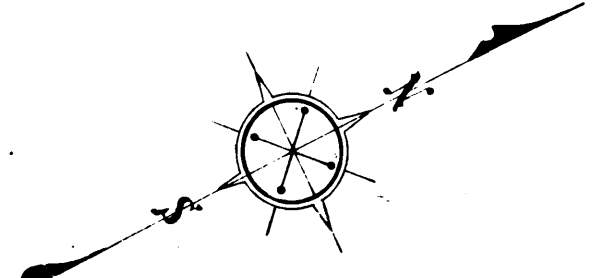
(PROPOSED)

# JAS. M. KING TRACT

M. B. 2-7

DATA  
1000' 00" 33' W  
14' 10" 10" N  
280' 34"

DATA  
Δ = 24°13'00"  
R = 1600'  
T = 214.55'  
L = 422.60'



SCALE IN FEET

7

C.F. 1951 -

Sheet 1 of 2 Sheets			
S. O. DISTRICT No. 140			
Drawn By	R. J. Smith	July 1918	
Traced By	R. J. Smith	July 1918	
Checked By	A. J. Smith	July 1918	

See Sheet No. 2

WASHINGTON CENTER

REGISTRAR'S CERTIFICATE OF TITLE P8243

GERTRUDES

THE SANTA GERTRUDES LAND ASSOCIATION

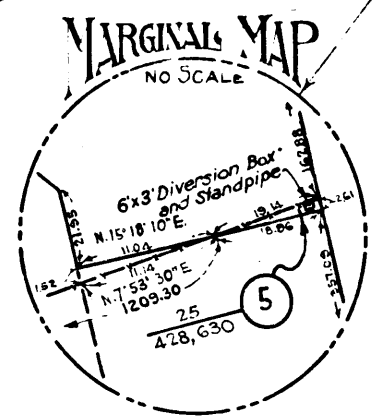
SANTA GERTRUDES TRACT No 4

M. R. 1-502  
(M. R. 32-18)

Deed Book 1054, Page 199

AREA = 313.392<sup>±</sup>

Deed Book 1301, Page 42



REGISTRAR'S CERTIFICATE OF TITLE DX41975

TRACT

No. 121  
LOT 2

M. B. 17-138

816.63

1099.57

May Field

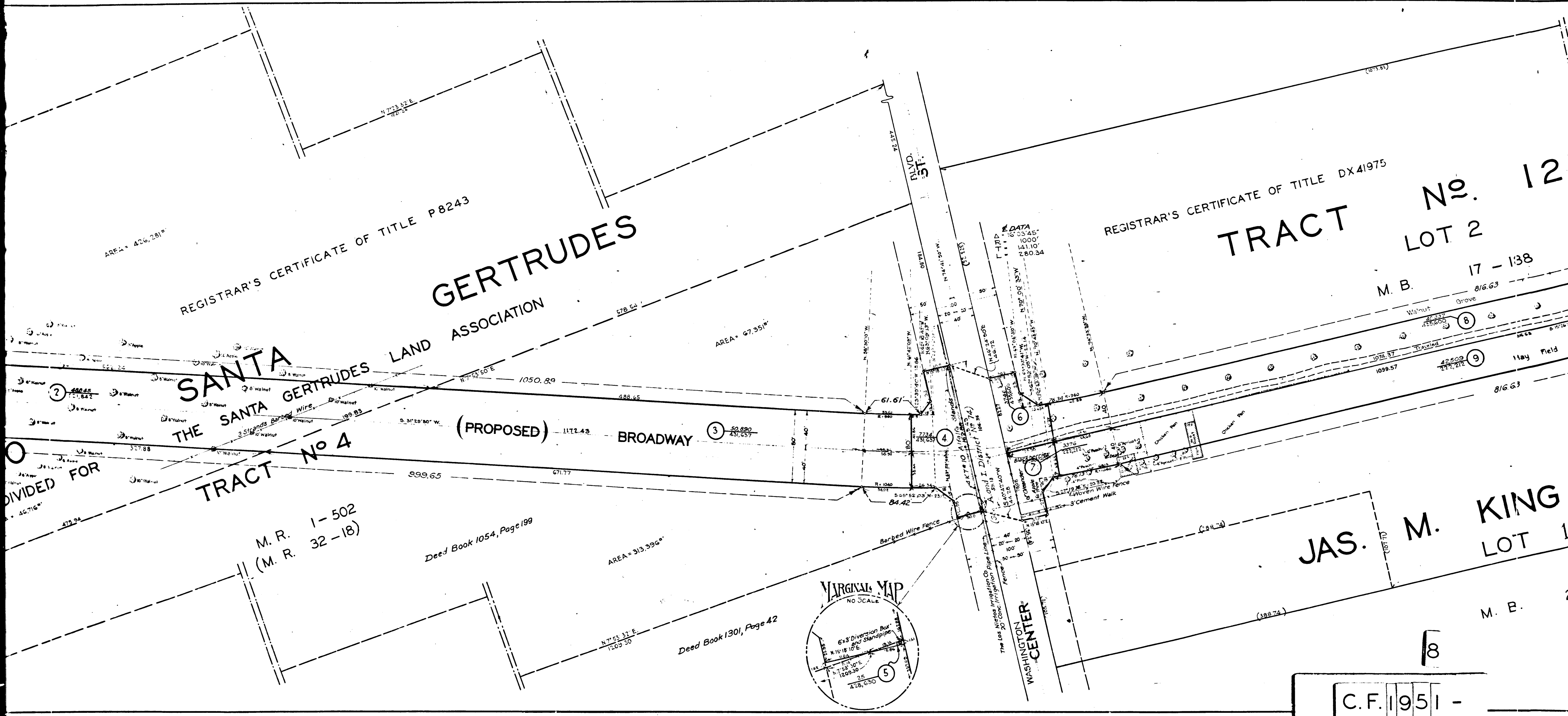
816.63

JAS. M. KING  
LOT 1

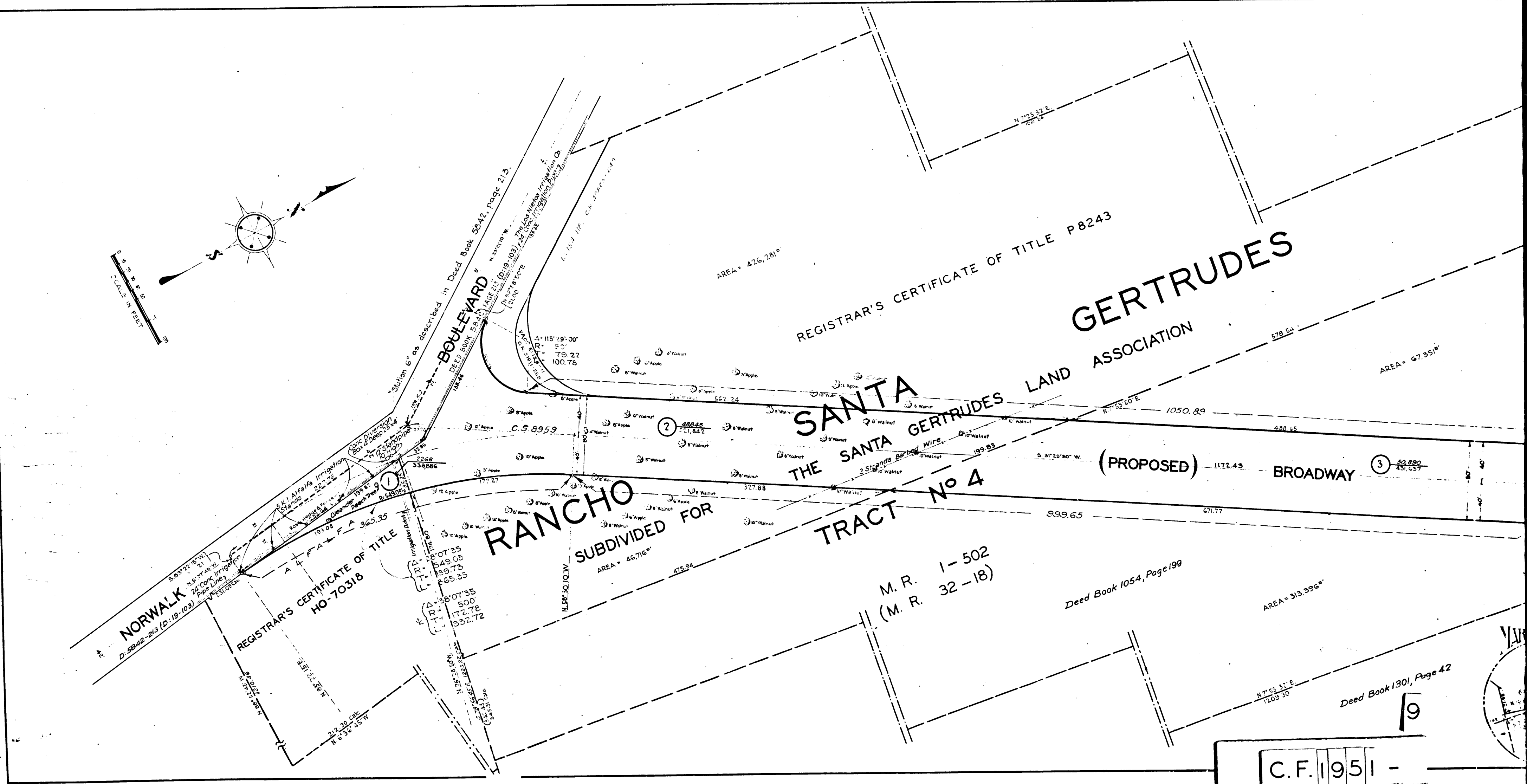
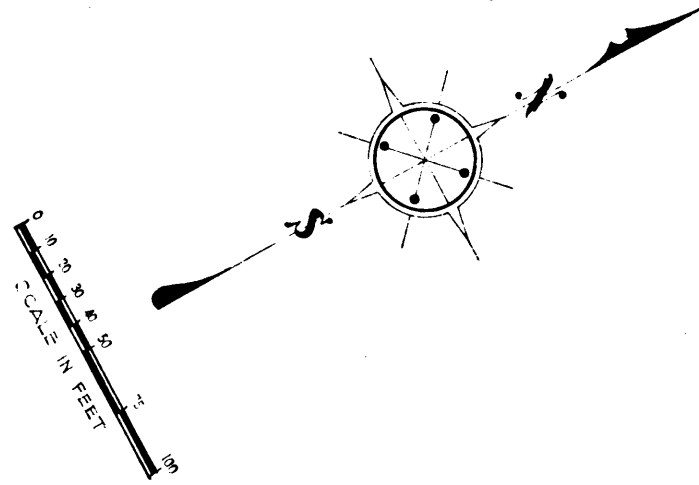
M. B. 2-

C.F. 1951 -

8







REGISTRAR'S CERTIFICATE OF TITLE P 8243  
GERTRUDES LAND ASSOCIATION

SANTA GERTRUDES TRACT No 4  
SUBDIVIDED FOR

REGISTRAR'S CERTIFICATE OF TITLE HO-70318

NORWALK REGISTRAR'S CERTIFICATE OF TITLE D 5842-213 (D:19-103)

M. R. 1-502  
(M. R. 32-18)

Deed Book 1054, Page 199

Deed Book 130, Page 42

C.F. 1951 - 9