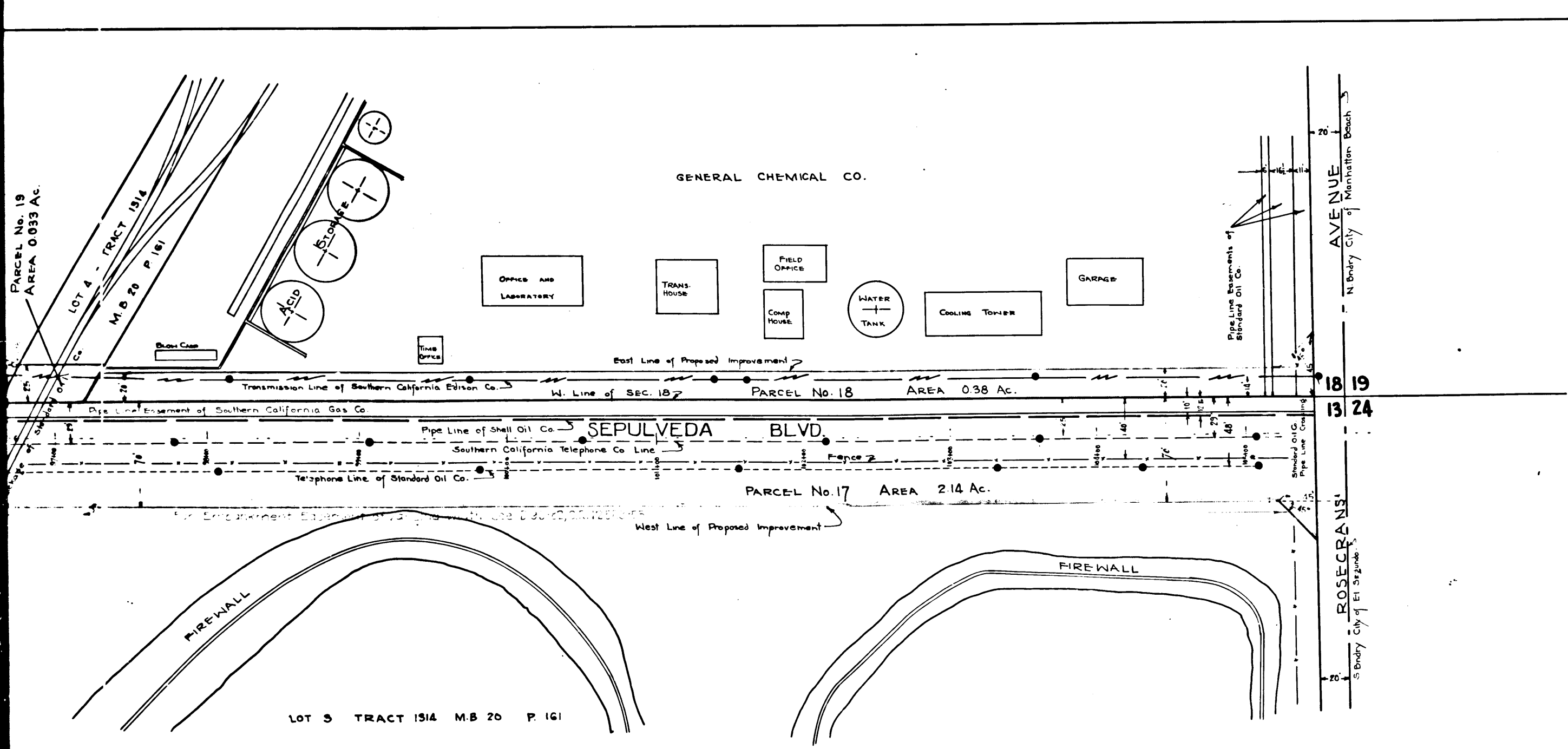


MAP
 SHOWING PROPERTY TO BE
 ACQUIRED FOR THE IMPROVEMENT OF
ARIZONA DRIVE SEPULVEDA BLVD.
 (STATE HIGHWAY NO. 60)
 IN MUNICIPAL IMPROVEMENT DISTRICT NO. 1
 CITY OF EL SEGUNDO CALIF.
 SCALE 1" = 50'
 INDEX 23

M330311
 SHEET 3 OF 6 SHEETS.



Superior Court Case No. 357580
 Suit for Condemnation
 Filed May 25, 1933
 City of El Segundo, Plaintiff
 Vs
 Silas T. Brock et al, Defendants.
 Order authorizing Pltff to take
 immediate possession, rendered
 Oct. 9th 1933.
 Final judgment in favor of Pltff. as per
 map rendered Nov. 25, 1934.
 D:39-194, C.R. 13174-32

MAP
 SHOWING PROPERTY TO BE
 ACQUIRED FOR THE IMPROVEMENT OF
ARIZONA DRIVE SEPULVEDA BLVD.
 (STATE HIGHWAY NO. 60)
 IN MUNICIPAL IMPROVEMENT DISTRICT NO. 1
 CITY OF EL SEGUNDO CALIF.
 SCALE 1" = 50'
 INDEX 25

LEGEND
 Dedicatd Streets shaded
 Roadway Easements shaded
 Property to be acquired outlined

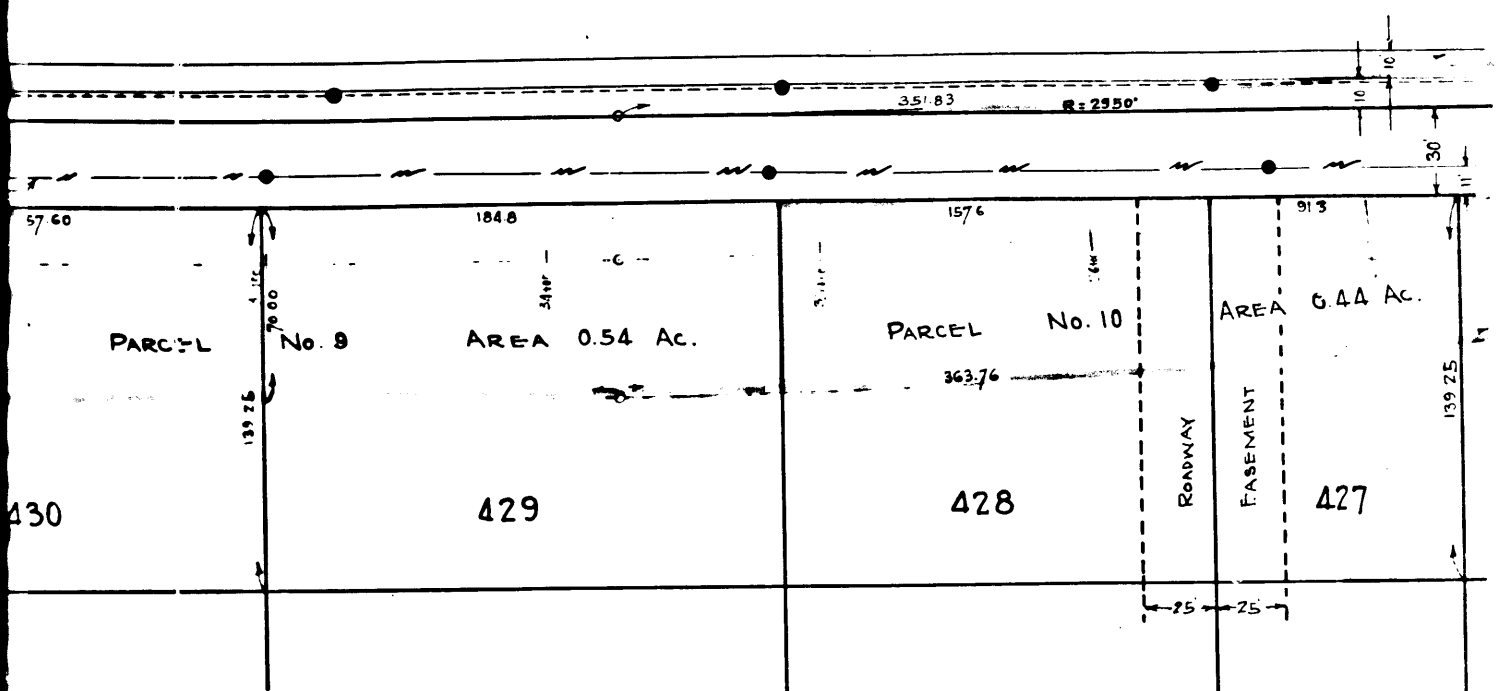
M330311
 SHEET 6 OF 6 SHEETS.

C.F. 1954-

MAP
 SHOWING PROPERTY TO BE
 ACQUIRED FOR THE IMPROVEMENT OF
ARIZONA DRIVE SEPULVEDA BLVD.
 (STATE HIGHWAY NO. 60)
 IN MUNICIPAL IMPROVEMENT DISTRICT NO. 1
 CITY OF EL SEGUNDO, CALIF.
 SCALE: 1" = 50'

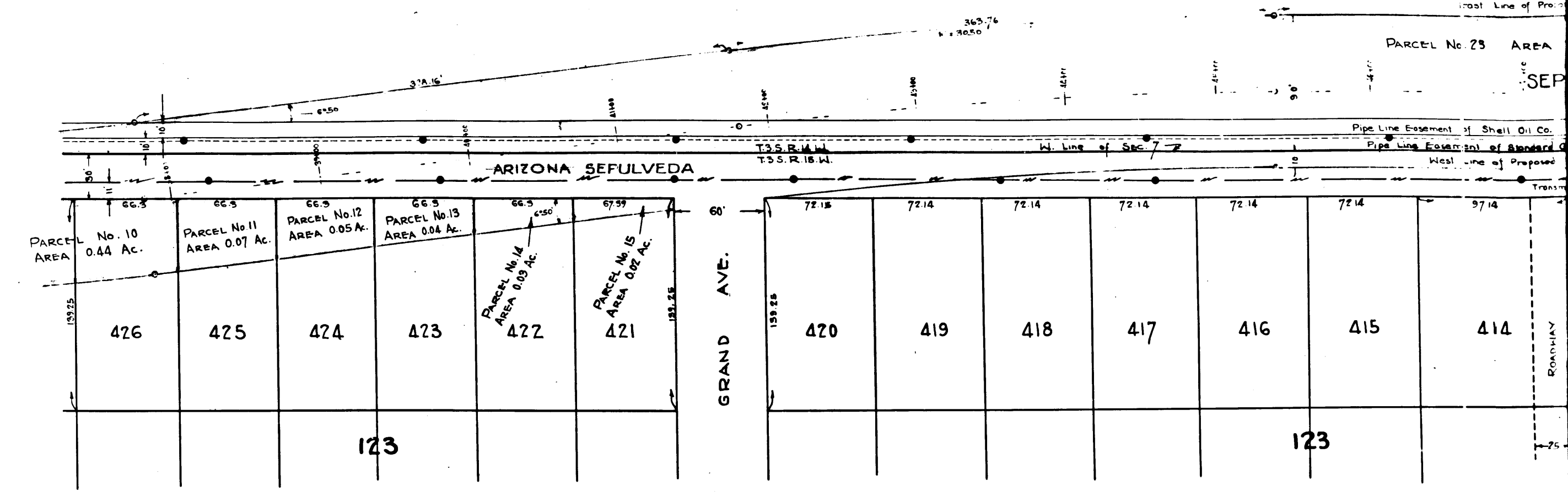


SEC 7



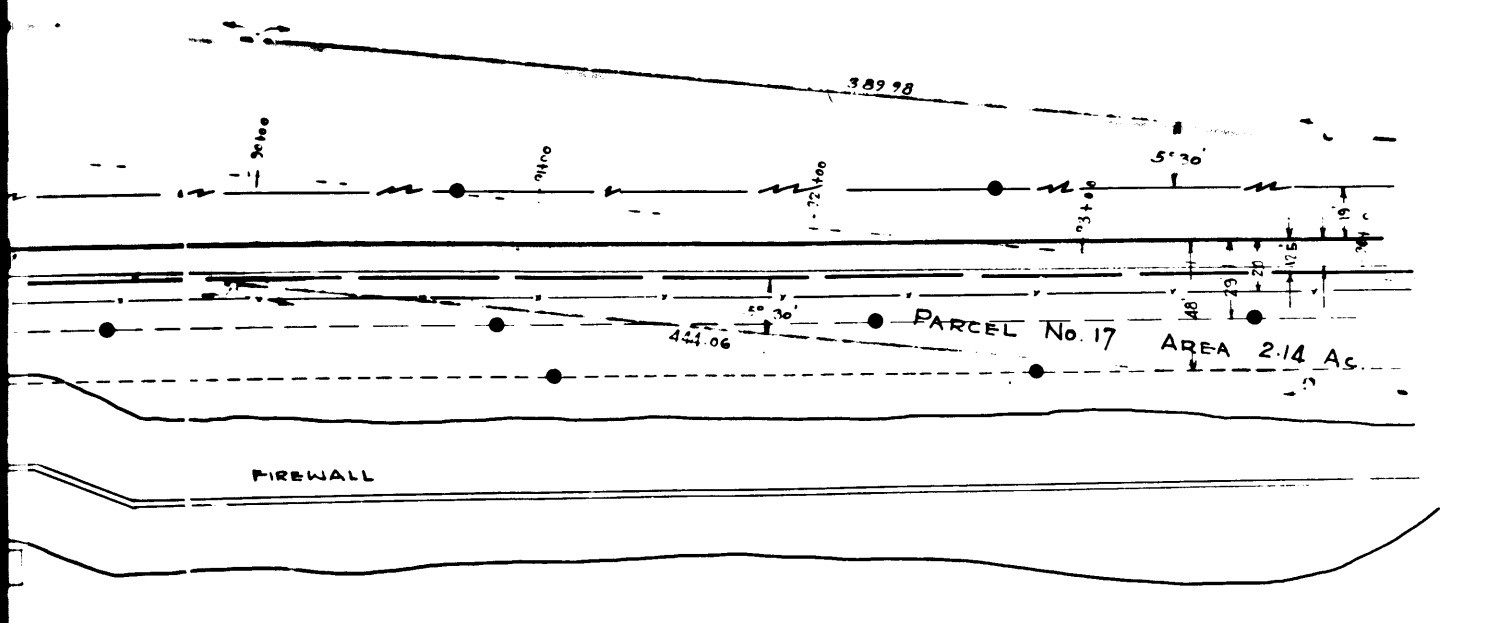
123
 M 330311
 SHEET 2 OF 6 SHEETS

SW 1/4 SEC. 7



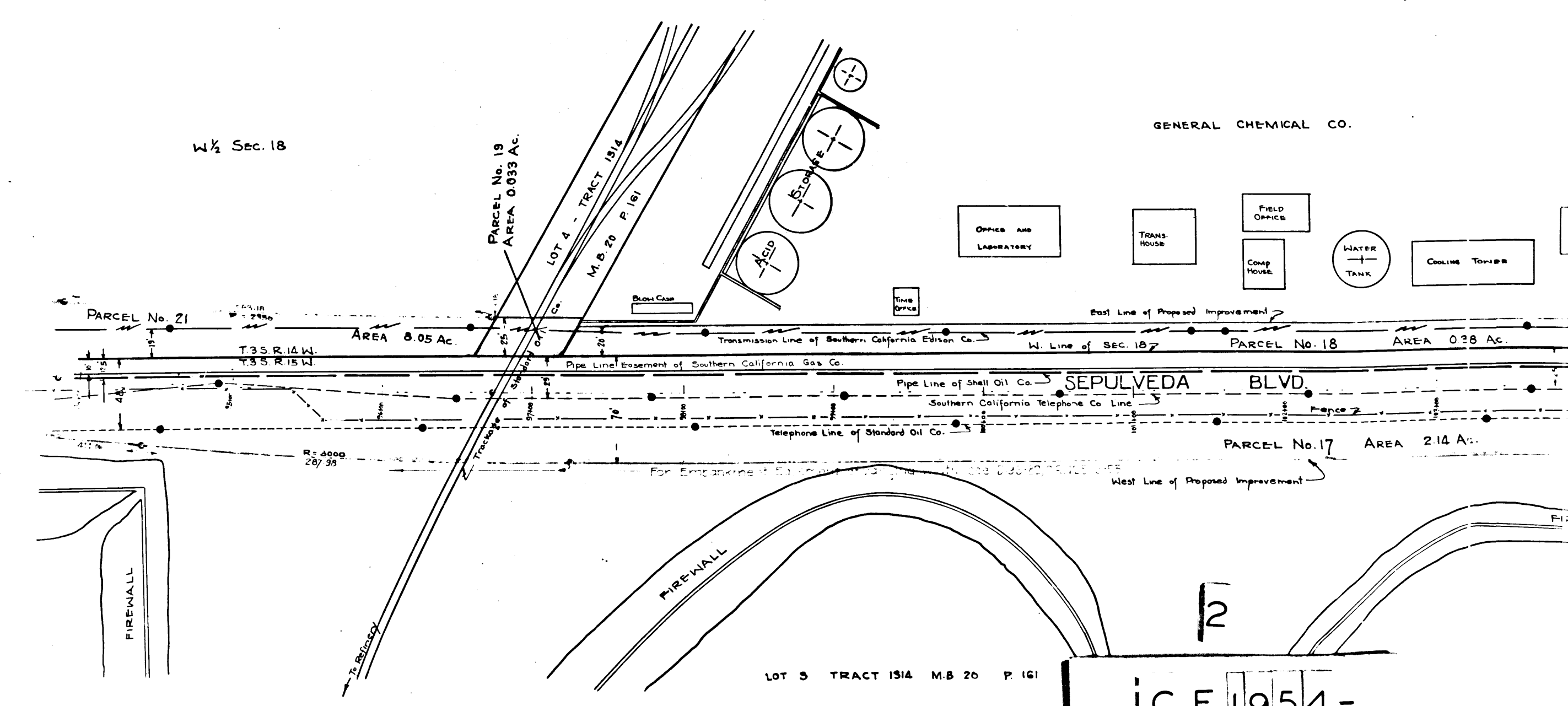
123

MAP
 SHOWING PROPERTY TO BE
 ACQUIRED FOR THE IMPROVEMENT OF
ARIZONA DRIVE SEPULVEDA BLVD.
 (STATE HIGHWAY NO. 60)
 IN MUNICIPAL IMPROVEMENT DISTRICT NO. 1
 CITY OF EL SEGUNDO, CALIF.
 SCALE: 1" = 50'



M 330311
 SHEET 5 OF 6 SHEETS.

W 1/2 Sec. 18



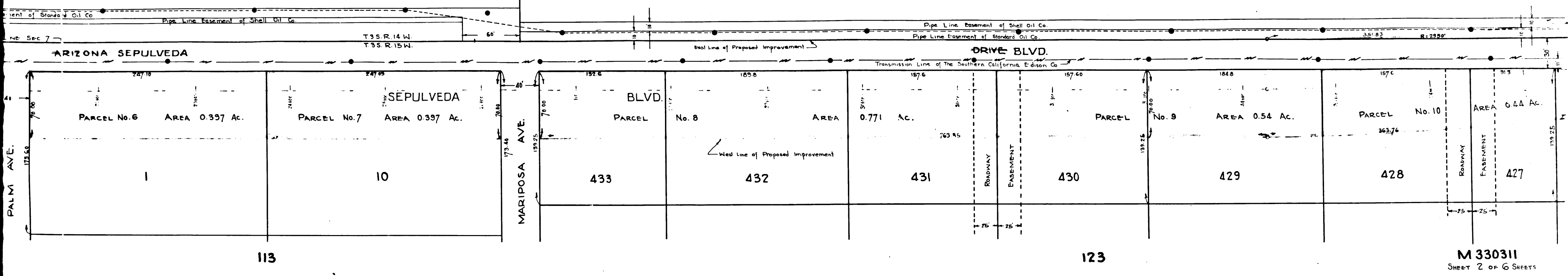
LOT 3 TRACT 1514 M.B. 20 P. 161
 C.F. 1954-

MAP
 SHOWING PROPERTY TO BE
 ACQUIRED FOR THE IMPROVEMENT OF
ARIZONA DRIVE SEPULVEDA BLVD.
 (STATE HIGHWAY NO. 60)
 IN MUNICIPAL IMPROVEMENT DISTRICT NO. 1
 CITY OF EL SEGUNDO, CALIF.
 SCALE 1" = 50'



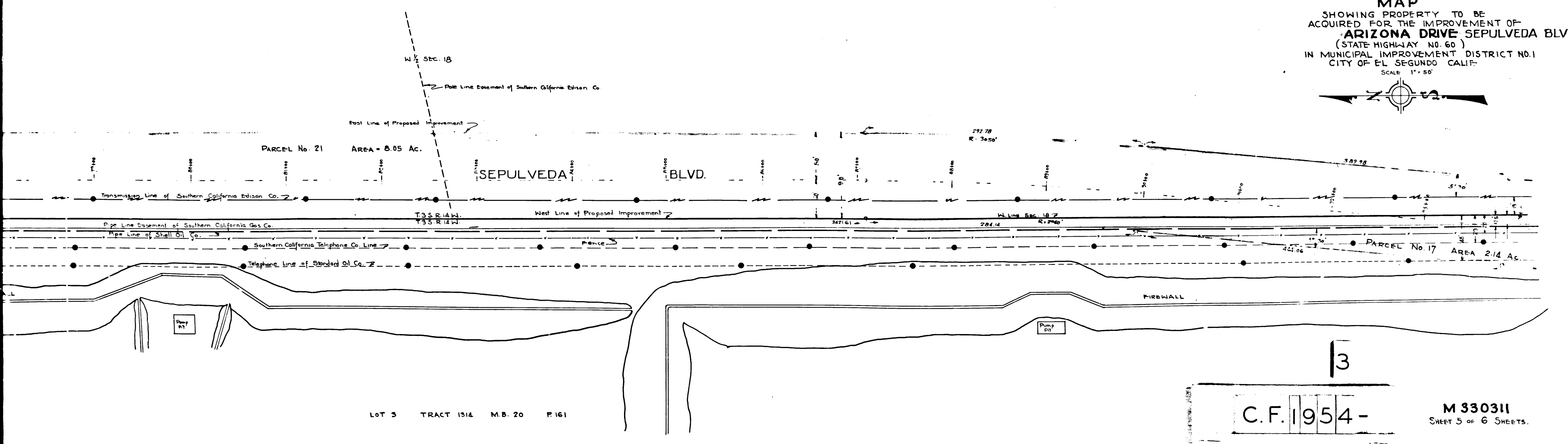
NW 1/4 SEC. 7

SW 1/4 SEC. 7



M 330311
 SHEET 2 OF 6 SHEETS

MAP
 SHOWING PROPERTY TO BE
 ACQUIRED FOR THE IMPROVEMENT OF
ARIZONA DRIVE SEPULVEDA BLVD.
 (STATE HIGHWAY NO. 60)
 IN MUNICIPAL IMPROVEMENT DISTRICT NO. 1
 CITY OF EL SEGUNDO, CALIF.
 SCALE 1" = 50'



LOT 3 TRACT 1314 M.B. 20 P. 161

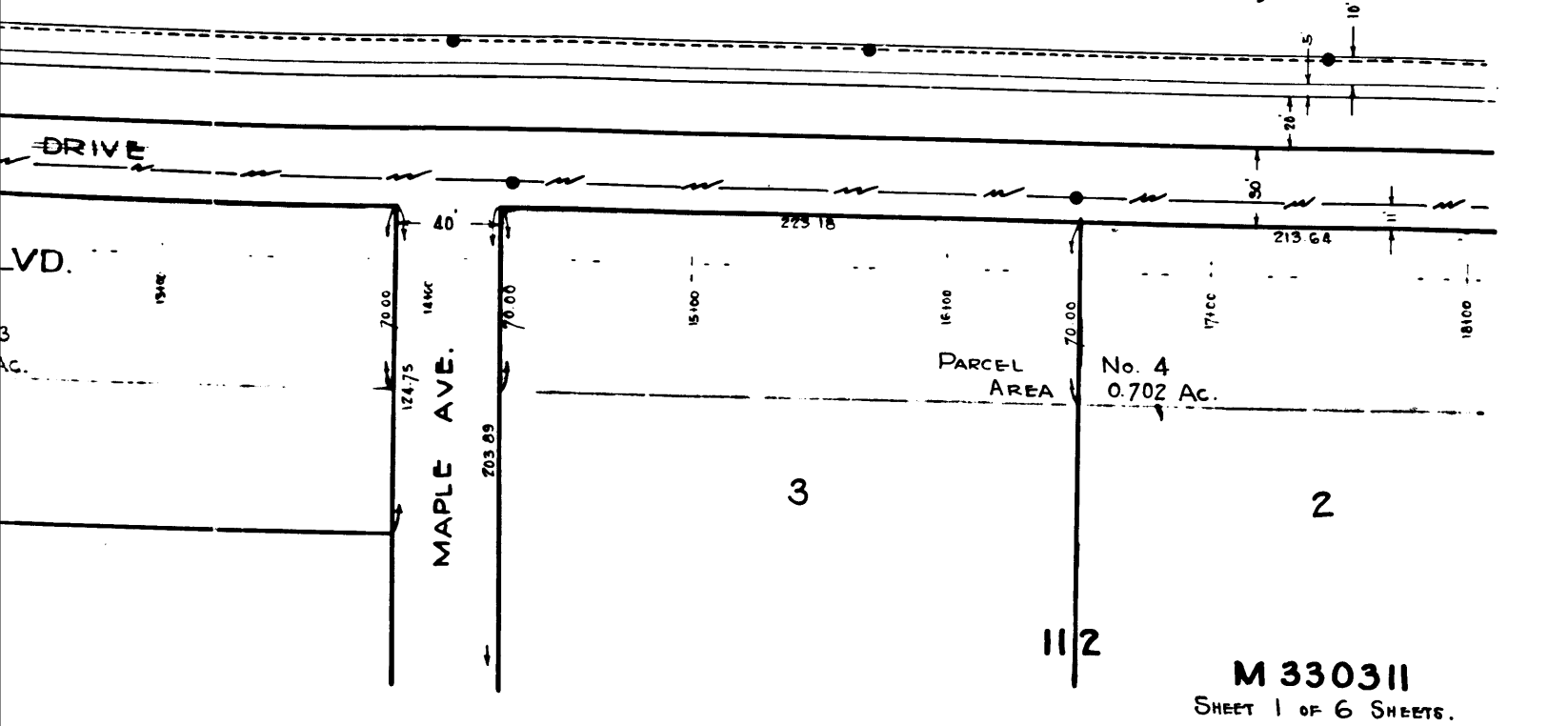
C.F. 1954-

M 330311
 SHEET 5 OF 6 SHEETS

MAP
 SHOWING PROPERTY TO BE
 ACQUIRED FOR THE IMPROVEMENT OF
ARIZONA DRIVE SEPULVEDA BLVD.
 (STATE HIGHWAY NO. 60)
 IN MUNICIPAL IMPROVEMENT DISTRICT NO. 1
 CITY OF EL SEGUNDO CALIF.
 SCALE 1" = 50'

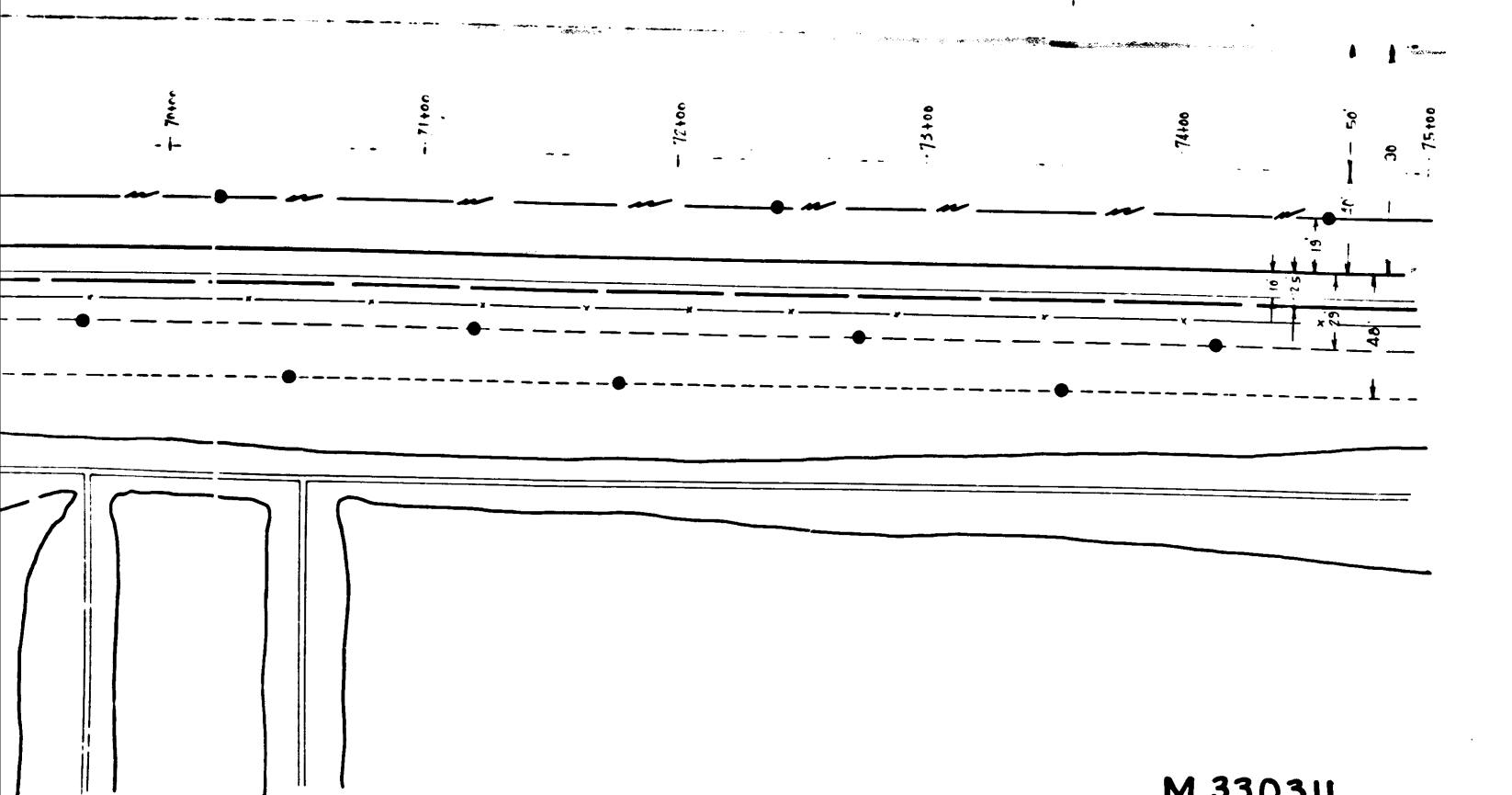


Approved April 8, 1933
[Signature]
 City Engineer.



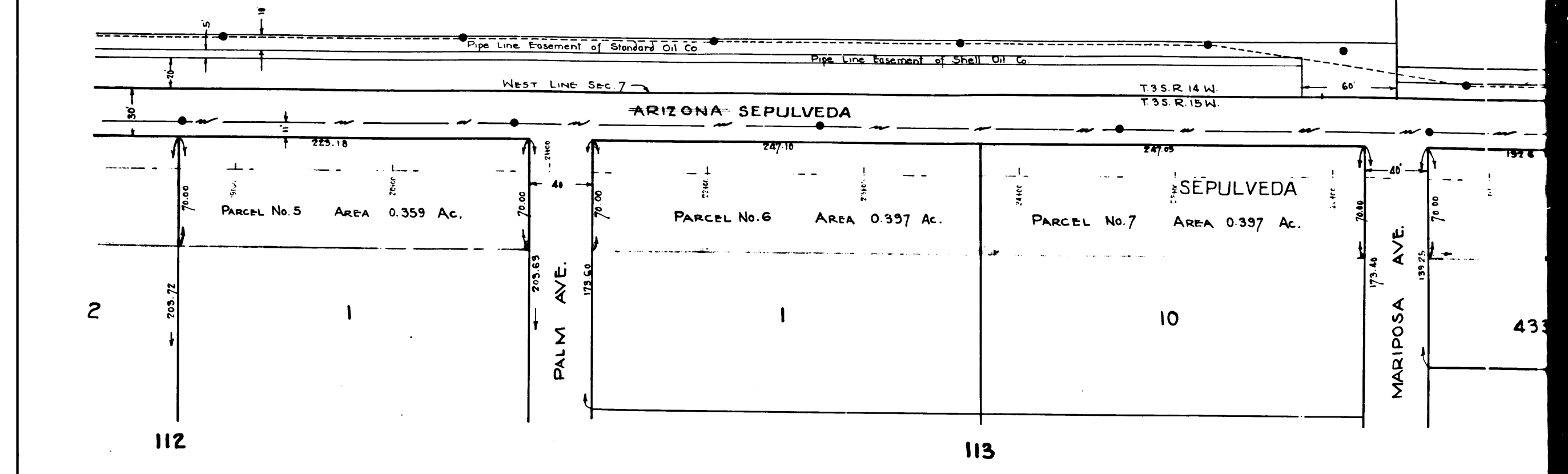
M 330311
 SHEET 1 OF 6 SHEETS.

MAP
 SHOWING PROPERTY TO BE
 ACQUIRED FOR THE IMPROVEMENT OF
ARIZONA DRIVE SEPULVEDA BLVD.
 (STATE HIGHWAY NO. 60)
 IN MUNICIPAL IMPROVEMENT DISTRICT NO. 1
 CITY OF EL SEGUNDO CALIF.
 SCALE 1" = 50'



M 330311
 SHEET 4 OF 6 SHEETS.

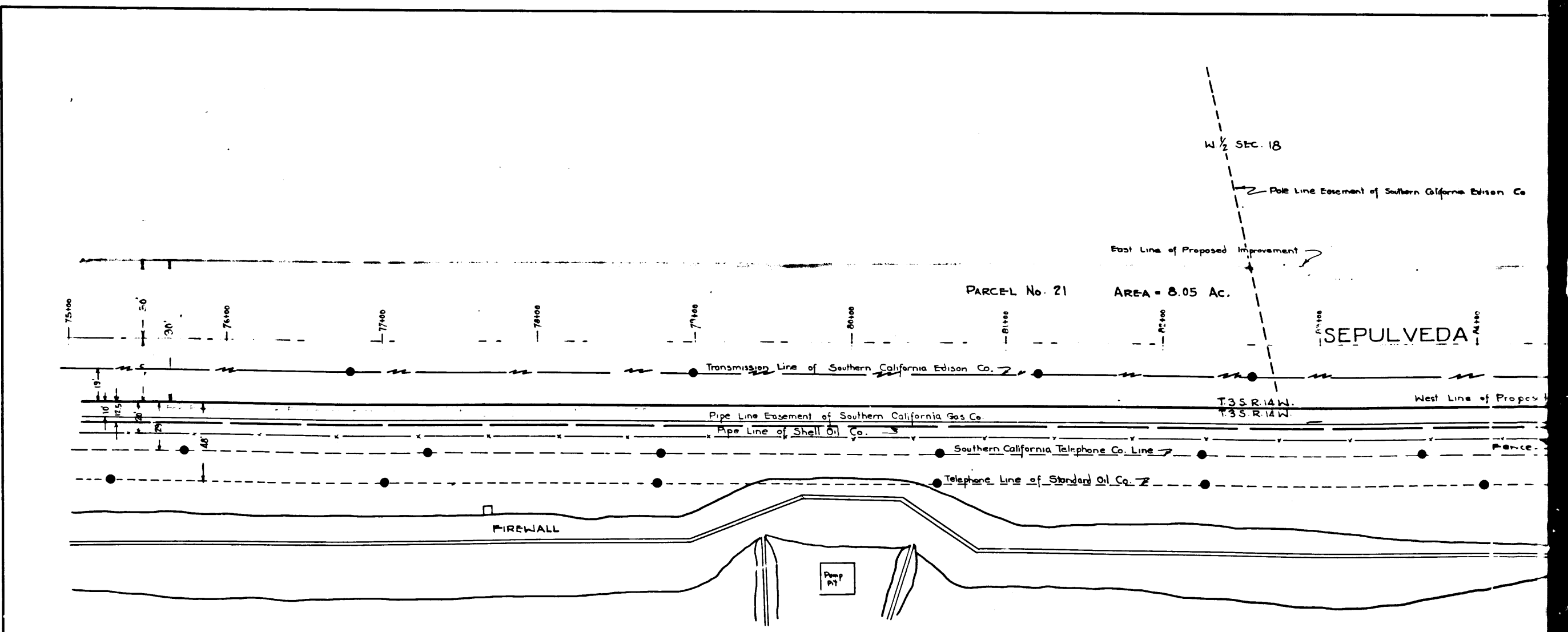
NW 1/4 SEC. 7



112

113

W 1/2 SEC. 18

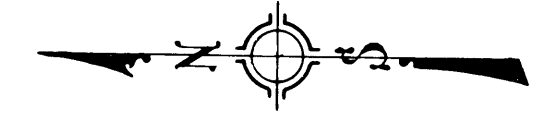


4

C.F. 1954-

LOT 3 TRACT 1314 M.B. 20 P. 161

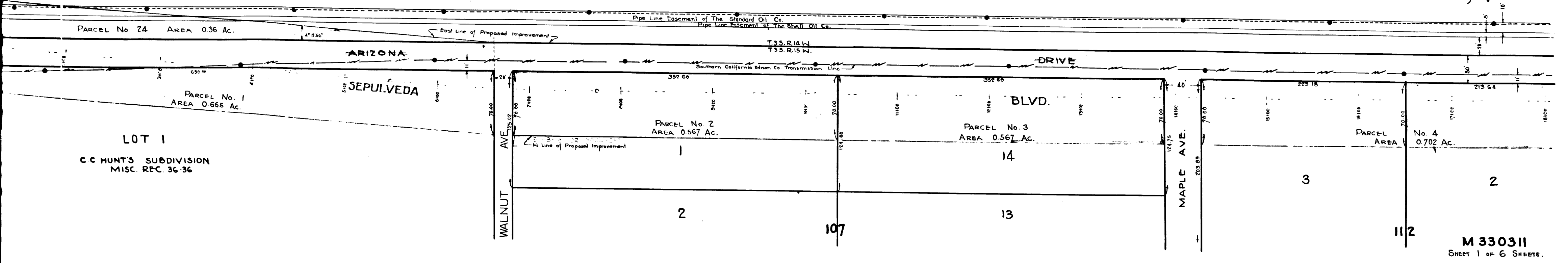
MAP
 SHOWING PROPERTY TO BE
 ACQUIRED FOR THE IMPROVEMENT OF
ARIZONA DRIVE SEPULVEDA BLVD.
 (STATE HIGHWAY NO. 60)
 IN MUNICIPAL IMPROVEMENT DISTRICT NO. 1
 CITY OF EL SEGUNDO CALIF.
 SCALE 1" = 50'



Approved April 1, 1933
[Signature]
 City Engineer

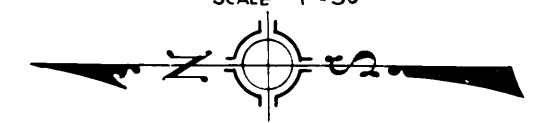
LEGEND
 Dedicated Streets shaded
 Roadway Easements shaded
 Property to be acquired outlined

N.W. 1/4 SEC. 7

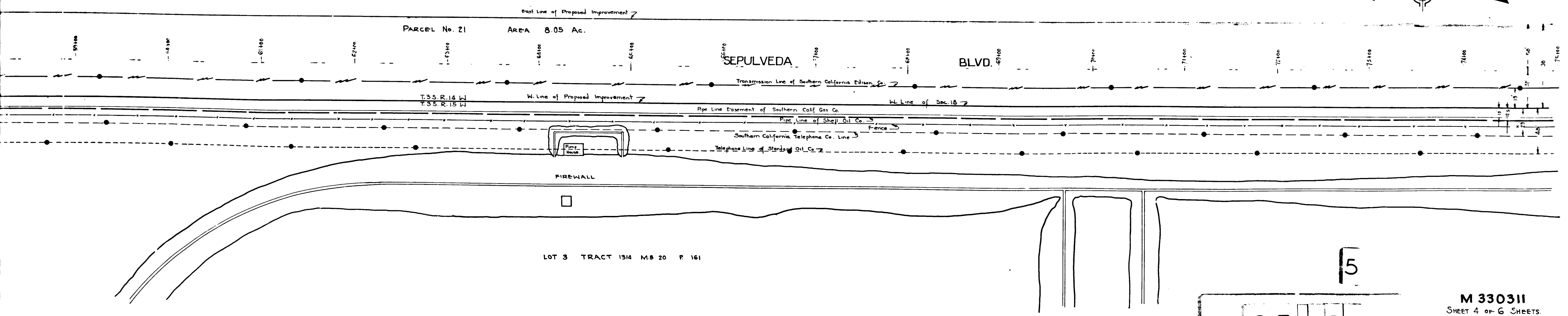


M 330311
 SHEET 1 OF 6 SHEETS.

MAP
 SHOWING PROPERTY TO BE
 ACQUIRED FOR THE IMPROVEMENT OF
ARIZONA DRIVE SEPULVEDA BLVD.
 (STATE HIGHWAY NO. 60)
 IN MUNICIPAL IMPROVEMENT DISTRICT NO. 1
 CITY OF EL SEGUNDO CALIF.
 SCALE 1" = 50'



W 1/2 SEC. 18



M 330311
 SHEET 4 OF 6 SHEETS.

C.F. 1954-

VERMICO INDUSTRIAL
 10TH 957
 14.05
 VERMICO INDUSTRIAL

