

Superior Court Case No. 359187
 Suit for Condemnation -
 Filed June 28, 1933
 City of Monterey Park, Plff.
 Vs.
 Inez M. Pethybridge et al. Defendants
*Interlocutory judgment as per
 map, rendered Dec. 23, 1933.
 Judge, Bk. 872-387.*
 Final judgment in favor of Plff. as per map
 rendered Jan. 16, 1934
 D93-96, O.R. 12494-375
 Index 36

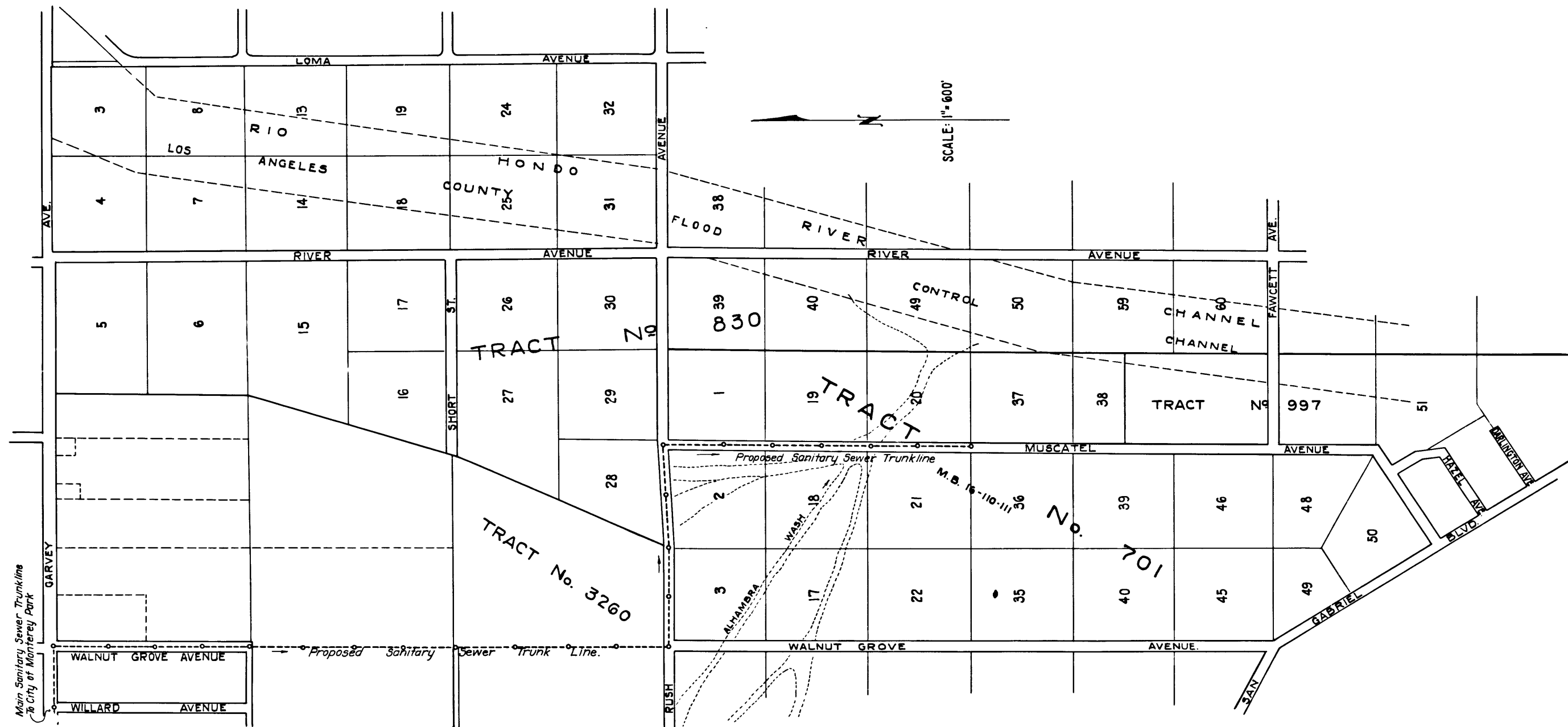


EXHIBIT "B"
 CITY OF MONTEREY PARK
 CHELLISON, City Engineer June 1933

C.F. 1956 -