

A-0350

A-0350

A-0350

RETURN TO CIVIL ENGINEER'S OFFICE
CITY OF LOS ANGELES
PROPERTY OF THE

A-0350

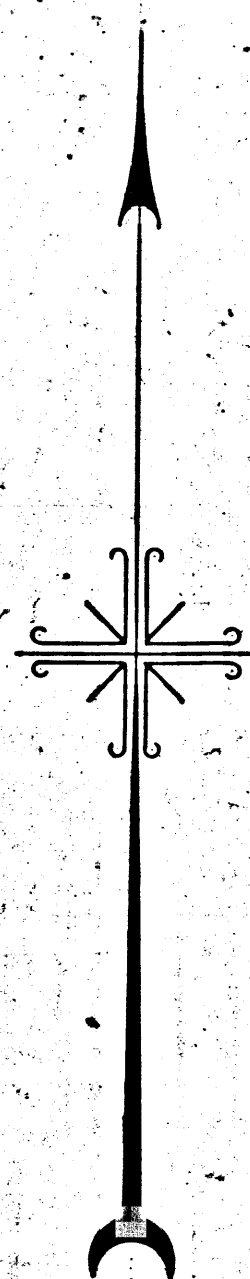
KINGMAN AVE INGRESS AND EGRESS,
FILE NO. 453-33 CHARGE NO. E.D. 32898.

MAP
 SHOWING CERTAIN REAL PROPERTIES
 TO AND FROM WHICH
 CERTAIN RIGHTS OF INGRESS AND EGRESS ARE TO BE CONDEMNED
 FOR PUBLIC STREET PURPOSES
 IN CONNECTION WITH THE PROPOSED IMPROVEMENT OF
 ENTRADA DRIVE,
 A PORTION OF
 KINGMAN AVENUE
 AND A PORTION OF
 SEVENTH STREET.

AND CERTAIN ADJACENT PUBLIC STREETS AND ALLEYS
 BETWEEN
 SAN LORENZO STREET
 IN THE CITY OF LOS ANGELES
 AND
 ADELAIDE PLACE
 IN THE CITY OF SANTA MONICA,

PARTLY IN THE CITY OF LOS ANGELES AND
 PARTLY IN THE CITY OF SANTA MONICA, CALIF.
 ALL IN ACCORDANCE WITH ORDINANCE NO. 72727.

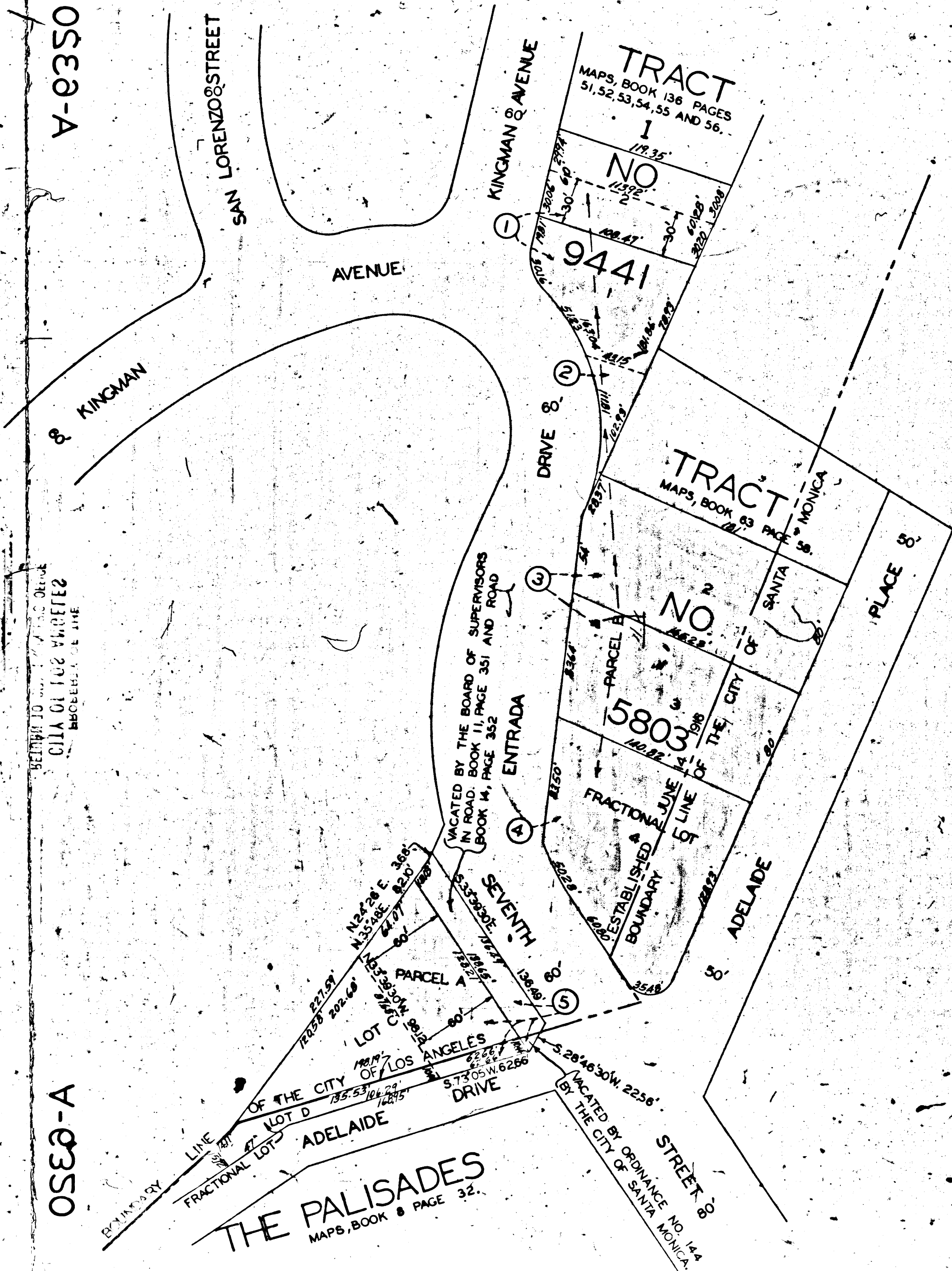
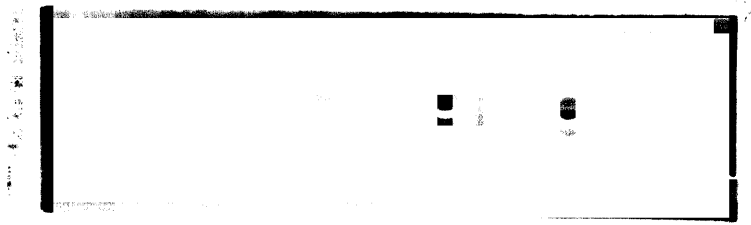
J.J. JESSUP, CITY ENGINEER, JULY 1933.
 SCALE 1 INCH = 50 FEET.



Superior Court Case No. 362934
 Suit for Condemnation
 Filed Sept. 18, 1933
 City of Los Angeles, Plaintiff
 Vs
 Newton S. Ganay, et al., Defendants
 Note: The purpose of this action
 is to condemn rights of ingress
 and egress only.

Interlocutory judgment as
 per map, rendered Feb. 25, 1935
 Judg. Bk. 833-343

A-0320



BEING TO THE CITY OF LOS ANGELES
 RECORDS & EVIDENCE DIVISION

THE PALISADES
 MAPS, BOOK 8 PAGE 32.