

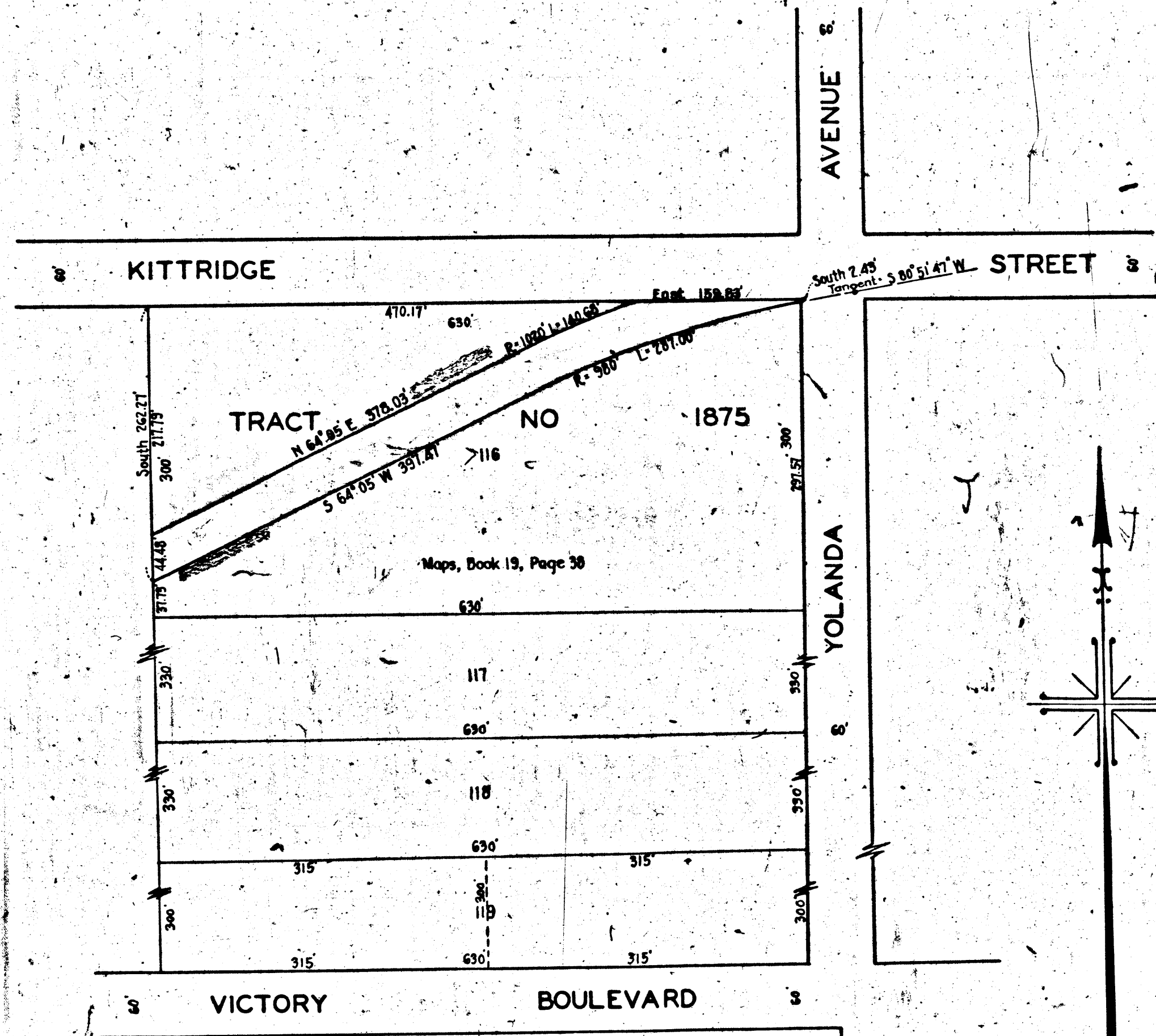
V-0335

V-0335

RETURN TO CIVIL ENGINEER'S OFFICE
CITY OF LOS ANGELES
SPOONER BLDG.

A-0335

A-0335



MAP
SHOWING CERTAIN REAL PROPERTY
TO BE CONDEMNED FOR
PUBLIC FLOOD CONTROL PURPOSES
FOR WIDENING DEEPENING AND STRAIGHTENING
THE CHANNEL OF THE
LOS ANGELES RIVER
BETWEEN THE INTERSECTION OF
KITTRIDGE STREET
WITH
YOLANDA AVENUE

AND A POINT APPROXIMATELY SEVEN HUNDRED (700) FEET
SOUTHWESTERLY THEREFROM
IN THE CITY OF LOS ANGELES CALIF.
IN ACCORDANCE WITH ORDINANCE NO. 73063
LLOYD ALDRICH CITY ENGINEER NOVEMBER 1933

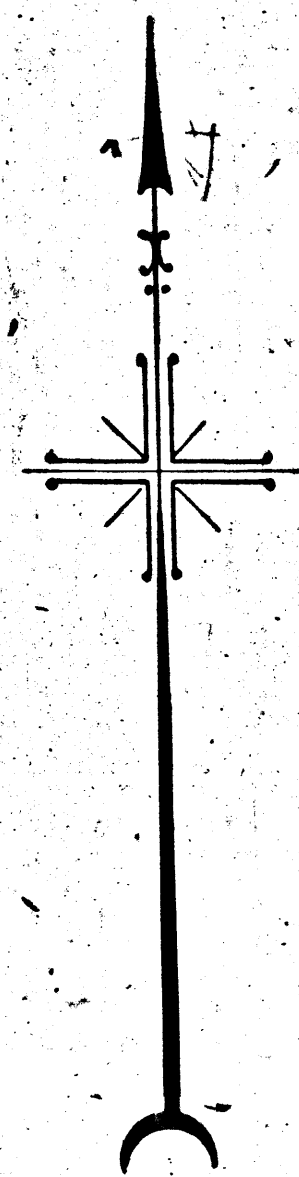
SCALE 1 INCH=100 FEET

Note: Property to be condemned for public flood control
purposes shown colored red
Dotted lines and dimensions show property holdings in those
cases where they differ from the recorded subdivisions

Superior Court Case No. 366545
Suit for Condemnation
Filed Dec. 5, 1933
City of Los Angeles, Plaintiff
Vs
Ben F. Rosenberg, et al., Def.

Order authorizing Pltff. to take
immediate possession rendered
Dec. 8, 1933.
Final Judgment in favor of Pltff. as
per map, rendered July 8th, 1935.

E: 6-60, O.R. 13484-286.



INDEX 57

A-6332

