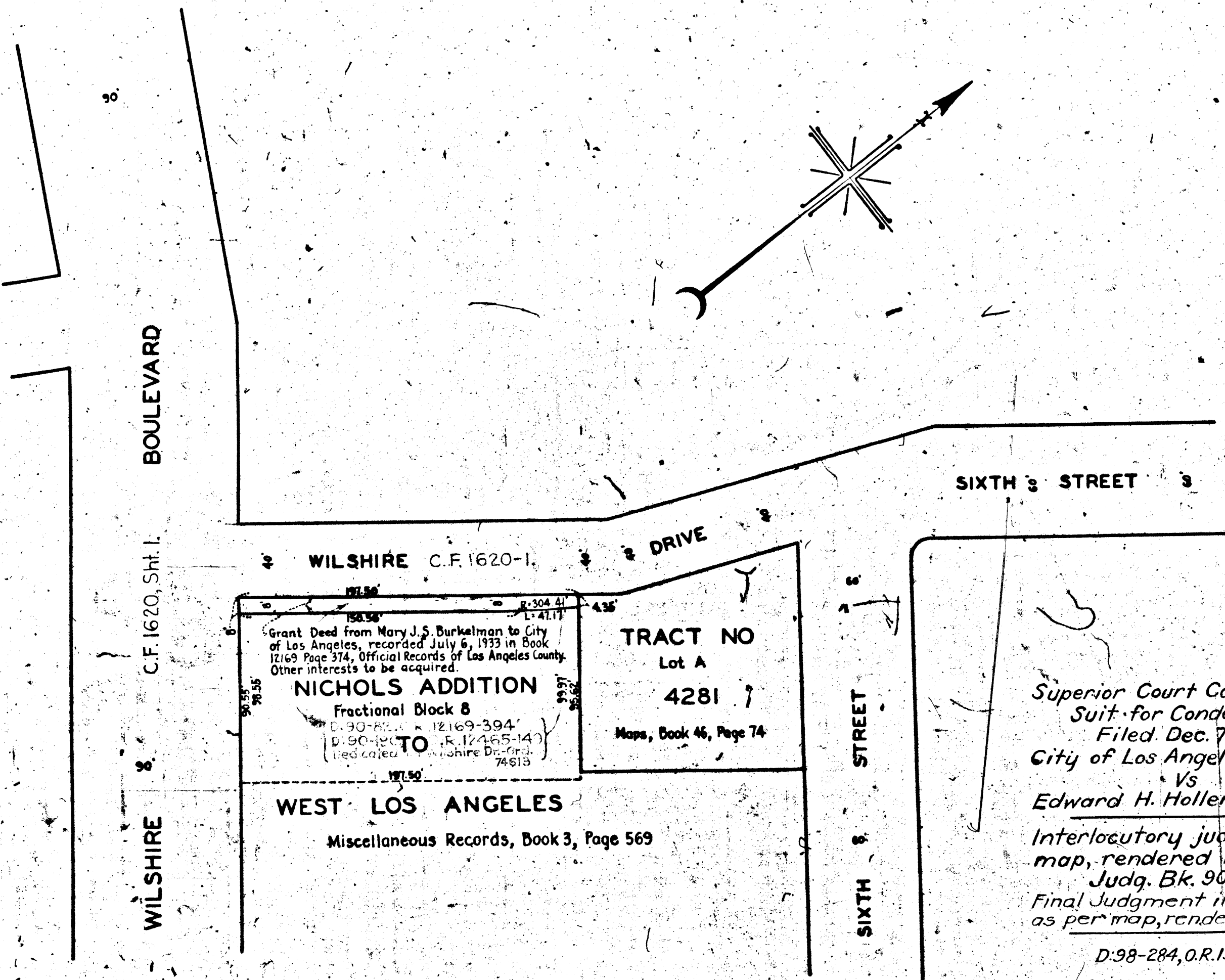


A-6333

A-6333

RETURN TO CITY ENGINEER'S OFFICE
CITY OF LOS ANGELES
PROPERTY OF THE

RETURN TO CITY ENGINEER'S OFFICE
CITY OF LOS ANGELES
PROPERTY OF THE



MAP
 SHOWING CERTAIN REAL PROPERTY
 TO BE CONDEMNED FOR
 THE WIDENING OF
WILSHIRE DRIVE
 ALONG THE SOUTHEASTERLY LINE THEREOF
 FROM A POINT APPROXIMATELY TWO HUNDRED 200 FEET
 NORTHEASTERLY OF THE NORTHEASTERLY LINE OF
WILSHIRE BOULEVARD

TO
WILSHIRE BOULEVARD
 IN THE CITY OF LOS ANGELES, CALIF.
 IN ACCORDANCE WITH ORDINANCE NO. 73220
 LLOYD ALDRICH CITY ENGINEER - NOVEMBER 1933

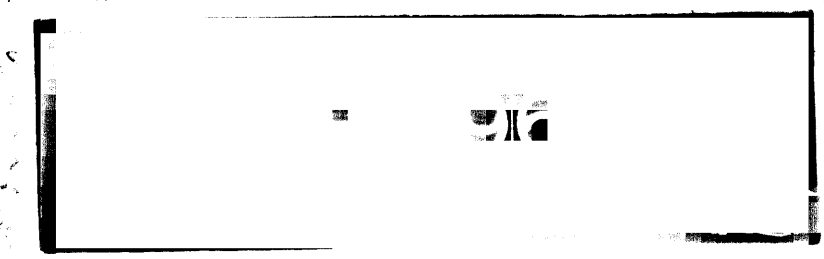
SCALE 1 INCH = 50 FEET

Note: Land to be condemned shown colored red.
Dotted lines and dimensions show property holdings in those cases where they differ from the recorded subdivisions.

Index 3

*Superior Court Case No. 36667
 Suit for Condemnation
 Filed Dec. 7, 1933
 City of Los Angeles, Plaintiff
 Vs
 Edward H. Hollenbeck, et al, Def.
 Interlocutory judgment as per
 map, rendered Feb. 26, 1935.
 Judg. Bk. 901-302.
 Final Judgment in favor of Pltff.
 as per map, rendered Mar. 9, 1935
 D:98-284, O.R. 13360-23.*

A-6333



A-6333

A-6333