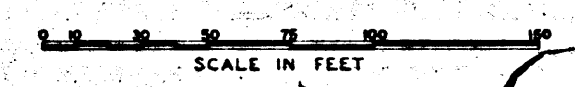


MAP
 SHOWING LAND TO BE CONDEMNED
 FOR THE
 OPENING AND/OR LAYING OUT OF A NEW STREET TO BE KNOWN AS
RAMONA BOULEVARD
 BETWEEN STATE STREET AT RAMONA BOULEVARD AND ALISO STREET
 AT A POINT APPROXIMATELY 312 FEET WESTERLY OF PLEASANT AVENUE
 ALSO FOR THE
 WIDENING AND/OR LAYING OUT OF
ALISO STREET
 BETWEEN A POINT APPROXIMATELY 312 FEET WESTERLY OF PLEASANT AVENUE AND MISSION ROAD
 ALSO SHOWING CERTAIN REAL PROPERTIES
 TO AND FROM WHICH
 CERTAIN RIGHTS OF INGRESS AND EGRESS
 AND CERTAIN OTHER RIGHTS AND EASEMENTS APPURTENANT TO SAID REAL PROPERTIES
 IN AND TO THE ABOVE MENTIONED PUBLIC STREETS
 AND CERTAIN ADJACENT STREETS AND ALLEYS
 ARE TO BE CONDEMNED FOR PUBLIC STREET PURPOSES
 ALSO SHOWING CERTAIN EASEMENTS AND RIGHTS OF WAY TO BE CONDEMNED
 IN CONNECTION WITH PUBLIC STREET PURPOSES FOR THE EXTENSION OF
 CERTAIN SLOPES OF FILLS AND/OR CUTS ALL IN CONNECTION WITH THE PROPOSED IMPROVEMENT OF
RAMONA BOULEVARD
 AS PROPOSED TO BE OPENED AND/OR LAID OUT

IN THE
CITY OF LOS ANGELES, CALIFORNIA

LLOYD ALDRICH—CITY ENGINEER DECEMBER 1933

ALL IN ACCORDANCE WITH ORDINANCE NO. 73493



For dedication of land for Aliso St. see Ord. 75181.

RAMONA
 C.F. 1812.
BOULEVARD
 McALLISTER
STREET

Index to
 Superior Court Case No. 371498
 Suit for Condemnation
 Filed Mar. 27, 1934
 City of Los Angeles, Plaintiff
 Vs
 Jean S. Edgar, et al, Defendants.

Order authorizing Pltff. to take immediate possession of parcels 1A, 1B, 2A, 2B, 8A, 8B, 9A, 9B, 14A, 14B, 14C, 15A, 15B, 15C, 16A, 16B, 16C, 17A, 17B, 18A, 18B, 18C, 20A, 20B, 20C, 21A, 21B, 21C, 22A, 22B, 22C, 23A, 23B, 23C, 24C, 25C, 26A, 26B, 26C, 27A, 27B, 27C, 28A, 28B, 28C, 29A, 29B, 29C, 30A, 30B, 30C, 32A, 32B, 32C, 33C, 34A, 34B, 34C, 35B, 36B, 37B, 39B, 39C, 40A, 42A, 43A, 44A, 45A, 46A and 47A, rendered Mar. 29, 1934.
 Interlocutory judgment as to parcels 34A, 34B and 34C, rendered Jan. 21, 1938. J. B. 989-309.
 Interlocutory judgment as to parcels 30A, 30B, 30C, 32A, 32B, 32C, 33C, 35B, 36B, 37B, 39B, 39C, and 40A, rendered July 8, 1938. J. B. 1009-113.
 Final Judgment in favor of Plaintiff as to Parcel 33-C rendered February 14, 1935.

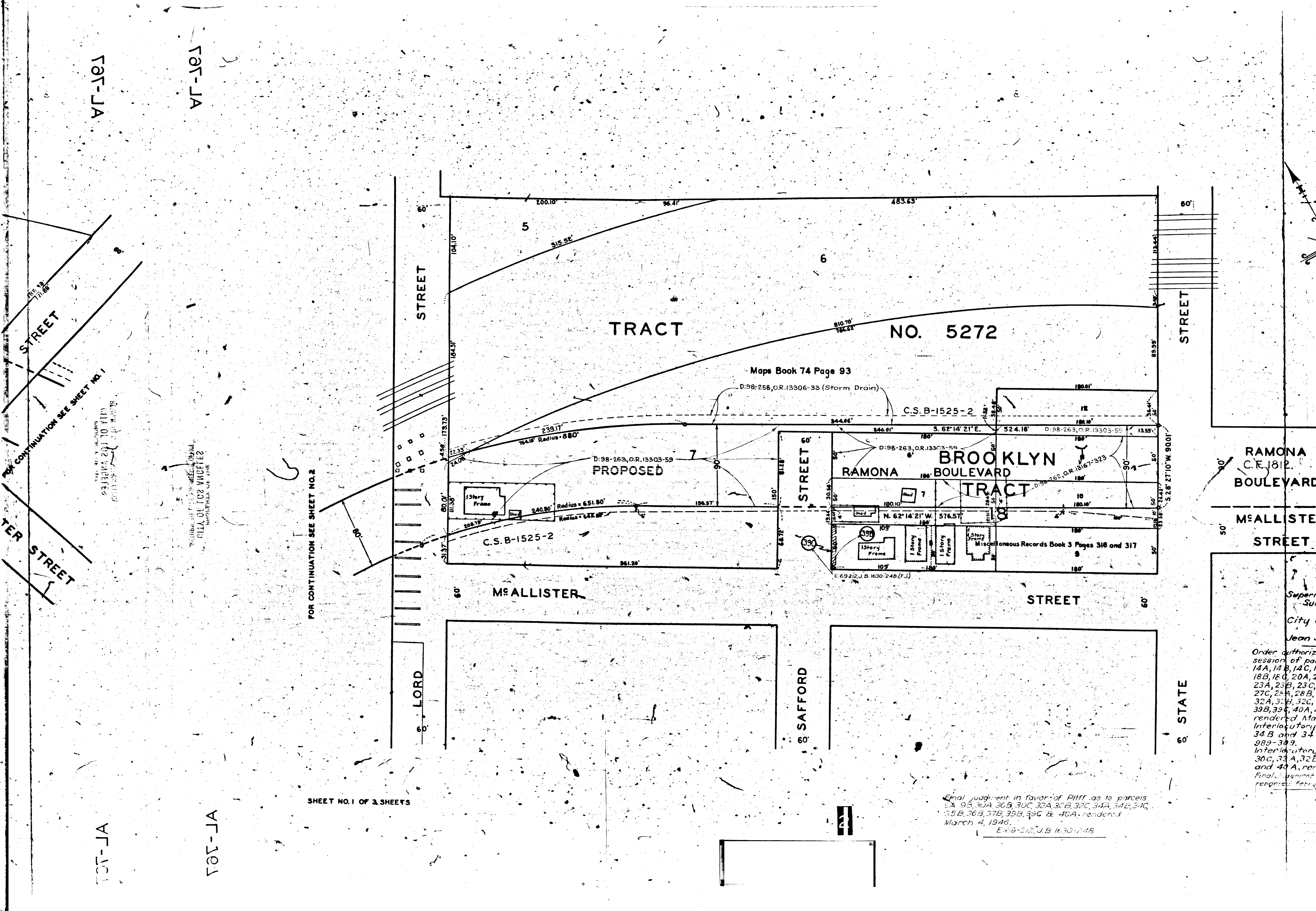
E-28-206, O.R. 16400-232.

Court dismissed as to Parcels 30A, 30B, 30C, 32A, 32B, 32C, 34A, 34B, 34C, 35B, 36B, 37B, 39B, 39C, and 40A, rendered July 8, 1938. J. B. 1009-113.

NOTES:
 LAND TO BE CONDEMNED FOR PUBLIC STREET PURPOSES SHOWN COLORED RED.
 PROPERTIES TO AND FROM WHICH CERTAIN RIGHTS OF INGRESS AND EGRESS ARE TO BE CONDEMNED FOR PUBLIC STREET PURPOSES SHOWN COLORED YELLOW.
 EASEMENTS AND RIGHTS OF WAY TO BE CONDEMNED IN CONNECTION WITH PUBLIC STREET PURPOSES FOR THE EXTENSION OF FILLS AND/OR CUTS SHOWN HATCHED THUS [diagonal lines].
 DOTTED LINES AND DIMENSIONS SHOW PROPERTY HOLDINGS IN THOSE CASES WHERE THEY DIFFER FROM RECORDED SUBDIVISIONS.
 FIGURES AND/OR LETTERS IN CIRCLES INDICATE THE PARCELS AS SET FORTH IN PARAGRAPH XI OF THE COMPLAINT.

Final judgment in favor of Pltff. as to parcels 9A, 9B, 30A, 30B, 30C, 32A, 32B, 32C, 34A, 34B, 34C, 35B, 36B, 37B, 39B, 39C & 40A, rendered March 4, 1946.
 E-69-212, J.B. 1630-218

AL-767



FOR CONTINUATION SEE SHEET NO. 1

FOR CONTINUATION SEE SHEET NO. 2

SHEET NO. 1 OF 3 SHEETS

C.S. B-1525-2

PROPOSED

BROOKLYN
RAMONA BOULEVARD
TRACT

RAMONA
C.F. 1812
BOULEVARD

M^cALLISTER
STREET

STREET

M^cALLISTER

LORD

SAFFORD

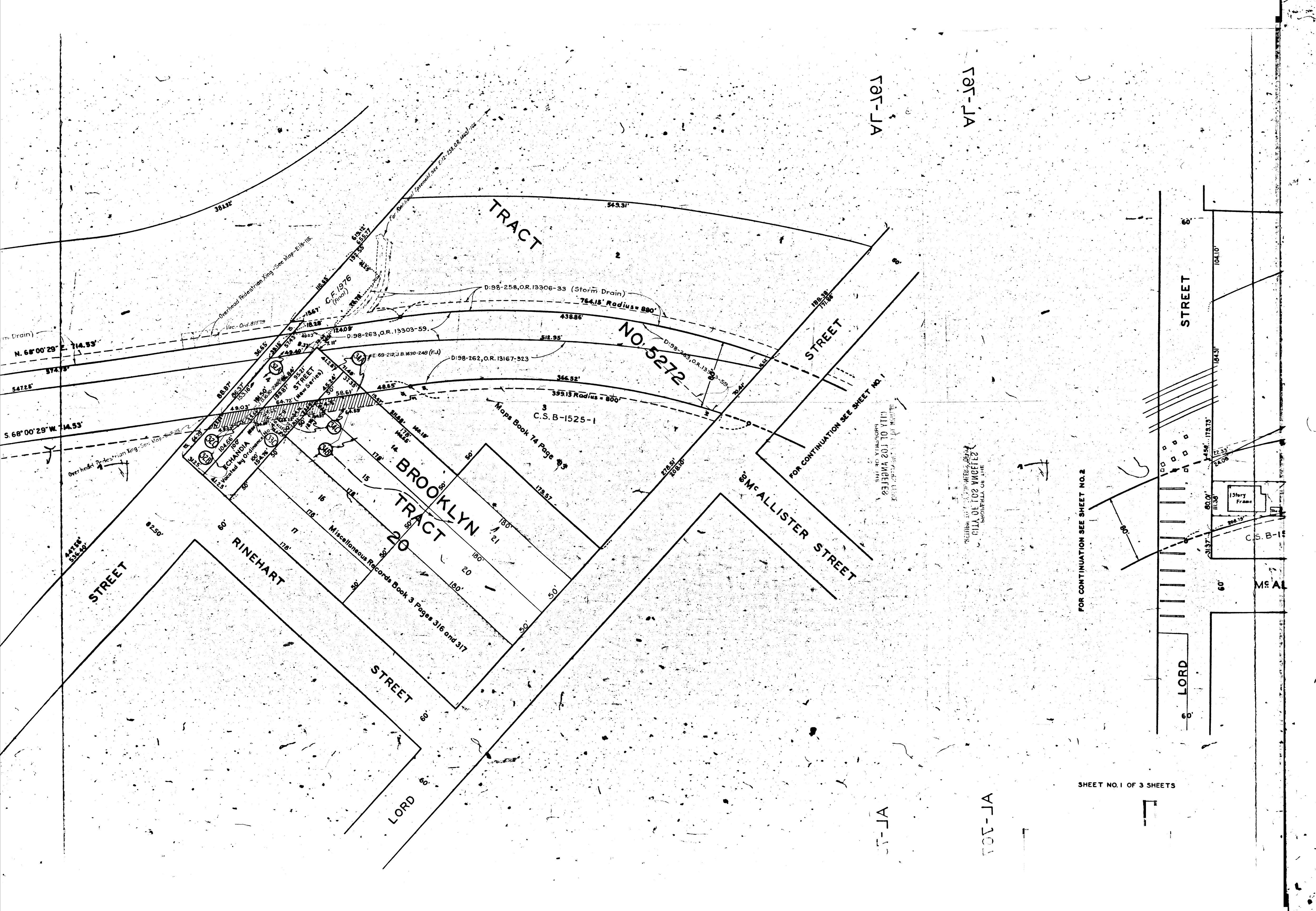
STATE

Final judgment in favor of Plff. as to parcels
9A, 9B, 30A, 30B, 30C, 32A, 32B, 32C, 34A, 34B, 34C,
35B, 36B, 37B, 39B, 39C & 40A, rendered
March 4, 1946.
E:68-212, J.B. 1630-248

Ind. Superior Court
Suit for Co.
Filed in
City of Los A.

Jean S. Edgar
Order authorizing Plff.
session of parcels 1A,
14A, 14B, 14C, 15A, 15B,
18B, 18C, 20A, 20B, 20C,
23A, 23B, 23C, 24C, 25C,
27C, 28A, 28B, 28C, 29A,
32A, 32B, 32C, 33C, 34A,
39B, 39C, 40A, 42A, 43A,
rendered Mar. 29, 1935.
Interlocutory judgment
34B and 34C, rendered
989-309.
Interlocutory judgment
30C, 31A, 32B, 32C, 33
and 40A, rendered
Final judgment in favor of
rendered February 14, 1935.

E:28-207



707-JA

707-JA

707-JA

707-JA

FOR CONTINUATION SEE SHEET NO. 2

FOR CONTINUATION SEE SHEET NO. 1

DEPARTMENT OF CITY PLANNING
CITY OF LOS ANGELES
BUREAU OF THE

PREPARED BY THE BUREAU OF THE
CITY OF LOS ANGELES
BUREAU OF THE

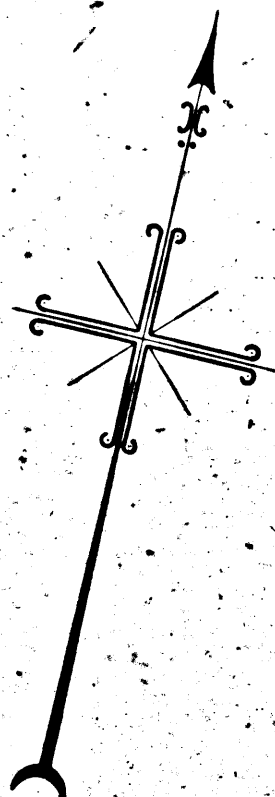
LORD

STREET

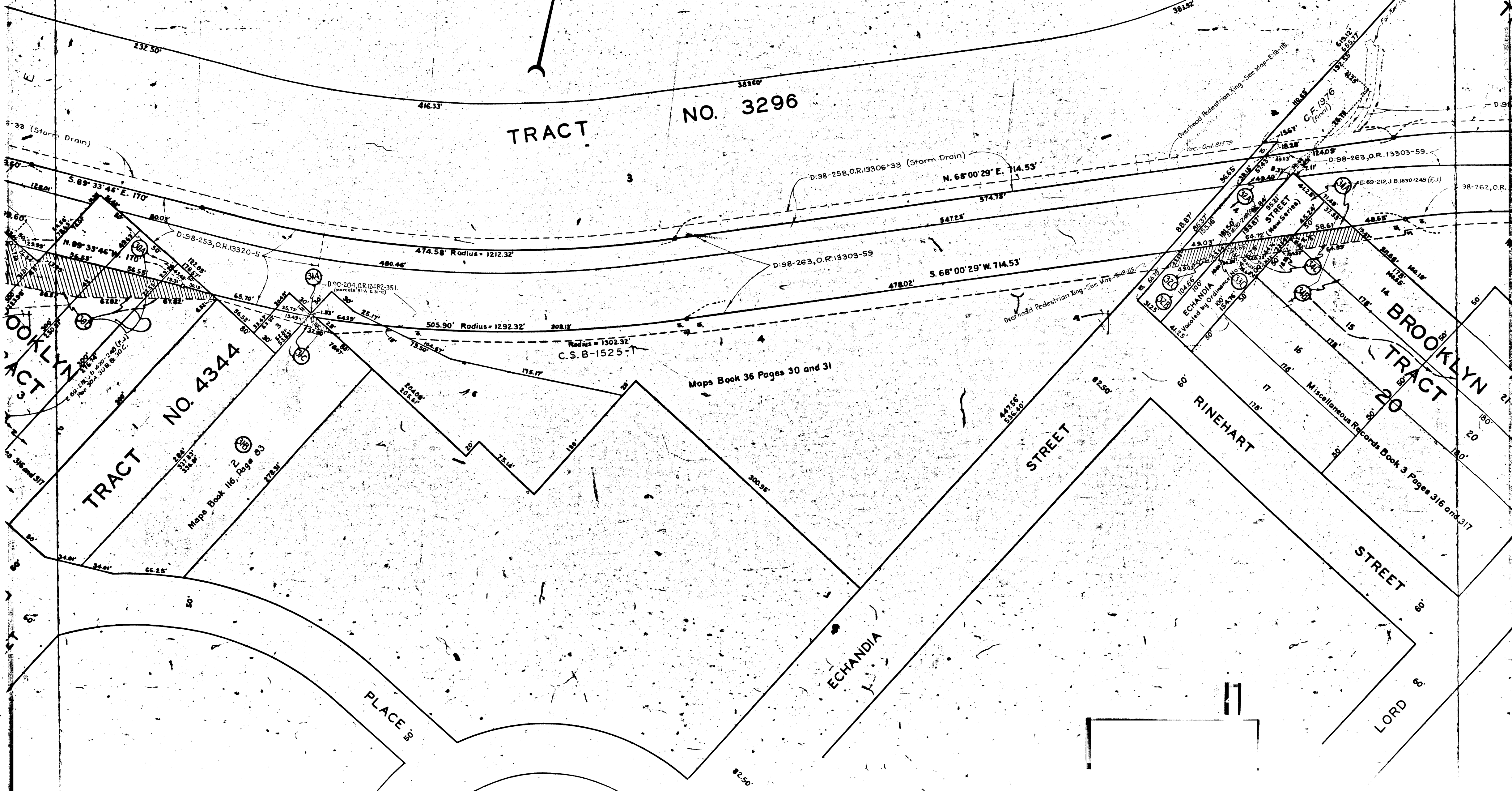
MEAL

History Frame

C.S. B-1



TRACT NO. 3296



3-33 (Storm Drain)

D:98-258, O.R. 13306+33 (Storm Drain)

Overhead Pedestrian King - See Map E-18-116
Vac. Ord. 81579

D:98-263, O.R. 13303-59

$S. 89^{\circ}33'46'' E. 170'$

D:98-253, O.R. 13320-5

D:90-204, O.R. 12482-351
(parcels 31A & 31C)

Radius = 1302.32'
C.S.B-1525-1

Maps Book 36 Pages 30 and 31

Overhead Pedestrian King - See Map E-18-116

ECHANDIA
Allocated by Ordinance No. 15478
15478 50'

Miscellaneous Records Book 3 Pages 316 and 317

TRACT NO. 3296

TRACT NO. 4344

Maps Book 116, Page 83

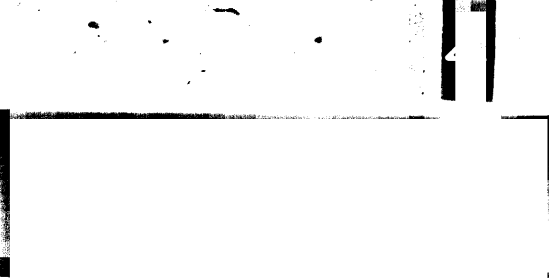
RINEHART STREET

TRACT NO. 20

LORD STREET

ECHANDIA STREET

PLACE



T05-JA

T05-JA

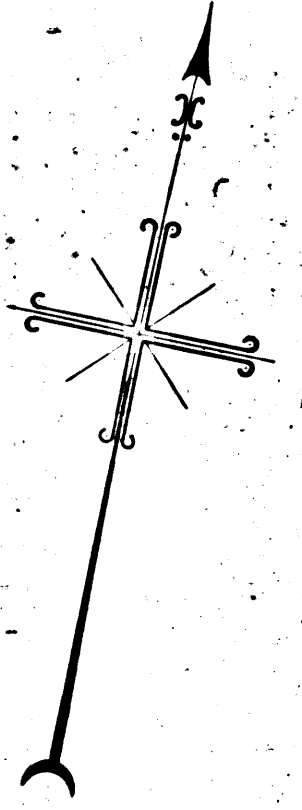
RETURN TO CITY ENGINEER'S OFFICE
CITY OF LOS ANGELES
BUREAU OF THE
RECORDS OF THE

FOR CONTINUATION SEE SHEET NO. 3

CITY ENGINEER'S OFFICE
CITY OF LOS ANGELES
BUREAU OF THE

T05-JA

SHEET NO. 2 OF 3 SHEETS



SHEET NO. 2

TRACT

ALFRED MOORE'S SUBDIVISION
TO THE BROOKLYN TRACT

BROOKLYN TRACT

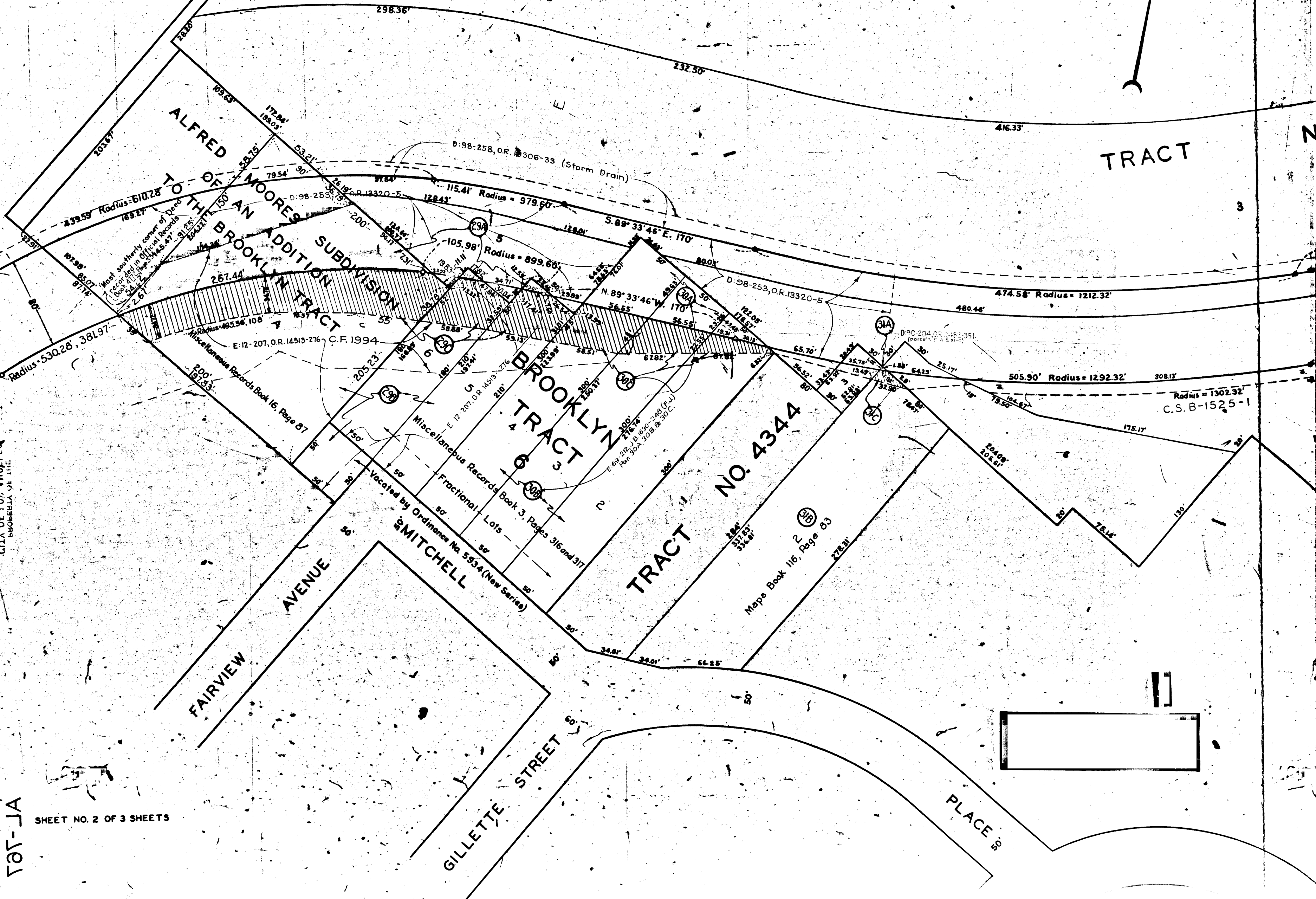
TRACT NO. 4344

FAIRVIEW AVENUE

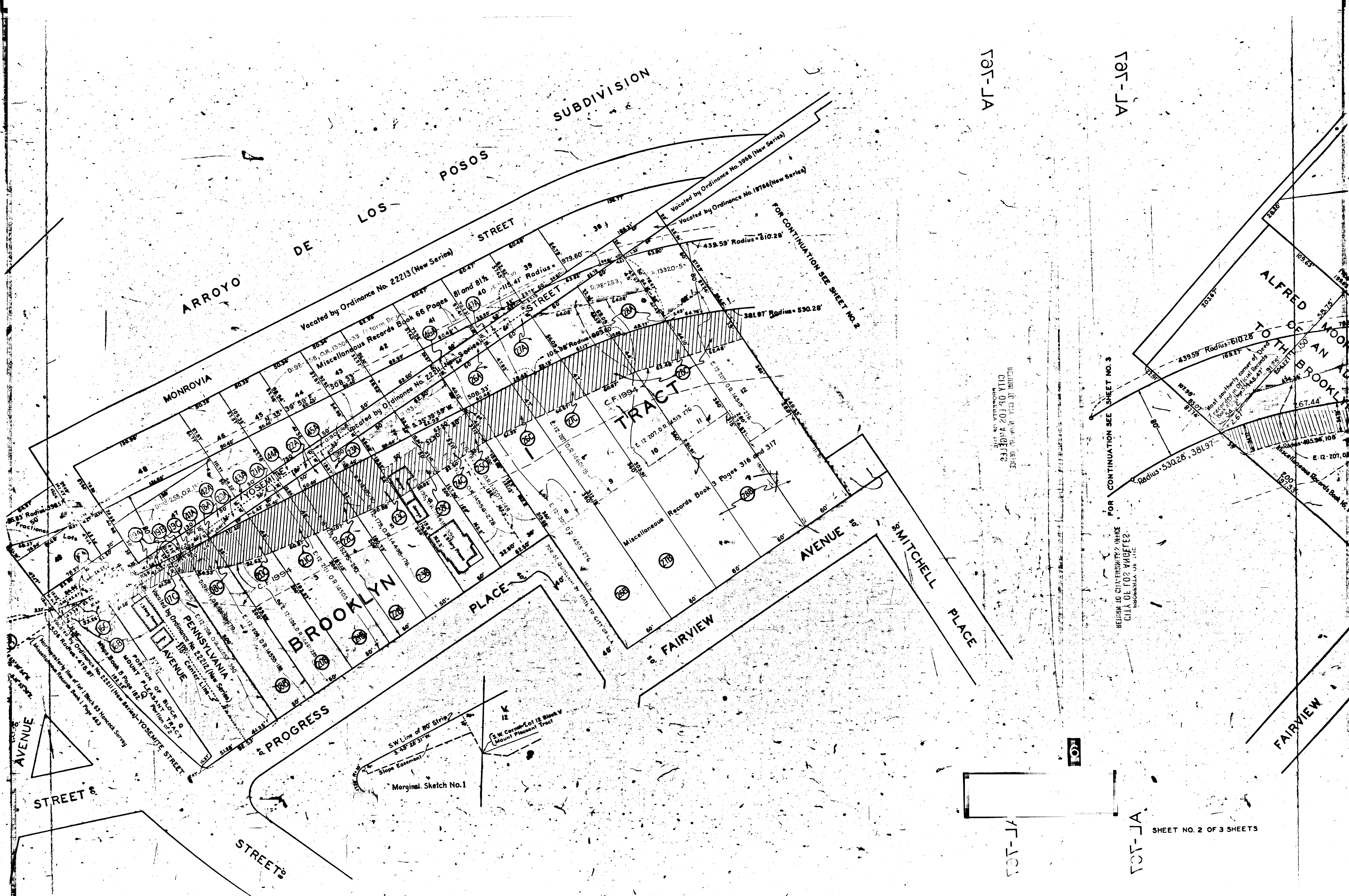
SMITCHELL

GILLETTE STREET

PLACE



SMITCHELL PLACE



T-1A

T-2A

T-3A

T-4A

SHEET NO. 2 OF 3 SHEETS

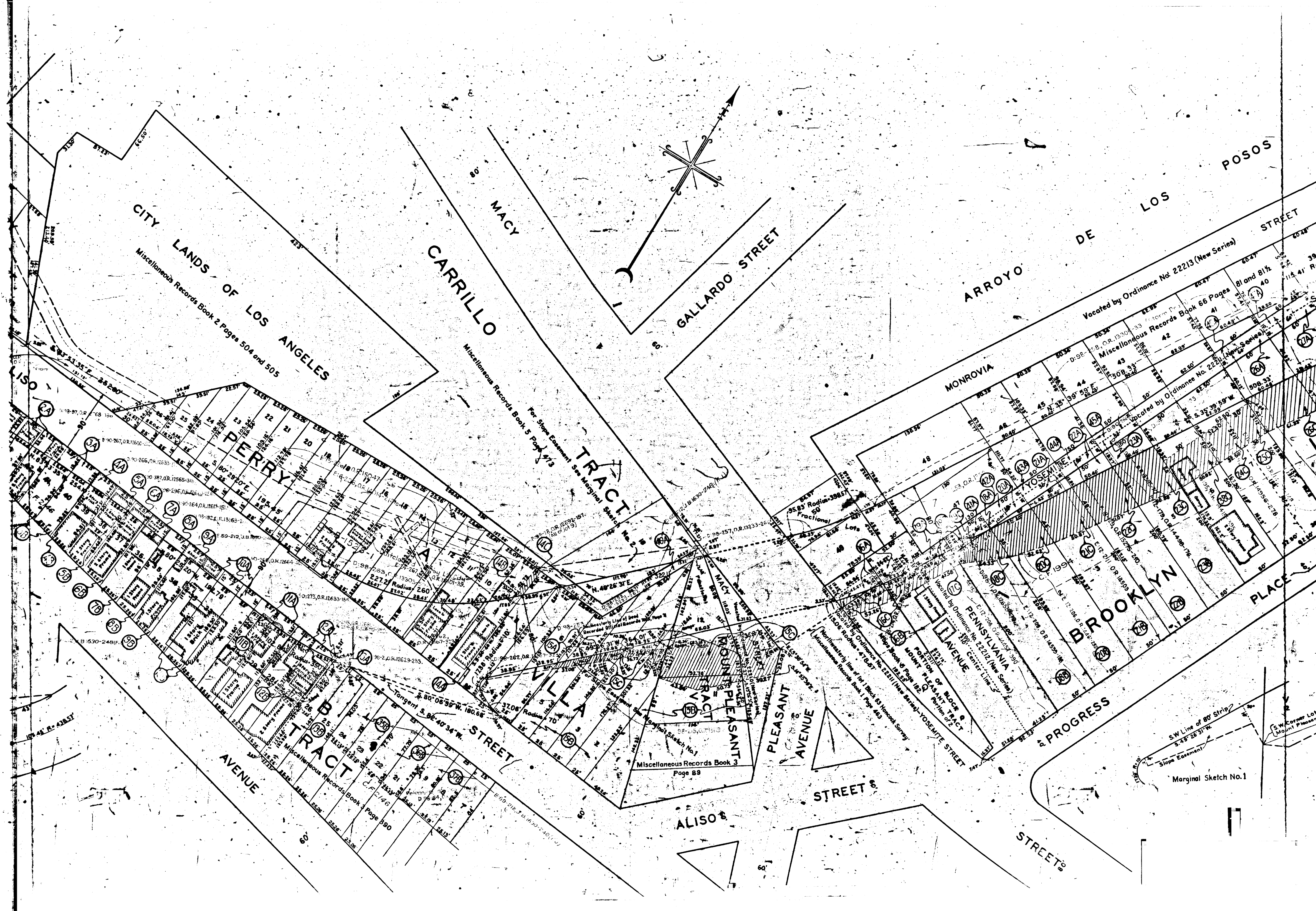
REVISION TO CITY ENGINEER'S OFFICE
CITY OF LOS ANGELES
PROBATION DEPT.

FOR CONTINUATION SEE SHEET NO. 3

REVISION TO CITY ENGINEER'S OFFICE
CITY OF LOS ANGELES
PROBATION DEPT.

ALFRED MOORE
TO THE BROOKLYN TRACT

FAIRVIEW



CITY LANDS OF LOS ANGELES
Miscellaneous Records Book 2 Pages 504 and 505

CARRILLO TRACT
Miscellaneous Records Book 5 Page 413
For Slope Easement See Marginal Sketch No. 2

PERRY TRACT

AVENUE TRACT
Miscellaneous Records Book 3 Page 390

STREET

VILLA TRACT
Miscellaneous Records Book 3 Page 89

PLEASANT TRACT
Miscellaneous Records Book 3 Page 89

PLEASANT AVENUE

STREET

PENNSYLVANIA TRACT
Vacated by Ordinance No. 22212 (New Series)

PROGRESS STREET

BROOKLYN TRACT
Vacated by Ordinance No. 22213 (New Series)

ARROYO DE LOS POSOS STREET

Marginal Sketch No. 1
SW Line of 80' Strip
S. 45° 28' 31" W.
Slope Easement

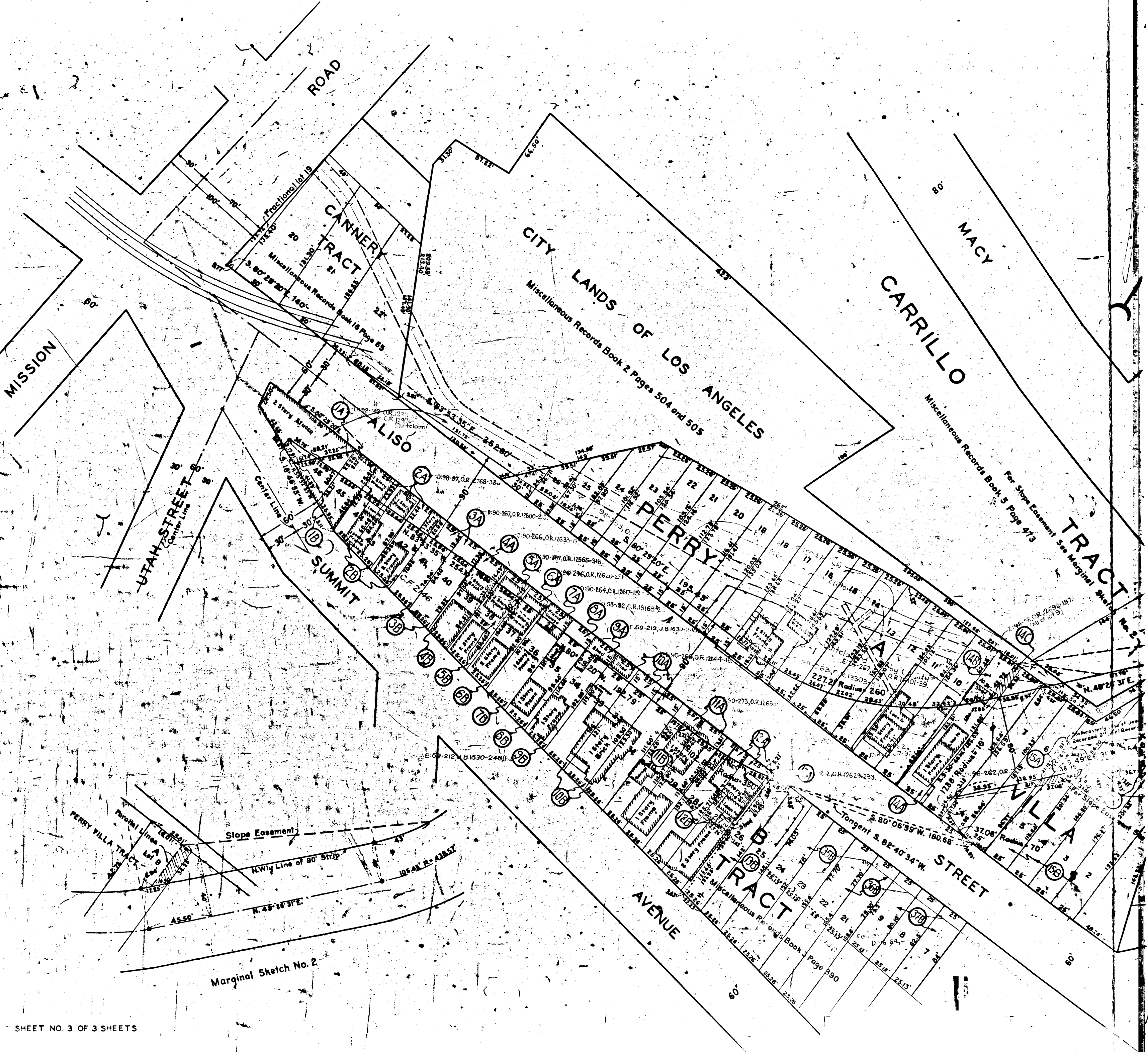
SW Corner Lot 12 Block V
(Mount Pleasant Tract)

7-101

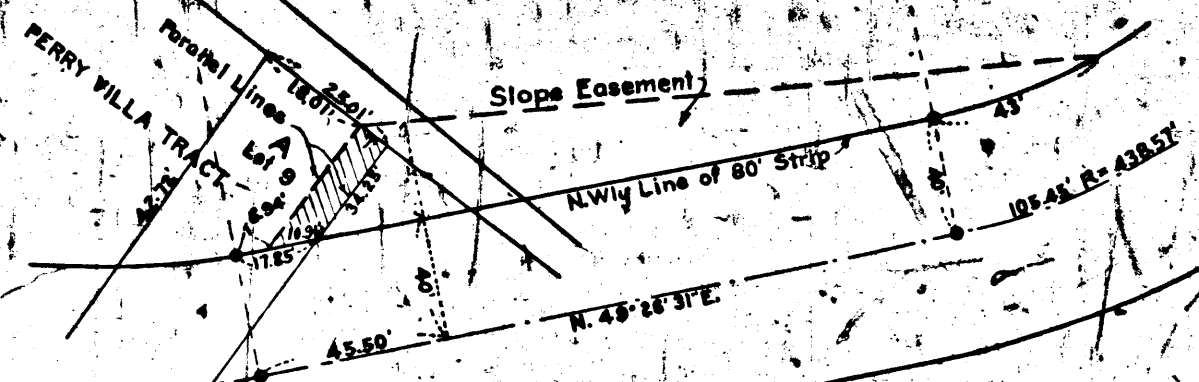
7-101

SHEET NO. 3 OF 3 SHEETS

RECORDS SECTION
OFFICE OF THE COUNTY CLERK
COUNTY OF LOS ANGELES



Marginal Sketch No. 2



For Slope Easement See Marginal Sketch No. 2