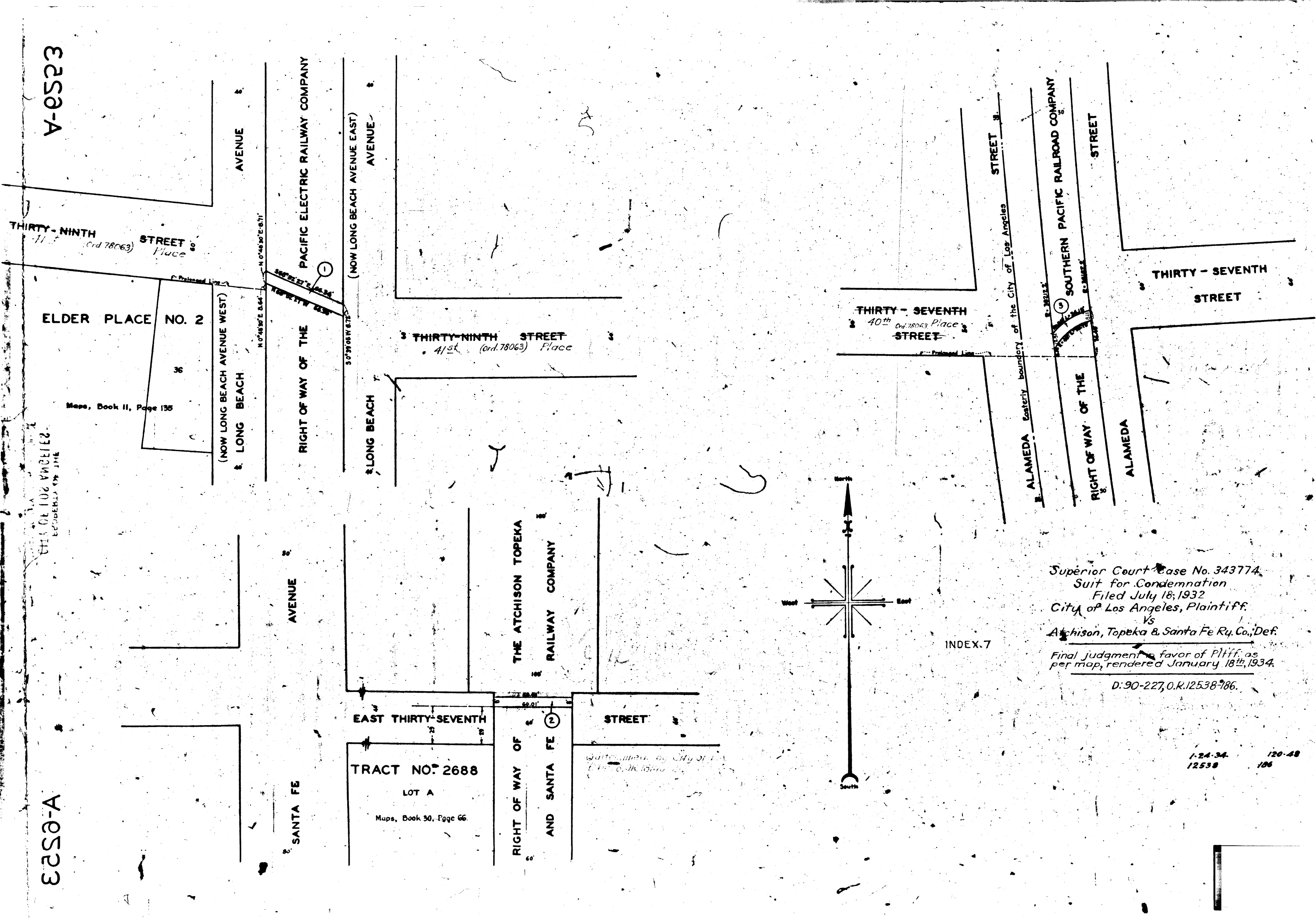


A-6253

A-6253

A-6253

A-6253



**MAP**  
 SHOWING EASEMENTS AND RIGHTS-OF-WAY TO BE CONDEMNED FOR  
 PUBLIC SANITARY SEWER PURPOSES  
 IN, OVER, ALONG, UPON AND ACROSS  
 THE RIGHT OF WAY OF THE  
 PACIFIC ELECTRIC RAILWAY COMPANY  
 LYING BETWEEN THE EASTERLY AND WESTERLY ROADWAYS OF  
 LONG BEACH AVENUE  
 (NOW LONG BEACH AVENUE EAST AND LONG BEACH AVENUE WEST)  
 AT  
 THIRTY-NINTH STREET  
 IN THE CITY OF LOS ANGELES, CALIF.  
 ALSO  
 IN, OVER, ALONG, UPON AND ACROSS  
 THE RIGHT OF WAY OF THE  
 SOUTHERN PACIFIC RAILROAD COMPANY  
 LYING BETWEEN THE EASTERLY AND WESTERLY ROADWAYS OF  
 ALAMEDA STREET  
 AT  
 THIRTY-SEVENTH STREET  
 IN THE CITY OF VERNON, CALIF.  
 ALSO  
 IN, OVER, ALONG, UPON AND ACROSS  
 THE RIGHT OF WAY OF THE  
 ATCHISON, TOPEKA AND SANTA FE RAILWAY COMPANY  
 LYING EASTERLY OF  
 SANTA FE AVENUE  
 AT  
 EAST THIRTY-SEVENTH STREET  
 IN THE CITY OF VERNON, CALIF.  
 IN ACCORDANCE WITH ORDINANCES NOS 70254 AND 71363  
 J.J. JESSUP CITY ENGINEER JUNE 1932  
 SCALE 1 INCH = 40 FEET

Superior Court Case No. 343774.  
 Suit for Condemnation  
 Filed July 18, 1932  
 City of Los Angeles, Plaintiff,  
 Vs  
 Atchison, Topeka & Santa Fe Ry. Co., Def.  
 Final judgment in favor of Plff. as  
 per map, rendered January 18<sup>th</sup>, 1934.  
 D: 90-227, O.R. 12538-786.

INDEX-7

Note: Easements and Rights-of-Way to be condemned shown colored red  
 Figures in circles indicate the parcel numbers as set forth in  
 Paragraph VIII of the complaint

A-6253